



NAVFAC Atlantic Contingency Engineering

**A Brief for The Society of American Military
Engineers**

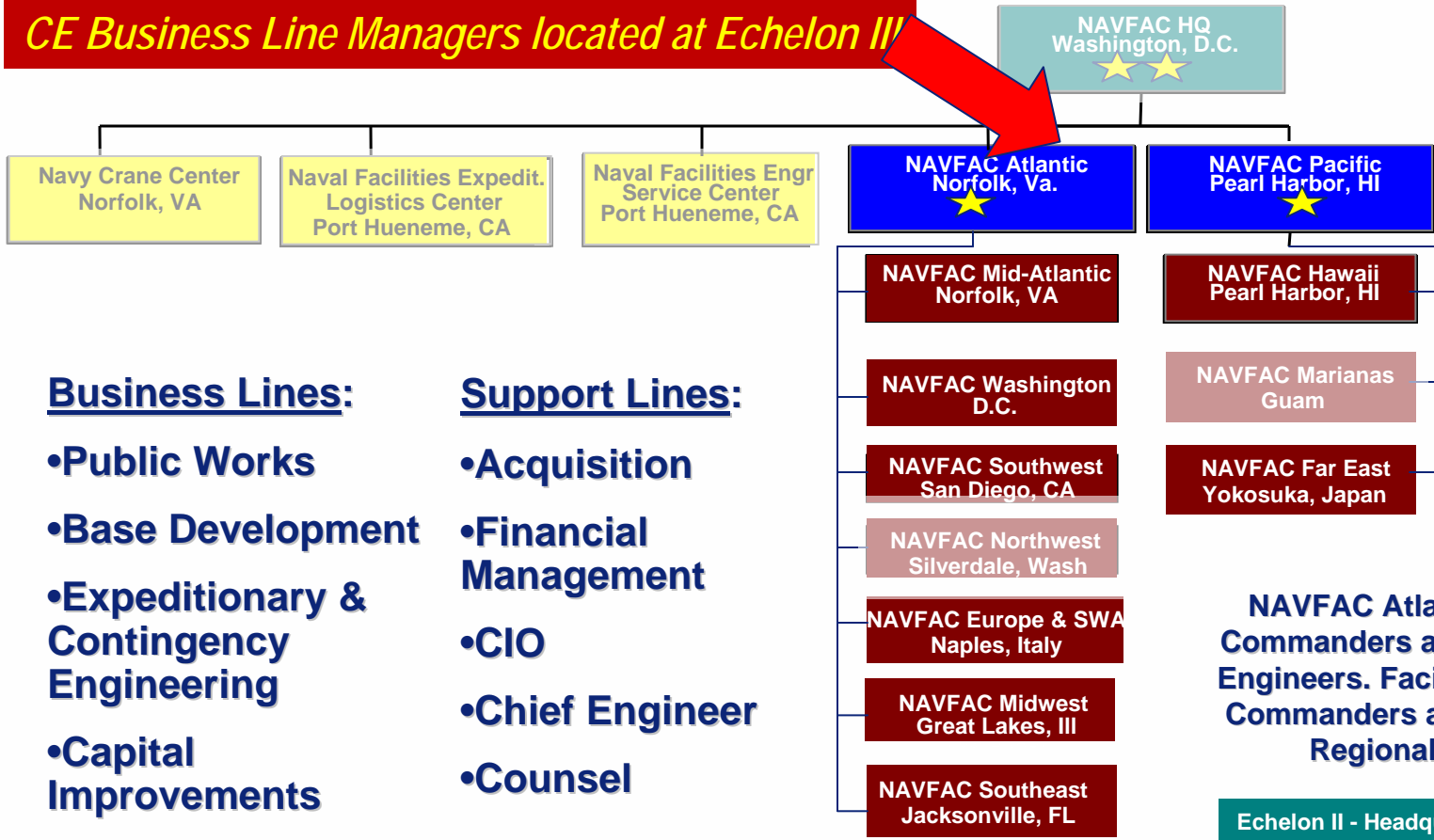
13 January 2010

What you need to know about CEBL



- Operational “wiring diagram” & AOR
- Echelon III Contingency Engineering Products & Services
 - Global Contingency Contracts
 - Engineering Reachback
 - CERT
- Echelon IV Contingency Engineering Products & Services
 - CERT

CE Business Line Managers located at Echelon III



Business Lines:

- Public Works
- Base Development
- Expeditionary & Contingency Engineering
- Capital Improvements
- Environmental
- Real Estate

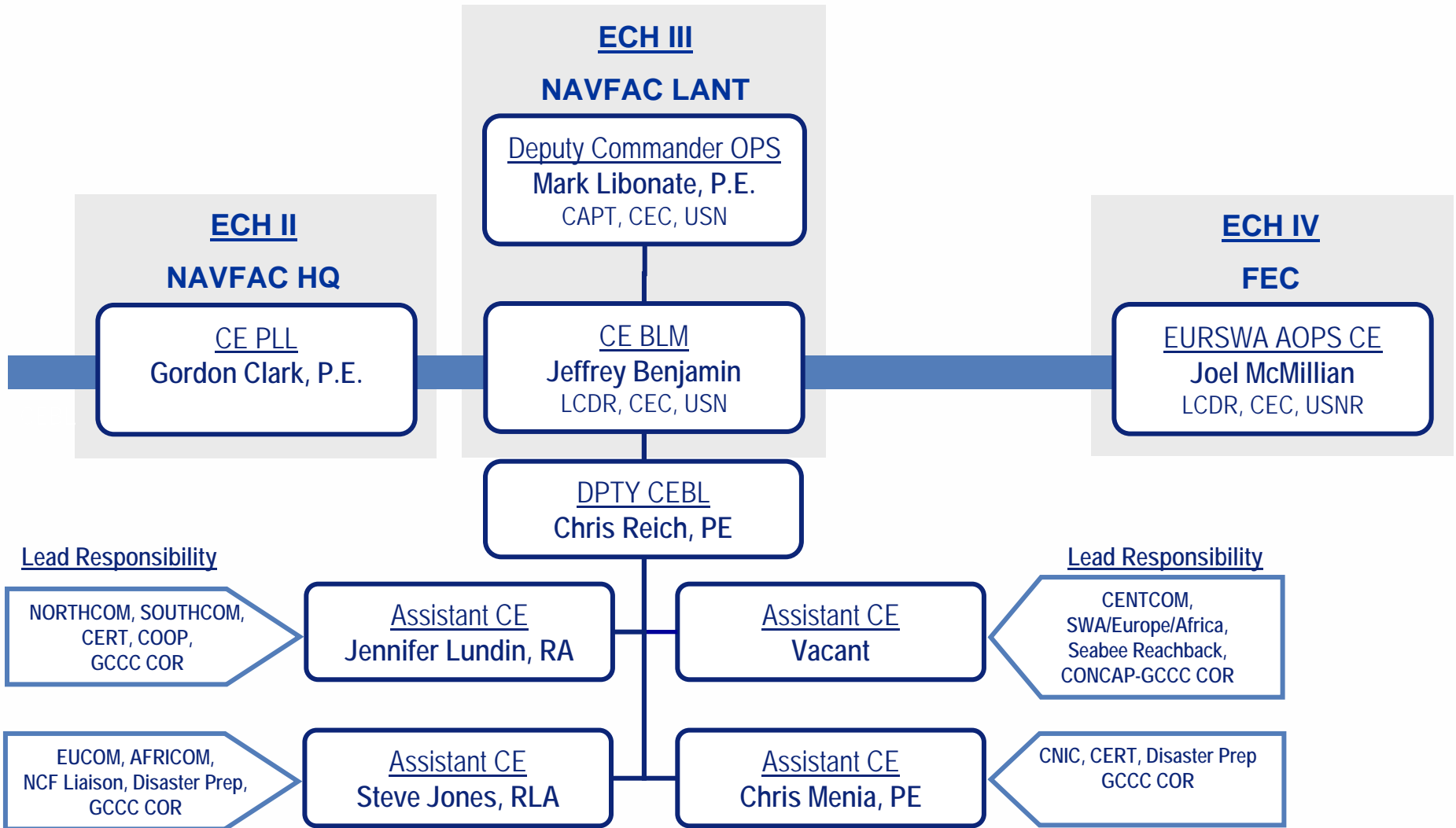
Support Lines:

- Acquisition
- Financial Management
- CIO
- Chief Engineer
- Counsel

NAVFAC Atlantic and Pacific Commanders also serve as Fleet Engineers. Facilities Engineering Commanders are dual-hatted as Regional Engineers.

- Echelon II - Headquarters**
- Echelon III**
- Echelon III (Specialty Centers)**
- Ech. IV (Facilities Engineering Commands)**

NAVFAC Atlantic CEBL Organization



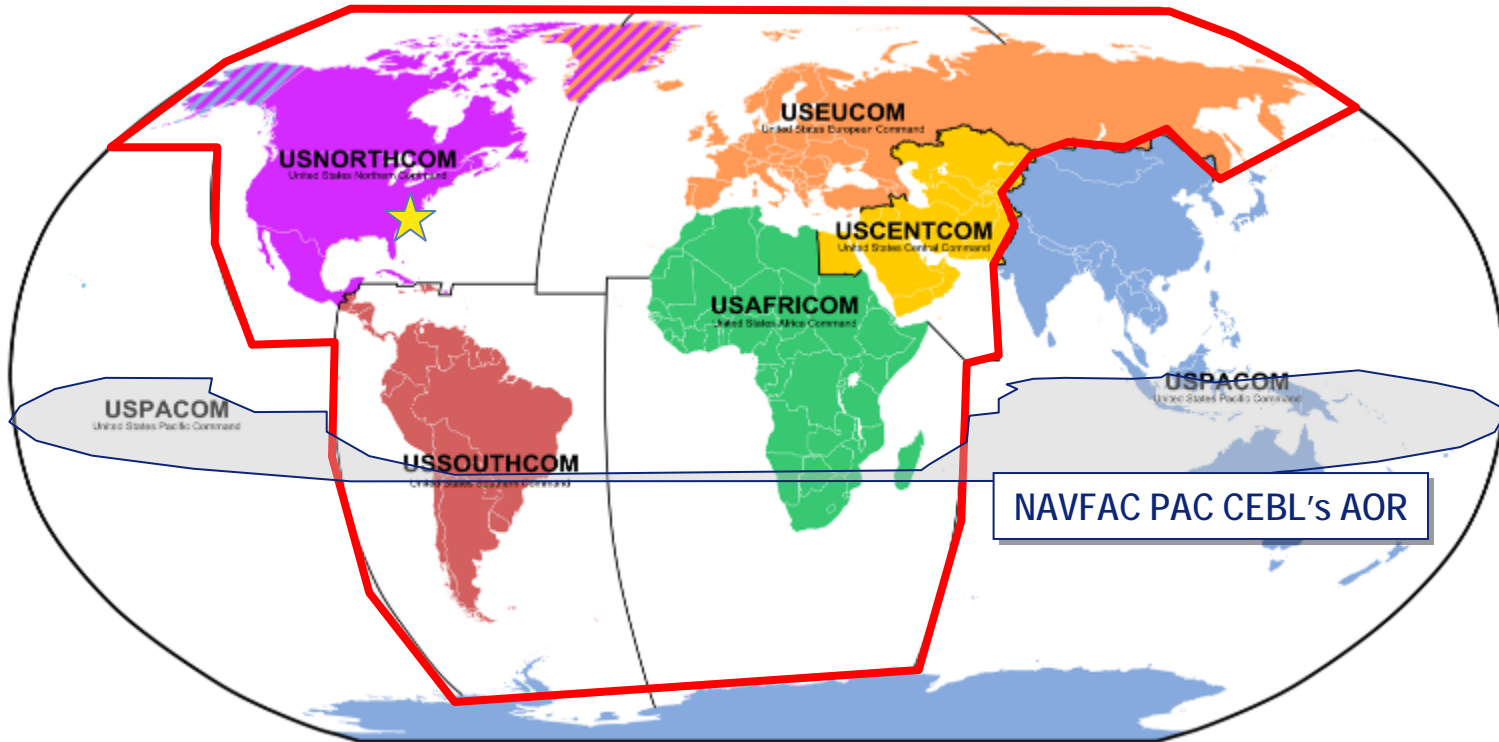
NAVFAC LANT CEBL's AOR



Major Clients



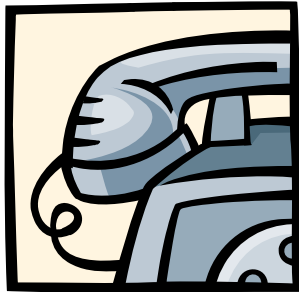
NAVFAC LANT AO and Supported Commanders



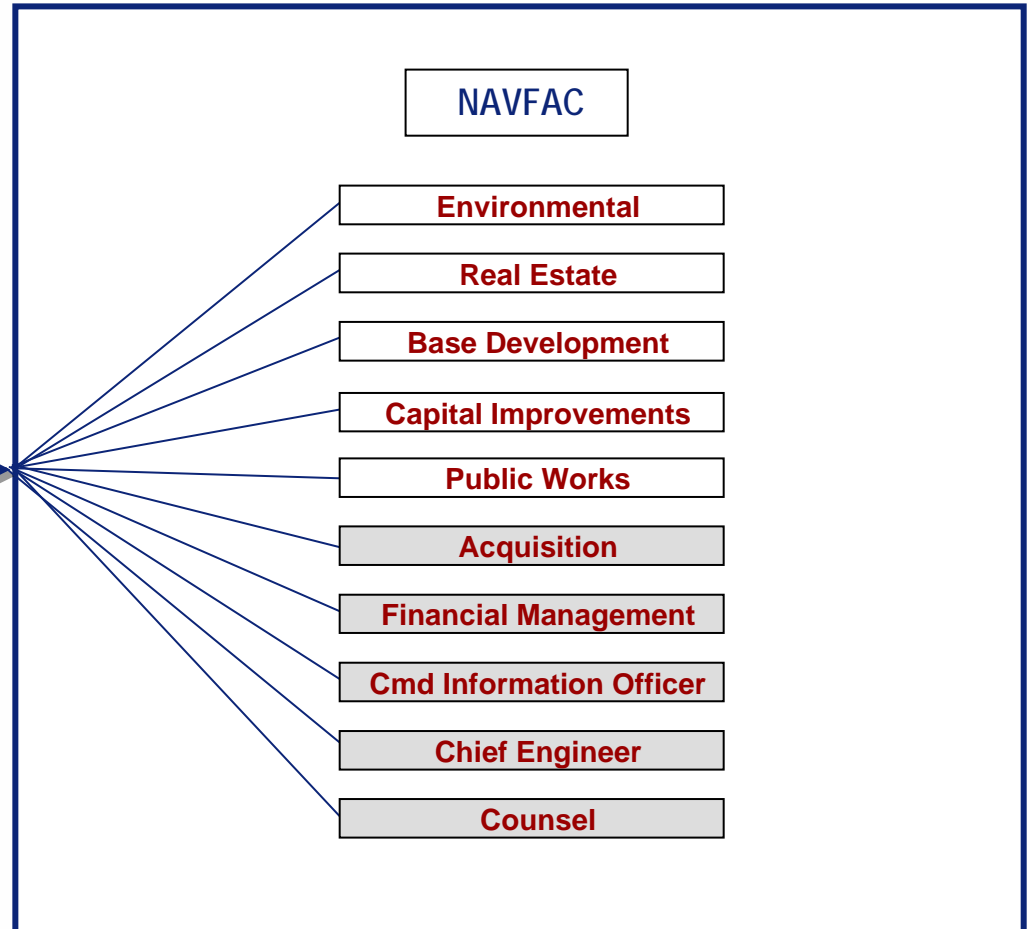
Products and Services Coordination



One Stop Shopping for ALL NAVFAC Products & Services, for all your Urgent needs!



Contingency Engineering



One call gets you access to all NAVFAC business and support lines.

CE Echelon III Products and Services



- Expeditionary OICCs
- Expeditionary Facility Design
- Remote Construction Projects
 - Exercise Related Construction
 - Humanitarian Assistance/Humanitarian Civic Assistance
 - Counter Drug
- Exercise Augment Staffing
- Deliberate/Crisis Action Planning Support
- Contingency Contracting
- Reachback Engineering
- Contingency Engineering Response Teams

Global Contingency Construction Contract



Cost Plus Award Fee, Multiple Award Construction Contract (MACC) – PCO NAVAC LANT – ACO Local FEC

- Total Capacity: NTE \$1.0B
- 3 Contractors (ACC, Flour, URS-IAP)
- Award Date: AUG 2006

Criteria for use:

- Emergency/Contingency situation
- Element of significant uncertainty to the scope, schedule or time supporting use of cost-plus contract
- Work is predominately facilities/engineering related

Purpose: Provide worldwide rapid civilian construction and engineering services response for: Disaster recovery, Military Conflict, Military Operations Other Than War, Humanitarian Assistance.

Capabilities

Horizontal/Vertical Construction

- | | |
|------------------------------------|-------------------------------|
| Runways | Roads |
| Bridges/Causeways | Piers |
| Demo/Cleanup | Housing Repairs |
| Depot/Warehouses | Clinics & Field Hospitals |
| Operation / Maintenance Facilities | Communication Facilities |
| Berthing / messing facilities | Ammunition storage facilities |

Specialty Construction

Engineering

- Dredging
- POL Facilities
- Aerial Photography
- Soils Engineering
- Environmental Restoration
- CBRN / WMD Recovery (non-first responder)
- Operation of power generation, concrete and asphalt plants
- Project Planning
- Staffing for varying sizes of operations
- Material Management Capabilities
- Material Liaison Support for NCF

Global Contingency Services Contract



Indefinite Delivery / Indefinite Quantity Cost Plus Award Fee contract - PCO NAVFAC PAC – ACO Local FEC

- Total Capacity: NTE \$450 million over 5 years.
- Award: 30 August 2006
- Contingency Response Services, LLC – A joint venture between DynCorp Internal (LLC), Parson Global Services, Inc. and PWC Logistics

Purpose: To quickly provide short term Facilities support services with incidental construction at various locations (including remote locations) throughout the world in response to: Natural disasters, humanitarian efforts, or contingencies, other requirements (i.e. due to non-performance by an incumbent contractor or instances where there is an unanticipated lapse in service)

Capabilities

Installation Management Accounting
Core Business Model Functions

Air Operations
Port Operations
Range Operations
Moral, Welfare & Recreation Support
Base Support Vehicles & Equipment
Housing
Environmental
Public Safety
Ordnance
Galley
Utilities Operations Support
Facility Support
Health Care Support
Personnel Support

Examples of CE P&S

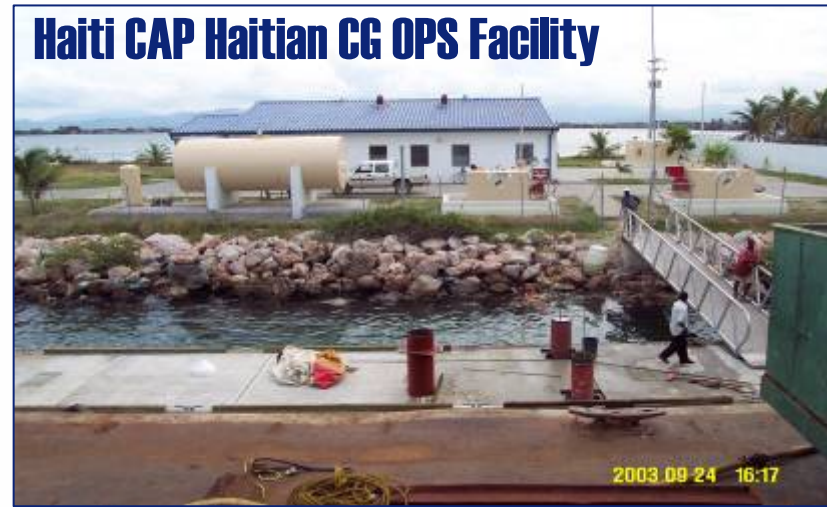


**St. Vincent
HAP Warehouse**

ERC/HA/HCA/CD construction,
designed by LANT, local
contract awarded by LANT, QA
by LANT or local FEC.



**DOMREP
Las Calderas Pier**



Haiti CAP Haitian CG OPS Facility



CE Hurricane Response



CONCAP

- Hurricane Katrina
 - Louisiana Bases Recovery \$84.5M
 - Mississippi Bases Recovery \$96.8M
 - USACE Morgue Facility \$20.7M
 - USACE Dewatering Plaquemines \$23.8M
- Hurricane Rita
 - Texas Reserve Center Repairs \$498K
 - USACE Dewatering Terrebone \$4.6M
- Hurricane Wilma
 - NAS Key West Recovery \$98.2M

Contingency Engineering Response Teams

- CERT (4 Teams/45 total personnel)
- Contract QA Teams (5 Teams/60 personnel)

DMORT TFS#1 Carville, LA



Breach Repair Plaquemines Parish, LA



Contingency Engineering Response Teams



- Support Facilities Contingency Response Needs of CNIC, CFFC, COCOMs and other Navy/Marine Corps Clients
- Standing Capacity for Contingency Response
 - Damage Assessment
 - Contract Administration
 - Other Technical Requirements (Planning, Environmental, Utilities)
- Consistent Corporate-wide Approach
- Flexible and Scalable “Building Block” Teams
 - Interoperability across FECs
- Prepared for rapid deployment
 - Pre-identified, assigned Personnel
 - *Equipped*
 - *Trained*
 - *Exercised*
 - *Committed*

*An Echelon IV
Resource!*

CERT Mission Profiles



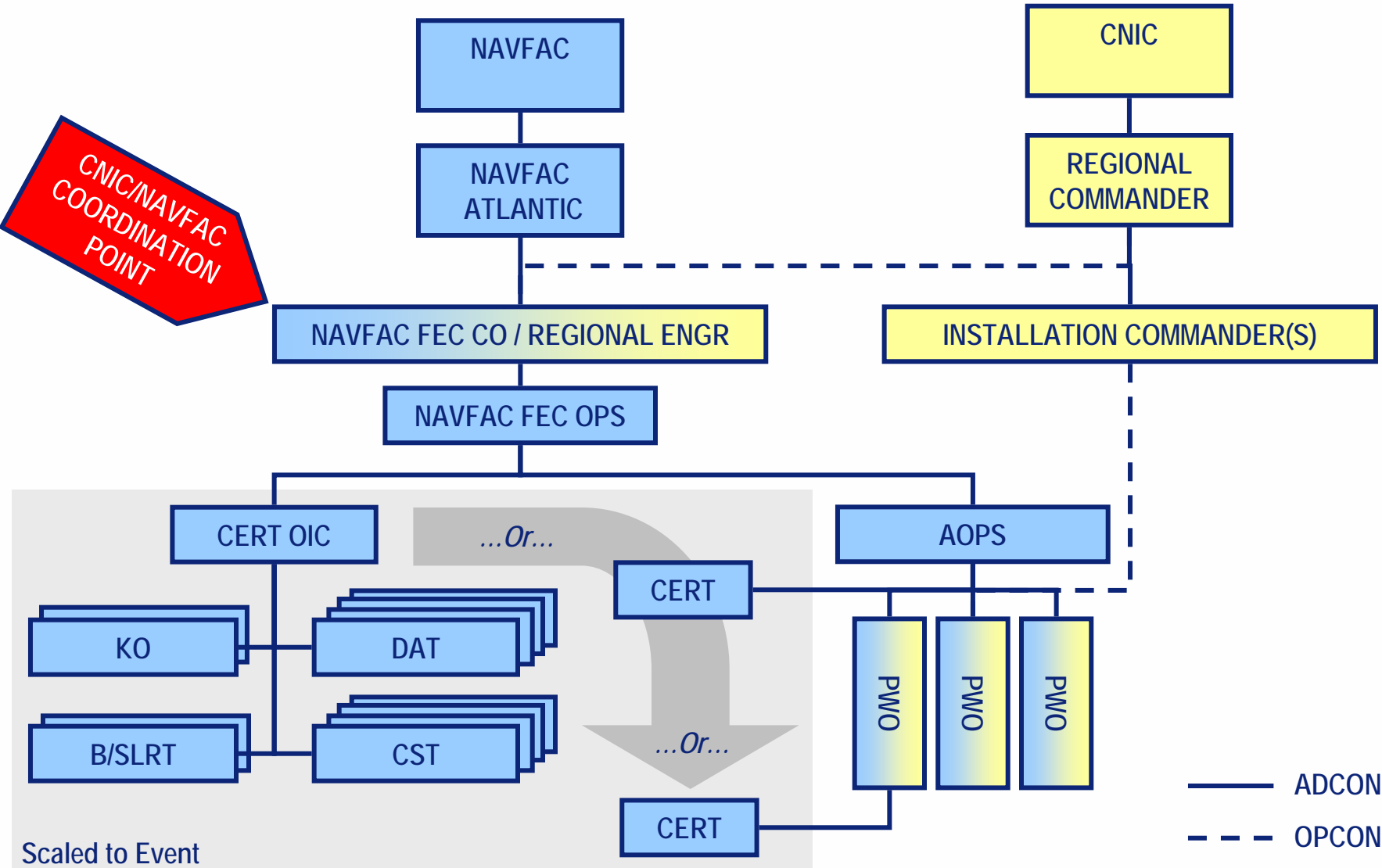
- Full Range of natural and man-made disasters
 - *Not just Hurricanes!*
 - Military Operations Other Than War (MOOTW)
 - Defense Support of Civil Authorities (DSCA)
 - Humanitarian Assistance
 - Domestic or Overseas
 - Permissive or non-Permissive Environment*

Examples

Hurricanes	Explosions
Earthquakes	Air or Rail Accident
Volcanic Eruptions	Environmental Spill
Floods	GWOT Support
Fire	

* Special volunteer teams will be designated for non-permissive environments.

CERT C²



Scaled to Event

CE/BL/FEC Responsibilities



- **CEBL**

- Oversight and coordination of program
- Develop and maintain personnel, training and equipment requirements
- Develop and maintain CERT Procedures (BMS)

- **B/SL's**

- Identify B/SLRT requirements
- Assign, train, equip and maintain B/SLRTs
- Maintain ability to recall/activate teams on short notice (48 hours)

- **FEC**

- Designate Contingency Engineer/Disaster Preparedness Coordinator
 - Echelon IV Operations Core Function
 - Collateral Duty
- Assign, train, equip and maintain CERTs
- Maintain ability to recall/activate teams on short notice (48 hours)

LANT CERT Pax Assignments



COMMAND	DATs	CSTs	Team Leaders	Contracting Officers	Total Personnel
MIDLANT	2	2	2	2	18
SOUTHEAST	2	2	2	2	18
WASHINGTON	1	1	1	1	9
SOUTHWEST	2	2	2	2	18
MIDWEST	1	1	1	1	9
NORTHWEST	1	1	1	1	9
EUROPE	1	1	1	1	9
ATLANTIC HQ	2	0	2	2	12
TOTAL	12	10	12	12	102

Minimum number of teams required. FECs may form additional/alternate teams if desired.

CERT Functional Assignments



- **Team Leader**

- Augment PWD staff to coordinate all CERT functions so as not to overwhelm the department while it is recovering staff and restarting previously ongoing workload

- **Damage Assessment Team**

- Structural safety assessment
 - Rapid Damage Assessment providing data for Budget development

- **Construction Support Team**

- GCC Contract management
 - Letter Contract Management
 - Begin deliberate repairs

- **Contingency Contracting Officer**

- ACO for GCC CTO
 - On-site use of other acquisition tools as needed to support recovery
 - Support PWD

- **BL/SL Support Team**

- Technical assistance on specific issues (mold, environmental, real estate leasing, planning, etc)

CERT Elements and Composition



- **Damage Assessment Team (DAT) – 4 Personnel**
 - Architect
 - Structural Engineer
 - Civil Engineer
 - 1 Mechanical or Electrical Engineer
- **Construction Support Team (CST) – 3 Personnel**
 - Construction Manager or AROICC
 - 2 Engineering Technicians with CM experience
- **Team Leaders**
 - O4/5 CEC or GS13/14 capable of leading multiple teams
- **Contingency Contracting Officers**
 - Warranted CEC Officer or 1102
- **Business/Support Line Response Team (B/SLRT)**
 - Business/Support Line Specific (EV, RE, BD, PW...)

Assigned and
maintained by
FEC

Assigned and
maintained by
BLM

CERT Response Procedures and Principles



Procedure

1. Local FEC responds with organic resources and teams.
2. If beyond local organic capability, FEC requests support from NAVFAC Echelon III CE Business Line Manager (BLM).
3. CE BLM coordinates/tasks CERTs from other commands.
4. CERTs CHOP to Local FEC (or CE BLM if FEC desires relief).
5. CE BLM identifies relief teams (establishes and manages rotation plan).

Principles

- Local FEC “owns” the response (unless overwhelmed).
- CE BLM provides/coordinates corporate support.
- CERT can deploy as teams or individuals.
 - Scalable and tailor-able

B/SLRT Assignments



Business/Support Line Managers will maintain teams and/or personnel capable of deploying or providing reachback for the following functions:

Capital Improvements

DAT Reachback and Budget Submission
Cost Engineering
Scope Preparation
Technical Support

Environmental

Environmental Assessment
Spill Response
IR Site Evaluation
Mold, Asbestos, and Lead Mitigation Expertise

Base Development

Damage Assessment Assistance
IPL Generation
Master and Recovery Planning

Real Estate

Real Estate Actions

Public Works

Utility Restoration

Financial Management

Contingency Funding Review

Acquisition

GCC & GCS ACO
Other Contract Tools and Support

Command Information Office

Field/Mobile Office Communications and Setup

- **FECs have varying capabilities and standing equipment cache**
 - Effort mainly focused on safety and field gear
- **BMS published CERT Deployment Guide provided equipment recommendations based on best practices**
 - Has been refined over the last several months
- **IT and Communications suffer from lack of funding and consistency**
 - IT consists of NMCI laptops that can be gathered (from CERT personnel or central laptop inventory) – not dedicated resource
 - Communication varies from cell phone to satellite phone with little to no organic NAVFAC IT connectivity over either
 - Current situation is to rely on CNIC deployable communication assets on a as needed basis - Satellite (BGAN terminal) with IT connectivity at various scales

CERT – FY10 Way Ahead



- **Finalize Training Program and start deployment**
 - Required and Recommended safety and technical training based on position on team
 - Support rapid deployment of training to increase readiness of CERT
 - Evaluating need for medical screening
- **Procure and deploy standardized CERT Equipment cache**
 - Ensure all FECs have baseline of same equipment to support mission
 - Support interoperability amongst CERTs
 - Verify sustainability of annual O&M costs for cache
 - May lead to IT/COMM deployment delay or postponement
- **Support training and readiness management at the FEC level using ESAMS**

LANT Contingency Engineering



LCDR JEFF BENJAMIN, CEC, USN Contingency Engineer Atlantic

757-322-8302

DSN 312-262-8302

Cell 757-339-6111

[jeffery.benjamin@navy.\(smil\).mil](mailto:jeffery.benjamin@navy.(smil).mil)

Steve Jones, RLA

Assistant Contingency Engineer

757-322-8318

[steve.g.jones@navy.\(smil\).mil](mailto:steve.g.jones@navy.(smil).mil)