

Programs Presentations Roundtable

Fred Scarpello, Air Force Civil Engineering Center (AFCEC)

Kurt Kesteloot, National Parks Service (NPS)

Tim Rush, Nebraska Army National Guard

Michael Coates, USACE Kansas City District

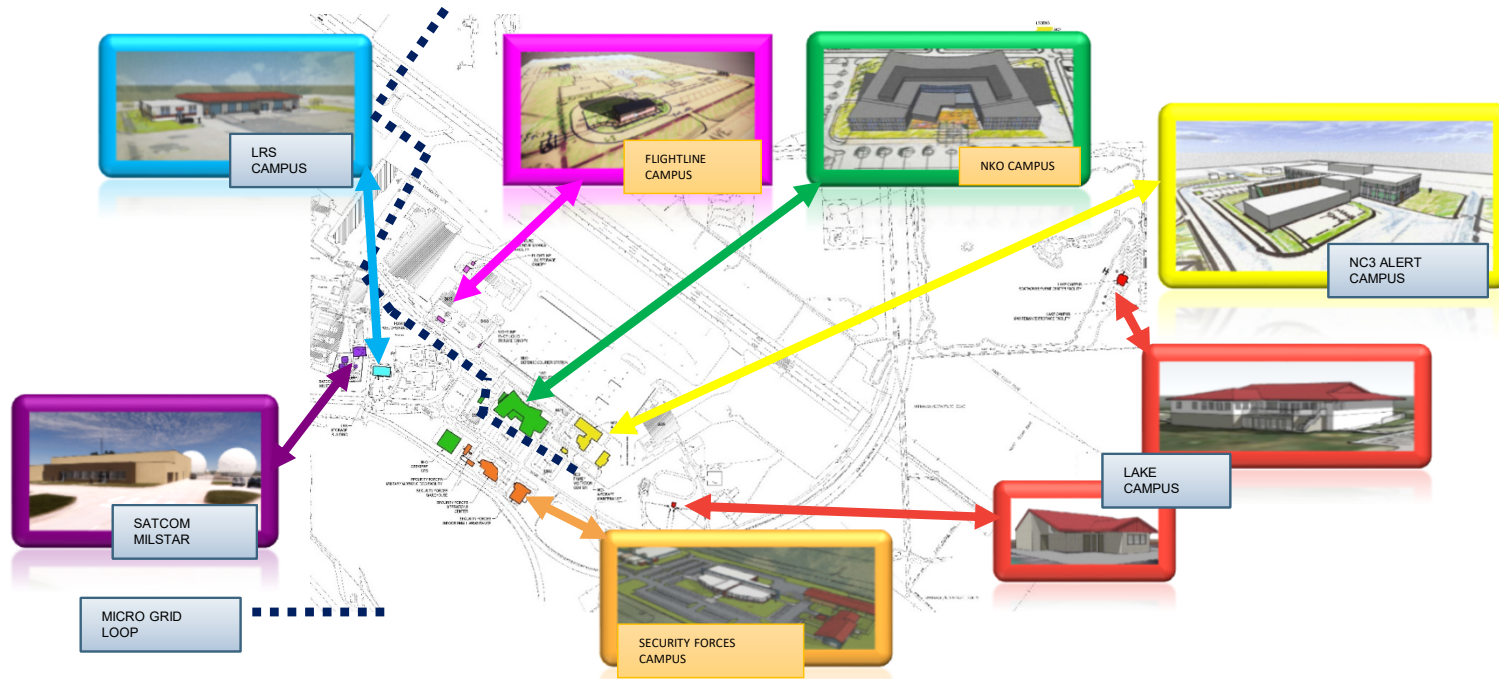


OFFUTT AFB PROGRAMS Project Update

PRESENTER:
Fred Scarpello, P.E.
Offutt Flood Recovery Project Manager



CAMPUS WIDE PLAN



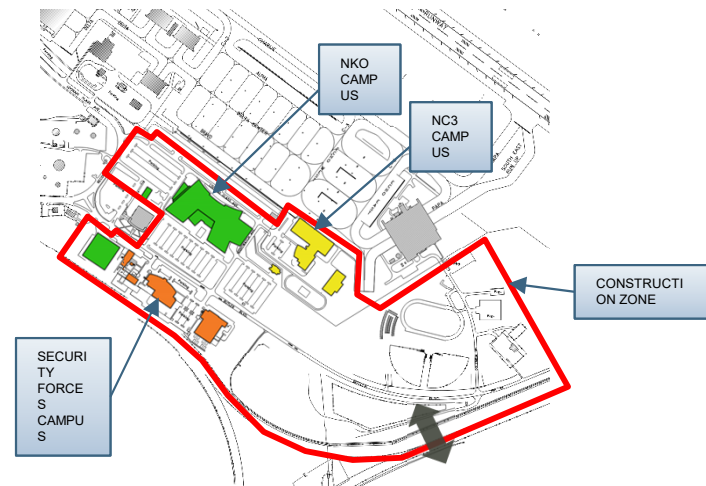


DEMOLITION and SITE PREPARATION STATUS: In Construction



Description of the Project: The project will include building demolition and infrastructure construction for southeast area of Offutt, AFB affected by the flood of 2019, and primarily provides infrastructure and rough grade establishment for the three (3) campuses illustrated. Security zone establishment will be an integral part of the project. The solicitation will include the following:

- Building demolition: 318,000 SF +/- (19 of 30 Bldgs demoed)
- Utility and paving demolition
- Significant Earthwork: 23,000 of 970,000 +/- CY fill placed
- Water, sanitary and storm sewer trunk line replacement
- Sanitary sewer lift station replacement
- HP natural gas line replacement
- Storm Water Mitigation
- Construction Zone fencing
- Construction Zone access Entry Control Point (ECP)





DEMOLITION and SITE PREPARATION STATUS: In Construction





LAKE CAMPUS

STATUS: In Construction

Design Build – Small Business Set Aside

Description of Campus: The Lake Campus will provide critical recreation needs to military families and retirees. It includes a Consolidated Recreation & Event Center, an Equipment Storage Facility and a Softball Complex. The project will be two (2) solicitations as follows:

- **Consolidated Recreation Facility**
- Consolidated Recreation and Event Center (10,200 SF+/-), one-story event center and campground management facility
 - Equipment Maintenance Facility (2,900 SF+/-) one-story storage facility
 - Site work includes: RV camping pad replacement and service hook ups, Miscellaneous Recreation Facilities (Playgrounds, Volley ball), Paving, Utility Replacement, & Lake Bank Stabilization
- **Softball Complex**
- Softball Complex facility (2,500 SF+/-), one story with restrooms & equipment storage
 - Site work includes: Repair of two softball fields, fencing, paving, utility connections and lighting



Consolidated Recreation Facility



Equipment Maintenance Facility



Softball Complex Facility



LOGISTIC READINESS SQUADRON CAMPUS

STATUS: In Construction

Design Bid Build – One Step Acquisition

•**Description of Project:** The project provides critical logistics support for the 55th Wing, STRATCOM & the 595th C2G. The project will be a DBB solicitation and include the following:

- One-story (27,300 SF+/-) general purpose storage facility with loading docks, administrative and customer service areas
- Site work includes: paving and hardstand areas with 64,000 SF+/- of open storage, loading areas, a truck scale, utility connections, parking and lighting.





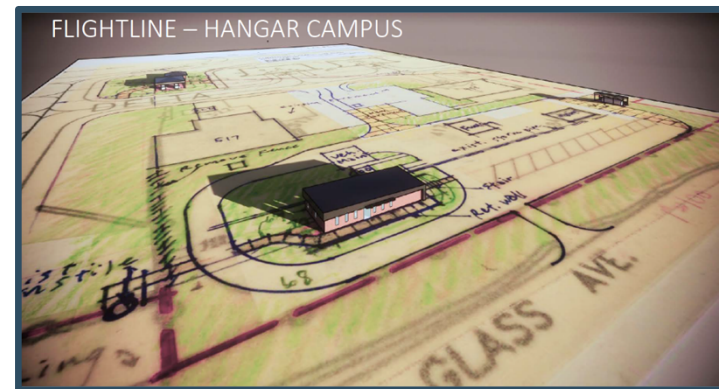
FLIGHTLINE HANGAR CAMPUS

STATUS: In Design

Small Business

Description of Campus: The project provides support for the POL and Wing missions. The campus will be a Design-Build, BVTO solicitation and will include the following facilities:

- **Petroleum Operations Facility** (4,800 SF+/-): The one-story facility will include customer services areas, administrative space, and a petroleum laboratory.
- **De-Icing Storage Facility** (1,050 SF+/-): The one-story shed will provide weather cover for de-icing tanks with drive up capabilities
- **LOX Storage Facility** (4,800 SF+/-): The one-story shed will provide weather cover for liquid oxygen tanks with drive up capabilities for delivery.
- **LOX Maintenance Facility** (1,850 SF+/-) : The one-story facility will provide areas for maintaining enclosed space for maintenance and storage of LOX equipment, a restroom, and an office.
- **Site work:** includes earthwork, phased demolition, paving, lighting, and perimeter security fencing.





SECURITY CAMPUS

STATUS: Awaiting Authority to Award

Full and Open – Two Phase Acquisition

Description of Campus: The project will consolidate security, law enforcement, police services, investigation, training, information and personnel security, resource protection, and confinement operations into four facilities. The campus will be a Design-Build BVTO Solicitation and include the following:

- **Military Working Dog (MWD) Facility** (14,400 SF+/-) The one-story facility includes dog kennels, office space, and veterinarian facilities for the Military Police.
- **Storage Facility** (14,500 SF+/-) The one-story facility includes general purpose storage and canopy for the MWD training area.
- **Security Operations Facility** (45,400 SF+/-) the one-story facility is the command center for the Security Forces and includes operations centers, training, administrative, and PI storage areas.
- **Small Arms Range** (40,400 SF+/-):the one-story facility includes a 50-meter indoor firing range with 28 firing positions. It will also include poured in place concrete walls and roof with baffles and back stop; ventilation and filters are also required.
- **Site Work:** includes parking, loading areas, MWD training area, a machine gun firing range,





NC3 Alert Campus

STATUS: Part 1 Source Selection Complete/Part 2 Advertisement

Design Build - Two Phase Acquisition

Security Requirements for Design & Construction: ICD 705-1, ICS 705-1 and IC Tech Spec for ICD/ICS 705

Description of Campus: The NC3 Alert Campus provides a consolidated facilities that will house the HQ offices of the National Airborne Operations Center (NAOC) and 1st Airborne Command and Control Squadron (1ACCS) and the NAOC Alert Force living quarters. The project supports the STRATCOM mission of providing strategic nuclear deterrence. The campus will be a Design-Build BVTO Solicitation and include the following:

- **Alert Facility** (143,000 SF+/-): The multi-story facility includes a watch floor, controlled space, sleeping quarters, a kitchen/dining area, a fitness center, administrative & storage areas, a loading dock, an auditorium, and a Simulator High-Bay with Overhead Crane
- **Aircraft Maintenance / Parts Storage Warehouse** (22,900 SF+/-): the low-rise facility includes open space for aircraft spares boxes, administrative areas, equipment rework shop with repair bay, and drive-through bays.
- **Family Visitation Center/Comm Node:** (5,100 SF+/-): The one-story family visitation center includes family rooms, a multi-use kitchen, open gathering space, and an in-processing center. The attached Communication Node will house secure voice/data for the entire lower campuses.
- **Site work:** includes paving, earthwork, utility connections, security fencing, loading areas, outdoor layout/storage area, playgrounds, and recreational amenities.



NC3 Alert Facility



Aircraft Maintenance /Parts Storage Warehouse

Family Visitation Center



NKO CAMPUS

STATUS: Ready to Advertise



Description of Campus: The NKO campus will provide consolidated facilities for the 55 OS. The mission provides worldwide reconnaissance, real-time intelligence, command and control, information warfare and combat support to U.S. leaders and commanders. The project will be three (3) solicitations as follows:

- **NKO Main & Defense Courier Station Design Build – Two Step Acquisition**
 - NKO Facility (418,00 SF +/-); The three-story facility includes controlled space, administrative areas, classrooms, and storage areas.
 - Courier Station (4,800 SF +/-); The one-story facility includes the following: dispatch, reception and processing of classified mail and parcels, administrative areas, garage parking, and secured space.
 - Site work includes: earthwork, paving, loading areas, outdoor plazas, security fencing, utility connections and landscaping.
 - **Security Requirements for Design & Construction: ICD 705-1, ICS 705-1 and IC Tech Spec for ICD/ICS 705**
 - **Schedule Advertise Date Step 1 Jun 2022**
- **OSS/SERE Warehouse Design Build – One Step Acquisition**
- OSS/SERE Warehouse (48,000 SF +/-); the one-story high-bay facility includes training areas, equipment storage, administrative areas, drive in bays, and a loading dock.
 - Site work includes: earthwork, paving, utility connections, loading areas, and landscaping.
 - **Schedule Advertise Date: Jul 2022**
- **Flight line Parking Area - Design Bid Build - Small Business**
- Project includes: earthwork, paving, and lighting.
- **Schedule Advertise Date: TBD**



NKO Facility



Defense Courier Station



OSS/SERE Warehouse



SATCOM MILSTAR CAMPUS

STATUS: 95% Design

Design Bid Build – Single Step Acquisition

Description of Project: The project will provide space for a survivable Satellite Communications Ground Terminal facility to support the Milstar program and achieve the objective of a global, secure, nuclear-survivable space-based communication system.

The 22,000 SF +/- One-story facility will include:

- High Altitude Electromagnetic Pulse (HEMP) shielding (20,700 SF +/-)
- Controlled Space with back up power
- Administrative areas
- Self-contained air conditioning systems
- Site work includes: utility connections, paving, retaining walls, security fencing, and structures for placing of satellite antennas.
- **Schedule Advertise Date: Sep 2022**



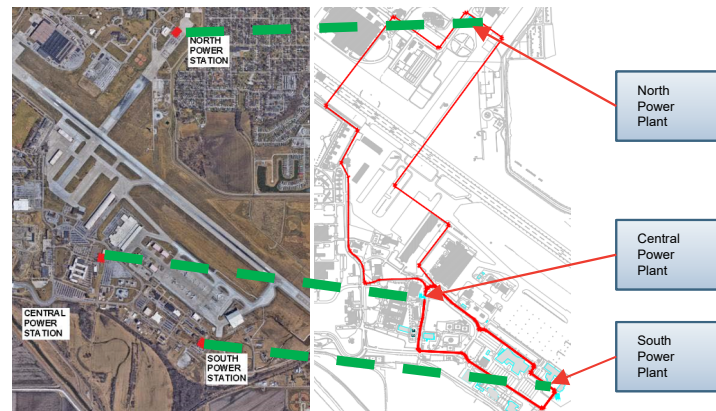


EMERGENCY POWER MICROGRID STATUS: Shifting to Privatization Contract

Project Being Reprogrammed into ERCIP Program

Description of Project: The project will be constructed in 2-Phases (lower loop and upper loop and will provide back up power for critical facilities in case of commercial outage & isolation capabilities from the commercial grid to mitigate potential terrorist attacks and known power outages. The project includes the following:

- 17.5 Mega-Watt,, EPA Tier 4, 13.8 KV continuous rated, Diesel Engine Generators (7 @ 2500KW each)
- Associated distribution assets (distribution bus, switchgear, etc.)
- Site work includes: distribution lines, diesel fuel line, demolition, and service vehicle parking



Site Plan – Emergency Power Microgrid



Weather Wing Stand By Power STATUS: Start Design

FY 23 UMMC Design Build Project

Description of Project: The project will constructed redundant primary distribution feed, switch gear, and transformers to the 557th Weather Wing located in Building 185. The redundant primary feed shall include the installation of anew 13.8kV distribution line, which is physically separated from existing feeds serving Bldg 185. A single story 291 SM electrical building that will house redundant switchgear, transformers and UPS

