

CDR Kurt Kesteloot

National
Park Service
Office of
Public
Health and
Facilities
Programs





Today's Presenter

CDR Kurt Kesteloot
kurt_kesteloot@nps.gov

Field Services
Branch, Supervisory
Team Lead



Slide 16

AB0

Perhaps this should read "Today's Presenters" or just "Presenters"- our team is so much more than the five of us!

Allen, Diana B., 2022-05-05T14:27:21.653

NPS DEPUTY DIRECTOR OPERATIONS, EXERCISING THE DELEGATED AUTHORITY OF THE DIRECTOR
SHAWN BENGE

VISITOR AND RESOURCE PROTECTION
ASSOCIATE DIRECTOR
JENNIFER FLYNN

OPH DIRECTOR
CAPTAIN SARA NEWMAN

HEALTH AND HUMAN SERVICES

OPH DEPUTY DIRECTOR
SONYA COAKLEY

DEPUTY LIAISON/COMMUNICATIONS SPECIALIST
SUBRIA SPENCER

ADMINISTRATIVE OFFICER
ASHLEY HINES

62 DOI PHS OFFICERS

CHIEF HEALTH PROMOTION
DIANA ALLEN

CHIEF EPIDEMIOLOGY
CDR MARIA SAID

ONE HEALTH COORDINATOR
CDR DANIELLE BUTTKE

EPIDEMIOLOGIST
LCDR STEPHANIE CAMPBELL

TEAD LEAD
CAPT CHRISTEN GLIME

TEAM LEAD
CDR KURT KESTELOOT

TEAM LEAD
CAPT CRAIG UNGERECHT

Health Fellows

CDC Public Health Associate
Hasna Karim

Greening Youth Interns
Michael Mojarro
Ellen Westfall

MobilizeGreen Intern
Olivia Arias

CONSULTANT
LCDR SCOTT DALY (2022)

CONSULTANT
LCDR JESSICA SHARPE

CONSULTANT
CDR WILLIAM FOURNIER

CONSULTANT
LCDR SARAH MAYNARD

CONSULTANT
LCDR RONAN KING

CONSULTANT
LT STEPHANIE BRIDGES

CONSULTANT
CDR JEREMY MASON

CONSULTANT
LCDR TARA DONDZILA

CONSULTANT
LCDR LAURA ANNETTA

ENVIRONMENTAL HEALTH
SPECIALIST
CDR JON BLONK

CONSULTANT
LCDR ERIN KINCAID (2022)

CONSULTANT
LCDR STEPHANIE COFFEE

ENVIRONMENTAL HEALTH
SPECIALIST
LCDR GEORGE CARROLL

CONSULTANT
LCDR STEPHANIE COFFEY

ENVIRONMENTAL HEALTH
SPECIALIST
LT MATTHEW KOZLER



Mike Caldwell: Associate Director
202-513-7283

Divisions within Park Planning Facilities and Lands Directorate (Quick links to phone list)



Environmental Compliance & Cleanup Division (ECCD)



Denver Service Center (DSC)



Land Resources Division (LRD)



Bethany Barron, PE: Deputy Associate Director
303-870-1560



Park Facility Management Division (PFMD)



Historic Preservation Training Center (HPTC)



Major Construction Division (MCD)



Park Planning & Special Studies (PPSS)



Great American Outdoor Act Program Management Office



Karen G. Bergsma, PMP: Chief of Staff
202-746-4157

[ORGANIZATION CHART & PHONE LISTING \(sharepoint.com\)](#)

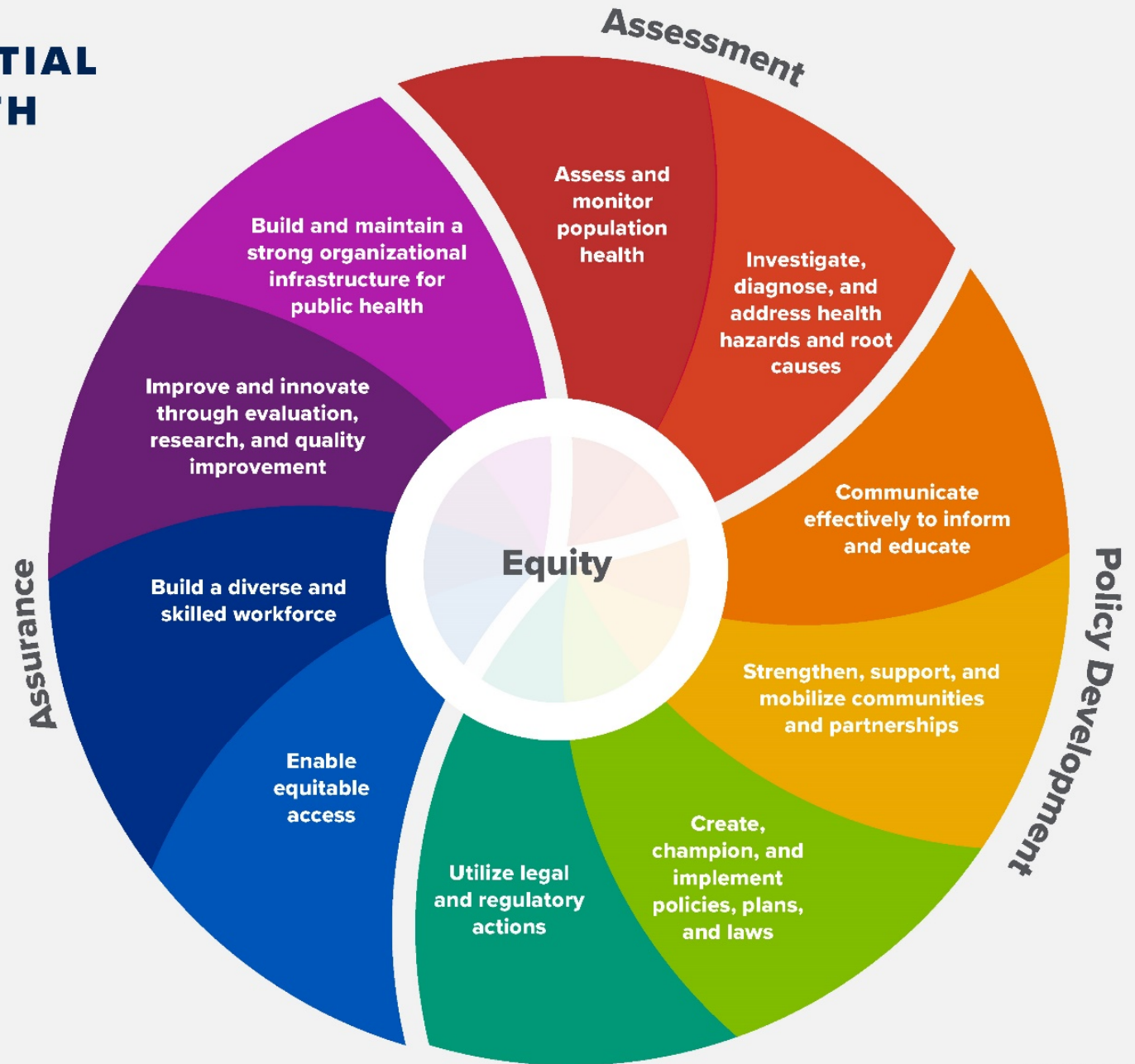
Office of Public Health

The NPS Office of Public Health (OPH) is a unique “internal health department” within the National Park Service (NPS). The OPH protects the health of almost 300 million visitors a year as well as NPS employees through prevention and response services. The OPH also promotes the health and well-being of our park visitors by illuminating and encouraging ways to use our public lands for physical, mental, spiritual health, and social well-being.

THE 10 ESSENTIAL PUBLIC HEALTH SERVICES

To protect and promote the health of all people in all communities

The 10 Essential Public Health Services provide a framework for public health to protect and promote the health of all people in all communities. To achieve optimal health for all, the Essential Public Health Services actively promote policies, systems, and services that enable good health and seek to remove obstacles and systemic and structural barriers, such as poverty, racism, gender discrimination, and other forms of oppression, that have resulted in health inequities. Everyone should have a fair and just opportunity to achieve good health and well-being.



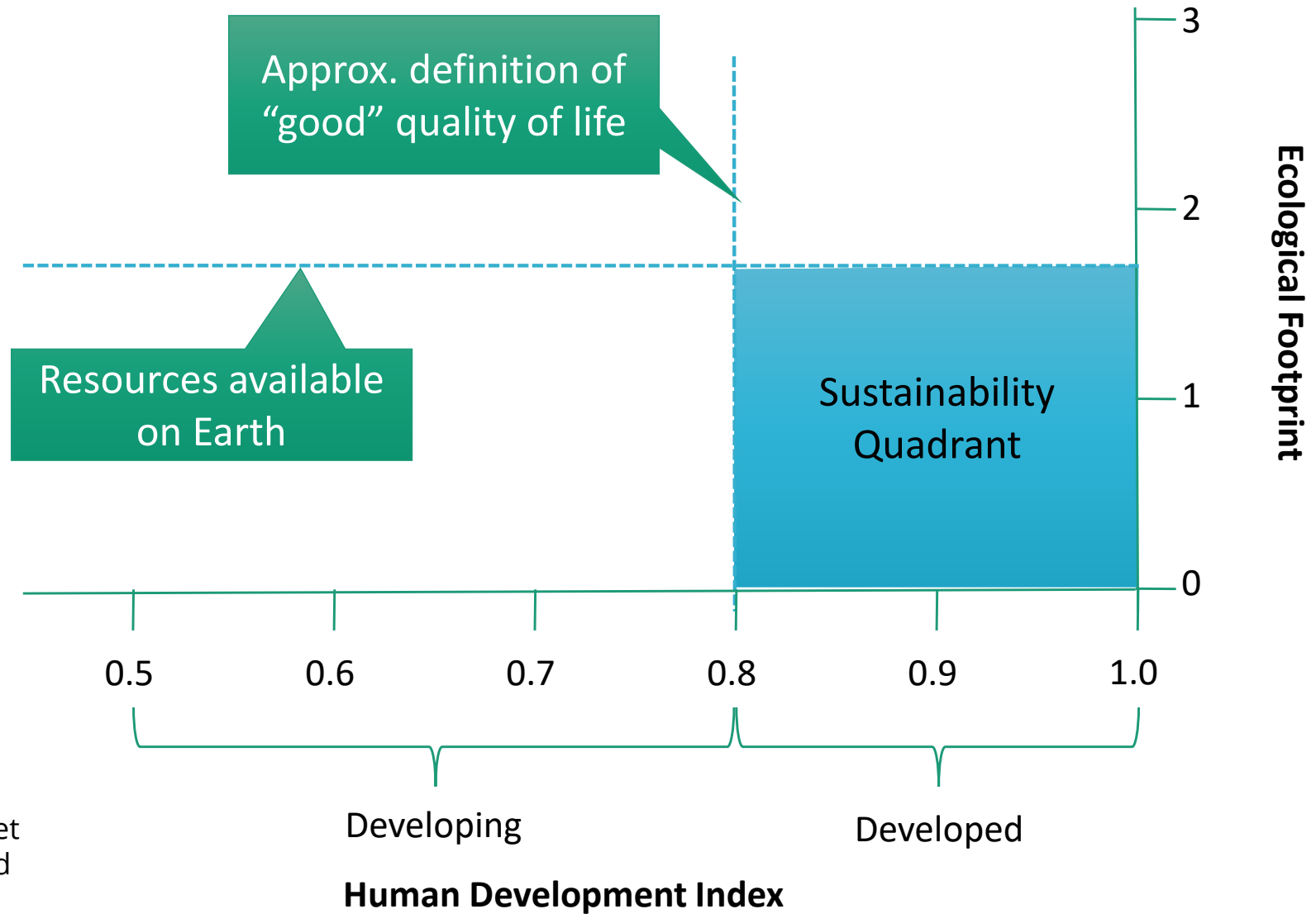
Created 2020

Source: <https://www.cdc.gov/publichealthgateway/publichealthservices/essentialhealthservices.html>

“*Sustainable development is...*

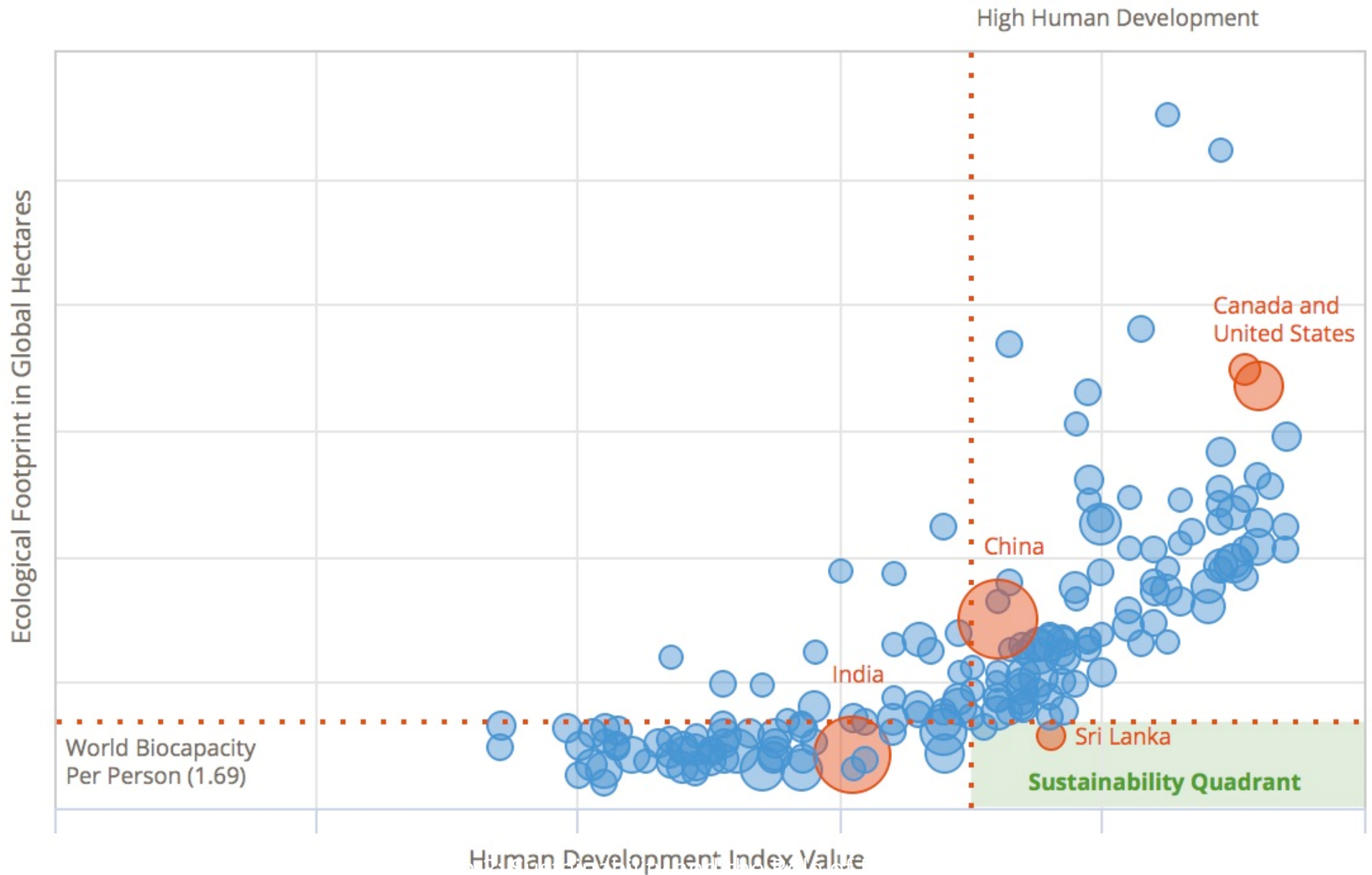
**...development that meets the needs
of the present without
compromising the ability of future
generations to meet their own
needs.”**

Development vs. Resources



Source: Living Planet Report (2006), World Wildlife Fund

Development vs. Resources





Changing Environment

- What is the new “normal”?
- What are the possible extremes?
- Are there any new variables?

Infrastructure's Role: Long-term



Highways, WWTPs
20-50 years



WW/WWTPS, Bridges
30-75 years



DW/WW Pipelines
50-100 years



Dams
50-100 years

What can we do?

- Drinking Water
- Wastewater
- Food Safety
- Recreational Water
- Backcountry
- Disease Surveillance

EO 14057: Section 401: Engaging, Education, And Training the Federal Workforce... "Agencies Shall foster a culture of sustainability and climate action; build employees' skills and knowledge Through engagement, education, and training; And incorporate environmental stewardship Values and, where appropriate, sustainability Goals and objectives into performance plans of Executives, managers, and staff."

Encourage and recommend drinking water, wastewater, food equipment, etc. that have low operation and maintenance costs and are acceptable to the park and surrounding area regarding any impacts.

What are other NPS programs doing to help?

- Project Examples
- Green Parks Plan
- NPS Climate Change Response Strategy
- DSC LEED/Envision checklist for contractors/projects

[NPS DSC-ProjectSustainabilityChecklist 4-10-20 v508](#)