

ELLSWORTH AIR FORCE BASE B-21 BED DOWN



"The views, opinions and findings contained in this report are those of the author(s) and should not be construed as an official Department of Defense position, policy or decision, unless so designated by other official documentation."

11 March 2021
Presenters – Andy Temeyer – USACE Omaha



US Army Corps
of Engineers®



EAFB B-21 Bed Down

US Army Corps of Engineers (USACE)

- Design, procurement, and field level construction agent for the bed down.

Air Force Civil Engineer Center (AFCEC)

- Official point of contact and authority for the Air Force for the bed down of facilities.
- Air Force liaison to USACE.

Air Force Global Strike Command (AFGSC)

- Primary user command.

EAFB B-21 Program Integration Office (EAFB B-21 PIO)

- Responsible for integration/coordination of B-21 requirements into existing conditions and mission set at EAFB, SD.
- Responsible for coordination of all end-user requirements into bed down-impacted facilities.

Ellsworth AFB Civil Engineering Squadron (28 CES)

- Accepting authority for real property.
- Responsible for ensuring facilities meet base requirements.

AF Installation & Mission Support Center Detachment 10 (AFIMSC Det-10)

- Represents the AFGSC and provides program policy, guidance, and goals.



EAFB B-21 Weapons System



Air Force Organizations

- Air Force Global Strike Command (AFGSC), User Command
- Dept. of the Air Force Rapid Capabilities Office (DAFRCO), Lead Prog. Office

Weapons System

- Engineering and Manufacturing Development (EMD) Phase
- Intended to eventually replace B-1 and B-2 platforms
 - Approximately 100 aircraft Air Force-wide
 - Initial conventional capability – mid 2020's
 - Nuclear certification/capability thereafter



Prime Contractor – Northrop Grumman



US Army Corps
of Engineers®



EAFB B-21 Bed Down



Basing Decisions

Led by Air Force Global Strike Command (AFGSC, Barksdale)

March 2019 – Preferred Main Operating Bases (MOB)

- Ellsworth AFB – Preferred MOB #1
- Whiteman AFB – Preferred MOB #2
- Dyess AFB – Preferred MOB #3

Environmental Impact Study/Statement – Ongoing

- Estimated Completion – June 2021
- Formal basing decisions announced thereafter



EAFB B-21 Bed Down



Ellsworth AFB Planning

- Initial Planning/Programming Began Late 2019
- Mix of Military Construction (MILCON) and Operations & Maintenance projects (O&M/FSRM) spread over 6+ years
 - MILCON is front-loaded
 - O&M/FSRM is back-loaded
 - Aggressive design/delivery schedules

*Construction cannot begin until NEPA Record of Decision is finalized.



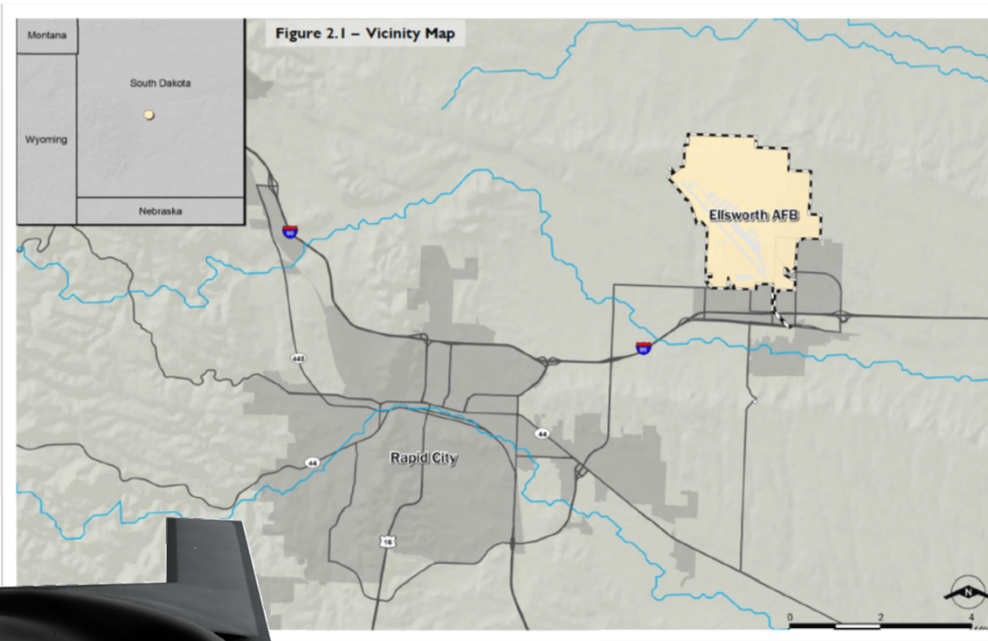
US Army Corps
of Engineers®



EAFB B-21 Bed Down

Vicinity Map

- Northeast of Rapid City



EAFB B-21 Bed Down

Bed Down Area

- EAFB North Ramp
- Alert (future)



US Army Corps
of Engineers®



Society of
SAME
American Military Engineers

EAFB B-21 Bed Down

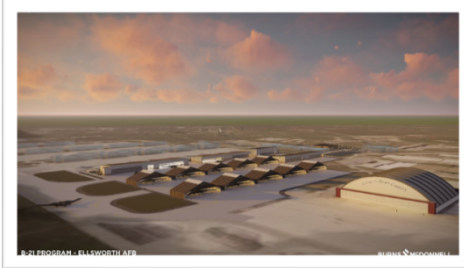
- New Construction
- Demolition
- Add/Alter
- Infrastructure/Utilities
- Airfield Paving
- Hazardous Materials
- Minor improvements
- Facility "Tails"/Fit-out
- Equipment Relocation

Ellsworth AFB Project Types

- Approaching \$1 billion in construction required at EAFB.
 - Estimated \$270M-\$410M in FY21/22.
- Wide cross section of minor and major construction.
 - Stem from direct and indirect impacts of the bed down.
 - Larger projects are front-loaded.
 - Requirements for renovations and repairs still being defined.
 - Flightline and non-flightline work.
 - Secure and non-secure work (ICD/ICS 705).



EAFB B-21 Bed Down



Unique Features and Common Threads

- Mostly design-bid-build.
- Secure Facilities.
 - Will require full or partial oversight during construction.
- Unique phasing constraints.
 - Maintain continuity of current operations.
- Airfield Paving.
- Utilities and communications work.
- FF&E, other Equipment as bid options.



Note: All project information is provided for information only, is considered approximate, and is subject to change without notice.



EAFB B-21 Bed Down



Ellsworth AFB Construction Projects

Construction contracts typically issued through USACE – Omaha. Some contracts may be issued locally through EAFB Contracting.

FY21-FY23 Construction projects currently under design

- FY24 and beyond entering planning
- First construction contracts forthcoming in FY21

AE IDIQs - USACE Kansas City (synopsis issued Sept 2020)

- USACE Omaha (synopsis issued 29 December 2020)



Note: All project information is provided for information only, is considered approximate, and is subject to change without notice.



US Army Corps
of Engineers®



Society of
SAME
American Military Engineers

EAFB B-21 Bed Down

Size: +/- 90,000 SF
Type: MILCON.
Contract Type: Design-Bid-Build.
Magnitude: \$80-100M.
Target Award: FY21Q4.

B-21: Low Observable Restoration Facility
Rendering Provided by Burns & McDonnell



Note: All project information is provided for information only, is considered approximate, and is subject to change without notice.

Low Observable Restoration Facility (LO Hangar)

- Two-Bay Hangar with “paint booth” type functionality.
- Includes associated airfield apron and infrastructure.
- Includes admin and support spaces.
- May include O&M options for FF&E, A/V, IDS, etc.
 - Sources sought (w9128F21SM002, 14 Oct 2020).
 - Targeting bifurcated source selection process.
 - Target initial advertisement (FY21Q3).
 - Target pricing amendment (FY21Q3).



EAFB B-21 Bed Down

Size: +/- 55,000 SF
Type: MILCON.
Contract Type: Design-Bid-Build.
Magnitude: \$50-70M.
Target Award: FY22Q2.

B-21: Washrack and General Maintenance Hangar
Rendering Provided by Burns & McDonnell



Note: All project information is provided for information only, is considered approximate, and is subject to change without notice.

Washrack and General Maintenance Hangar

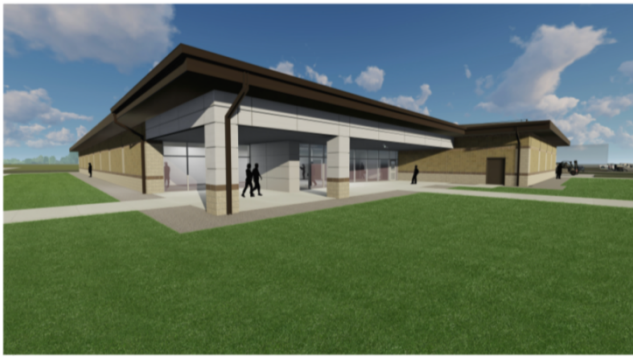
- Two-Bay Hangar.
- Includes associated airfield apron and infrastructure.
- Includes admin and support spaces.
- May include O&M options for FF&E, A/V, IDS, etc.
 - Sources sought (issued 15 Jan 2021, W9128F21SM017).
 - Targeting bifurcated source selection process.
 - Target initial advertisement (FY21Q4).
 - Target pricing amendment (FY22Q1).



EAFB B-21 Bed Down

Size: +/- 45,000 SF
Type: MILCON.
Contract Type: Design-Bid-Build.
Magnitude: \$20-40M.
Target Award: FY22Q2.

B-21: Mission Operations Planning Facility
Rendering Provided by Burns & McDonnell



Note: All project information is provided for information only, is considered approximate, and is subject to change without notice.

Mission Operations Planning Facility (MPF)

- Secure operations planning facility (ICD/ICS 705).
- On shared site with B-21 FTD.
- Includes admin and support spaces.
- May include O&M options for FF&E, A/V, IDS, etc.
 - Sources sought (issued 17 Dec 2020, W9128F21SM011).
 - Targeting bifurcated source selection process.
 - Target initial advertisement (FY21Q4).
 - Target pricing amendment (FY22Q1).



US Army Corps
of Engineers®

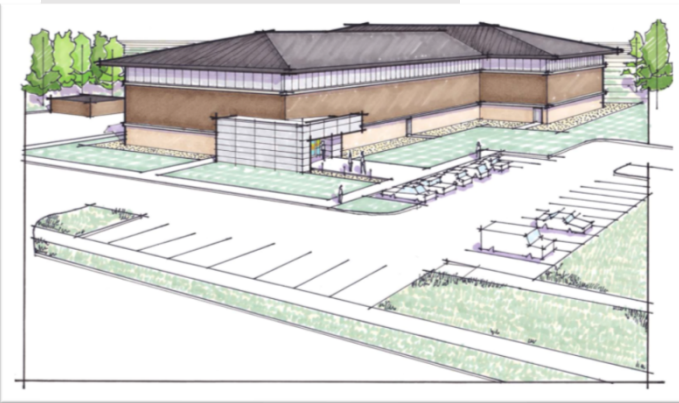


Society of
SAME
American Military Engineers

EAFB B-21 Bed Down

Size: +/- 55,000 SF
Type: MILCON.
Contract Type: Design-Bid-Build.
Magnitude: \$30-50M.
Target Award: FY22Q2.

B-21: Field Training Detachment Facility
Rendering Provided by Merrick/Blair-Remy



Note: All project information is provided for information only, is considered approximate, and is subject to change without notice.

Field Training Detachment Facility (FTD)

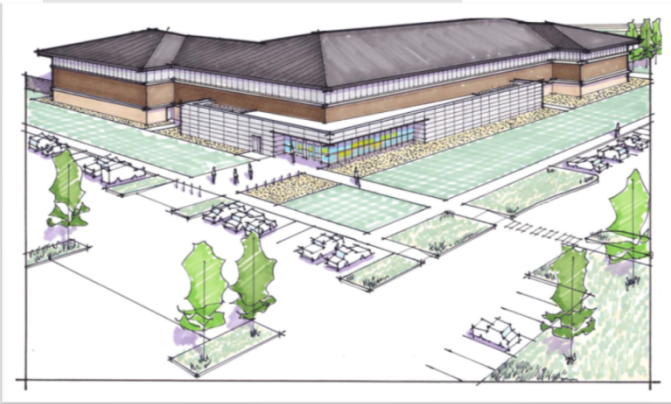
- Secure training and classroom facility (ICD/ICS 705).
- On shared site with B-21 MPF.
- Includes admin and support spaces.
- May include O&M options for FF&E, A/V, IDS, etc.
- Sources sought (issued 17 Dec 2020, W9128F21SM011).
- Targeting bifurcated source selection process.
- Target initial advertisement (FY21Q4).
- Target pricing amendment (FY22Q1).



EAFB B-21 Bed Down

Size: +/- 90,000 SF
Type: MILCON.
Contract Type: Design-Bid-Build.
Magnitude: \$55-75M.
Target Award: FY22Q2.

B-21: Formal Training Unit/AMU
Rendering Provided by Merrick/Blair-Remy



Note: All project information is provided for information only, is considered approximate, and is subject to change without notice.

Formal Training Unit (FTU)

- Secure aircraft maintenance and squadron operations (ICD/ICS 705). Also includes flight kitchen.
- Includes admin and support spaces.
- May include O&M options for FF&E, A/V, IDS, etc.
 - Sources sought (issued 4 Jan 2021, W9128F21SM013).
 - Targeting bifurcated source selection process.
 - Target initial advertisement (FY21Q4).
 - Target pricing amendment (FY22Q1).



EAFB B-21 Bed Down

Size: +/- 30,000 SF
Type: MILCON.
Contract Type: Design-Bid-Build.
Magnitude: \$20-30M.
Target Award: FY22Q2.

B-21: ADAL Flight Simulator Facility
Rendering Provided by Merrick/Blair-Remy



Note: All project information is provided for information only, is considered approximate, and is subject to change without notice.

Add/Alter Flight Simulator Facility (ADAL Sim Facility)

- Secure training and simulator facility (ICD/ICS 705).
- Addition to existing B-1B simulator facility at EAFB.
- Includes admin and support spaces.
- May include O&M options for FF&E, A/V, IDS, etc.
 - Sources sought (issued 13 Jan 2021, W9128F21SM016).
 - Targeting bifurcated source selection process.
 - Target initial advertisement (FY21Q4).
 - Target pricing amendment (FY22Q1).



EAFB B-21 Bed Down

Size: +/- 130,000 SF
Type: O&M.
Contract Type: TBD.
Magnitude: \$10-20M.
Target Award: FY22Q3.

EAFB PRIDE Hangar (Existing)



Note: All project information is provided for information only, is considered approximate, and is subject to change without notice.

Convert PRIDE Hangar

- Renovation of existing historical hangar to accommodate aviation ground equipment (AGE).
- Scoping still being determined.
 - Sources sought (FY21Q4).
 - Target advertisement (FY22Q2).



EAFB B-21 Bed Down

Size: +/- 25,000 SF
Type: O&M.
Contract Type: TBD.
Magnitude: \$1-5M.
Target Award: FY22Q3.

(No Image Available)

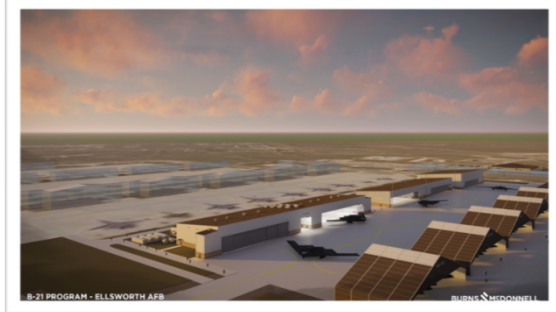
Convert Dock 82 to Supply

- Renovation of existing facility to accommodate aircraft parts.
- Scoping still being determined.
- Minimal renovation, mostly interior demolition and fit-out.
 - Sources sought (FY21Q4).
 - Target advertisement (FY22Q2).

Note: All project information is provided for information only, is considered approximate, and is subject to change without notice.



EAFB B-21 Bed Down



Outlying Program (FY23 & beyond)

- Radio Frequency Facility (Hangar)
- Phase Maintenance Hangar
- Fuel Cell Maintenance Hangar(s)/Fuel Cell Support Facility
- Environmental Protection Shelters (EPSs)
- Supply Warehouse
- Weapons Loader-Trainer (WLT) 1 & 2
- Armament Shop (WRSS)
- Airfield Paving Projects (various)
- Simulator Renovation/Addition
- B-1B Squadron Ops Renovations
- Alert Apron/Alert Facility
- Existing Dock Renovations (various, General Maintenance)
- Weapons Generation Facility (Non B-21)



US Army Corps
of Engineers®



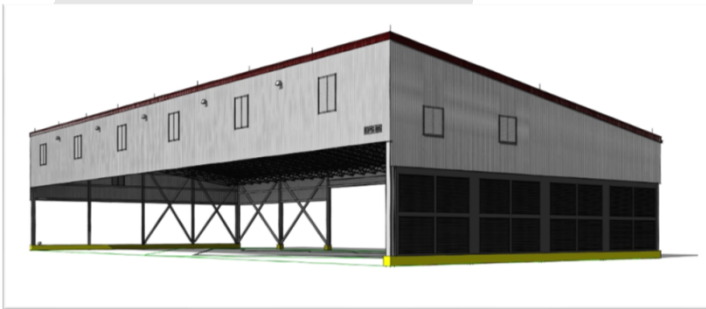
Note: All project information is provided for information only, is considered approximate, and is subject to change without notice.

Society of
SAME
American Military Engineers

EAFB B-21 Bed Down

Size: +/- 20,000 SF
Type: Research & Development.
Contract Type: Design-Build.
Magnitude: \$3-8M.
Target Award: FY21Q2.

B-21: Test EPS #2
Rendering Provided by USACE Omaha District



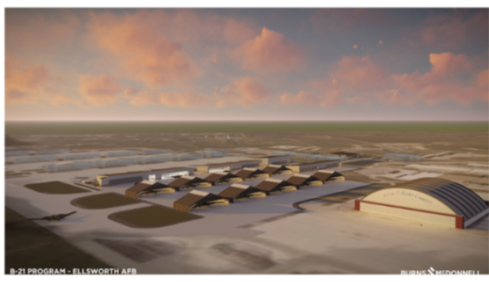
Note: All project information is provided for information only, is considered approximate, and is subject to change without notice.

Test Environmental Protection Shelter (EPS) #2

- Program RDT&E activity to build and test an EPS
- Temporary single-bay shelter facility.
- Aggressive delivery schedule.
- Results to inform +/- 30 shelters planned at EAFB.
 - Minimal building systems.
 - Built on/around existing apron.
 - Future shelters may or may not resemble the test facility.
 - Will proceed independent of pending MOB 1 Record of Decision.



EAFB B-21 Bed Down



Procurement

- Most projects are design-bid-build due to complexity
- Some design-build possible (to be determined)
- RFP for construction services
 - Source selection
 - Best Value Tradeoff (BVTO)
 - Bifurcated process possible
 - Other (MATOC, LPTA, etc.)
 - Market research beginning for construction



US Army Corps
of Engineers®



Resources

B-21 EIS - <https://www.b21eis.com/>

B-21 Raider – <https://www.northropgrumman.com/what-we-do/air/b-21-raider/>

AFCEC - <https://www.afcec.af.mil/>

USACE (Omaha) - <https://www.nwo.usace.army.mil/>

System for Award Management (SAM) - <https://beta.sam.gov/>

USACE NWO AE IDIQ – Search for “W9128F21R0010” on SAM Website.

The views, opinions and findings contained in this report are those of the author(s) and should not be construed as an official Department of Defense position, policy or decision, unless so designated by other official documentation.



US Army Corps
of Engineers®



Society of
SAME
American Military Engineers



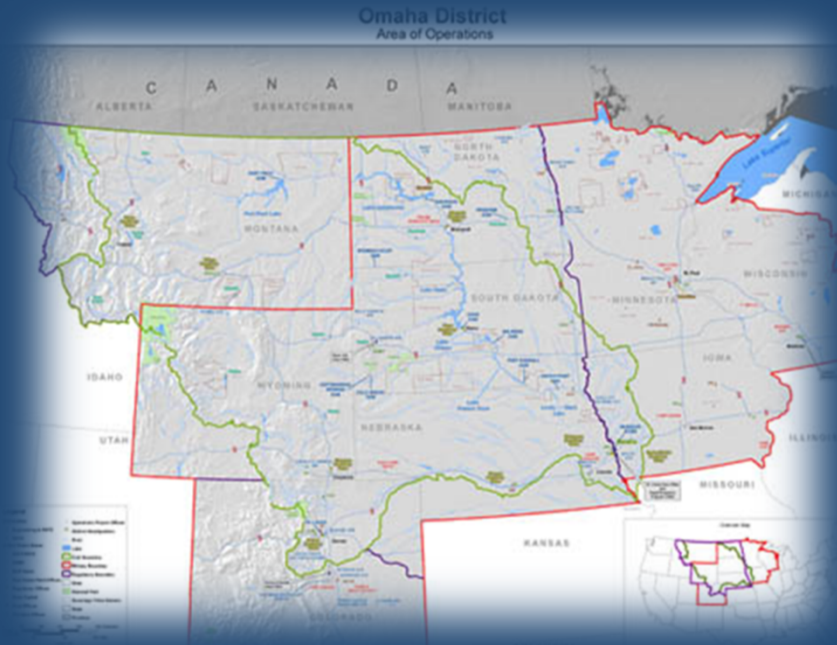
US Army Corps
of Engineers®



Society of
SAME
American Military Engineers

Meet the Team

Physically located at the Edward Zorinsky Federal Building - Omaha, NE but responsible for the entire District



Daniel M. Curado
Chief, Small Business Program
Daniel.M.Curado@usace.army.mil

Matthew D. Hibbert
Small Business Professional
Matthew.D.Hibbert@usace.army.mil



US Army Corps
of Engineers®



Society of
SAME
American Military Engineers

What do we buy?

Contract Opportunities

[Omaha Contractor Quality Management \(CQM\) Training](#)

[Other Districts CQM Classes](#)

[Contracting Opportunities \(beta.SAM\)](#)

[Upcoming Opportunities](#)

[What we buy...and don't buy](#)

[Current Small Business MATOCs](#)

[Current LARGE Business MATOCs](#)

EVERYTHING!

...not true, but we do buy a lot

Small Business Website -

<https://www.nwo.usace.army.mil/Business-With-Us/Small-Business/>



US Army Corps
of Engineers®



Society of
SAME
American Military Engineers

Contracting Opportunities

Contract Opportunities

[Omaha Contractor Quality Management \(CQM\) Training](#)

[Other Districts CQM Classes](#)

[Contracting Opportunities \(beta.SAM\)](#)

[Upcoming Opportunities](#)

[What we buy...and don't buy](#)

[Current Small Business MATOCs](#)

[Current LARGE Business MATOCs](#)

Small Business Website -
<https://www.nwo.usace.army.mil/Business-With-Us/Small-Business/>



US Army Corps
of Engineers®



Society of
SAME
American Military Engineers

Contact

Andy Temeyer, andy.c.temeyer@usace.army.mil
Project Manager, Registered Architect, LEED AP BD+C, USACE

Matt Hibbert, matthew.d.hibbert@usace.army.mil
USACE Omaha Small Business Specialist

"The views, opinions and findings contained in this report are those of the author(s) and should not be construed as an official Department of Defense position, policy or decision, unless so designated by other official documentation."

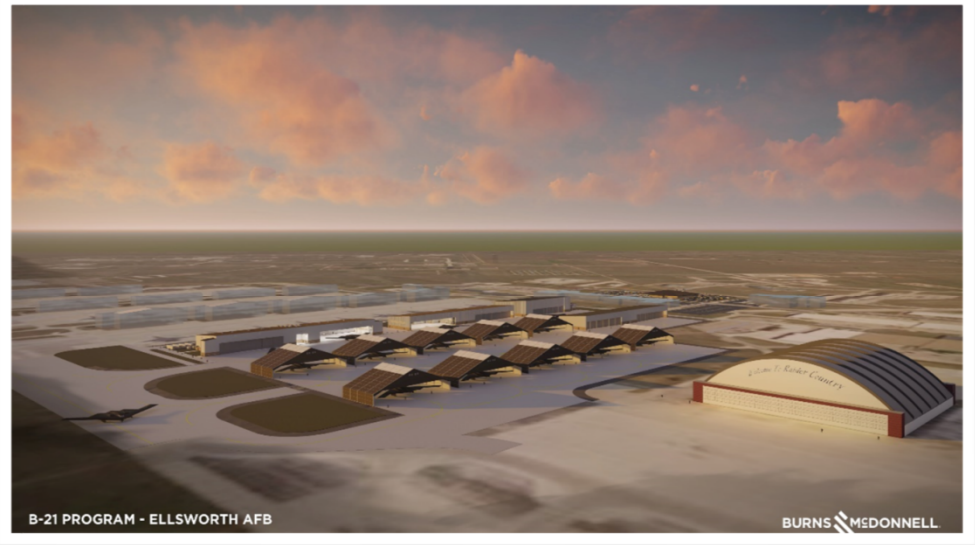


US Army Corps
of Engineers®



Society of
SAME
American Military Engineers

Questions?



"The views, opinions and findings contained in this report are those of the author(s) and should not be construed as an official Department of Defense position, policy or decision, unless so designated by other official documentation."



US Army Corps of Engineers®



Society of
SAME
American Military Engineers