



# OFFUTT AFB PROGRAMS Projects/Opportunities

Presenters:

Donald Fucik, PE  
AFCEC/CFD  
Offutt Flood Recovery Program Manager

Rob Hufford II, PE  
55<sup>th</sup> Civil Engineer Squadron  
Chief, Construction Management

# OFFUTT FLOOD RECOVERY PROGRAM

## Offutt AFB March 16 2019

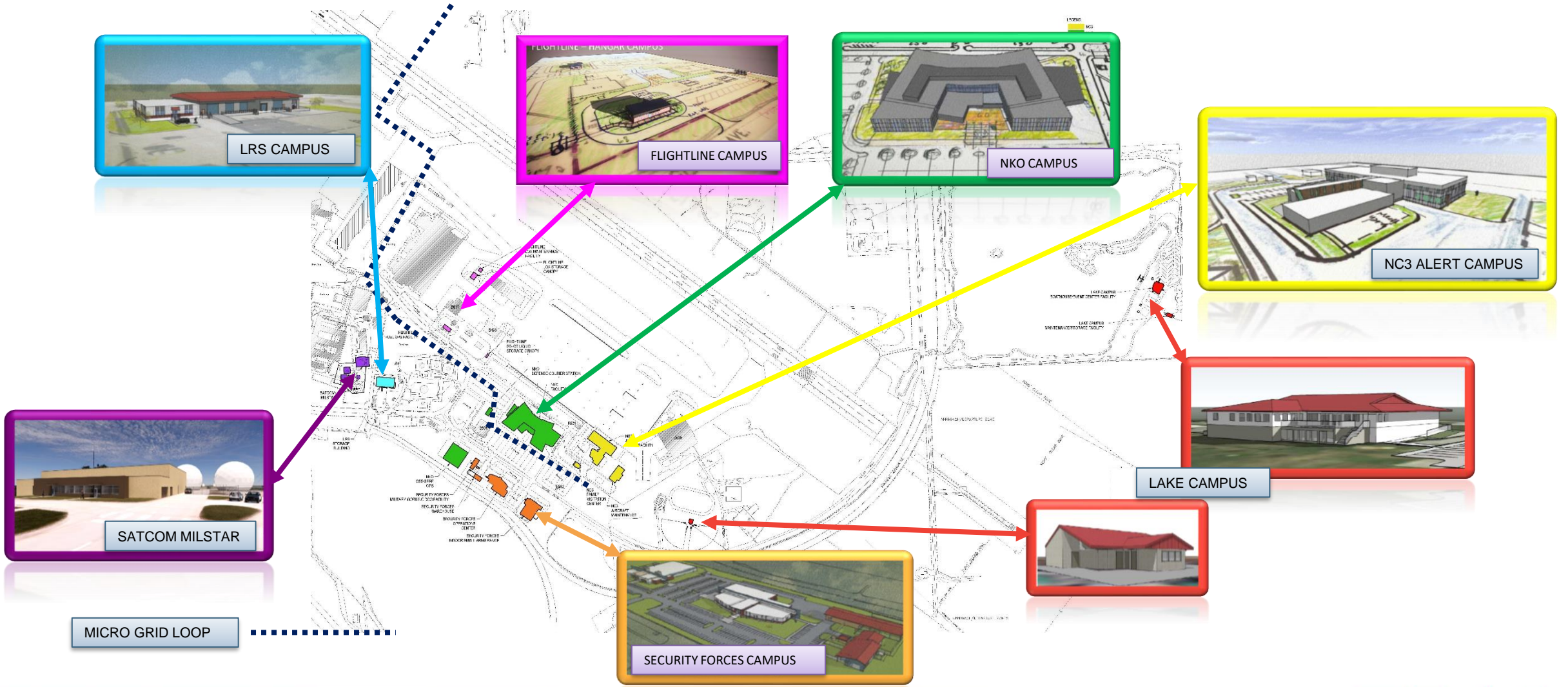


# OFFUTT FLOOD RECOVERY PROGRAM

## Military Construction



# CAMPUS WIDE PLAN

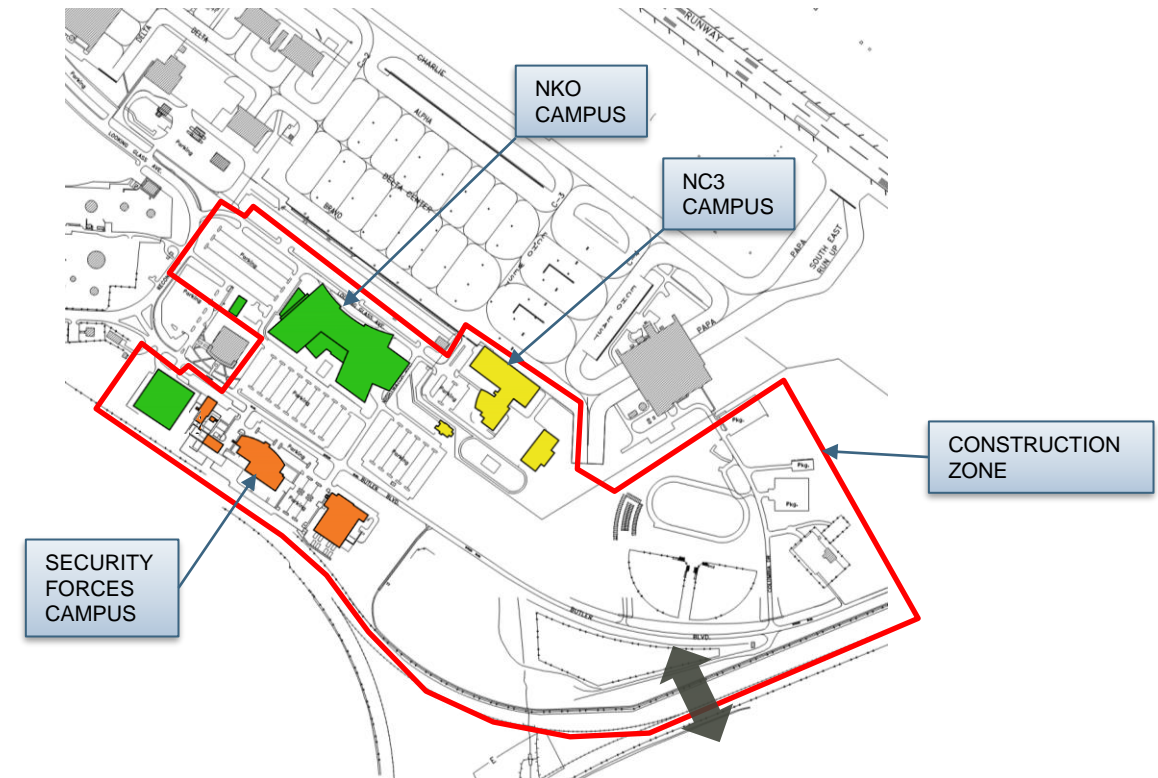


# DEMOLITION and SITE PREPARATION

## STATUS: Awarded

**Description of the Project:** The project will include building demolition and infrastructure construction for southeast area of Offutt, AFB affected by the flood of 2019, and primarily provides infrastructure and rough grade establishment for the three (3) campuses illustrated. Security zone establishment will be an integral part of the project. The solicitation will include the following:

- Building demolition: 318,000 SF +/-
- Utility and paving demolition
- Significant Earthwork: 280,000 – 320,000 +/- CY Fill
- Water, sanitary and storm sewer trunk line replacement
- Sanitary sewer lift station replacement
- HP natural gas line replacement
- Storm Water Mitigation
- Construction Zone fencing
- Construction Zone access Entry Control Point (ECP)



# NC3 Alert Campus

## STATUS: Ready to Advertise

### Design Build - Two Phase Acquisition

**Security Requirements for Design & Construction: ICD 705-1, ICS 705-1 and IC Tech Spec for ICD/ICS 705**

**Description of Campus:** The NC3 Alert Campus provides a consolidated facilities that will house the HQ offices of the National Airborne Operations Center (NAOC) and 1st Airborne Command and Control Squadron (1ACCS) and the NAOC Alert Force living quarters. The project supports the STRATCOM mission of providing strategic nuclear deterrence. The campus will be a Design-Build BVTO Solicitation and include the following:

- **Alert Facility** (143,000 SF+/-): The multi-story facility includes a watch floor, controlled space, sleeping quarters, a kitchen/dining area, a fitness center, administrative & storage areas, a loading dock, an auditorium, and a Simulator High-Bay with Overhead Crane
- **Aircraft Maintenance / Parts Storage Warehouse** (22,900 SF+/-): the low-rise facility includes open space for aircraft spares boxes, administrative areas, equipment rework shop with repair bay, and drive-through bays.
- **Family Visitation Center/Comm Node**: (5,100 SF+/-): The one-story family visitation center includes family rooms, a multi-use kitchen, open gathering space, and an in-processing center. The attached Communication Node will house secure voice/data for the entire lower campuses.
- **Site work**: includes paving, earthwork, utility connections, security fencing, loading areas, outdoor layout/storage area, playgrounds, and recreational amenities.



NC3 Alert Facility



Aircraft Maintenance /Parts Storage Warehouse



Family Visitation Center

# NKO CAMPUS

## STATUS: Draft RFP

**Description of Campus:** The NKO campus will provide consolidated facilities for the 55 OS. The mission provides worldwide reconnaissance, real-time intelligence, command and control, information warfare and combat support to U.S. leaders and commanders. The project will be three (3) solicitations as follows:

- **NKO Main & Courier Station Design Build – Two Phase Acquisition**
  - NKO Facility (418,00 SF +/-); The three-story facility includes controlled space, administrative areas, classrooms, and storage areas.
  - Courier Station (4,800 SF +/-); The one-story facility includes the following: dispatch, reception and processing of classified mail and parcels, administrative areas, garage parking, and secured space.
  - Site work includes: earthwork, paving, loading areas, outdoor plazas, security fencing, utility connections and landscaping.
  - **Security Requirements for Design & Construction: ICD 705-1, ICS 705-1 and IC Tech Spec for ICD/ICS 705**
- **OSS/SERE Warehouse Design Build – One Step Acquisition**
- OSS/SERE Warehouse (48,000 SF +/-); the one-story high-bay facility includes training areas, equipment storage, administrative areas, drive in bays, and a loading dock.
  - Site work includes: earthwork, paving, utility connections, loading areas, and landscaping.
- **Flight line Parking Area - Design Bid Build - Small Business**
- Project includes: earthwork, paving, and lighting.



**NKO Facility**



**Defense Courier Station**



**OSS/SERE Warehouse**

# SECURITY CAMPUS

## STATUS: Source Selection Phase 1

### Full and Open – Two Phase Acquisition

**Description of Campus:** The project will consolidate security, law enforcement, police services, investigation, training, information and personnel security, resource protection, and confinement operations into four facilities. The campus will be a Design-Build BVTO Solicitation and include the following:

- **Military Working Dog (MWD) Facility** (14,400 SF+/-) The one-story facility includes dog kennels, office space, and veterinarian facilities for the Military Police.
- **Storage Facility** (14,500 SF+/-) The one-story facility includes general purpose storage and canopy for the MWD training area.
- **Security Operations Facility** (45,400 SF+/-) the one-story facility is the command center for the Security Forces and includes operations centers, training, administrative, and PI storage areas.
- **Small Arms Range** (40,400 SF+/-):the one-story facility includes a 50-meter indoor firing range with 28 firing positions. It will also include poured in place concrete walls and roof with baffles and back stop; ventilation and filters are also required.
- **Site Work:** includes parking, loading areas, MWD training area, a machine gun firing range,





# SATCOM MILSTAR CAMPUS

**STATUS: 35% Designed**

## **Design Bid Build – Two Phase Acquisition**

**Description of Project:** The project will provide space for a survivable Satellite Communications Ground Terminal facility to support the Milstar program and achieve the objective of a global, secure, nuclear-survivable space-based communication system.

The 22,000 SF +/- One-story facility will include:

- High Altitude Electromagnetic Pulse (HEMP) shielding (20,700 SF+/-)
- Controlled Space with back up power
- Administrative areas
- Self-contained air conditioning systems
- Site work includes: utility connections, paving, retaining walls, security fencing, and structures for placing of satellite antennas.



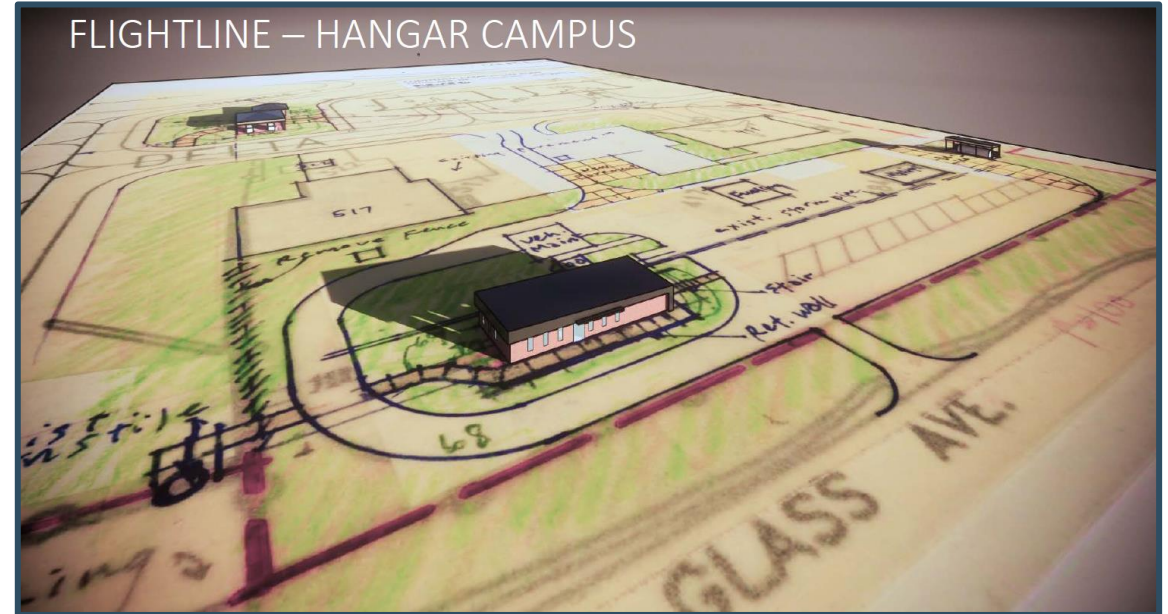
# FLIGHTLINE HANGAR CAMPUS

## STATUS: Awaiting Authority to Award

### Small Business

**Description of Campus:** The project provides support for the POL and Wing missions. The campus will be a Design-Build, BVTO solicitation and will include the following facilities:

- **Petroleum Operations Facility** (4,800 SF+/-): The one-story facility will include customer services areas, administrative space, and a petroleum laboratory.
- **De-Icing Storage Facility** (1,050 SF+/-): The one-story shed will provide weather cover for de-icing tanks with drive up capabilities
- **LOX Storage Facility** (4,800 SF+/-): The one-story shed will provide weather cover for liquid oxygen tanks with drive up capabilities for delivery.
- **LOX Maintenance Facility** (1,850 SF+/-) : The one-story facility will provide areas for maintaining enclosed space for maintenance and storage of LOX equipment, a restroom, and an office.
- **Site work:** includes earthwork, phased demolition, paving, lighting, and perimeter security fencing.



# LOGISTIC READINESS SQUADRON CAMPUS

**STATUS: Awarded**

## **Design Bid Build – One Step Acquisition**

•**Description of Project:** The project provides critical logistics support for the 55th Wing, STRATCOM & the 595<sup>th</sup> C2G. The project will be a DBB solicitation and include the following:

- One-story (27,300 SF+/-) general purpose storage facility with loading docks, administrative and customer service areas
- Site work includes: paving and hardstand areas with 64,000 SF+/- of open storage, loading areas, a truck scale, utility connections, parking and lighting.



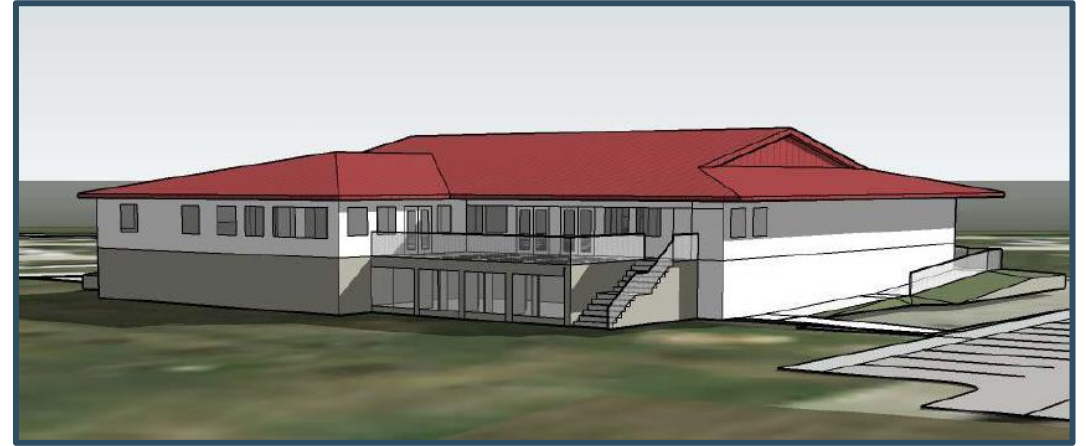
# LAKE CAMPUS

## STATUS: Awarded

### Design Build – Small Business Set Aside

**Description of Campus:** The Lake Campus will provide critical recreation needs to military families and retirees. It includes a Consolidated Recreation & Event Center, an Equipment Storage Facility and a Softball Complex. The project will be two (2) solicitations as follows:

- **Consolidated Recreation Facility**
- Consolidated Recreation and Event Center (10,200 SF+/-), one-story event center and campground management facility
  - Equipment Maintenance Facility (2,900 SF+/-) one-story storage facility
  - Site work includes: RV camping pad replacement and service hook ups, Miscellaneous Recreation Facilities (Playgrounds, Volley ball), Paving, Utility Replacement, & Lake Bank Stabilization
- **Softball Complex**
- Softball Complex facility (2,500 SF+/-), one story with restrooms & equipment storage
  - Site work includes: Repair of two softball fields, fencing, paving, utility connections and lighting



Consolidated Recreation Facility



Equipment Maintenance Facility



Softball Complex Facility

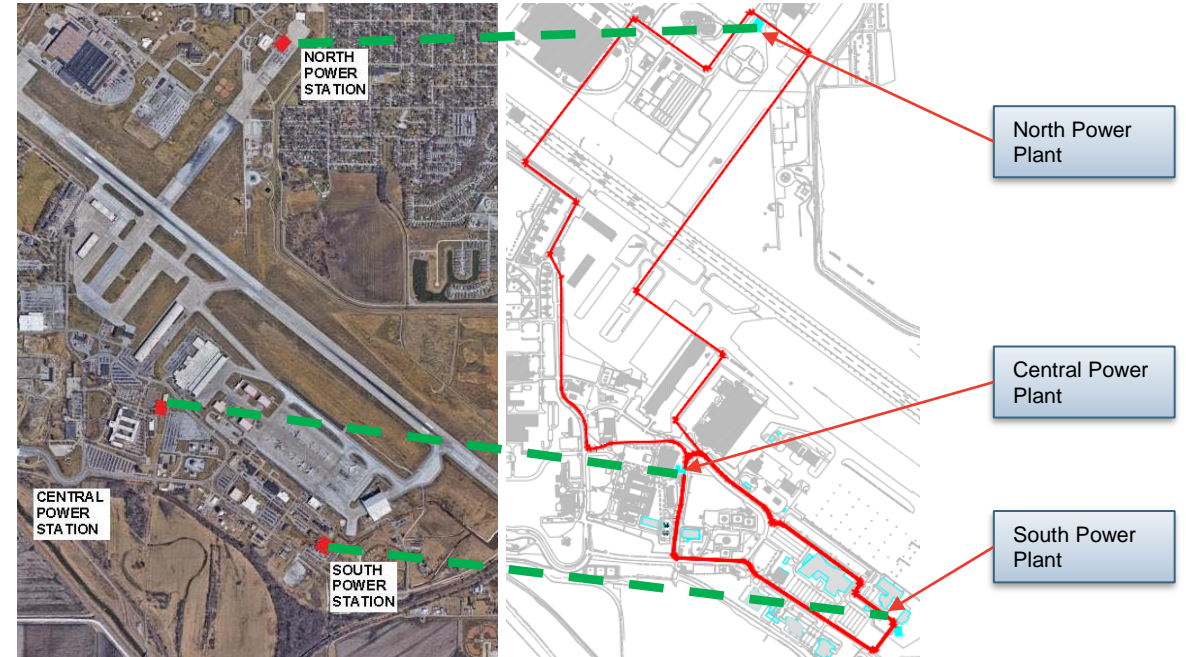
# EMERGENCY POWER MICROGRID

## STATUS: 35% Design

### Project Being Reprogrammed into ERCIP Program

**Description of Project:** The project will be constructed in 2-Phases (lower loop and upper loop and will provide back up power for critical facilities in case of commercial outage & isolation capabilities from the commercial grid to mitigate potential terrorist attacks and known power outages. The project includes the following:

- 17.5 Mega-Watt,, EPA Tier 4, 13.8 KV continuous rated, Diesel Engine Generators (7 @ 2500KW each)
- Associated distribution assets (distribution bus, switchgear, etc.)
- Site work includes: distribution lines, diesel fuel line, demolition, and service vehicle parking



**Site Plan – Emergency Power Microgrid**

# OFFUTT OUTLOOK

- **FY22**
  - MACC
    - 5 Year, \$90M aggregate maximum, No Limit per Task Order
    - No target for Quantity of Primes; preference is to keep to a manageable quantity for streamlining process
  - SABER
    - 5 Year, \$60M, up to \$1M per Task Order
    - Award to a Single Prime
  - Repair Trestle – Full remove/replace existing structure; in Design currently
  - Repair SAC Center – D-B-B; Full depth replacement, ~1/2 mile, 3 lane
- **FY23-FY26**
  - B500/515 Recapitalization – D-B-B; Phased Construction
  - Construct Weather Wing Standby Power – D-B-B
  - Renovate Dorms 364/365 – In Design

