

DENVER AREA OFFICE OVERVIEW

Neal M. Parker, Denver Area Engineer
June 28, 2022

"The views, opinions and findings contained in this report are those of the authors(s) and should not be construed as an official Department of the Army position, policy or decision, unless so designated by other official documentation."



US Army Corps
of Engineers®



OUTLINE

- USACE Denver Area Office Overview
- DAO Structure
- Current Area Work
- Future Area Work
- Challenges
- Q&A



US Army Corps
of Engineers®



OMAHA DISTRICT – DENVER AREA OFFICE



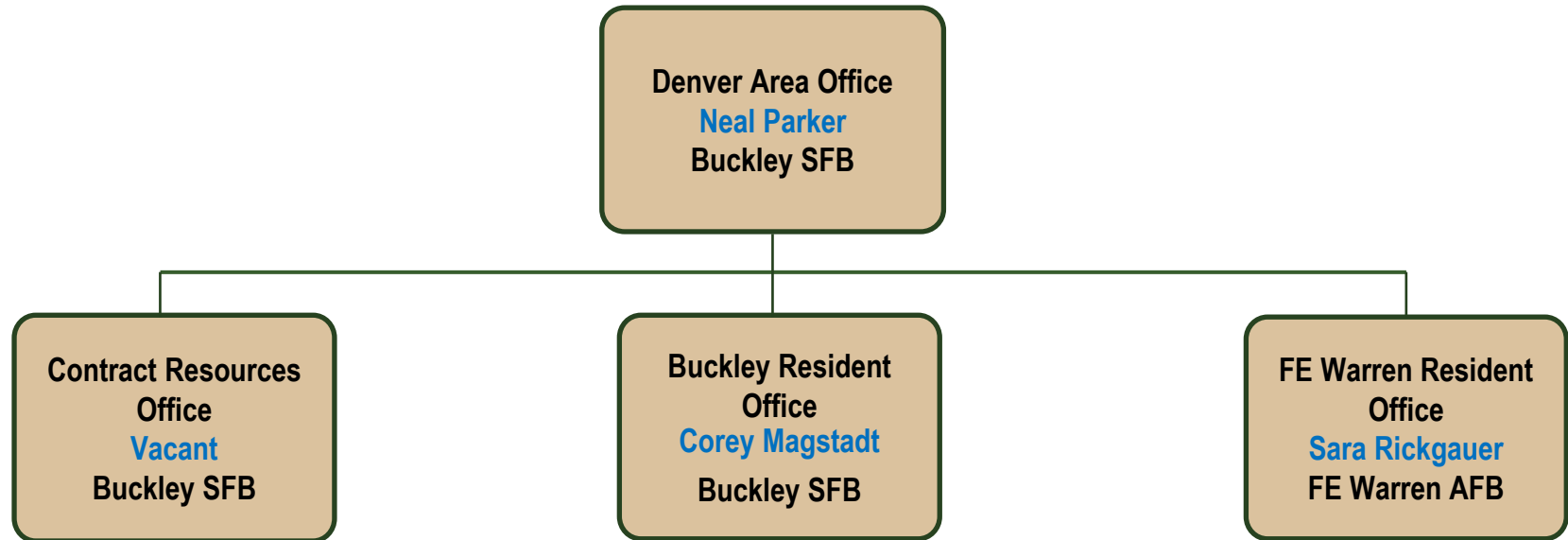
- Formed on February 13, 2017
- Areas of Responsibility
 - Buckley SFB
 - FE Warren AFB
 - Army Reserve Facilities
 - VA Medical Center/NCA
 - Department of Commerce (NIST)
 - Tri-Lakes Dam Sites
 - Boulder County Restoration Work



**US Army Corps
of Engineers®**



DENVER AREA OFFICE ORGANIZATION



US Army Corps
of Engineers®



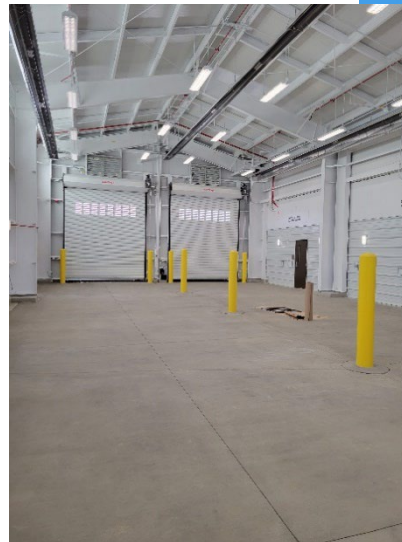
CURRENT WORK



Operations Facility,
Buckley SFB



Command Post Renovation,
FE Warren AFB



Large Vehicle Inspection Port (LVIP),
Buckley SFB



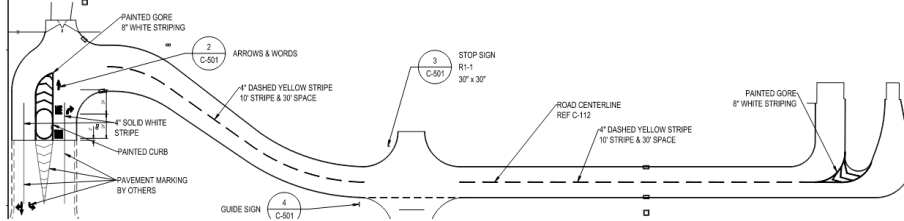
US Army Corps
of Engineers®



CURRENT WORK



Medical and Vet Clinic
FE Warren AFB



88th USARC Paving
J.P. Martinez US Army Reserve, Aurora, CO



Cache la Poudre
Greeley, CO



US Army Corps
of Engineers®



BUCKLEY SFB

Project Name	Amt (\$M)	Type
Large Vehicle Inspection Point (LVIP)	4.8	MILCON
Operational Support Facility (SOF)	34.2	MILCON
Work for Others (Security)	219.6	ISS
88 th USARC Paving	1.1	O&M

ISS = Interagency Support Services
MILCON = Military Construction
O&M = Operations and Maintenance



US Army Corps
of Engineers®



FE WARREN AFB

Project Name	Amt (\$M)	Type
(WFO) D/B FEW Medical Clinic Renovation	42.5	WFO
Renovation BLDG 250, Command Post	3.0	O&M
Phase I, Cache la Poudre (Greeley)	1.1	CIV
Weapon Storage and Maintenance Facility	145.7	MILCON

WFO = Work For Other Districts

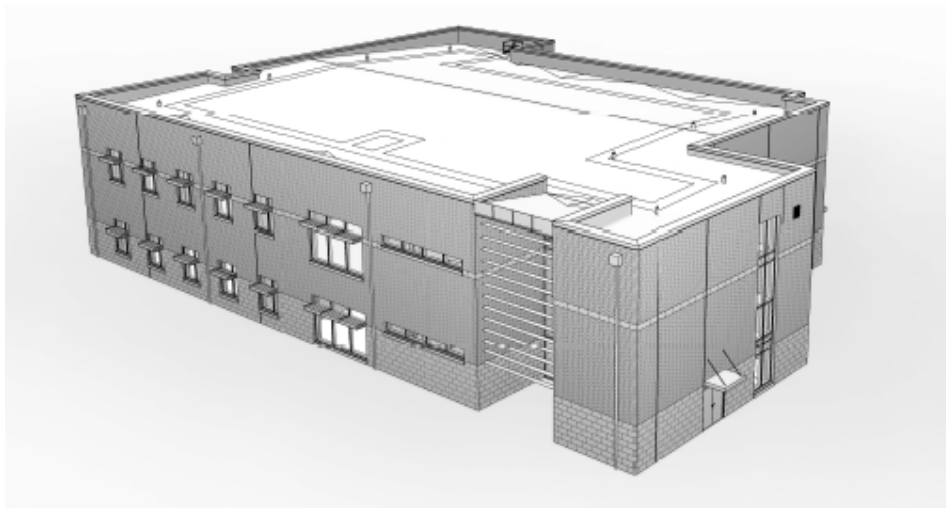
CIV = Civil Works



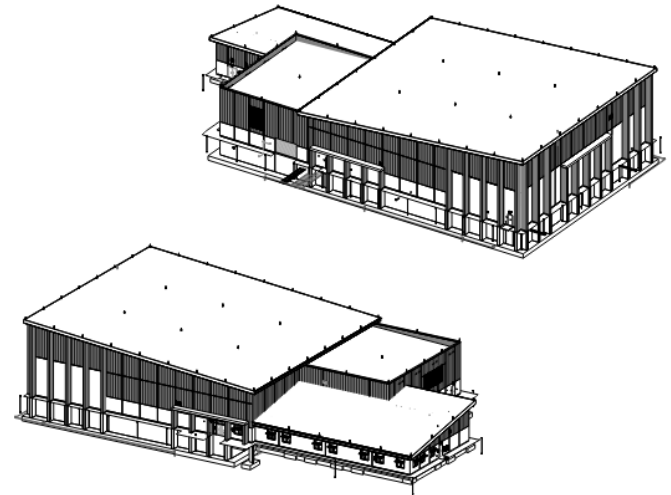
US Army Corps
of Engineers®



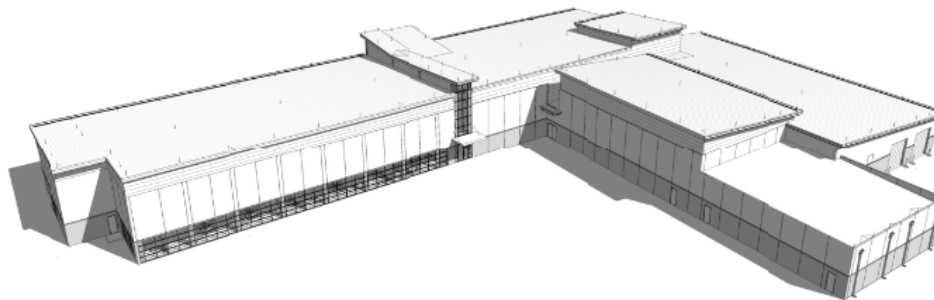
FUTURE WORK



Joint Cryptologic Center (JCC) Expansion - 65%
Buckley SFB



GBSD Integrated Command Center (ICC) - 65%
FE Warren AFB



GBSD Integrated Training Center (ITC) - 35%
FE Warren AFB



US Army Corps
of Engineers®



FUTURE WORK – BUCKLEY SFB

Project Name	Location	\$ Est. (mil)	Type	Type	FY
Cherry Creek Dam Work	Aurora, CO	<1	DBB	CIV	FY22
Work For Others (Security)	BSFB	30-40	DBB	ISS	FY24
Joint Cryptologic Center (JCC) Expansion	BSFB	15 - 25	DBB	MILCON	FY23
ERCIP PL-1 Non-Potable Water Well	BSFB	4	DBB	MILCON	FY24
ERCIP PL-1 Electrical Resiliency	BSFB	7	DBB	MILCON	FY24
St Vrain Creek	Longmont, CO	7	DBB	CIV	FY23
SIBRS HVAC/EMCS	BSFB	11	?	O&M	FY23
Base-wide Electrical Resiliency	BSFB	90	?	?	FY25
Base-wide Water Distr. Resiliency	BSFB	80	?	?	FY25
Next Gen MCS Project	BSFB	150	?	MILCON	FY26

ISS = Interagency Support Services

ERCIP = Energy Resilience & Conservation Investment Program

MILCON = Military Construction

WFO = Work For Other Districts

O&M = Operations and Maintenance

CIV = Civil Works



**US Army Corps
of Engineers®**



FUTURE WORK – FE WARREN AFB

Project Name	Location	\$ Est. (mil)	Type	Type	FY
Heli Ops, TRF, AMU, Alert Facility	FEW	125 - 135	DBB	MILCON	FY22
GBSD – Integrated Command Center	FEW	80 - 100	DBB	MILCON	FY23
GBSD – Missile Handling Complex	FEW	70 - 120	DBB	MILCON	FY23
GBSD – Security Forces Tactics Trainer	Guernsey	10 - 30	DBB	MILCON	FY24
GBSD – Integrated Training Center	FEW	40 - 80	DBB	MILCON	FY24
GBSD – Maintenance Training Facility	FEW	20 - 30	DBB	MILCON	FY24
GBSD – Consolidated Maintenance Facility	FEW	115 - 120	DBB	MILCON	FY25
GBSD – Vehicle Storage Facility	Guernsey	TBD	DBB	MILCON	FY25
GBSD – Operation Group Facility	FEW	TBD	DBB	?	FY27
Microgrid with Geothermal Generation	FEW	30 - 35	DBB	MILCON	FY24
Lander Floodwall	FEW	TBD	DBB	?	TBD

GBSD – Ground-Based Strategic Deterrent (Sentinel)



US Army Corps
of Engineers®



FRONT RANGE CONSTRUCTION CHALLENGES

- Construction market continues to be hot in the front range affecting material and labor availability for the management and trades
- COVID-19 has created escalation of price challenges for materials resulting in longer delivery times and cost increases that affect ongoing work and future awards
- COVID-19 has affected labor availability in unpredictable ways
- Non-local prime contractors have even more difficulty staffing key personnel and finding good, reliable subcontractors
- Mentoring and support for emerging small businesses
- Good contractors struggle with government procurement process, have difficulty “getting foot in the door”
- Balancing Quality, Safety, Schedule and delivering Full Scope



US Army Corps
of Engineers®



LESSONS LEARNED / SUGGESTIONS

- Embrace partnering from day zero as a fundamental tool supporting a successful project and revisit often
- Identify staff for the project that are great communicators
- Empower field staff to resolve issues and make decisions at the lowest level including those decisions with financial impacts
- Learn and understand USACE processes and our “front end” spec requirements
- Build a realistic schedule that fits the job and expect it to change
- Ensure USACE personnel conduct regular evaluations with the contractor throughout the project – use these as opportunities for honest professional back and forth discussions before formalizing



US Army Corps
of Engineers®



QUESTIONS?



US Army Corps
of Engineers®

