



# Society of American Military Engineers

January 23, 2020



# Sound Transit District

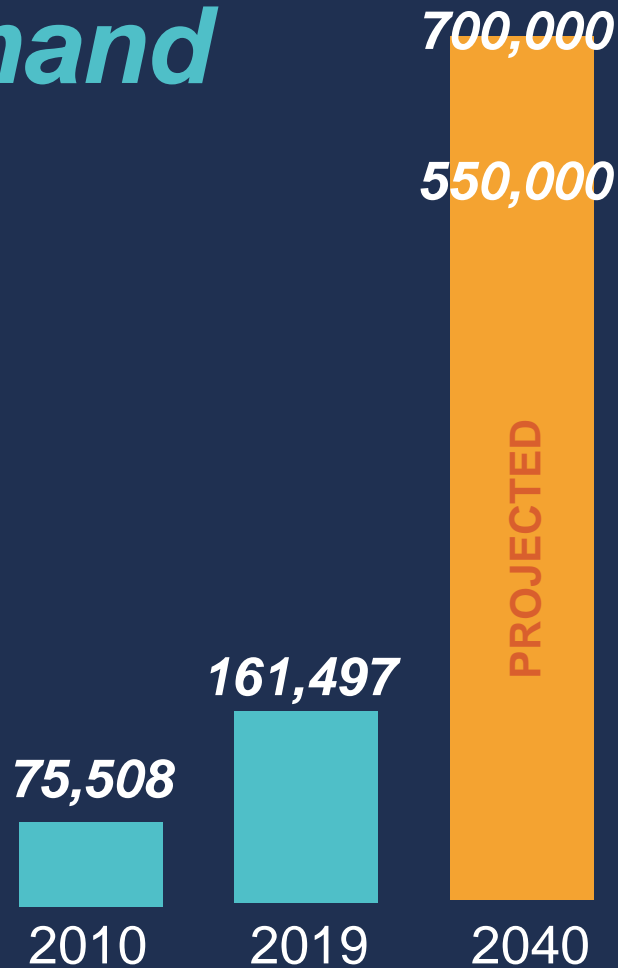


40% of  
the state's  
population



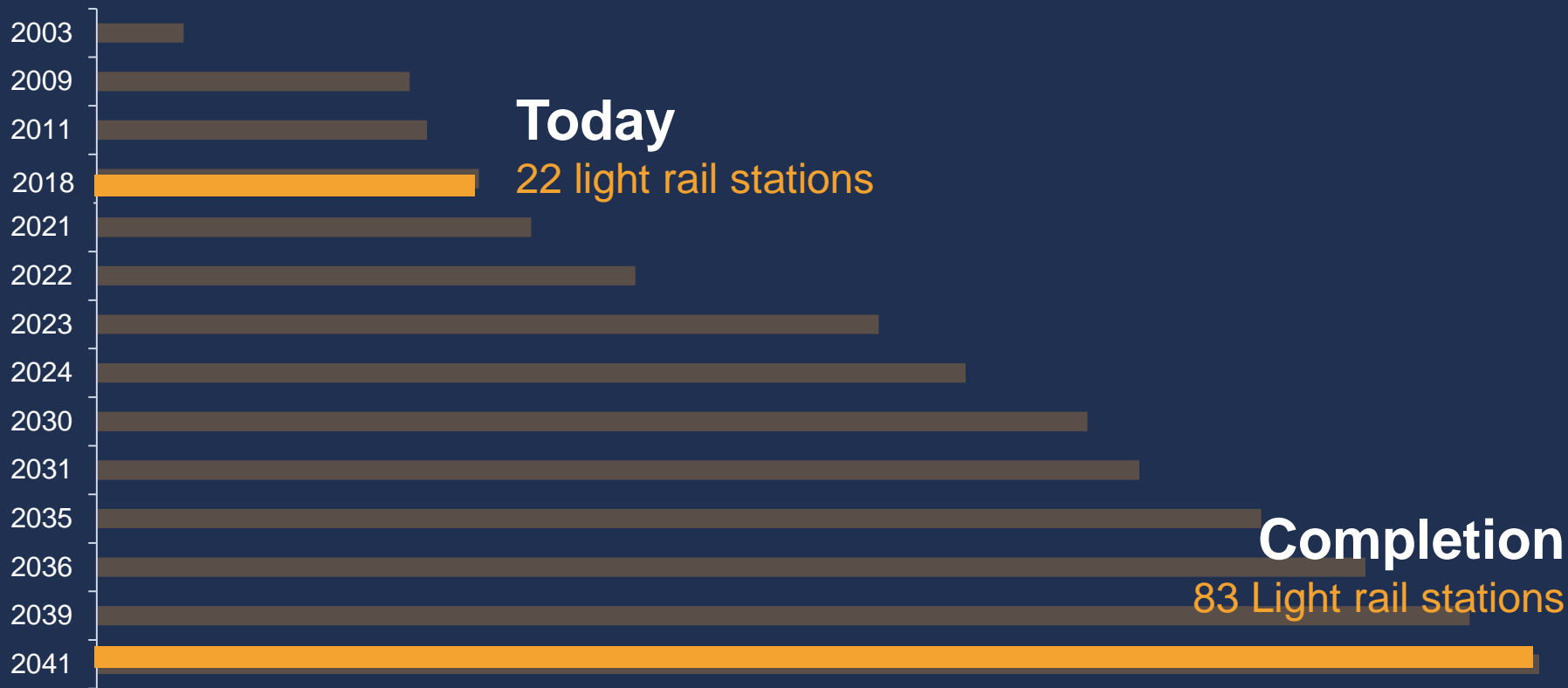
# Meeting growing demand

AVERAGE WEEKDAY RIDERSHIP





# Meeting growing demand





# *Creating jobs*

**370,000** direct and indirect jobs over a 25 year period.



# *Apprenticeship and skilled labor*

**Goal:** 20% of total construction hours worked to be apprenticeships



***What the future  
looks like***



# Today

## Light rail

- University of Washington, Capitol Hill, Downtown Seattle, Sea-Tac Airport, Angle Lake
- Tacoma Dome to Theater District

## Sounder rail

- Everett to Seattle
- Lakewood/Tacoma to Seattle

## ST Express bus

- 28 regional bus routes





# 2041

## Light rail – 5 lines

- Tacoma Dome to TCC (street car)
- Ballard to Tacoma Dome
- Kirkland to Issaquah
- West Seattle to Everett
- Mariner to Redmond

## Bus Rapid Transit (BRT)

- SR-522 – Shoreline to Bothell
- I-405 – Lynnwood to Burien

## Sounder Commuter Rail

- DuPont to Seattle
- Everett to Seattle



# Light Rail construction update

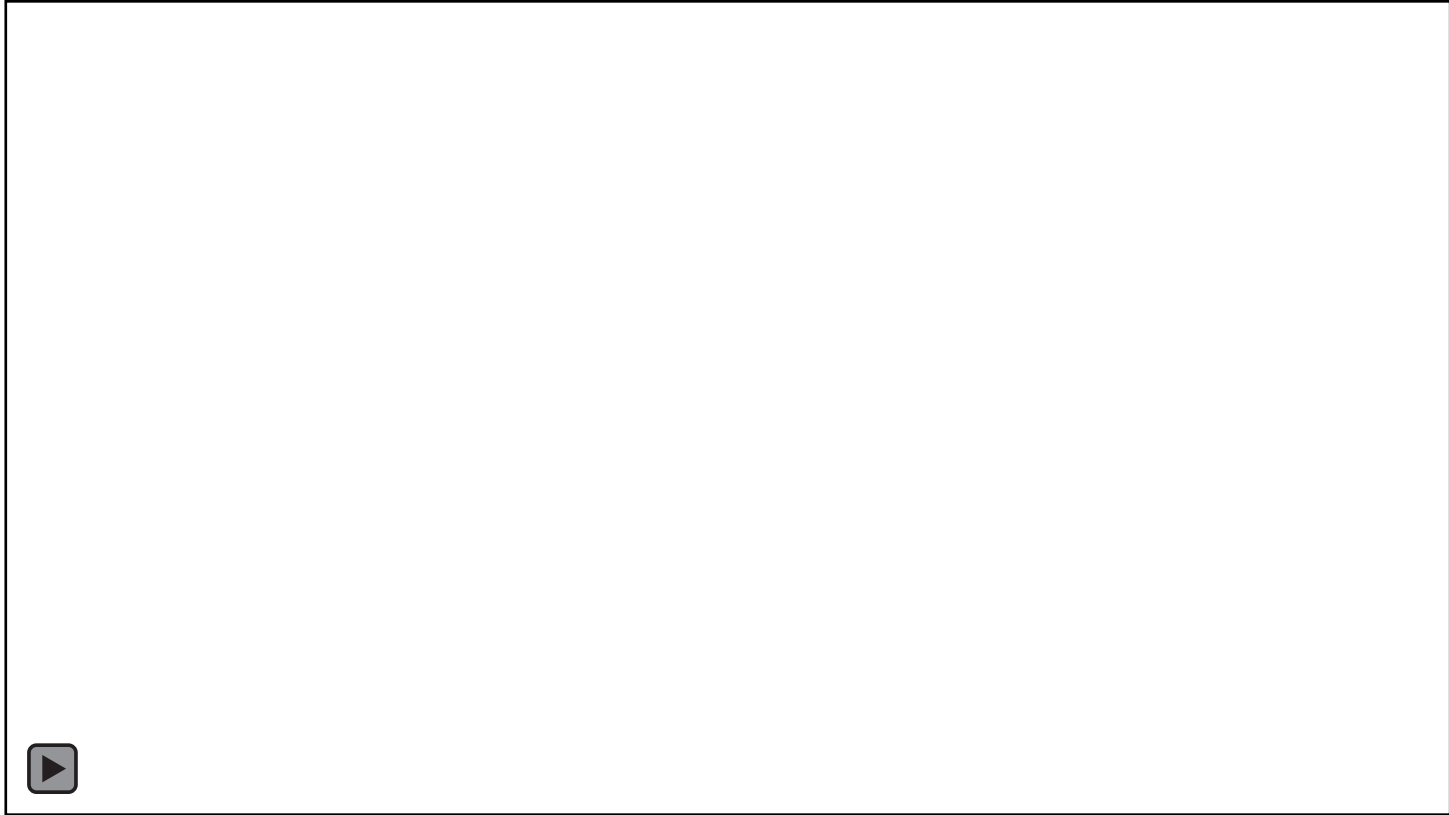
| KEY                                |  |
|------------------------------------|--|
| <b>ST3 PROJECTS</b>                |  |
|                                    | Link Light Rail  |
|                                    | Bus Rapid Transit  |
|                                    | Sounder Rail   |
|                                    | Proposed shoulder-running buses / speed and reliability improvements |
|                                    | Environmental Study  |
|                                    | Future investment study  |
| <b>CURRENT AND PLANNED SERVICE</b> |  |
|                                    | Link Light Rail  |
|                                    | Sounder  |
|                                    | ST Express Bus   |
| <b>STATIONS</b>                    |  |
|                                    | New Station  |
|                                    | New station / added parking  |
|                                    | Improved station   |
|                                    | Major Rail Transfer  |



- **OMF-East:** 96 vehicle facility – *opens 2020*
- **Northgate Link:** 4.3 miles; 3 new stations; 1 new parking garage – *opens 2021*
- **Hilltop Tacoma Link:** OMF expansion; 2.4 miles; 5 new stations; 1 relocated station – *opens 2022*
- **East Link:** 14 miles; 10 stations; 1 new parking garage – *opens 2023*



# *Getting ready to get you places*





# Light Rail construction update

- **Lynnwood Link:** 8.5 miles; 4 stations; 3 parking garages – *opens 2024*
- **Federal Way Link:** 7.8 miles; 3 new stations; 3 new parking garages – *opens 2024*
- **Downtown Redmond Link:** 3.4 miles; 2 stations; 1 new parking garage – *opens 2024*



*Coming Soon*

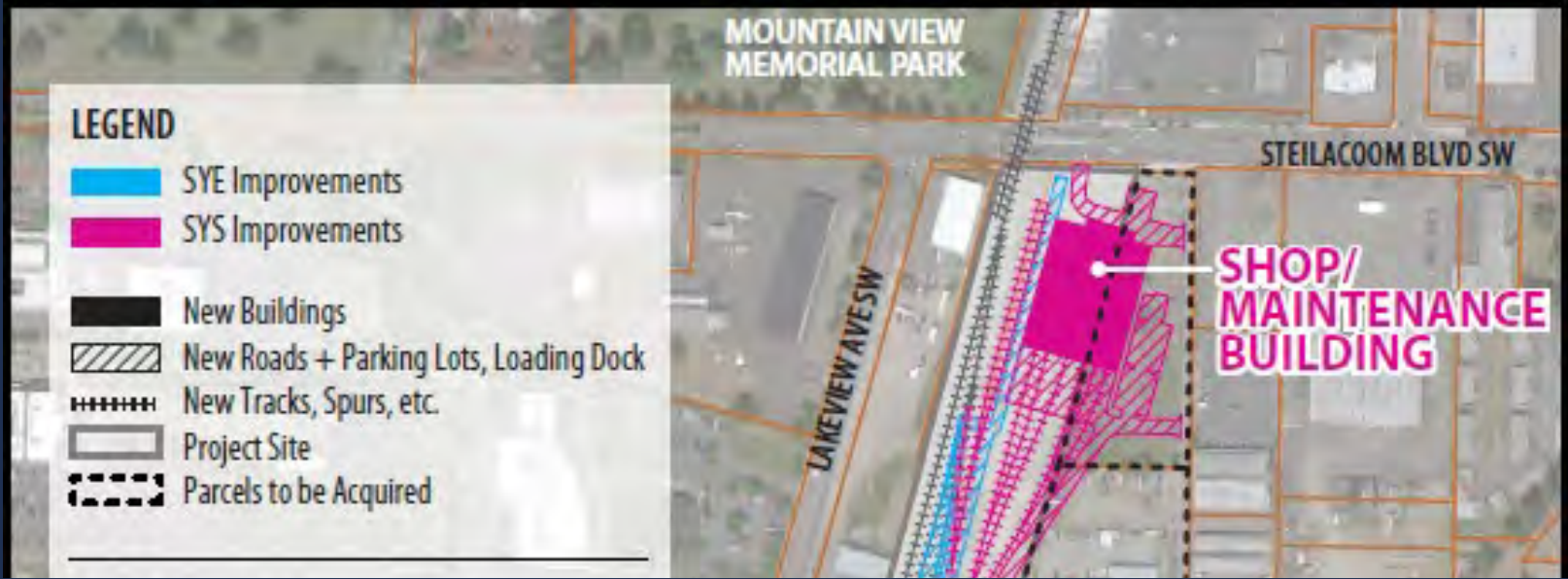
*New starts in 2020*



# Sounder

## Sounder (South) Parking and Access Improvements

- 4 Parking Garages
- DB (Puyallup) – Award January 2020
- DB RFQ (Sumner) – Feb 2020
- DB RFQ – Kent Q4, 2020
- DB RFQ – Auburn Q4, 2020



# Sounder

## *Sounder Maintenance Base*

- 40,000 sf Maint Fac + Track
- DBPM Awarded (OAC)
- DB RFQ – April 2020
- Design-Build RFP – July 2020
- Design-Build NTP – 1<sup>st</sup> Q 2021
- Approximate contract value: \$TBD

# STRIDE BRT:

## Connecting the region

### LINK connections

#### I-405 BRT

Redmond-Seattle-Lynnwood  
Lynnwood City Center & Bellevue Downtown

Issaquah-Bellevue-South Kirkland  
Bellevue Downtown

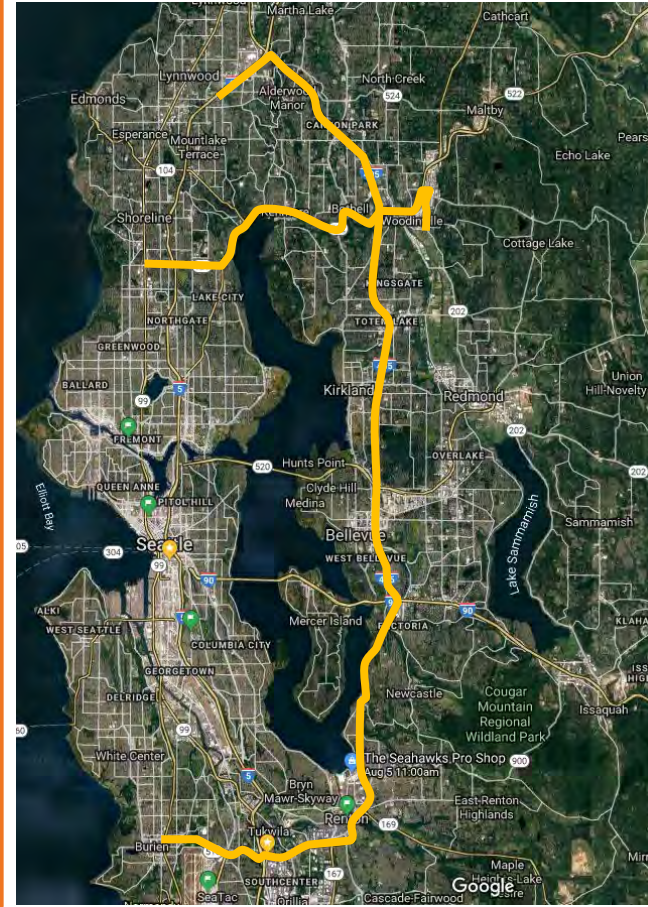
Everett-Seattle-West Seattle  
Lynnwood City Center

Ballard-Tacoma  
Tukwila International Boulevard Station

#### SR 522 BRT

Redmond-Seattle-Lynnwood  
Shoreline South/145th

Everett-Seattle-West Seattle  
Shoreline South/145th







PYLON WITH ILLUMINATED  
BRAND NAME, BRAND WAVE,  
AND BUS ICON

BRAND ON FACE OF CANOPY

STATION NAME SIGN

VMS

ART PANEL,  
ARTWORK TBD

FRAMED  
WINDSCREENS  
WITH COLORED  
METAL DIVIDERS



**STRIDE**

- Bus Maintenance Base
- New Transit Center (South Renton)
- 45 miles and 3 lines on SR 522 and I-405
- 23 BRT stations
- 6 Parking garages

# STRIDE: Project Delivery

## General Engineering Consultant

- Program management
- Design
- CM services
- Procurement documents
- Stations, Parking, Systems
- RFQ – 1<sup>st</sup> Qtr 2020
- Approximate value: \$85-\$100 M





## ***STRIDE: “Bus Base North”***

- ~ 66,000 sf Bus Maintenance Facility
- Supports 120 buses: parking, fuel/charging stations, maintenance, admin
- DBPM selection in process (SOQ's in review)
- DB RFQ – 3<sup>rd</sup> Qtr 2020



# *Planning*



# West Seattle Link Extension

- Opening 2030
- New stations at Delridge, Avalon and Alaska Junction; expanded stations at International District/Chinatown and SODO
- New rail-only fixed span crossing of the Duwamish River
- Length: 4.7 miles
- Status: Planning

**Link Light Rail**

**West Seattle extension**

- Elevated
- Surface

**Current/future service**

- To Ballard (2035)
- To Everett (2036)
- To Tacoma Dome (2030)
- To Lynnwood/Redmond (2024)

○ Station area

∞ Major transfer hub



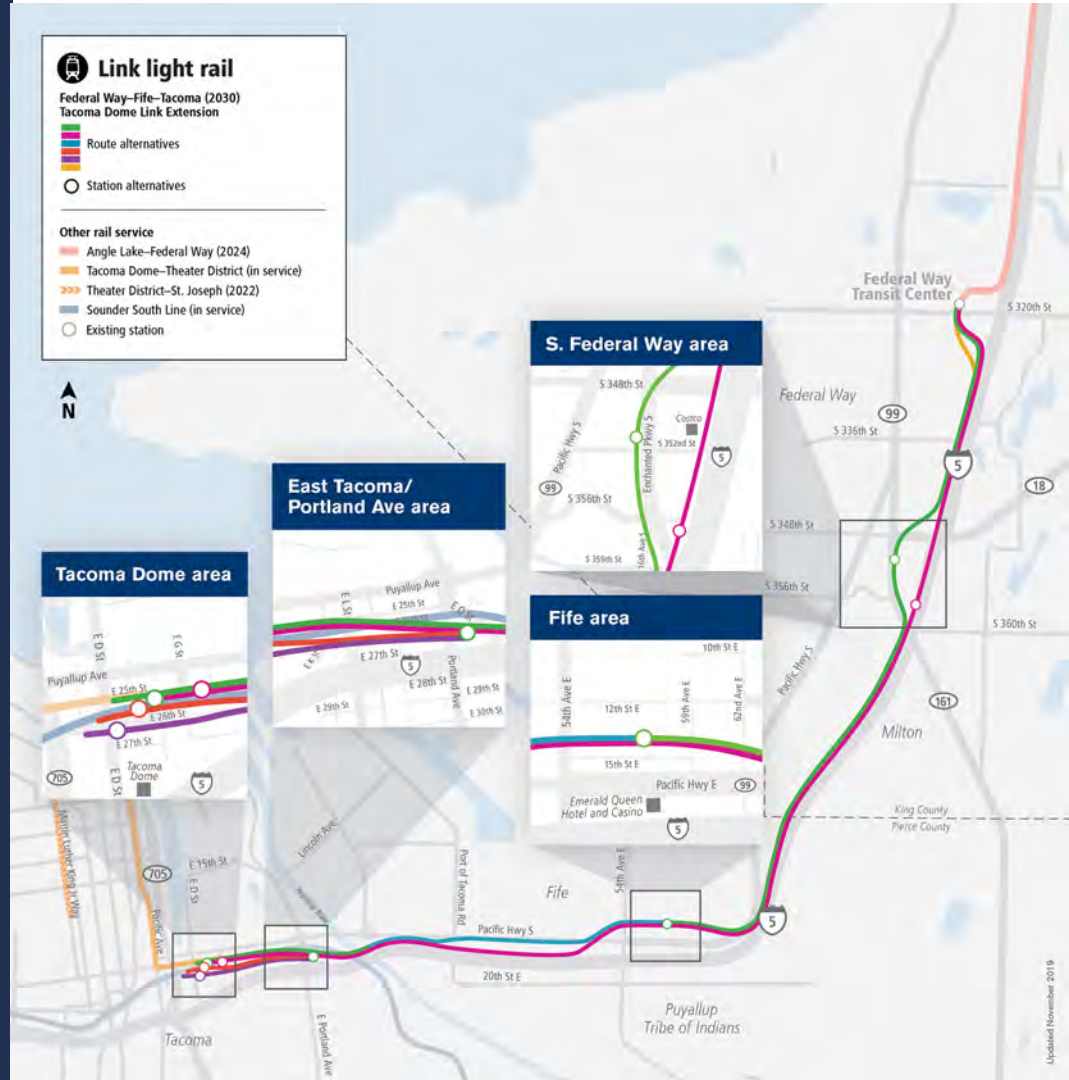


# Ballard Link Extension

- Opening 2035
- Length: 5.4 miles
- Four tunnel stations: Denny, Westlake, Midtown, International District/ Chinatown
- Three elevated stations: Ballard, Interbay, Smith Cove
- New rail-only movable bridge over Salmon Bay
- Status: Planning

# Tacoma Dome Link Extension

- Opens 2030
- Length: 10 miles
- Four stations: S. Federal Way, Fife, E. Tacoma, Tacoma Dome
- Two new parking garages
- Operations and Maintenance Facility
- Status: Planning





## Link Light Rail

West Seattle–Seattle–Everett (2036)

- Surface
- Elevated

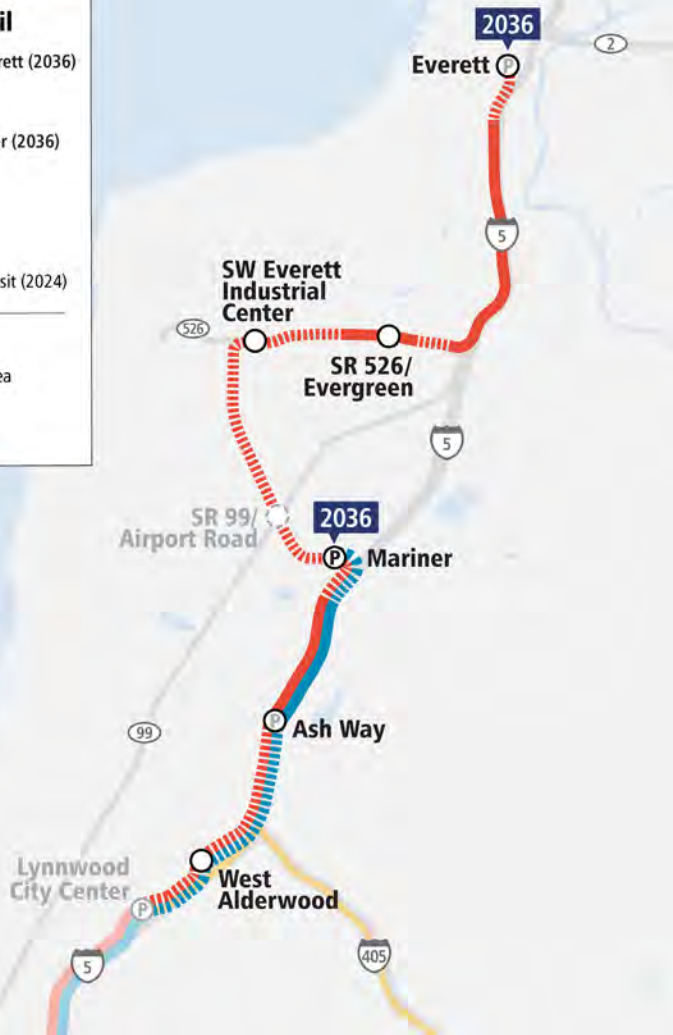
Redmond–Seattle–Mariner (2036)

- Surface
- Elevated

Other service

- Link in service
- I-405 Bus Rapid Transit (2024)

- New station area
- Provisional station area
- New parking
- Existing parking

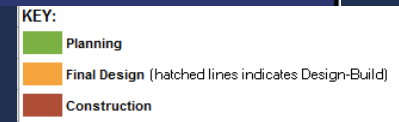
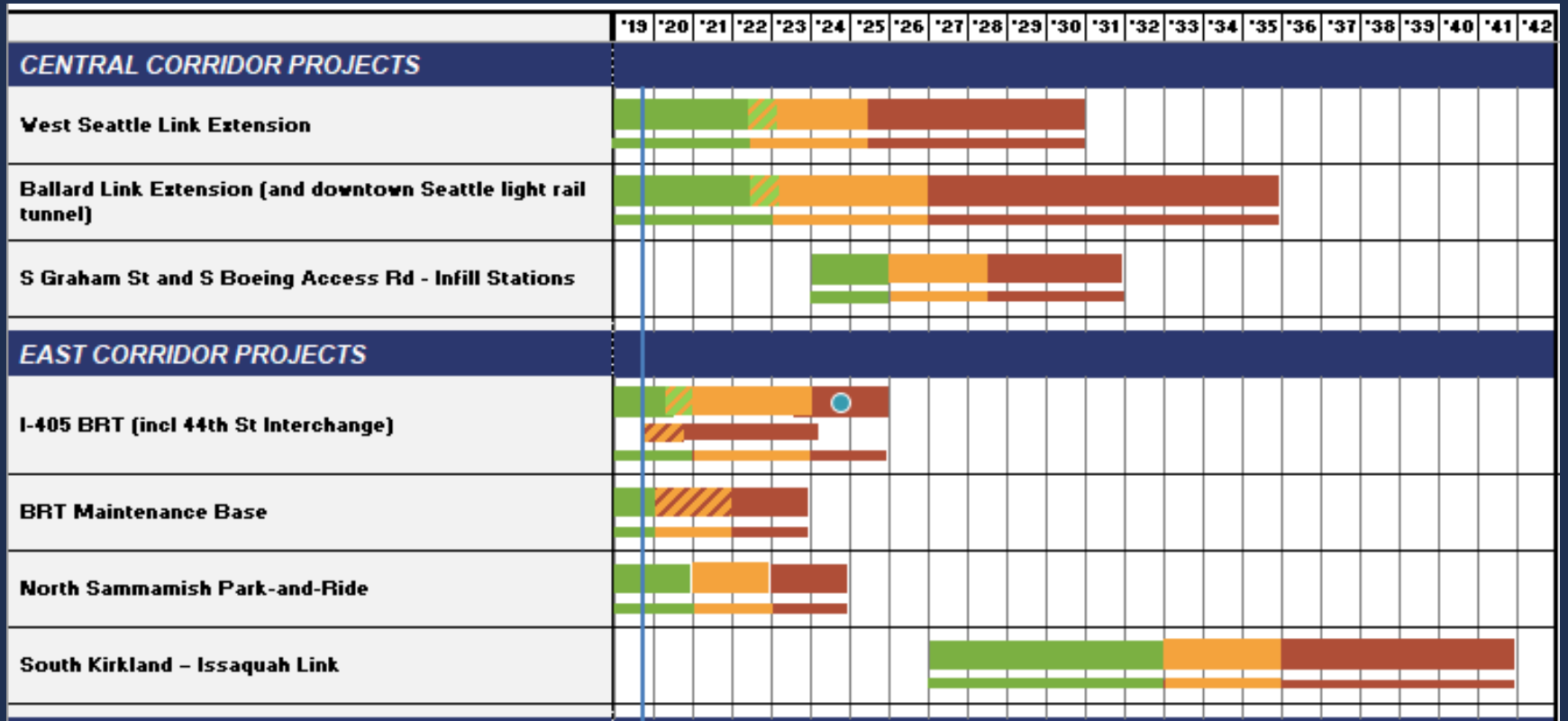


# Everett Link Extension

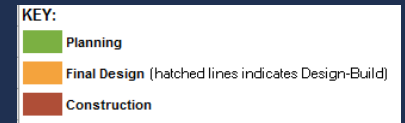
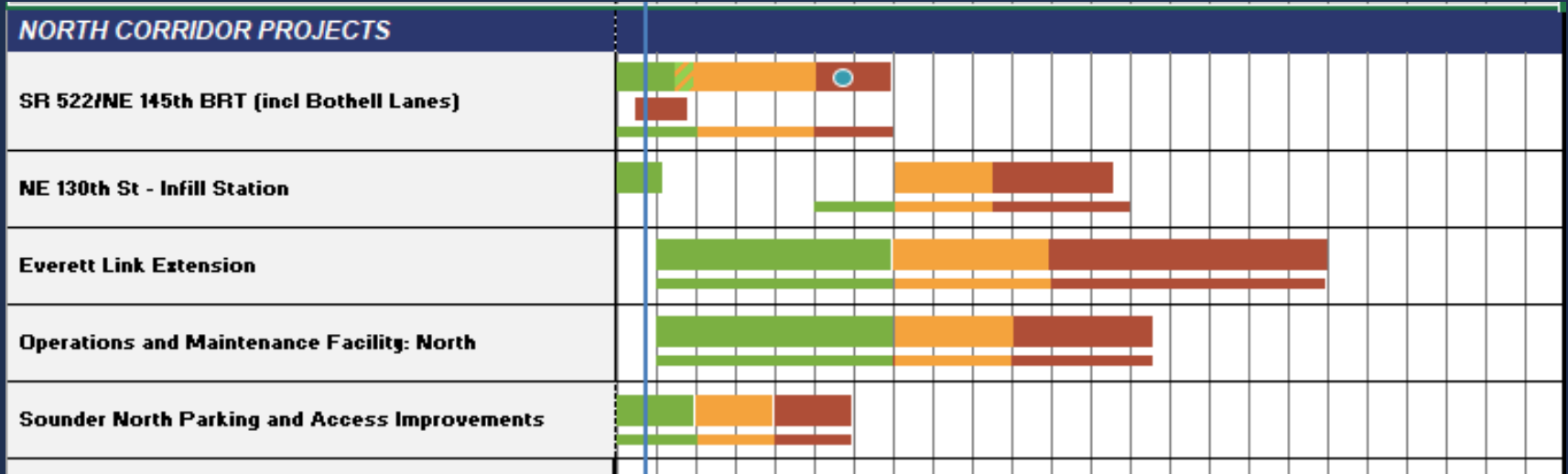
- Opening 2036
- Length: 16.3 miles
- Six stations (potential for seventh)
- One new parking garage
- Operations and Maintenance Facility
- Status: Planning RFQ on the street



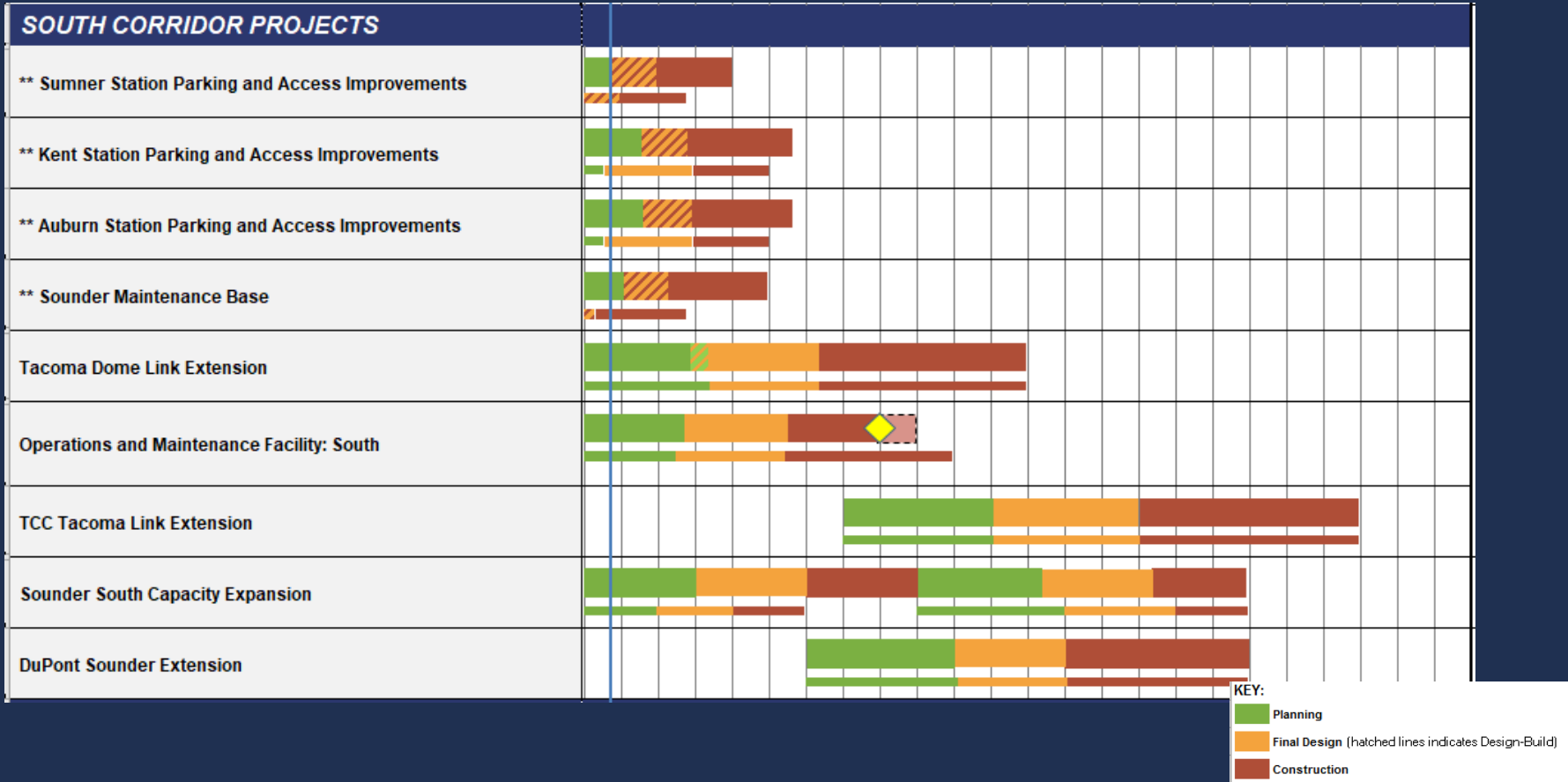
# ST3 Project Timelines



# ST3 Project Timelines



# ST3 Project Timelines



# Doing Business with Sound Transit

- Procurement & Contracts
  - Vendors and contractors who want to do business with Sound Transit must register with Biddingo, our online bidding service
  - Visit Website for more info: <http://www.soundtransit.org/procurement>
- Office of Small Business Development and Labor Compliance
  - Works to ensure the businesses and workforce building our regional transit represent the demographics of our region
  - Visit Website for more info: <http://www.soundtransit.org/About-Sound-Transit/Doing-business-with-us/office-small-business-development-and-labor-compliance>

[soundtransit.org/system](https://soundtransit.org/system) 





# 2039

## Light rail

- Tacoma Link Extension to Tacoma Community College



# 2036

## Light rail

- Everett, SR 526/Evergreen, SW Everett Industrial Center, Mariner, Ash Way, West Alderwood

## Sounder rail

- DuPont and Tillicum
- Sounder south capacity and access improvements completed



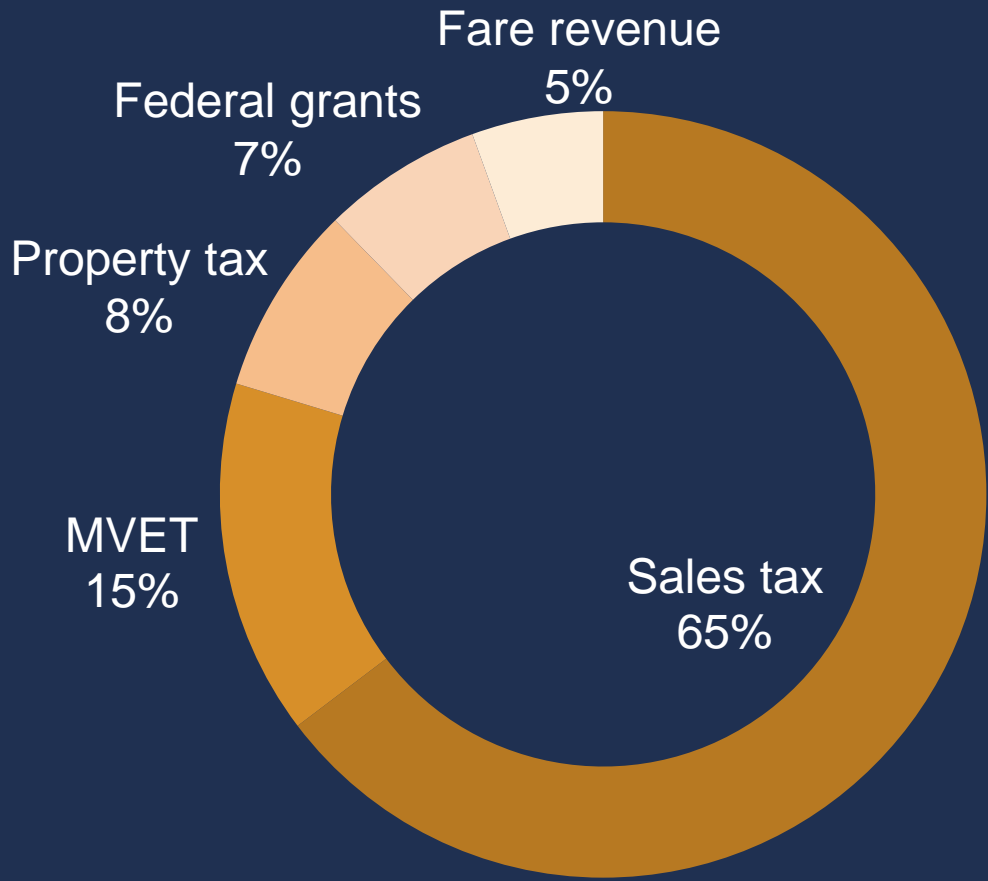
# *New downtown light rail tunnel*

- Opening 2035
- Length: 1.7 miles
- Four tunnel stations: Denny, Westlake, Midtown, International District/ Chinatown





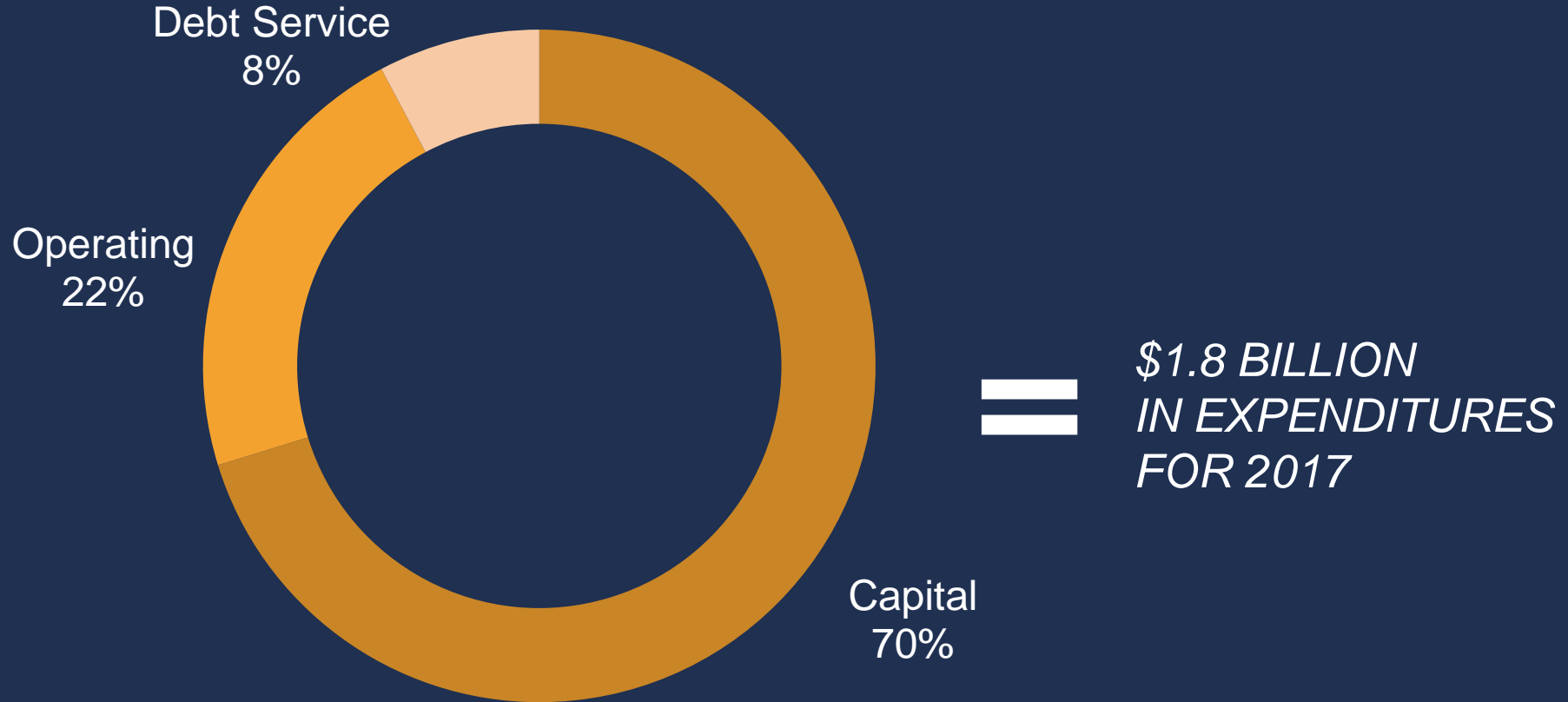
# Where the money comes from



*\$1.6 BILLION  
IN REVENUES  
FOR 2017*



# Where the money goes





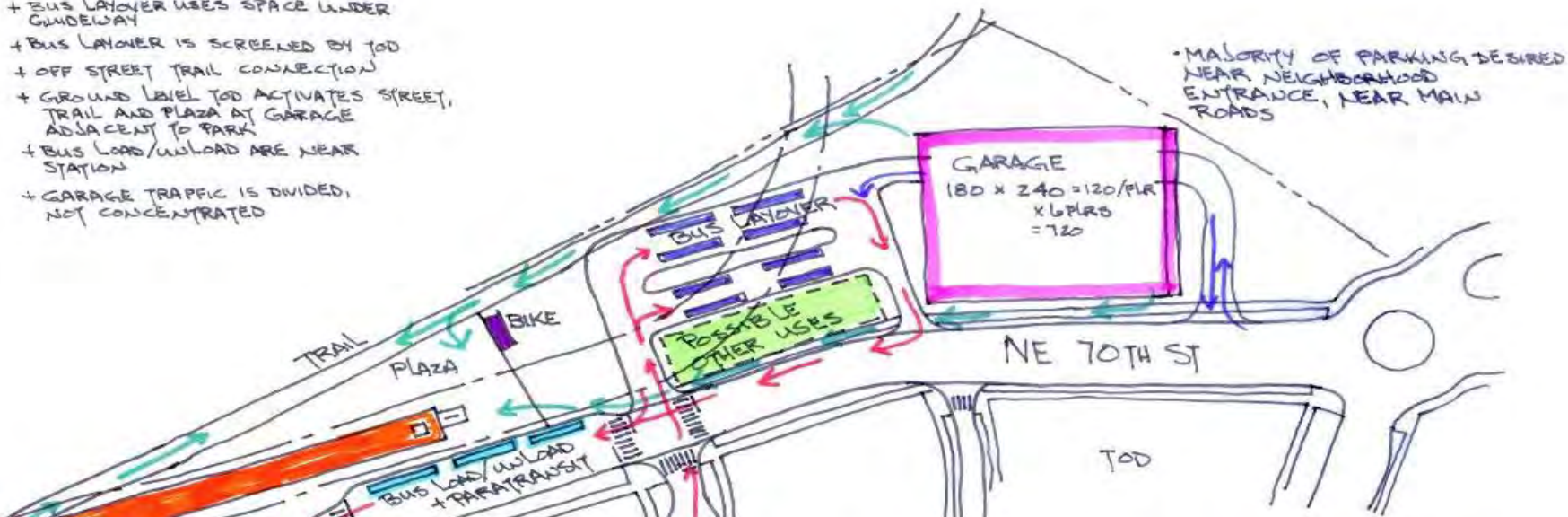
# Light Rail

## *Federal Way Link Extension*

- Design-Build
- 7.8 miles; 3 stations; 3 parking garages
- RFP issued September, 2018
- Proposals due: March 2019
- NTP anticipated: August, 2019
- Approximate contract value: \$1.5 B



- + BUS LAYOVER USES SPACE UNDER GUIDEWAY
- + BUS LAYOVER IS SCREENED BY TOD
- + OFF STREET TRAIL CONNECTION
- + GROUND LEVEL TOD ACTIVATES STREET, TRAIL AND PLAZA AT GARAGE ADJACENT TO PARK
- + BUS LOAD/UNLOAD ARE NEAR STATION
- + GARAGE TRAFFIC IS DIVIDED, NOT CONCENTRATED



# Light Rail

## Downtown Redmond Link Extension

- Design-Build
- 3.4 miles; 2 stations; parking garage
- RFP issued November 2018
- Design-Build NTP – 3<sup>rd</sup> Q 2019
- Approximate contract value: \$850M