

Business Type & Size

- **Tribal One**, LLCs formed under the laws of the Coquille Indian Tribe, are Tribally-Owned SBA certified 8(a) Business Development Program Participants. Established in 2002. Federal/DOD since 2013.
 - **Tribal One Broadband Tech 8(a) Certification Date – 04/05/2013**
 - CAGE Code: 5WZW8 DUNS Code: 11-115-8726
 - **Tribal 1 Construction, LLC 8(a) Certification Date – 3/19/2018**
 - CAGE Code: 7QZJ2 DUNS Code: 08-030-2043
- **DD 254 Approved**
- **Bonding \$50MM Aggregate - \$30MM Single Project**
- **Integrity First, Mission Driven, Quality Focused, Safety Always**



TRIBAL1

Tribal One At a Glance

- Multi-disciplined & mission focused
 - General Contracting
 - Telecommunications Infrastructure Design & Construction
 - Integrated Control Systems with Cyber Solutions
 - Inside/Outside Plant Structured Fiber Optic Cabling
 - SCIF/Datacenter Renovations
 - Network Operations Center Operations
 - Airfield Pavement and Lighting
 - Historic Restoration/Renovation (TI, FSRM)
 - Emergency Response/Geohazard Mitigation



Satisfied Clients



TRIBAL1

Summary of Highlighted Projects

- **Highlighted Success Stories**

- **USACE Omaha District**

- \$14.6MM Alpha Ramp Pavement Replacement – **In Progress**
 - \$1.58MM Repair Bldg 1 Battle Cab converted to a SCIF. Completed 02/20

- **USACE Los Angeles District**

- \$5.1MM Plant 42 Airfield Lightning Upgrade - Completed 11/19
 - \$22 MM Emergency Debris Basin Clean-up - Completed 2/18

- **USACE Portland District**

- > \$1MM in Cable Plant Upgrades, DAS, AV and IT Projects – **In Progress**
 - \$1.3MM Western Processing Center for ACE-IT relocated. Completed 3/15

- **IDIQs: GSA R8 Small Project, NPS IMR, Front Range Paving, ICS**

- > \$1MM Various Front Range Paving projects. **In Progress**
 - \$13.3MM Byron White Courthouse Historic Restoration. Completed 8/17
 - \$2.42MM GSA Sewer Cross Connection Improvements. Completed 6/17
 - \$1.26MM Bryon Rodgers Vehicular Ramp Remodel. Completed 8/16
 - \$1.36MM Deadman's Bar Road Parking and Ramp. Completed 8/16
 - \$22.0MM Integrated Control Systems SATOC 21st CES **In Progress**



TRIBAL1

Tribal One Team

Erik Sell PE, Lt. Col (ret) USAF
Construction Executive
850.625.0449
eriksell@tribal.one

Dr Doug Wells, Lt. Col (ret) USAF
Business Development Executive
719.352.6409
dougwells@tribal.one

Tribal One

Oregon HQ:

3201 Tremont Ave, North Bend, OR 97459 541.756.0662

Colorado:

7310 S. Alton Way, Unit 6E, Centennial CO 80112 888.672.0211

118 N Tejon Street, #404 Colorado Springs, CO 80903 719.352.6409



TRIBAL1

Hurricane Dorian

Recovery

Abaco Bahamas

Man-O-War Cay





An aerial photograph of a long, narrow island with a green interior and a white sandy beach. The island is surrounded by clear, shallow turquoise water, with a small lagoon on the left side. The text 'Man-O-War' is overlaid in the top right corner.

Man-O-War

MOW

- 6 Sq Miles
- 200 home
- Est 1870 - Albury, Sweeny,
- Very religious 3 churchs
- Center of business

SAME Connection

MISSION:

..... solutions to **national security infrastructure challenges**.....

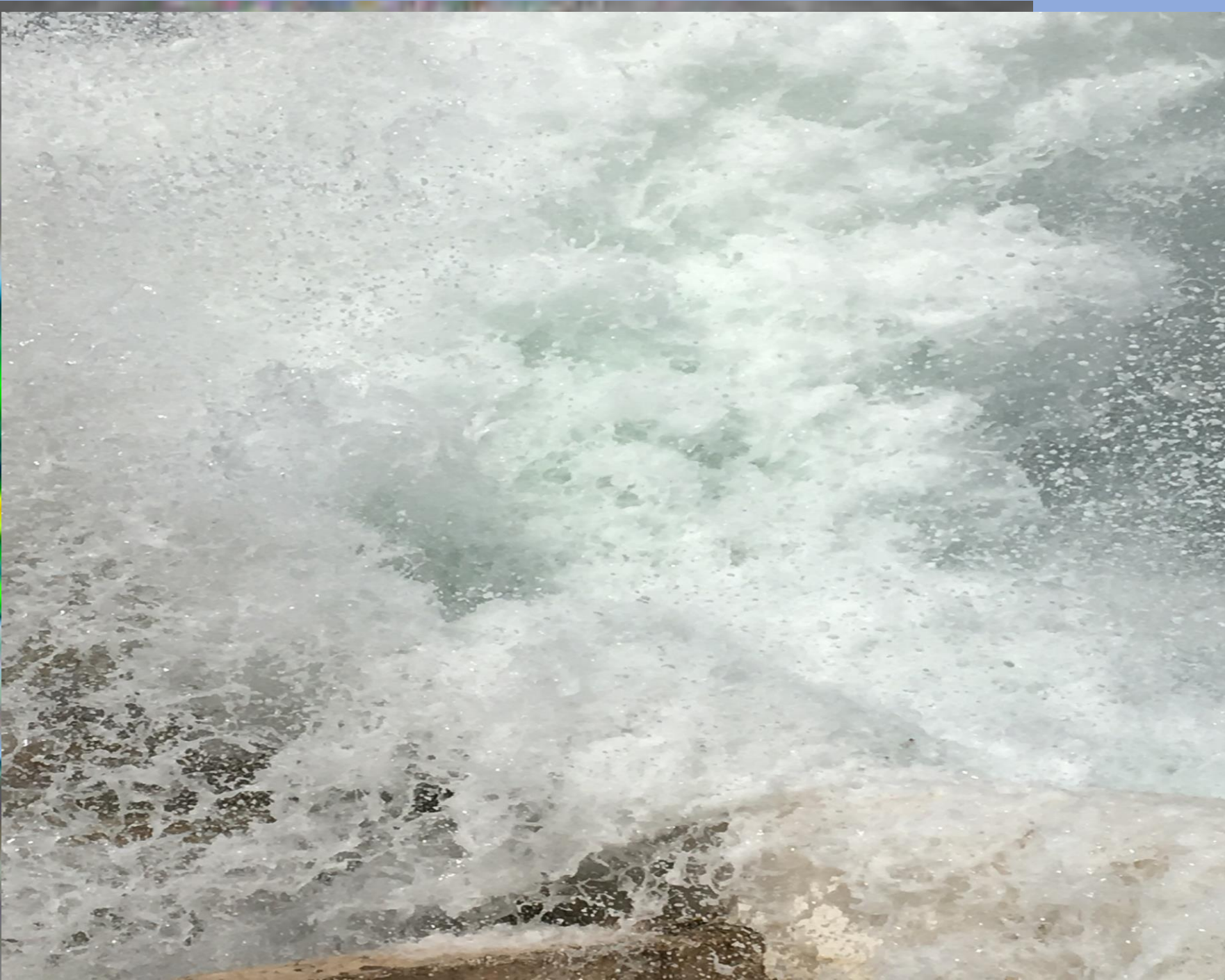
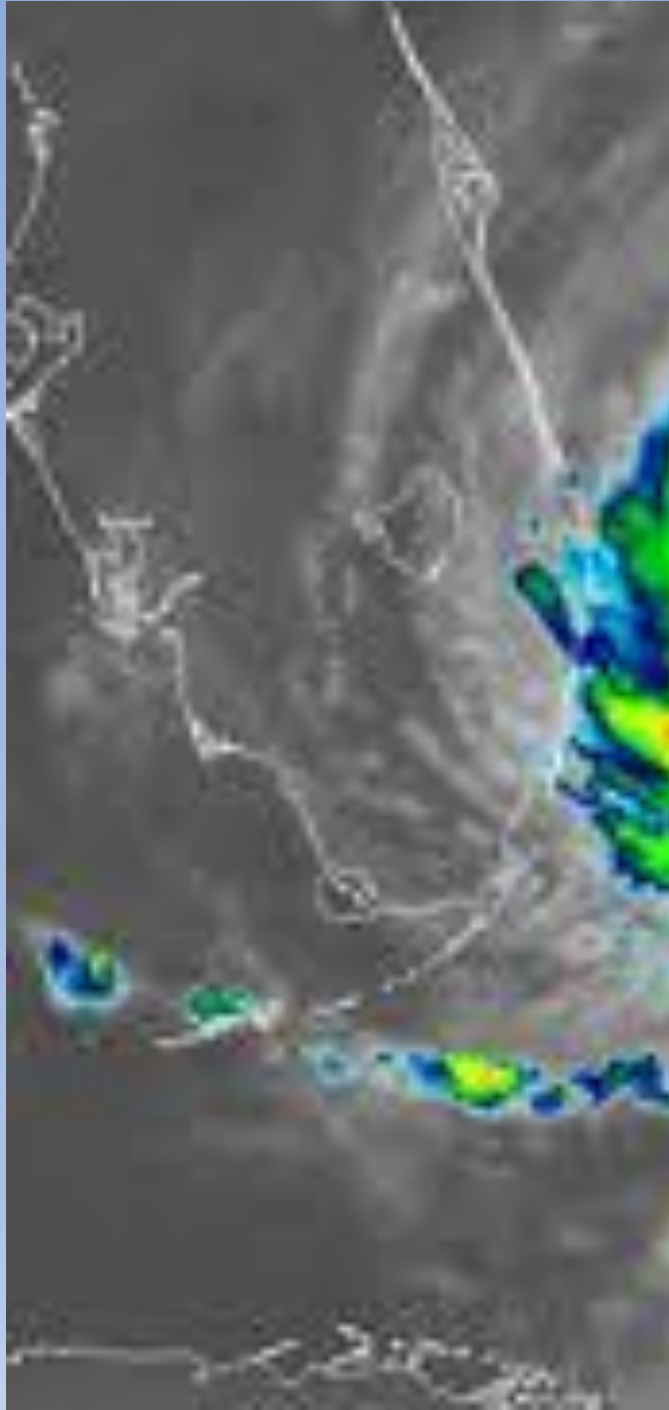




Dorian

- 1 Sep 2019
- Cat 5 hurricane
- Strongest on Record
- Moving SLOOW, 1 mph
> 24 hrs
- 185MPH winds
- Many Tornados
- Surge over 8'





HURRICANE DORIAN

LOCATED: 65 MI N OF FREEPORT GRAND BAHAMA ISLAND

CATEGORY: **2**
WINDS: 110 mph



The Job

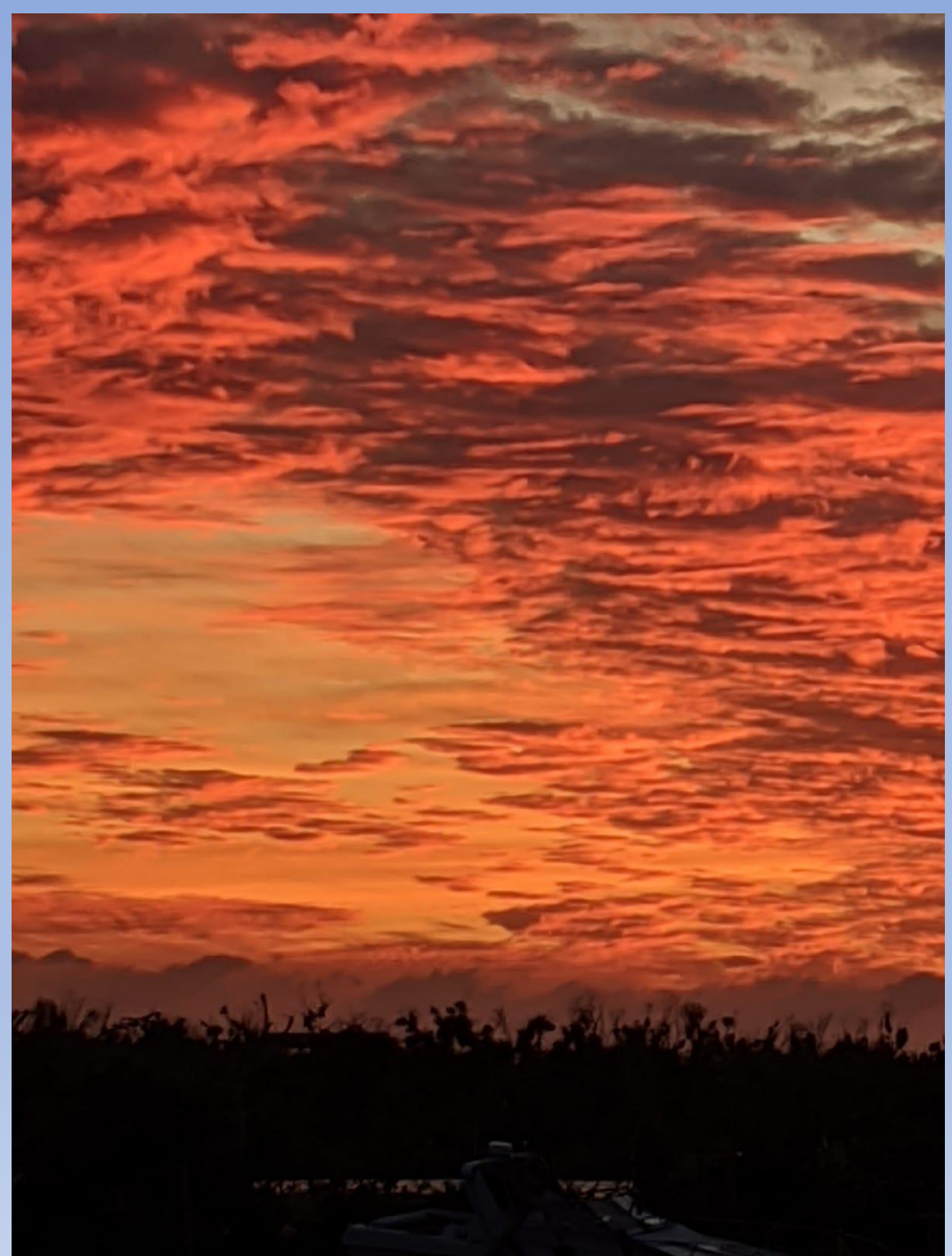
- PM for Recovery
- Guide GZC
- Develop the Plan & Execute
- Establish priorities
- Partner with NGO,
churches, others
- Find donors
- Recruit and lead Vols
- more

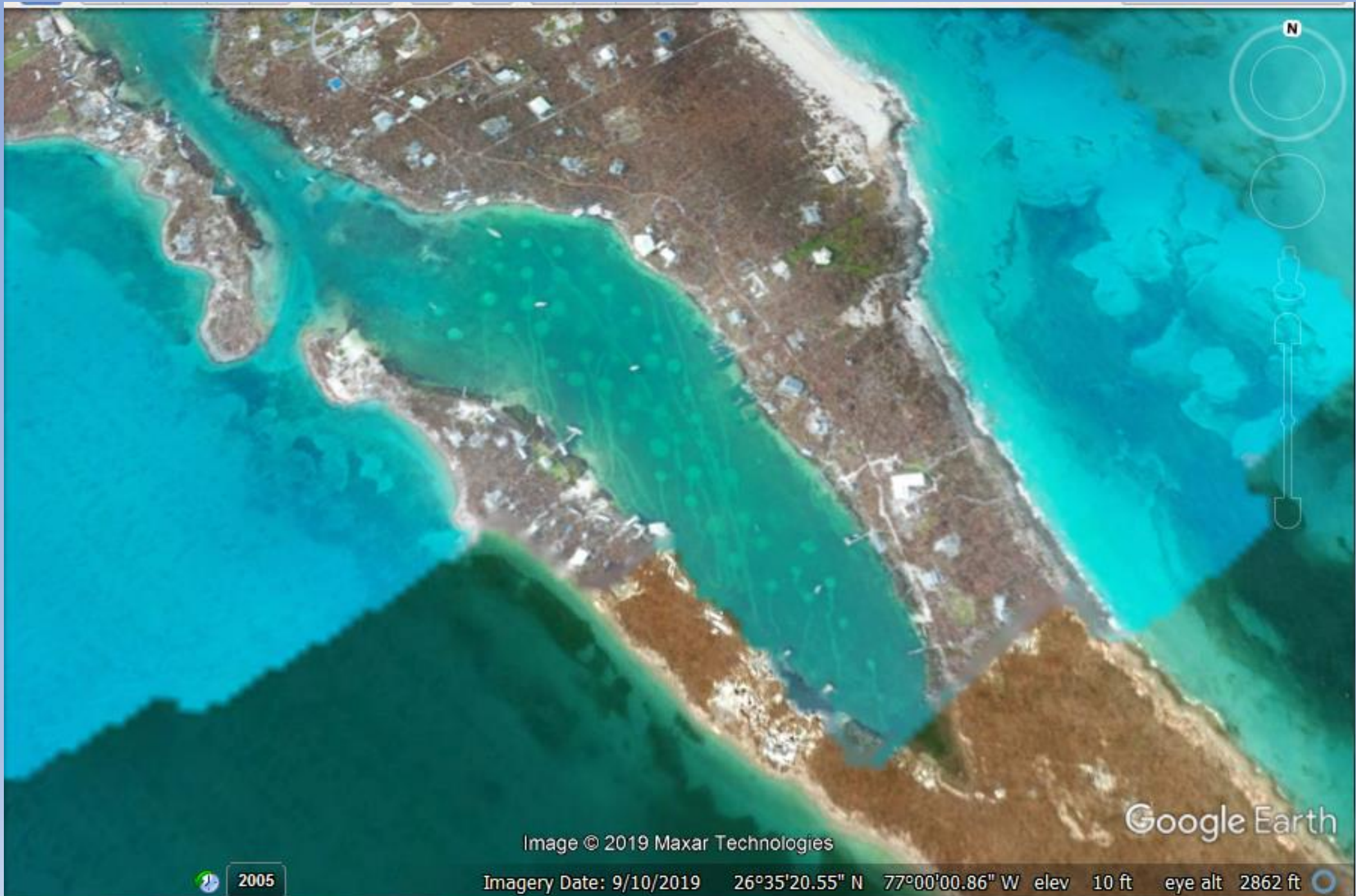


Priorities

- Homes
- Clean – Muckout
- Debris
- Food /Water / Fuel
- Medical
- Log
- Power
- Water Front
- Restore businesses

Build Back Better





Google Earth

Image © 2019 Maxar Technologies

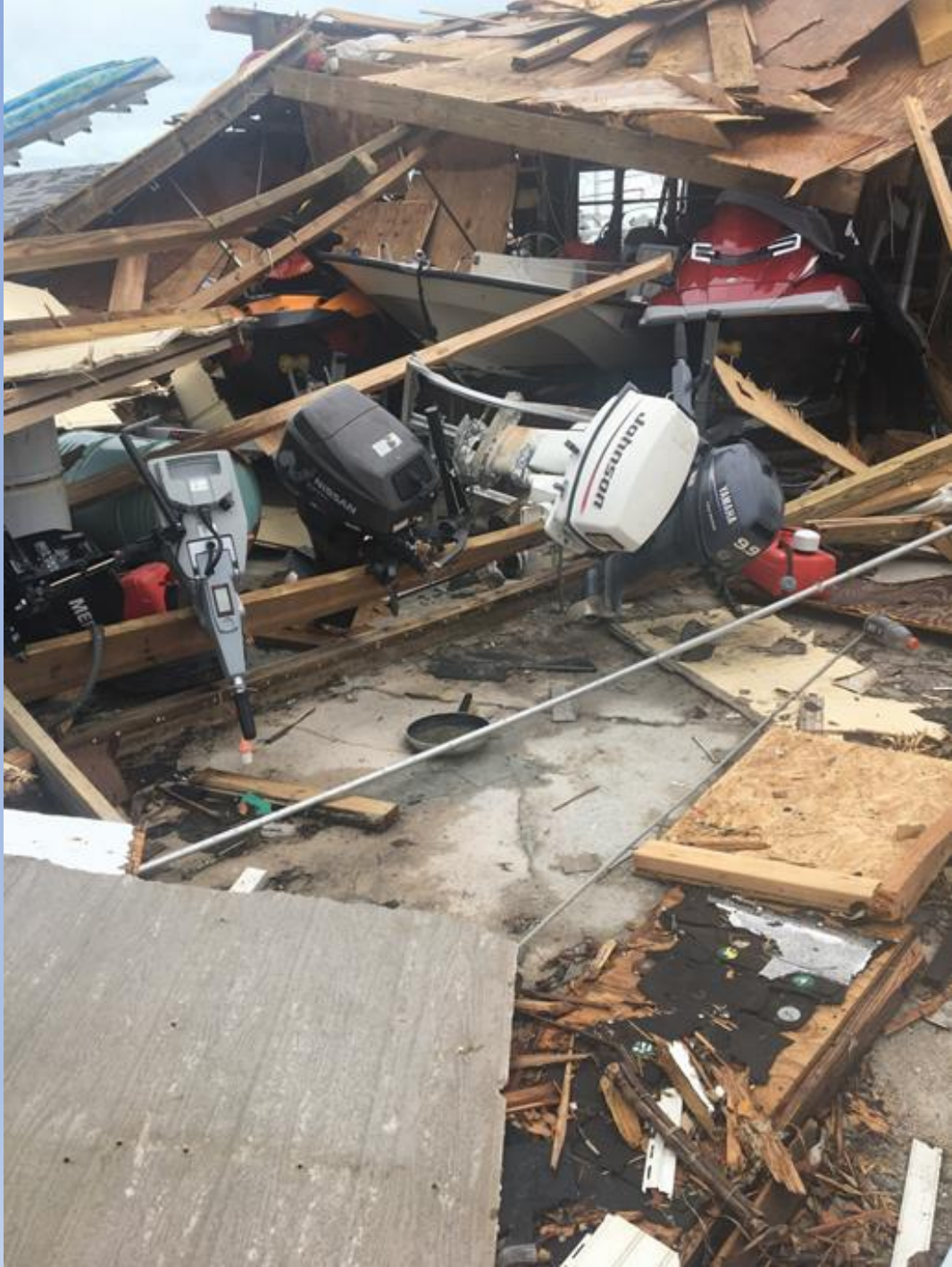
2005

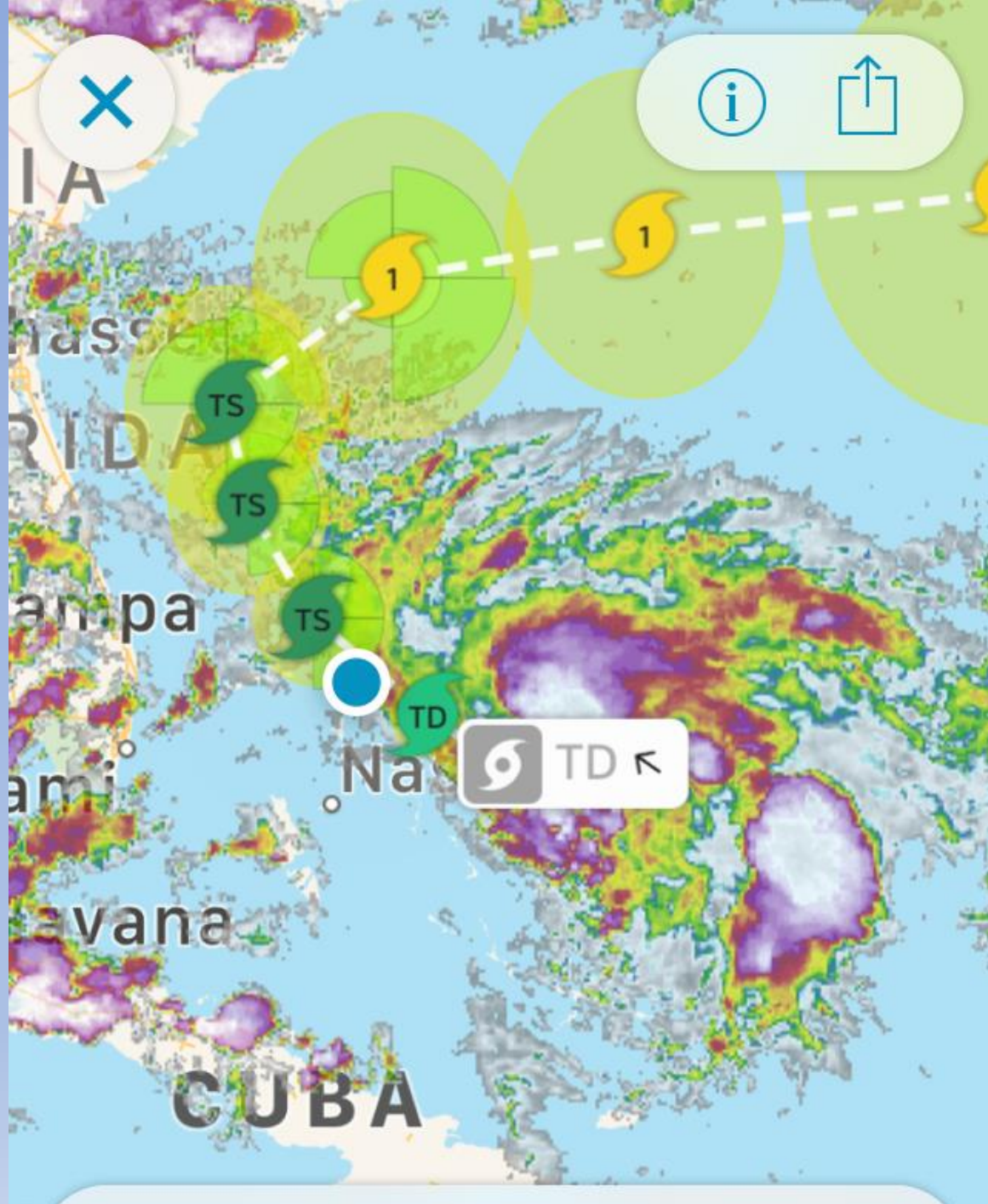
Imagery Date: 9/10/2019 26°35'20.55" N 77°00'00.86" W elev 10 ft eye alt 2862 ft























An aerial photograph of a coastal town, likely in a tropical region. The town is densely packed with buildings, many of which have brightly colored roofs in shades of blue, green, yellow, and red. The town is situated on a peninsula or a narrow strip of land, with a sandy beach and turquoise water on one side. A large body of water, possibly a harbor or a bay, is visible in the foreground, with numerous small boats and larger vessels anchored. The water is a deep green color. The town is surrounded by lush green vegetation. The photograph is taken from a high angle, providing a clear view of the town's layout and the surrounding environment. The image is a printout of a photograph, with a white border around the edges.

360 Home/ Bldgs
30+ Green
200+ Blue Roofs
70 Yellow / Red – Demo/

DONATIONS


- 3 Major Barges
- WH in FL
- Daily Flights
- Pampers to Dog Food –
- Tools, Gensets
- Bldg Material

2.0Ah Lithium Combo Kit
by DeWALT
★★★★★ 3 reviews

\$529.00
As low as \$50/mo w/

Quantity 1 ▼

In Stock



COMMS

- IDEA – SAT Com
- BTC



FOOD

- “Helicopter Food” –
World Kitchen
- Hibiscus Café
- Citizen Prepare
- ----- FREE -----







Missionary Flight International – MFI

VOLUNTEERS



Samaritans Purse

CAM — Christian Assist Ministry

Many Churches — CA to FL

IDEA

LIFT

Water Mission

AmericaCare

.....



























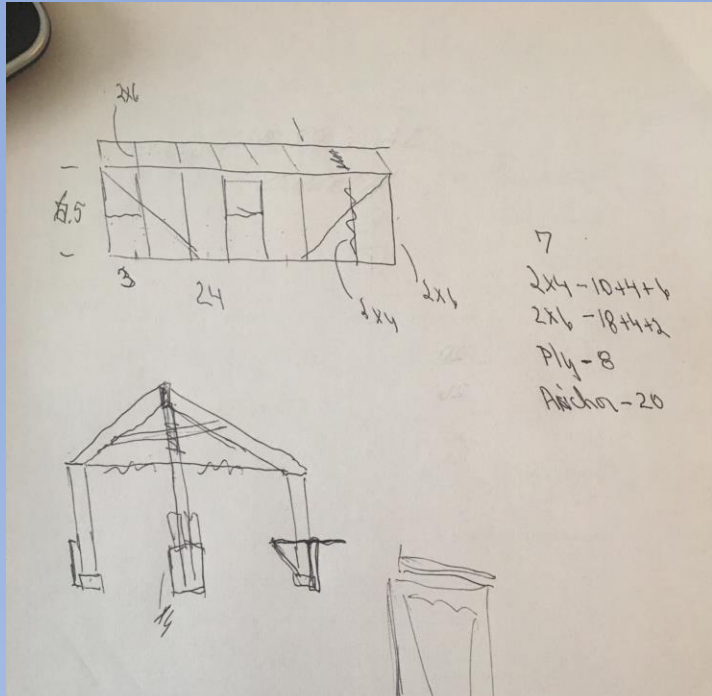
















RECAP

- Covered/ Dried 200 homes
- Mucked 100 home
- Demo 70 facilities
- Debris 50K CY ++
- Volunteers over 1200
- Power only now returning 10 mths!!