



Stantec's US Federal Services Programs

SAME Seattle Post
Small Business Symposium

April 18-19, 2022



Stantec At-A-Glance

1954

Stantec
founded

\$4.8 billion

Market
Cap (\$USD)

24,500

Employees
globally

STN

Traded on
NYSE & TSX

6

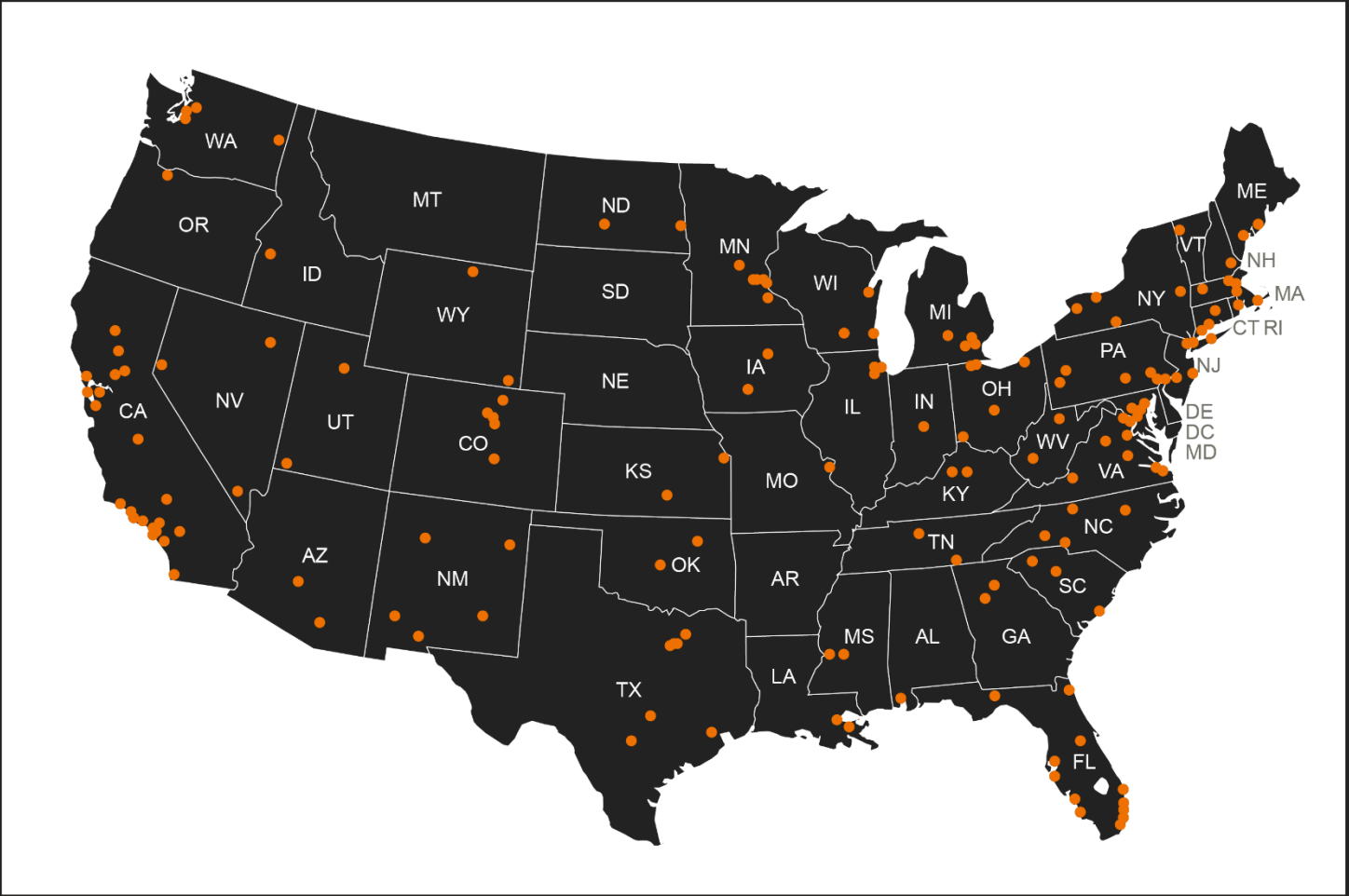
Continents
we operate in

350

Locations
worldwide



Where We Are





How We Rank

4

Top 100 Pure Designers
(ENR, April 2021)

1

Top 10 Architecture/Design Firms – Total Billings
(CC&R, Feb 2021)

1

Top 10 Engineering Firms - Federal
(CC&R, April 2021)

8

Top 15 Design Firms Marine and Port Facilities
(ENR, July 2021)

1

Top 100 Global Most Sustainable Corporations in North America
(Corporate Knights, Jan 2021)

8

Top 200 Environmental Firms
(ENR, July 2020)



Stantec's Business Lines



Infrastructure

- Federal
- Bridges
- Community Development
- Roadways
- Transit & Rail
- Water



Buildings

- Federal
- Airports & Aviation
- Civic
- Commercial
- Education
- Healthcare
- Industrial Buildings
- Science & Technology



Environmental

- Federal
- Buildings
- Community Development
- Mining
- Oil & Gas
- Power
- Transportation
- Water



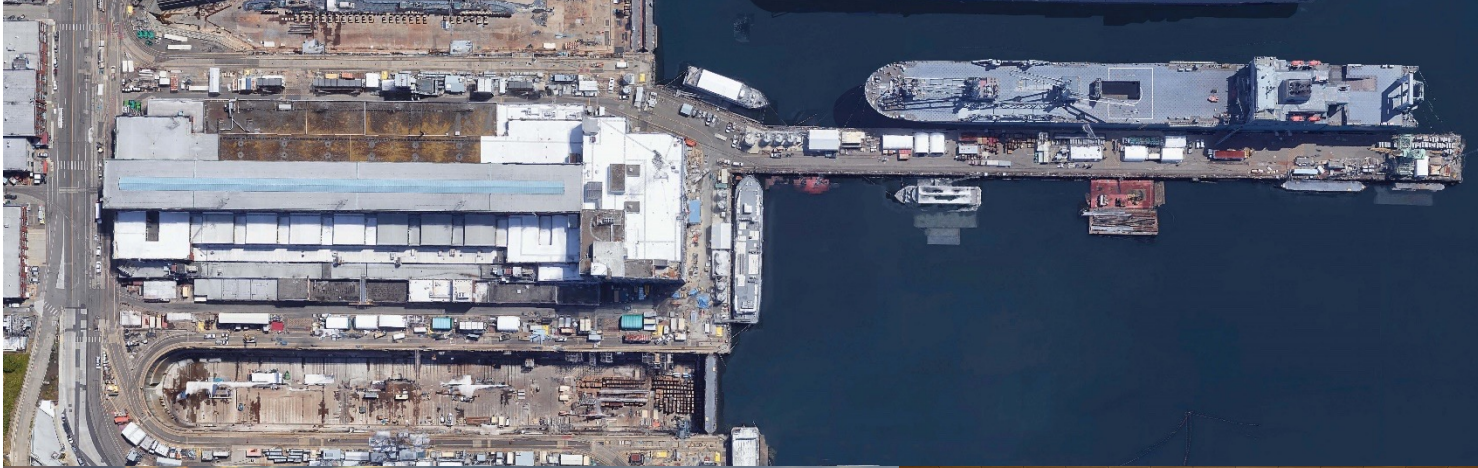
Energy & Resources

- Federal
- Mining
- Oil & Gas
- Power
- Waterpower & Dams



Water

- Federal
- Client Enterprise Systems
- Conveyance
- Waste Management
- Wastewater Treatment
- Water Resources Infrastructure
- Water Resources Planning & Management
- Water Treatment
- Wet Weather Flow & Urban Stormwater




Stantec Northwest

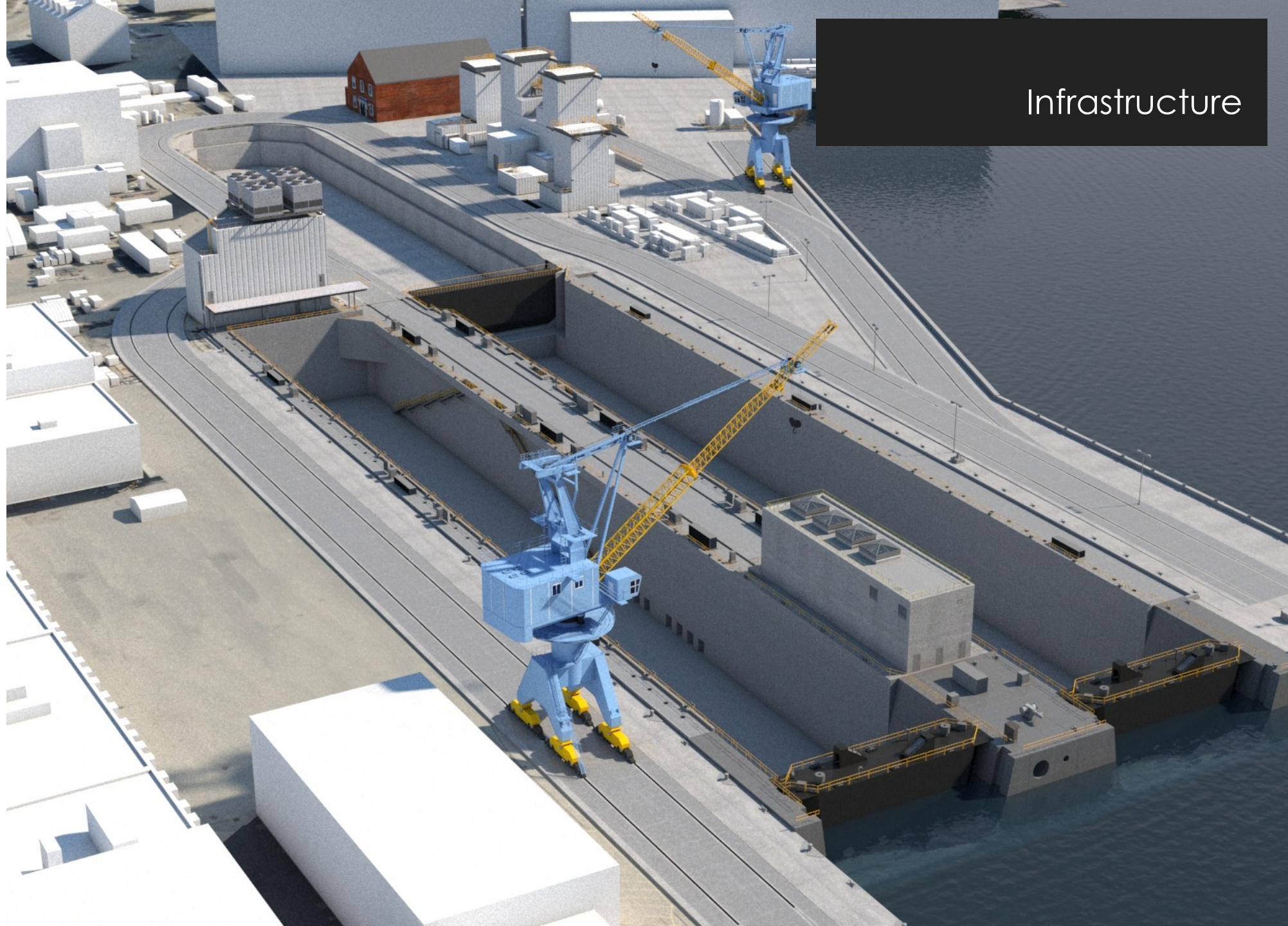
- 65-year history
- Continuously involved in NAVFAC NW A/E IDIQs, DB Projects for the past 20+ years, including:
 - Architectural
 - MEP
 - Multidiscipline
 - Civil/Structural
 - Waterfront
 - Master Planning/Industrial Engineering
- 300+ IDIQ task orders in the past 25 years
- 30+ D-B projects in the past 10 years



NAVFAC PNSY Multi-Mission Dry Dock #1

- Navy Shipyard Infrastructure Optimization Program (SIOP)
- Construction value designed \$650M
- Only Dry Dock facility for Navy designed since WW II
- Lead designer

 Portsmouth Naval Shipyard,
Kittery, Maine



Infrastructure



Pacific Fleet Maintenance Facility (FMF)

- 420,000 SF, \$158M construction, multi-purpose Navy shipyard industrial building
- Included SIOP variety of facility types, seismic requirements, partial building construction over the water and considerable footprint reduction and campus reorientation
- Waterfront operations had to be maintained at all times during construction

 Canadian Forces Base Esquimat, British Columbia

Buildings





National Renewable Energy Laboratory (NREL)

U S F E D E R A L P R O G R A M S

- High-performance building through integrated design can reduce performance risks to the Owner and constructor.
- Services:
 - Architecture
 - Interior Design
 - Lighting Design
 - Landscape
 - Master Planning

 Golden, CO

Buildings





Eielson Air Force Base Environmental Projects

- 5-year Reviews for USAF Radar Sites
- Phase IX DB MFH Utilidor
- Phase VIII DB Utilidor
- Maintain Turbine Generator #5 (SK04)
- Repair Hangar B1141 for RED FLAG Alaska
- NPDES Permitting and Surface Discharge Modeling
- WTP Upgrades & Discharge Study
- Central Heat and Power Plant Cooling Pond Analysis
- MFH Asbestos Insp.

 Eielson AFB, Alaska

Environmental





BOEM Marine Arctic Ecosystem Study (MARES)

- 2019 Excellence in Partnering Award
- Objectives
 - Moving Platforms
 - Benthic Sampling
 - Moored Platforms
 - Animal Borne Sensors
- 25+ team members including universities, env research organizations, consulting firms, and private scientists




Beaufort Sea Shelf, Alaska, Yukon, Northwest Territories



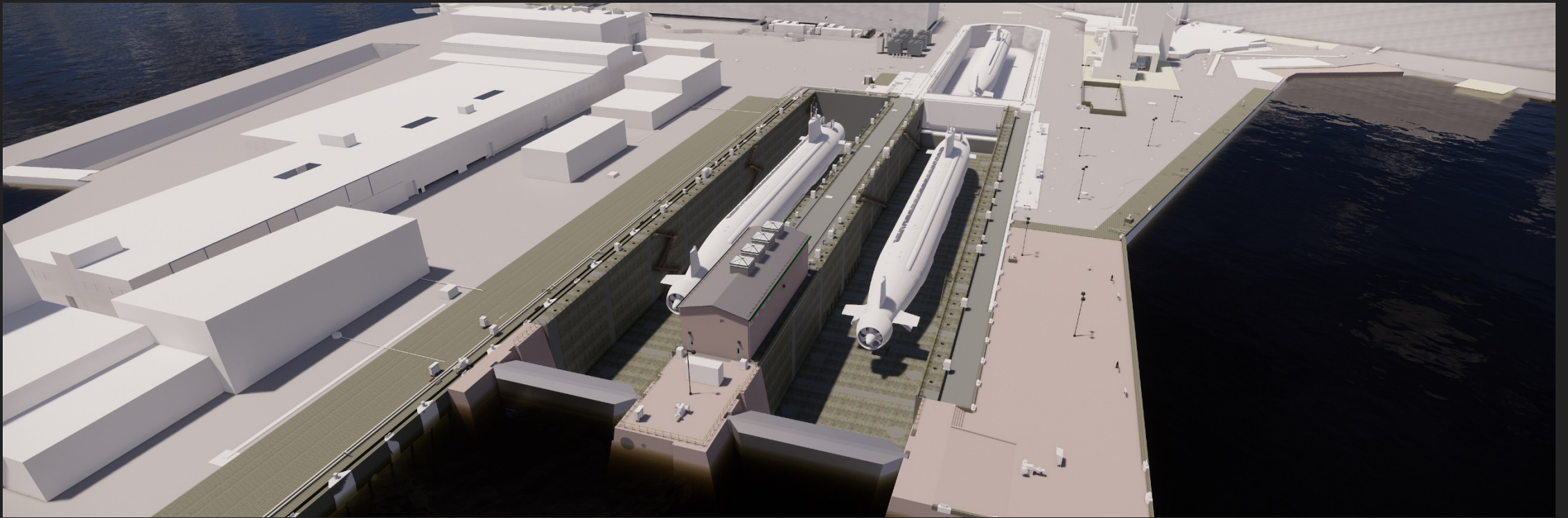
USACE New Orleans District Permanent Canal Closures and Pumps (PCCP)

- \$731M Construction Cost
- 24,200 combined pumping capacity
- 30 generators for a total of 78MW across all 3 sites
- Lead Designer

 New Orleans, Louisiana



Water



Contact Information

Lydia Griffey, Senior Principal, Transportation

Direct: 907-343-5268 | Mobile: 907-317-3323

lydia.griffey@stantec.com

Tim Pochop, PMP, Principal, Senior Environmental Engineer

Direct: 425-289-7354 | Mobile: 760-696-0995

tim.pochop@stantec.com