



George Washington Memorial Parkway

BRIEFING TO SOCIETY OF MILITARY ENGINEERS (SAME)

AGENDA

- Who we are
- 2020 Notable projects completed
 - Arlington Memorial Bridge
 - Arlington House
 - Glen Echo Carousel
- 2021 Projects
 - Netherlands Carillon
 - Marine Corps Comfort Station
- Great American Outdoors Act
 - FY21 North Parkway
 - Other NCA Projects
 - FY23-25 Programming

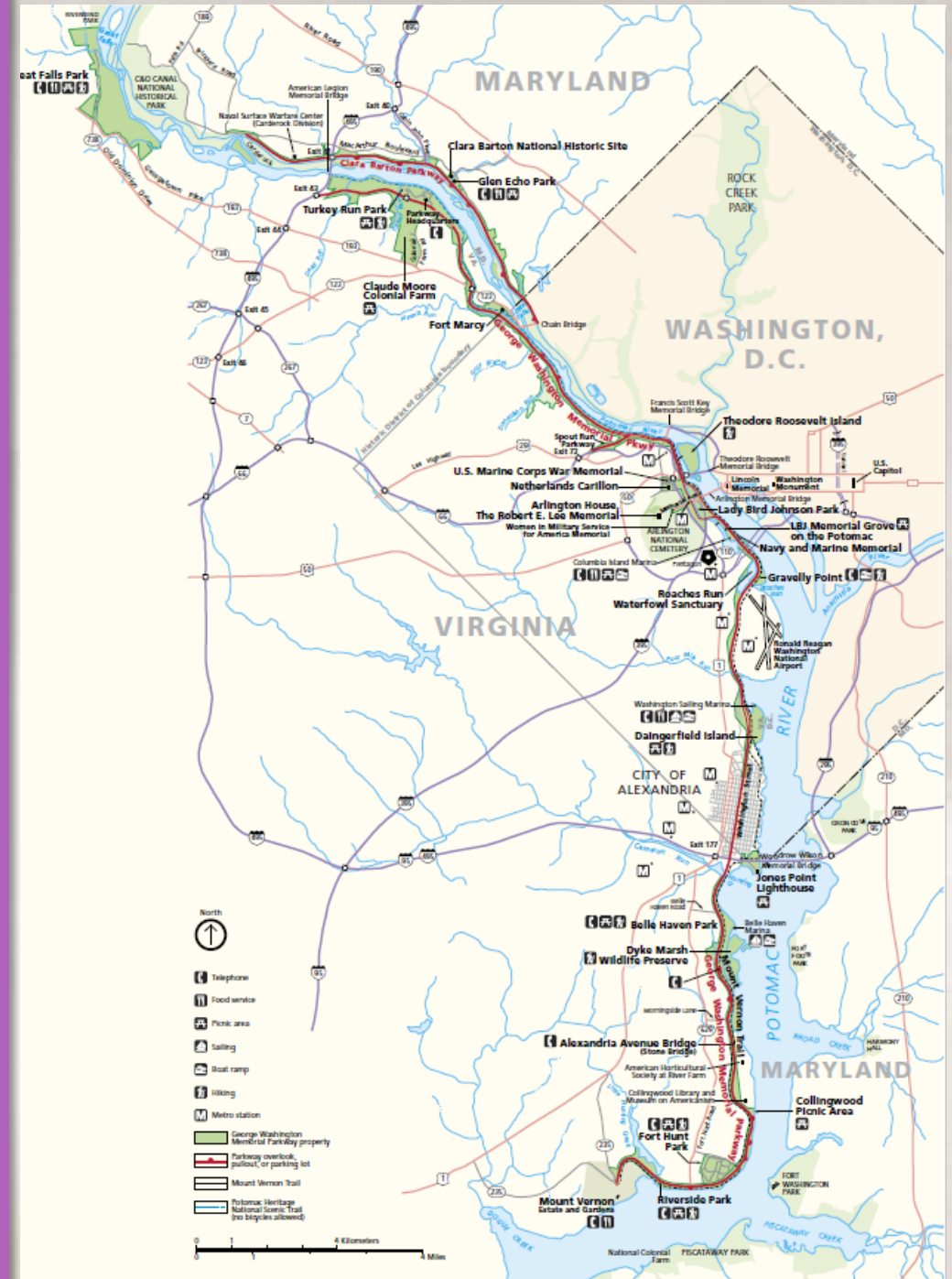
George Washington Memorial Parkway is a scenic roadway honoring the nation's first president, that protects and preserves cultural and natural resources along the Potomac River below Great Falls to Mount Vernon, and is part of a comprehensive system of parks, parkways, and recreational areas surrounding the nation's capital.

- Arlington House, The Robert E. Lee Memorial
- Clara Barton National Historic Site
- **George Washington Memorial Parkway**
- Lyndon Baines Johnson Memorial Grove
- Theodore Roosevelt Island
- Dyke Marsh Wildlife Preserve
- More than 7,300 acres
- More than two dozen associated sites

WHO WE ARE



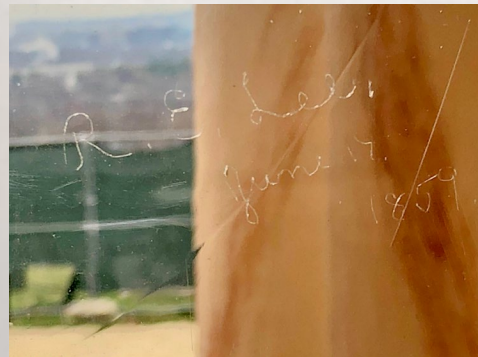
2020 PROJECTS COMPLETED



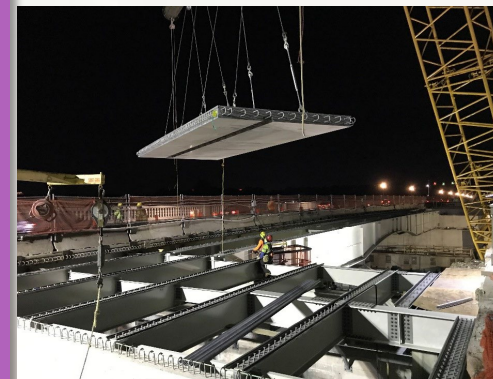
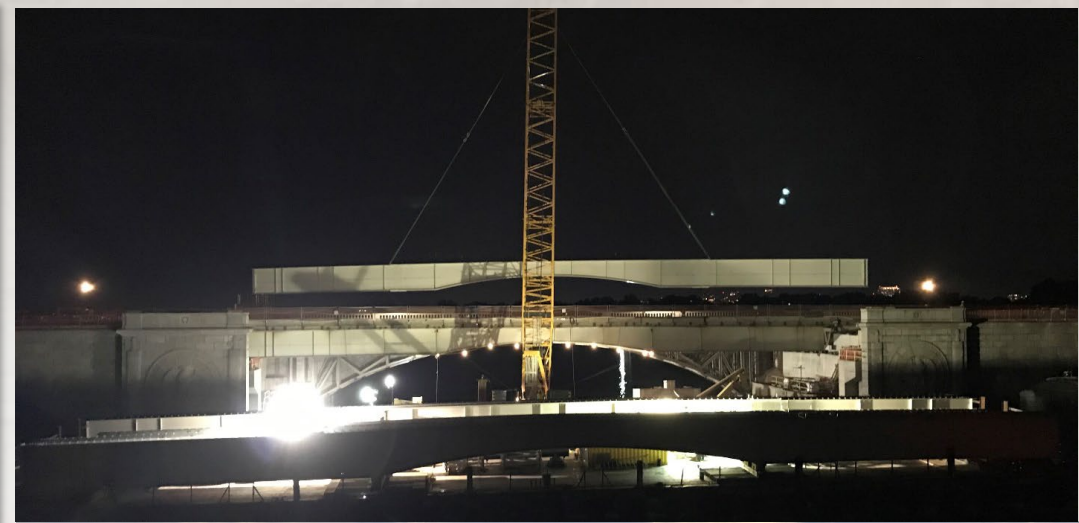
ARLINGTON HOUSE



1824 John Farley Sketch of Arlington House, ARHO CLR courtesy MVLA



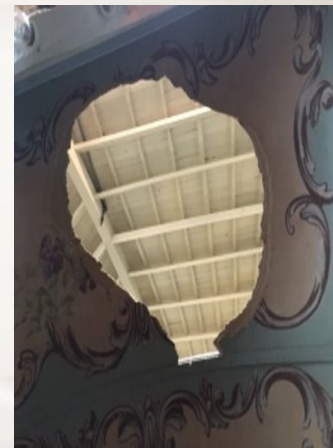
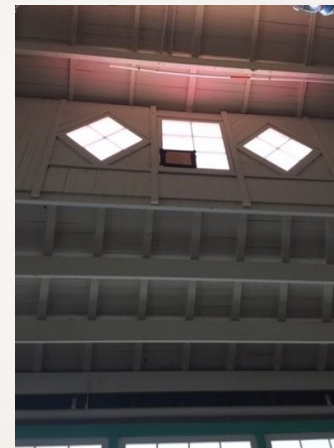
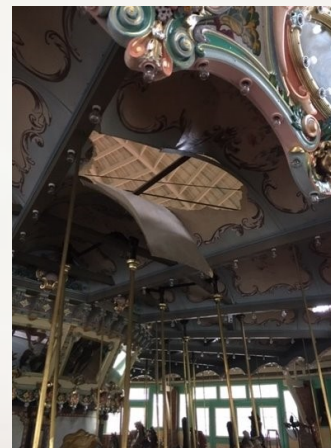
ARLINGTON MEMORIAL BRIDGE



- From 2018 to 2020 rehabilitation > \$200M
- Maintained access for 68,000 vehicles
 - 450 precast concrete panels placed
 - Rehabilitated 1,000s of pieces of granite balustrades and benches
 - Safety improvements



GLEN ECHO CAROUSEL

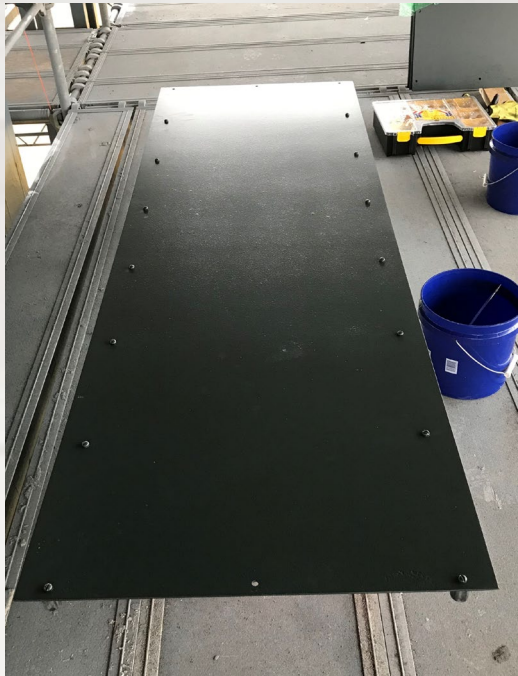


2021 PROJECTS

- Netherlands Carillon
- Upcoming – Marine Corps Comfort Station



NETHERLANDS CARILLON

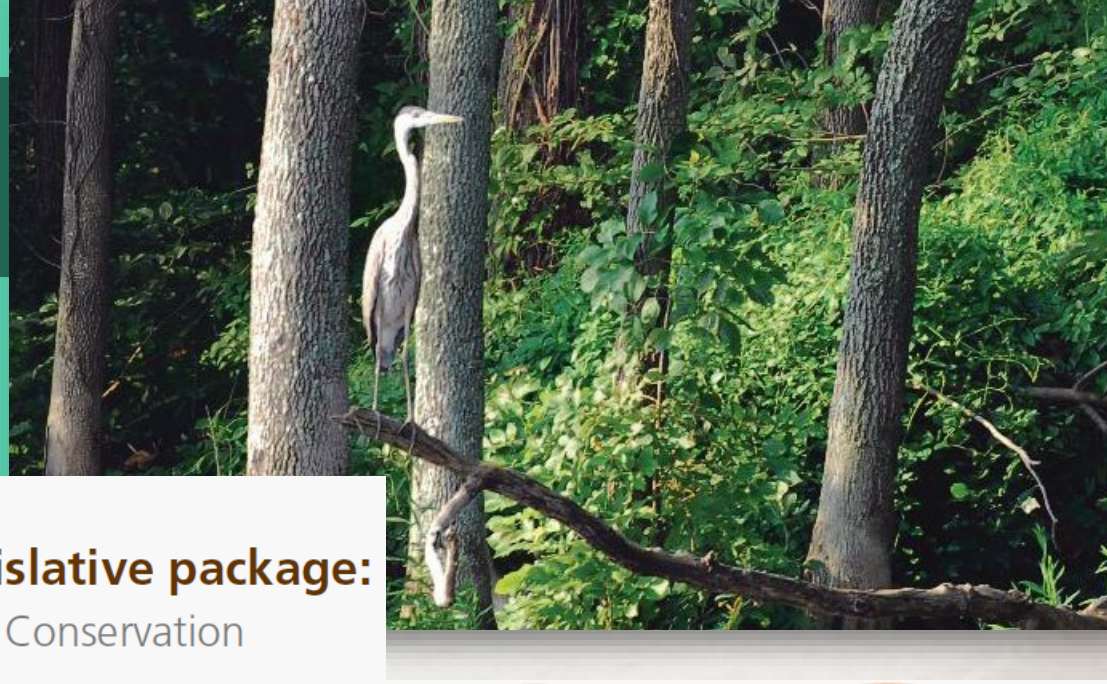


MARINE CORPS COMFORT STATION

- NTP issuance early February 2021
- Mobilization by March 2021
- Estimated completion early 2022



GREAT AMERICAN OUTDOORS ACT



The GAOA combines two conservation initiatives into one legislative package:

1. The guarantee of permanent full funding for the existing Land and Water Conservation Fund (LWCF) **and**
2. Establishment of a new National Parks and Public Lands Legacy Restoration Fund (LRF)
 - Provides the NPS up to \$1.33 billion annually from FY21-25

FY21-22

NPS leadership will select LRF projects from existing LIC projects and PSAs.

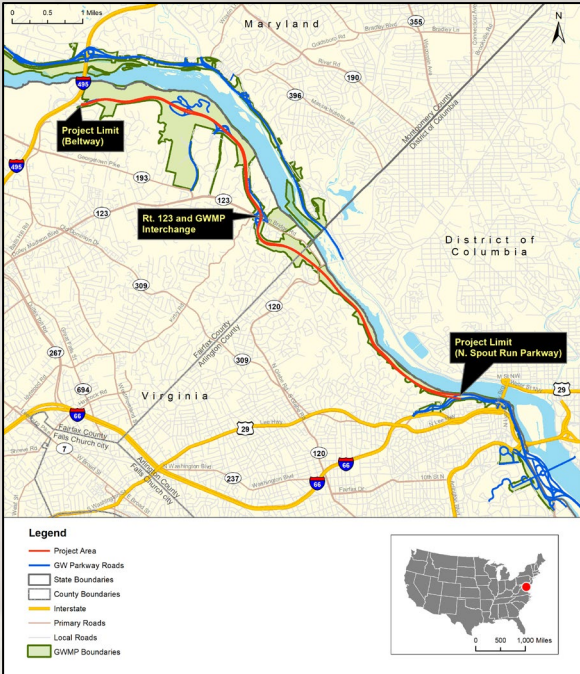
FY23-25

The GFIP process will identify potential projects for LRF funding.



GEORGE WASHINGTON MEMORIAL PARKWAY FY21

GWMP North Section Rehabilitation



7.6 miles from I-495 to Spout Run



Northbound and Southbound lanes



May 2019 major sinkhole



Sinkhole repair to 40-foot deep outfall



Current: Failing asphalt & drainage infrastructure



Current: Failed guardrail segments & patched roadway



Current: Deteriorated stonewall

CHESAPEAKE AND OHIO (C&O) CANAL FY21

Repair Failing Dam #5 Left Abutment

Statement of Purpose:

Repair the failing left abutment of Potomac River Dam #5 to prevent possible loss of life, a sudden release of water, the loss of a historic structure and loss of recreation use of the impounded reservoir.

Schedule:

- Estimated Construction Award: **FY2021/Q4**
- Estimated Compliance Complete: **FY2022/Q4**
- Estimated Design Complete: **FY2022/Q4**
- Estimated "Substantially Complete"
Construction: **FY2024/Q4**



NATIONAL MALL AND MEMORIAL PARKS (NAMA) FY21

Rehabilitate Pedestrian/Bicycle Path from Inlet Bridge to Virginia Ave NW (Kennedy Center Trail Reconstruction)

Improve visitor experience and access to West Potomac Park for bicyclists, persons with disabilities, and people with strollers. Project will overlay asphalt for bike and pedestrian path from Inlet Bridge to Memorial Bridge along Ohio Drive, with sites in West Potomac Park. Project leverages previous investments by the Kennedy Center and tunnel planned for the Theodore Roosevelt Bridge abutments.



Schedule

- Estimated Construction Award: **FY2021/Q2**
- Design is complete
- Estimated "Substantially Complete" Construction: **FY 2022/Q1**

NATIONAL MALL AND MEMORIAL PARKS (NAMA) FY21

Rehabilitate Historic Belmont Paul House

To meet modern demands of increasing visitation, work includes

Exterior improvements: roofing, painting and restoration of windows, doors, frames, pilasters; new storm drain; restoration of brick pavers; and replacement of chilled water lines.

Interior improvements include: structural repairs to wooden floors and staircase; painting walls, ceilings, and trim; installation of a new sprinkler system; installation of new electrical connections, light fixtures, conduits and conductors, and new electrical panels; and installation of a new chiller and HVAC system.



Schedule

- Compliance is complete
- Est. Construction Award: **FY2021/Q4**
- Design is complete
- Estimated “Substantially Complete” Construction: **FY 2023/Q1**

PROJECT PARTNERS

NPS

- Denver Service Center
- Regional Contracting Office
- Harper's Ferry Center
- Historic Preservation Training Center

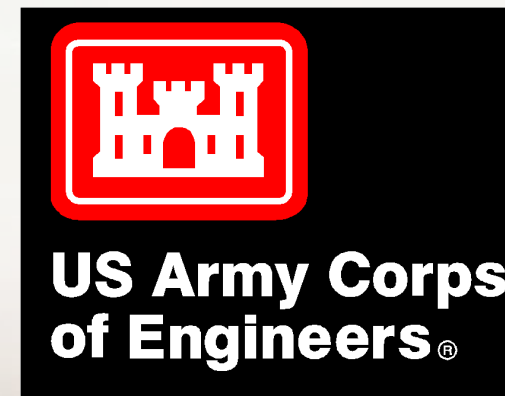


PARTNERS

Transportation and Trail Projects



Civil Works (Dredging)





George Washington Memorial Parkway Headquarters

700 George Washington Memorial Parkway

McLean, VA 22101

Email: Susan_Wong@nps.gov