

Kim Engineering, Inc.

Geotechnical and Civil Engineering, Land Surveying,
Landscape Architecture, Construction Inspection and Material
Testing, Subsurface Utility Engineering

www.kimengineering.com

- ✓ Federal Disadvantaged Business Enterprise
- ✓ Federal Small Business
- ✓ MDOT MBE
- ✓ Virginia SWaM/DBE
- ✓ MWAA LDBE
- ✓ WSSC SLBE
- ✓ WMATA/DDOT DBE/SBE

Our Services

- Topographic & Boundary Surveys
- Construction Stakeout and Layout
- Geotechnical Investigations and Engineering
- Subsurface Utility Engineering (SUE)
- Site design
- Landscape Architecture
- Permitting
- Construction Inspection
- Material Testing





Kim's Experience

- MDOT
- VDOT
- DC Water
- WSSC
- M-NCPPC
- MCDOT
- MCDEP
- PGDPW
- MCPS
- AAPS
- Higher Education

What markets and agencies we want to grow in

- Army Corps of Engineers - Baltimore
- NAVFAC Mid-Atlantic
- NAVFAC Washington
- Other Federal Agencies



Potential Partnerships / Teaming Opportunities

Who we would like to team with:

- A/E/C Prime Consultants
- Design/Build Contractors
- General Contractors

What we advantages we bring:

- DBE/ SBE/MBE/SWaM certified
- Potential Mentor-Protégé partnerships
- 8(a) eligible
- Licensed Professionals in DC, MD, VA



Contact

James Fleming

jamesfleming@kimengineering.com

240-614-7678

Kim Engineering, Inc.

1390 Piccard Drive, Suite 340

Rockville, MD 20850



CCI GENERAL CONTRACTORS, LLC

SBA 8(a) Certified Steelcase Furniture Dealer

We can work with you as a Sub Contractor or Prime on projects with FF&E and furniture related services.

- Furniture Procurement
- Furniture Reconfiguration
- Inventory & Asset Management Services
- Transition Planning
- Structured Cabling
- Space Planning and Design Services
- Disposal Services (DRMO and Excess)
- Warehousing and Storage
- Carpet Procurement and installation
- Mover Services
- Demountable Wall Systems
- Audio Visual
- Furniture Rental

re/DISTRICT Partial List of Federal Customers





We Make Building Projects A Better Value

October 7, 2021

Firm Dashboard

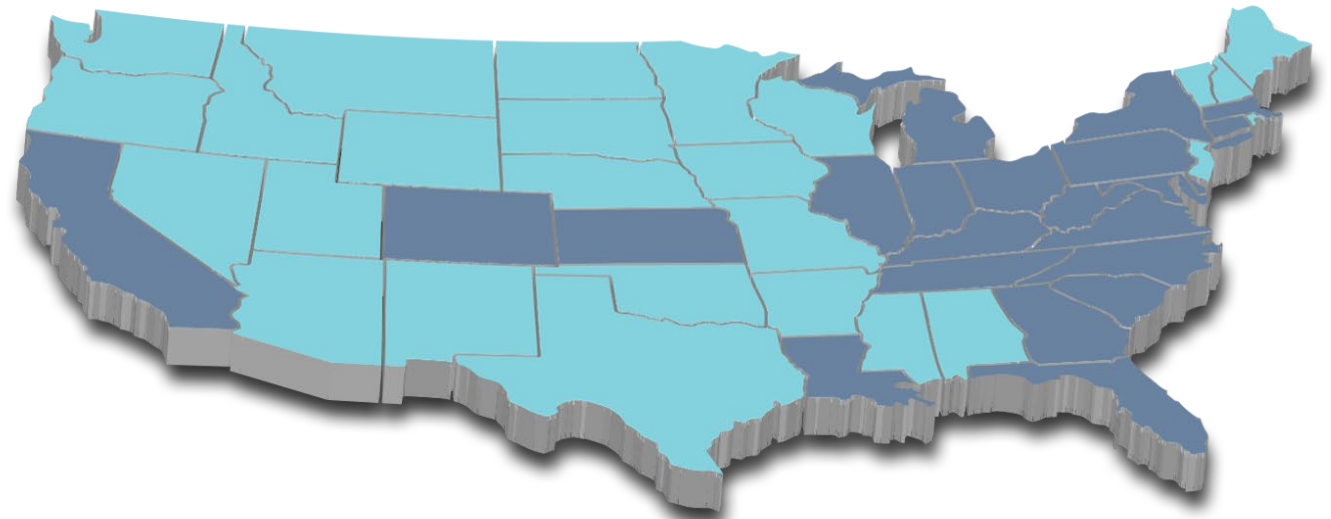


58 Employees

16 Architects and Designers,
16 MEP Engineers,
8 Non-Design Professionals (PM and CM)

- Established in 2007
- Arlington Office
- SDVOSB, CVE-Verified
- Avg. Experience – 15 years

Nationwide Experience



Services

Architecture

Interior Design

Building Systems Engineering (MEPT)

Planning

Security Risk Management

Project Services

Single-source solution for project development and execution.



Armed Forces Retirement Home
AE Blanket Purchase Agreement (BPA)



Federal Project Experience

- Over 200 Federal Government Projects
- Projects in *all* 50 states
- Construction Value Range: <\$500k - \$82M
- Construction Volume Over 20M SF
- 23 Multi-building Projects
- Average Construction Value: \$5.5M
- SF Range: 1K to 1M SF (Avg 10-15K)



Nuclear Regulatory Commission
A/E IDIQ
Office Tower Renovations

Federal Experience



- **National Institutes of Health:**
AE IDIQ 75N9901D00001
- **U.S. Nuclear Regulatory Commission:**
AE IDIQ NRCHQ4016E0002
- **Department of Veterans Affairs:**
Contracts with VA CFM (AE Eastern Region IDIQ 36C10F18D3327) in addition to VBA, VISNs, and VA Medical Centers
- **General Services Administration**
- **Department of Defense**
- **Department of Treasury:**
Armed Forces Retirement Home BPA 20342320A00001



Project Typologies

- Administrative and Office
- Public Safety and Security
- Science and Technology
- Healthcare
- Energy and Infrastructure
- Cultural and Community



National Institutes of Health, AE IDIQ
Office Renovation

Delivering Mission Excellence



Edward P. Chamberlayne, P.E., Ph.D.
Vice President | National Security Programs



<https://vimeo.com/542392669>

Trust & Experience

100+ years of experience with:

U.S. Marine Corps

Naval Facilities

Engineering Command

U.S. Army Corps of Engineers

U.S. Agency for International Development

Department of Homeland Security

Department of State

Department of Energy, among others

Tailored, Local Solutions

With **210+ Offices** across the U.S. providing over **13,000 professionals:**

Engineers

Planners

Scientists

Technicians

Consultants

Academics

Life-Cycle Approach

All stages of the development life cycle:

Strategic and Master Planning

Engineering Design

Procurement

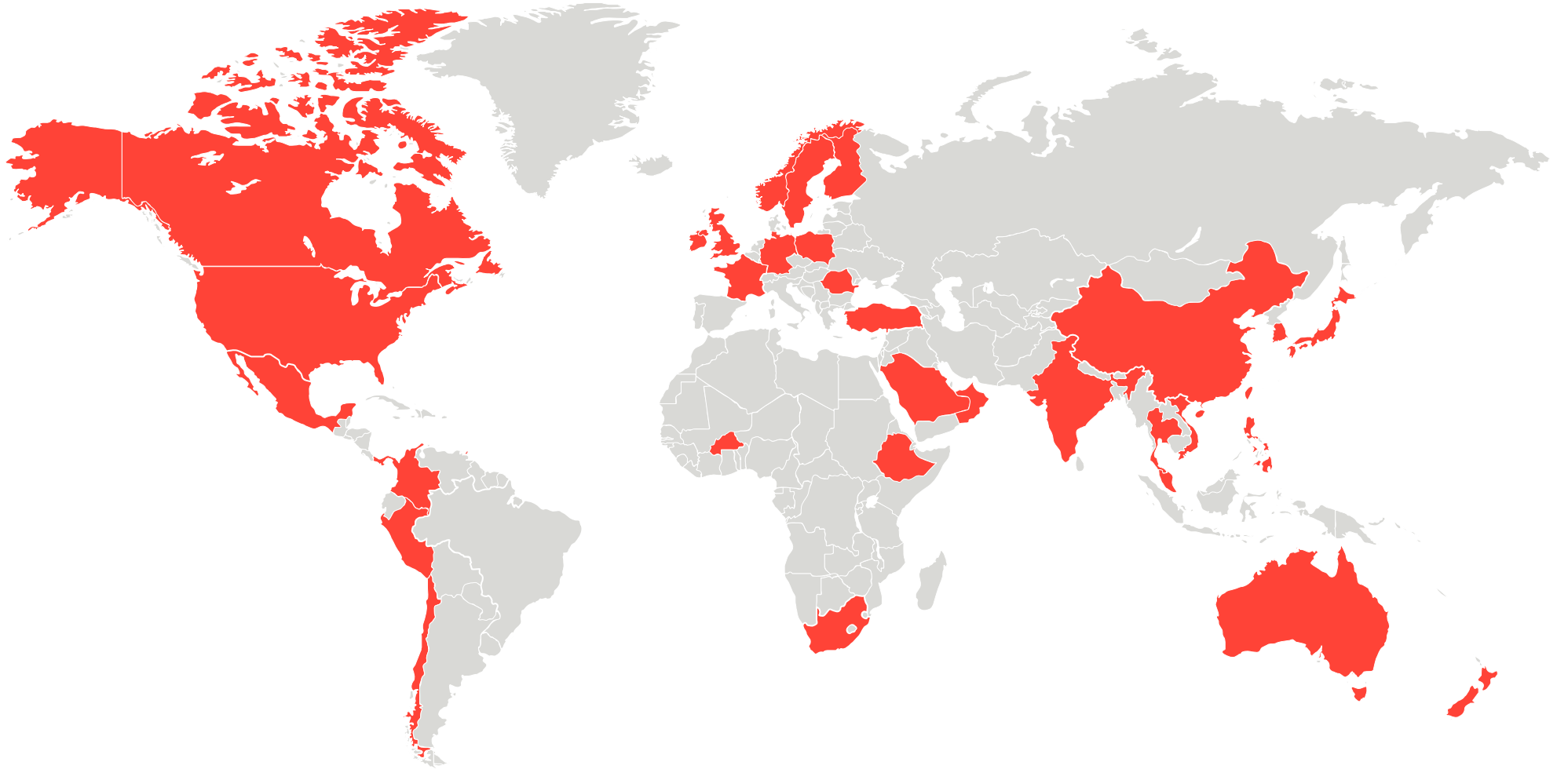
Construction

Operations and Maintenance

210+
Offices
in the US

13,000
Employees
in the US

54,000
Employees
Globally



CORE BUSINESS LINES

Advisory Services
Climate, Resilience &
Sustainability
Energy
Environment
Federal Programs
Program Management &
Construction Management
Property & Buildings
Transportation
Water



2021 ENR Rankings

#8 ENR Top 500 Design Firms

#3 ENR Top 100 Pure Design
Firms

ENR's Top Design Firms
Industry Sectors:

#4 Transportation

#8 Environment

#10 Power

#12 General Building

#15 Hazardous Waste



Federal Programs

- Facilities Design
- Master Planning
- National Security Programs
- Logistics and Emergency Management
- Environmental Services
- Overseas Integrated Development

Thank you!

Contact Information: Edward P. Chamberlayne, P.E., Ph.D.

Vice President | National Security Programs

Federal Programs – edward.chamberlayne@wsp.com



JON
RYAN, PE, CCM,
PMP, LEED AP®
Project Executive



#51 (ENR)
Top 500 Design Firms



ISO 9001:2015
Certified

\$315M
2020 Revenue



Our Markets

- Federal Programs
- Buildings & Facilities
- Water, Wastewater & Utilities
- Transportation
- Energy
- Information Technology



Full Service

- Surveys & Mapping
- Planning and Design
- Program & Construction Management
- Environmental & Sustainable Solutions
- Innovative Project Delivery



When you choose JMT, you choose a dedicated team of professionals who care as much about the outcome as we do about the journey.



We personally care.

We are a dedicated team who cares about our clients.



We make it simple.

Forget about complex processes; JMT makes it easy.



We achieve more together.

Through diversity, we collaborate to achieve the best results.



We are reliable.

Our team does whatever it takes to get the job done right.



We find the right solutions.

Our professionals are creative, innovative problem solvers.

HUITT-ZOLLARS

The background is a dark, monochromatic collage. In the top left, there is a wireframe globe. A large silhouette of a person wearing a hard hat is positioned in the upper left quadrant. In the upper right, a construction worker is silhouetted against a bright light while working on a tall metal structure. The bottom half of the image shows a group of four people in an office or meeting room, looking at a computer monitor. The overall aesthetic is professional and industrial.

Capabilities Briefing for SAME Northern Virginia Post

Company Overview – Full Service A/E Firm

- NAICS 541310, 541330
- Founded in 1975
- 500+ Professionals
- 20 Offices
- #164 on ENR Top 500
- ISO-9001 Compliant



Services We Provide

- Architecture
- Engineering
- Interior Design
- Planning
- Landscape Architecture
- Construction Management
- Asset Management
- Surveying
- Structural

ADVANCEDESIGNSM

At Huitt-Zollars, ADVANCEDESIGN is a working concept and attitude that we apply to all of our projects. In very simple terms, what we mean by ADVANCEDESIGN is that at every step of the design process we are looking to deploy meaningful innovation.

History of Support to the Federal Government

- **Current Federal**

- Contracts:**

- USACE Fort Worth District
- USACE Tulsa District
- USACE Albuquerque District
- USACE Baltimore District
- USACE San Francisco District
- California Military Department
- US Marshall's Service

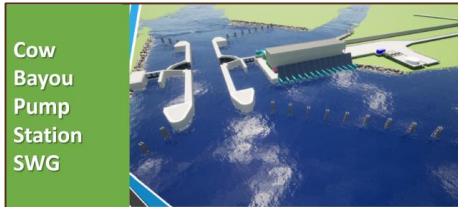
- **Highlights**

- MCB Guam Master Planning & Preliminary Civil Design
- Fort Bliss Expansion
- Fort Bliss Hospital
- DHA Medical Facilities & Hospitals
- VA Hospitals & Cemeteries
- USDA Laboratory & Research Facilities
- Facilities Conditions Assessments
- Construction Phase Services
- Southern Border Security
- Bureau of Engraving & Printing
- Numerous Military & IIS Facilities

Mentor Protégé Partners



- Engineers
- DVBE
- HQ in New Orleans, LA
- USACE Contracts
 - New Orleans District
 - Fort Worth District



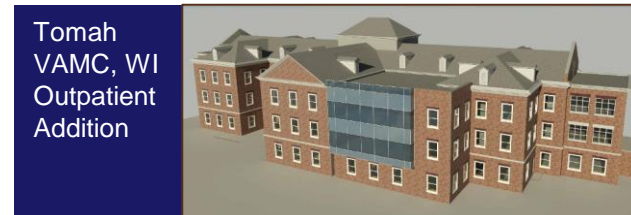
Cow Bayou Pump Station SWG



Granger Lake Design SWF



- Architects
- SDVOSB
- HQ in Alexandria, VA
- Department of Veterans Affairs among other clients



Tomah VAMC, WI Outpatient Addition



Erie, PA VAMC Addition

Example Projects



**Fort Bliss Replacement Hospital
Infrastructure Design**



**Bureau of Engraving & Printing
DC Currency Facility**



DHS/CBP Border Patrol Stations



**Dynamic Component Repair Facility,
Corpus Christi Army Depot**



**Building 5376 Renovation
Barksdale AFB**



**Bureau of Engraving & Printing
Expansion Western Currency Facility**

HUITT-ZOLLARS

ADVANCEDDESIGNSM

SZ PM CONSULTANTS, INC.

A WOMAN-OWNED PM/CM AND ENGINEERING SMALL BUSINESS

Founder and President: **Suli Wang**, PE, BCEE, PMP, RMP, SP, CCCA, CDT, PMI-SME

Business Development Consultant: **Michael Pavlides**, F. SAME, F. ASFPMP, CFM,
LM ASCE

ABOUT SZ PM CONSULTANTS, INC.

- Established in 2011 – 10 years of stable growth
- Certified WOSB, SBE/DBE/MBE/WBE (DOTs), CBE (DC), LDBE (MWAA), SLBE (WSSC)
- Offices in Virginia, Washington DC, Maryland
- Repetitive subcontract relationships with 22 AE firms
- 26+ Highly Credentialed PM, CM, and Engineering Staff:
 - PEs PMI - SME PMI - SPs AWS CERTIFIED WELDERS
 - BCEEs USACE CQM-Cs CVS ACI FIELD TECHNICIAN I
 - PMPs CCCAs LEED AP, LEED GA
 - RMPs CDTs NASSCO PIPELINE ASSMT & CERT PROGRAM
- Largest ongoing project: \$3.6B Hampton Roads Bridge-Tunnel Project

SZPM SERVICES

- **Program, Project, and Risk Management**
 - ✓ Project controls – schedule and budget control
 - ✓ Office engineering, project administration, and document control
 - ✓ Permitting assistance and review
 - ✓ Utility coordination
 - ✓ CADD and BIM support
 - ✓ Value Engineering
 - ✓ Safety Consulting
 - ✓ On-site staff augmentation
- **Water, Wastewater, and Stormwater Planning, Engineering, and Design**
- **Construction Management and Inspection**

SZ PM CONSULTANTS, INC.

MARKETS

- Program/Project Management:
- Water Infrastructure:
- Transportation:
- Construction Management:
- Federal:

CUSTOMERS

Amtrak, MDOT, WSSC, DC Water, VDOT, DDOT

DC Water, WSSC, City of Baltimore DPW

DDOT, MDOT, VDOT, WMATA

DC Water, DDOT, MDOT, VDOT, WMATA

Amtrak

THE SZPM MISSION

- Be a quality services provider and responsive partner
- Provide experienced staff and competent technical services
- Foster long-term and mutually beneficial relationships
- Achieve high customer satisfaction

OUR INTERESTS

- Subcontract Opportunities
- Partners to support our Prime Contract Pursuits
- SBA Mentor-Protégé Relationship
- Joint Venture Relationships

October 2021

Siemens Government Technologies Capabilities Briefing

Our Parent Company Profile

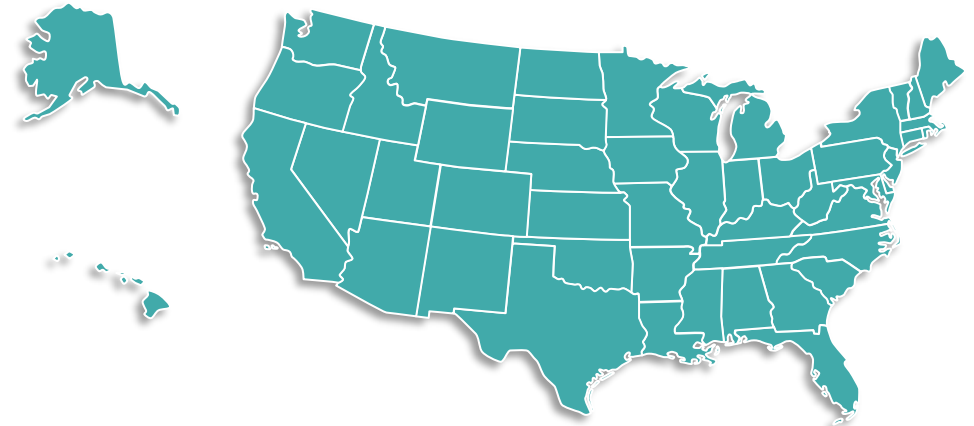
Siemens Globally & U.S.

Global

- Operating in approximately **200** countries/regions
- **\$98+** billion in sales
- **372,000** employees
- **Over \$6 billion** in R&D annually



U.S.



- **US is our largest, fastest growing market**
- **\$20+** billion sales
- **50,000+** employees
- **\$1B+** billion U.S. R&D via Princeton NJ hub
- **75 CONUS** production sites

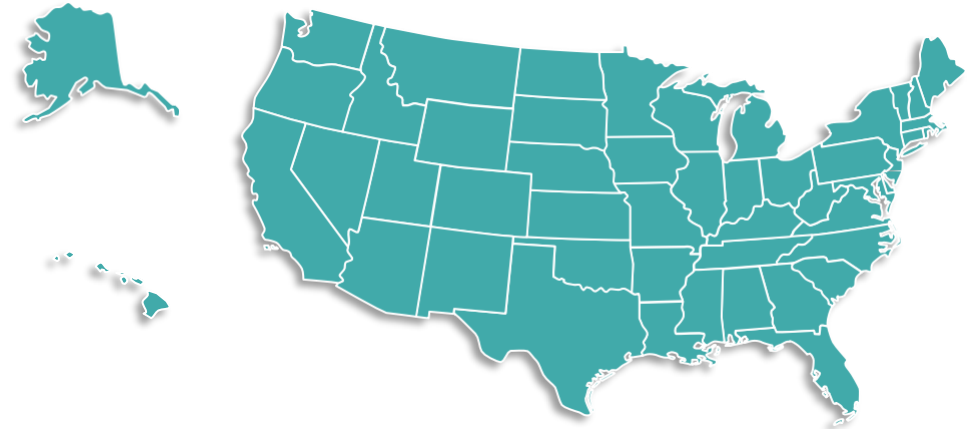
Siemens Government Technologies, Inc.

Global Support

- **Multi-billion dollar, decades-long support for the U.S. Government**
- Integrator for Siemens products, services, solutions to DoD/Mil & Federal customers, **CONUS** and **OCONUS**
- Sponsored by the DCSA and SGT maintains a **TS Facilities clearance**



U.S. HQ



- **HQ for Siemens Government Technologies, Inc.** in Reston VA
- **300** employees in VA and other locations across the US
- Onsite with DoD/Federal customers across **CONUS** and **OCONUS**

Comprehensive solutions to meet tomorrow's challenges



Smart Infrastructure

- Intelligent building systems
- Low-voltage power distribution
- Medium-voltage power solution
- Controls and monitoring devices
- Energy automations
- Smart grid solutions to ensure supply security and reliability



Digital Industry

- Artificial intelligence and machine learning to improve workflows
- Digital twin technology to optimize production and decision making
- Augmented and virtual reality
- Advanced cyber security solutions with 24/7 monitoring and real-time incident response

Contract Vehicles: Multiple Federal Customers Use to Acquire Our Tech/Services



- Siemens GSA Schedule 70
- NASA Solutions for Enterprise-Wide Procurement SEWP (via SB partners)
- DISA DITCO (direct) and Encore (via partner)
- NCMS National Center for Manufacturing Sciences
- NSRP National Shipbuilding Research Program
- **Army Energy Savings Performance Contract (ESPC) IDIQ**
- **Federal Utility Energy Savings Contracts (UESC)**
- **Army Utility Monitoring Control System (UMCS) IDIQ**
- **Department of Energy ESPC IDIQ**
- Various direct contracts with Siemens
- Various indirect contracts via partners (Large and Small SIs)
 - Network-Centric Solutions-2 (NETCENTS-2)
 - Small Business Enterprise Applications Solutions (SBEAS) IDIQ



Team members needed in Hawaii,
Guam, and Asia Pacific
