



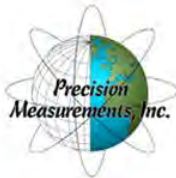
# SAME NoVA Post 7<sup>th</sup> Annual Business-to-Business (B2B) Engagement

National Museum of the U.S. Army at Fort Belvoir  
October 6, 2022

Photo By Duane Lempke



## SPECIAL THANKS TO OUR POST'S 7<sup>TH</sup> ANNUAL BUSINESS-TO-BUSINESS (B2B) ENGAGEMENT SPONSORS



# Kimley»»Horn

Expect More. Experience Better.

October 2022



# Kimley»»Horn

**6,500+**

STAFF IN  
100+ OFFICES  
NATIONWIDE

**FORTUNE'S**

BEST PLACES TO WORK  
15 YEARS IN A ROW

EXPECT MORE.  
**EXPERIENCE  
BETTER.**

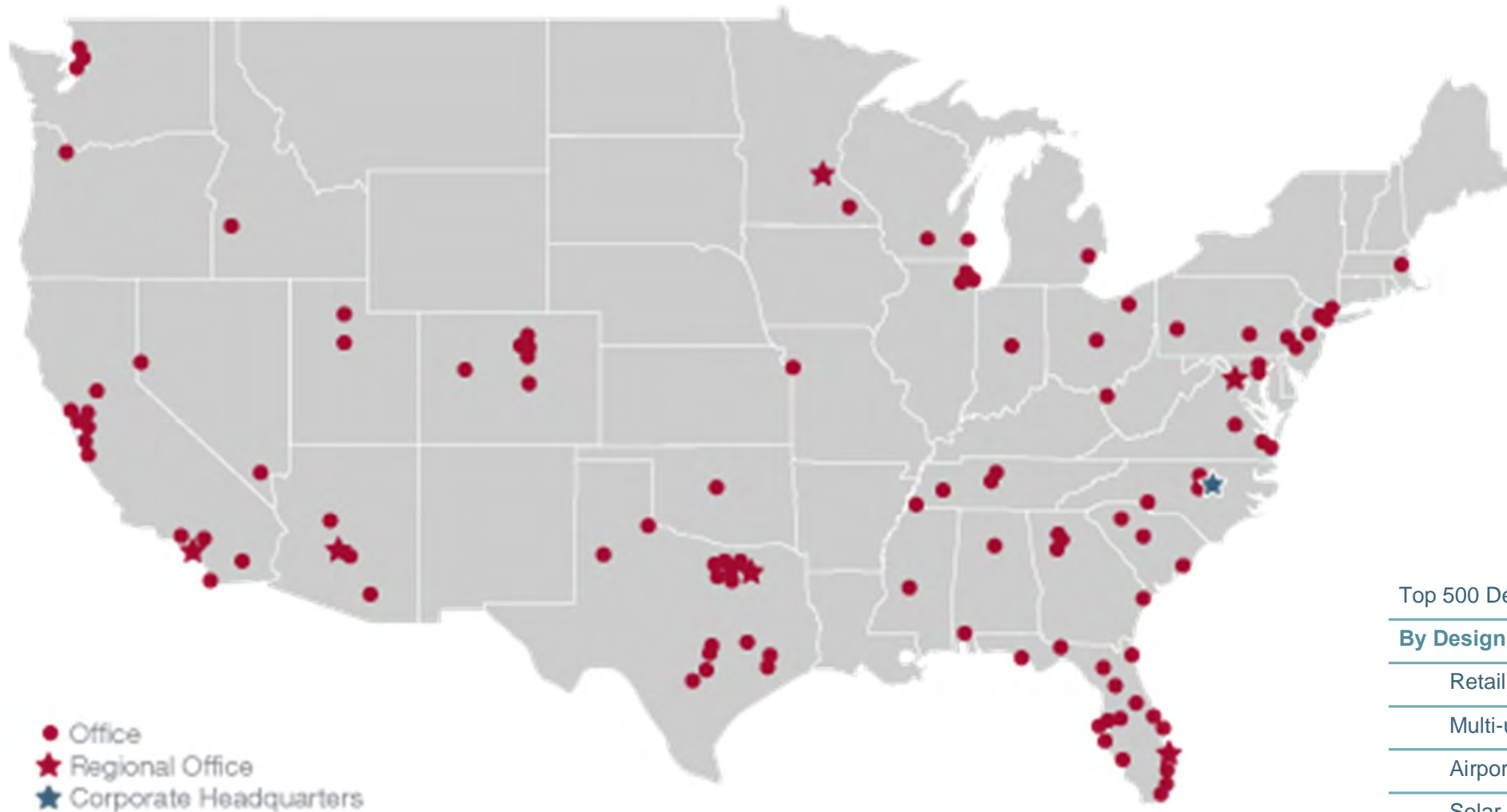
**AGILE STAFF OF  
PROFESSIONALS:**

CIVIL, TRANSPORTATION  
AND STRUCTURAL  
ENGINEERS; PLANNERS;  
LANDSCAPE ARCHITECTS;  
AND ENVIRONMENTAL  
SCIENTISTS

**11 FEDERAL CONTRACTS**

**FOUNDED IN 1967**

# Locations and ENR Rankings



**Kimley»»Horn**



Top 500 Design Firms	10
<b>By Design Specialty:</b>	
Retail	1
Multi-unit residential	1
Airports	6
Solar power	2
Pure design	6
Transportation	7
Highways	8
General building	5
Water treatment and desalination	15
Mass transit and rail	14
Water supply	33
FORTUNE's 100 Best Places to Work 2005-2022	

# Services

- Site Civil
- Master Planning
- Landscape Architecture
- Transportation
- Traffic Engineering
- Aviation
- Water Resources
- Structural Engineering
- Resiliency
- Design-Build RFPs
- Anti-Terrorism/Force Protection
- Pavements
- Asset Management
- Program Management
- Information Technology Services
- Environmental Services
- Utility Services

**Kimley»»Horn**



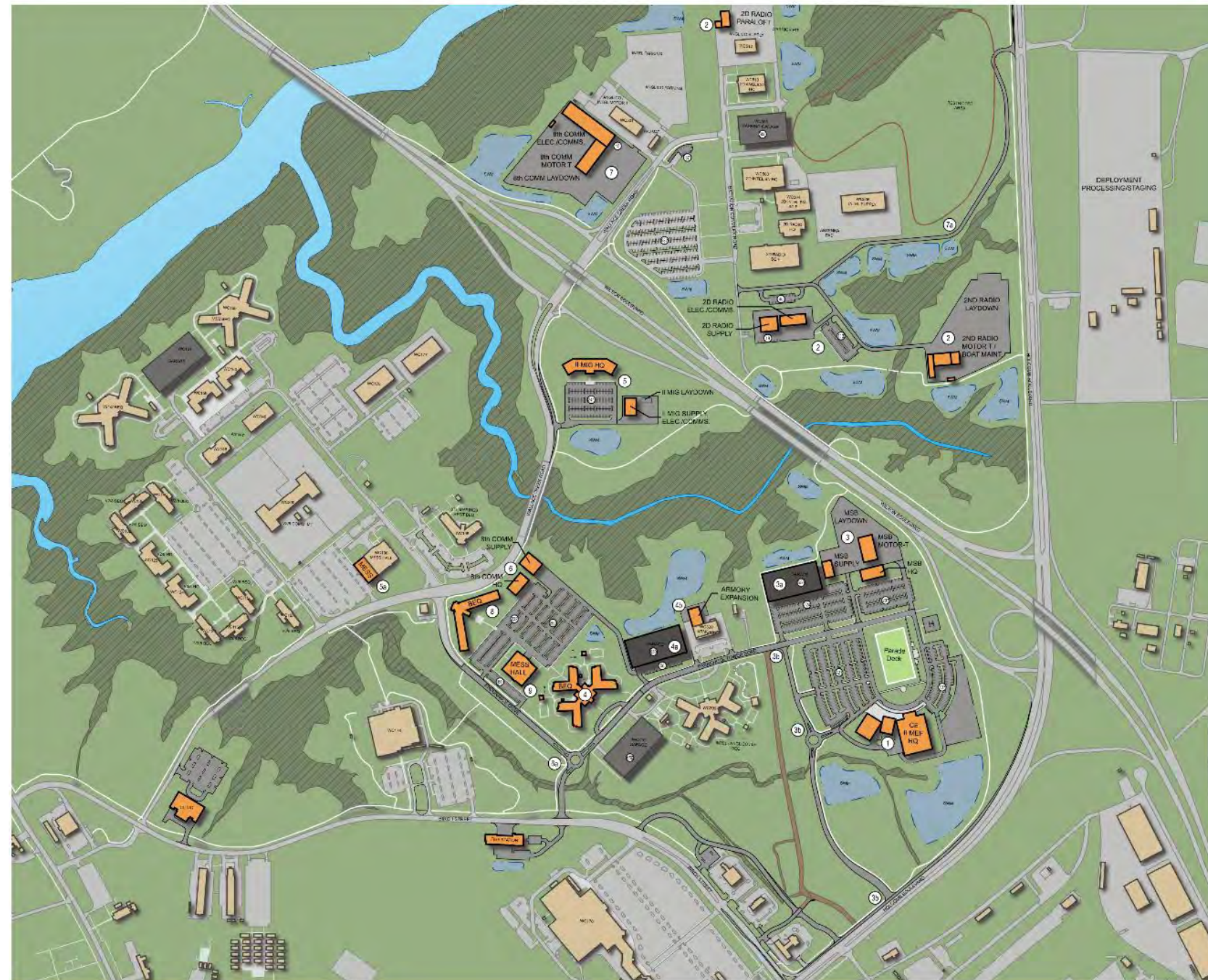
# Site Civil



Physical Fitness Center, Camp Lejeune, NC

# Master Planning

## Wallace Creek Area Development Plan Update Camp Lejeune, NC



- Legend**
- Existing Buildings
  - Existing Pavements
  - Existing Garages
  - Proposed Buildings
  - Proposed Pavements
  - Proposed Garages
  - Surface Water
  - Wetlands
  - Stormwater Mngt.

- Short-Range Projects (0-5 Years):**
1. CE II MEF HQ Building & Supporting Facilities
  2. 2D RAD BN Phase II
  3. MSB HQ & Supporting Facilities
  - 3a. MEF & MSB Parking Garage
  - 3b. Wallace Creek South Connector

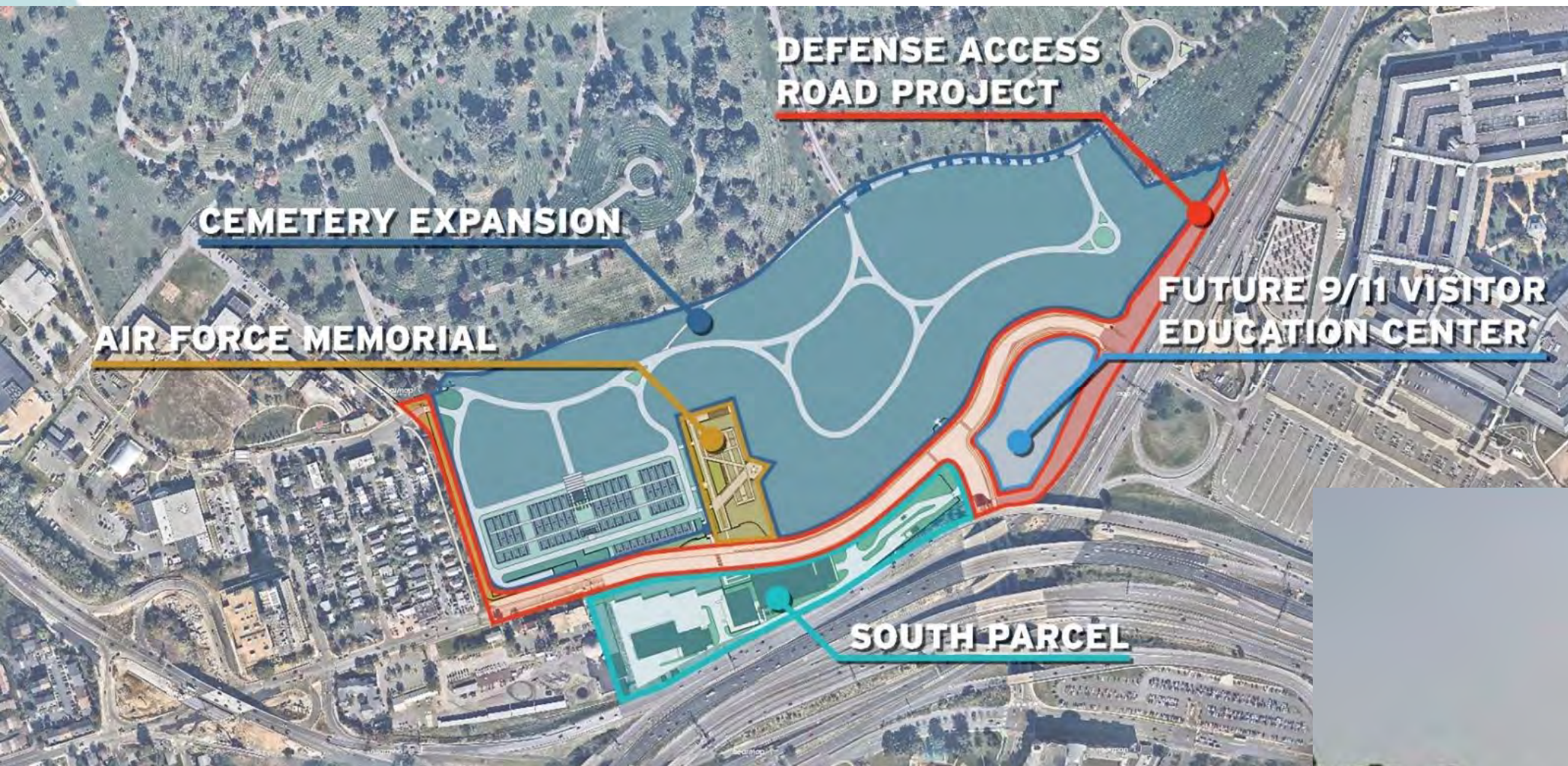
- Mid-Range Projects (6-10 Years):**
4. II MIG BEQ (402 Rooms)
  - 4a. II MIG Parking Garage
  - 4b. II MIG Armory Addition/Expansion
  5. II MIG HQ/SCIF & Supporting Facilities
  - 5a. Mess Hall Addition

- Long-Range Projects (11-15 Years):**
6. 8th COMM BN Phase I (HQ & Supply)
  - 6a. Roundabout for Parachute Tower Road/Endurance Drive
  7. 8th COMM BN Phase II (Supporting Facilities)
  - 7a. Wallace Creek North Connector
  8. II MIG BEQ (310 Rooms)
  9. New Mess Hall





# Transportation Planning and Design



Arlington National Cemetery  
Defense Access Road (DAR)  
Project, Arlington, VA



# AT/FP Design



Kimley»Horn

Slocum Road Entry Control Facility, Cherry Point, NC

# Resiliency Planning and Design

LaSalle Avenue Corridor  
Resiliency Plan  
Hampton, VA



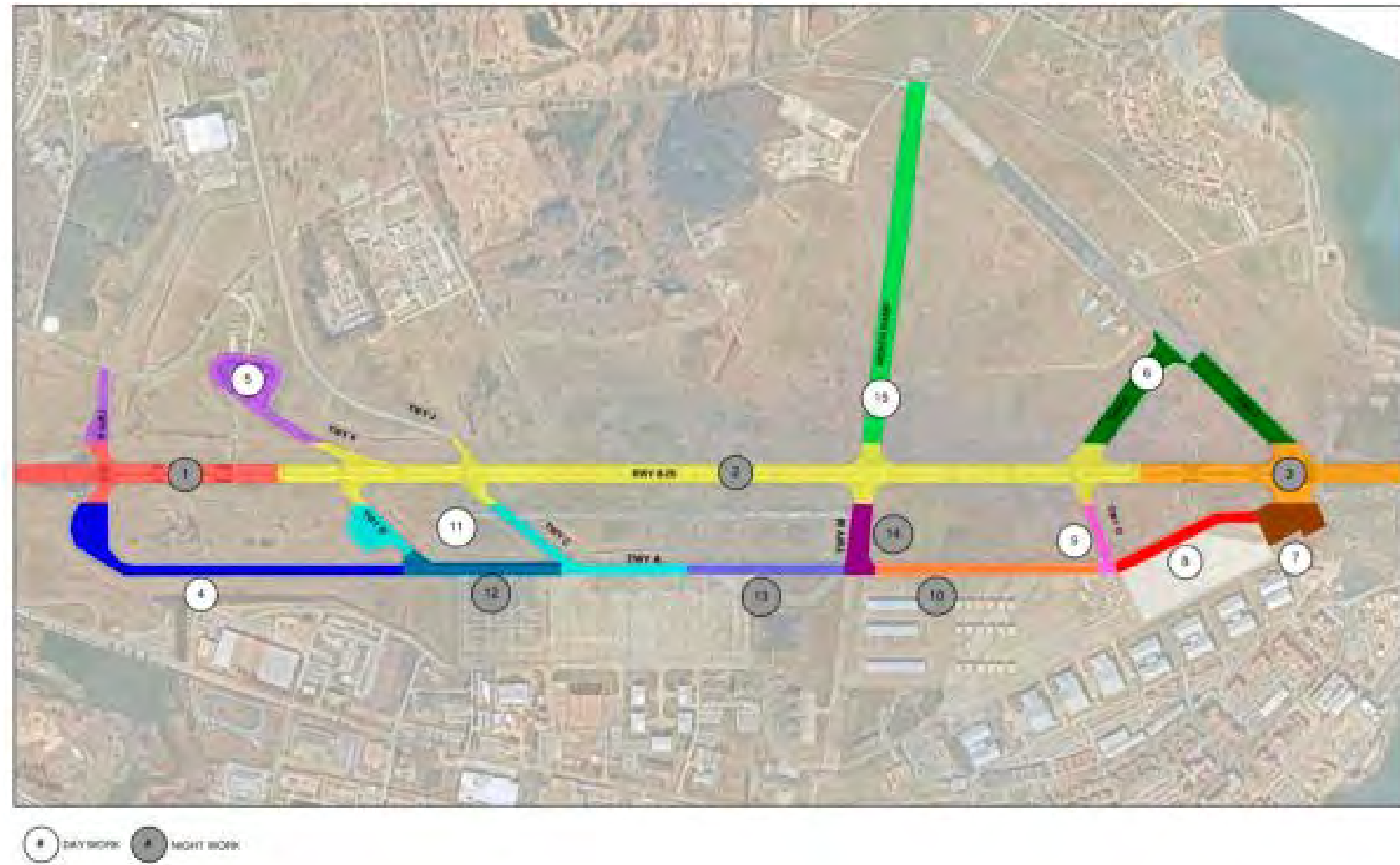
# Design-Build RFPs

Onslow Bridge and RR Trestle  
Camp Lejeune, NC



Kimley»Horn

# Military Aviation



Charrette to Repair Runway and Taxiway Shoulders  
Joint Base Langley-Eustis, VA

# Aviation

Runway 5/23 and Taxiway C Rehabilitation  
Norfolk International Airport, VA



Kimley»Horn

# Stormwater Management

Stormwater Master Planning  
Virginia Beach, VA



Kimley»Horn

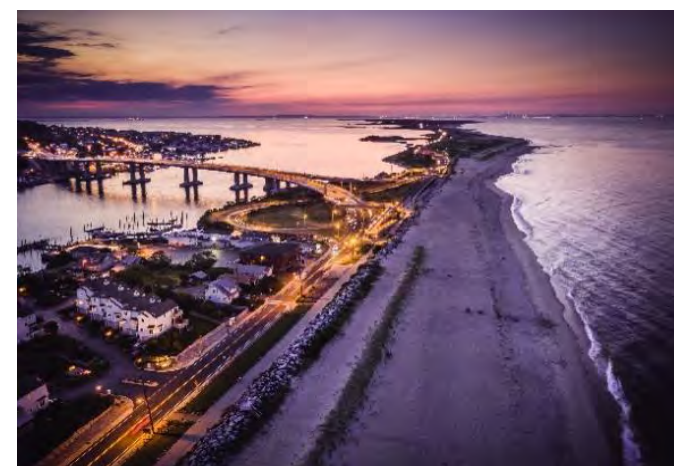
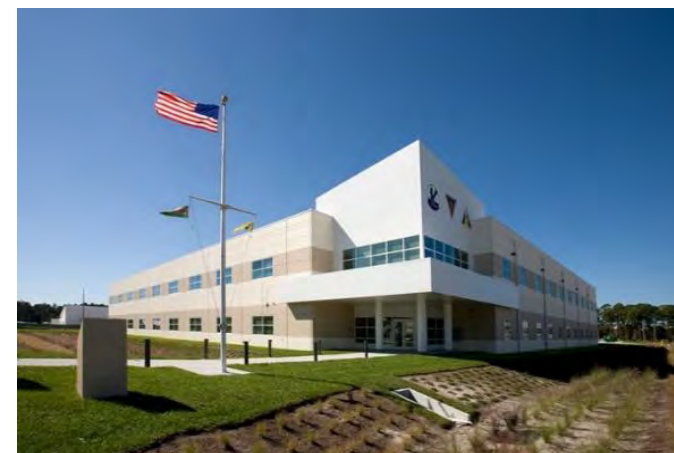
# EKH Infrastructure – A Mentor-Protégé Agreement



8(a), HUBZone, WOSB, EDWOSB |  
UEI YMKWKCH7W2V6 | CAGE 96WS8

EKH Infrastructure, a  
Mentor-Protégé Joint Venture  
of ENGenuity Infrastructure  
and Kimley-Horn

Kimley»Horn





# Contract Vehicles

- NAVFAC Mid-Atlantic IDIQ, Contract N4008519D9008
- NAVFAC Mid-Atlantic GCC, Contract N62470-13-D-6020
- GSA 00CORP Professional Services Schedule, Contract GS-10F-0501X
- FHWA Eastern Federal Lands Highway Division, Contract No. 693C7319D000001
- Air Force AE NEXT, Contract No. FA890321D0024

# Contact Us



R. John Martin, P.E., Col, USAF (ret.)  
[John.Martin@kimley-horn.com](mailto:John.Martin@kimley-horn.com)  
703.674.1305



Jamie Cox, P.E.  
[Jamie.Cox@kimley-horn.com](mailto:Jamie.Cox@kimley-horn.com)  
540.523.1193

# Services

- Site Civil
- Master Planning
- Landscape Architecture
- Transportation
- Traffic Engineering
- Aviation
- Water Resources
- Structural Engineering
- Resiliency
- Design-Build RFPs
- Anti-Terrorism/Force Protection
- Pavements
- Asset Management
- Program Management
- Information Technology Services
- Environmental Services
- Utility Services

**Kimley»»Horn**



Society of  
**SAME**  
American Military Engineers



**NoVA**  
Northern Virginia Post



Photo By Duane Lempke

**WOODS • PEACOCK**

ENGINEERING CONSULTANTS



# **SAME NoVA Post 7th Annual B2B Event**

**October 6, 2022**

# OUR SERVICES

Structural Engineering

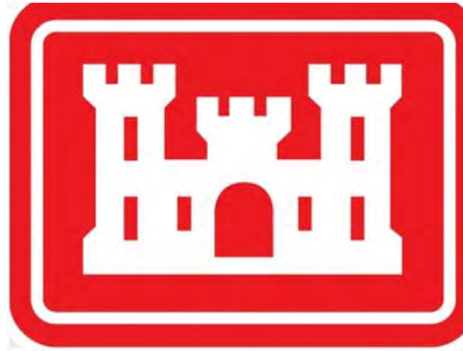
Blast | AT/FP

# OUR CERTIFICATIONS



MWAALDBE Certified





Smithsonian











**WOODS • PEACOCK**  
ENGINEERING CONSULTANTS

**Ronald Reagan Washington National Airport  
Terminal 2, Concourse E, Arlington, VA**

**New Design**



**WOODS · PEACOCK**  
ENGINEERING CONSULTANTS

**Smithsonian Institution National Air and  
Space Museum Renovation, Washington, DC**

**Renovation**



**WOODS · PEACOCK**  
ENGINEERING CONSULTANTS

**Macdonough Hall, Infrastructure Upgrade  
U.S. Naval Academy, Annapolis, MD**

**Renovation  
& AT/FP**





**WOODS • PEACOCK**  
ENGINEERING CONSULTANTS

**Naval Health Clinic, Bldg. 1370 HVAC Replacement  
Naval Air Station, Patuxent River, MD**

**M/E/P  
Renovation**















**CORY SAUER, PE**  
Senior Principal  
[cory@woodspeacock.com](mailto:cory@woodspeacock.com)



**SETH TAKOCH**  
Associate  
[seth@woodspeacock.com](mailto:seth@woodspeacock.com)



**LIZBETH MELENDEZ-PEREZ**  
Marketing Manager  
[lizabeth@woodspeacock.com](mailto:lizabeth@woodspeacock.com)



**VISIT**  
[www.woodspeacock.com](http://www.woodspeacock.com)

Society of  
**SAME**  
American Military Engineers



**NoVA**  
Northern Virginia Post



Photo By Duane Lempke



# Mott MacDonald

**Federal Program**

**For the SAME NOVA Post**

October 6, 2022



# Introduction to Mott MacDonald

We work in

**160**

countries

**170**

permanent  
offices in over  
50 countries

**16k**

staff globally

**\$2.2**

billion revenue  
globally

Over

**150**

years'  
heritage

**60**

offices in  
North America

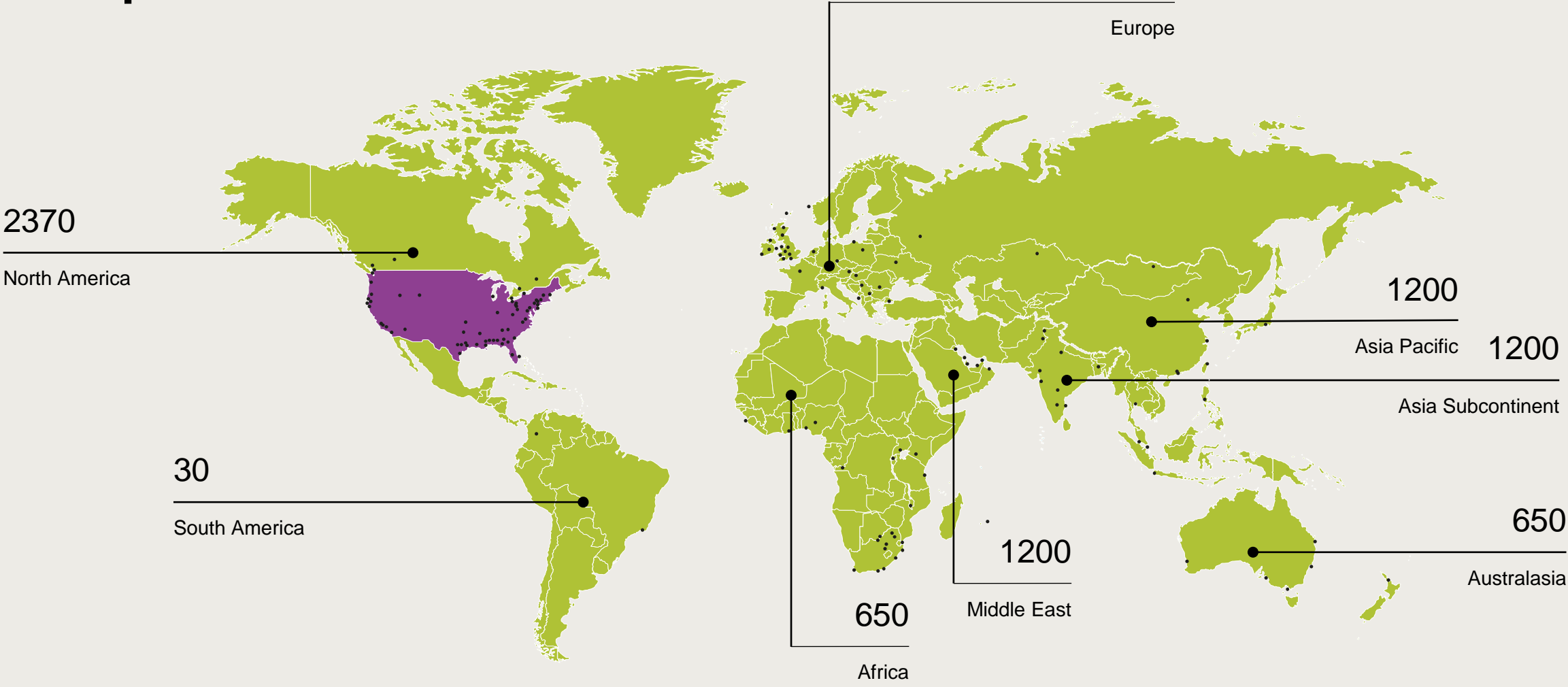
**2300**

staff in North  
America

**\$600**

million revenue  
in North America

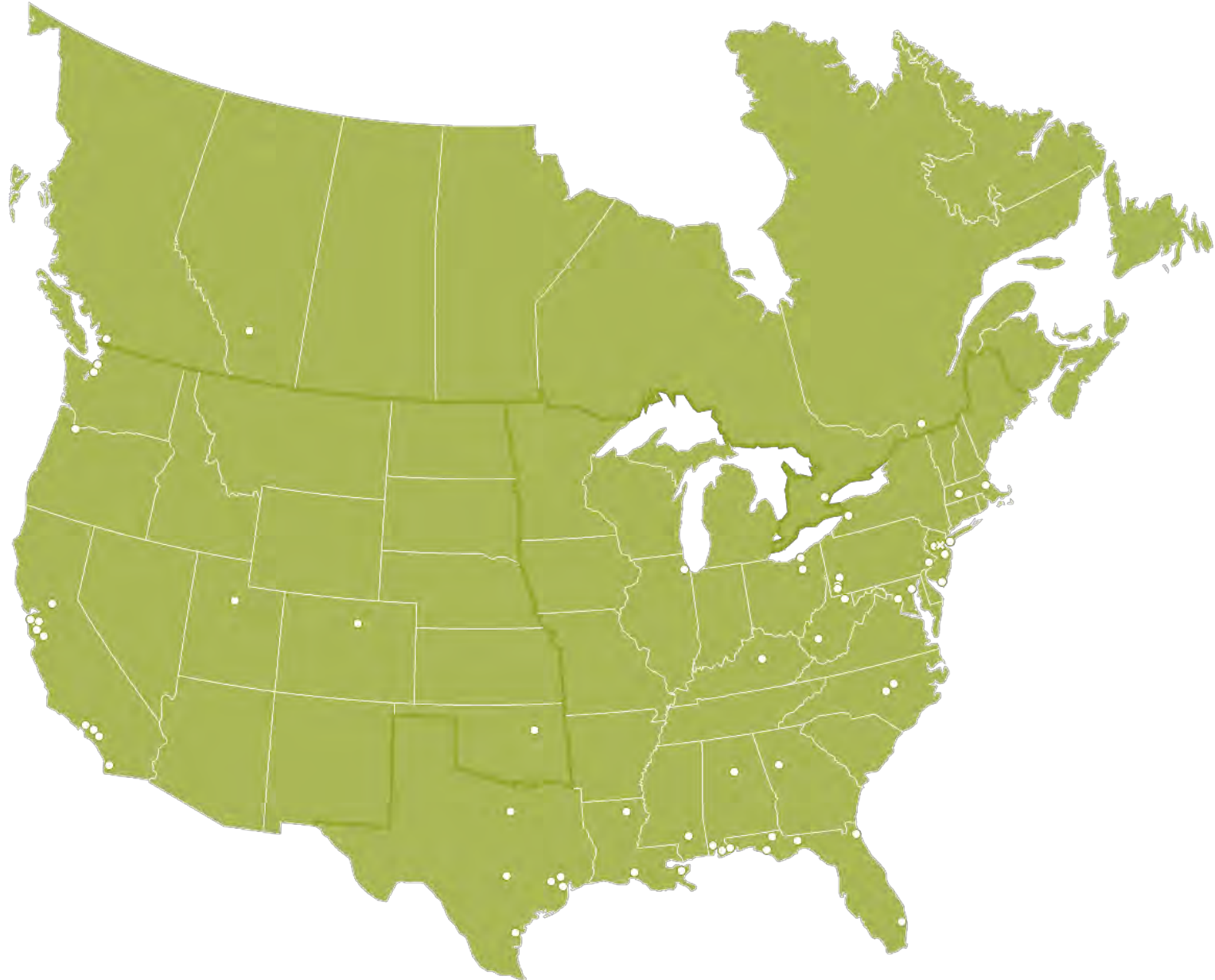
# Principal offices and staff





# NASA geographic units and offices

**2300** total staff  
**60** offices



# Rising ENR 2021 rankings

**ENR THE TOP 150 GLOBAL DESIGN FIRMS** The Top 150 List

RANK	2020 RANK	FIRM	FIRM TYPE	2020 REVENUE		GENERAL BUILDING	MANUFACTURING	POWER	WATER SUPPLY	SEWER / WASTE	INDUS. / PETROLEUM	TRANSPORTATION	HAZARDOUS WASTE	TELECOM
				TOTAL \$ MIL.	INT'L \$ MIL.									
1		POWER CONSTRUCTION CORP. OF CHINA, Beijing, China <sup>1</sup>	EC	13,291.8	1,296.8	10	0	99	0	0	0	0	0	0
2		JACOBS, Dallas, Texas, U.S.A. <sup>1</sup>	EAC	10,187.9	2,609.0	8	7	3	8	7	11	28	22	8
3		CHINA ENERGY ENGINEERING CORP. LTD., Beijing, China <sup>1</sup>	EC	9,252.8	631.5	2	0	96	0	0	1	1	0	0
4		AECOM, Los Angeles, Calif., U.S.A.	EA	7,862.2	3,690.4	21	0	4	13	4	1	42	14	1
5		CHINA COMMUNICATIONS CONSTRUCTION GROUP LTD., Beijing, China <sup>1</sup>	EA	6,096.6	452.8	0	0	0	0	0	0	100	0	0
6		WSP GLOBAL INC., Montreal, Quebec, Canada <sup>1</sup>	E	5,511.4	4,707.9	23	0	0	2	1	3	50	5	1
7		WORLEYPARSONS, North Sydney, Australia	EC	4,618.0	3,948.1	0	0	0	1	0	80	1	0	0
8		SGS-LAVALIN INC., Montreal, Quebec, Canada <sup>1</sup>	E	4,046.0	3,484.1	16	0	11	5	0	12	37	9	0
9		WOOD, Aberdeen, Scotland, U.K.	EC	3,801.7	3,297.2	2	4	4	2	2	20	6	6	0
10		FLUOR, Irving, Texas, U.S.A. <sup>1</sup>	EC	3,681.1	2,682.4	0	0	0	0	0	80	9	10	0
11		ARCADIS NV, Eindhoven, Netherlands <sup>1</sup>	E	3,747.0	2,436.0	29	5	7	3	0	9	13	2	1
12		STANTEC INC., Edmonton, Alberta, Canada <sup>1</sup>	E	3,264.4	2,441.8	26	1	7	13	12	9	24	2	1
13		TETRA TECH INC., Pasadena, Calif., U.S.A.	E	2,889.0	840.0	9	1	8	43	12	2	5	20	0
14		CHINA RAILWAY CONSTRUCTION CORP. LTD., Beijing, China <sup>1</sup>	EA	2,676.0	127.0	28	0	0	1	0	0	69	0	0
15		CHINA RAILWAY GROUP LTD., Beijing, China <sup>1</sup>	EC	2,421.8	75.1	43	0	0	0	0	0	57	0	0
16		HDR, Overland Park, U.S.A. <sup>1</sup>	EA	2,360.0	312.8	21	0	10	10	11	2	41	1	2
17		SWECO, Stockholm, Sweden	EA	2,268.0	1,480.0	36	2	9	4	3	10	33	0	0
18		MOTT MACDONALD, Crewe, England, U.K. <sup>1</sup>	E	2,240.2	1,287.3	13	0	8	9	13	7	44	0	0



#29 Top 500 Design Firms



**Advisory**



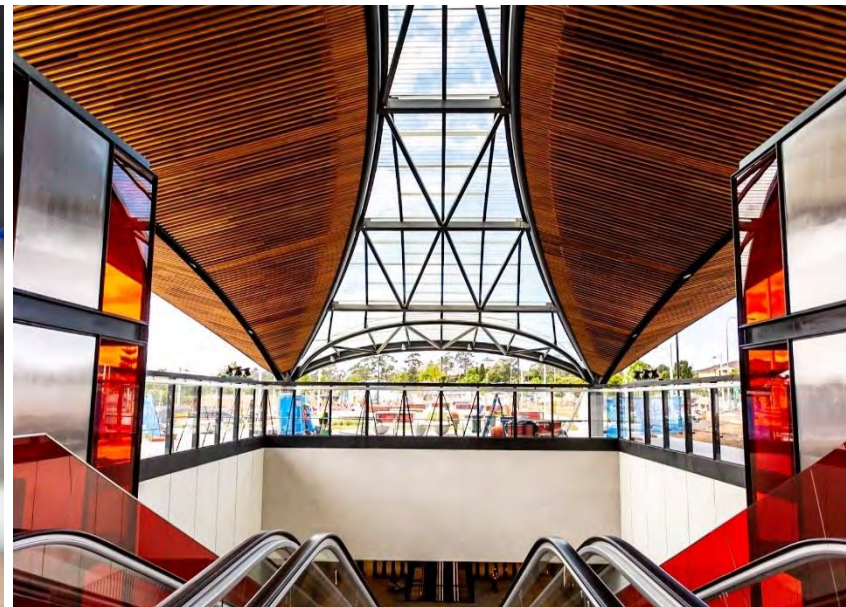
**Built environment**



**Energy**



**International development**



**Transportation**



**Water**

# North American core practices – depth of expertise and experience



Advisory and social outcomes



Buildings



Aviation



Ports



Coastal



Environment



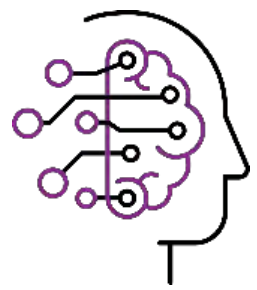
Geotechnical



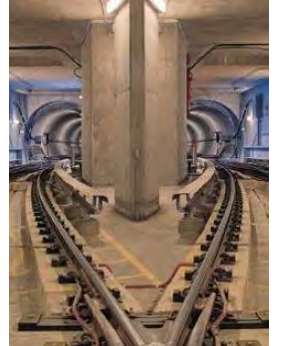
Bridge and Civil Structures



Highway



Digital design and delivery



Rail and transit



Tunnels



Power generation, renewable and power delivery



Oil and gas



Water and Wastewater



Transportation planning



We **open** opportunities  
with **connected** thinking.





**F-35 Beddown Program, Royal Air Force Lakenheath, UK**

# Sandy Hook Resiliency Repairs (D-B)

Fort Hancock, Gateway National  
Recreation Area, Sandy Hook, NJ





**Fragment Simulation Laboratory, ERDC Vicksburg, MS**





**Guantanamo Bay Beach Repairs, NAVFAC**



**Replace Ground Vehicle Fueling Facility (D-B)  
Arnold Air Force Base, TN**



**Aircraft Apron Repair, Atlantic City Air National Guard Base, NJ**



**Thank you**

Society of  
**SAME**  
American Military Engineers



**NoVA**  
Northern Virginia Post



Photo By Duane Lempke



*Prepared for:*

**SAME**  
Northern Virginia Post

*Prepared by:*

**Chris Kerlish,  
Vice President**

6 October 2022



# EA Company Overview

- Founded in 1973
- Headquartered in Hunt Valley, Maryland
  - ◆ 27 offices nationwide – 630+ employees
- Full-service environmental, engineering, management, and technology consulting firm
- \$140M+ annual sales
- Top 200 *ENR* Environmental Firm

131  
2022  
**ENR**  
TOP 500  
DESIGN FIRMS

75  
2022  
**ENR**  
TOP 200  
ENVIRONMENTAL  
FIRMS

15  
2022  
**ENR**  
TOP 30  
ALL  
ENVIRONMENTAL  
FIRMS

- 100% employee-owned, public benefit corporation (PBC)



# EA Experience

Leading provider of environmental planning; science and engineering; compliance; natural and cultural resources; restoration; and infrastructure management solutions.

**700+** Projects Annually

**\$2.5B** Project Revenue

**Sectors Served**

- ◆ Federal
- ◆ State
- ◆ Municipal
- ◆ Air Carrier & Airport
- ◆ Rail
- ◆ Marine Transport
- ◆ Food & Beverage
- ◆ Utility & Energy
- ◆ Pharmaceutical
- ◆ Aggregate & Mining
- ◆ Agriculture
- ◆ Chemical
- ◆ Heavy Industry
- ◆ Insurance

## Offices Nationwide





# Leader in Sustainable Business Practices

- Largest US-based ESOP/Benefit Corporation in the environmental consultancy (A/E) space
- We recognize our role in our clients' value chain
  - ◆ Annual, transparent reporting on public benefits and sustainability, including carbon footprint
  - ◆ Voluntary commitment to GRI Standards: Core + SASB
  - ◆ *EcoVadis* 3rd party Corporate Social Responsibility (CSR) reviews
- Nationally recognized, award-winning CSR Program
  - ◆ *EcoVadis* 2019 Best Performer – North America
  - ◆ “Best of the Best” in *Fifty by Fifty's* Mission-Led Employee-Owned Firms report
  - ◆ Multiple *Environmental Business Journal* Awards
  - ◆ State-recognition – Maryland Green Registry



# Services

Addressing complex client challenges

- Environmental Management & Sustainability
- Health & Safety/Industrial Hygiene
- Infrastructure Engineering
- Climate Change/Resilience
- Site Characterization & Remediation
- Technology
- Laboratory Services
  - ◆ Ecotoxicology
  - ◆ Industrial Wastewater
  - ◆ Aquatic Biology
- Solid Waste Management



Society of  
**SAME**  
American Military Engineers



**NoVA**  
Northern Virginia Post



Photo By Duane Lempke



QTS Group LLC  
EHS capabilities

Presented by  
Danaila Paspalanova, CHMM

NAICS code: 541620



## 1. Industrial Hygiene/Occupational health

- QTS Group specializes in controlling airborne health hazards such as toxic dusts; fumes; mists; vapors; gases; as well as minimizing or eliminating physical hazards such as noise, ionizing radiation, and ergonomic hazards.
- Health and Safety for Hazardous Waste Remediation Projects, CERCLA and RCRA Remediation Support.
- Risk Exposure Assessments - Sampling Plans Development, Personal Air Monitoring for Silica, Hexavalent Chromium, Arsenic, Heavy Metals, Radionuclides; Welding Fumes
- Ecological and Human Risk Assessments for PCBs, polychlorinated dioxins and furans, PAHs, PFAS) chlorinated solvents, arsenic, lead, hexavalent chromium and other metals

## 2. Safety support

- Development and implementation of Site-Specific Health and Safety Plans.
- Development of Perimeter Air Monitoring Plans and Dust Mitigation Plans.
- On- site Safety Officers
- Job Hazard Analyses, Corporate Health and Safety Programs, and Standard Operating Procedures.
- Our safety team is highly skilled, 40h OSHA Hazwoper trained; M385-1-1; Construction Quality Management certifications.



### 3. Toxicologist support

- Toxicological evaluations on human and ecological risk
- Develop and perform Perimeter air monitoring to protect sensitive receptors and the community; Public relations and management;
- Ecological and Human Risk Assessments for PCBs, polychlorinated dioxins and furans, PAHs, PFAS) chlorinated solvents, arsenic, lead, hexavalent chromium and other metals.
- Evaluation and Development of reference doses and concentrations;
- Natural resource damage claims and litigation support, product liability, class action claims.



## 4. Environmental Management, Planning and Restoration

- Environmental Compliance
- Site Investigation; Phase I & II Environmental Site Assessments
- Environmental, Health & Safety Compliance Auditing
- National Environmental Policy Act (NEPA)
- Resource Conservation & Recovery Act (RCRA)
- Risk Assessment & Toxicology
- Spill Prevention, Control, and Countermeasure (SPCC) Planning





## QTS Group differentiators

- Our personnel are experts in understanding local, state, and federal regulations, including OSHA and NIOSH, and multiple other agencies.
- Certifications include CIH, CSP, CHMM, PMP, PhD, DABT Toxicologist.
- Fast and Flexible project scheduling and deployment.
- We provide an outstanding customer experience, everyday excellence, and long-lasting relationships.



## QUESTIONS



## THANK YOU

Danaila Paspalanova

[DPASPALANOVA@QTSGRP.COM](mailto:DPASPALANOVA@QTSGRP.COM)

917-376-6271

[www.qtsgrp.com](http://www.qtsgrp.com)



Society of  
**SAME**  
American Military Engineers



**NoVA**  
Northern Virginia Post



Photo By Duane Lempke



**IMEG Corp.**  
FIRM OVERVIEW/INTRODUCTION



SAME NOVA POST - B2B  
OCTOBER 6, 2022

**102** COLLECTIVE YEARS

**2,000** EMPLOYEES

**U.S. BASED** & EMPLOYEE-OWNED

**70** LOCATIONS

**500+** LICENSED ENGINEERS

**\$276M** IN ANNUAL REVENUE

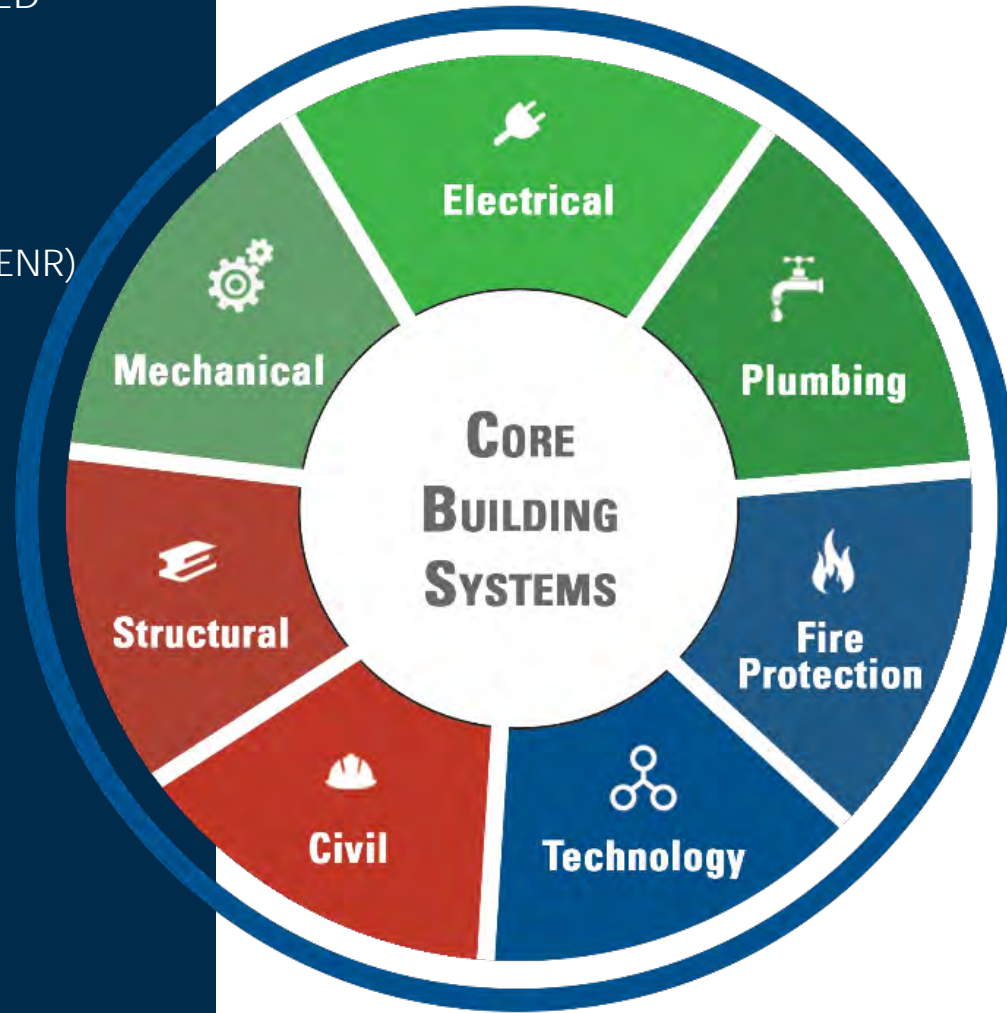
**#71 / TOP 500** DESIGN FIRM (ENR)

**TOP 5**

**ENGINEERING FIRM IN U.S.**

(Building Design + Construction 2021)

**IMEG At-A-Glance**



**BUILDING DESIGN: ENGINEERING & PLANNING**

- Structural
- Mechanical
- Electrical
- Plumbing/Piping
- Fire Protection
- Technology Design
- Automation & Controls
- Security Design & Engineering
- Acoustics & Noise Control
- Architectural Lighting
- Medical Equipment Planning
- Building Performance Analysis

**COMMISSIONING**

**CONSULTING & ADVISORY SERVICES**

- Intelligent Buildings
- Technology Consulting
- Healthcare Information Technology
- Protective Services Consulting
- Forensic Consulting & Investigations
- Grant Writing

**INFRASTRUCTURE: DESIGN & PLANNING**

- Civil Engineering
- Municipal Engineering
- Land Development & Surveying
- Environmental Services
- Landscape Architecture
- Materials Testing
- Construction Observation

**PROCESS ENGINEERING**

- Automation & Controls
- Chemical Process
- Bulk Processing



# Office Locations



# Top 20

FEDERAL GOVERNMENT SECTOR  
ENGINEERING FIRM IN U.S.

- 20+ Year History Supporting Federal Projects
- Worked for the **Military Agencies** Nationwide as well as **Federal Healthcare** and **Civilian Agencies**
- 3,800+ Projects Completed
- **DB and DBB Experience** on projects of varying size and complexity

Federal Portfolio  
Overview



FBI Central Records Complex – Winchester, VA



USACE Savannah District Youngstown ARS – B541 Vehicle Maintenance Renovation (OH)



Hanscom AFB – Building 1108 DB Renovation (MA)



USMC Air Station New River – MV22 Hangar (NC)



National Guard – New Readiness Center & AASF (IL)



DHS – New Land Port of Entry (NM)

# Military Project Highlights







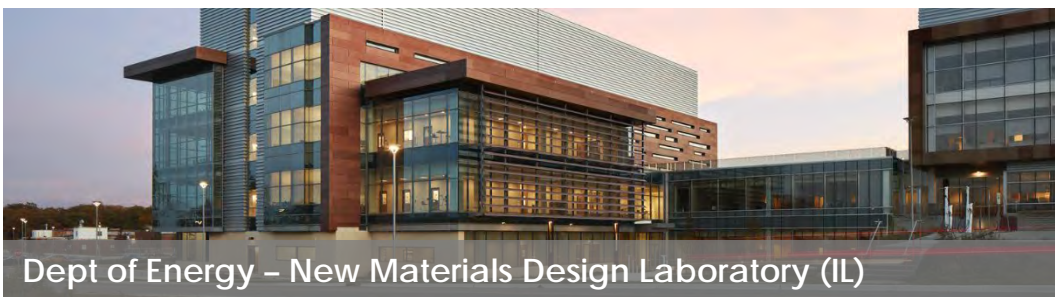
GSA – Frank E. Moss Historic Courthouse Renovation (UT)



National Park Service – St. Louis Arch Museum and Visitor Center Expansion & Addition (MO)



VA– New Community Based Outpatient Clinic (SC)



Dept of Energy – New Materials Design Laboratory (IL)



USACE New England District – VA West Haven New Surgical Clinical Tower Building (CT)

# Additional Federal Project Highlights



200+ LEED AP's

400+ TOTAL 3<sup>rd</sup> PARTY  
PROJECTS CERTIFIED

32 LEED PLATINUM  
certified/pursuing

125 LEED GOLD  
certified/pursuing

9 WELL BUILDING  
certified/pursuing

11 DESIGNED FOR  
NET ZERO ENERGY

25 ENERGY STAR

# Sustainable Design



**MEP  
2040**  
Committing to Zero

**SE2050**  
COMMITTING TO ZERO

ADOPTER  
architecture  
**2030**  
CHALLENGE

Hyatt Hotels Corporate Headquarters | 240,000-sf Build-out – LEED Platinum & WELL Certification



## PARTNERSHIPS AND RELATIONSHIPS



Society of  
**SAME**  
American Military Engineers



**NoVA**  
Northern Virginia Post



Photo By Duane Lempke



# **SAME NOVA Post Business-to-Business (B2B) Event**

**6 October 2021**

**Jilian Breeden, P.E., LEED AP**

**Engage Federal LLC**

[www.engagefederal.com](http://www.engagefederal.com)

Woman-Owned Small Business (WOSB)  
EDWOSB Certification Pending

Reston, VA

Founded in 2019

EUI: FKJFBTZEBXB7

DUNS: 117004335 | CAGE: 89G82

## Planning and Programming Services:

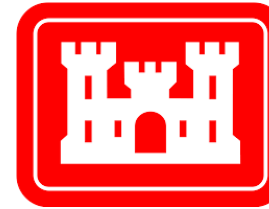
- Military Construction (MILCON) & SRM DD Form 1391s
- GSA Prospectus
- Scope & requirements development
- Budgetary cost estimates
- Life-cycle economic analyses
- Space use plans & studies
- Concept & feasibility studies
  
- Training (e.g., DD Form 1391, MILCON trends, PPBE process)
- Federal business development (BD) consulting  
(SF330 proposal review, short list interview prep, BD strategic planning)





## Past Federal Experience:

- Navy
- USMC
- Army
- Air Force
- WHS
- DOT
- GSA
- FBI
- NOAA
- AOC
- EPA



**Geography:** CONUS; willing for OCONUS

**Personnel Clearances:** Secret

**Programs/Systems Access:** Army's PAX Processor, Navy's EPG, ECONPACK

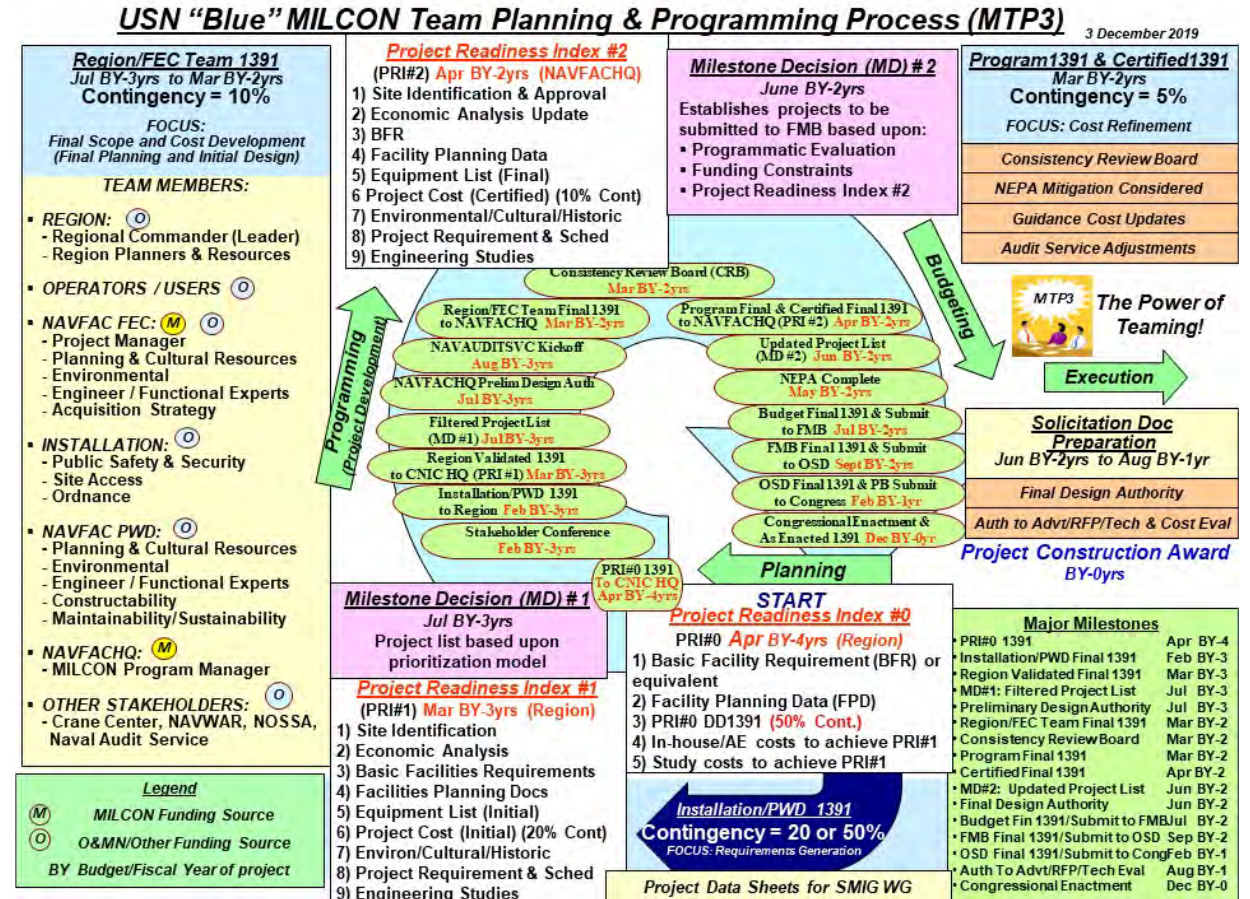
## RFP language to think of Engage:

- DoD
- Planning and programming
- Plans and studies
- Requirements development
- DD Form 1391 or MILCON
- Economic analysis or ECONPACK
- PAX 1391 Processor or EPG

## Why include Engage?

Proper planning leads to executable projects!

Leverage an expert during a challenging and volatile time.





## Recent Projects

**NAVFAC SW – Earthquake Recovery  
(MILCON & SRM Projects),  
NAWS China Lake, CA**



**GSA – NAVAIR Aircraft RDT&E Hanger  
MILCON Planning,  
NAS Patuxent River, MD**



**NAVSEA MARMC – Facilities Planning  
(MILCON & SRM Projects),  
Naval Station Norfolk, VA**



**USACE Mobile – Planning and  
Programming Support,  
Anniston Army Depot, AL**



**Jilian Breeden, P.E., LEED AP**

[Jbreeden@engagefederal.com](mailto:Jbreeden@engagefederal.com)

703.638.8684

[www.engagefederal.com](http://www.engagefederal.com)

Society of  
**SAME**  
American Military Engineers



**NoVA**  
Northern Virginia Post



Photo By Duane Lempke



For

**SAME NoVA Post Business-to-Business (B2B)  
Engagement Presentation**

Presented by:

**Nilu Mirshahi**

October 6<sup>th</sup>, 2022



WHO WE ARE

With a mission to understand, innovate, partner and deliver, EXP provides engineering, architecture, design and consulting services to the world's built and natural environments.



**Aviation**

**Bridges**

**Civic**

**Commercial + Retail**

**Education**

**Energy**

**Entertainment + Sports**

**Federal**

**Healthcare**

**Highways + Roads**

**Hospitality + Gaming**

**Industrial**

**Justice + Correctional**

**Land Development**

**Mining**

**Mission Critical**

**Oil, Gas + Chemicals**

**Pipelines**

**Ports + Marine**

**Rail + Transit**

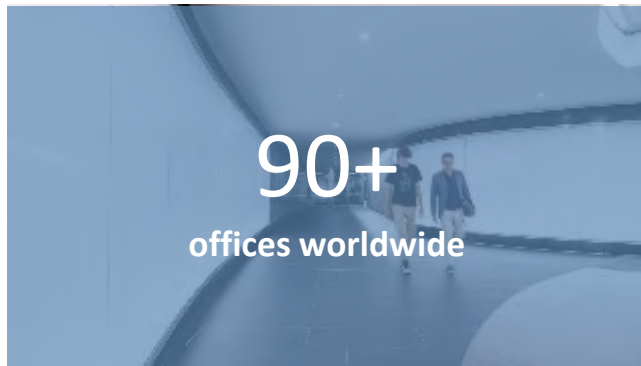
**Science + Technology**

**Water**





at a glance





exp. projects



US General Services Administration, Margaret Chase Smith Federal Building + U.S. Courthouse Modernization + Expansion, Bangor, ME



US General Services Administration, Charles F. Prevedel Federal Building, St. Louis, MO



US Postal Services, Milwaukee Processing Facility, Milwaukee, WI



OUR VISION + VALUES

**Delivering exponential possibilities for our clients, our employees and our communities.**

**Integrity**

**Passion**

**Accountability**

**Transparency**

**Diversity**

**Community + Sustainability**

# THANK YOU!



## JENNY BOWERS

SAME NoVA Post, President  
Mid-Atlantic Director | State and  
Federal Programs, EXP US Services

Mobile: 703-397-4878

Email: [jenny.bowers@exp.com](mailto:jenny.bowers@exp.com)



## JULIE SMILEY

SAME NoVA Post, Secretary  
Federal Programs Manager, EXP  
US Services

Mobile: 703-397-4878

Email: [julie.smiley@exp.com](mailto:julie.smiley@exp.com)



## NILU MIRSHAHI

SAME NoVA Post, Newsletter  
Editor-in-Chief  
Data Analyst, EXP US Services

Mobile: 703-397-4878

Email: [nilufar.mirshahi@exp.com](mailto:nilufar.mirshahi@exp.com)

## DC Office

1140 3<sup>rd</sup> Street, NE  
Suite 335  
Washington, DC

## MD Office

502 Washington Ave.  
Suite 501  
Towson, MD

## VA Office

3901 Westerre Parkway,  
Suite 210  
Richmond, VA





exp.com

Society of  
**SAME**  
American Military Engineers



**NoVA**  
Northern Virginia Post



Photo By Duane Lempke



**Sorba**  
ENGINEERING



# INFORMATION

**14**

years of federal  
experience

**17**

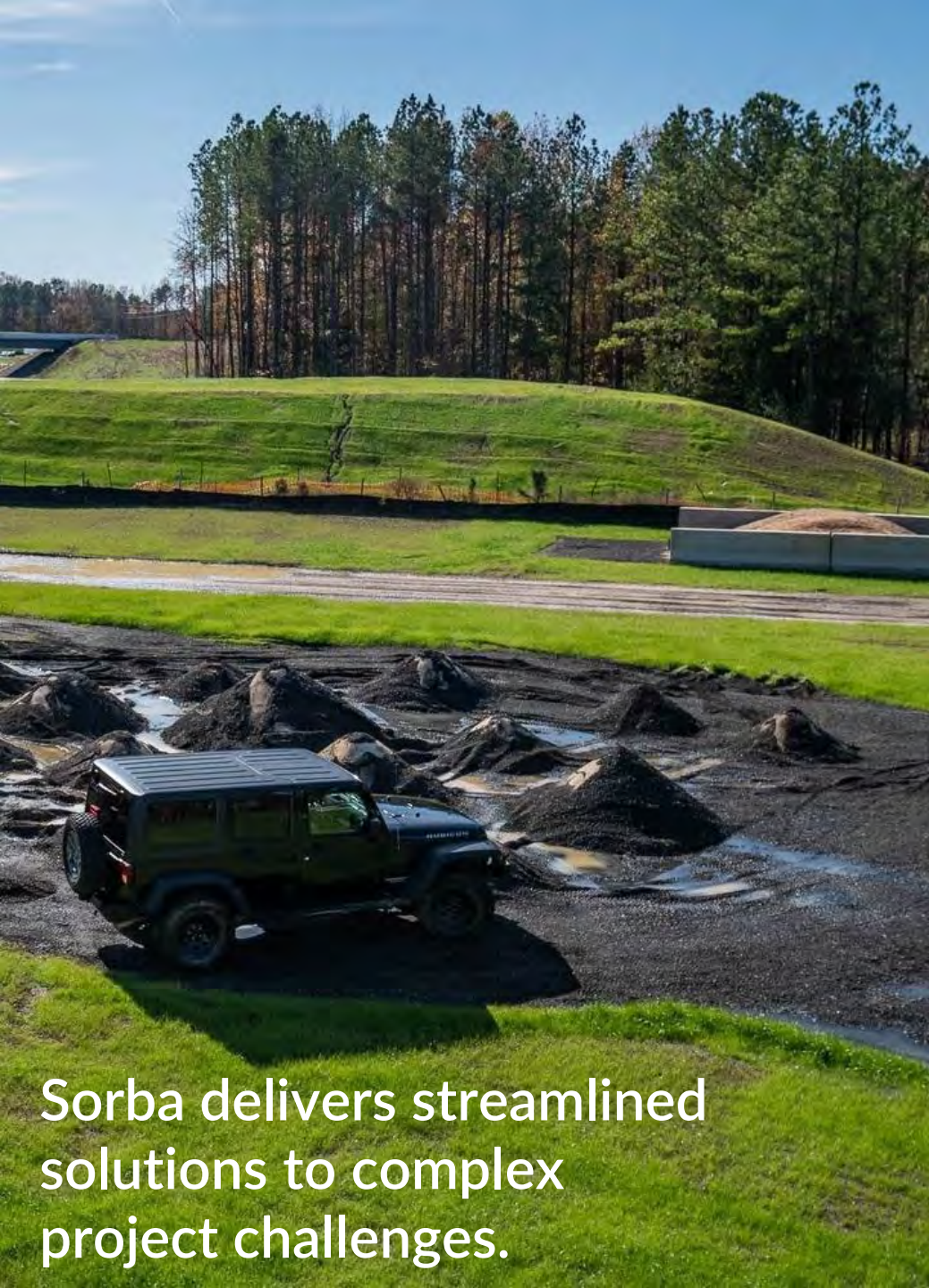
employees

**\$10B**

construction  
costs

**WOSB**

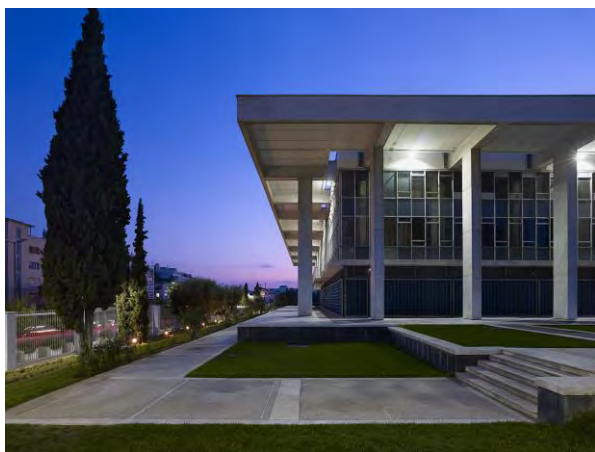
registered  
business



**Sorba delivers streamlined solutions to complex project challenges.**

## **Sorba is focused on addressing your site design and development needs.**

From feasibility studies to full construction documents, the Sorba team provides professional consultation services to clients in all areas of land development. This includes comprehensive site selection and planning, civil engineering and infrastructure design, stormwater management, and low-impact development. Sorba's knowledge of the jurisdictional entitlement and technical approval processes, both on the federal and local level, is key in expediting permit procurement.



**Federal**

AOC	GSA
BEP	NAVFAC
DOI	NIH
DOS	OBO
FBI	USACE





Society of  
**SAME**  
American Military Engineers



**NoVA**  
Northern Virginia Post



Photo By Duane Lempke



## ENGINEERING CONSULTING SERVICES

*“Setting the Standard for Service”*

**Robert Gudz, PE, Vice Pres, Dir of Govt Services**

**30+**

years serving  
our clients

**#68**

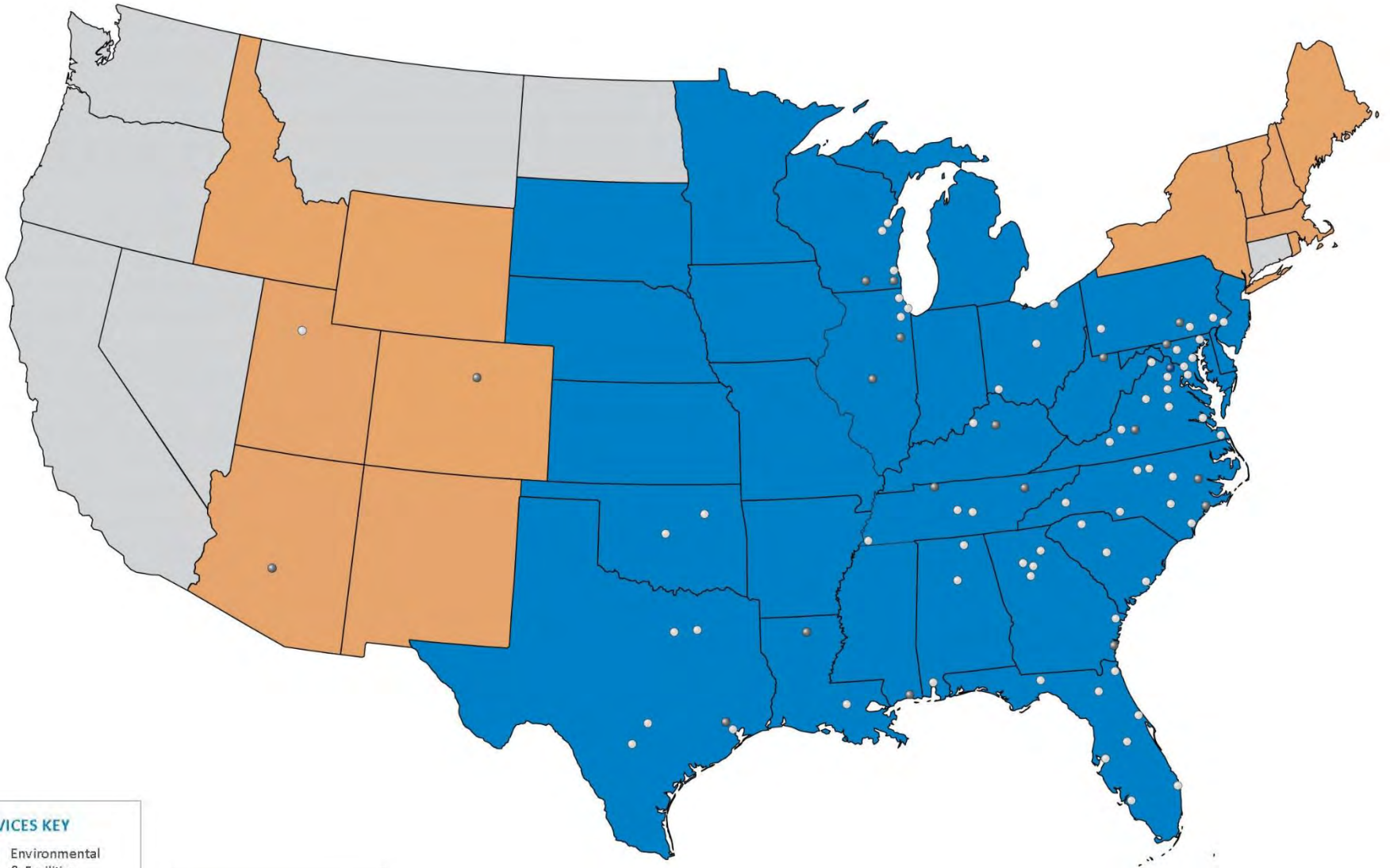
ENR Top 500  
Design Firms

**2,200**

employees

**80+**

offices



**SERVICES KEY**

- Environmental & Facilities
- Geotechnical, Environmental, Materials Testing & Facilities
- Geotechnical, Environmental & Facilities

**OFFICES KEY**

- Full Service Office
- Testing Services Only
- Corporate Headquarters



# CORE SERVICES PROVIDED

**Geotechnical**

**Construction Materials**

**Environmental**

**Facilities**





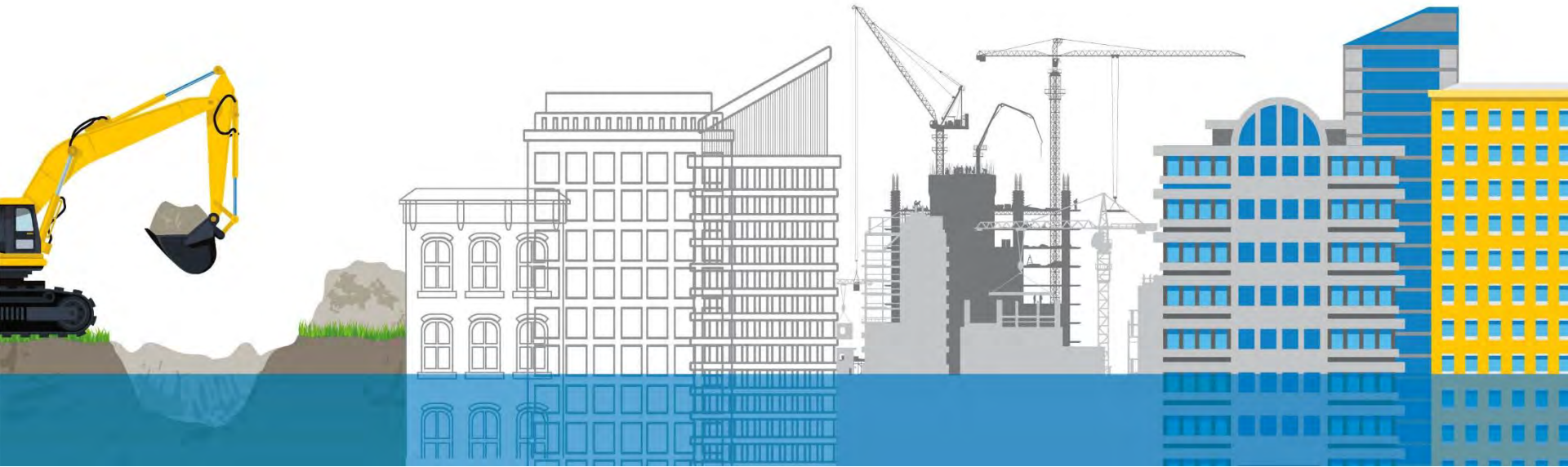
# EVERY STEP OF THE WAY

DUE DILIGENCE/  
PLANNING

DESIGN

CONSTRUCTION

OPERATIONS AND  
MAINTENANCE



## DUE DILIGENCE/ PLANNING

Phase I & II Environmental Site Assessments

Hazardous Materials Assessments

Wetlands and Endangered Species Assessments

Environmental Impact Screening Form (EISF) Coordination

Preliminary Geotechnical Studies

Pavement Asset Management

Property Condition Assessments

Preconstruction Surveys

Accessibility Compliance Surveys

Structural Forensics Studies

Building Envelope Commissioning

## DESIGN

Environmental Remedial Planning and Design

Environmental Assessments

Site Characterization Assessments

Groundwater Treatment System Design

National Pollutant Discharge Elimination System (NPDES) Local Water Discharge Permit

Geotechnical Studies

Geophysical Studies

Soil Remediation Design

GeoStructural Design

Third Party Plan Review

Document Peer Review

Structural Design

Building Envelope Design

## CONSTRUCTION

Abatement Monitoring

Excavation Monitoring for Environmental Compliance

Soil Cement Mix Design

Lime Stabilization Design

Full Depth Reclamation (FDR) Mix Design

Vibration Monitoring

Adjacent Structure Movement Monitoring

Concrete Mix Design

Construction Materials Testing

Special Inspections

Building Code Inspections

Load Testing of Anchors

Analysis of Low Strength Concrete

Bank Draw Reviews

Building Envelope Inspections

AAMA Window Testing

Forensic Investigations

WPS/PQR/WPQ

## OPERATIONS AND MAINTENANCE

Environmental Management Plans

Structural Inspection and Repair Design

Building Envelope Investigations

Fall Protection and Suspended Access Load Testing and Certification

Parking Structure Assessments

Groundwater Treatment System

NPDES Groundwater Sampling and Reporting

Facility Condition Assessments







## Phase I, II, and III Environmental Site Assessments

Preliminary Geotechnical Studies

Property Condition Assessments

Hazardous Materials Assessments

Wetlands & Endangered Species





PLANNING

DESIGN

CONSTRUCTION

COMMISSIONING

FACILITY  
MANAGEMENT

Environmental Remedial Action Planning  
Geotechnical and Geophysical Explorations  
Building Enclosure Design Consulting





Construction Materials Testing

Special Inspections

Building Code Inspections

Building Enclosure Monitoring

Vibration and Movement Monitoring

Environmental Remediation Monitoring





Post-Construction, Pre-Occupancy Indoor Air Quality Testing  
Building Enclosure Commissioning and Testing





PLANNING

DESIGN

CONSTRUCTION

COMMISSIONING

FACILITY  
MANAGEMENT

Roofing, Building Cladding and Waterproofing System Design and

Construction Monitoring

Structural Inspection and Repair Design

Property Condition Assessment

Fall Protection Testing and Certification

Environmental Management Plans



# MARKET SECTORS

COMMERCIAL

FINANCIAL

GOVERNMENT

HEALTHCARE

HOTEL & LEISURE

INDUSTRIAL

INSTITUTIONAL

INTERNATIONAL

RESIDENTIAL

RETAIL

TRANSPORTATION

UTILITIES

**For more information  
Please call or email:**



Robert Gudz, PE  
[rgudz@ecslimited.com](mailto:rgudz@ecslimited.com)  
202-494-1038





# SAME NoVA Post 7<sup>th</sup> Annual Business-to-Business (B2B) Engagement

National Museum of the U.S. Army at Fort Belvoir  
October 6, 2022

Photo By Duane Lempke





## SPECIAL THANKS TO OUR POST'S 7<sup>TH</sup> ANNUAL BUSINESS-TO-BUSINESS (B2B) ENGAGEMENT SPONSORS

