

# CDM Smith

June 2021

A global network of experts, delivering exceptional service and innovative solutions to make life better in smart and sustainable ways



# CDM Smith Background

- Global, full service consulting, engineering, construction, and operations firm
- 5,000+ employees; headquartered Boston, MA
- 125 Global Offices
- CDM Smith provides integrated solutions in:



- transportation
- water
- environment
- energy
- facilities

**Clients:** Federal, Municipal, Industrial, International



# Delivering integrated solutions that address our clients' infrastructure needs...

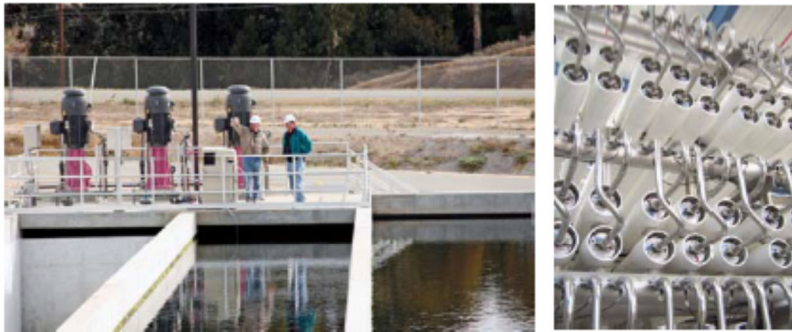
*Meeting economic, environmental and social demands in balanced and sustainable ways*



# ...in the water, environment, transportation, energy, and facilities sectors

## Water

- Drinking water supply, treatment, and distribution; wastewater conveyance, treatment, and reuse; flood control; and integrated water resources management



## Environment

- Solid and hazardous waste management; air quality; ecosystem restoration; climate change adaptation; soil and groundwater remediation; decontamination, decommissioning, and redevelopment



# ...in the water, environment, transportation, energy, and facilities sectors

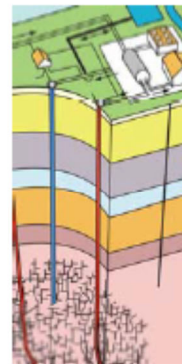
## Transportation

- Comprehensive planning, engineering, and environmental services for aviation, ports, heavy and light rail, roadways and bridges, and transportation tunnels



## Energy

- Integrated energy management services including audits, energy planning, energy conservation, energy recovery, carbon management / GHG reduction, permitting, and power generation engineering



# ...in the water, environment, transportation, energy, and facilities sectors

## Facilities

- Architectural and engineering services for administration buildings, schools, healthcare units, warehouses, transit stations, and post-disaster rehabilitation



## Geotechnics

- ...as well as one of Europe's leading geotechnical engineering consultancies, providing specialized engineering services for foundations, excavations, ground freezing, tunnels, subsurface structures, geothermal energy, and landfills



# CDM Constructors, Inc.

- Wholly-owned subsidiary
- Incorporated 1992
- Design Build Construction
- World Wide Execution - 550+ construction professionals worldwide
- Bonding:
  - \$1.4 billion aggregate
  - \$300 million single project
- Federal Customers
  - USACE
  - USAF
  - NAVFAC
  - DHS



**Andrews Air Force Base, Maryland – 380,000 SF office building, LEED certified**