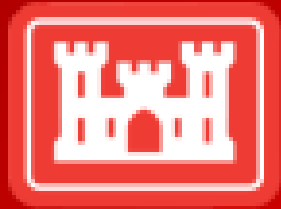




Department of Veterans Affairs U.S. Army Corps of Engineers



**Department of Veterans Affairs
VA Office of Construction & Facilities Management**

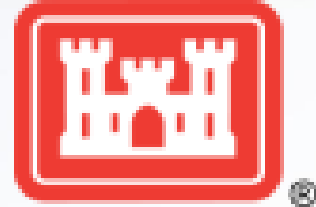
VA and USACE Major Construction Partnership



**Mr. Dennis Milsten, CCM
DVA Office of Construction &
Facilities Management
Associate Executive Director
Operations**



VA Mission & Vision



■ Mission

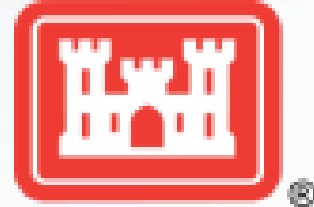
- To fulfill President Lincoln's promise “To care for him who shall have borne the battle, and for his widow, and his orphan” by serving and honoring the men and women who are America’s veterans.

■ Vision

- To provide veterans the world-class benefits and services they have earned - and to do so by adhering to the highest standards of compassion, commitment, excellence, professionalism, integrity, accountability, and stewardship



USACE Mission & Vision



■ Mission

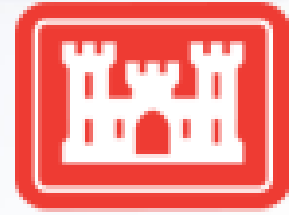
- Deliver vital engineering solutions, in collaboration with our partners, to secure our Nation, energize our economy, and reduce risk from disaster

■ Vision

- Engineering solutions for the Nation's toughest challenges



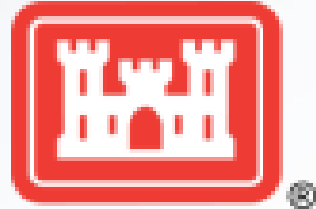
VA Services for Veterans



- Health Care
 - 9.11 Million Enrollees
 - 103 Million Outpatient Visits
 - 714,000 Inpatient Admissions
- Benefits
 - 3.95 Million Veterans received Disability Compensation
 - 1.09 Million Veterans received Education Support
 - 2.14 Million Active VA Home Loan Participants
- Memorial Benefits
 - 125,000 Internments in National Cemeteries
 - 3.4 Million Graves Maintained
 - 354,943 Headstones Provided for Veterans in Private Cemeteries



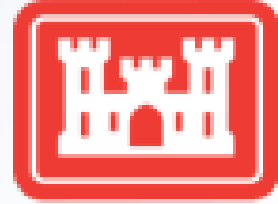
VA Facilities Inventory



- 6,100 Buildings
- 1,945 Leases
- 151,620,874 SF
- 37,381.08 Land acres
- Average age approaching 60 years



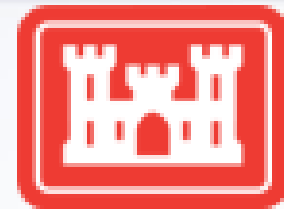
USACE Services to the Nation



- Direct reporting unit to U.S. Army
- 36,000 professionals
 - Army Civilian & Active Duty Military (over 700)
- Major Mission Areas
 - Military Missions, Civil Works, Research & Development, Contingency Operations, Geospatial, Real Estate, Interagency & International
- 9 Divisions, 42 Districts
 - U.S. & Overseas
- Regionally aligned; Globally Responsive
 - Engagement 132+ countries, Physical Presence 42 countries



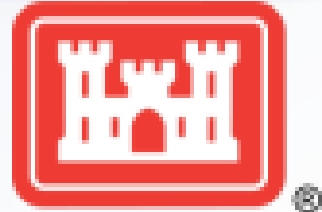
Background



- USACE and VA enjoy a long partnership
 - Veterans Administration’s post-World War II bed expansion program -1956
 - Built 67 new hospitals and remodeled others
 - Most remain active to this day
- National Cemetery Administration
- Minor Construction Program
 - Supporting DVA regional network; Veterans Integrated Service Network (VISN)
- Major Medical Construction (> \$100M)
- The Department of Veterans Affairs Expiring Authorities Act of 2015
 - USACE provide design and construction management services for all construction projects with a total estimated cost over \$100M
 - Full service program and project management to deliver cost effective, timely, high quality engineering and construction contract administration



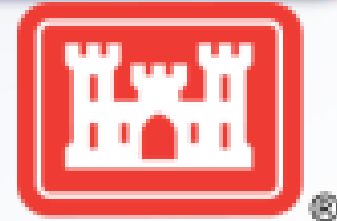
VA Major Construction Program



- 50 major construction projects valued at over \$13 billion.
- Orlando Medical Center open and treating Veterans.
- New Orleans Medical Center building turnover has commenced and first patient day targeted for December 2016.
- Denver Medical Center construction underway under USACE leadership. First building turnover scheduled for December 2016.
- VA working to deliver high quality facilities to serve our Veterans.



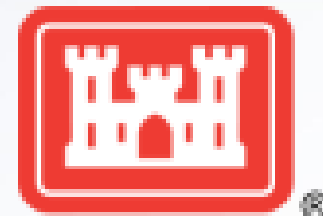
DVA CFM - USACE Partnership



- The Department of Veterans Affairs Expiring Authorities Act of 2015 requires the VA to enter into an agreement with a non-Department Federal Entity to provide design and construction management services for all construction projects with a total estimated cost over \$100 million (Super Construction Projects).
- VA has entered into a preliminary agreement with the US Army Corps of Engineers (USACE) for the fiscal year (FY) 15 and FY 16 construction programs to serve as construction agent for projects over \$100 Million.



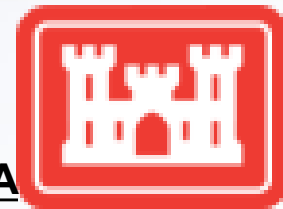
DVA CFM - USACE Partnership



- CFM identified 14 projects required by legislation to be executed by an outside agency
 - CFM partnered with USACE and all partnered projects are already under an Interagency Agreement with USACE.
 - The Louisville and Denver Projects have been accepted by USACE and Denver is already in construction.
- CFM and USACE developed Program Management Offices (PMO) to manage the operations of the partnership. CFM's PMO manages the overarching IAA agreement including the issuance of IAAs
- CFM and USACE Senior Executive Review Group (SERG) Meetings taking place biannually: 1st meeting held March 29, 2016; 2nd meeting scheduled for Nov. 9, 2016
- CFM and VHA need to focus on effectively managing their relationship in the new reality of NDAA 2016 and 38 U.S.C. 8103 (e).



USACE Support to Department of Veterans Affairs



Support to DVA CFM

Department of Veterans Affairs Program est. \$7B +

Support to VISN's & NCA

National Cemetery Administration

- Supporting NCA's 10 yr capital plan 10 ongoing projects
- PA Value: \$49.6M
- Includes gravesite expansion and cemetery improvements at National Memorial Cemetery of Arizona, Quantico National Cemetery and Dallas-Fort Worth National Cemetery

Minor Construction and Non-Recurring Maintenance for VISN's

- Supporting work at Medical Centers
- FY15 Execution: \$135M

New operating rooms at the Grand Junction Department of Veterans Affairs Medical Center.

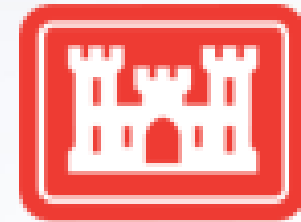


New Bedford Community-Based Outpatient Clinic

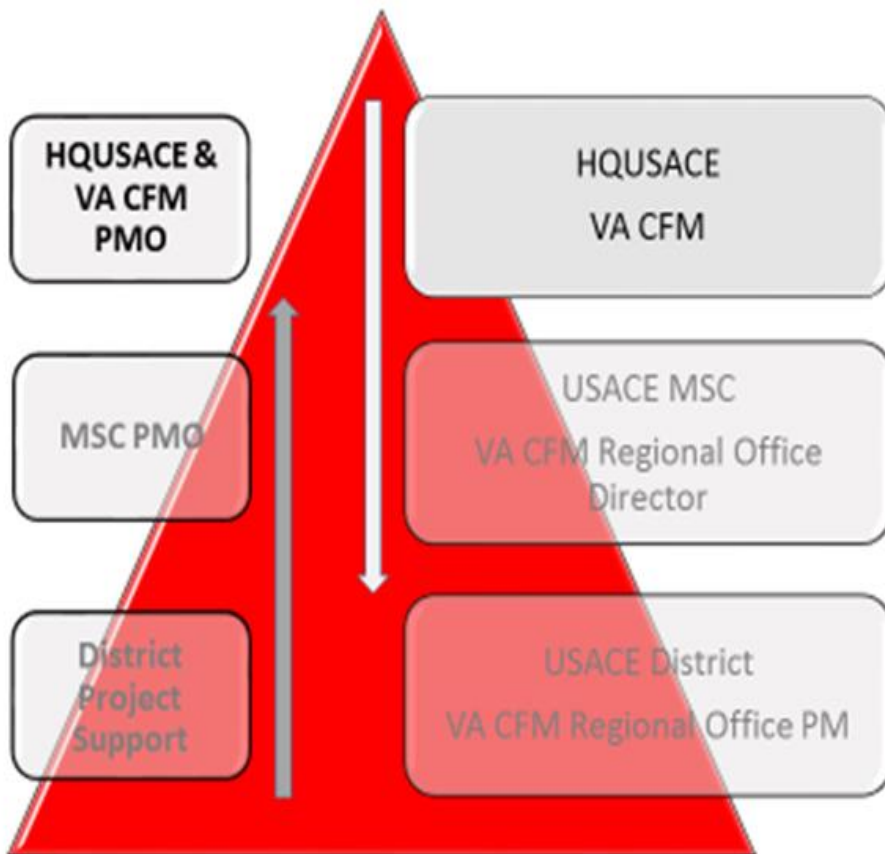
<u>MSC</u>	<u>Location</u>		<u>Description</u>
NWD	Portland	OR	Specialty Care Bldg, Seismic, Parking, Energy Plant
LRD	Louisville	KY	New Medical Campus and Medical Center
NWD	American Lake	WA	Renovations for Office Space, Seismic Corrections, Outpatient Med Facility
SPD	San Francisco	CA	Research/VET Med Unit, Parking, Seismic, Renovation
SPD	West Los Angeles	CA	Construct New Bed Tower, Parking, Expand Energy Plant, Seismic Corrections and Renovation
SPD	West Los Angeles	CA	Seismic Correction - 12 Buildings
SPD	Long Beach	CA	Mental Health Clinic, Community Living Center, Power Plant, Parking, Seismic
LRD	Canandaigua	NY	Outpatient Clinic, CLC, Chiller Plant, Emergency Power
SPD	Alameda	CA	Outpatient Clinic, Columbarium, Parking
SPD	San Diego	CA	Spinal Cord Injury, CLC, Parking, Seismic Corrections
SPD	Livermore	CA	CBOC, CLC, CUP, Specialty Procedure Center, Engineering/Logistics Bldg, Livermore Campus closure
SPD	Reno	NV	Upgrade Seismic, Life Safety, Infrastructure; Demolition/Construction to Expand Clinical Svcs
SAD	Tampa	FL	New Bed Tower, Parking, Access Roads, Demolition
NWD	Aurora	CO	New Medical Center



Senior Executive Review Group



Governance Structure for DVA CFM Majors Program

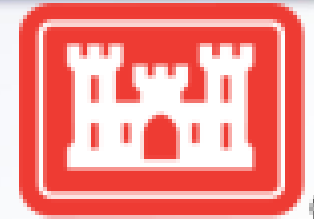


HQUSACE Senior Executive Review Group (SERG)

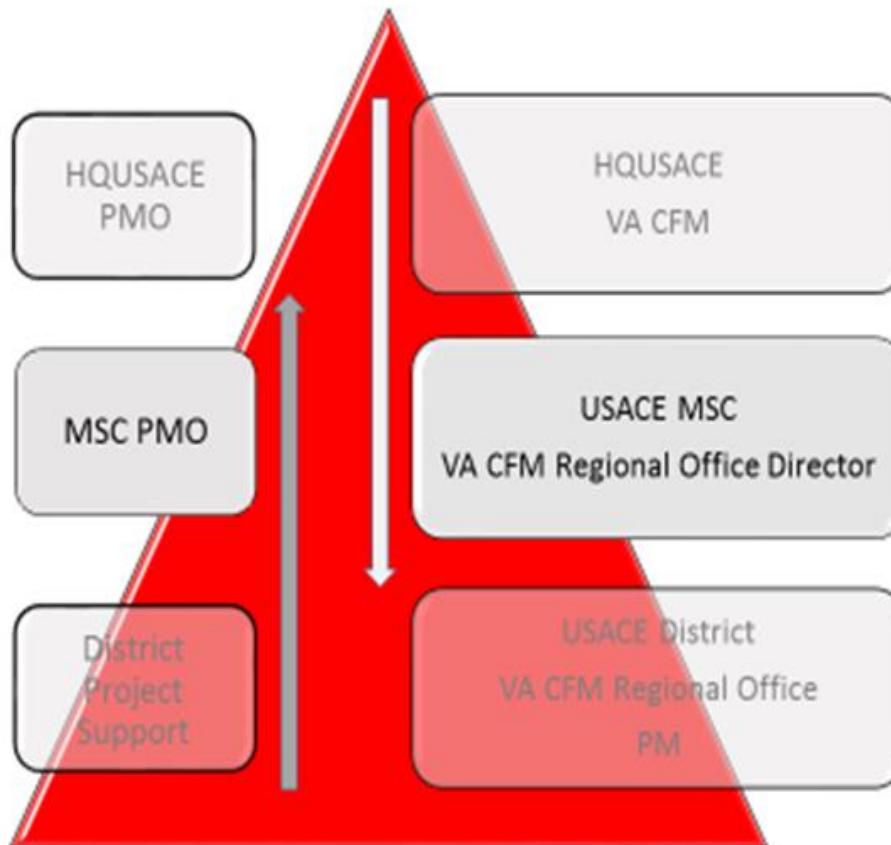
- Held Quarterly
- Members to Include
 - USACE - Director of Military Programs, SES
 - USACE - Chief International & Interagency Services Division, SES
 - USACE - Chief Programs Integration Division, SES
 - USACE - Chief Engineering and Construction, SES
 - DVA CFM - Executive Director CFM, SES
 - DVA CFM - Associate Executive Director Operations CFM, SES



MSC Senior Executive Board



Governance Structure for DVA CFM Majors Program



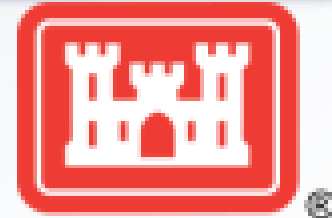
MSC Senior Executive Board (SEB)

Chaired by the MSC Senior Project Executive SES

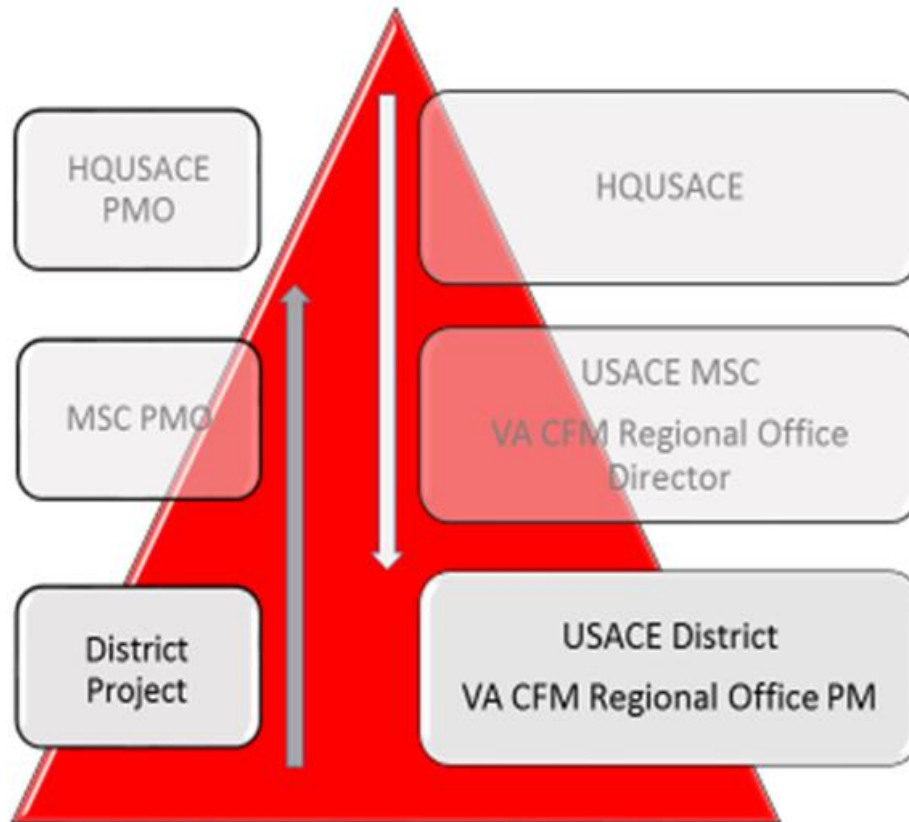
- Composed of Senior Leaders from all stakeholders
 - USACE - MSC Senior Project Executive SES
 - USACE - MSC MID Chief
 - USACE - MSC BTM Chief
 - DVA CFM - Regional Director
 - DVA CFM - Planning Director
 - VA Representation from the VHA, VAMC, VISN
 - DOR/Contractor
- Advisors to the SEB include
 - HQUSACE Senior Leadership
 - National Program Manager
 - HQ E&C Senior Engineers
 - CFM Consulting Support Services



Executive Leadership Team



Governance Structure for DVA CFM Majors Program

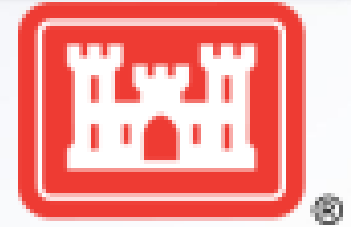


Executive Leadership Team (ELT)

- Members to include
 - District senior leadership
 - DOR/Contractor
 - CFM Regional Project Manager
 - CFM Regional Director Project Delivery
- Chaired by the District Commander or the Deputy District Engineer for Programs and Project Management (DPM)
- Addresses issues that immediately rise above the day to day

Project Leadership Teams PLT

- Composed of members of the Project Delivery Team and their supporting functional areas.
 - Project Manager
 - DOR/Contractor
 - Technical Lead
 - Other functional areas
 - CFM Project Officer
- Day to day project level tasks are managed at this level



Questions