

George Mason University

GMU/CEI and SAME Joint Annual Meeting

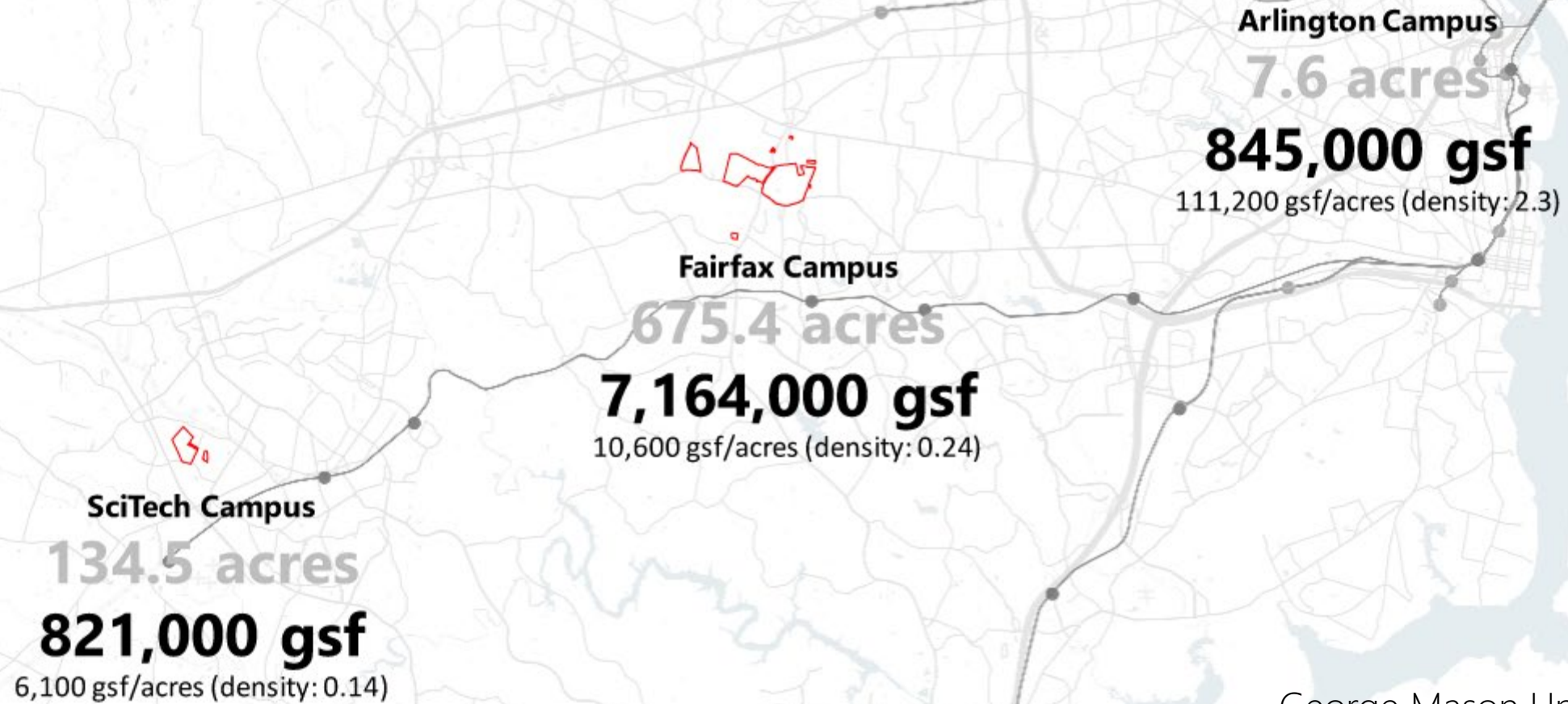




George Mason University

General Information

Campus gross square footage



FAIRFAX

32K students


6.4 Million GSF



10K hours in classrooms per week



HIGH usage of specialized instructional spaces


6K residential beds


49 years campus age


ARLINGTON


2K students


800K GSF



900 hours in classrooms per week


42 years campus age



SCITECH

2K students


650K GSF


600 hours in classrooms per week


LIGHT usage of specialized instructional spaces

200 residential beds


24 years campus age




George Mason University

About Facilities PD&C

George Mason Facilities Planning, Design, & Construction

WHO WE ARE

- Planning, Design, and Construction is a team of architects, engineers, project managers, and inspectors. We manage the full life-cycle of a variety of projects ranging from wayfinding signage to new buildings. In addition, we oversee campus master planning, long range utility planning, architectural standards, space standards and management guidelines, and campus art standards.

18
Full-Time Staff



WHAT WE DO

- Code Compliance
- Environmental Engineering
- Interior Design
- Move Coordination
- Project Inspections
- Project Management
- Signage and Graphics



207
Active
Projects

DESIGNING FOR THE PRESENT

The overall appearance of campus, the ability for people to find their way around, and the functionality and comfort of our furniture all contribute to a positive experience for our students, employees, and visitors.

Projects in this area can be as small as office furniture for a new professor or as large as planning the interior design for a new building. Signage projects are similarly wide-ranging and include everything from a new directory sign in a lobby to the renaming of an entire building (we did two of these last year). This group manages design standards on campus, ensuring aesthetic consistency and cohesion university-wide.

\$76.2m
Capital Spend





George Mason University

Master Plan



Core

Collaboration

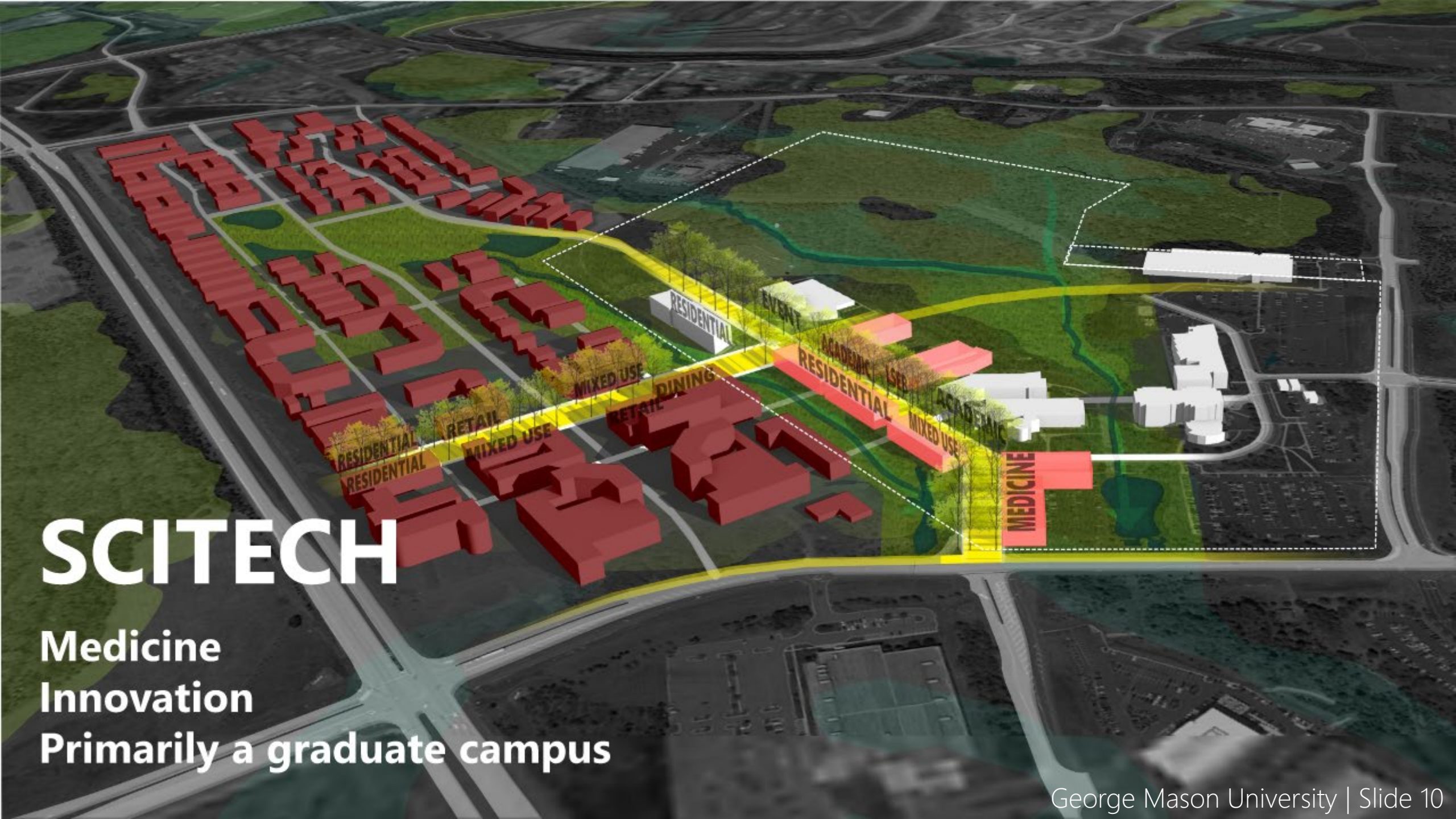
Undergrad (and grad) home

FAIRFAX REIMAGINED

Fairfax reimaged

- Existing building
- Removed building
- Proposed new building





SCITECH

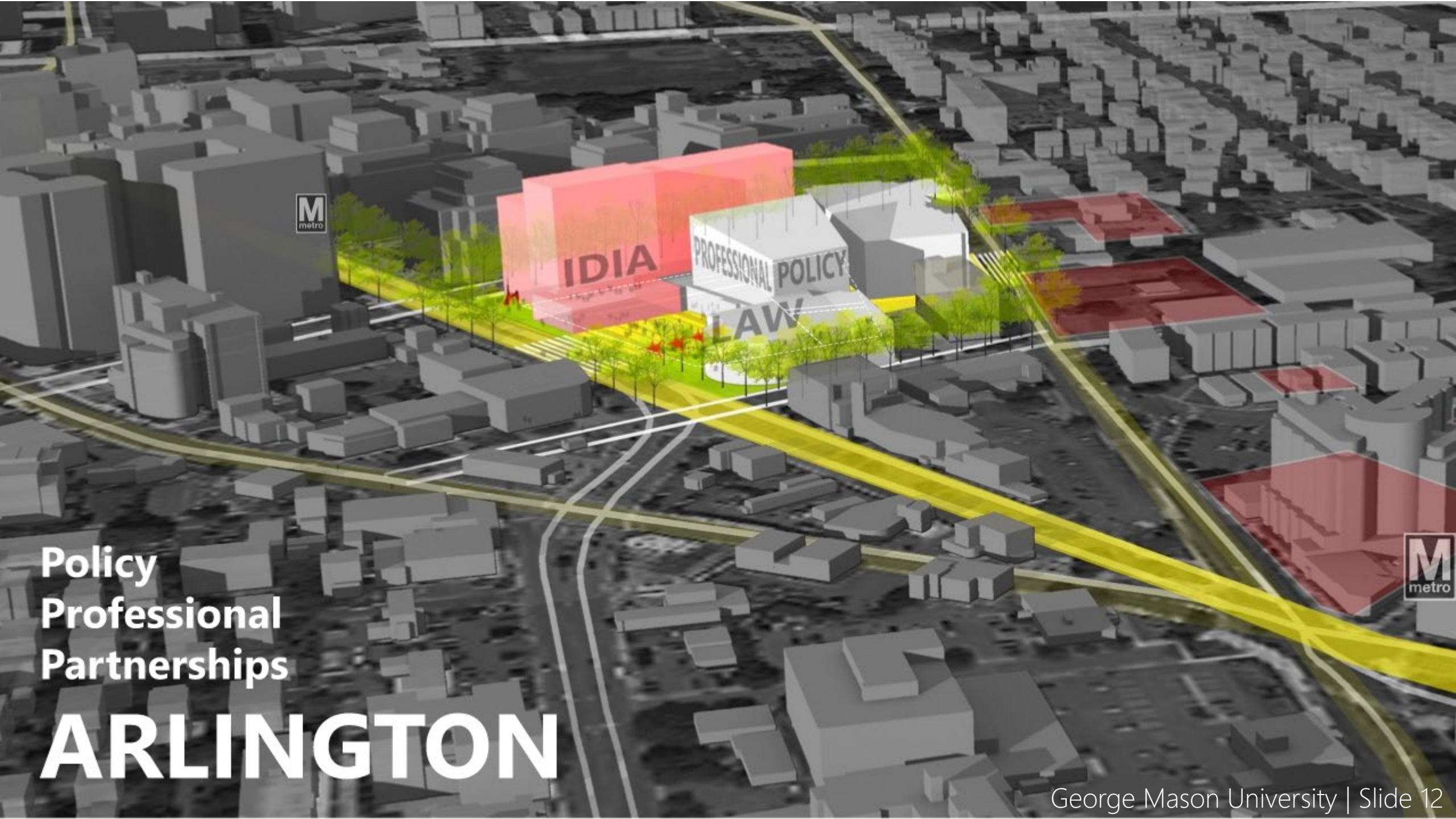
Medicine
Innovation
Primarily a graduate campus

SciTech

Integration with Innovation Town Center

Total:
New additional academic: **283K GSF**
Parking today: 2,079
Proposed parking: 2,087





IDIA

PROFESSIONAL POLICY
LAW



Policy
Professional
Partnerships

ARLINGTON

Arlington

Connection and open space

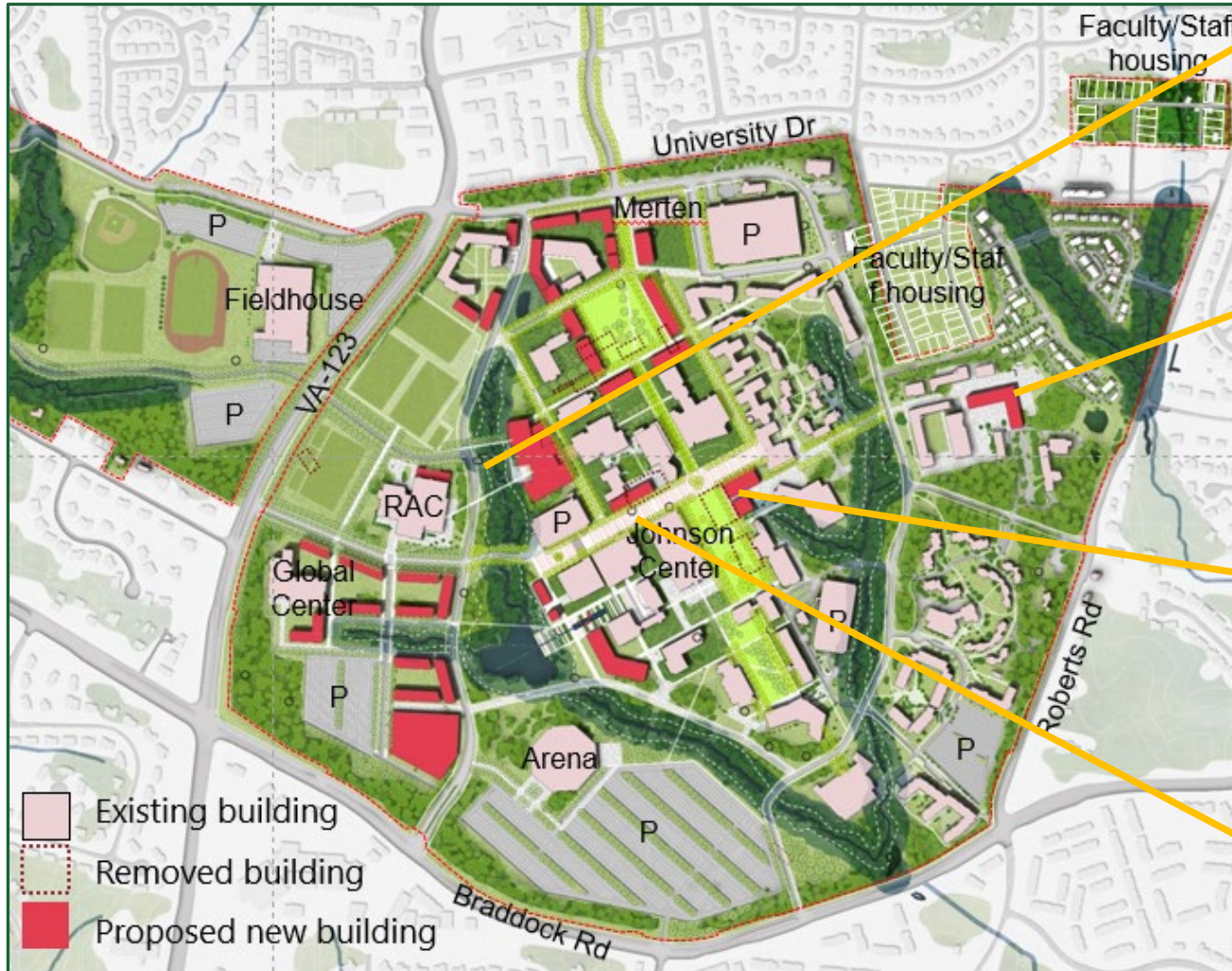




George Mason University

Near Term Development

Fairfax Campus Near Term Development



Necklace Phase 1

Student Innovation Factory Building

Interdisciplinary Science & Engineering Building

Improve Telecom/Network Infrastructure Phases 1, 2, & 3

Initial Necklace Phase I



Elements and Opportunities:

- Lighted accessible pathways on either side of stream
- Enhanced plantings promoting biodiversity
- Support and enhancement of the campus arboretum
- Inclusion of pertinent historical markers
- Locations for future art installations
- Connection to Fairfax County and City multi-modal transportation corridor
- Future integration of benches and informal areas for respite or contemplation

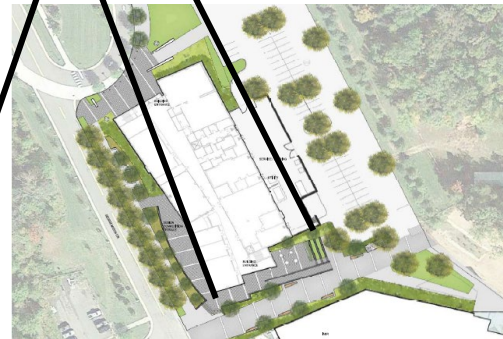
SciTech Campus Near Term Development



- Life Sciences & Engineering Building
 - Additional floor to match University Village building heights.
 - 90 degree rotation facing unified streetscape.
- University Village Phase 1 @ Innovation Town Center
 - 440 student beds
 - 12K SF in retail & dining
- Coordinated Schedule – LSEB & University Village Phase 1
 - Winter 2022 – Design Complete
 - Summer 2022 – Construction Starts
 - Fall 2024 – Construction Complete
- Connected community
 - P3 opportunities on campus and in University Village
 - Shared amenities: dining , retail, office, hotel & public spaces



Unified Streetscape



LSEB Plan View



LSEB View North



LSEB View Southeast

Arlington Campus Near Term Development - IDIA HQ

Conceptual Rendering





George Mason University

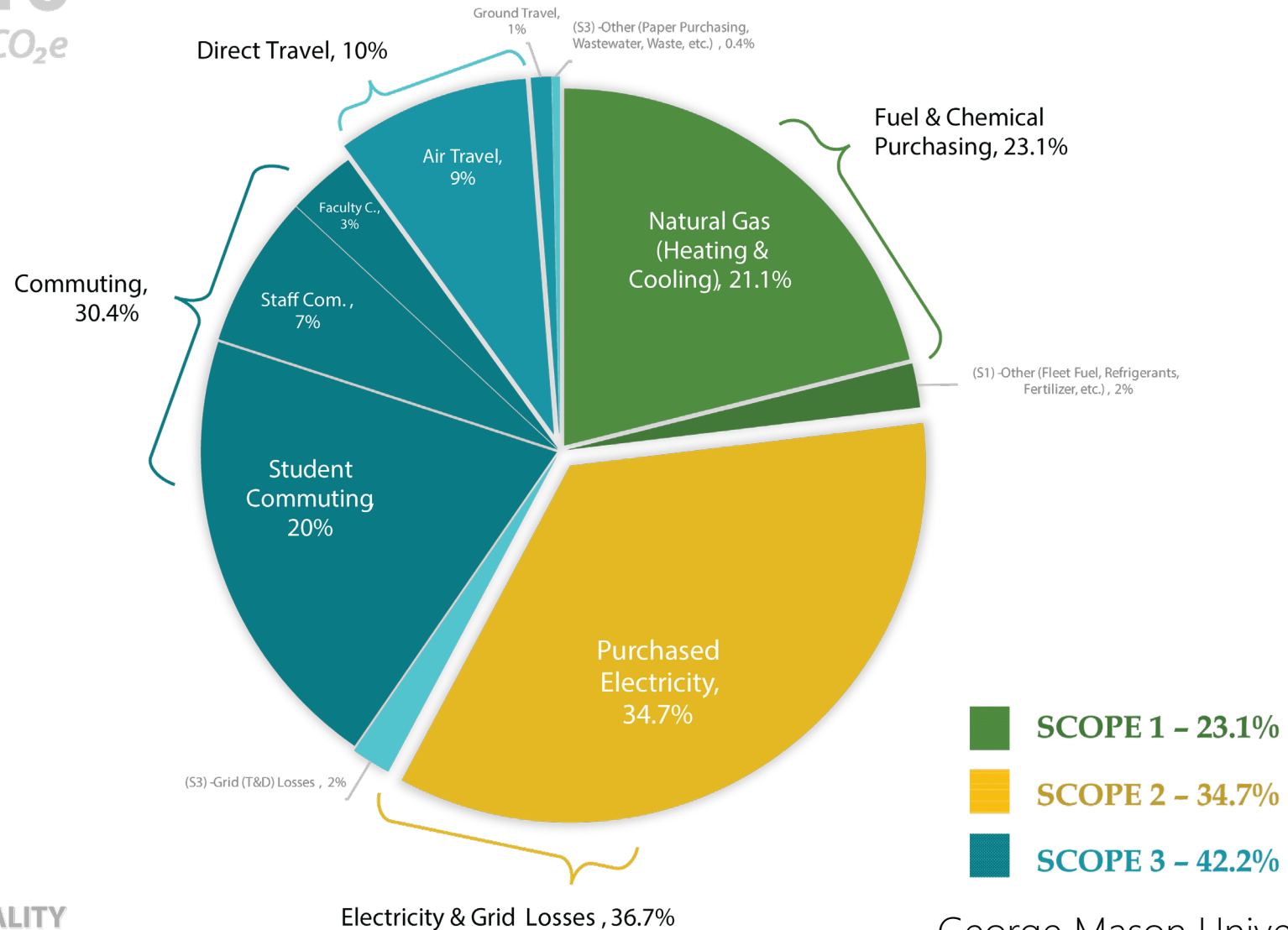
Climate Action Plan

Fy2019 Carbon Footprint

106,216
metric tons CO₂e



TARGET:
CARBON NUETRALITY



Climate Action Planning Timeline

Phase I: September 2021 to April 2022



Phase II: April 2022 and forward



George Mason University

University Building Official

Office of the University Building Official

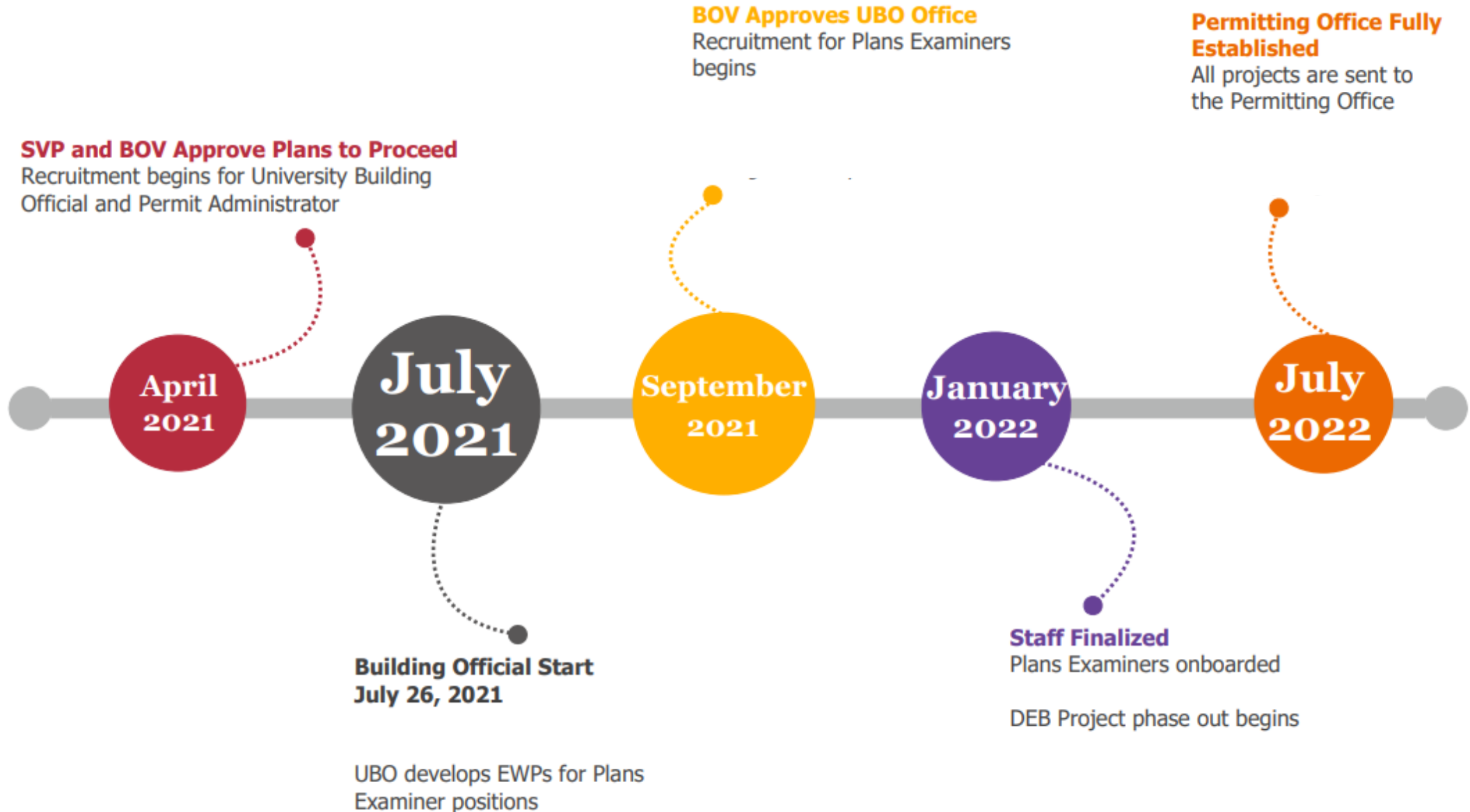
Mission

The Office of the University Building Official strives for excellence through solution-based professional services advancing the quality, value, accessibility, health, and safety of our University community.

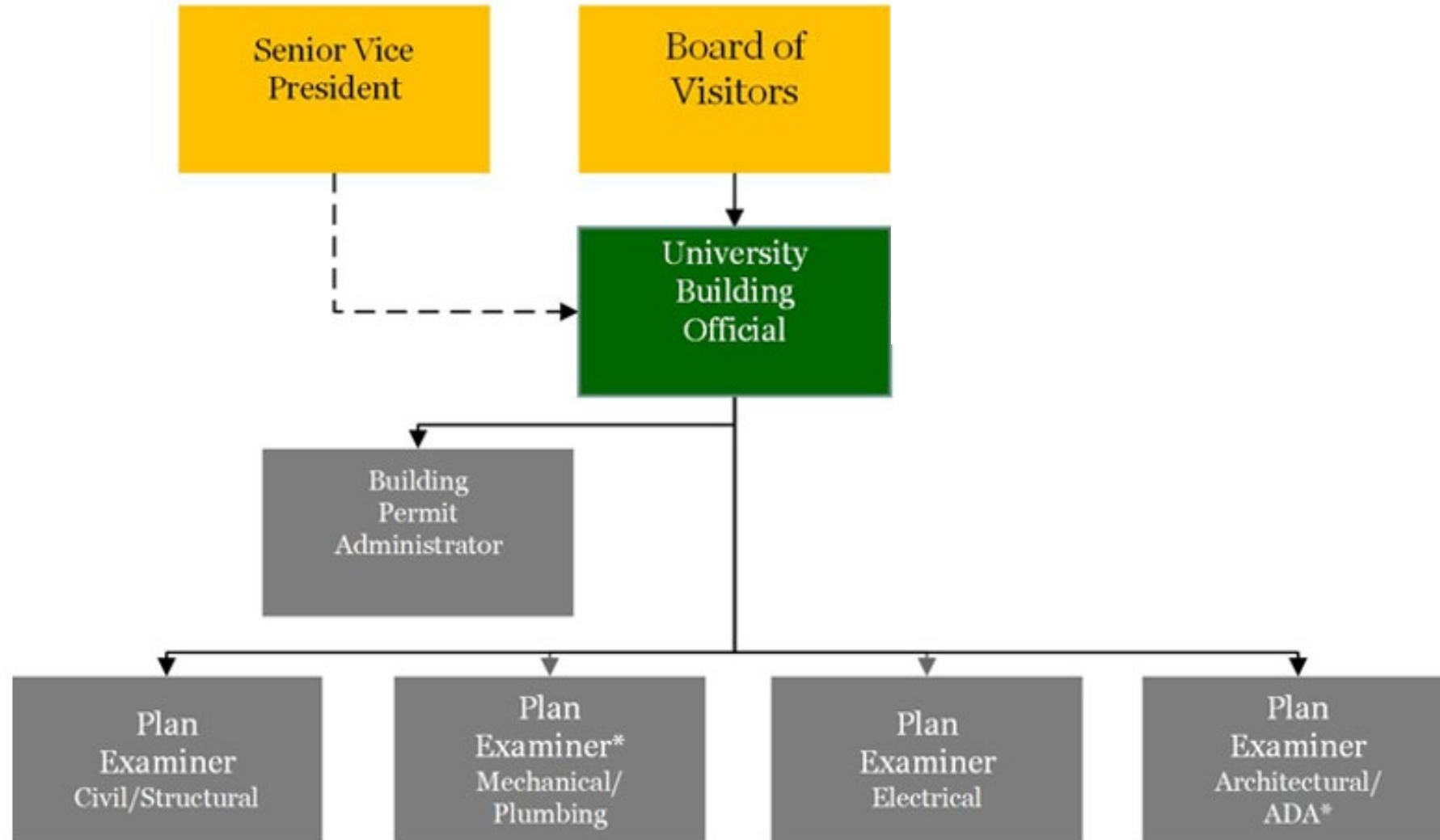
Goal

Acceleration of capital & non-capital project delivery for prompt utilization and cost savings outcomes.

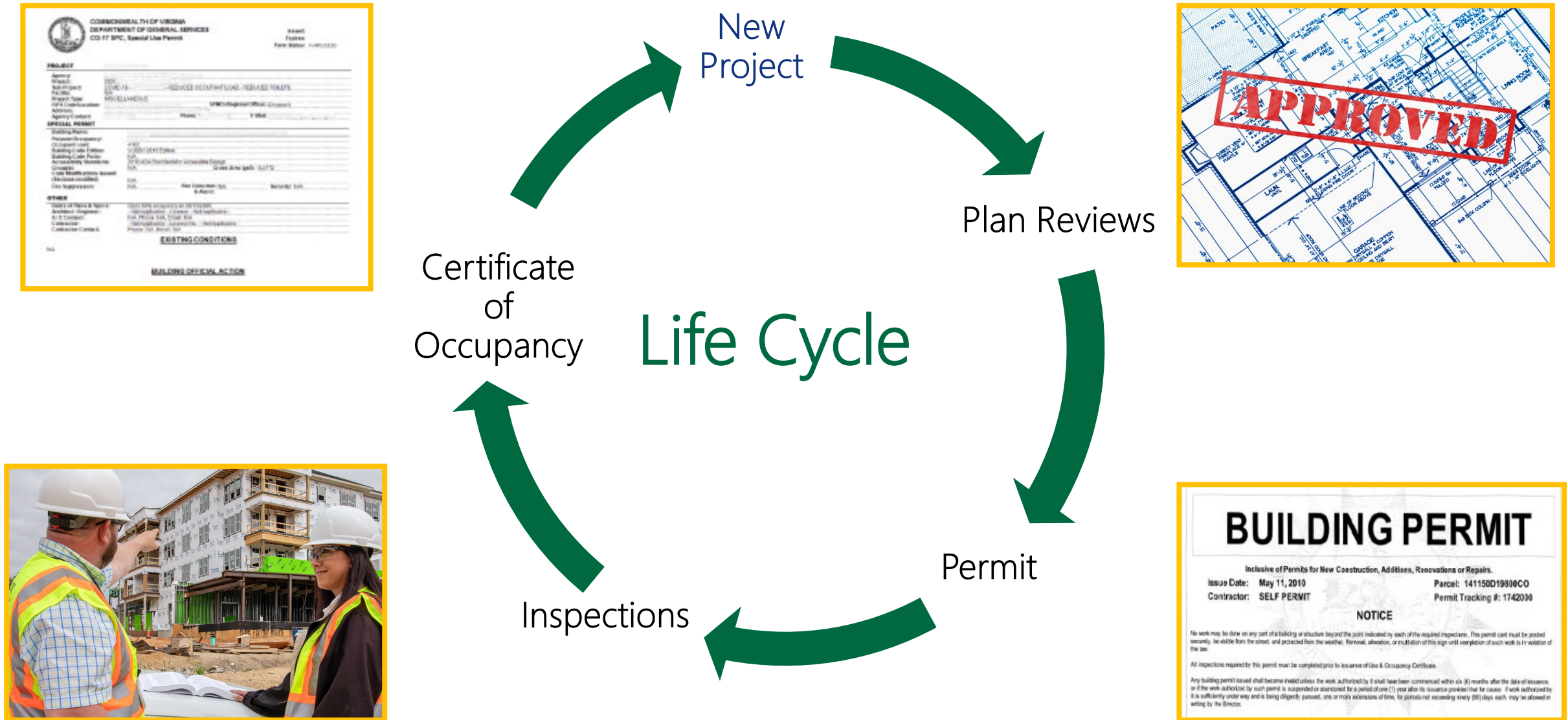
Major Milestones



Office Organizational Structure



UBO Process





Learn More at facilities.gmu.edu

Alex Iszard

AVP Planning, Design, & Construction

Aiszard@gmu.edu

703-993-9220

