



WELCOME

VIRTUAL MEETING WILL BEGIN AT

12:00pm Central

Society of American Military Engineers

Omaha Post

July 13th Meeting



Omaha Post Meeting

Society of American Military Engineers

Omaha Post

July 13th, 2023 Meeting

Meeting Agenda

- Pledge of Allegiance
- New Member/ Guest Introductions
- Announcements
- Change of Officers
- Membership Spotlight
- Presentation
- Q&A
- Split Kitty Drawing
- Closing Remarks

Pledge of Allegiance



I pledge allegiance to the Flag of the United States of America, and to the Republic for which it stands, one Nation under God, indivisible, with liberty and justice for all.

Introductions

- Welcome to New Members
- Introduction of Guests

Announcements

- August General Membership Meeting
 - ▶ August 10, 2023 @ Field Club
 - ▶ Topic: CMMC in the Wild, Lori Jackson
- September General Membership Meeting
 - ▶ September 14, 2023 @ Field Club
 - ▶ Topic: Hurricane Fiona impact, Scott Perkins

Announcements

2023 HOSPITALITY EVENT

Come on Up to Our
Rooftop Beer Garden!

**Blatt Beer &
Table North
Downtown**

610 North 12th St.
Omaha, NE 68102

THURSDAY
JUNE 1
6:00pm-10pm

**\$20 SUGGESTED DONATION
TO THE**
SAME
OMAHA POST SCHOLARSHIP FUND

SPONSORED BY



TLI CONSTRUCTION INC.

CO-SPONSORED BY



BOLD CONCEPTS

Galloway



Thank You
TLI Construction
for the \$4,200
donation to
Scholarship
Program

Announcements



Announcements

- Maj. Gen. Michael Wehr, P.E., USA (Ret.) named
New Executive Director of SAME
 - ▶ Executive Director will succeed Brig. Gen. Joseph Schroedel, P.E., F.SAME, USA (Ret.)
 - ▶ SAME Executive Director, also serves as Executive Director of the SAME Foundation, reports to the SAME Board of Direction and the Society President, and is a core member of the National Leadership Team
 - ▶ The Executive Director position term is a three-year contract.
-



Installation of Officers

President- Ryan Watzke

Secretary- Brec Wilshusen

Treasurer- Brian Schuele

Vice President for Industry-Government Engagement- John Hudson

Vice President for Resilience- Tony Lang

Vice President for Professional Development and Personal Growth- Kandi Srb

Vice President for Leadership and Mentoring- Tom Svoboda

Vice President for Service Members and Veterans- Rob Hufford

Director for Communications- Chris Artz

Director for Awards and Recognition- Stephanie Heibel

Director for Young Members and Student Outreach- Stephanie Ling

Director for Relationships- Bobbi Jo Lang



Membership Spotlight





Design with Purpose. Build with Confidence.



SAME – Omaha Post Sustaining Member Presentation

**Tom Svoboda, PE,
Government Market Leader**

July 13, 2023

Schemmer

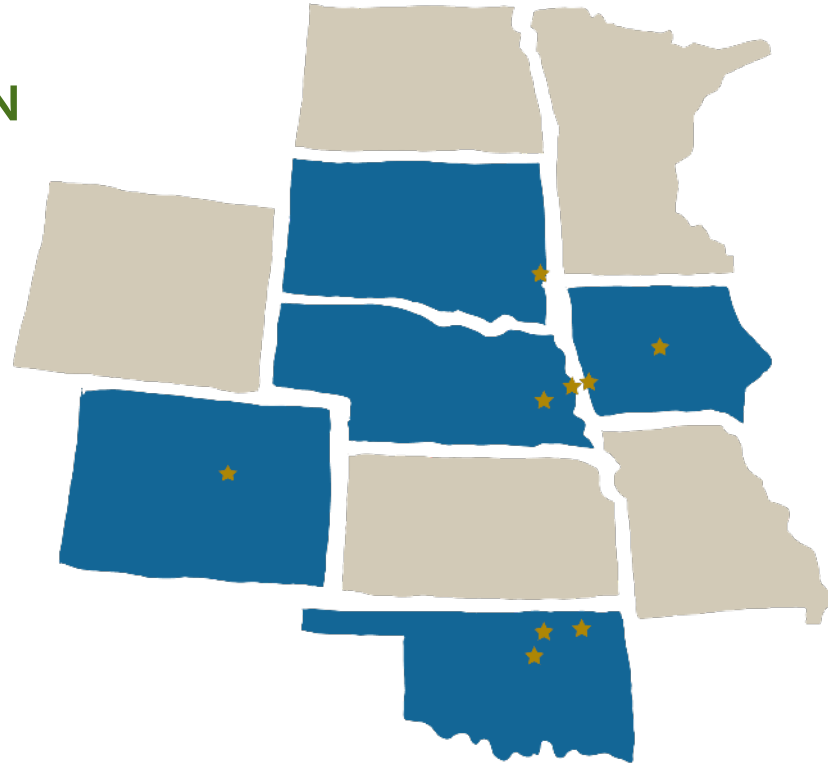
FULL-SERVICE ARCHITECTURE,
ENGINEERING & CONSTRUCTION
FIELD SERVICES CONSULTANT

FOUNDED IN 1959

NINE OFFICES IN FIVE STATES

150-PERSON FULL-SERVICE AE
FIRM

40+ YEARS OF WORKING ON
FEDERAL PROJECTS



CIVIL/SITE



TRANSPORTATION



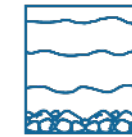
WATER/WASTEWATER



SURVEY



GEOTECH



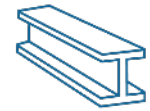
FIELD SERVICES



ARCHITECTURE



STRUCTURAL



MECHANICAL



ELECTRICAL

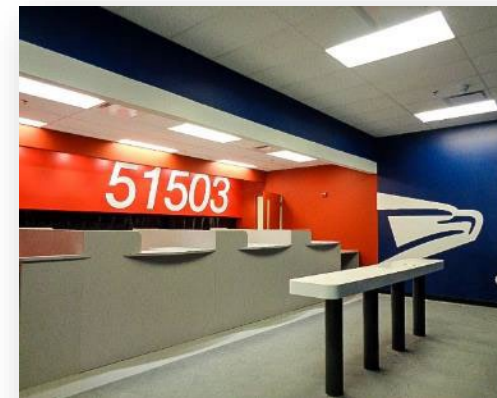


Government Experience

- OFFUTT AFB – AE IDIQ
- USDA – NORTH PLAINS REGION - AE IDIQ
- NATIONAL PARK SERVICE - AE IDIQ
- USACE – OMAHA DISTRICT
 - SELECTED FOR AIRFIELD PAVEMENT IDIQ
 - LEVEE REPAIR SUPPORT
 - SURVEY & MATERIAL TESTING
 - DESIGN-BUILD – OFFUTT AFB FLIGHTLINE
 - FACILITIES FOR AIRCRAFT FUEL SYSTEM
- GSA REGION 8 – AE IDIQ
- NATIONAL GUARD – NE, IA, & SD
- US POSTAL SERVICE - AE IDIQs



Cannon AFB – Fueling Facility



USPS Facility – Council Bluffs, IA



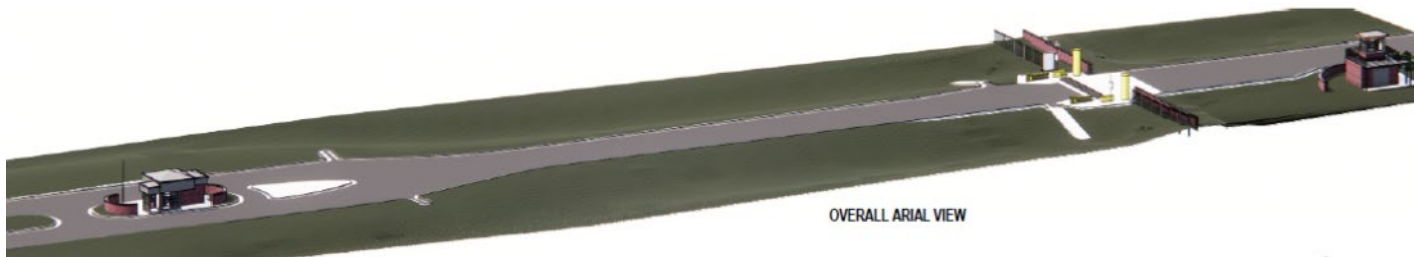
NE Air National Guard Hangar

Design Services

- FACILITY ASSESSMENTS
- PROGRAMMING CHARRETTE REPORTS
- DESIGN – BUILD RFPS
- FULL DESIGNS
- SUSTAINABLE DESIGNS (±16 LEED CERTIFIED STAFF)
- DESIGN – BUILD PROJECTS (DESIGNER OF RECORD)



South Dakota ANG Maintenance Facility



Grand Forks AFB Entrance Gate Design-Build RFP



Offutt AFB Flightline Facilities Design-Build

Construction Period Services

- GEOTECHNICAL INVESTIGATION AND REPORTS
- TOPOGRAPHICAL SURVEYS
- MATERIAL TESTING
- CONSTRUCTION STAKING



Scanning, Drones and LIDAR

- 3D SCANNING OF EXISTING BUILDINGS
- USED FOR ACCURATE BUILDING MODELING
- GATHER FIELD AREA PHOTOGRAPHY AND TOPOGRAPHIC INFORMATION



Working with Schemmer

- PRIME CONTRACTOR WITH SEVERAL AE IDIQ CONTRACTS
- SUPPORT TO CONSTRUCTION CONTRACTORS
- SMALL BUSINESS AE FIRM IN NAICS 541-330
- INTERESTED IN PARTNERING AS A TOTAL SMALL BUSINESS ON UNRESTRICTED AE CONTRACTS
- DESIGN PARTNER FOR DESIGN-BUILD CONTRACTS
- OPEN TO MENTOR / PROTÉGÉ DISCUSSIONS

SCH_{EM}MER

Design with Purpose. Build with Confidence.

THANK YOU!



Tom Svoboda, PE | Government Market Leader
402.493.4800 | tsvoboda@schemmer.com



Presentation

Offutt Natural Disaster Recovery Program

Natural Disaster Recovery Program Management Office (NDR PMO)



Offutt Natural Disaster Recovery Program

**Donald Fucik P.E.
Program Manager**

Repair, Reshape, and Rebuild

Offutt AFB Flood March 16 2019



Buildings Impacted



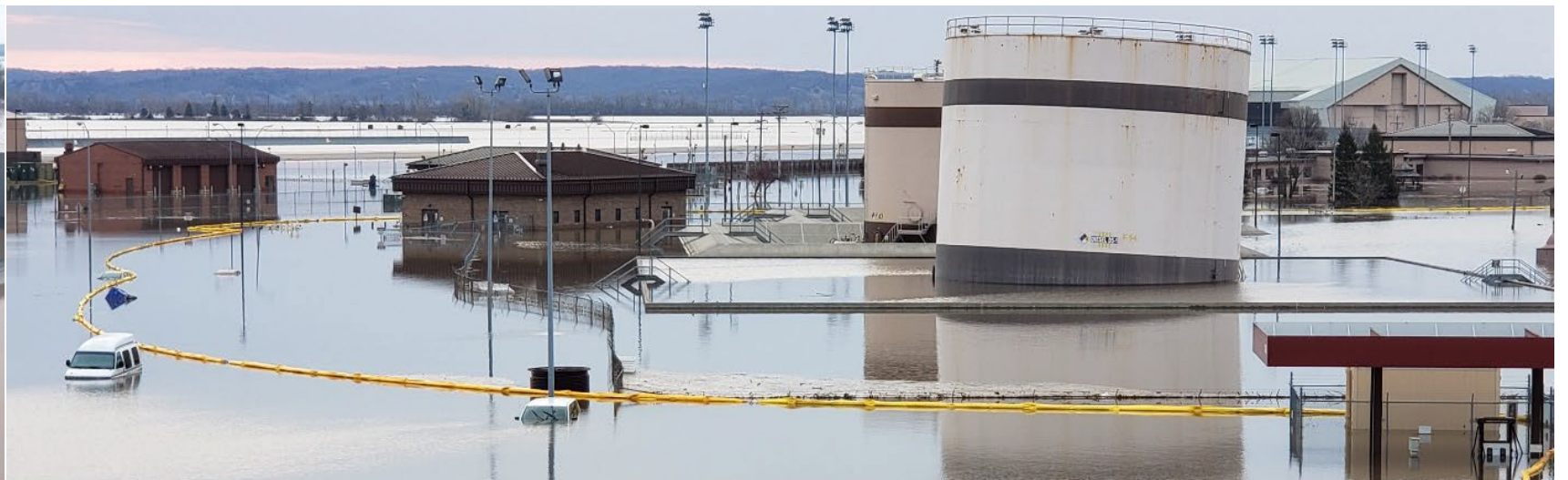
Called A 500-Year Flood

Legend

- Salvageable Flooded Facilities
- Flood Demolition
- FloodArea

226
Date: 5/30/2016

16 Mar - Historic and Disastrous Flooding of Offutt AFB



Your Success is Our Mission!



Flood Impacts



Your Success is Our Mission!



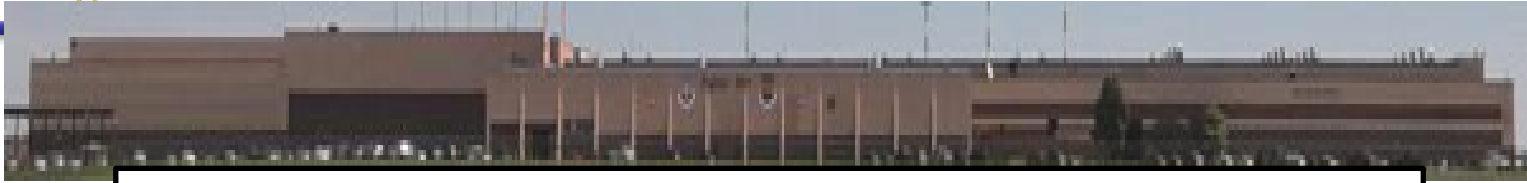
Pre-Flood – 55 WG Operations



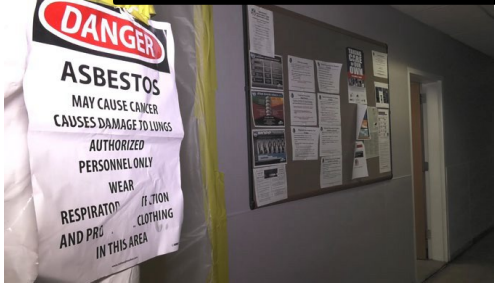
Your Success is Our Mission!



“Present” - 55 WG Operations



Now operating in 80 yr bldg: inadequate & inappropriate spaces



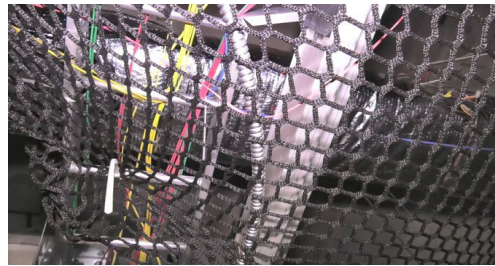
Warehouse & Industrial conditions converted into makeshift Office / Admin / Ops space



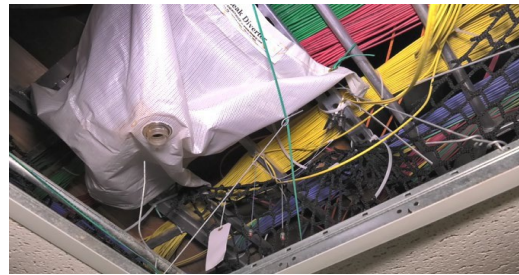
Mission Shortfalls

Capacity (Intel Production)

- 19% SCIF space / 50% NSA net terminals up
- Lost 80% of intel production



Living below heavy equipment requires nets / traps for falling concrete and polluted runoff



Safety

- Average age of Op bldgs ~78 yrs
- B301D intel ops unsafe: 24/7 msns evac'd due to Carbon Monoxide/Dioxide, toxic fumes, sewage

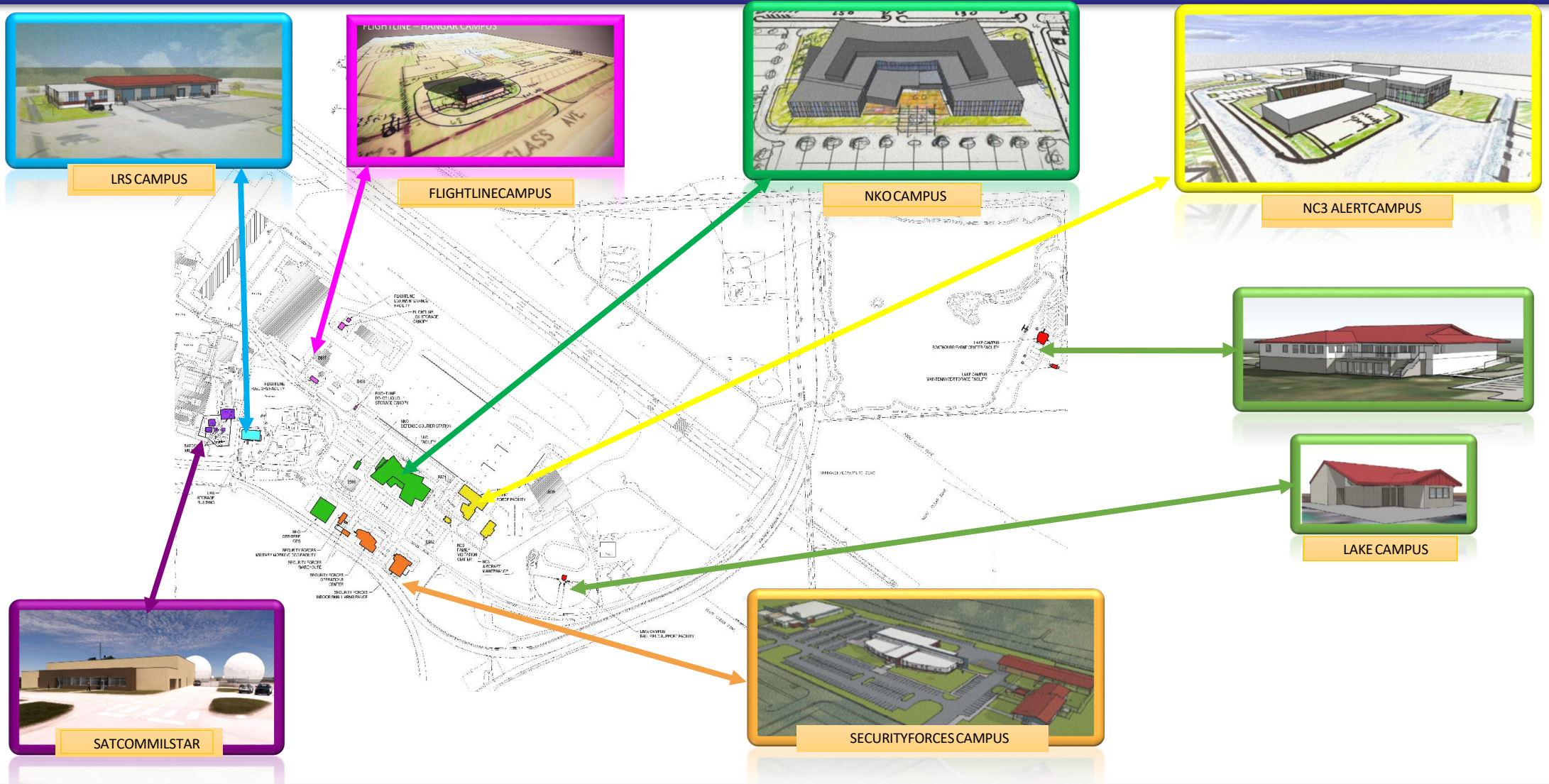


3600 personnel displaced into temporary spaces. Mission was never impacted due to flood





MILCON Campuses



Your Success is Our Mission!



Demolition Site Development Contract



Involves three campuses NC3, NKO and Security

- **Scope**
 - Construction zone establishment
 - Demolition — 318,000 SF, 41 structures
 - Over 860,000 CY of fill
 - Complete utility infrastructure replacement

- **Non-Government Involvement**
 - BNSF
 - City of Bellevue
 - Sarpy County
 - Papio NRD



Demolition Efforts



Your Success is Our Mission!



Demolition Efforts



Your Success is Our Mission!



Bldg Pad Construction



Your Success is Our Mission!



Site Construction



PHASE 1 – BUTLER BLVD. PAVING



PHASE 2 – LOOKING GLASS AVE. STORM SEWER



PHASE 3 – COMMUNICATION CONDUIT INSTALLATION NEAR B504



PHASE 2 – NIGHTWATCH AVE. BACKFILL



PHASE 2 – BACKFILL ON NC3 BUILDING PAD



PHASE 3 – GAS LINE BORING ALONG LOOKING GLASS AVE.



Your Success is Our Mission!

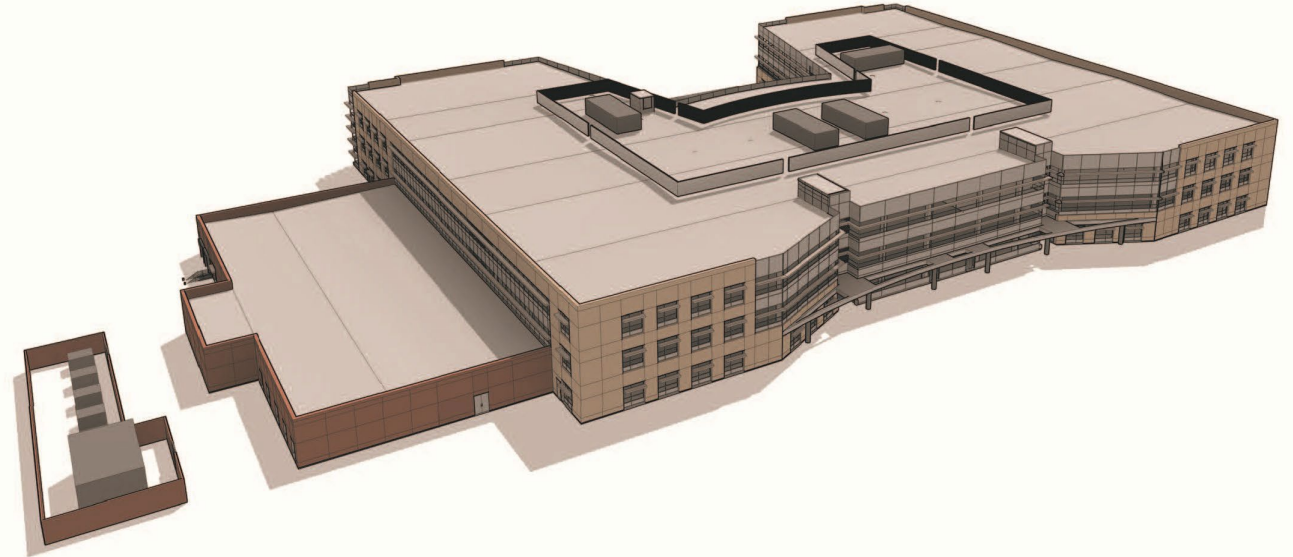


Non-Kinetic Operations (NKO) Campus



Non-Kinetic Operations

- Scope
 - 418,156 SF
 - Consolidates
 - 7 – Flying Squadrons
 - 2 – Operations Squadrons
 - 2 – Intelligence Squadrons
 - 3 – Support Squadrons
 - Secure Working Areas
 - Multi-Purpose Conference Center
 - Classrooms/Training
 - Planning/Debriefing Rooms
 - Simulators
 - Data Center
 - Step Desk
 - Locker/Shower Rooms
 - Squadron Heritage Rooms



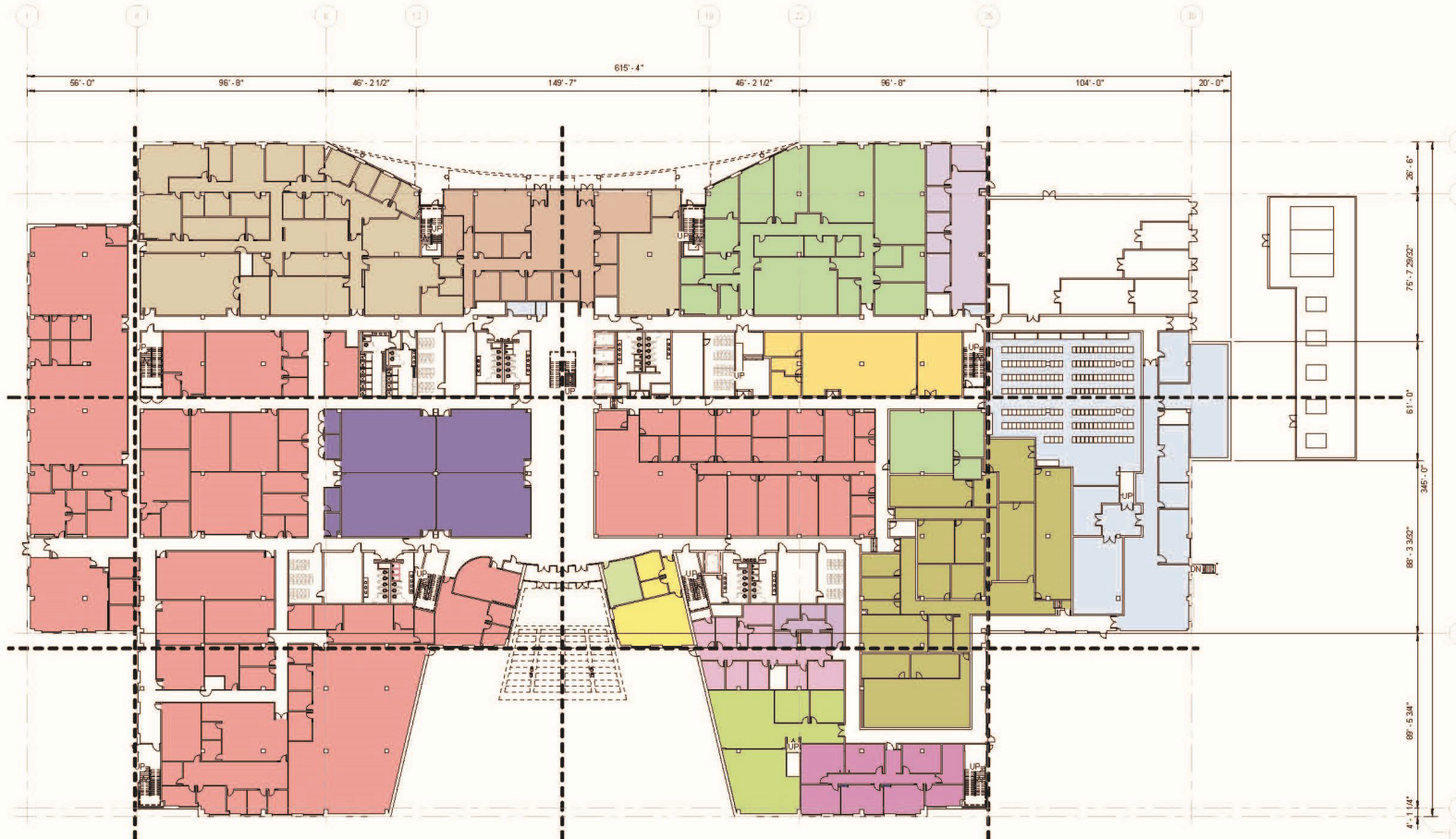
① NKO - NORTH WEST



② NKO - SOUTH EAST



Non-Kinetic Operations (NKO) Campus



GENERAL NOTES

1. SEE G-1100 FOR SECURED AREA REQUIREMENTS AND LIMITS.
2. REFER TO THE SPECIFICATIONS FOR ROOM DATA SHEETS.
3. SEE SHEET G-1100 FOR LOCATION OF 1'-6" HIGH RAISED ACCESS FLOOR IN SWIA AREAS. LOCATIONS IDENTIFIED BY HATCH ON SHEET G-1100.

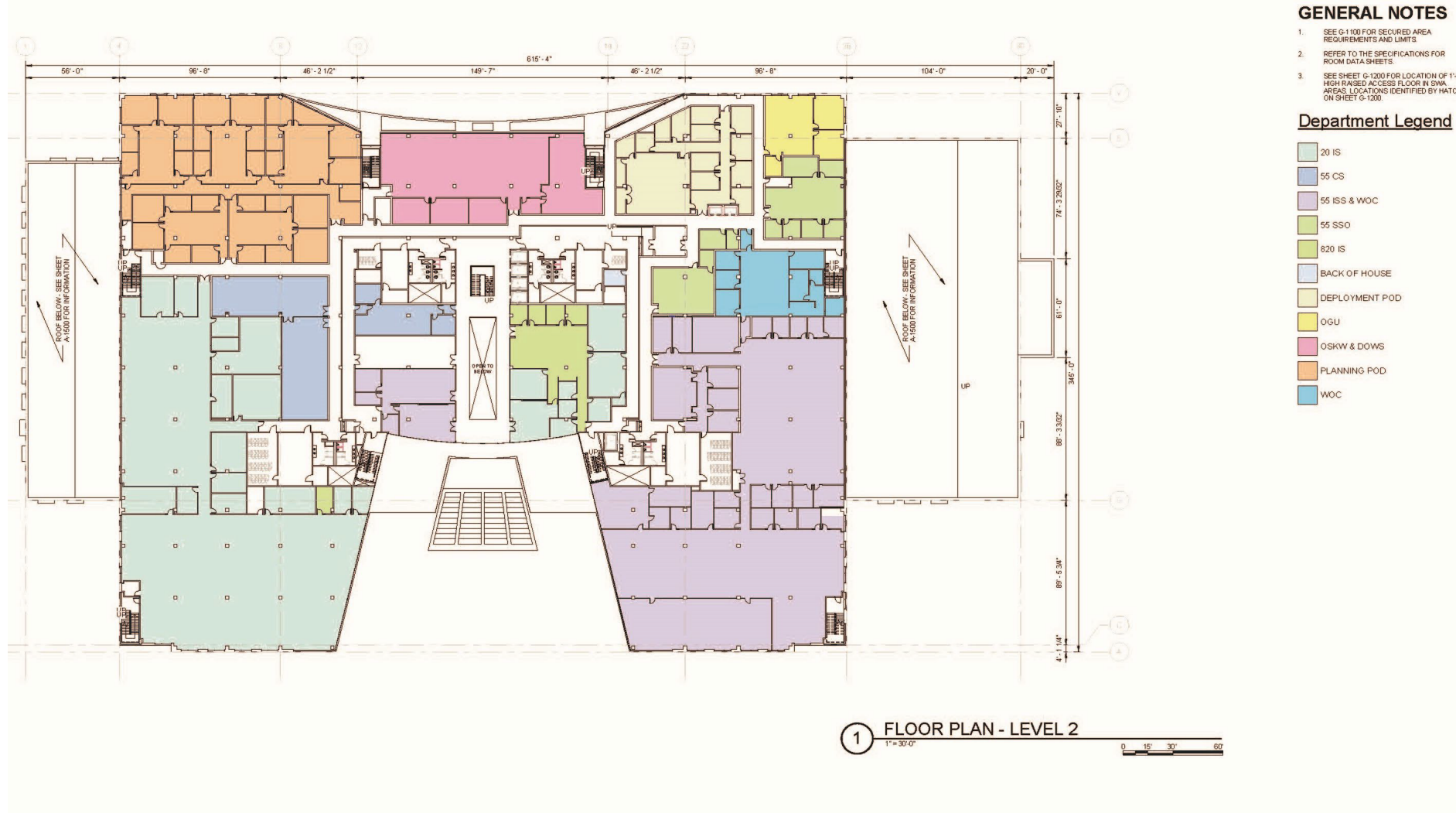
Department Legend

- 55 AMXS MAINT.
- 55 OG
- 55 OSS/170 OSS
- 55 SCS
- 55 SSO
- 170TH GP
- 338 CTS/238 CTS
- AMDS/MED
- ASE LAB
- BACK OF HOUSE
- MULTI-PURPOSE
- OG SIM OPS
- RESILIENCY
- STEP DESK
- VR LAB

1 FLOOR PLAN - LEVEL 1 - OVERALL
 1" = 30' 0"
 0 15' 30'

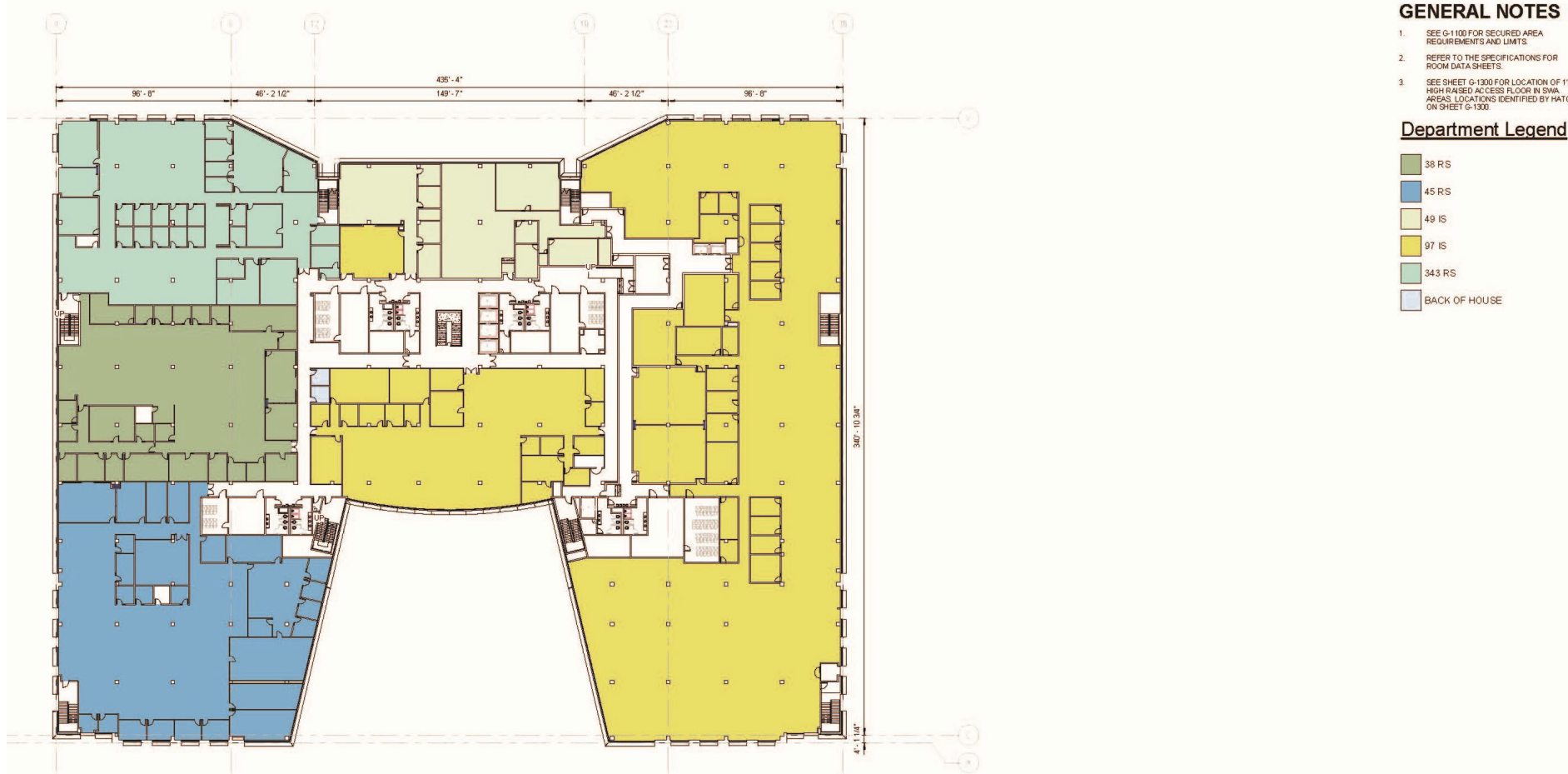


Non-Kinetic Operations (NKO) Campus





Non-Kinetic Operations (NKO) Campus



GENERAL NOTES

1. SEE G-1100 FOR SECURED AREA REQUIREMENTS AND LIMITS.
2. REFER TO THE SPECIFICATIONS FOR ROOM DATA SHEETS.
3. SEE SHEET G-1300 FOR LOCATION OF 1'-6" HIGH RAISED ACCESS FLOOR IN SHM AREAS. LOCATIONS IDENTIFIED BY HATCH ON SHEET G-1300.

Department Legend

38 RS
45 RS
49 IS
97 IS
343 RS
BACK OF HOUSE

1 FLOOR PLAN - LEVEL 3
1" = 30'-0"
0 15' 30' 60'



Non-Kinetic Operations (NKO) Campus



Defense Courier Station

- Scope
 - 4,800 SF
 - Administrative Space
 - Customer/Issuing Area
 - Secure Area Warehouse/Staging Area
 - Controlled Vehicle Access
 - Perimeter Security



① SOUTHEAST PERSPECTIVE



Non-Kinetic Operations (NKO) Campus



Operations Support Squadron, Aircrew Flight Equipment/Survival Evasion Resistance Escape (OSS AFE/SERE)

- Scope
 - 48,000 SF
 - Chemical Gear Storage/Issue
 - Flightline Storage
 - AFE Flightline Ops/Equipment Storage
 - SERE Equipment Storage
 - ACCA Warehouse
 - Classrooms/Training Areas



2 VIEW FROM NORTHWEST



4 CHEMICAL GEAR SHOP 112



3 VIEW FROM SOUTHEAST



1 CORRIDOR 123



5 CORRIDOR 102

Your Success is Our Mission!



NC3 Alert Campus



NC3 Alert

- Scope
 - 143,000 SF
 - Supports E-4B and E-6B Aircraft
 - Berthing Suites
 - DFAC Dining Hall/Flightline Kitchen
 - Secure Working Areas
 - 300 Seat Auditorium
 - Airborne Launch Control Systems (ALCS) Simulators
 - Fitness Center
 - Alternate Command Post
 - Admin Space/Planning Rooms
 - Day Rooms w/ Kitchens
 - Laundry Rooms
 - Loading Dock



Your Success is Our Mission!



Aircraft Maintenance/Parts Storage

- Scope
 - 22,900 SF
 - Ground Support Equipment
 - Admin Space
 - Aircraft Parts Storage
 - Tool Room
 - Work Areas





Family Visitation

- Scope
 - 5,100 SF
 - Private space for up to 5 Families
 - Communal Multi Space
 - Preparation and Serving Kitchens
 - NC3 Alert In-processing Offices
 - Communication Hut
 - Patio and Play Areas





Operations Facility

- Scope
 - 45,500 SF
 - Command Offices
 - Base Defense Operations Center
 - Interview Rooms
 - Classrooms
 - Weapons Vault/Ammo Storage
 - Weapons Clean and Issue Area
 - Guardmount
 - Training Areas
 - Supply Areas





Range/CATM Facility

- Scope
 - 40,000 SF
 - 28 Lane Firing Range
 - 3 lane Exterior Machine Gun Range
 - Offices
 - Classrooms
 - Weapons Simulator
 - Weapons Maintenance Shop
 - Weapons Cleaning Area
 - Arms Vault/Issue Area
 - Vehicle Maintenance Area
 - Student Break Area





Military Working Dog Kennel

- Scope
 - 14,400 SF
 - Indoor Kennels for 8 Dogs
 - Office Area for Handlers and Trainers
 - Food Storage/Prep Area
 - Veterinarian Procedure Room
 - Isolation Kennels
 - Multipurpose Room
 - Outdoor Dog Exercise/Training Areas

Storage/Covered Dog Training

- Scope
 - 14,500 SF
 - Mobility Storage Warehouse
 - Covered Dog Training Area





Security Campus



Your Success is Our Mission!



Logistic Readiness Squadron Campus



Consolidated Warehouse/HQ Facility

- Scope
 - 27,300 SF
 - Command Offices
 - Flight Offices
 - Training Rooms
 - Cargo Inbound Area
 - Cargo Outbound Area
 - Shipping and Receiving
 - Warehouse/Storage Space
 - Wood Shop
 - Loading Dock



Your Success is Our Mission!



Logistic Readiness Squadron Campus



Your Success is Our Mission!



MILSTAR Satellite Comm Campus



MILSTAR Satellite Comm Facility

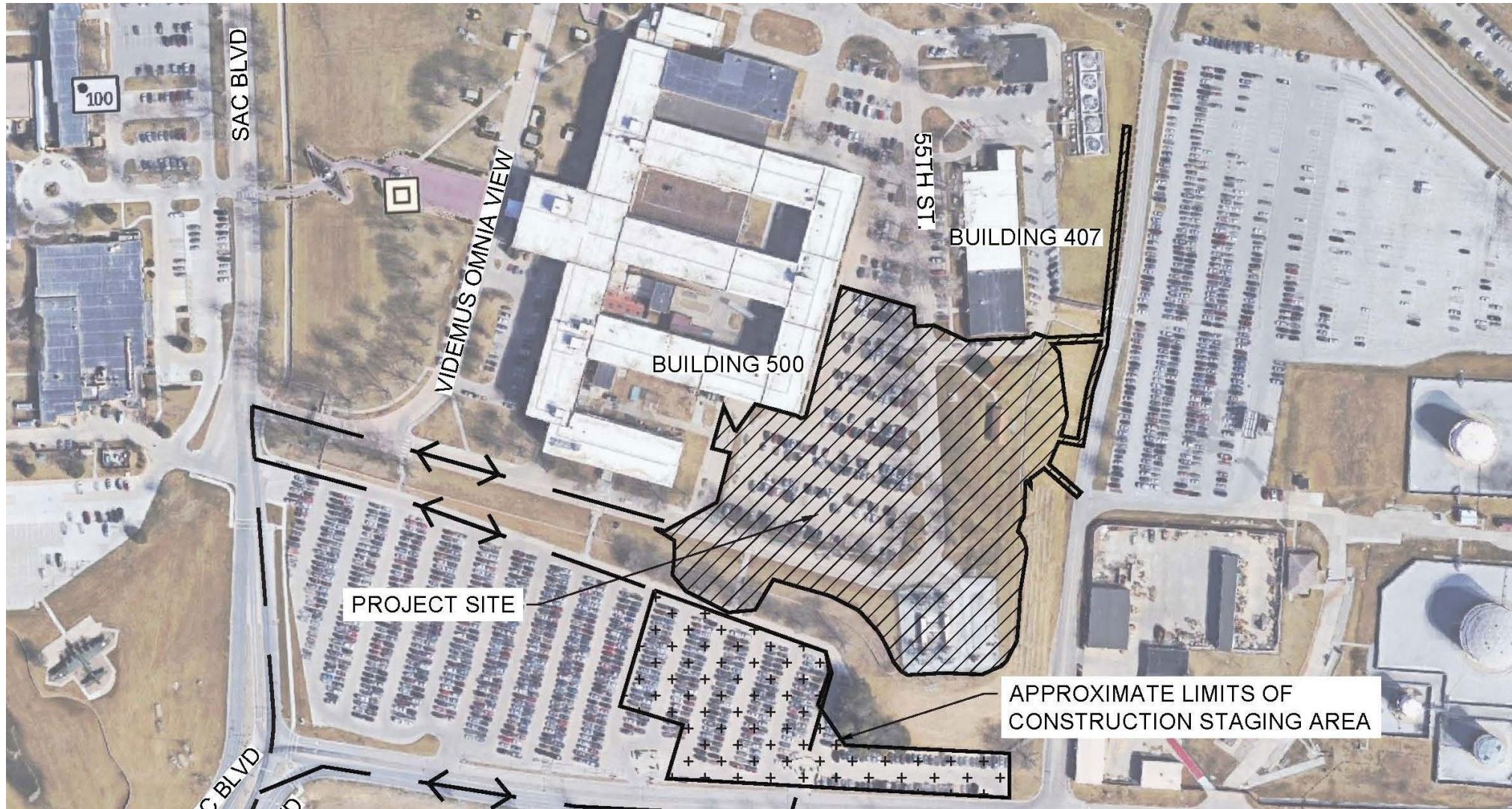
- Scope
 - 22,200SF
 - 20,700 SF of HEMP Space
 - Administrative Space
 - Fitness Area/Locker Room
 - Classrooms
 - Ops Floor
 - Work Rooms
 - HEMP Observation Space



Your Success is Our Mission!



MILSTAR Satellite Comm Campus



Your Success is Our Mission!



Flightline Hangars Campus

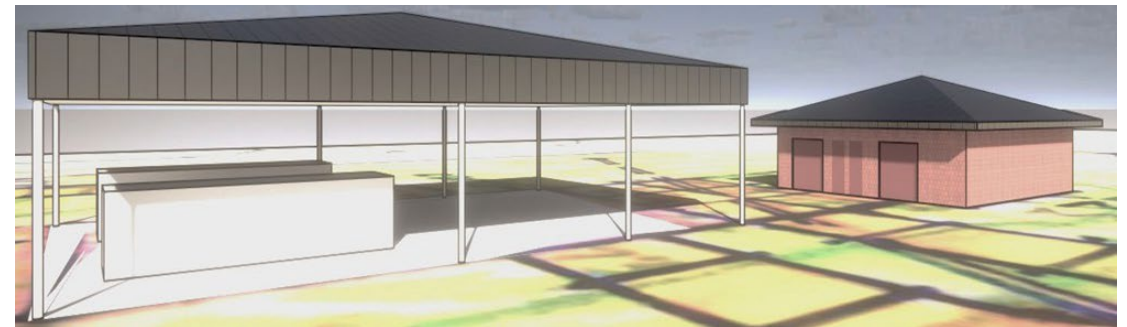


Flightline Campus

- Scope
 - Petroleum Ops
 - 4,800 SF
 - Control Center
 - Admin Offices
 - Driver Lounge Area
 - Fuels Lab
 - LOX Cart Maintenance — 1,864 SF
 - Maintenance Area
 - Cylinder Storage
 - Office Area
 - Liquid Oxygen Storage — 4,800 SF
 - Tactical Air Navigation (TACAN)—173 SF



Petroleum Ops Facility



LOX Maintenance Facility & Storage Shelter



Flightline Hangars Campus

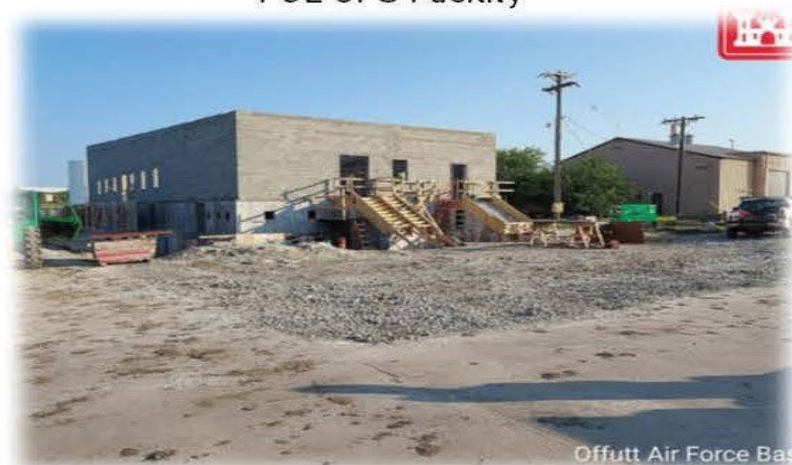


Offutt Air Force Base
Wednesday, June 7, 2023, 08:41

POL OPS Facility



Offutt Air Force Base



Offutt Air Force Base

Your Success is Our Mission!



- Scope
 - Consolidated Rec Facility
 - 10,118SF
 - 250 Person Events Room
 - Showers
 - Laundry
 - Customer Service/Store
 - Restrooms
 - Patio Area
 - MWR Equipment Storage — 2,900 SF
 - Repair Family Camp site
 - Electrical and water line replacement
 - Camping Pad replacement
 - Softball Complex — 2,583 SF



Consolidated Rec Facility



MWR Equip Storage



Softball Complex



Lake Campus



Your Success is Our Mission!



Overall Flood Recovery Summary



- 10 Projects Across 7 Campuses
 - 7 Design-Build
 - 3 Design Bid Build
- 9 Projects Awarded
 - \$836M
 - 6 Projects Currently in Construction
 - 1 Project Currently in Design
 - 2 Projects Awaiting NTP
- 1 Project in Advertisement
 - NKO Parking Lot

Natural Disaster Recovery Program Management Office (NDR PMO)



QUESTIONS ?

Repair, Reshape, and Rebuild

Meeting Close

- Split Kitty Drawing
- PDHs available from the Omaha Post Website