



OICC China Lake Earthquake Recovery Overview

17 JUNE 2021

CAPT Laurie Scott

Commanding Officer, OICC China Lake

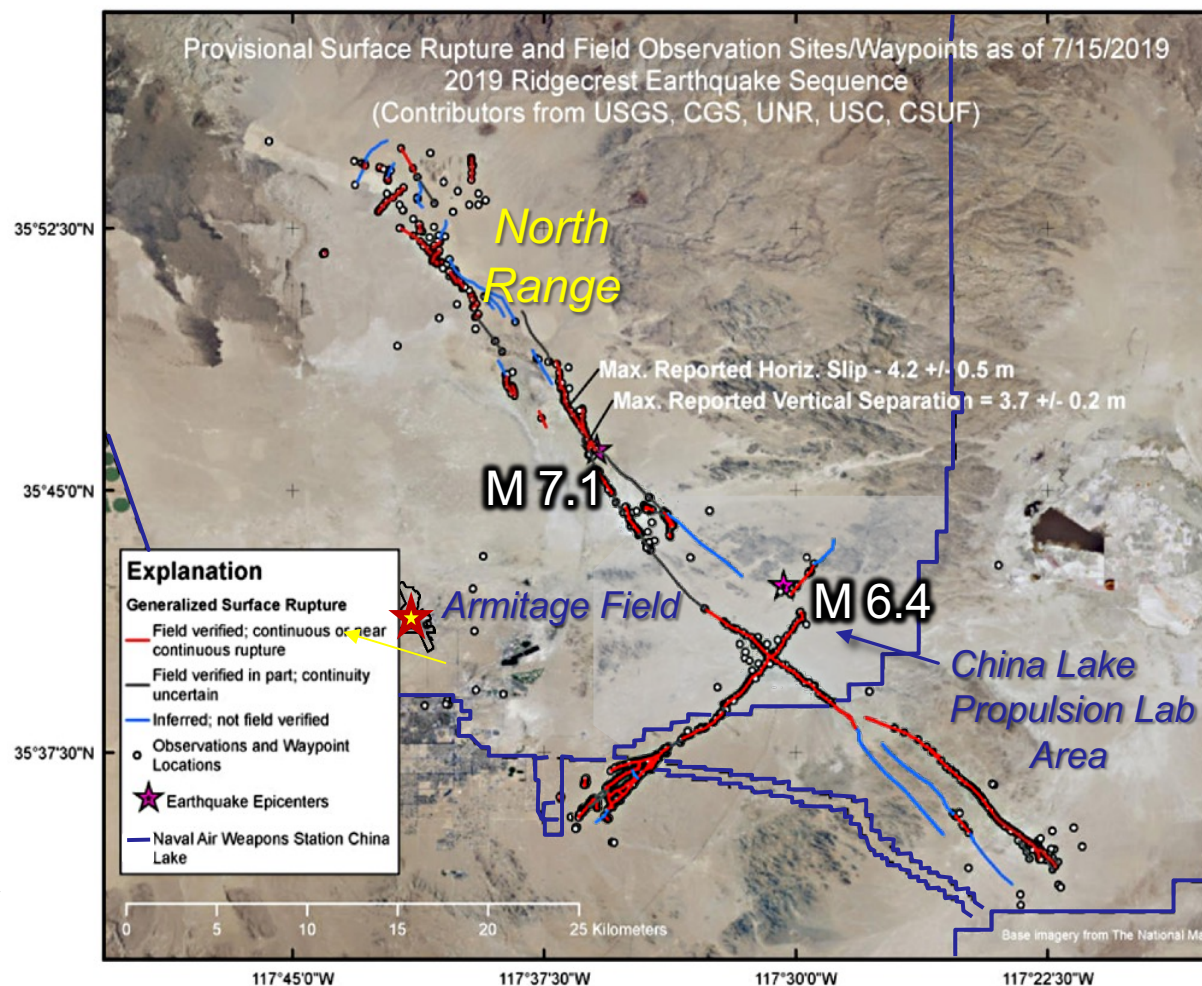


2019 Earthquake Overview



Magnitude 6.4 earthquake on 4 July, followed by magnitude 7.1 earthquake on 5 July, were both centered on Naval Air Weapons Station China Lake

- **Substantial damage to installation and tenant command facilities and equipment**
 - 234 facilities received significant damage
- **NAVFAC OICC China Lake established to execute post-award earthquake recovery program**
 - Integrated org with the execution agent (NAVFAC) and requirements generator (NAWCWD) co-located



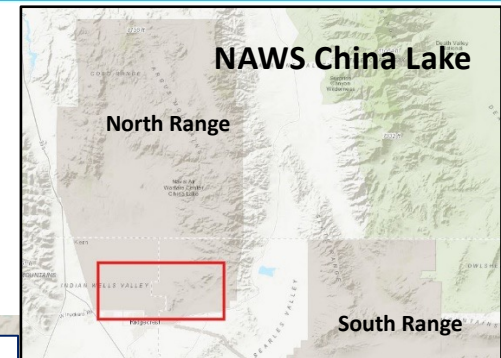


Earthquake Recovery Program Execution Overview



South Airfield:

- ✓ P1900 Hangar 3 Replacement: (\$407M)
- ✓ P1901 Integration Lab: (\$106M)
- ✓ P1902 Air Ops and ATC Tower: (\$57M)
- ✓ P1907 Aircraft Parking Apron for Hangar 2: (\$31M)
- ✓ P1908 Advanced Weapons Hangar: (\$99M)
- ✓ P1914 Aircraft Rescue & Fire Fighting Station: (\$37M)



Legend:

- ✓ FY20 Awarded (Construction Awd Amount)
- ✓ FY21 Awarded (Construction Awd Amount)
- FY21 Planned Award (Programmed Amount)



Earthquake Recovery Access Gates

TEH = Temporary Employee Housing

Range Control Complex: \$192M

- P1911 Range Control Complex: \$192M (Q3FY21)

Main Magazine Area: \$139M

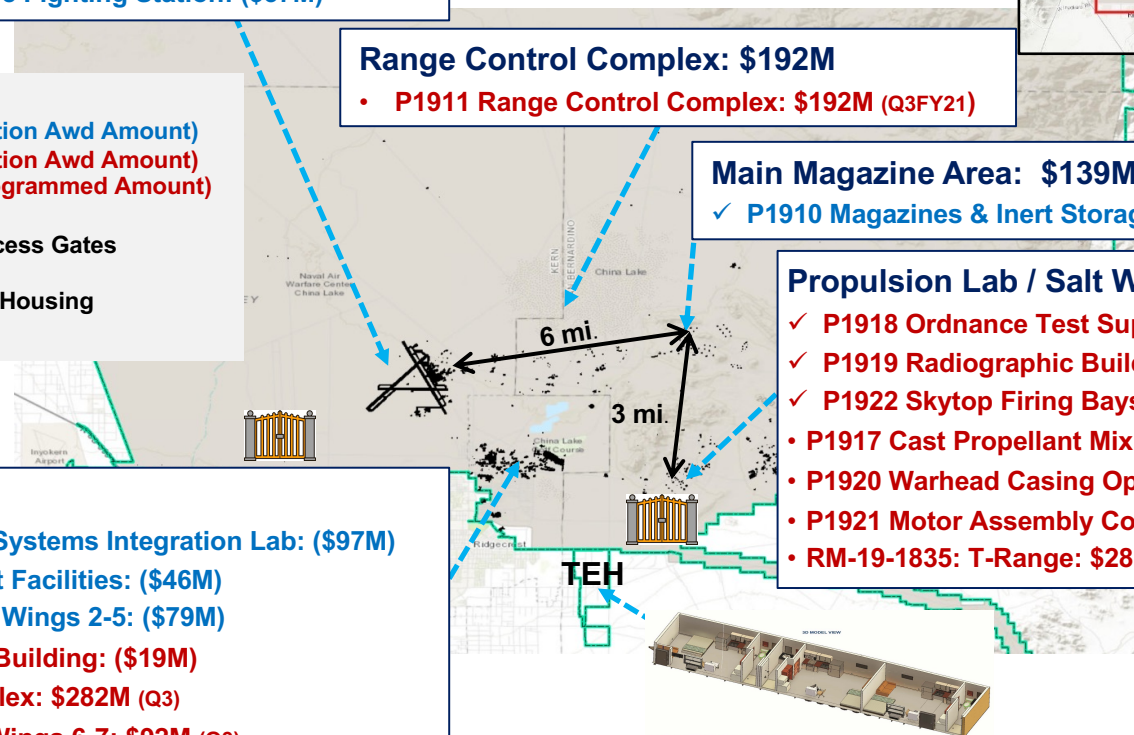
- ✓ P1910 Magazines & Inert Storage Facility: (\$100M)

Propulsion Lab / Salt Wells: \$396M

- ✓ P1918 Ordnance Test Supt & Tech Svcs Lab: (\$44M)
- ✓ P1919 Radiographic Building: (\$36M)
- ✓ P1922 Skytop Firing Bays: (\$52M)
- P1917 Cast Propellant Mix Building: \$56M (Q3)
- P1920 Warhead Casing Operations: \$23M (Q3)
- P1921 Motor Assembly Compound: \$52M (Q3)
- RM-19-1835: T-Range: \$28M (Q4)

Mainside:

- ✓ P1903 Michelson Mission Systems Integration Lab: (\$97M)
- ✓ P1916 Community Support Facilities: (\$46M)
- ✓ RM19-1867 Michelson Lab Wings 2-5: (\$79M)
- ✓ P1924 Academic Training Building: (\$19M)
- P1904 Michelson Lab Complex: \$282M (Q3)
- RM19-1867 Michelson Lab Wings 6-7: \$92M (Q3)



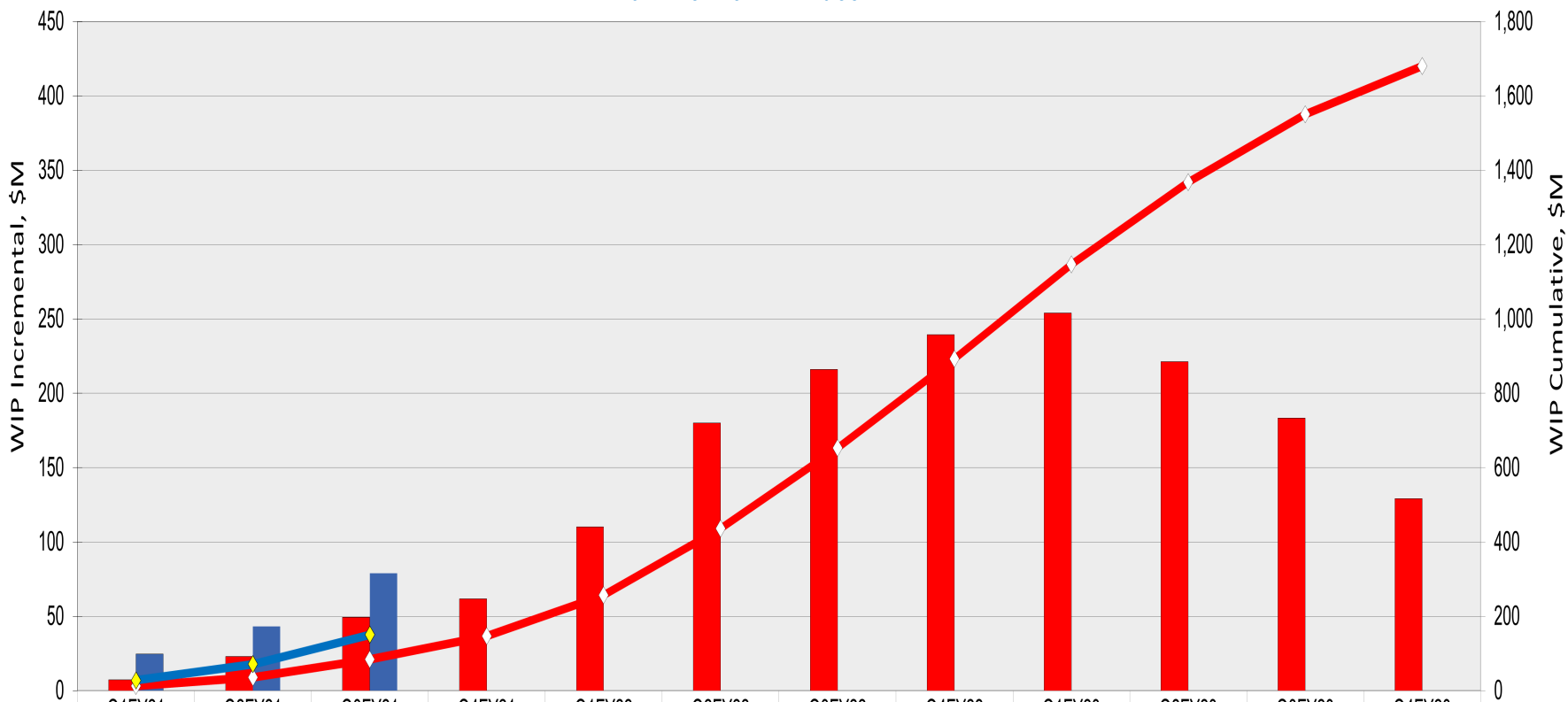
Earthquake Recovery Program Executing On-Plan and On-Budget



Program Dashboard



FY2021-23 Work in Place



■ Plan - WIP Inc, \$M	\$7.41	\$22.96	\$49.38	\$61.80	\$110.21	\$180.09	\$215.98	\$239.54	\$254.07	\$221.37	\$183.21	\$129.03
■ Actual - WIP Inc, \$M	\$24.66	\$43.34	\$78.93									
◆ Plan - WIP Cum, \$M	\$12.43	\$35.40	\$84.78	\$146.58	\$256.79	\$436.88	\$652.86	\$892.40	\$1,146.46	\$1,367.84	\$1,551.04	\$1,680.08
◆ Actual - WIP Cum, \$M	\$28.17	\$71.51	\$150.44									

Program Execution Tracking Ahead of Schedule



Post-Award Opportunities at China Lake



MILCON: Partner with MACC Contractors who won FY20 and FY21 projects

- List of winners on next slide
- Contact information posted online and provided in backup

Repair: Partner with MACC Contractors who won FY20 and FY21 projects

- OICC lead on post award execution of major repairs
- PWD lead on some pre-award and all post-award smaller repairs

Temporary Facilities: PWD has some...but bulk of the effort led by NAWCWD

- Contact NAWCWD's small business office

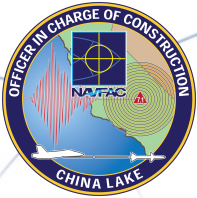


FY20 MILCON & Major Repair Awardees



- **South Air Field (6 MILCON Projects)**
 - Environmental Chemical Corporation (ECC)
- **P1903 Mission Systems Integration Laboratory**
 - Harper Construction
- **P1910 Magazines and Inert Storage Facilities**
 - Reyes Construction
- **P1916 Community Support Facilities**
 - Soltek Pacific Construction
- **Michelson Laboratory Wings 2-5 Repair**
 - RQ Construction

Small business goals are included in all construction contracts



FY21 MILCON & Repair Awardees



- **P1924 Academic Training Building**
 - Barnhart-Reese Construction
- **P1918 Ordnance Test Support & Tech Services Laboratory**
 - Soltek Pacific Construction
- **P1919 Radiographic Building**
 - Harper Construction
- **P1922 Skytop Firing Bays**
 - Harper Construction

Small business goals are included in all construction contracts



Construction Execution Force Multipliers



Bi-Monthly Partnering



Level	Government Team	Contractor	Risk
Flag	<ul style="list-style-type: none"> Commander, NAVFAC PAC 	<ul style="list-style-type: none"> President 	Extreme
Executive	<ul style="list-style-type: none"> Commanding Officer, OICC Program Director, OICC (NAWCWD) Chief Engineer, NAVFAC SW 	<ul style="list-style-type: none"> President Vice President 	High to Extreme
Senior Leadership	<ul style="list-style-type: none"> Executive Officer, OICC Operations Officer, OICC Contracting Officer, OICC Requirements Chief Engineer, OICC (NAWCWD) Program Manager, OICC Operations Officer, NAVFAC SW Design & Engineering Director, NAVFAC SW Design Production Director, NAVFAC SW Public Works Officer, NAWS CL 	<ul style="list-style-type: none"> Program Manager Design Manager 	Medium to High
Project Delivery	<ul style="list-style-type: none"> Supervisory General Engineer, OICC Construction Manager, OICC Contract Specialist, OICC Requirements Lead, OICC (NAWCWD) Program Requirements Lead, OICC (NAWCWD) Project Manager, NAVFAC SW Design Manager, NAVFAC SW 	<ul style="list-style-type: none"> Design Lead Project Manager 	Low to Medium

Typical Issue Resolution Ladder

Tenets of Partnering

- Regular executive level communication (bi-monthly)
- Alignment of common goals and objectives
- Collaboration on risk mitigation strategies
- Sharing of Key Performance Indicators (KPIs)
- Personal commitments
- Timely resolution of issues

Executive Partnering has been Critical to Early Success



Temporary Employee Housing



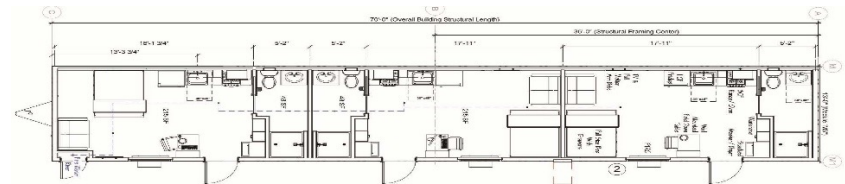
Aerial View Looking East



Housing Check in and First Aid Station



Fully Functioning Kitchen In Each Unit



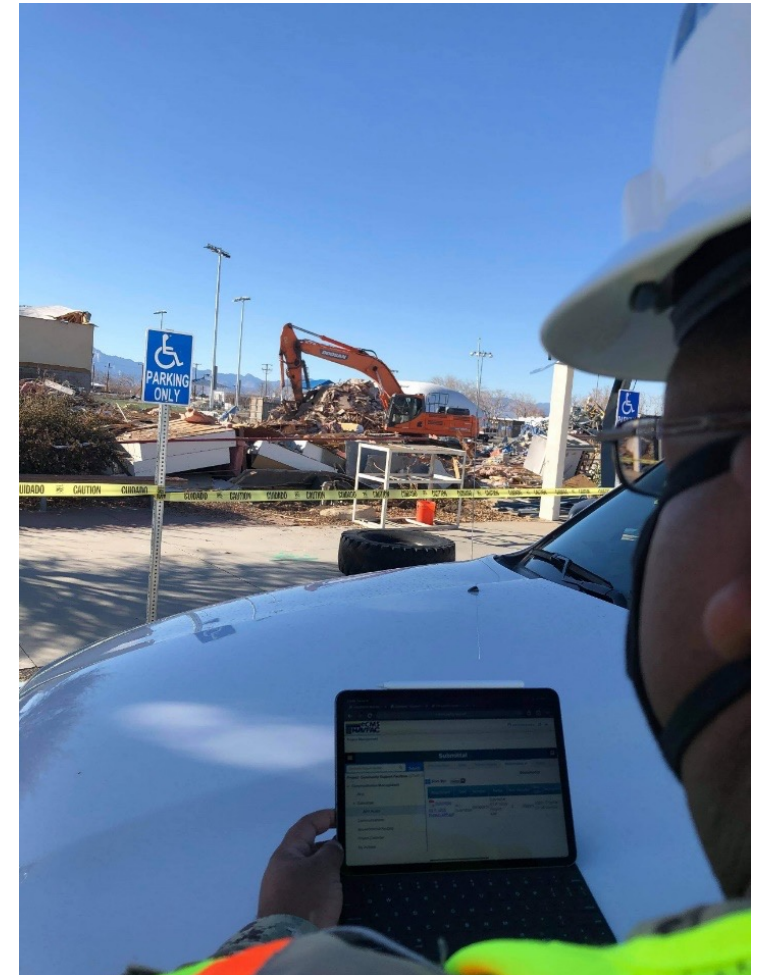
Three Units Per Pod with Kitchen, Washer/Dryer, and Full-Bath in Each Unit



eCMS



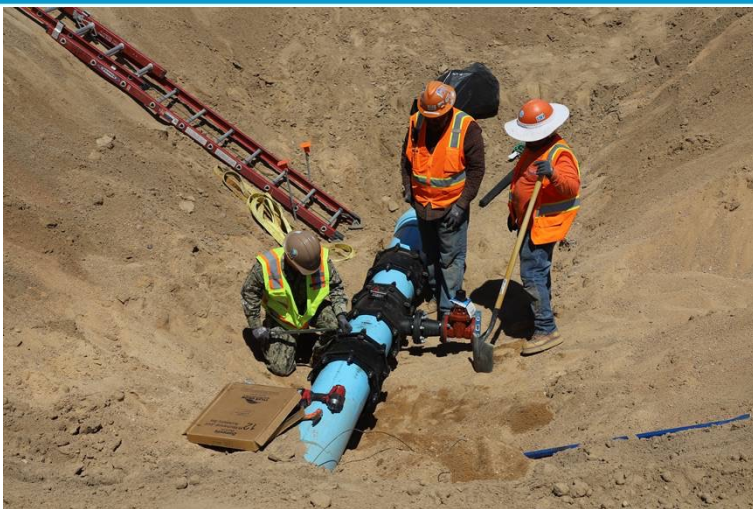
- All OICC contracts using eCMS
- Intuitive and easy to use
 - Central repository for the government and contractors
 - Reduce reliance on emails & spreadsheets
 - NAVFAC PAC personalized training/support
 - CMs and ETs have individual iPads
 - Key to keeping eCMS updated



BU1 (SCW) Cato, OICC CL Engineering Technician using eCMS on iPad during site visit to P1916, Community Support Facilities Project



Seabee Skills Mentoring Program (South Airfield Site – ECC)



Seabee installing restraining collar on 12-inch water main



Seabees learning and supporting reinforcing bar placement for a mat foundation



Seabee operating finish roller

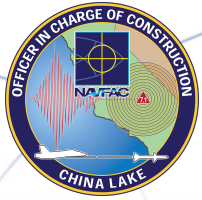


Seabee remounts 8K CAT off-road water truck for dust suppression and soil conditioning on the 158 acre site



Thank You





BACKUP



MACC Contractors Overview (1/2)



Contractor	Location	POC	SBA Liaison
Balfour Beatty	San Diego, CA	Tim Berry 858-228-7958 tberry@balfourbeattyus.com	Annie del Rio 619-380-8437 adelrio@balfourbeattyus.com
BL Harbert International	Birmingham, AL	Josh Moore 205-802-2886 jamoore@blharbert.com	Colby Heatherly 205-443-2960 cheatherly@blharbert.com
Clark Construction Group	Irvine, CA	Carlos Gonzalez, Division President 714-427-2880 carlos.gonzalez@clarkconstruction.com	Ken Billups 714-427-2886 ken.billups@clarkconstruction.com
ECC Infrastructure	Burlingame, CA	David Bluestein 650-464-9460 dbluestein@ecc.net	Elizabeth Webb (808-486-3707 x. 28017 ewebb@ecc.net
Harper Construction Company, Inc.	San Diego, CA	Dave Golden 619-233-7900 dgolden@harperconstruction.com	Antoinette Massaro 619-233-7900 amassaro@harperconstruction.com
Heffler Contracting Group	San Diego, CA	Carl Castner 406-756-1775 carl@hefcongrp.com	N/A
The Korte Company	St. Louis, MO	Brent Holman / Alan Schorfheide 314-231-3700 korte@korteco.com	Susan Bowman 314-231-3700 korte@korteco.com



MACC Contractors Overview (2/2)



Contractor	Location	POC	SBA Liaison
M. A. Mortenson Company	Minneapolis, MN	Jim Mills 763-287-3743 jim.mills@mortenson.com	Mike Wallace 763-28-3621 mike.wallace@mortenson.com
R. A. Burch Construction Co.	Ramona, CA	Robert Burch 760-788-0800 rburch@raburch.com	Dora Beltran 760-788-0800 dora@raburch.com
RQ Construction	Carlsbad, CA	Travis Nichols 760-477-8633 tnichols@rqconstruction.com	Jeff Holmes 760-477-8632 jholmes@rqconstruction.com
Sundt	San Diego, CA	Elizabeth Sanchez 949-468-5309 ecsanchez@sundt.com	De Anna Andrews 619-241-5458 CaliBizoutreach@sundt.com
Walsh Federal, LLC	Chicago, IL	William Barsella 312-563-5955 wbarsella@walshgroup.com	Charles Rodriguez 312-492-1595 cmrodriguez@walshgroup.com
Webcor Construction, LP	Los Angeles, CA	Bill Reifsteck / Aditya Thakur 213-239-6432 / 213-239-2844 breifsteck@webcor.com / aditya.thakur@webcor.com	Rosa Arevalo 213-239-6414 rarevalo@webcor.com
Whiting-Turner Contracting Company	San Diego, CA	Scott Parkinson 410-925-4791 Scott.Parkinson@Whiting-Turner.com	Joanna Harmon 443-324-4829 Joanna.Harmon@Whiting-Turner.com



OICC China Lake Reporting Alignment

