



- Dave Nash
2023 SAME
Foundation Chair

“The SAME Foundation is committed to reinvigorating our national science and technology strategy. A safe and prosperous America is directly linked to outpacing competitors in STEM fields that include the global economy. Advancing our cause requires a collective investment from academia, industry, and government – building upon the advances of STEM in concert with the needs and aspirations of the American people.”

“imagine the
POSSIBLE”

A MOVEMENT TO PRODUCE A STEM PIPELINE FOR AMERICA:
INSPIRING FUTURE GENERATIONS + **ELEVATING** LEADERS FOR THE NATION



The SAME Foundation is registered as a 501(C)(3) Non-Profit Organization.

Contributions to the SAME Foundation are tax-deductible to the extent permitted by law.

EIN: 81-1960637

AMERICA'S challenge:

- AMERICA'S STEM CRISIS THREATENS OUR NATIONAL SECURITY -

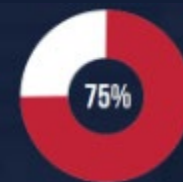
The challenges facing national security and our A/E/C community continue to grow in complexity and urgency. Our nation must have a continuous pipeline of quality engineering and STEM leaders to address these complex national security and infrastructure challenges.



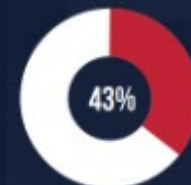
"The United States of America has dropped from **second** place in 2020 to **third** place in 2021 in a ranking of the performance of secondary school students on international science and math competitions. U.S. ranks **third** in science and math competitions, behind China and Russia."

"Every company you talk to, literally everyone...will tell you the thing they're most worried about is talent.. The rate limiting factor to growth is talent. And by the way, it's at every level. Process engineers, technicians, to the Ph.D. [in] physics and the like."

- Gina Raimondo (United States Secretary of Commerce)



LOST OPPORTUNITIES. Our K-12 education system produces enough talent in math and science to fill our need for traditional STEM workers; however, 75% of these students do not enter STEM majors in college. There is a growing disinterest in STEM.



GOING ELSEWHERE. Upon graduation, 43% of STEM graduates do not pursue jobs in STEM career fields.

OUR SOLUTION:

TO INSPIRE + ELEVATE



WHY US?

- ◀ VALUES - A LEGACY OF PUBLIC SERVICE
- ◀ CONNECTIONS TO MILITARY, THEIR FAMILIES & VETERANS
- ◀ LEADERS - READY NETWORK OF PROVEN PROFESSIONALS



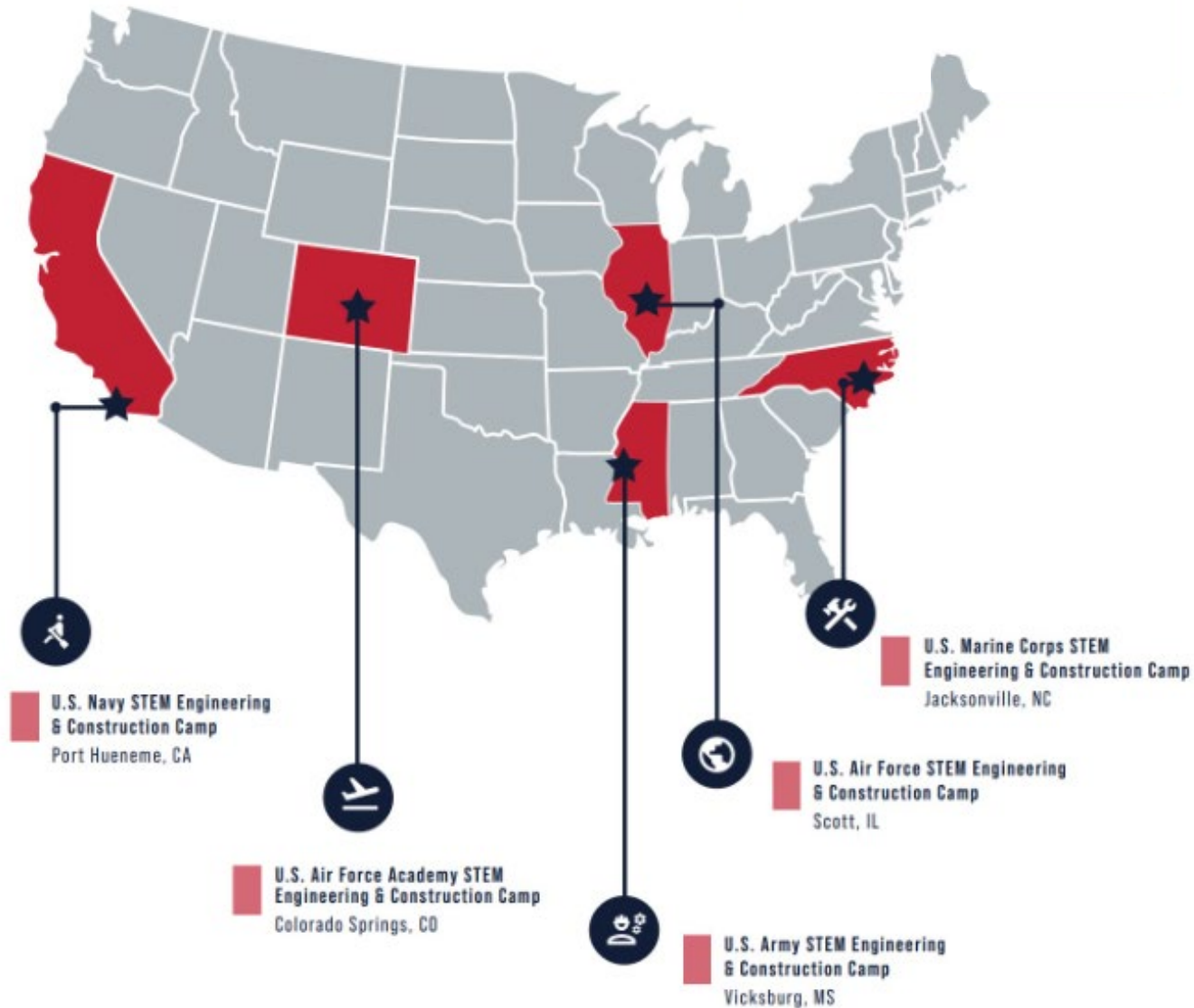
INSPIRE:



250+

High School students annually attend SAME's engineering & construction camps.

OUR CAMPS:



campers' testimonial

WHY DID I ATTEND THE CAMP?

I was a teenager searching for career path answers. I knew I wanted to work with smart people and solve big, challenging problems. I knew I wanted to make a difference!

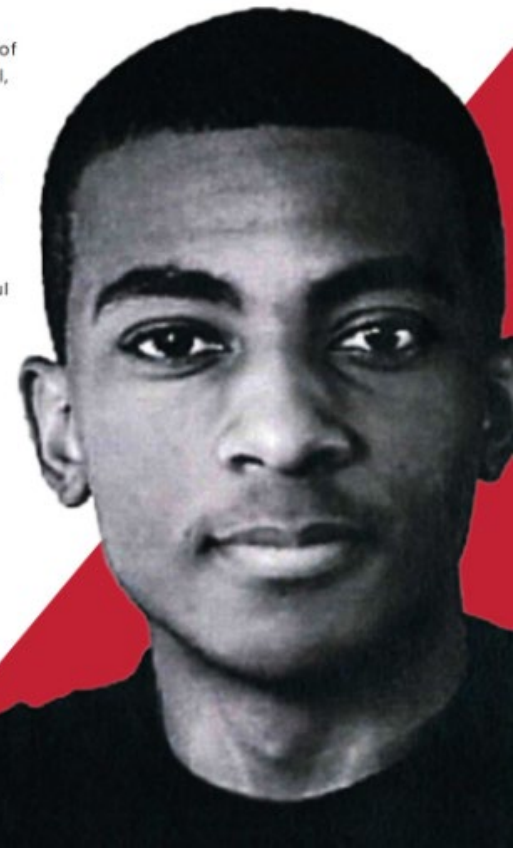
WHAT DID I GET OUT OF MY EXPERIENCE?

Camp opened my eyes to a world of possibilities. Whether skillfully competing against fellow campers to design and build the strongest concrete structures or learning the value of leadership, teamwork, and communication in reaching a goal, I became a better person. As for engineering, I was hooked!

WHERE AM I NOW HAVING BEEN EXPOSED TO ENGINEERING IN MY HIGH SCHOOL YEARS?

I followed my dreams to the Georgia Institute of Technology graduating in 2022. STEM remains my passion and I'm grateful to have collaborated with Cisco, JPMorgan Chase, and Amazon. I know SAME camp changed my life. I know I'm making a difference!

William Sheppard
Georgia Tech, 2022
Computer Science



ELEVATE.



THE LEADER DEVELOPMENT PROGRAM:

Developing leaders for the profession is an enabler for the future security of our nation.

The Leader Development Program meets this need by identifying and cultivating talented mid-career professionals to ensure the Nation's future engineering and leadership needs are met. The year-long program of speakers, book discussions, and exercises challenge

How did I get my start with SAME programs?

I have always had a passion for volunteering and mentoring students, so I was very excited when I was asked to be a mentor for the SAME STEM camp. After mentoring at the camp, I knew it was something I wanted to learn more about and become more involved!

How was my experience with SAME's Leader Development Program?

The program has allowed me to make several connections and relationships with other members and to gain leadership knowledge and skills that I could bring to the teams that I work with. It also inspired me to find more opportunities to further get involved.

Where am I now having been involved in SAME's Leader Development Program?

I look forward to being on the Board of Directors for my local Post, learning how I can be more engaged with the different COIs and continue to mentor at future STEM camps. Looking back, I am thankful for my camp mentoring experience providing me with the spark that got me involved with SAME in the first place.



Brittany Schulze
Mechanical Engineer
Technician, Federal
Business
Black & Veatch Special
Projects Corp.

SPOTLIGHT INITIATIVE OF THE SAME LEADER DEVELOPMENT PROGRAM

“WE MUST GO TO THEM”

LDP Capstone Project

- The American Indian/Alaska Native (AI/AN) communities continue to lag the general population in education and economic prosperity.
- There is a great need to support AI/AN youth education and increase post-secondary education through trade schools or formal college/university education.
- AI/AN youth who choose to pursue educational opportunities are more likely to be economically successful and more apt to return and help improve conditions within their native communities.
- Three 2021 LDP graduates researched and developed the concept for this STEM outreach project, which was awarded a grant by the United Engineering Fund (UEF).
- This effort is now a legacy initiative as participants in the current LDP class have selected this area of importance for their capstone project.

INSPIRE + ELEVATE

JOIN US:

We invite you to join our campaign to inspire the next generation of STEM professionals and elevate leaders across the full spectrum of American industry.

In addition to your generous financial contributions, this cause requires hands-on involvement, ranging from early education volunteers to camp counselors to leadership development mentors. Contact us to learn more about how you can help inspire and elevate our future leaders!



INSPIRE + ELEVATE:

The SAME Foundation is an ideal way to leave a legacy and foster engineering leadership for the nation. Your gift will help expand programs positively by impacting the next generation of military, government, and civilian leaders to meet this critical need for our nation. Visit www.same.org/donate to make your contribution today!

DONATE HERE:



CONTACT:



*Bob Schlesinger, P.E., LEED AP
BD+C, ENV SP, F.SAME*

Cell: 360-968-0899
Email: Robert.Schlesinger@stantec.com