



WELCOME!

SAME LA & OC Post
Presents:

USACE South Pacific Division Update

2 April 2021



Pledge of Allegiance





Join SAME OC



Membership Benefits:

Sustaining member companies and public agencies, and individual members benefit from the programs, and initiatives led by the SAME Orange County. Highlights of membership at the OC Post include:

- Seminars, Workshops and Meetings for the Architecture, Engineering, and Construction / Consulting Industry Professional: meet and hear from top caliber Speakers, Presenters and Workshop Facilitators
- Engage in technical competency and professional development opportunities
- Network with representatives from other companies and government agencies

Membership in SAME includes many branches of the military as well as other federal, state, and local agencies that provide and utilize engineering, planning, architecture and construction services. Our membership also includes the majority of the Southern California's major civilian engineer, planning, architectural, and construction firms that provide professional services to federal, state, and local agencies.





Join SAME OC



How to Become a SAME OC Member:

Visit <https://www.same.org/Join>

To become a member or for more information, contact

Camille Murray camille.murray@eurofinsus.com

Director

Membership Chair, Young Member Committee Chair

Eurofins TestAmerica

17461 Derian Ave., Suite 100 Irvine, CA 92614

Dong Xu dong.xu@errg.com

Director

Social Media/Communications Chair

ERRG

18231 Irvine Blvd., Suite 200, Tustin, CA 92618





Thank You Large Business
Sponsor!!!



AECOM





Thank You Small Business Sponsor!!!



GENTERRA
CONSULTANTS, INC.

MGE ENGINEERING, INC.



Reminder for Q&A

- Please click on “?” or “Show Q&A” in upper right corner
- Click “Ask a Question”
- Type question
- You can “upvote” the question that most interests you



Agenda

- SAME LA Welcome
- SAME Regional VP Update
- Presentation
 - B.G. Commander and Division Engineer of the South Pacific Division of the U.S. Army Corps of Engineers
- Sponsor Recognition
- Close





LA Post Welcome and Update



SAME LA Post Virtual Business Opportunities Forum **April 22-23 9am – 3pm**

Meet the Agencies: One-on-one Video Networking





SAME CA RVP Medal Presentation



Congratulations!
Rob Blasberg

For Outstanding Service to SAME
Los Angeles Post





Guest Speaker

Brigadier General Paul E. Owen, Commander and Division Engineer of the South Pacific Division of the U.S. Army Corps of Engineers

B.G. Owen is the commander of the USACE South Pacific Division (SPD). The Division, headquartered in San Francisco, is one of nine USACE regional commands. With five District Offices in San Francisco, Los Angeles, Sacramento, Phoenix, and Albuquerque; SPD encompasses all or part of ten states. As the SPD Commander and Division Engineer, B.G. Owen oversees hundreds of water resources development and military design and construction projects that bring value to our communities, our Nation and our warfighters. B.G. Owen was commissioned as an Engineer Officer from the U.S. Military Academy in 1990, where he received a Bachelor of Science in Aerospace Engineering. He also holds a Master of Science in Engineering Management from Missouri University of Science and Technology, and a Master of Science in Nuclear Engineering from Massachusetts Institute of Technology.



SOUTH PACIFIC DIVISION UPDATE

Society of American Military Engineers
Los Angeles & Orange County
April 2, 2021

BG Paul E. Owen
Commanding General,
South Pacific Division



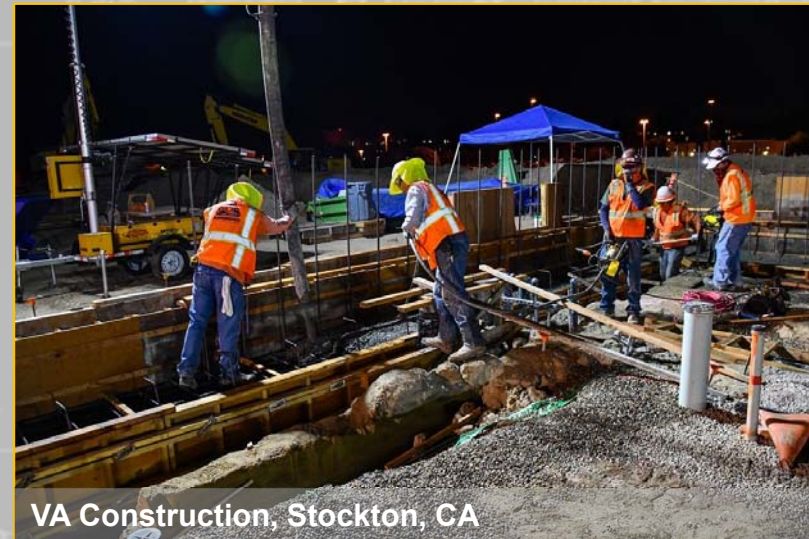
US Army Corps
of Engineers®



Military Ocean Terminal - Concord



COVID-19 Alternate Care Facility, Los Angeles area



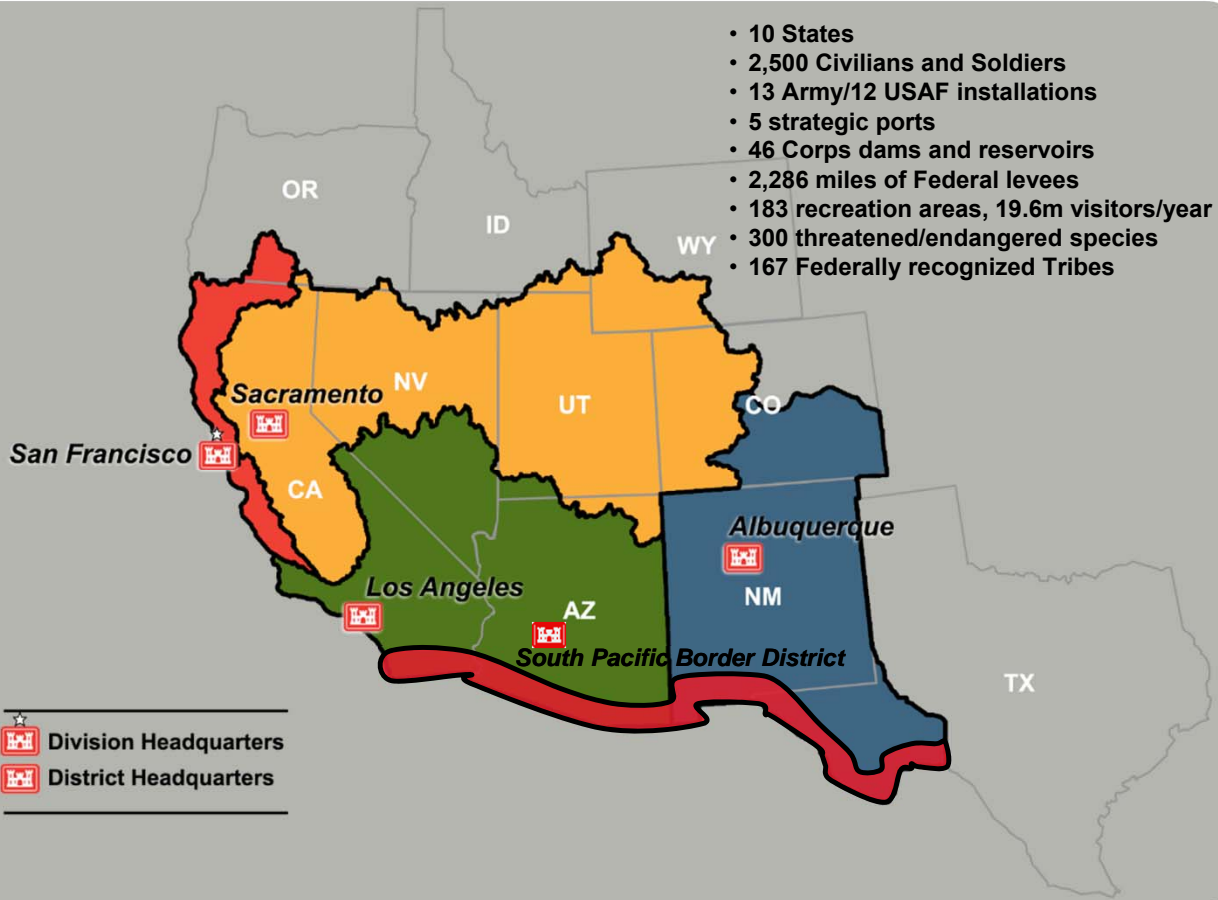
VA Construction, Stockton, CA



SOUTH PACIFIC DIVISION DISTRICT BOUNDARIES



- 10 States
- 2,500 Civilians and Soldiers
- 13 Army/12 USAF installations
- 5 strategic ports
- 46 Corps dams and reservoirs
- 2,286 miles of Federal levees
- 183 recreation areas, 19.6m visitors/year
- 300 threatened/endangered species
- 167 Federally recognized Tribes



Division Headquarters
 District Headquarters



Brigadier General
Paul E. Owen

Commander and Division Engineer
South Pacific Division

Division Facts:

Established in 1888, the South Pacific Division is one of the Corps' nine regions nationwide.

Five operating Districts, headquartered in Los Angeles, Sacramento, San Francisco, Albuquerque and Phoenix provide federal and military engineering support in California, Arizona, Nevada, Utah, New Mexico and in parts of Colorado, Oregon, Idaho, Wyoming and Texas.

The civil works program is oriented around major regional watersheds and leverages federal resources for navigation, flood damage reduction and ecosystem restoration. Major river basins include the Sacramento, San Joaquin, Santa Ana, Colorado and Rio Grande, which are governed by complex water rights. Water resources are vital to agriculture, urban development, natural ecosystems, Tribal interests, and recreation.

There are more than 300 threatened and endangered species in the region. We issue regulatory permits under the Clean Water Act for development in the nation's waters and wetlands, balancing environmental stewardship with the need for economic and urban growth. The Corps works in partnership with other federal agencies, state governments and local communities on collaborative solutions to these complex water resource issues.

DIVISION LEADERSHIP



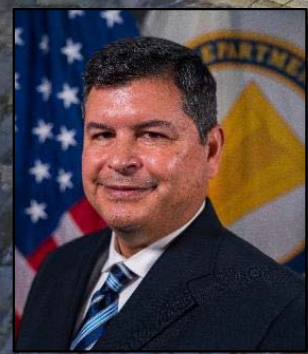
BG Paul E. Owen, PE
Commander



COL Torrey A. DiCiro, PE, PMP
Deputy Commander



Ms. Cherec Peterson, MPA, SES
Director of Programs



Mr. John Moreno, PE, SES
Regional Business Director

DISTRICT COMMANDERS



LTC Patrick M. Stevens V, PE, PMP
Albuquerque District



COL James Hendrix
Sacramento District



COL Julie Batten, PMP
Los Angeles District



LTC John Cunningham, PE, PMP
San Francisco District



COL Toni Gant, PMP
South Pacific Border District



PEOPLE / MISSION / TEAMWORK



South Pacific Division
US Army Corps of Engineers

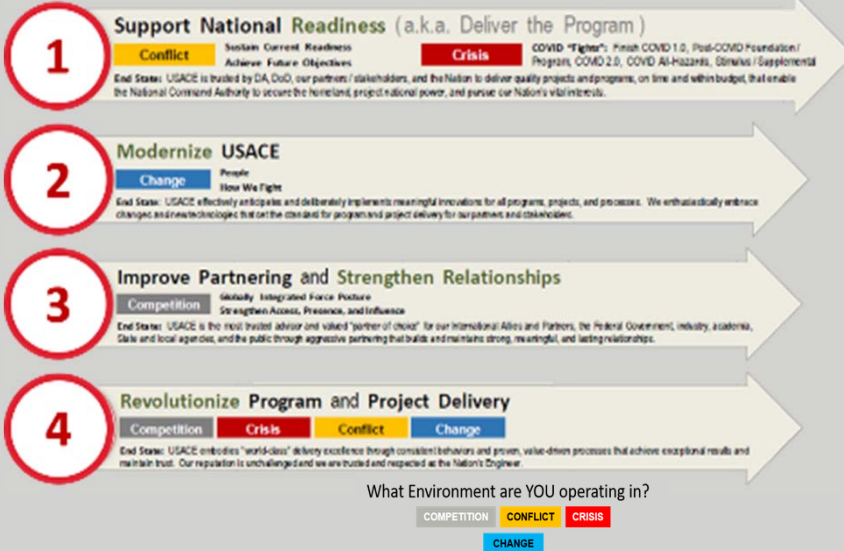
VISION: SPD provides **QUALITY** Engineering Solutions for the Nation's toughest challenges.

MISSION: As a Regional Team, **DELIVER THE PROGRAM** in collaboration with our partners to support the National Defense Strategy, Enable Economic Development, Protect The Environment, and Respond to Disasters.

SPD STRATEGIC PRIORITIES:

- Support National Defense Strategy
- Enable Economic Development
- Protect the Environment
- Respond to Disasters

55th Chief's Priorities



SPD FOCUS AREAS:



- PDBP Deliver The Program^{1,4}**
- Technical Excellence^{2,4}**
- Workplace Transformation**
- Stakeholder Engagement^{3,4}**
- Talent Management^{1,2,3,4}**



DELIVER THE PROGRAM

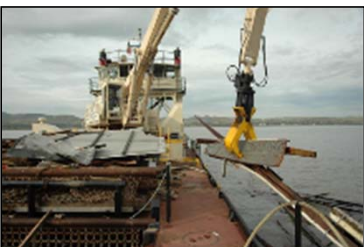
Civil Works



SF Waterfront Study



Lake Isabella



SF Bay Navigation



LA County Drainage Area



Planning for the Future

Mega Projects

Isabella Dam has demonstrated success in enterprise integration as well as innovation in design and procurement strategies. Central Valley is a Mega System.

Bipartisan Budget Act Storm Supplemental

\$2.5B in Long Term Investment construction program, focused on flood risk resiliency. Fully-funded projects include American River Common Features, Folsom Dam Raise, Yuba, Isabella, Tule River/ Success Dam, South San Francisco Shoreline, Santa Ana River Mainstem and Alamogordo.

New Start Investigation and Construction Projects:

Oakland Inner Harbor Turning Basin Widening Study; Dry Creek (Warm Springs) Restoration; San Joaquin River Basin, Lower San Joaquin

Regulatory Program:

Water resources are vital to agriculture and urban development, Tribal interests, recreation and natural ecosystems in a region with more than 300 threatened and endangered species. In FY2019, the SPD Regulatory program processed over 3,060 General Permits and 395 Individual Permits.

San Francisco Bay:

Dredging millions of cubic yards annually and debris removal around SF Bay is crucial for the safety and operational capacity of the Bay Area waterways from San Francisco to Sacramento.

Los Angeles County O&M:

SPL operates and maintains a very large system of dams, levees, and channels in partnership with LA County including Whittier Narrows Dam (DSAC-1). As a result of the condition of the LACDA facilities and its risk to communities, this project has become the highest funded O&M project in the entire South Pacific Division.

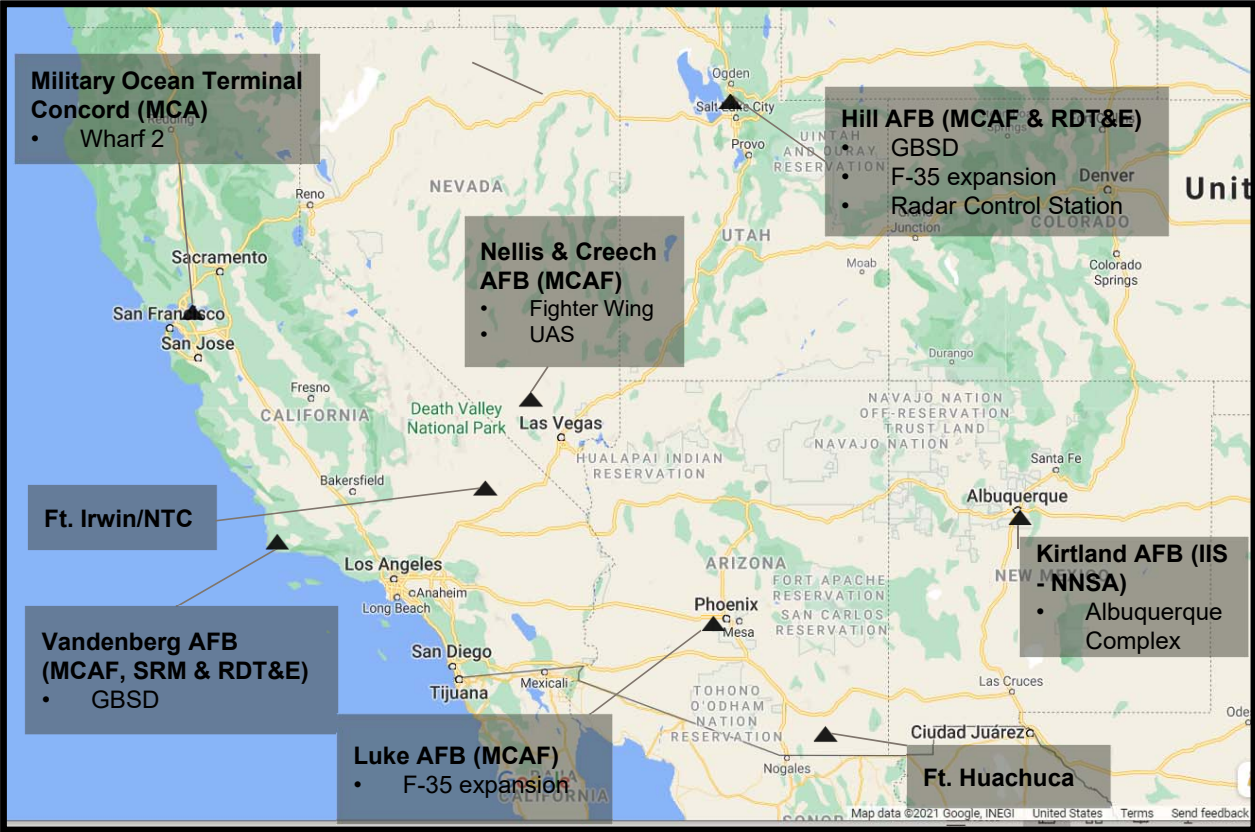
SPD's Study Portfolio:

SPD's study portfolio has 18 ongoing flood risk management, ecosystem restoration, and navigation SMART studies, as well as vigorous study programs focusing on tribal partnership, watershed assessments, and floodplain management services.



DELIVER THE PROGRAM

Military Programs



Diverse Military Mission – California, Nevada, Arizona, Utah and New Mexico

Supporting Military Construction, Real Estate & Environmental Remediation for:

- 13 Army Installations
- 12 Air Force Bases
- 6 Reserve/National Guard Facilities

Overall Military program (MILCON, reimbursable, IIS, environmental) execution \$1B/yr average – FY20 thru FY24+

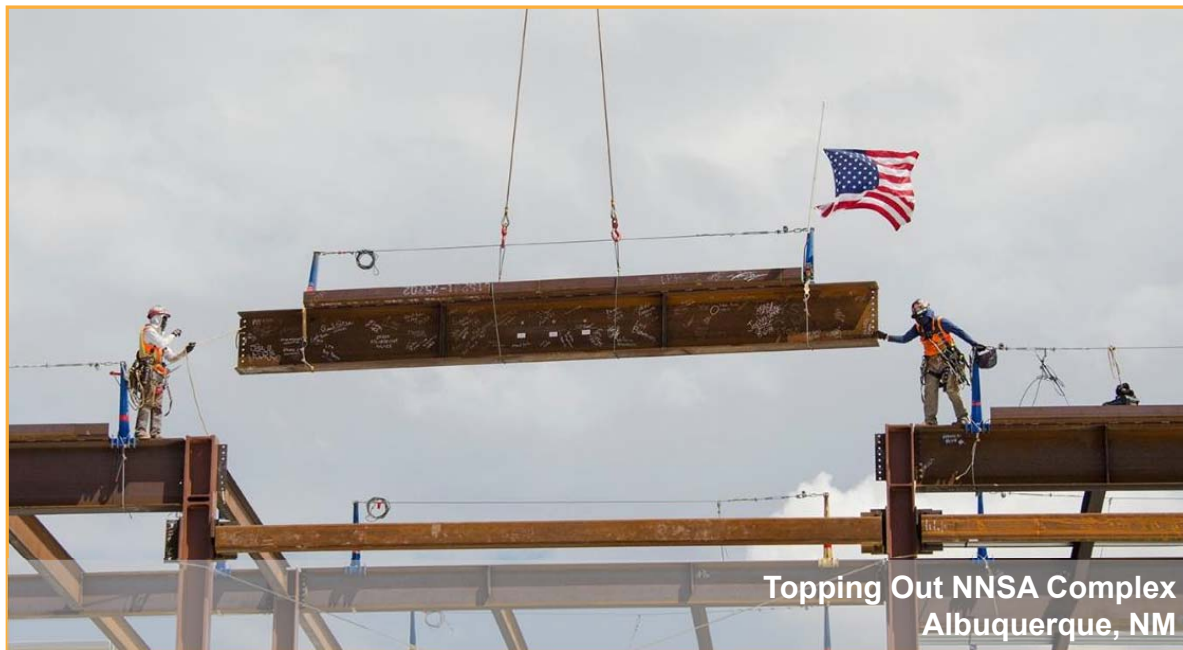
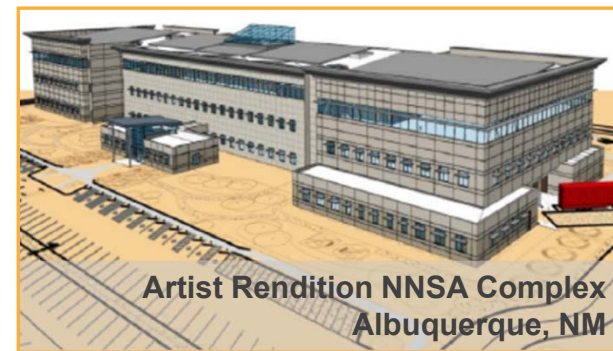
Growing Ground Based Strategic Deterrent (GBSD) Program and F-35 Expansion (\$1B+)

Continued Partnership with Interagency & International Services (IIS) Program – National Nuclear Security Administration (NNSA)



DELIVER THE PROGRAM

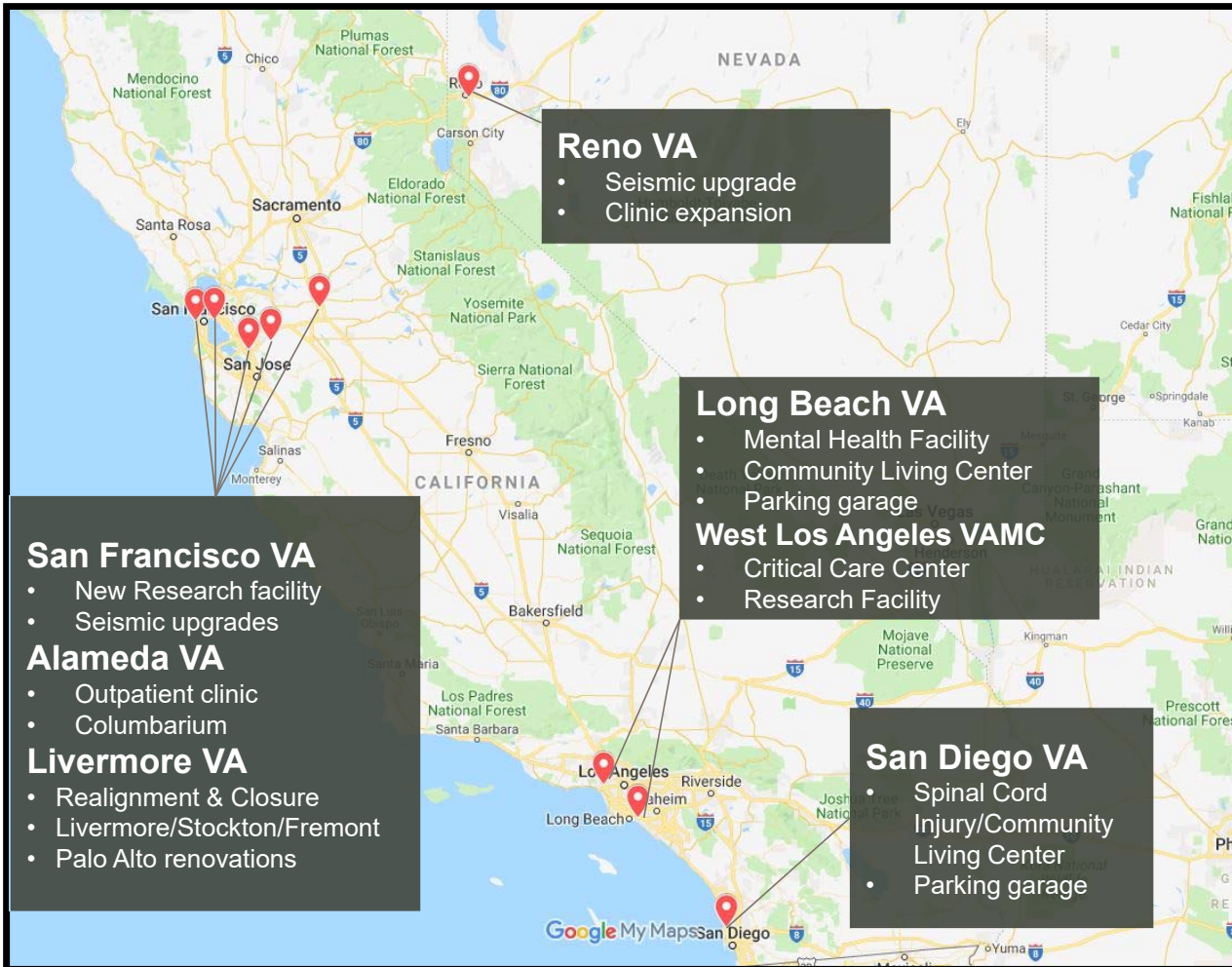
Interagency Support





DELIVER THE PROGRAM

Department of Veterans Affairs



South Pacific Division is partnering with the Department of Veterans Affairs to build world class medical facilities supporting our Veterans.

San Francisco VAMC

(\$346 M, FY16-28)

Livermore VAMC Realignment

(\$427 M, FY16-25)

Reno VAMC

(\$214 M, FY17-24)

Alameda Point CBOC/Columbarium

(\$238 M, FY16-26)

Long Beach VAMC

(\$317 M, FY15-23)

San Diego VAMC

(\$252 M, FY15-23)

West Los Angeles Critical Care Center

(\$1 B, FY17-27)

West Los Angeles Research Bldg.

(\$400 M, FY23-FY26)

Palo Alto VAMC

(\$350M, FY23-30)



DELIVER THE PROGRAM

South Pacific Border District



- Task Force Barrier established after Executive Order signed Feb. 15, 2019.
- South Pacific Border District established Dec. 6, 2019, as part of South Pacific Division.
- AOR stretches approximately 1,200 miles from San Diego, California, to El Paso, Texas.
- As of January 2021, 457 miles of barrier were built.
- All work has been Paused and contracts are Suspended.
- Awaiting further guidance on Way-Ahead





DELIVER THE PROGRAM

Emergency Management



**Public Law 93-288
Stafford Act**
(National Response Framework)

Public Works and Engineering assistance to
Presidentially-declared DHS/FEMA-led national response
“Natural Disaster / Emergency Response”

Public Law 84-99 (USACE Authority)
(Flood Control & Coastal Emergency Act of 1955)
Prepare / Respond / Repair Damaged Flood Works
“Flood Fight”

USACE IS “FEMA’S ENGINEER” EMERGENCY RESPONSE FUNCTION (ESF) #3



Emergency Power
(249th Prime Power Battalion)



Structural Safety for
Urban Search & Rescue



Preparedness through
Interagency
Coordination



Technical Assistance /
Sandbag Provision



Critical Public Facilities
& Infrastructure
Assessment



Temporary Roofing
“Blue Roofs”



Emergency Levee Repair /
Construction under PL 84-99



Debris Management



Temporary Housing



DELIVER THE PROGRAM

Wildfire Response



Since 2017, USACE SPD has supported the recovery of an average of 1-2 major wildfires per year between August-January.

2017

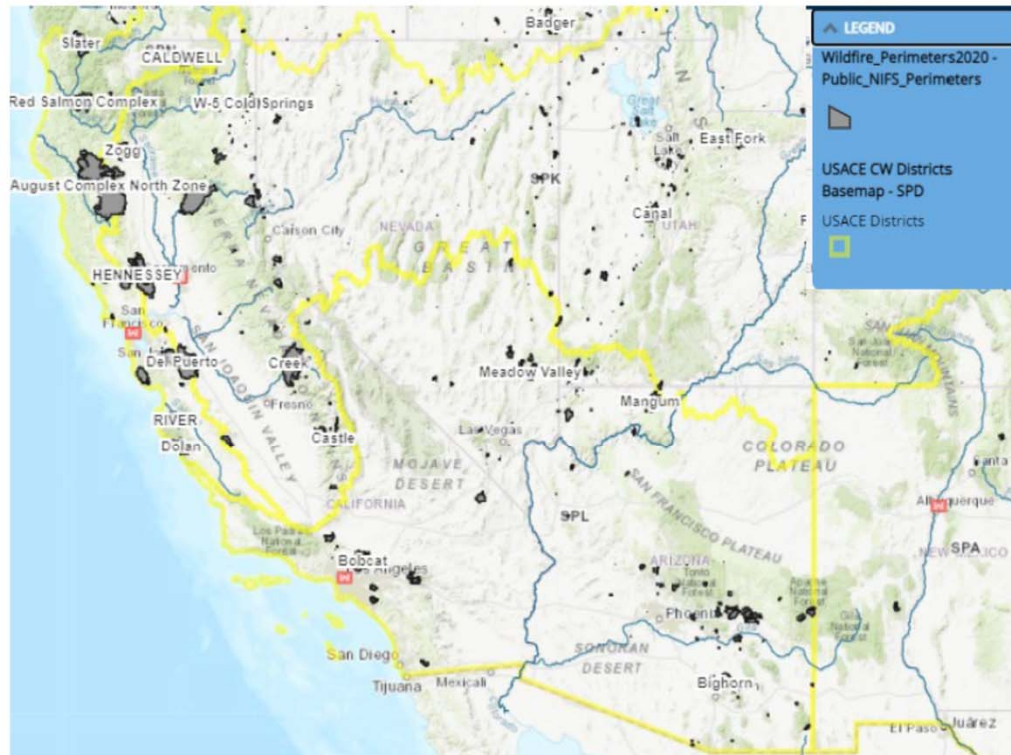
FEMA Declarations: 3
Expended: \$770M
Personnel: 949

2018

FEMA Declarations: 2
Expended: \$26M
Personnel: 330

2020

FEMA Declarations: 2
Expended: \$3.2M
Personnel: 84



Missions

- Private Property Debris Removal
- Housing
- Debris Removal
- Technical Monitoring: Housing, Debris, Tree Removal
- Infrastructure Systems Recovery Support

Impacts

- Cascading events: landslides and contaminated watersheds.
- Complex, political and costly operational environments.



DELIVER THE PROGRAM

COVID-19 Federal Response



Alternative Care Facilities:

- Oversaw ACF assessments in 6 states and multiple tribal nations.
- Completed 150 assessments for decision makers.
- Awarded 8 contracts to construct ACFs
- Completed build-out of 8 ACFs across the region.

Assisting Los Angeles-area Hospitals

- Provided rapid assessments of 12 hospitals
- Contracted construction at three
- Work extends ICU capacity and O₂ distribution





LOOKING FORWARD





BUILDING STRONG





Q&A





Thank You Large Business
Sponsor!!!



AECOM





Thank You Small Business Sponsor!!!



GENTERRA
CONSULTANTS, INC.

MGE ENGINEERING, INC.





Thank You!

