



SAME NoVA Post 8th Annual Business-to-Business (B2B) Engagement

National Museum of the U.S. Army at Fort Belvoir
October 5, 2023



Photo By Duane Lempke



SPECIAL THANKS TO OUR POST'S 8TH ANNUAL BUSINESS-TO-BUSINESS (B2B) ENGAGEMENT SPONSORS





FEDERAL
MARKET SECTOR





MARK CORRELL, PE
Federal Strategy Director
Mark.Correll@hdrinc.com



SUANNE COLLINSWORTH
Federal Marketing Manager
Suanne.Collinsworth@hdrinc.com

Long-Term Bridge Performance (LTBP) Program,
Federal Highway Administration, Nationwide

Blue Ridge Parkway Rehabilitation,
FHWA | Eastern Federal Lands Highway Division, NC



Pier Charlie Replacement, *Naval Station Guantanamo Bay, Cuba*



Multi-Mission Dry Dock, *Puget Sound Naval Shipyard, WA*



Taxiways Whiskey and Sierra, Joint Base Andrews, MD



Aircraft Runway, Diego Garcia



Riverina Redevelopment, Victoria and NSW, Australia



Hangar Renovation, Keflavik, Iceland



Trans-Canyon Water Distribution Pipeline, *Grand Canyon National Park, AZ*



Folsom Dam Joint Federal Project, CA



National Park Service Seawall Reconstruction, *Washington, DC*



Stormwater Management Plans and Design Development, *U.S. Military Academy, West Point, NY*



Hydropower Services, *USACE Portland, Columbia River, WA*



PV and Battery Storage, *DLA Susquehanna, PA*



Standard Mine Superfund Cleanup, EPA, Crested Butte, CO



Environmental Restoration, DLA, Memphis, TN



Facility Condition Assessments, *U.S. Air Force, Germany, Spain, Turkey*



Flightline Development Plan, *Naval Air Station Sigonella, Italy*



13th Combat Aviation Brigade Barracks, *Fort Carson, CO*



129th Rescue Wing Relocation, *Moffett Field, CA*



Special Operations Forces (SOF) Desert Training Facility, *Oceanside, CA*



East Campus Building #4, Ft Meade, MD



Tactical Unmanned Aerial Vehicle (TUAS) Facility, Buckley AFB, CO



Cyber Center of Excellence, U.S. Army, Fort Gordon, GA



HDR EDUCATION SCIENCE & TECHNOLOGY (ES&T)

Joint Headquarters Building, NAVFAC, Djibouti, Africa



Air Mobility Command HQ Renovation, Scott AFB, IL



HDR EDUCATION SCIENCE & TECHNOLOGY

Border Patrol Station & Checkpoint, *DHS | Customs and Border Protection, Comstock, TX*



Walter Reed Nat'l Military Medical Center, *Bethesda, MD*



Rhine Ordnance Barracks (ROB) Medical Center, *Landstuhl, Germany*



Naval Hospital Replacement, *Camp Pendleton, CA*



VA Outpatient Clinic & Cemetery, *Alameda Naval Air Station, CA*







ABOUT OUR IMPACT

ESTABLISHED
IN
1917



12,000+
EMPLOYEE OWNERS

 **200+**
OFFICES GLOBALLY

400+ LOCAL
STAFF

322
VIRGINIA

50
MARYLAND

31
D.C.

11 LOCAL
OFFICES



ENR's Top 500 Design Firms (2023)

- # 6 – Overall
- # 2 – Health
- # 3 – Pure Design
- # 5 – Transportation
- # 5 – Water
- # 5 – Marine and Ports
- # 5 – Data Centers



QTS Group LLC
EHS capabilities

Presented by
Ricardo Mong

NAICS code: 541620

SAME NoVA Post 8th Annual Business-to-Business (B2B) Engagement



DATE: Thursday, October 5th, 2023 – 1:00 – 7:00pm

LOCATION: National Museum of the U.S. Army at Fort Belvoir



Photo By Duane Lempke

ABOUT US

- QTS empowers government agencies and initiatives through specialized EHS capability in a comprehensive scope of offerings and expertise. Our mission is to help clients protect what matters most in people, assets, and communities, while being budget-conscience stewards of environmental best practices.



Corporate Office

Charlotte, North Carolina

Satellite Offices

Atlanta, Georgia

Birmingham, Alabama

Nashville, Tennessee

Philadelphia, Pennsylvania

Tampa, Florida

St. Paul, Minnesota

MARKET SEGMENTS



CONSTRUCTION/CONTRACTORS



UTILITIES/POWER



MANUFACTURING/INDUSTRIAL



GOVERNMENT

OCCUPATIONAL HEALTH AND SAFETY COMPLIANCE SERVICES

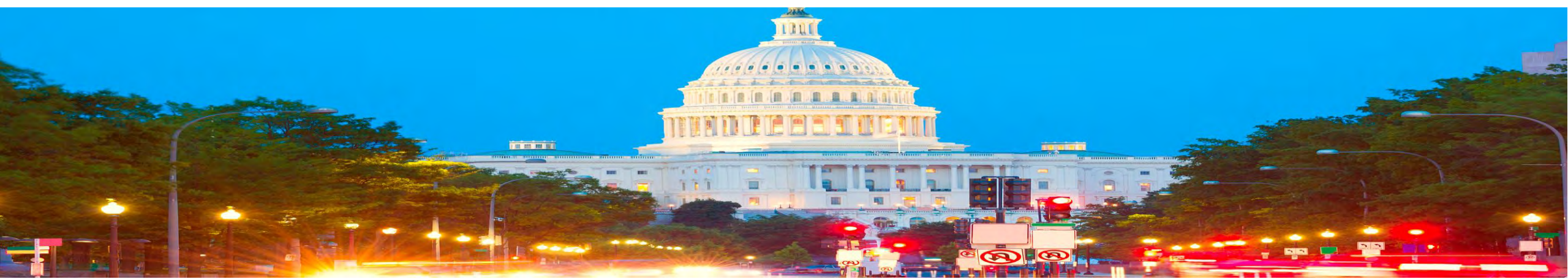
- ✓ Occupational Health & Safety Audits
- ✓ Risk Assessment and Management
- ✓ Job Hazard / Process Hazard Analyses
- ✓ Machine Guarding / Lockout/Tagout Assessments
- ✓ Environmental, Occupational Health & Safety Program Development and Implementation
- ✓ Respiratory Protection & Fit-testing
- ✓ Hazardous Materials Management
- ✓ Laboratory Safety & Chemical Hygiene
- ✓ OSHA Process Safety Management Compliance
- ✓ Emergency Response & Contingency Planning

ENVIRONMENTAL COMPLIANCE SERVICES

- ✓ EPA Risk Management Program (RMP)
- ✓ Spill Prevention, Control, and Countermeasure (SPCC) Plans
- ✓ NJDEP Toxic Catastrophe Prevention Act (TCPA)
- ✓ NJDEP Discharge Prevention Containment and Countermeasure (DPCC)
- ✓ Air Permitting
- ✓ Toxic Release Inventory (TRI) Reporting
- ✓ NJDEP Release Pollution Prevention Reporting (RPPR)
- ✓ Community Right to Know (CRTK) Reporting
- ✓ Hazardous Waste Reporting (Annual / Biennial)
- ✓ ISO 14001 Support

GOVERNMENT PROJECT SERVICES

- Industrial Hygiene & Occupational Health
- EHS compliance audits and support
- CIH guidance, documents preparation, and review.
- Exposure assessments
- Contractor orientation; gap analyses; site safety audits and inspections.
- Ergonomic evaluations and assessments.
- Respiratory protection fit testing and training.
- Environmental Management
- Hazardous Waste Annual and Biennial Reporting
- SARA 312 and 313 Reporting;
- Environmental Management Systems (ISO 14001)
- Toxicology support
- Environmental, Health & Safety Compliance Auditing
- Training – Dangerous Goods Shipping (DOT, IATA)
- Spill Prevention, Control, and Countermeasure (SPCC) Planning



FACILITIES support

- ✓ Occupational Health and Safety Inspections
- ✓ Risk Management surveys
- ✓ Industrial Hygiene surveys and exposure assessments



QUESTIONS

Presented by:

Ricardo Mong

Email: rmong@qtsgroup.com

Phone: 813-403-8460

Danaila Paspalanova, CEO

danaila@qtsgroup.com

917 – 376 -6271





**MERDON
STRATEGIES**

Experience and Capabilities





Christine Merdon, P.E.
CEO/President

EXPERIENCE

25+ Years Public and Private Experience:

- Architect of the Capitol (Acting Architect of the Capitol, and Deputy Architect of the Capitol)
- U.S. Navy
- McKissack and McKissack
- Clark Construction

EDUCATION

University of Maryland

- B.S. Civil Engineering
- M.S. Civil Engineering
- Ph.D. Candidate Civil Engineering

LICENSES AND CERTIFICATIONS

WOSB (submitted)

Professional Engineer

Associate Architect,
American Institute of Architects

Member – National Academy of
Construction

Former DOD Top Secret (SCI)
Clearance and Yankee White Access



**PROJECT
EXPERIENCE**

DAILY NEWS

No. 48,725

THE BEST SELLING NEWSPAPER IN THE WORLD

Today's Edition

National - World - Business - Lifestyle - Travel - Technology - Sport - Weather



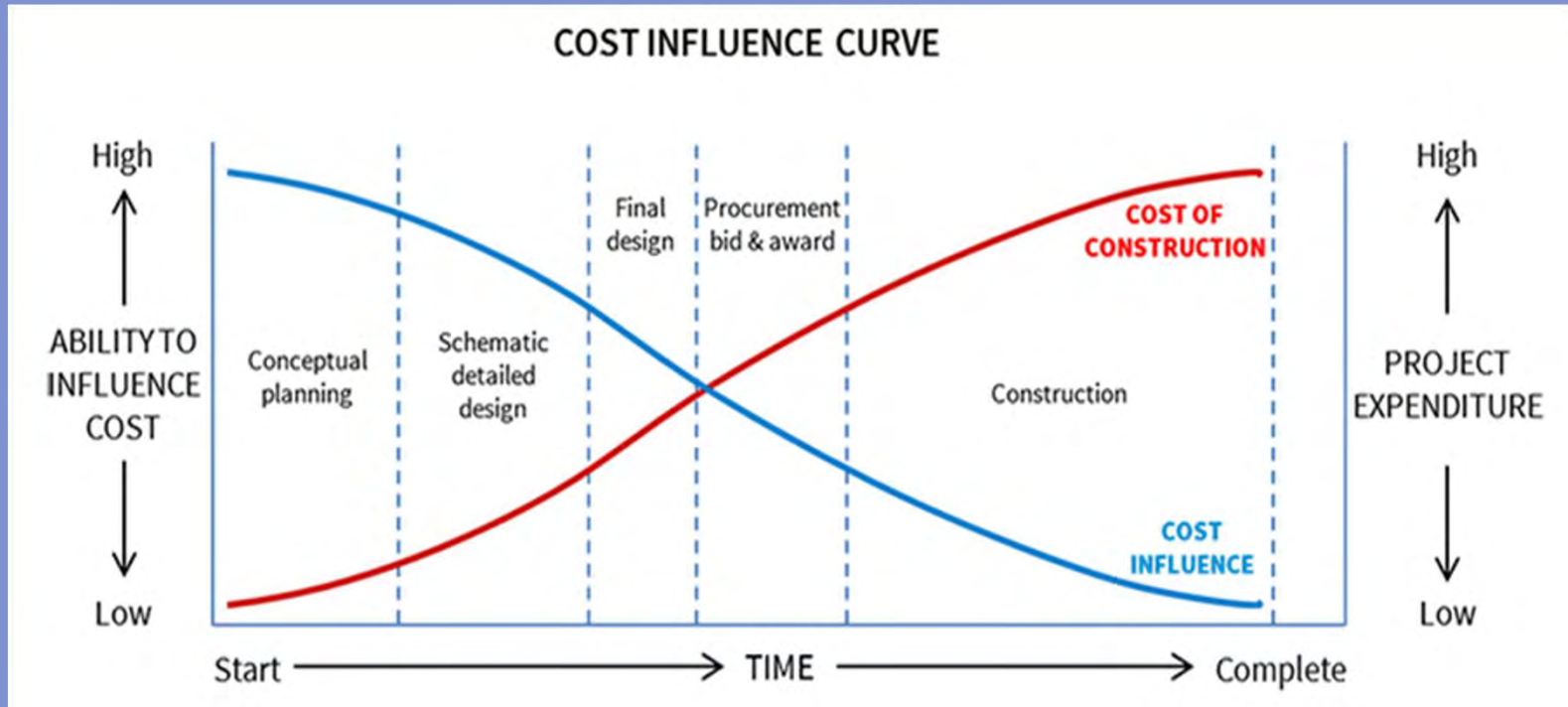
9 of 10
Construction
Projects do
not finish on
time.

*Journal of Construction
Engineering*

The Problem

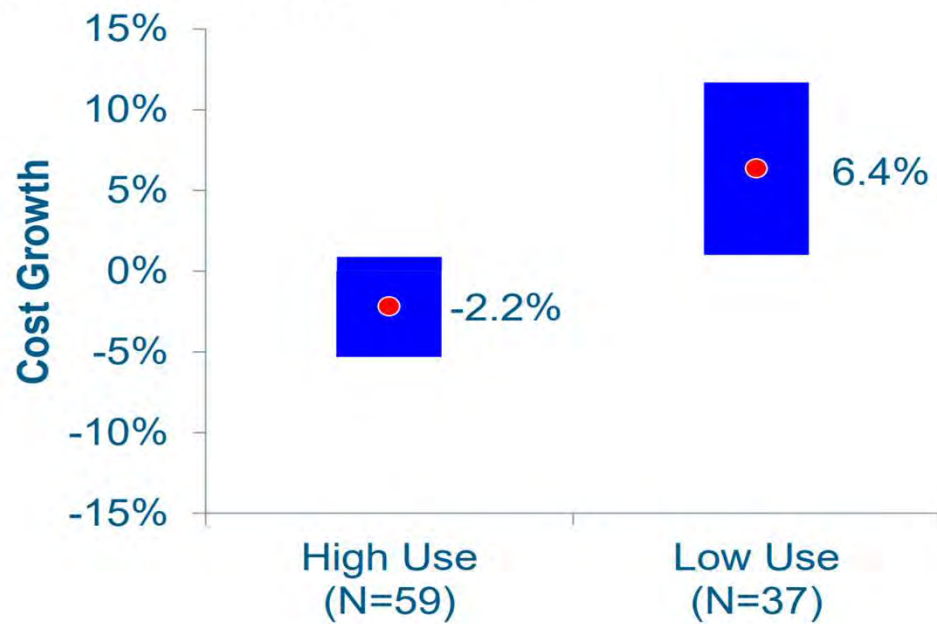
- Projects completed late and over budget

OWNER'S INFLUENCE



FRONT END PLANNING

Impact of Front End Planning Cost Growth: Owners



Ref: BMM 2010-4 CII Value of Best Practices Report

U.S. Capitol Dome and Rotunda Restoration

Completed 2017

\$106,000,000

- **12,800 inches** of cracked cast iron repaired
- **1,215 gallons** of paint
- **1.1 million lbs.** weight of scaffold
- **75,000+** pieces of equipment
- **52 miles** of scaffold pipe

CASE STUDY



CASE STUDY

Up Front Planning Utilization

- ✓ Project Planning
- ✓ Risk Management
- ✓ Acquisition Strategy
- ✓ Partnering
- ✓ Stakeholder management
- ✓ Communication Planning
- ✓ Teambuilding



RESULTS

- ✓ Completed on Time
- ✓ Completed at Budget
- ✓ No lost time Injuries





**MERDON
STRATEGIES**

SERVICES

SERVICES

Program and Construction Management

- ✓ Owner Advisory Services
- ✓ Project Planning
- ✓ Risk Management
- ✓ Acquisition Strategy
- ✓ Partnering
- ✓ Stakeholder management
- ✓ Communication Planning
- ✓ Teambuilding





NAICS CODES

- 236220-Commercial and Institutional Building Construction
- 541611- Administrative Management and General Management Consulting Services
- 541618 - Other Management Consulting Services

Thank You!



Contact Information:
Christine Merdon
merdoninc@outlook.com
703-593-1719



PROCON
INTERNATIONAL

4795 Meadow Wood Lane, Suite
125E, Chantilly, VA 20151

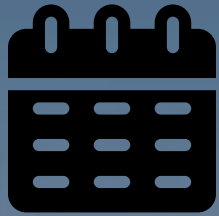
Tel.: 571-799-9720

Fax: 949-449-8988

aziz.elham@procon-intl.com

www.procon-intl.com

WHO WE ARE



2014
Texas



Small Business



Construction
Services



Global
foot print



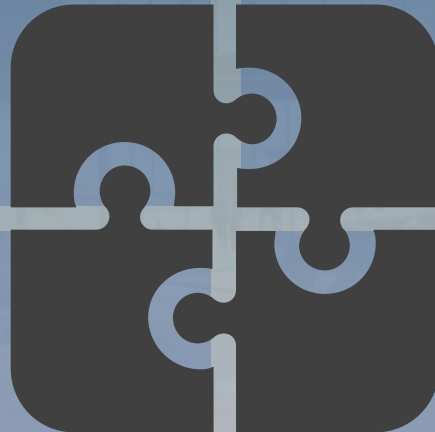
Redland
Sister company



CORE CAPABILITIES

Design-build

Design-bid
build



Project
Management

ESG
Practice

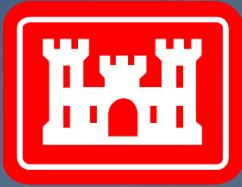
OUR FOOTPRINT



USA, South Sudan, Tajikistan and Afghanistan

Virginia , Texas, California

OUR CLIENTS



CURRENT JV PARTNERS

R2BUILD

GREENTECH USA
LLC

NAICS Codes

- 236220
- 238990
- 221320
- 562790



ONGOING PROJECTS

FA667522C0004

US Air Force

Naval Air Station Joint
Reserve Base Fort
Worth, TX

Renovate building

Design-bid-Build

\$5M+

72066822C00005

(USAID)

Compound Wastewater
Treatment Plant

Installation(WWTP)

US Embassy South Sudan

Design-Build

\$1.5M+

W911SA22C2002

US Army

Alameda County, CA

Parking lot construction

Design-bid-Build

\$1.2M+



ONGOING PROJECTS

W9123622C2041

Us Army Corps Of
Engineers(USACE)

Defense Supply
Center Norfolk District
Richmond VA

Renovate building
Design-bid-Build

\$1.7M+

260-17905-008

Virginia Community
College system
Richmond VA

New Automotive Facility
Design-bid-Build

\$4.3M+

F5A3SG3163A002

US Air Force

Naval Air Station Joint
Reserve Base Fort
Worth, TX

Repair Aircraft Wash
Rack

Design-bid-Build



STRATEGIC PARTNERSHIPS

**Small
Businesses**

Bigger Opportunities

**Large
Businesses**

Small Business Set-Aside Projects



A/E Firms

Teaming Partnerships



THANKS!

I look forward to talk with you more.

aziz.Elham@procon-intl.com

949-413-7921

www.procon-intl.com



WOODS • PEACOCK

ENGINEERING CONSULTANTS

← Gates 53, 55, 57, 59

Gates 54, 56, 58 →

WOLFGANG PUCK

WOLFGANG PUCK
BAR-BITES

SAME NoVA Post 8th Annual B2B Event

October 5, 2023

Society of
SAME
American Military Engineers

OUR SERVICES

Structural Engineering
Blast | AT/FP

OUR CERTIFICATIONS



Small Local Business Enterprise
(SLBE)

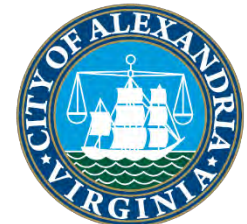


WOSB CERTIFIED





Smithsonian







WOODS · PEACOCK
ENGINEERING CONSULTANTS

**Ronald Reagan Washington National Airport
Terminal 2, Concourse E, Arlington, VA**

NEW DESIGN





WOODS • PEACOCK
ENGINEERING CONSULTANTS

**Naval Facilities Engineering System Command
(NAVFAC)**

RENOVATION

















WOODS • PEACOCK

ENGINEERING CONSULTANTS



CORY SAUER, PE
Senior Principal
cory@woodspeacock.com



SETH TAKOCH
Associate
seth@woodspeacock.com



US Federal 2 Minute Brief

Presented by:
Will Bynum, PE



Stantec at a glance

1954

Stantec
founded

\$7 billion

Market
Cap (\$USD)

28,000

Employees
globally

85+

Years serving
US Federal Clients

400

Locations
worldwide

224

US Office
Locations

48

US States with
Stantec offices

18

Countries
we operate in

7

Continents
we operate in



Stantec's Major Services With the US Federal Government and Teaming Partners

- Full A/E Services for All Types of Buildings and Related Structures
- Military, Community and Site Planning
- Full A/E Design Services for a Variety of Civil Works Projects
- Geotechnical Engineering and Land Surveying
- Program and Construction Management- PM/CM
- Environmental, NEPA, Permitting
- Special Studies, Investigations and Engineering Analysis
- Design Build Services- Designer of Record
- Development of Design Build RFPs
- Construction Management/Title II Services
- Cost Estimating
- Alternative Financing and Delivery



Battalion Operations Facility (BOF) Humphreys Engineer Center Alexandria, VA

USACE Baltimore District

- New 42,800 SF, Three-Level SOCOM Building
- \$32M Construction Value
- Programming Charrettes and Concept Planning and Full AE Design for Design Build Procurement
- Significant Secure Space
- Providing Construction Phase Services Support to USACE



Humphreys Engineer Center, Alexandria, Virginia





Academic Instruction Facility Marine Corps Base Quantico, VA

NAVFAC Mid Atlantic

- New 64,700 SF, Three-Story Academic Building for Training and Education Command (TECOM)
- \$25M Facility Delivered by Design Build
- LEED Silver
- Design Focused Around Maximizing Interior Clear Space for Flexibility





New Main Gate Access Control Point Joint Base Langley-Eustis (Eustis), VA

USACE Norfolk District

- New 5-Lane \$18M ACP to Address Multiple, Non-Compliance AT/FP and Safety Standards
- Required Additional Land Acquisition from the City of Newport News, Resulting in a 13-Acre Site
- Multiple Buildings to Support the ACP
- Multiple Phases to Maintain Operations During Construction

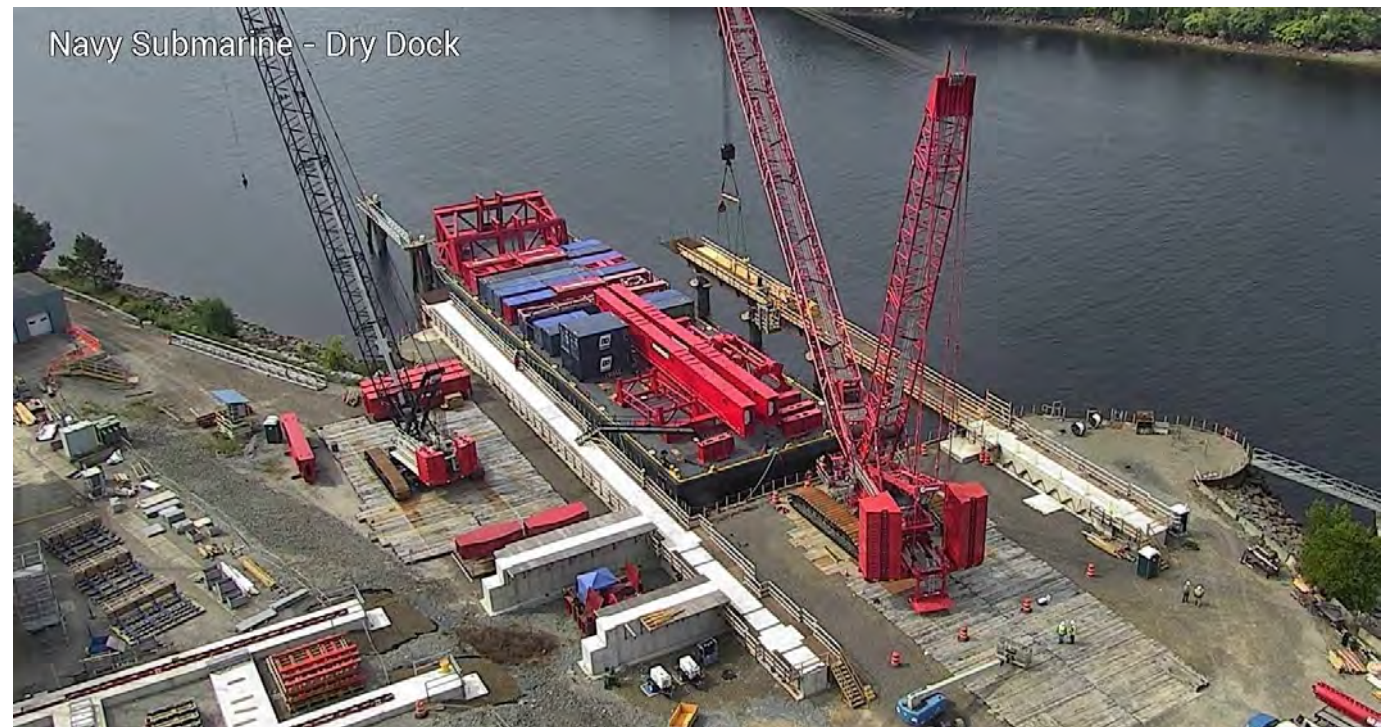
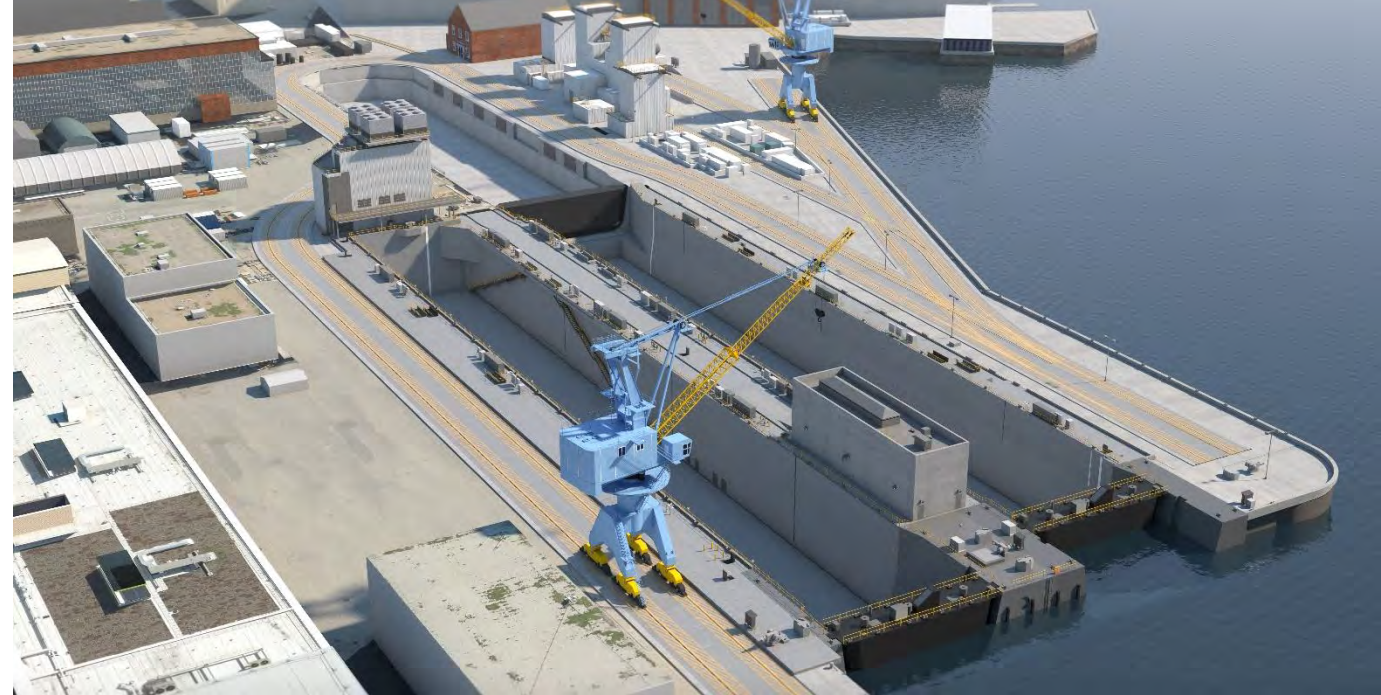




Portsmouth Naval Shipyard (PNSY) Multi-Mission Dry Dock #1 Kittery, MA

NAVFAC Mid Atlantic

- Part of the Navy's Shipyard Infrastructure Optimization Program (SIOP)
- \$1.8B Construction Value
- First Dry Dock Facility Designed for Navy Since WWII
- Construction Scheduled for Completion in 2028





Special Operations Urban Combat (SOUC) Training Facility Fort Barfoot (formerly Pickett), VA

USACE Norfolk District

- 126,000 SF of Buildings, 100 Acre Site
- \$52M Estimated Construction Cost
- Full AE Services for Buildings, Site, Surveys, Geotechnical, Environmental Assessments, Permitting
- 26 Buildings Within the SOUC Village and Remote Tactical Operations Center
- Commissioned to Provide a Real-World Training Facility for Naval Special Warfare Group 2 (NSWG-2)





Landside Remediation Philpott Dam Bassett County, VA

USACE Wilmington District

- Historic Landslide in 2022 that Damaged the Switchgear Building at the Base of the Slope
- Remedial Design Includes:
- Regraded Slope with Loose Rock Mitigation
- 350 foot Tied Back Secant Shaft Wall
- Stormwater Detention
- \$37M Construction Cost, 4-Year Period

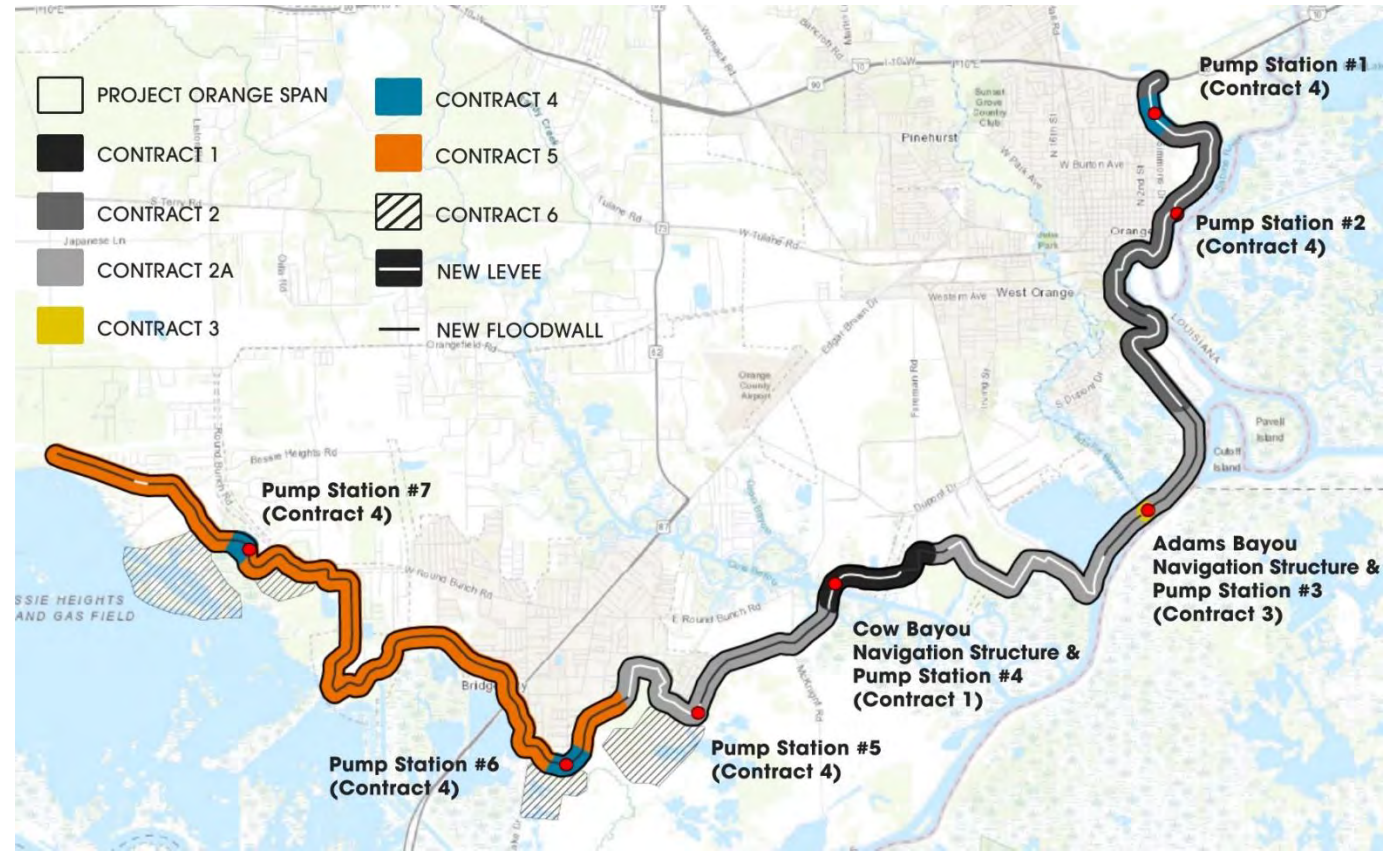




Sabine Pass to Galveston Bay Coastal Storm Risk Management and Ecosystem Restoration

USACE Galveston District

- 26.7-mile-long levee and floodwall system
- Increases preparedness to respond to natural disasters and disturbances
- Increase resistance to long-term impacts due to climate change –i.e.
 - sea level rise, land subsidence, abnormally heavy rainfall events, and regional drought
- 8-year design project
- \$1.9B Construction Effort
- Lead Designer

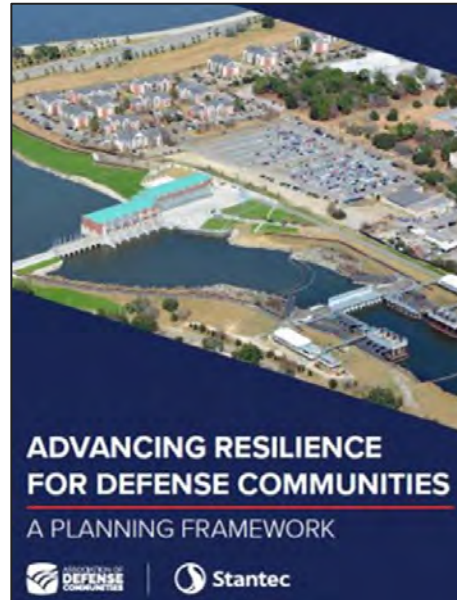




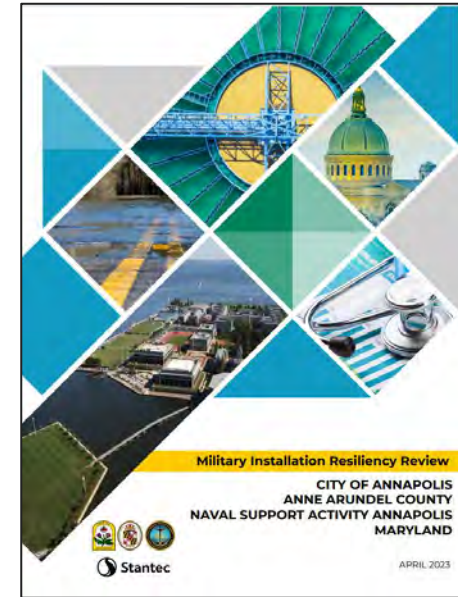
Defense Community Planning

Multiple community partners

- Defense Community Planning Supporting Hosted Military Installations
- Installation Resilience Planning
 - Community-Driven Planning Projects
 - Protect and Preserve Military Readiness and Defense capabilities
 - Support Continued Community Growth and Economic Development



Planning a resilient future for defense communities



NSA Annapolis Military Installation Resiliency Review



State of Maryland Military + Community Compatible Use Website and Handbook



Stantec's Key Federal Clients

Department of Defense

- Army/US Army Corps of Engineers
- US Air Force/US Space Force
- US Navy/NAVFAC
- US Marine Corps

Civilian Agencies

- Department of the Interior
 - National Park Service
 - Bureau of Reclamation
 - Bureau of Land Management
 - US Fish & Wildlife
 - Bureau of Indian Affairs
- Department of State
- Department of Energy

- Department of Homeland Security
 - Federal Emergency Management Agency
 - US Coast Guard
 - Transportation Security Administration
- Department of Justice
- Department of Transportation
 - Federal Aviation Administration
 - Federal Transit Administration
- Department of Veterans Affairs
- Department of Agriculture
- General Services Administration, Public Buildings Service
- US Agency for International Development

- Millennium Challenge Corporation
- Tennessee Valley Authority
- Federal Highway Administration
- Environmental Protection Agency
- Health Resources & Services Administration
- US Postal Service
- Food & Drug Administration
- National Institutes of Health
- National Aeronautics and Space Administration
- National Science Foundation



SAME Northern Virginia Post 2023 Business-to-Business Event

**Presented by Evan Barman, PE, PMP
Business Development Director**



CCI General Contractors, LLC and BBNC

- CCI General Contractors, LLC is a small, disadvantaged, 8(a) company and subsidiary of Bristol Bay Construction Holdings LLC (BBCH), a holding company of Bristol Bay Native Corporation (BBNC), an Alaska Native Corporation with operations in construction, industrial services, government services, tourism, seafood, and in-region investments.
- BBNC was incorporated in 1972 through the Alaska Native Claims Settlement Act of 1971.
- BBNC includes over 11,000 Native shareholders.
- 35% of BBNC's profits are provided to Shareholders in the form of benefits. Benefits include dividends, jobs and training, scholarships, small business startup support, and educational benefits.
- Our dividends help defray the significant cost of living. See typical food pricing in the villages.

Current Prices in Naknek, AK (April 2022):

- Gallon of milk: \$17.49
- 12 pack of eggs: \$5.49
- 128 ounces of mayonnaise: \$33.69
- 128 ounce of apple cider vinegar: \$24.89
- 1 Frozen Pizza: \$17.79
- 2 Boxes, 35 ounces each of cereal: \$25.38
- 36 Cans of Cola Soda: \$39.99
- 28 Ounces of Creamy Peanut Butter: \$9.69
- 1 Pound of White Onions: \$4.29
- 42 Ounces of Oatmeal: \$12.89
- 92 Ounces of Laundry Detergent: \$38.99
- 8.8 Pounds of Dog Food: \$29.79



Lines of Business

CONSTRUCTION

- Sustainment Restoration Modernization (SRM)
- IDIQ/SATOC
- MACC/MATOC
- Design/Build and Design/Bid/Build
- \$500K - \$30M Typical Project Size

SELF-PERFORMANCE

- Civil Works
- Fuels Systems and Coatings
- Restoration Services
- Mechanical, Electrical, Plumbing (MEP) (FL Panhandle only)

FACILITY SUPPORT SERVICES

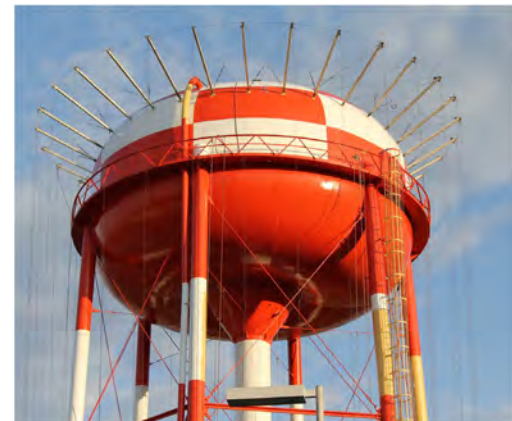
- Base Operating Support Services
- Security Management and Maintenance Services
- Maintenance and Repair Services

PROFESSIONAL SERVICES

- Construction Management Services
- Quality Assurance/Disaster Response
- Staff Augmentation
- Environmental Services

ENERGY SERVICES

- Utility Energy Service Contracts (UESC)
- Energy Savings Performance Contracts (ESPC)



CCI General Contractors, LLC

DIFFERENTIATORS

- ❖ Bonding Capacity: \$100M per single project, \$500M aggregate
- ❖ Majority of CPARS ratings received were “Exceptional” or “Very Good” in the last five years for our excellence in superior quality, effective project management, efficient scheduling, and safety-conscious execution
- ❖ High client retention, long-standing relationships with vetted trade partners, and teams stationed in your area
- ❖ Self-performance capabilities in addition to project management, safety, and quality control

Primary NAICS *237990, Other Heavy and Civil Engineering Construction*

Secondary NAICS 236210, 236220, 237110, 237120, 237130, 237310, 237990, 238220, 541330,
541990, 561210, 561621, 562910

Safety Ratings EMR: 0.78 DART: 0 TRIR: 0



Current Needs



- Now hiring local Project Managers, Site Supervisors, Quality Control Managers, and Site Safety and Health Officers in the local VA and DC Area
- Looking to partner with local small businesses for all self-performing trades
- Looking to develop relationships with local A/E firms



Point of Contact

Evan Barman, PE, PMP
Business Development Director
Telephone: (978) 809-8611
Email: ebarman@bbch-llc.com

Thank You!



CCI GENERAL CONTRACTORS, LLC

*A subsidiary of Bristol Bay Construction Holdings LLC, a holding company of
Bristol Bay Native Corporation, an Alaska Native Corporation.*

**8(a), Small, and Large Businesses
operating under the Aerostar, Herman,
SES, CCI, and CSI Brands**

www.bbch-llc.com



Trust Is Built.

www.primeeng.com

SAME Northern Virginia Post
8th Annual Business-2-Business Extravaganza
5 October 2023
Ed Chamberlayne, PE, PhD, F.SAME



Trust Is Built.

PRIME AE is an architecture, engineering, and construction management firm with designs for a better tomorrow.



Our Core Purpose

To make everything
around us better.
Our work matters.



Widespread Knowledge. Local Influence.

Community Starts Locally

Local presence, regional expertise, and national support.



22
Offices



10
States



485+
Strong



Multi Disciplinary Firm. Balanced Portfolio.



Architecture

A photograph of a modern, multi-story building with a curved facade and large windows, overlaid with a blue tint.



Engineering

A photograph of an industrial structure, possibly an offshore oil rig or a large crane, overlaid with a blue tint.



Master Planning

A photograph of a modern building complex with a large, curved walkway and a palm tree, overlaid with a blue tint.



Federal

A photograph of a large, flat, green landscape, possibly a field or a large-scale construction site, overlaid with a green tint.



Transportation

A photograph of a large, multi-level transportation structure, possibly a transit station or a large parking garage, overlaid with a blue tint.



Water

A photograph of a large, multi-level water structure, possibly a dam or a large-scale water treatment facility, overlaid with a blue tint.



Landscape Architecture

A photograph of a modern building complex with a large, curved walkway and a palm tree, overlaid with a blue tint.



Construction Management & Inspection (CMCI)

A photograph of a construction site with workers on a structure, overlaid with a blue tint.

Multi Disciplinary Firm. Balanced Portfolio.

Sector
Federal



SERVICES
Architecture
Bridge Design
Bridge Inspection, Load, & Rating Analysis
Building Envelope
Civil Engineering
Environmental Permits
GIS and Mapping
Interior Design
Landscape Architecture
Master Planning
MEP Engineering
Structural Engineering



Federal Clients

U.S. Army

- USACE Norfolk District
- USACE Baltimore District
- USACE Mobile District
- U.S. Army Engineering Center Huntsville
- USACE Vicksburg District
- USACE Charleston District
- USACE Jacksonville District
- USACE Fort Worth District
- USACE Tulsa District



U.S. Air Force

- AFCEC
- Air Mobility Command
- Air Force Materiel Command
- Air Force Reserve Command
- Eglin AFB
- Robins AFB
- Arnold Engineering Development Complex
- Scott AFB
- Malmstrom AFB



Federal Bureau of Prisons

- Mid-Atlantic Region
- UNICOR



Dept of Homeland Security

- Immigration & Customs Enforcement
- Customs & Border Protection
- FEMA



U.S. Navy

- NAVFAC Southeast
- NAVFAC EXWC
- NAVFAC Mid-Atlantic
- MARFORRES



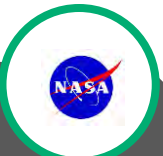
Veterans Affairs

- National Cemetery Administration
- Veterans Health Administration



NASA

- Glenn Space Center
- Stennis Space Center



Representative Projects

Having successfully delivered hundreds of projects to federal agencies, our team is passionate about serving our nation to improve the operational environment and quality of life for those that advance the strategic interests of the United States at home and abroad.



NAVFAC SE – P-200 Nuclear Power Training Unit Simulator Facility
CHARLESTON, SC | Constr. Cost \$311M



NAVFAC SE - Powertrain Phases II-VI
NAS CORPUS CHRISTI, TX | Constr. Cost \$350M+



Facility Condition Assessments, Immigrations & Customs Enforcement
Huntsville, Port Isabel, & El Paso, TX
Constr. Cost \$170M



USACE Mobile - Air Battle Management Simulator Facility
TYNDALL AIR FORCE BASE, FL | Constr. Cost \$23M

PRIME AE Rankings

Engineering News
Record (ENR)

Baltimore Business
Journal

#248

Top 500 Design Firm

#21

Top Design Firm in Transportation – Bridges

#19

Top Design Firm in Environment – Water Treatment, Desalination
Plants

#21

Largest Architecture Firms in Greater Baltimore (Baltimore
Business Journal)

#77

Regional Design Firm – MidAtlantic

#64

Regional Design Firm – Midwest

#20

Regional Design Firm – Midwest by Sector – Structural

#57

Regional Design Firm – New England

#86

Regional Design Firm – Southeast

Recent Recognition In Our Industry

- + ACEC National – MDOT Clayton Road Road I-95 Overpass Replacement, Joppatowne, MD
- + ACEC National – South Main Street Corridor, Akron, OH
- + Smart Business Magazine – 2022 Columbus Smart 50, Columbus, OH
- + Greater Baltimore Committee – Leadership in Diversity Award for Bridging the Gap Achievement, Baltimore, MD
- + SAME Northern Virginia Post – 2022 Sustaining Business of the Year
- + ACE Peer Choice Award – Route 34, New Haven, CT
- + ASHE Central Ohio – Peer Choice Award for Morse Road at Babbitt Road Roundabout Improvement, Columbus, OH



Trust Is Built.

www.primeeng.com



Ed Chamberlayne, PE, PhD, F.SAME

ed.chamberlayne@primeeng.com

(540) 449-3062

<https://www.linkedin.com/in/edwardchamberlayne/>





30 Locations

World-wide

28



UNITED STATES

1



CHINA

1



UNITED ARAB EMIRATES

*Global integrated
design firm*

100%
Employee-owned

1400+
Professionals

Our Partnerships

We are a trusted partner—delivering multiple projects in multiple locations—for dozens of firms, including Fortune 500s and government agencies. Earning our partners’ loyalty is something we take seriously: 80 percent of our work comes from repeat clients.



Smithsonian



US Army Corps of Engineers®



IDIQ Contracts

- Architect of the Capital AE IDIQ - #AOC19C3002
- GSA Schedule - #GS-29F-0006Y
- GSA Region 9 IDIQ, Zones 2 - #47PK1720D0023
- GSA Region 9 IDIQ, Zones 3 - #47PK1720D0007
- Federal Bureau of Prisons, North Central IDIQ - #DJBP04020D00000008
- Smithsonian AE IDIQ - #33330221DFC0010130
- Boeing / US Space Command AE Services Maui Space Surveillance Complex - #2021431
- USACE Little Rock District, IDBIO 5.0 for Department of Defense Healthcare Facilities - #W9127S23D6022
- USACE Louisville District AE IDIQ, Military Missions and Civil Works - #W912QR23R0008

DESIGN EXCELLENCE



*#1 Government Design
Firm (BD World
Architecture 100)*

*650 design awards
since 2008*

*#3 Justice Design Firm
(ENR)*

DIPLOMATIC IDEALS



US Embassy Design Program

3 million SF of diplomatic space designed

In 5 countries across 3 continents

**DEFENSE +
MISSION
CRITICAL**



*#1 Justice Facility/Public
Safety Architecture Firm
(BD+C)*

*Integrated Design
Practice*

*Seymour S. Greenfield
SAME Sustaining Member
2023 award-winner*

CARE AND HONOR



*Rooted and Specialized
Healthcare Practice*

*40-Year History with
the VA*

*Evidence-Based Design
Advocate Firm*

ELEVATE *the*
HUMAN EXPERIENCE
THROUGH DESIGN

dlrgroup.com