

OCT 11, 2023

ALBUQUERQUE, NEW MEXICO / EL PASO, TEXAS POSTS



Meeting & Presentation will start at 12 noon mountain

OCTOBER POST MEETING – OCTOBER 13, 2023

ALBUQUERQUE, NEW MEXICO / EL PASO, TEXAS POSTS



Albuquerque Post
El Paso Field Chapter

Jon Pena, PE
Albuquerque Post President



Aubrey D. Semien II
El Paso Field Chapter President



Dedicated to National Security Since 1920



Albuquerque Post
El Paso Field Chapter

- Albuquerque Post Board of Directors



- El Paso FC President: **Aubrey D. Semien II**, PE, CFM
- Vice President: **Nancy Camarena**, Aztec Contractors, Inc.
- Appointed Directors



2023-2024 Board of Directors

Albuquerque Post & El Paso Field Chapter

2023 - 2024 Post Board of Directors



- ABQ Post President: **Jonathan Pena, PE, NV5**
- El Paso FC President: **Aubrey D. Semien II, PE, CFM**
- President Elect: **Sarah Bigger, LATA**
- Vice President: **LTC Jerre Hansbrough, P.E, USACE ABQ District**
- Treasurer: **Hank Rosoff, Major USAF, Retired**
- Assistant Treasurer: **Jenice Gallegos**
- Secretary: **Pam Lentini, PE, NV5**
- Assistant Secretary: **Yomara Laurenzana, NV5**
- Past President: **W. Paul Waters, AIA, Burns & McDonnell**
- Director: **Stephen Rhutasel, Siemens**
- Director: **Jenice Gallegos**
- Director: **John D'Antonio, PE, Wilson & Company**
- Appointed Director: **Nancy Camarena, Aztec Contractors, Inc.**
- Appointed Director: **Colleen Rust, EAE**
- Appointed Director: **Corey Pacer, Pro2Serve**
- Appointed Director: **Lynelle Brode, PMP, Nakupuna Companies**
- El Paso FC Vice President: **Nancy Camarena, Aztec Contractors, Inc.**
- SB Committee Chair **Thomas Knutson (TK), SAMES**

Special Thanks

Thank
you!



Upcoming Events / Save the Date



Board Meeting

October 25, 2023

Virtual

November Meeting

November 8, 2023 11:30am-1pm

Nexus Brewery

Speaker TBD

Member Social

December TBD

2024 Industry Day

Sandia Resort and Casino

August 2024

Today's Speaker



Tracey Yellen, CEO Paseo Del Norte Community Foundation

Tracy J. Yellen is the Chief Executive Officer of the Paso del Norte Community Foundation, which includes the Paso del Norte Health Foundation, Fundacion Paso del Norte para la Salud y Bienestar, El Paso Giving Day and a growing community of philanthropy.

Prior to joining the Foundations in 2013, Tracy served as Managing Partner of MJD & Associates, Campaign Director for the World YWCA Global Campaign, Development Director for the YWCA El Paso Del Norte Region, Public Outreach Director for the Border Environment Cooperation Commission, and Program Coordinator in the Office of Border Affairs for the Texas Natural Resource Conservation Commission.

Tracy is active in the El Paso community. She is a member of the Board of Directors of the Federal Reserve Bank of Dallas El Paso Branch, Borderplex Alliance, PHIX Health Information Exchange, Fundacion Paso del Norte, and ROICOM. She was previously on the boards of the University Medical Center of El Paso, YWCA El Paso Del Norte Region, Women's Fund of El Paso, Mesita Elementary, Wiggs Middle and El Paso High School PTAs, Kern Place Association, Keep El Paso Beautiful and The Johns Hopkins University.

Tracy has been recognized with numerous awards including the 2014 El Paso Inc. Woman of Impact, 2014 Project Amistad Humanitarian of the Year, 2012 Association of Fundraising Professionals Executive of the Year, and 2012 Nolan Richardson Charities Elaine Pharr Woman of the Year.

Tracy earned a Bachelor of Arts Degree in International Studies from The Johns Hopkins University and Masters in Public Administration from the University of Texas at El Paso. She is a former college basketball player and marathon runner. Tracy is married to Steve Yellen and has two children.



PASO DEL NORTE
HEALTH FOUNDATION



PASO DEL NORTE
COMMUNITY FOUNDATION



FUNDACIÓN
PASO DEL NORTE
Para la Salud y Bienestar

SERVING THE PASO DEL NORTE REGION



\$130M
ORIGINAL
ASSETS

\$300M+
CURRENT
ASSETS
12/31/22

\$320M+
GRANTS

Shared vision to ensure that all people in our binational, tri-state region have the knowledge, resources, environment and support to lead happy, healthy and productive lives.

~\$14M+ in grants

- VapeFree Paso del Norte campaign
- Grants to NAMI, El Paso Child Guidance Center to reduce stigma and support trauma
- Grants to increase access to health foods; support School Health and Safe Routes to School
- Diabetes assessment and grantmaking
- TTUHSC Hunt School of Dental Medicine
- 8.3 miles the Playa Drain Trail; planning Downtown to MCA segment
- Supported TTUHSC's new Child Psychiatry Access Network and Child Health Access through Telemedicine
- Supported keeping youth connected with grants to nonprofits for virtual after school programs
- REALIZE Board in partnership with United Way
- \$3.5M for a special COVID-19 Preparedness, Recovery and Transformation program for nonprofit organizations and promotora outreach



REDUCE THE RISK
FOR YOU, FOR ME

When you wear a mask, it reduces the risk of giving COVID-19 to others. When others around you wear a mask, it reduces your risk of getting sick. None of us likes wearing a mask and asking others to wear a mask may be awkward, but it's the best way we have to reduce the risk of spreading COVID-19.

Wear your mask securely over your nose and mouth. COVID-19 can spread through tiny droplets which remain in the air when people talk and breathe. So if a mask is only worn over the mouth, it's not as effective at reducing the risk.

It's not just strangers who can get you sick. Even members of your own family can get you sick without knowing it and without meaning to. Make sure that friends, relatives and other loved ones who don't live with you wear a mask whenever they're around you. Do the same in return for them. If we all wear face masks, we can effectively reduce the risk of spreading COVID-19 to one another.

For more information: ReduceTheRisk915.org

Community Foundation

- \$38M+ to support **COVID-19-related response**, PPE, health messaging, and rental assistance.
- \$15 million+ in gifts for **Donor Advised Funds and Designated Funds** with leadership gifts from individuals and families
- ~\$1.2 million for 200+ nonprofits as part of **El Paso Giving Day**; \$330,000 match/prizes; 7,000+ gifts, 50 states, 30 countries.
- Support **community projects** like Moms on Board, Green Hope Project Mountain Lion Mural, El Paso Museum of Art Foundation Star Ceiling
- \$300,000 in **scholarships** to 201 students for higher education through multiple donor and designated funds
- Completed distribution of \$11.8 million for August 3rd victims/families through **One Fund El Paso**; began audit; paid tribute to 1st anniversary

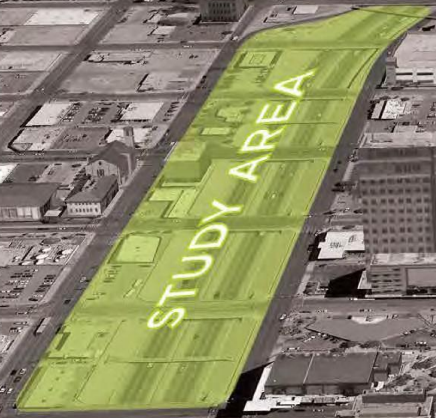


Fundación Paso del Norte

- \$1M Hunt Family Foundation Challenge – allows organization to grant \$600,000 new dollars to Juarez-based nonprofit organizations every year for 10 years
- First REALIZE Executive of 18 leaders in Cd. Juarez
- 15,000+ participants in Juarez en Accion campaign in September in partnership with the Juarez FC Bravos
- New partnerships with funds for COVID-19 response, hunger relief efforts, and nonprofit organizations like La Rodadora
- Continued "Escuelas de Bienestar" programming with schools to stay connected with youth
- Continued partnerships with FICOSEC to support nonprofit organizations in communities still recovering from violence



EL PASO DECK PLAZA



DOWNTOWN DECK PLAZA

- The **Paso del Norte Health Foundation** engaged OJB Landscape Architects in late 2018 to help establish a vision for a Deck Plaza over I-10 in the downtown corridor from Campbell to Santa Fe streets for a 12-acre site.
- The project was an extension of the trail planning work that the Health Foundation initiated to establish the **Paso del Norte Trail** master plan for a 68-mile county-wide trail, 20 miles which have been completed. The Health Foundation supported the development of portions of the trail, including the Playa Drain Trail and the River Park Trail.
- The **Paso del Norte Community Foundation** established the **Paso del Norte Trail Foundation** and “Friends of the Trail” program to support this work.
- The Paso del Norte Community Foundation has also established the **Downtown Deck Plaza Foundation** to support future development of the park project, which we hope will include hike/bike trails.
- The City of El Paso received a **\$900,000 RAISE grant from the U.S. DOT for design, engineering and community engagement**. The Downtown Deck Plaza Foundation will contribute matching funds to support the project.
- Community engagement is essential to support the vision for the project.



DOWNTOWN DECK PLAZA FEASIBILITY STUDY



DOWNTOWN DECK
PLAZA FOUNDATION



Background



Photo courtesy of El Paso Herald Post Records MS348, Special Collections at UTEP Library

In 1969, work was underway to extend I-10 through El Paso.

The project disrupted the heart of Downtown El Paso — and the fabric of El Paso's urban core — with a sunken freeway.

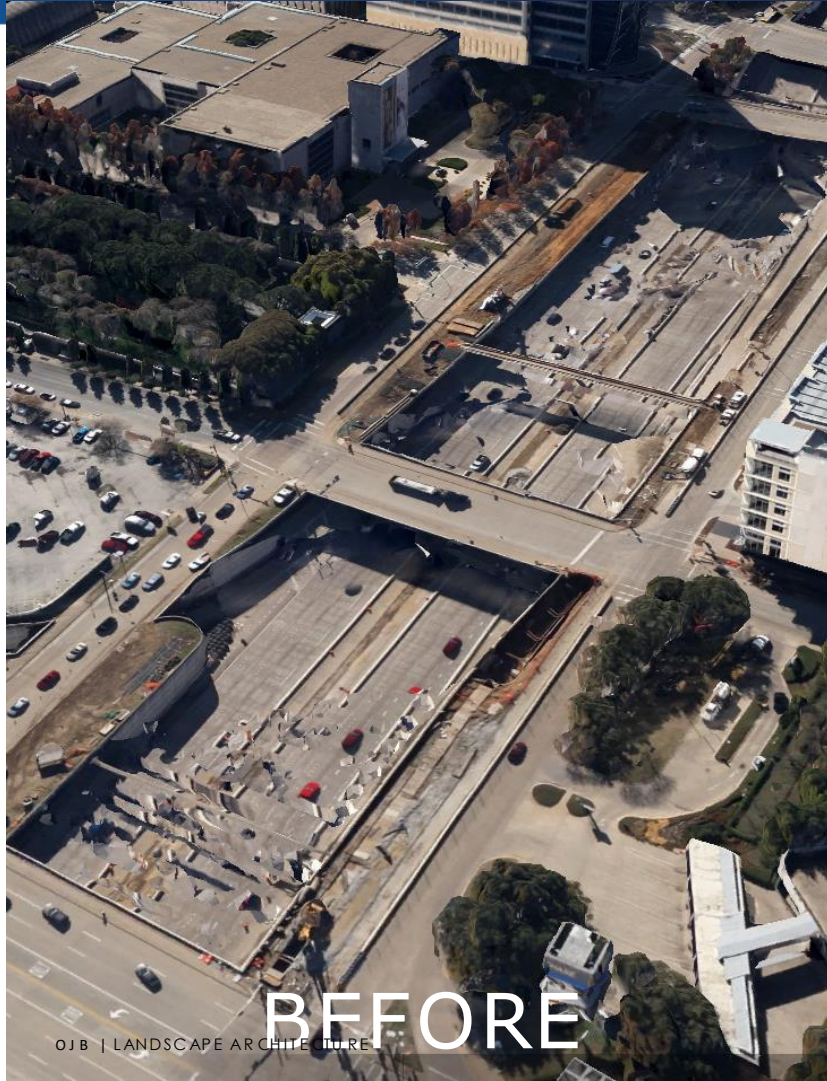
Background

- Every 50 years or so, highways have to be rebuilt.
- With the reconstruction of Interstate 10, we have a once-in-a-generation opportunity to create a new community space.
- In collaboration with the Downtown Deck Plaza Foundation, the City of El Paso is studying the feasibility of placing a deck plaza over I-10 in Downtown El Paso.

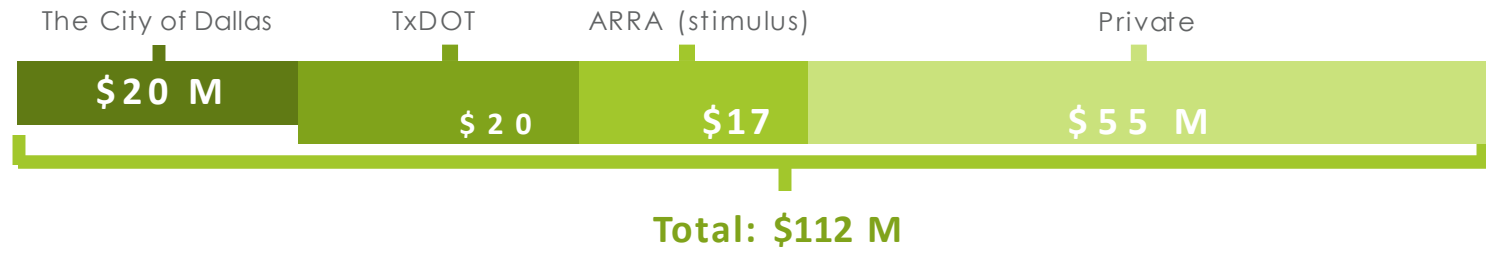


Background





ECONOMICS OF KLYDE WARREN PARK

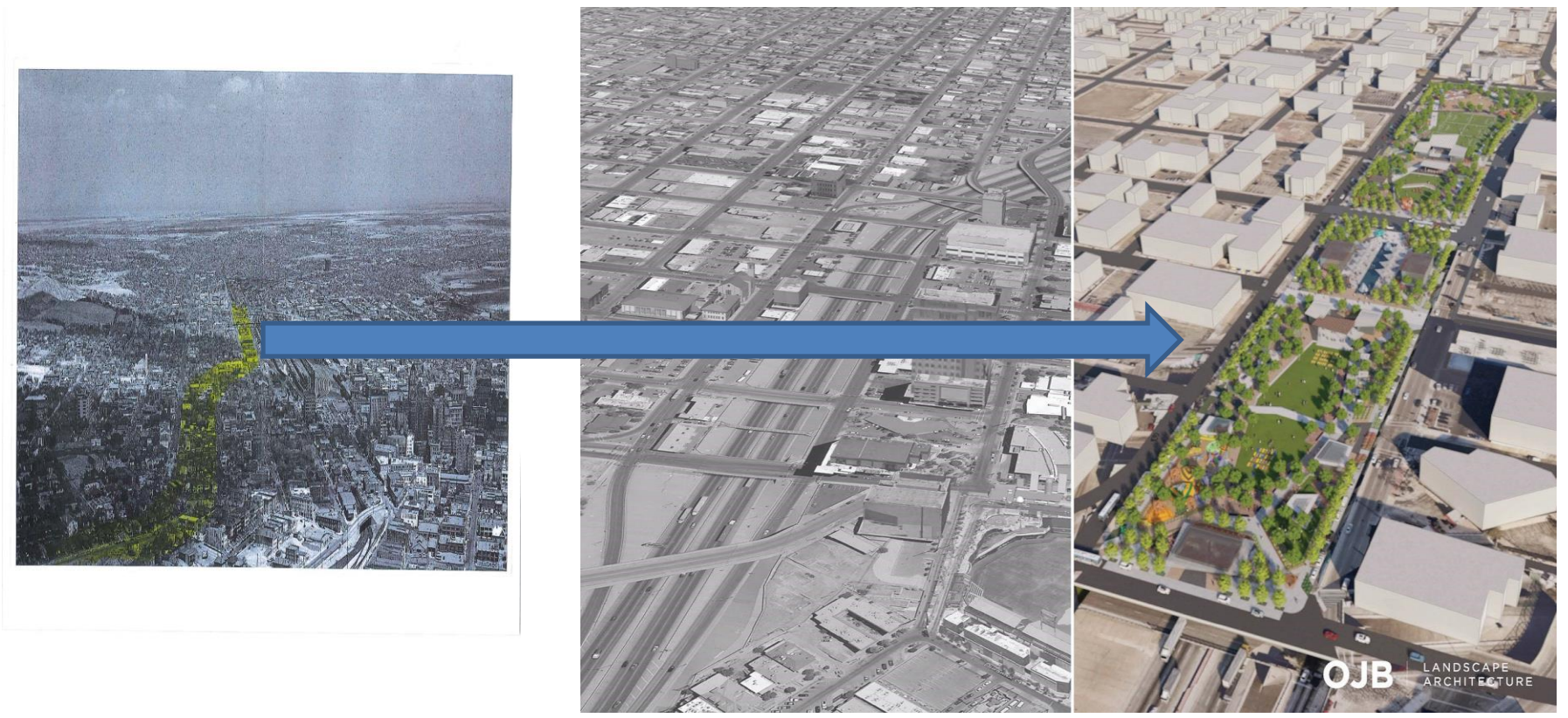


- Founded through public-private partnership to connect disjointed downtown neighborhoods
- Regional amenity and No 1 tourist attraction in Dallas; signature space in Dallas
- City invested \$20M; now generates \$15M a year
- \$2.5 bill to \$5.2 bill (2014 to 2019) value increase within PID
- Received Stimulus funds
- City of Dallas has 99 yr lease; operated by a nonprofit Park Foundation
- 40k people living within a 2 miles radius of park; 500 20 yrs ago
- 5.2 acres; currently expanding with more deck parks planned

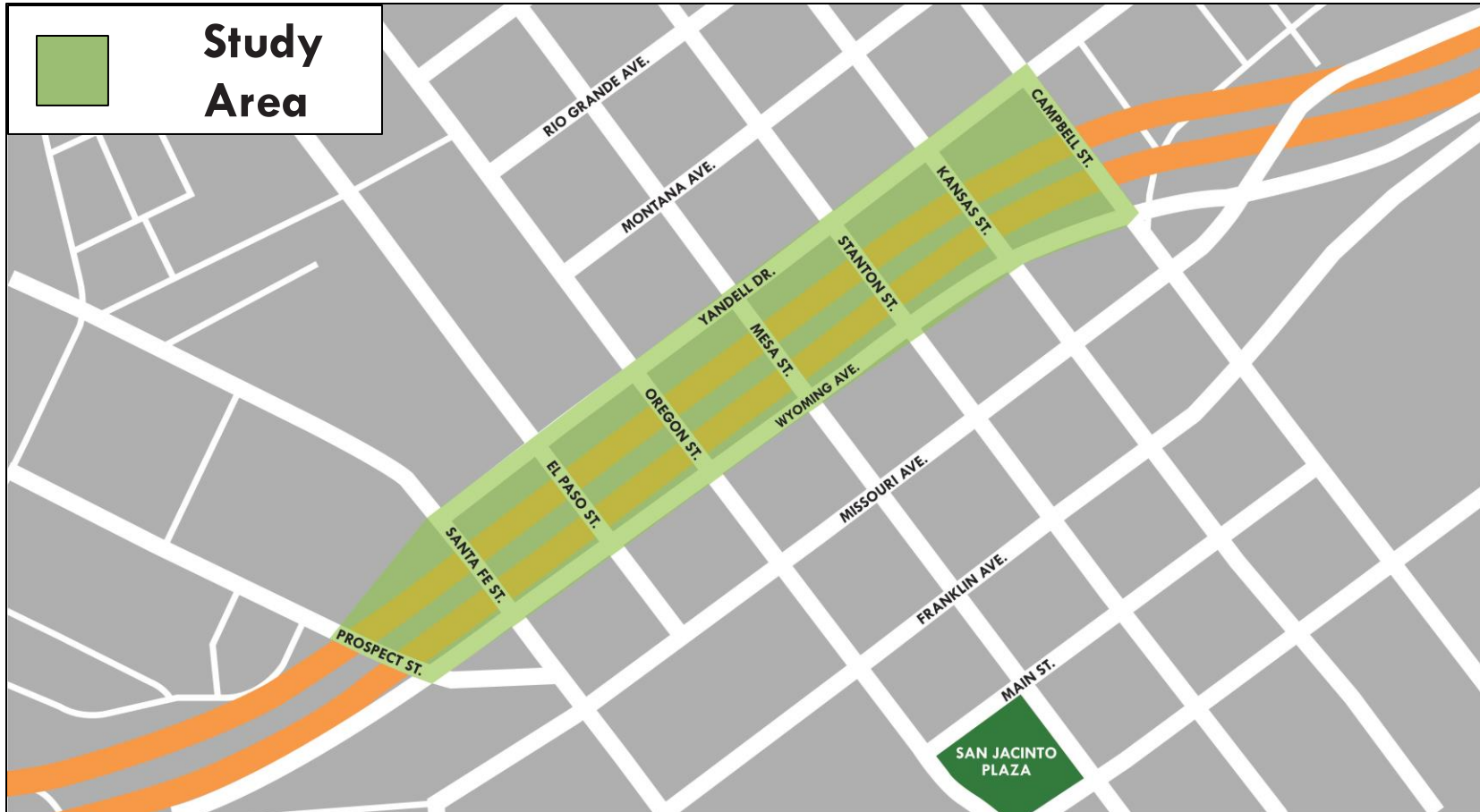
Dedicated to National Security Since 1920



RE-CONNECTING COMMUNITIES



Background



About the Feasibility Study

- The City of El Paso was awarded a \$900,000 Federal RAISE Grant to study the feasibility of placing a deck over I-10 in Downtown El Paso
- City partnered with Downtown Deck Plaza Foundation, part of the Paso del Norte Community Foundation
- Scope of Work: Vision, Landscape architecture, civil engineering, structural assessments, market feasibility, economic feasibility

About the Feasibility Study

February - March 2023

Community Meetings
(Series 1)

Hear Community Feedback

March - April 2023

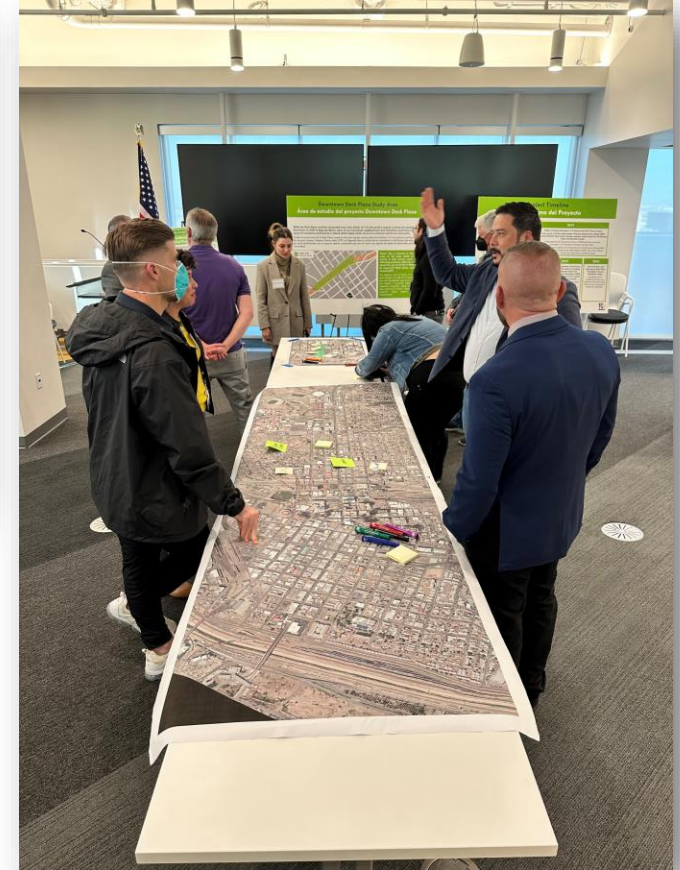
**Develop alternatives based on
community feedback**

April 2023

Community Meetings
(Series 2)

**Present findings
to the community**

What We've Heard So Far



What We've Heard So Far

Tell us what you love about El Paso. Write your answer on a sticky note and place it in the appropriate category.
 Cuéntenos qué les gusta de El Paso. Escriban su respuesta en una nota Post-it y colóquenla en la categoría que corresponda.

PEOPLE
Gente

WEATHER
Clima

CULTURE
Cultura

HISTORY
Historia

NEIGHBORHOODS
Barrios

OTHER
Otro

DOWNTOWN DECK PLAZA FOUNDATION

How can we incorporate the things we love about El Paso into the new space? What should be in the plaza?
 ¿Cómo podemos incorporar las cosas que nos gustan de El Paso en este nuevo espacio? ¿Qué creen que debería haber en esta plaza?
 ¿Qué les gustaría hacer en la plaza? Escriban su respuesta en una nota Post-it y colóquenla en la categoría que corresponda.

PEOPLE
Gente

WEATHER
Clima

CULTURE
Cultura

HISTORY
Historia

NEIGHBORHOODS
Barrios

OTHER
Otro

DOWNTOWN DECK PLAZA FOUNDATION

What We've Heard So Far

Major Themes:

- Shade/green space
- Native trees/plants
- Vendor spaces/food trucks
- Performance spaces
- Reconnection of neighborhoods
- Uniqueness of El Paso

Major Concerns:

- How will pedestrians interact with the space?
- What will the ultimate transportation improvements look like?
- What is the mechanism to fund construction and/or operations & maintenance of the facility?

Authentic Cultural Crossroads

- Symbolism
- Heritage
- Contemporary Culture
- Common Ground

Inviting Sense of Place

- Active edges
- Amenity & Programming Variety
- Shade
- Safety
- Noise Mitigation

Enhanced Accessibility/ Connectivity

- Street Grid
- Walkability
- ADA Access
- Bike-ability
- Transit access
- Vehicular access
- Parking

Implementation Feasibility:

- Constructability
- Infrastructure Compatibility
- TXDOT Alignment
- Traffic Capacity Thresholds
- Cost
- Phasing
- Value Capture

Inclusive Economic Development

- Local Businesses
- Local Institutions
- Minimizing Displacement

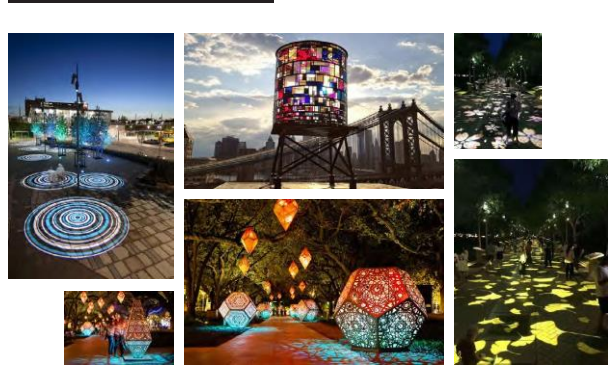
Sustainability/Climate Action

- Native Planting
- Water Conservation
- Heat Island Reduction
- Energy Conservation

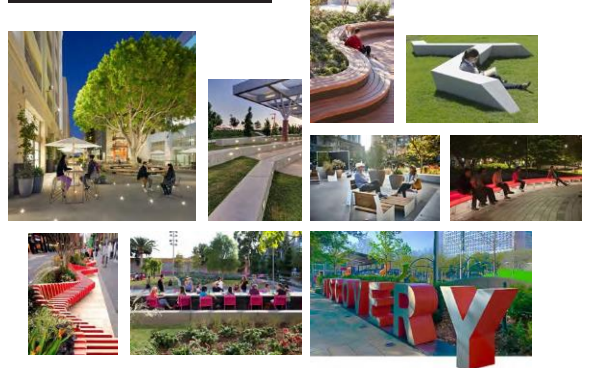
PUBLIC ART



LIGHTING



SEATING



GARDENS
ARTE PUBLICA



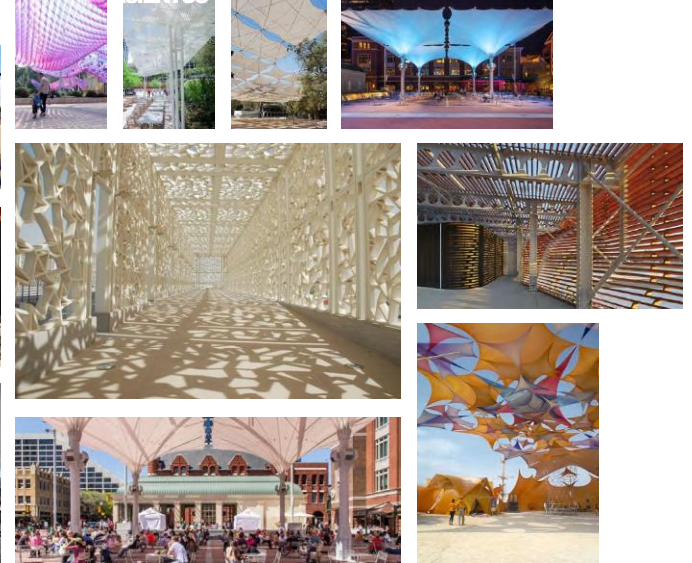
ILUMINACION



SHADE STRUCTURES



SIENTOS



PLANTAS



PLANTAS



PLANTAS



PLANTAS



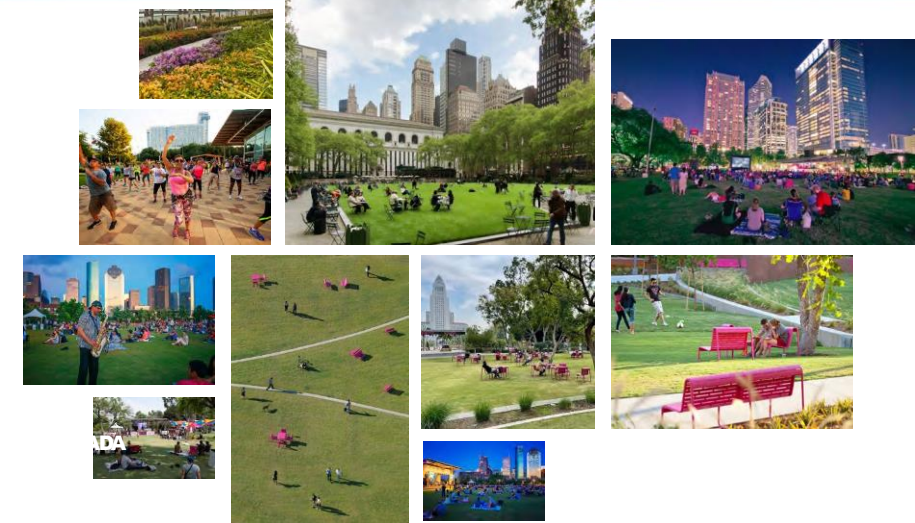
ESTRUCTURAS DE PLANTAS



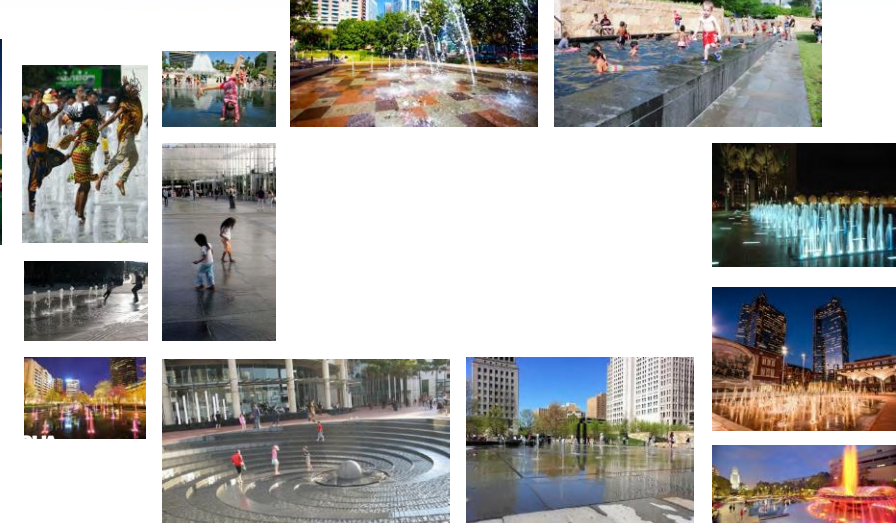
ESTRUCTURAS DE PLANTAS



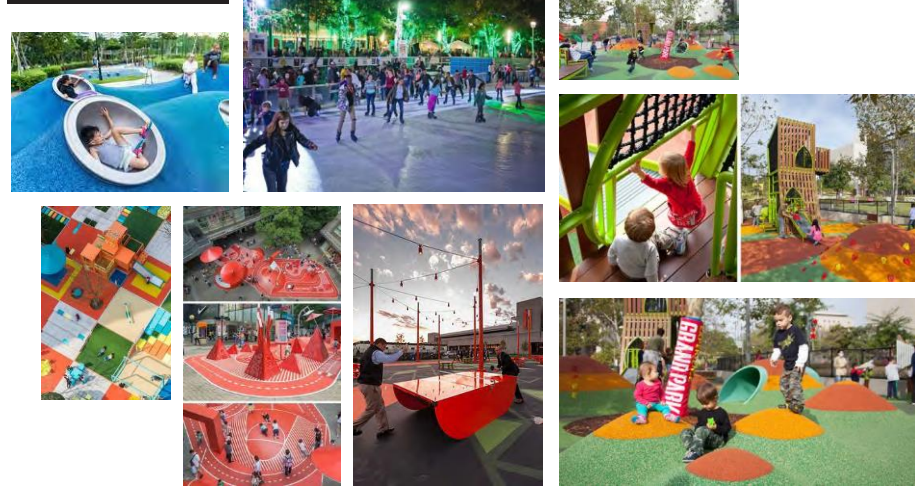
EVENT "LAWN"



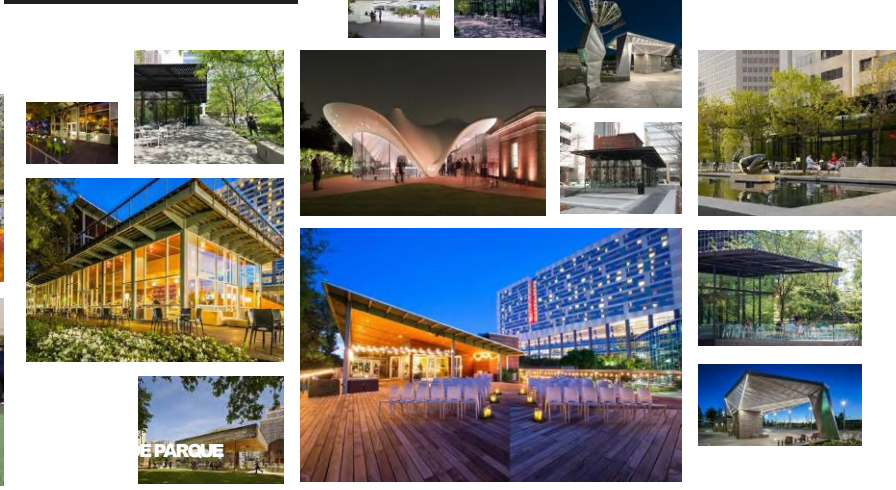
WATER



PLAY



PARK BUILDINGS/STRUCTURES



PROGRAM DEVELOPMENT TESTING DIAGRAM #1



1
 TEST CASE

Questions? Comments?
