



Meeting & Presentation will start at 12:15 noon mountain

POST MEETING – NOVEMBER 8, 2023
ALBUQUERQUE, NEW MEXICO / EL PASO, TEXAS POSTS



Albuquerque Post
El Paso Field Chapter

Jon Pena, PE
Albuquerque Post President



Aubrey D. Semien II
El Paso Field Chapter President



Dedicated to National Security Since 1920



Albuquerque Post El Paso Field Chapter

- Albuquerque Post Board of Directors



- El Paso FC President: **Aubrey D. Semien II**, PE, CFM
- Vice President: **Nancy Camarena**, Aztec Contractors, Inc.
- Appointed Directors



2023-2024 Board of Directors

Albuquerque Post & El Paso Field Chapter

2023 - 2024 Post Board of Directors



- ABQ Post President: **Jonathan Pena, PE, NV5**
- El Paso FC President: **Aubrey D. Semien II, PE, CFM**
- President Elect: **Sarah Bigger, LATA**
- Vice President: **LTC Jerre Hansbrough, P.E, USACE ABQ District**
- Treasurer: **Hank Rosoff, Major USAF, Retired**
- Assistant Treasurer: **Jenice Gallegos**
- Secretary: **Pam Lentini, PE, NV5**
- Assistant Secretary: **Yomara Laurenzana, NV5**
- Past President: **W. Paul Waters, AIA, Burns & McDonnell**
- Director: **Stephen Rhutasel, Siemens**
- Director: **Jenice Gallegos**
- Director: **John D'Antonio, PE, Wilson & Company**
- Appointed Director: **Nancy Camarena, Aztec Contractors, Inc.**
- Appointed Director: **Colleen Rust, EAE**
- Appointed Director: **Corey Pacer, Pro2Serve**
- Appointed Director: **Lynelle Brode, PMP, Nakupuna Companies**
- El Paso FC Vice President: **Nancy Camarena, Aztec Contractors, Inc.**
- SB Committee Chair **Thomas Knutson (TK), SAMES**

Upcoming Events / Save the Date



Board Meeting

November 29, 2023

Virtual

December Meeting

December 13, 2023 11:30am-1pm

Nexus Brewery

Zeke Chavez, AI in Construction Industry

Member Social

Brew Lab

December 19, 2023 6-8pm

2024 Industry Day

Sandia Resort and Casino

August 2024



**US Army Corps
of Engineers®**

USACE Civil Works Program

Ryan Gronewold, P.E.

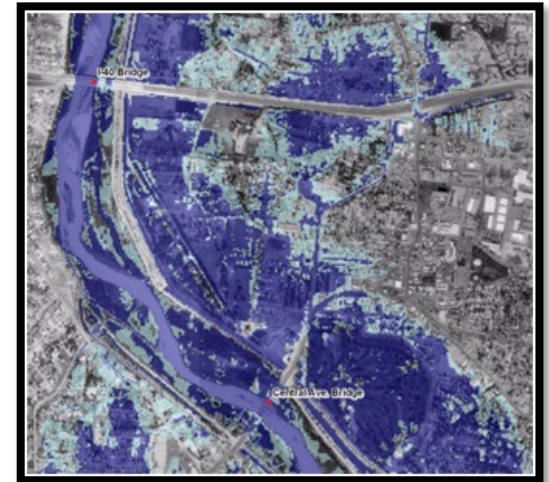
Chief, Planning Branch

Jared Minor

Chief of Civil Works

Albuquerque District

US Army Corps of Engineers



SAME ALBUQUERQUE POST, CIVIL WORKS OVERVIEW 2023

Ryan Gronewold, P.E., Chief of Planning Branch

Jared Minor, Chief of Civil Works Branch



U.S. ARMY



US Army Corps
of Engineers®



USACE MISSION AREAS

Military Programs

- Military Construction
- COCOM Support ,Overseas Contingency Opns (OCO)
- Installation, Environmental, Energy and Sustainability



Civil Works

- Navigation, Hydropower
- Flood Control, Coast Protect
- Water Supply, Regulatory
- Recreation, Disaster Response
- Environmental Restoration



Homeland Security

- Critical Infrastructure
- Anti-terrorism Plans
- Intelligence
- Facility Security Partnerships
- Emergency Operations



International & Interagency Support

- Federal
- State
- Local
- International
- Foreign Military Sales



USACE Has a Globally Diverse Mission Set Driven by Diverse Customers in Support of the DoD and the Nation

Research & Development

- Warfighter
- Installations & Energy
- Environment ,Water Resources



Real Estate

- Acquire, Manage and Dispose
- DoD Recruiting Facilities
- Contingency Operations



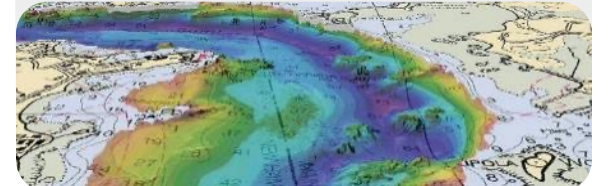
Regulatory

- Regulate Waters of the U.S.
- Section 404 & 10 Programs
- Nationwide Permits



Geospatial Support

- Common Operating Picture
- Support to Civil Works/Military
- Support to Emergency Ops



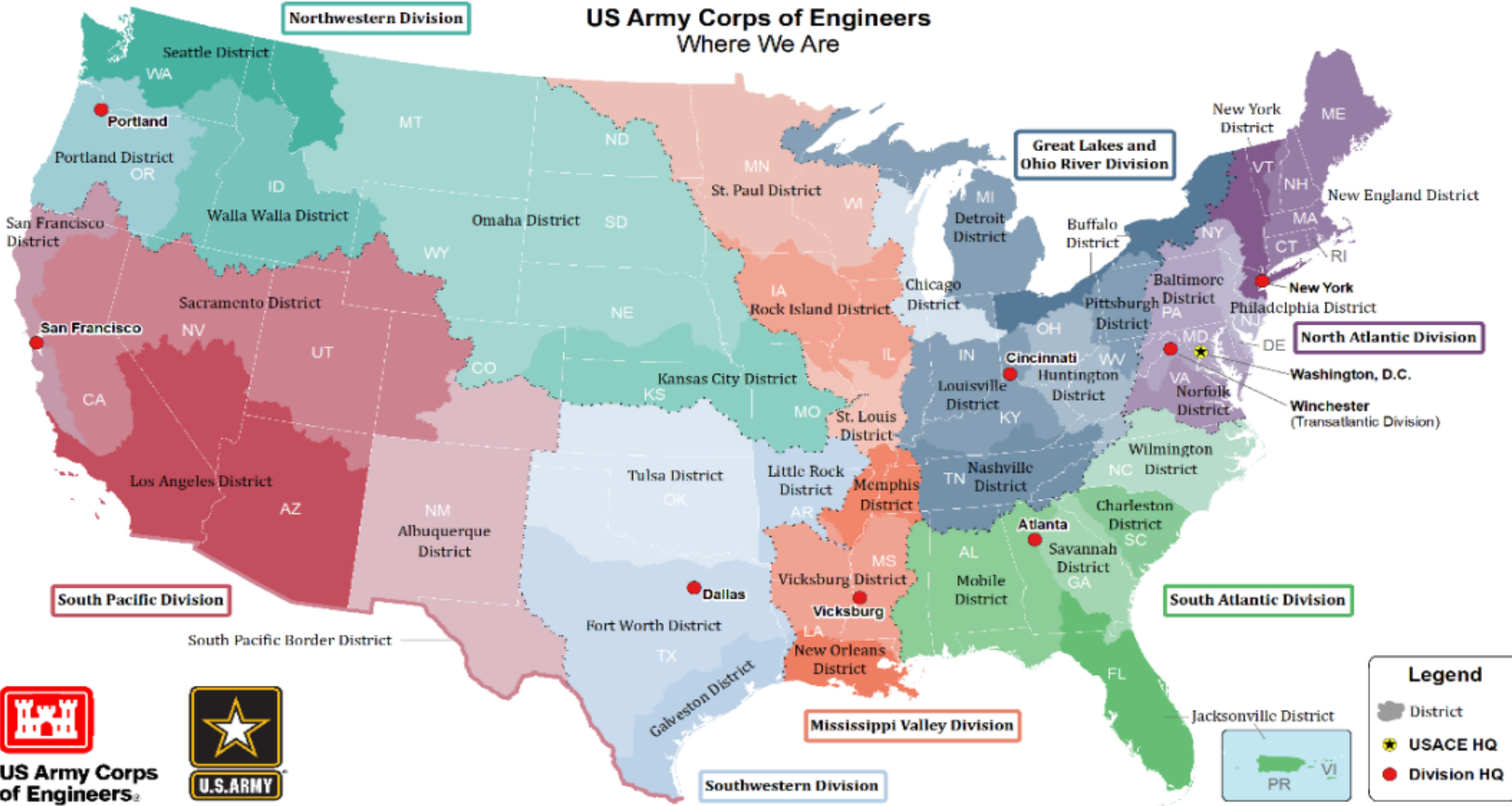


U.S. ARMY

USACE DIVISION BOUNDARIES



US Army Corps of Engineers
Where We Are



- ▶ 35,000 employees present in over 30 countries
- ▶ Owns and operates 694 dams
- ▶ Maintains over 12,000 miles of waterways
- ▶ Largest provider of outdoor recreation, operating over 2,380 recreation areas and hosting 370 million visitors annually
- ▶ Largest owner and operator of hydroelectric power plants in the US



US Army Corps of Engineers

U.S. ARMY

Civil Works Districts shown in United States. Military Districts shown outside United States.

Other Organizations
 249th Engineer Battalion
 Army Geospatial Center
 Engineering and Support Center, Huntsville
 Engineer Research and Development Center (ERDC), 7 labs
 Institute for Water Resources
 Marine Design Center
 USACE Finance Center
 USACE Logistics Activity

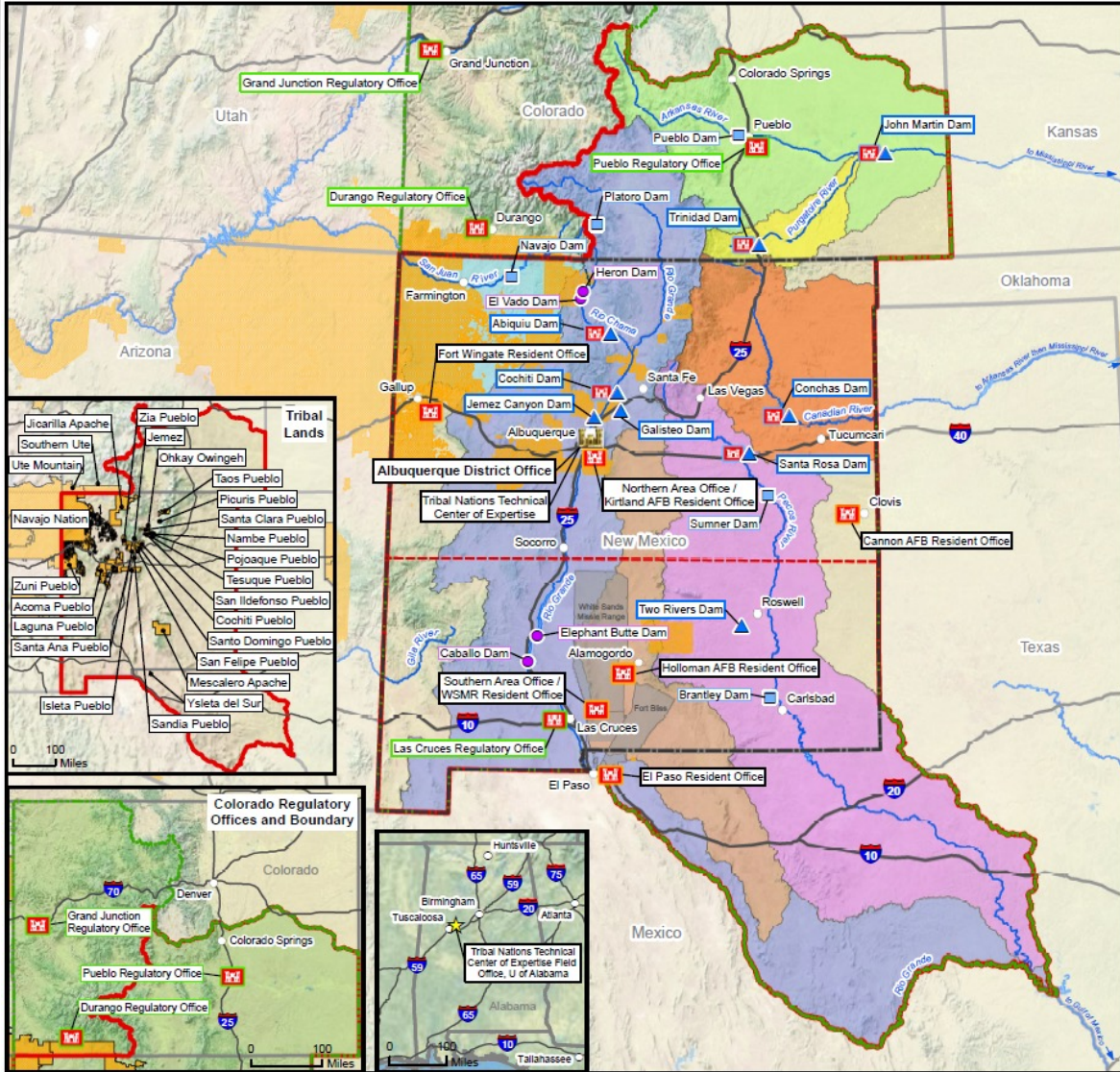
Date: March 2020
USACE Pittsburgh Geospatial





U.S. ARMY

USACE ALBUQUERQUE (SPA) BOUNDARIES

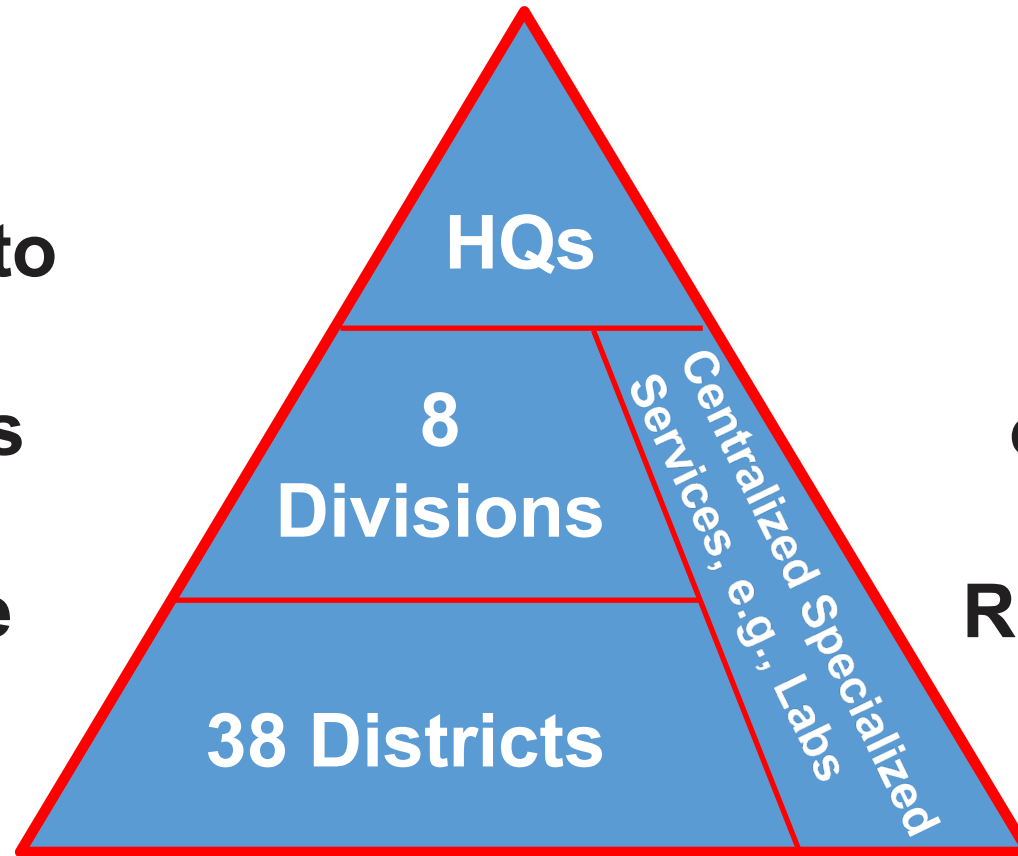


- ▶ **Primarily serving 3 States (NM, CO, TX)**
- ▶ **Support 2 Army Installations & 3 Air Force Bases**
- ▶ **5 Construction Resident Offices**
- ▶ **4 Regulatory Field Offices**
- ▶ **9 dams, with 4 USACE and 8 state campgrounds hosting 6.7 million visitor hours annually**
- ▶ **360 Military and civilian employees**
- ▶ **Partner with 23 federally recognized tribes or pueblos**
- ▶ **FY23 Estimated Contract Obligations, \$220M**



CORPS CIVIL WORKS GEOGRAPHIC ORGANIZATION – VERTICAL STRUCTURE

Conforms to Watershed Boundaries to Extent Practicable



Maximum Delegations of Authorities and Responsibilities

Note: District count does not include Europe, Far East, Japan District, TAD + Districts



U.S. ARMY

THE CIVIL WORKS FUNCTIONAL ORGANIZATION – HORIZONTAL STRUCTURE



- Mission Elements:

- Planning
- Engineering
- Construction
- Project O&M
- Program Management
- District Project Mgmt

- Support Elements:

- Contracting
- Resource Mgmt
- Public Affairs
- Logistics
- Human Resources
- Counsel
- Information Management

- Real Estate is both *Mission* and *Support*



U.S. ARMY

AUTHORIZATION & APPROPRIATION

15



*USACE studies and projects require **both** Congressional authorization and appropriation – this is unique compared to other federal agencies*

Just because you have one does not mean you have the other

Authorization

- Permission for study, program, or project
- Generally, via the biennial Water Resources Development Act (WRDA)
- May also be via Committee resolution

Appropriation

- Approval to obligate and spend federal funds for an authorized study program, or project
- Annual Energy & Water Development Appropriation Act (or omnibus appropriations)

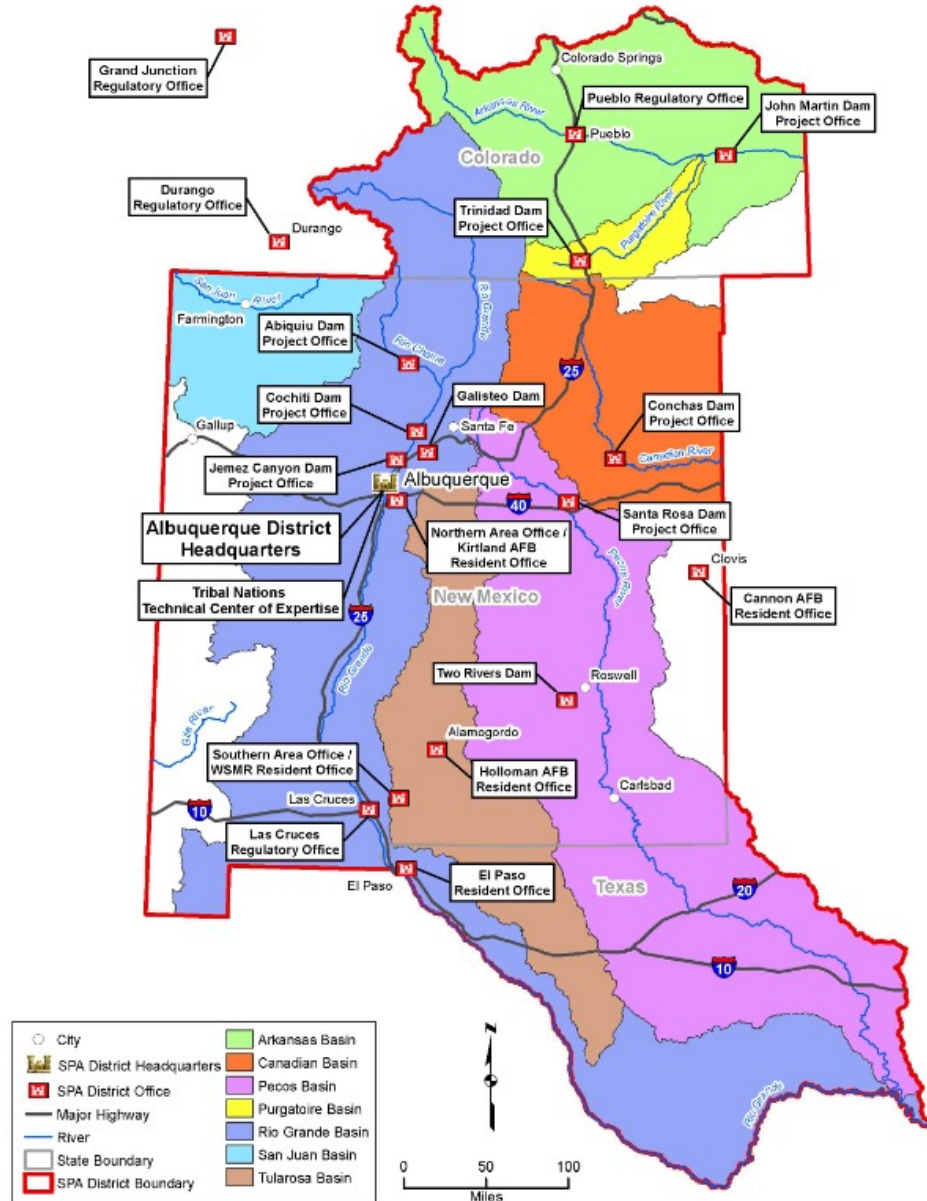




U.S. ARMY



CIVIL WORKS MISSION



▶ Flood Risk Management

- Study, Design, and Construction

▶ Ecosystem Restoration

- Study, Design, and Construction

▶ Operation and Maintenance

- 9 Dams

▶ Environmental Infrastructure

- Design and Construction

▶ Technical Assistance Programs

- Study only

CIVIL WORKS PROGRAMS

- ▶ **Continuing Authorities Program (CAP)** (Study, Design, and Construction)
 - Section 14 - Emergency Streambank Stabilization
 - Section 205 - Small Flood Control Projects
 - Section 206 - Aquatic Ecosystem Restoration
 - Section 1135 - Project Modifications for the Improvement of the Environment
- ▶ **Environmental Infrastructure** (Design and Construction)
 - Section 593/595 – Rural and Central NM
- ▶ **Acequia Program** (Design and Construction)
 - Restore and preserve the systems for cultural and historic value
- ▶ **Technical Assistance Programs** (Study Only)
 - Floodplain Management Services (FPMS)
 - Planning Assistance to States (PAS)



U.S. ARMY

ALBUQUERQUE DISTRICT AREA PROJECTS



Corps Projects

- Abiquiu Reservoir (NM)
- Cochiti Lake (NM)
- Galisteo Reservoir (NM)
- Jemez Canyon Reservoir (NM)

Section 7 Project

- Platoro Reservoir (CO)

Reclamation Projects

- San Juan-Chama Project / Heron Reservoir (CO/NM)
- El Vado Reservoir (NM)
- Elephant Butte Reservoir (NM)
- Caballo Reservoir (NM)

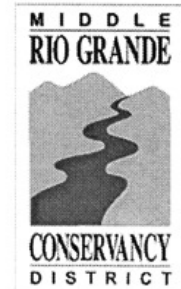
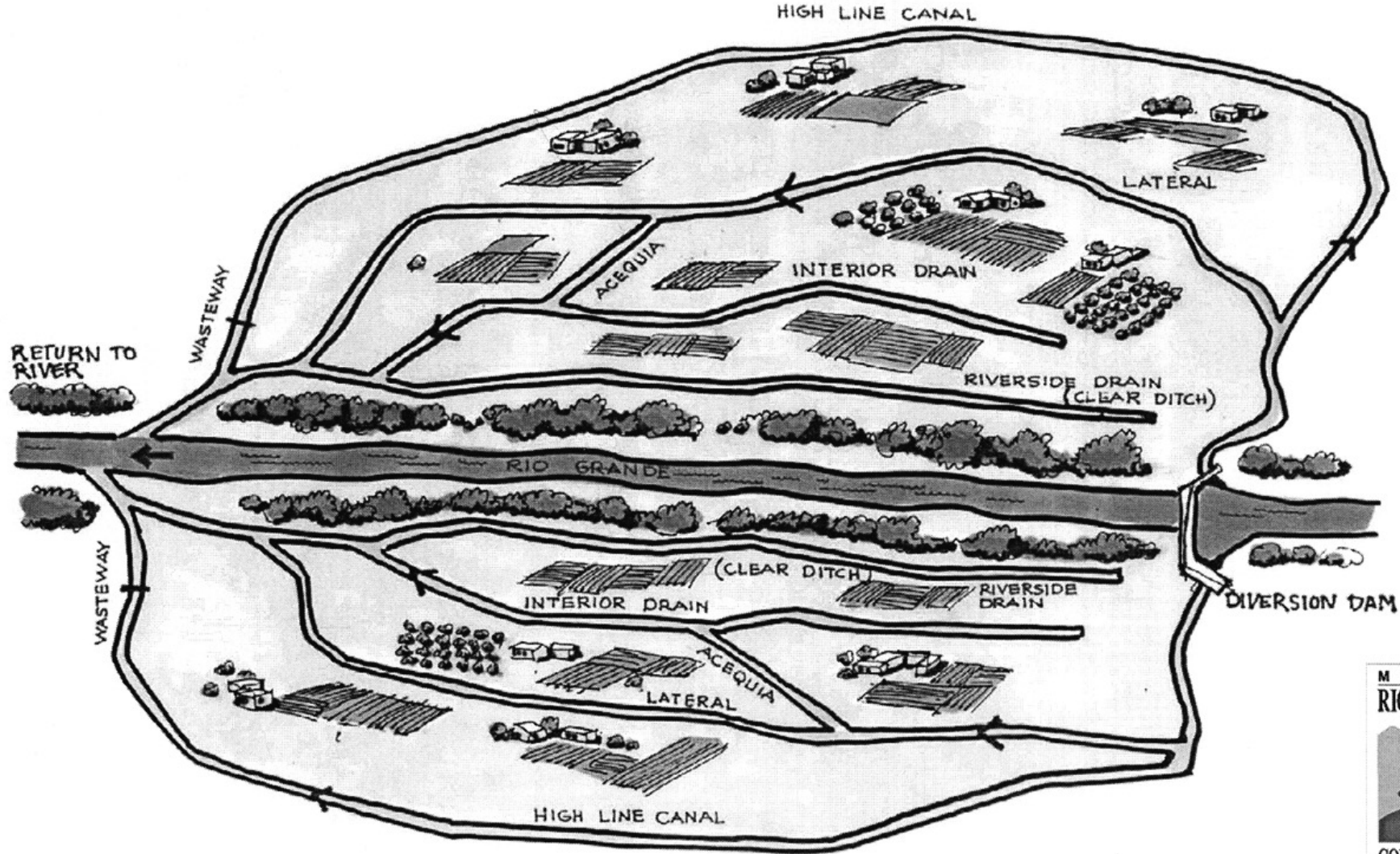




U.S. ARMY



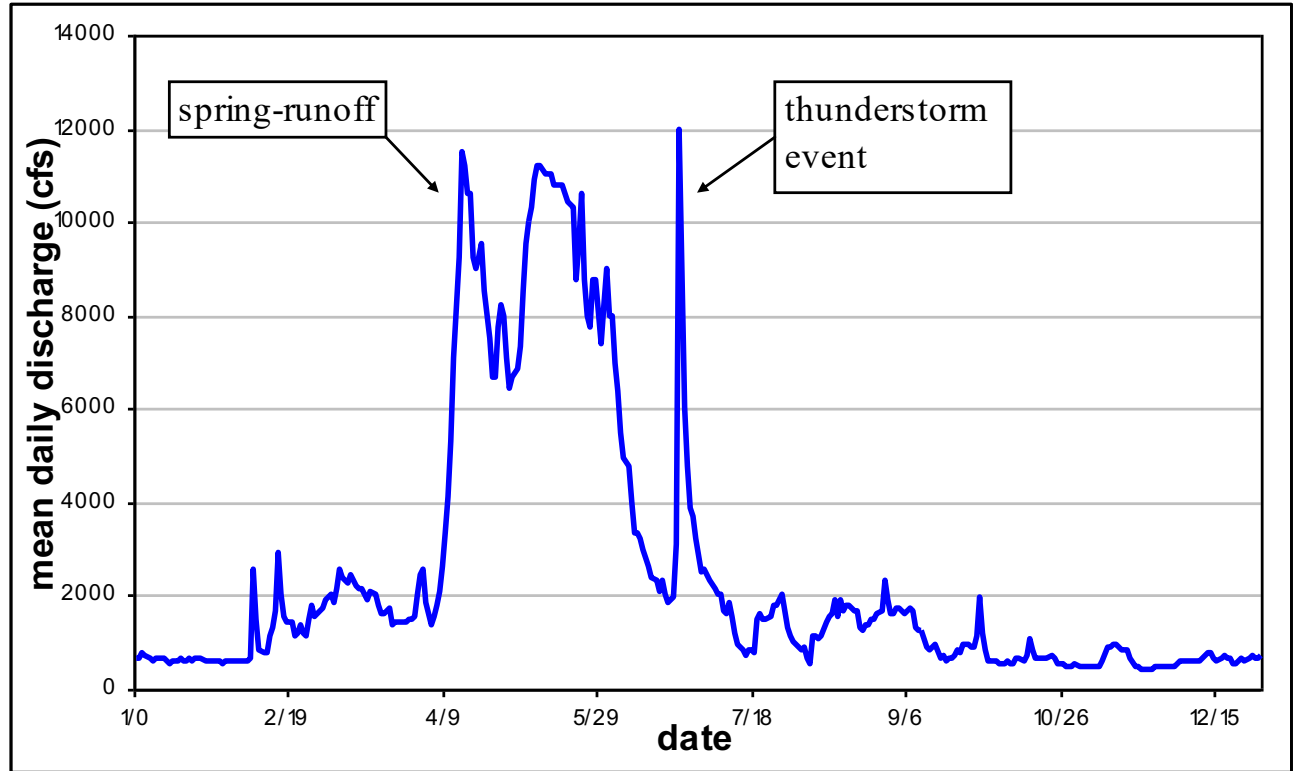
Schematic of the Irrigation System



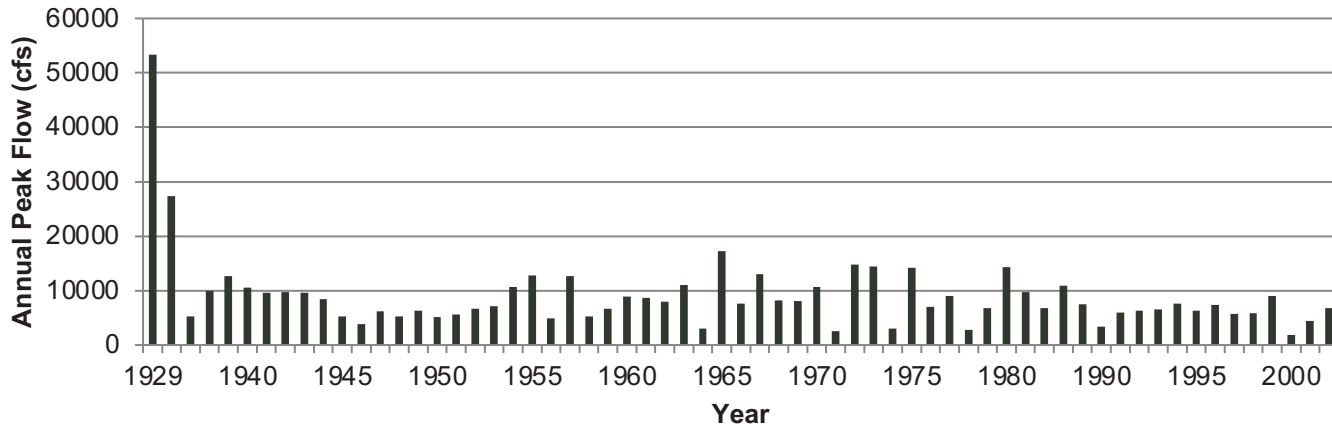


U.S. ARMY

HISTORICAL FLOOD CHARACTERISTICS



Annual peak flow 1929-2008; USGS Rio Grande gage at San Marcial.



Mean daily discharge for 1937; USGS Rio Grande gage at San Felipe.

FLOODING AND SEDIMENTATION

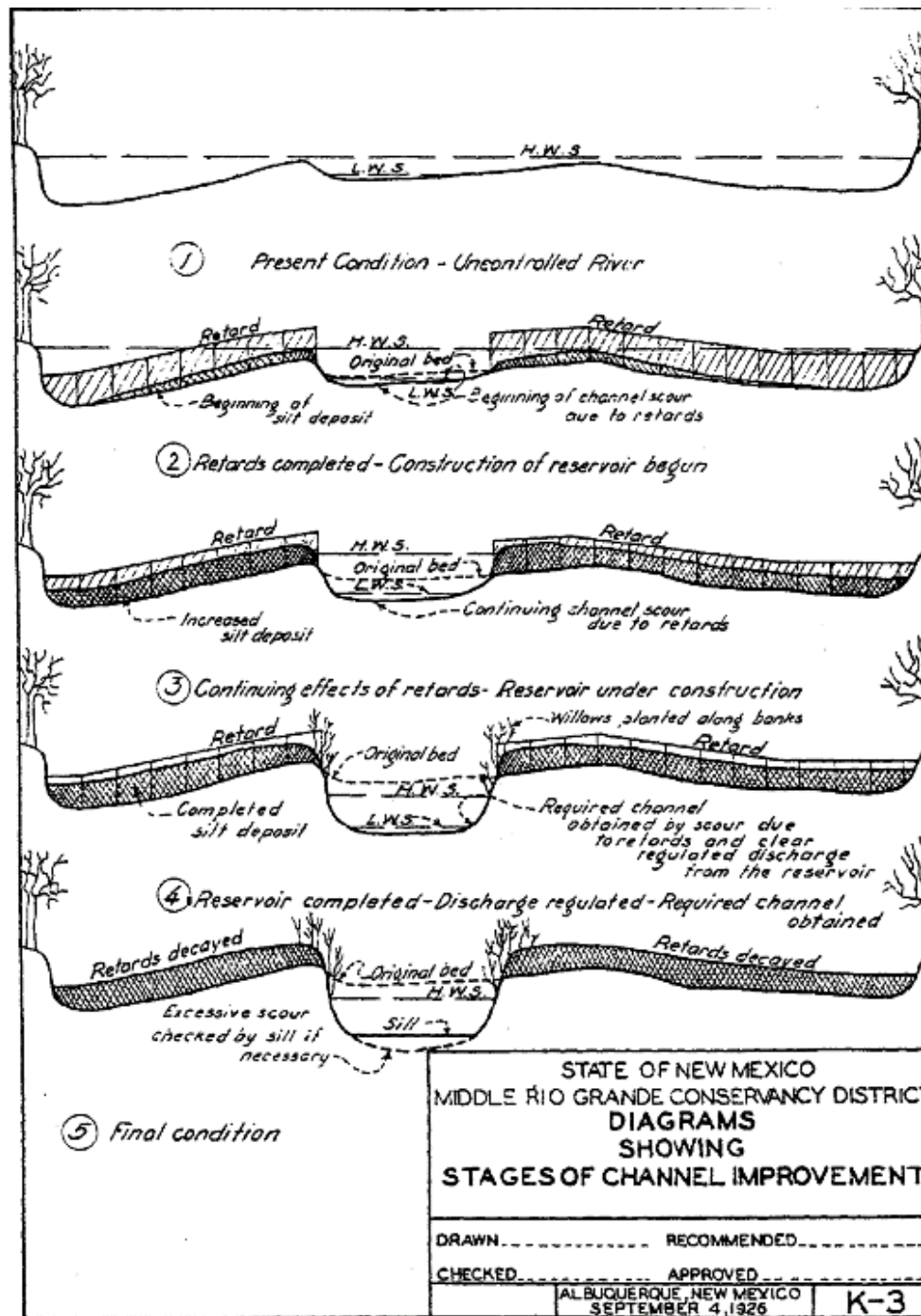




U.S. ARMY

CHANNEL IMPROVEMENTS

- “Jetty Jack” flow retards installed on overbank induce sediment deposition
- Flow is concentrated in single channel causing channel incision
- Improved/efficient channel conveyance
- Interior and agricultural drainage improved

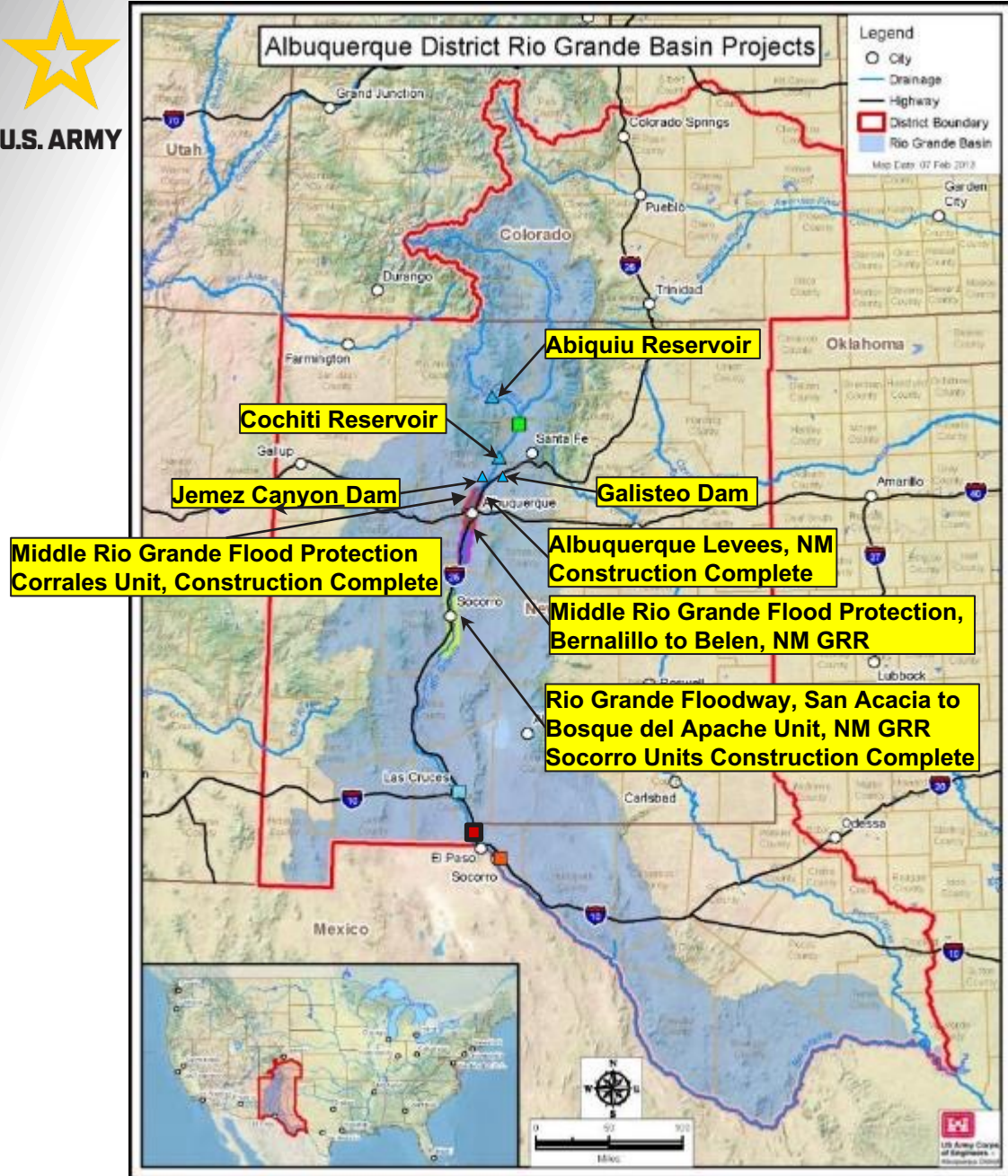




U.S. ARMY



USACE Operated Dam Projects and Levee Projects Authorized by 1948 Flood Control Act



Area of consideration: Espanola Valley to Truth or Consequences

USACE responsibility in coordinated development by the USACE and BOR

- Upstream dams provide flood reduction
- Clear water releases to affect planned channel degradation
- Once channel improvements complete;
 - Replace spoil banks or
 - Construct new levees as needed



U.S. ARMY

HABITAT RESTORATION



QUESTIONS?



Abiquiu Lake



Cochiti Lake