

U.S. ARMY CORPS OF ENGINEERS ROCK ISLAND DISTRICT

2022 SAME/SMPS ST. LOUIS 8TH ANNUAL INDUSTRY DAY

Troy Robbins

U.S. Army Corps of Engineers

Rock Island District

21 April 2022



US Army Corps
of Engineers®



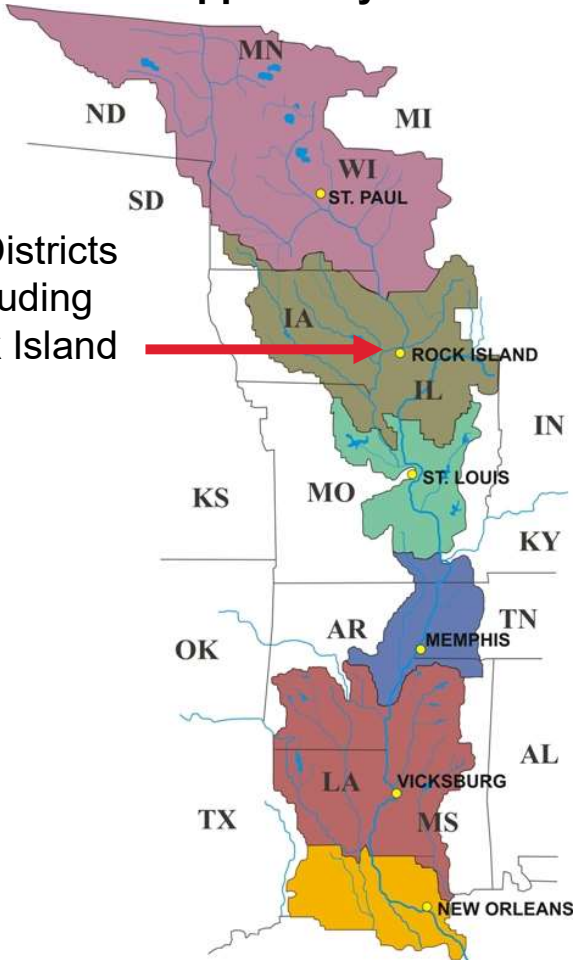


DIVISION AND DISTRICT BOUNDARIES

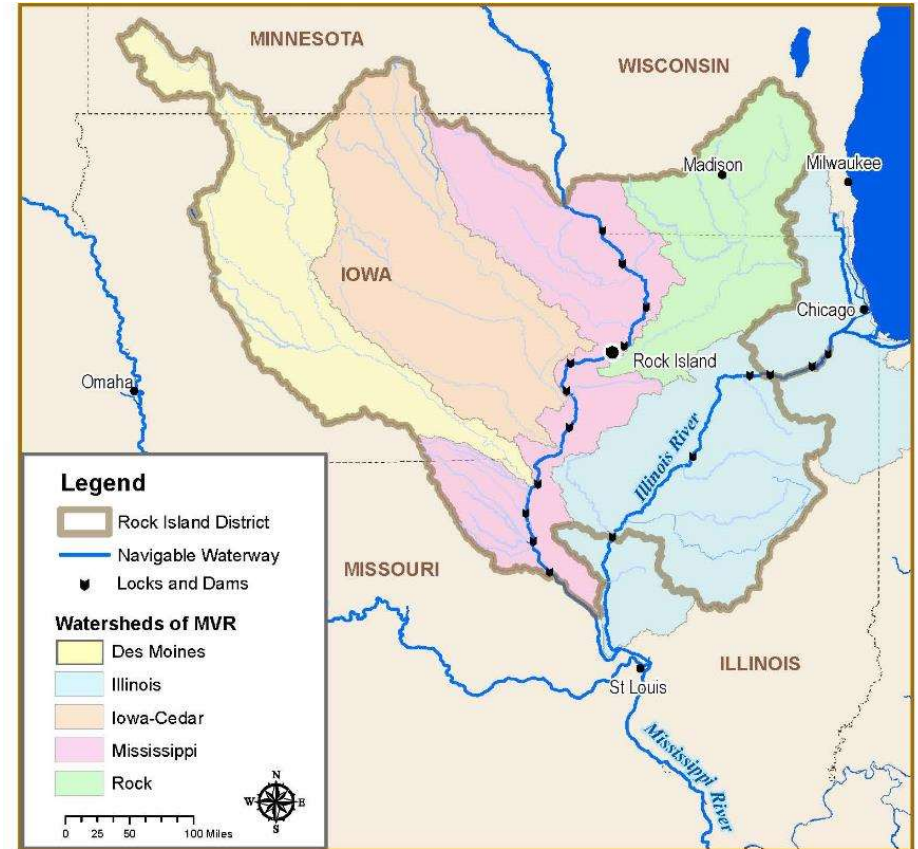


Mississippi Valley Division

Six Districts including Rock Island



Rock Island District



Five river basins in portions of:
Iowa – Illinois – Wisconsin – Minnesota – Missouri



ROCK ISLAND DISTRICT SMALL BUSINESS PROGRAM



Provides outreach and information to ensure small businesses have the maximum practicable opportunity to participate in Rock Island District acquisitions through contracts or subcontracts.



Examples of Outreach and Informational Events include:

- Roundtable Discussions*
- Large Business Trainings*
- District Industry Days*
- AGC Regional Industry Meeting*



SB Programs/Goals	FY21 Goals	FY21 Actual Obligations	FY21 Actual %	FY22 Goals
Small Business	60%	\$75,000,631	67.23%	48%
Small Disadvantaged Business	25%	\$48,899,451	44.73%	30%
Woman Owned SB	6%	\$20,257,650	18.16%	12%
HUBZone	9%	\$24,749,740	22.18%	14%
Service-Disabled Veteran SB	5%	\$13,069,834	11.72%	5%

Total FY21 Contracting Obligations = \$111,562,869



ROCK ISLAND DISTRICT MISSION

Deliver vital engineering and water resource solutions in collaboration with our partners to secure our Nation, reduce disaster risk and enhance quality of life, providing value to the region and Nation.

Primary Business Lines



Emergency Response



Navigation



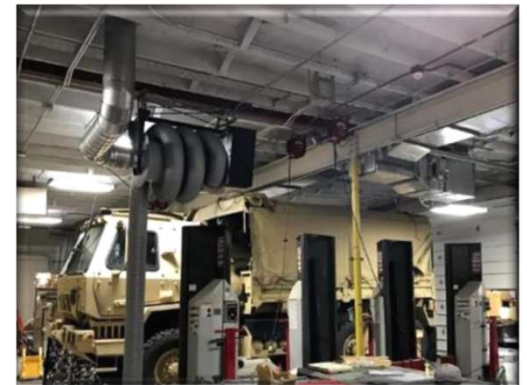
Flood Risk Management



Recreation



Environmental Stewardship



Support to Military Programs



ROCK ISLAND DISTRICT - VALUE TO THE NATION



EMERGENCY RESPONSE

Flood Fight Supplies Provided in 2019

4.2 M Standard Sandbags
6,000 Large (airlift) Sandbags
>6 Miles HESCO Gabion Baskets
>2 Miles Polyethylene Sheeting
104 Portable Pumps



RECREATION

1850 Campsites
97 Recreation Sites
38 Boat Ramps
10 Swimming Beaches
5 Visitor Centers
16.8 M Annual Visitation



NAVIGATION

18 Lock & Dam Sites
582 Miles of Navigation Channel
396 M Tonnage Locked in 2018
>\$1 B Annual Cost Benefit



ENVIRONMENTAL STEWARDSHIP

Upper Mississippi River Restoration
 Habitat Rehabilitation Projects

16 In Planning/Design
7 Under Construction
56 Completed to Date
106,000 Acres Restored to Date
\$33.17 M Annual Budget



FLOOD RISK MANAGEMENT

146 Levee Drainage Systems
>900 Miles of Levees
 Flood Risk Management Reservoirs

2 (dry) Illinois
3 (wet) Iowa
>\$17 B Flood Damages Prevented

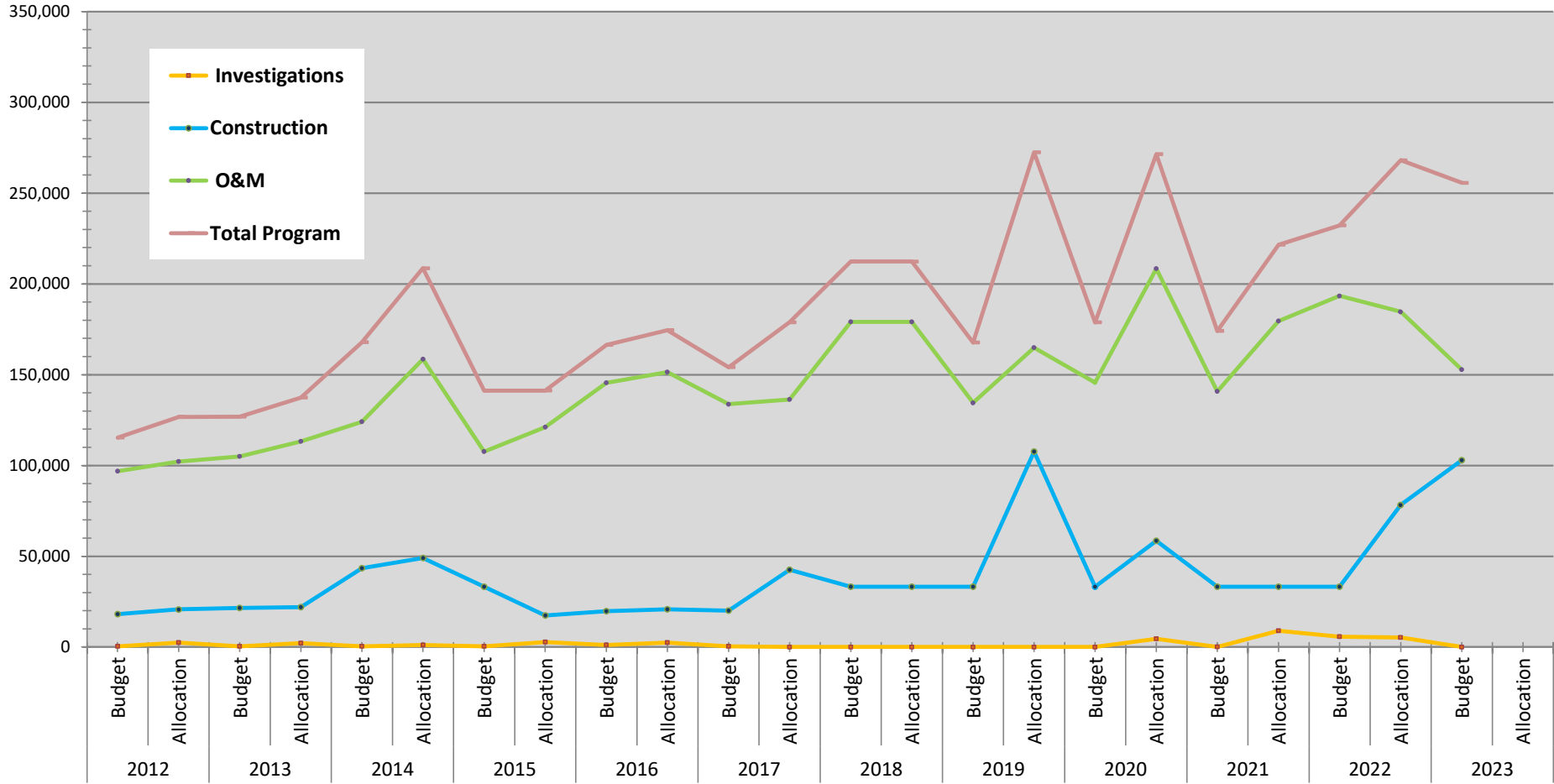


MILITARY SUPPORT

- Overseas Contingency Operations
- Contracting Support for the 88th Regional Support Command
- Support & Partnering w/Active Duty Brigades, Reserve & ROTC Units
- Support to Wounded Warriors



FUNDING TRENDS FY12 - FY22





FY22 ALLOCATIONS



Rock Island District FY22 APPROPRIATIONS - \$268.1M (*Regular Appropriations*)

▪ **INVESTIGATIONS - \$5.2M**

- Brandon Road - \$4.94M
- Illinois 519 - \$0.25M

▪ **CONSTRUCTION - \$78.3M**

- UMRR - \$33.2M
- NESP - \$45.1M

▪ **OPERATIONS & MAINTENANCE - \$184.6M**

- Mississippi River - \$81.3M
- Illinois Waterway - \$61.7M
- Saylorville Lake - \$10.4M
- Lake Red Rock - \$25.8M
- Coralville Lake - \$4.9M
- Farm Creek - \$0.5M

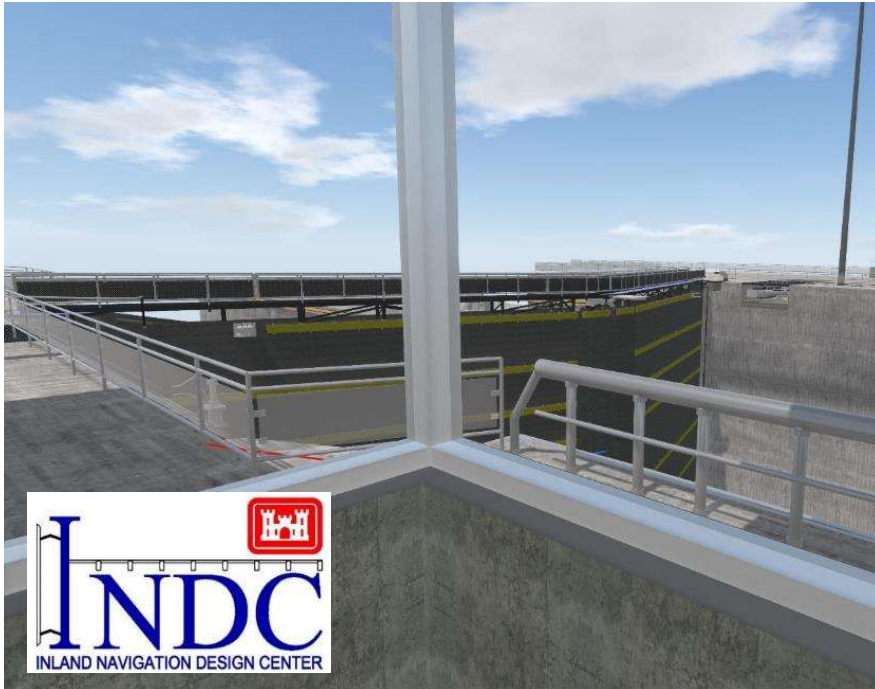




INLAND NAVIGATION DESIGN CENTER (INDC)



Rock Island District leads the USACE Mandatory Center of Expertise (MCX) for inland navigation engineering and design. INDC leads the engineering and design for new locks and dams, major rehabilitation and standardization of components at USACE inland navigation projects.



- Soo Lock, New Lock
- NESP Lock 25 new 1200ft Lock
- Upper Ohio, Montgomery L/D, New Lock
- Brazos River, New Sector Gate
- Brandon Road Interbasin project
- Major Rehabilitation studies (13)
- H.M. Chittenden Lock, Miter Gate Replacement
- W.P. Franklin L/D, Lift Gate Replacement (composite)
- Canaveral Lock, Sector Gate Replacement (composite)



UPPER MISSISSIPPI RIVER RESTORATION

Construction Underway

- Huron Island
- Beaver Island
- Keithsburg Division Stage I
- Steamboat (late FY 22)

Design Underway

- Steamboat Island Stage I

Feasibility Study Underway

- Lower Pool 13
- Green Island
- Pool 12 Forestry
- Quincy Bay





NAVIGATION & STRUCTURAL



Project	Location	Anticipated Advertisement	Estimated Range
Dresden Miter Gate Install, Machinery & Electrical Replacement	Will County, IL	3 rd Qtr FY22	>\$10M
Brandon Rd Miter Gate Install & Machinery Replacement	Will County, IL	4 th Qtr FY22	>\$10M
Starved Rock/Marseilles Miter Gate Machinery Replacement	La Salle County, IL	4 th Qtr FY22	\$5M-\$10M
Lock and Dam 21 Concrete Replacement	Adams County, IL	4 th Qtr FY22	\$1M-\$5M
Red Rock Sluice Gate Renovations	Marion County, IA	4 th Qtr FY22	\$1M-\$5M
Red Rock Tainter Gate Fabrication	Marion County, IA	4 th Qtr FY22	\$5M-\$10M



CIVIL, CHANNEL & ECOSYSTEM RESTORATION



Project	Location	Anticipated Advertisement	Estimated Range
Saylorville Water & Sewer Infrastructure Repairs	Polk County, IA	3 rd Qtr FY22	\$1M-\$5M
Saylorville Trash Rack Debris Removal	Polk County, IA	3 rd Qtr FY22	\$100K - \$500K
Red Rock Waterline Replacement	Marion County, IA	4 th Qtr FY22	\$500K-\$1M
Red Rock Shoreline Protection	Marion County, IA	3 rd Qtr FY22	\$1M-\$5M
Saylorville Shoreline Repairs	Polk County, IA	2 nd Qtr FY22	\$1M-\$5M
UMRR Steamboat Island Stage I HREP	Cinton County, IA	4 th Qtr FY22	\$1M-\$5M



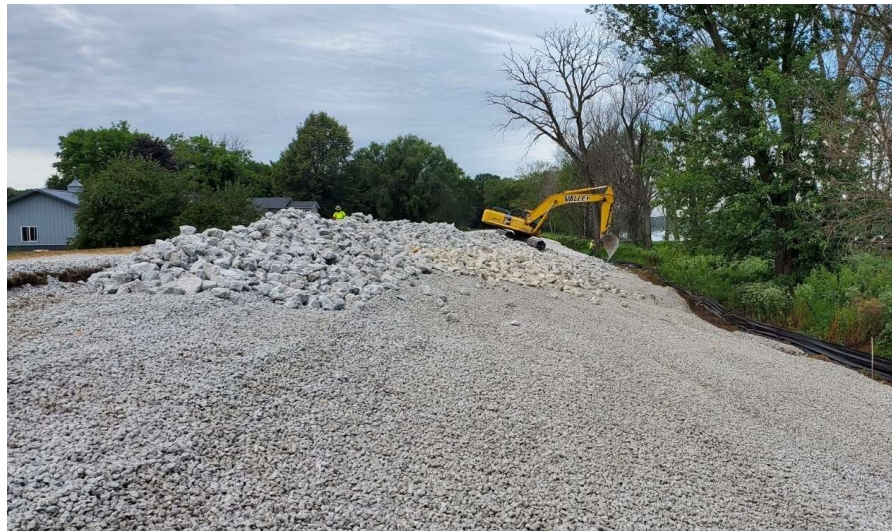
LEVEE REPAIRS (PL 84-99)



Record flooding in 2019 and additional flooding in 2020 caused widespread damage to many levee and drainage systems.

Levee Project Repair Progress

- 19 Construction Complete
- 8 Construction Underway
- 1 Finishing Design/Contract Solicitation
- 3 In Project Design





EMERGENCY REPAIRS (PL 84-99)



Project	Location	Anticipated Advertisement	Estimated Range
Hunt Lima Levee Repairs	Hancock County, IL	Solicitation Underway	\$5 - \$10M
Two Rivers Levee Repairs	Des Moines County, IA	3 rd Qtr FY22	\$1 - \$5M
East Peoria Sanitary District	Tazwell County, IL	3 rd Qtr FY22	\$500K - \$1M
Sny Levee Repair Reach 1	Pike County, IL	1 st Qtr FY23	\$250K - \$500K



BUILDING RENOVATIONS – 88TH RD & OTHERS



Project	Location	Anticipated Advertisement	Estimated Range
CELRE - Detroit Area Office, Building 403 & 405 Renovation	Detroit, MI	2 nd Qtr FY22	\$1M-\$5M
88 th RD - Renovate OMS and Storage Building	Homewood, IL	2 nd Qtr FY22	\$1M-\$5M
88 th RD - Expand Front Entrance and Repair Gate	Milwaukee, WI	3 rd Qtr FY22	\$1M-\$5M
88 th RD - Provide Energy and resiliency upgrades for Various Building	Arlington Heights, IL	3 rd Qtr FY22	\$1M-\$5M
88 th RD - Renovate USARC Building	Waterloo, IA	4 th Qtr FY22	\$1M-\$5M

BRANDON ROAD INTERBASIN PROJECT



US Army Corps
of Engineers®



INCREMENT I

FEASIBILITY LEVEL PROPOSED INCREMENTS SUBJECT TO CHANGE
PENDING COMPLETION OF DESIGN



Increment I

- Site Prep
- Channel Rock Excavation
- Air Bubble Deterrent
- Narrow Acoustic Deterrent Array
- Control Building
- Upstream Boat Launch

FY23-25, complete Plans and Specs for Increments I and II and fully fabricate and construct all of Increment I components. Timeline for structural implementation will be further developed in the PED phase.





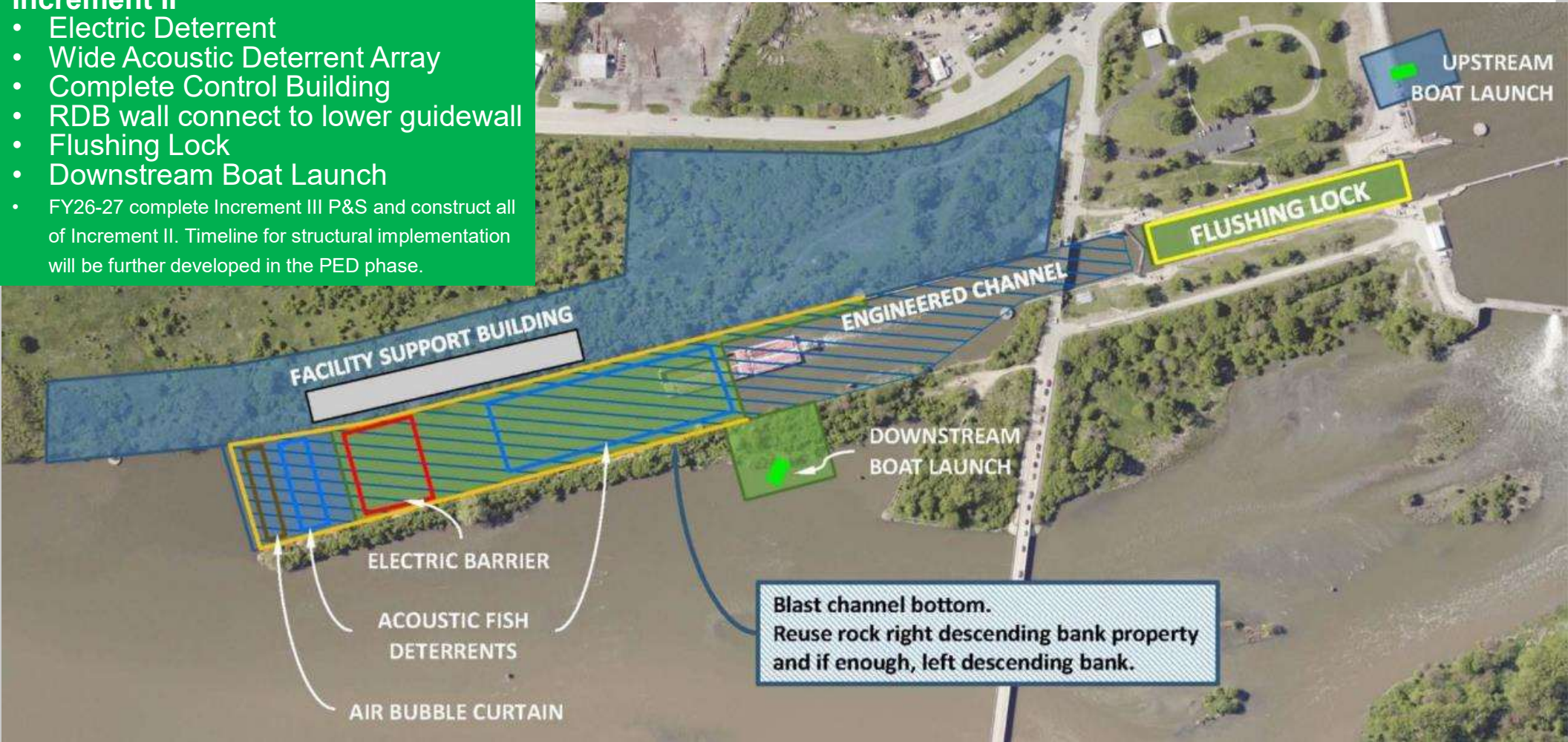
INCREMENT II

FEASIBILITY LEVEL PROPOSED INCREMENTS SUBJECT TO CHANGE
PENDING COMPLETION OF DESIGN



Increment II

- Electric Deterrent
- Wide Acoustic Deterrent Array
- Complete Control Building
- RDB wall connect to lower guidewall
- Flushing Lock
- Downstream Boat Launch
- FY26-27 complete Increment III P&S and construct all of Increment II. Timeline for structural implementation will be further developed in the PED phase.





INCREMENT III

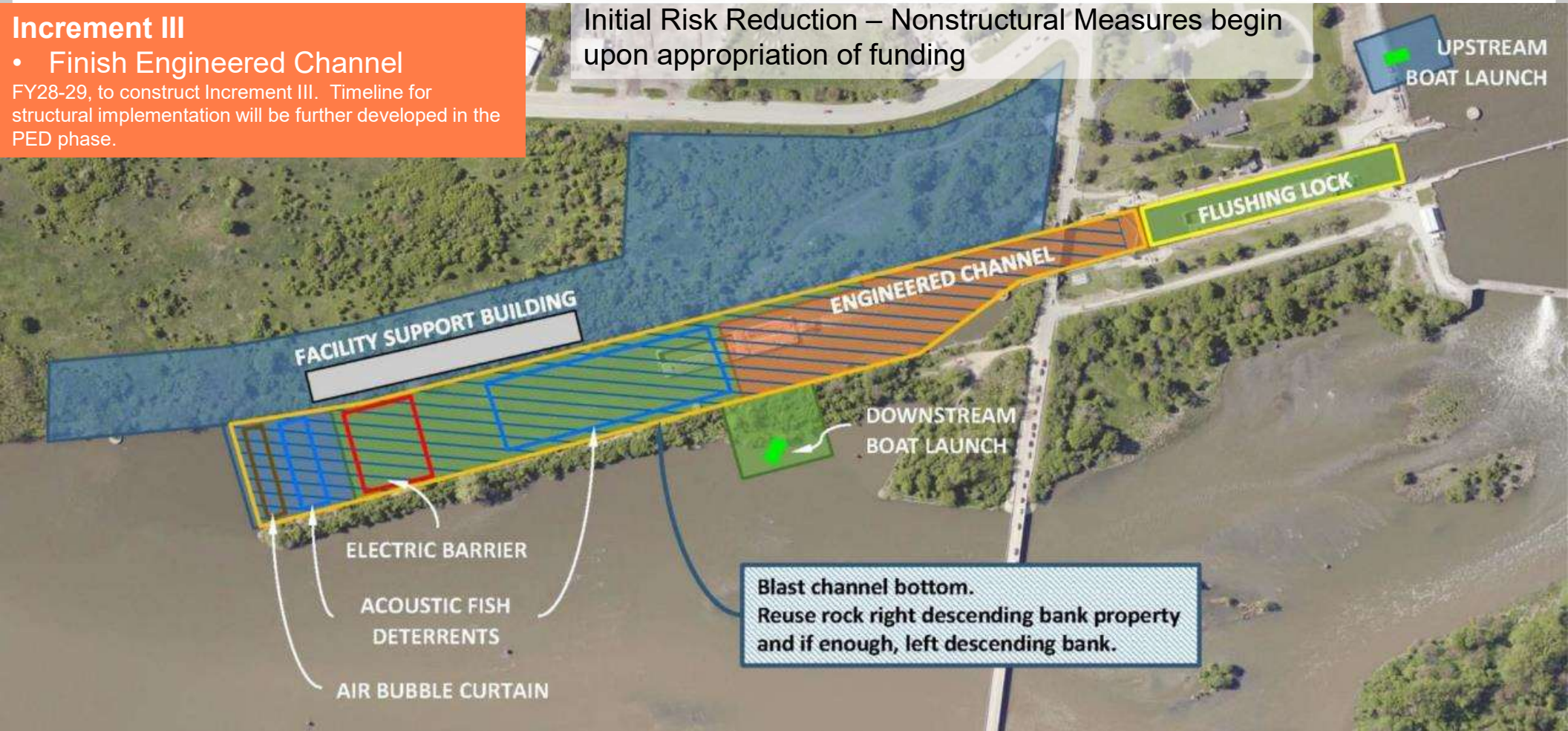
FEASIBILITY LEVEL PROPOSED INCREMENTS SUBJECT TO CHANGE
PENDING COMPLETION OF DESIGN



Increment III

- Finish Engineered Channel
FY28-29, to construct Increment III. Timeline for structural implementation will be further developed in the PED phase.

Initial Risk Reduction – Nonstructural Measures begin upon appropriation of funding





NAVIGATION AND ECOSYSTEM SUSTAINABILITY PROGRAM (NESP) INFRASTRUCTURE INVESTMENT AND JOBS ACT (IIJA) PROJECTS



- The Navigation and Ecosystem Sustainability Program received a construction new start and construction general appropriations on Jan. 19, 2022, through the Infrastructure Investment and Jobs Act. The two projects funded were the Lock 25 1200' Lock and Lock 22 Fish Passage projects at \$732M and \$97.1M respectively.
- The NESP construction new start and construction appropriations mean that USACE will immediately begin developing a plan for completion of both projects, with a goal to begin construction as quickly as possible.
- The combination of ecosystem and navigation in a single USACE program required many years of coordination with both the navigation and ecosystem partners and it will alter the future of the Upper Mississippi River System (UMRS) to ensure it remains the vital transportation and ecosystem corridor for the next 100+ years.

For additional information see the website: <https://www.mvr.usace.army.mil/Missions/Navigation/NESP/>



LOCK 25 NEW 1200' LOCK



- The Lock 25 new 1200' Lock was fully funded at \$732M. This funding will be used to complete design and construct the project. The IJA waived the Inland Waterways Trust Fund 65%/35% cost-share requirement.
- The primary purpose of the project is to improve efficiency, reliability, and safety for Navigation traffic transiting the facility along with adding additional operational redundancy at Lock 25.
- When complete, the new lock will reduce per lockage times from two and a half hours or more to approximately 45 minutes.

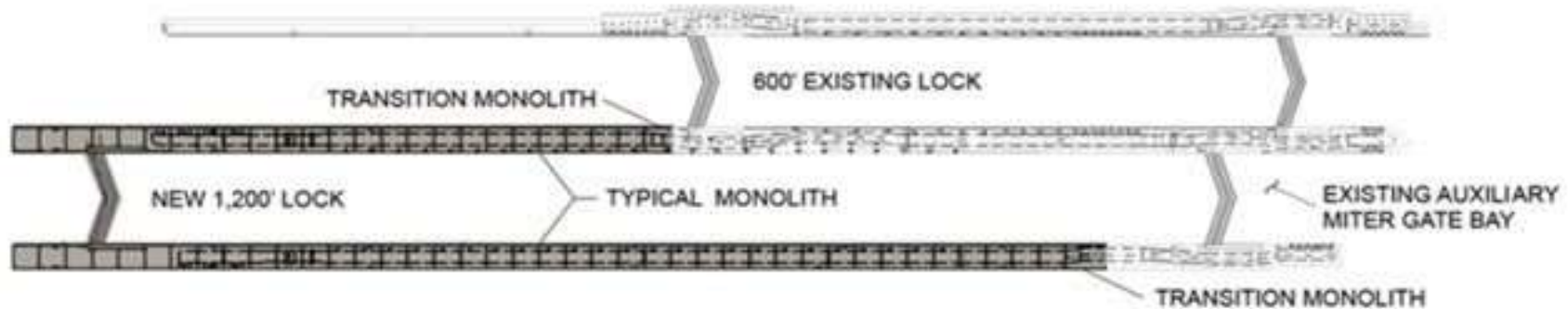




PROJECT OBJECTIVES



- Design and construction of a new 1,200-foot pile-founded lock chamber to be constructed on the downstream side of the existing auxiliary miter gate bay.
- Design and construction of a new upstream, ported approach wall.
- Design and construction of a downstream approach wall designed to block flow through the wall.
- The existing 600-foot lock will remain in operation during the design and construction of the new lock and will become an auxiliary lock chamber after completion.





FUTURE ENGAGEMENTS WITH INDUSTRY FOR NESP L25 1200FT LOCK



- **Phase 1 Construction**

- Look for a **sources sought** request in the next couple of weeks regarding the Phase 1 Construction Requirement
- Phase 1 Construction Requirement **solicitation** is anticipated to open sometime in late May to early June timeframe
- A **pre-bid site visit** for the Phase 1 Construction requirement is planned to be scheduled during the solicitation period. Details of that visit will be included in the actual construction solicitation

- **Remainder of Lock Construction Industry Engagement**

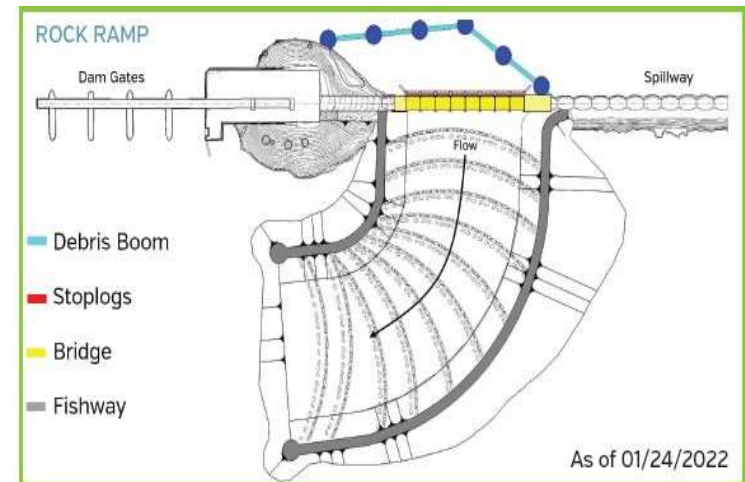
- We are planning an initial L25 1200ft Lock **industry day** in June 2022. This date is preliminary and scope is still being developed.
- We anticipate using this initial engagement to **share further information** on the project scope and anticipated delivery method.
- Our planned objective for this engagement will be to **solicit industry feedback** on the preliminary plan in order to maximize the efficiency of project delivery.



LOCK AND DAM 22 FISH PASSAGE



- The Lock and Dam 22 fish passage project was funded at \$97.1M. This funding will allow for completion of design and initiation of construction.
- The primary purpose of the project is to increase access to upstream mainstem river and tributary habitats. Increased access to upriver habitats will result in an increase in the size and distribution of 30 native migratory fish populations, effectively returning this area of the river to a pre-lock and dam state.
- When complete, the fish passage structure will permanently restore the connection between river pools for native fish species.





CEDAR RAPIDS, IOWA FLOOD RISK MANAGEMENT PROJECT



Cedar Rapids - Flood Risk Management Project

Feature Quantities	Total	Active			% Design Complete	% Construction Complete
		Construction	Complete	Remaining		
Levee (ft)	8,962	2,231	3,721	3,010	99%	42%
Floodwall (ft)	10,678	-	2,434	8,244	91%	23%
Pump Station (#)	7	1	2	4	98%	29%
Road Closures (#)	8	1	2	5	98%	25%
Railroad Closures (#)	4	1	-	3	88%	0%
Channel Modification (ft)	2,974	-	-	2,974	100%	0%

Current Status

Pump Station Status

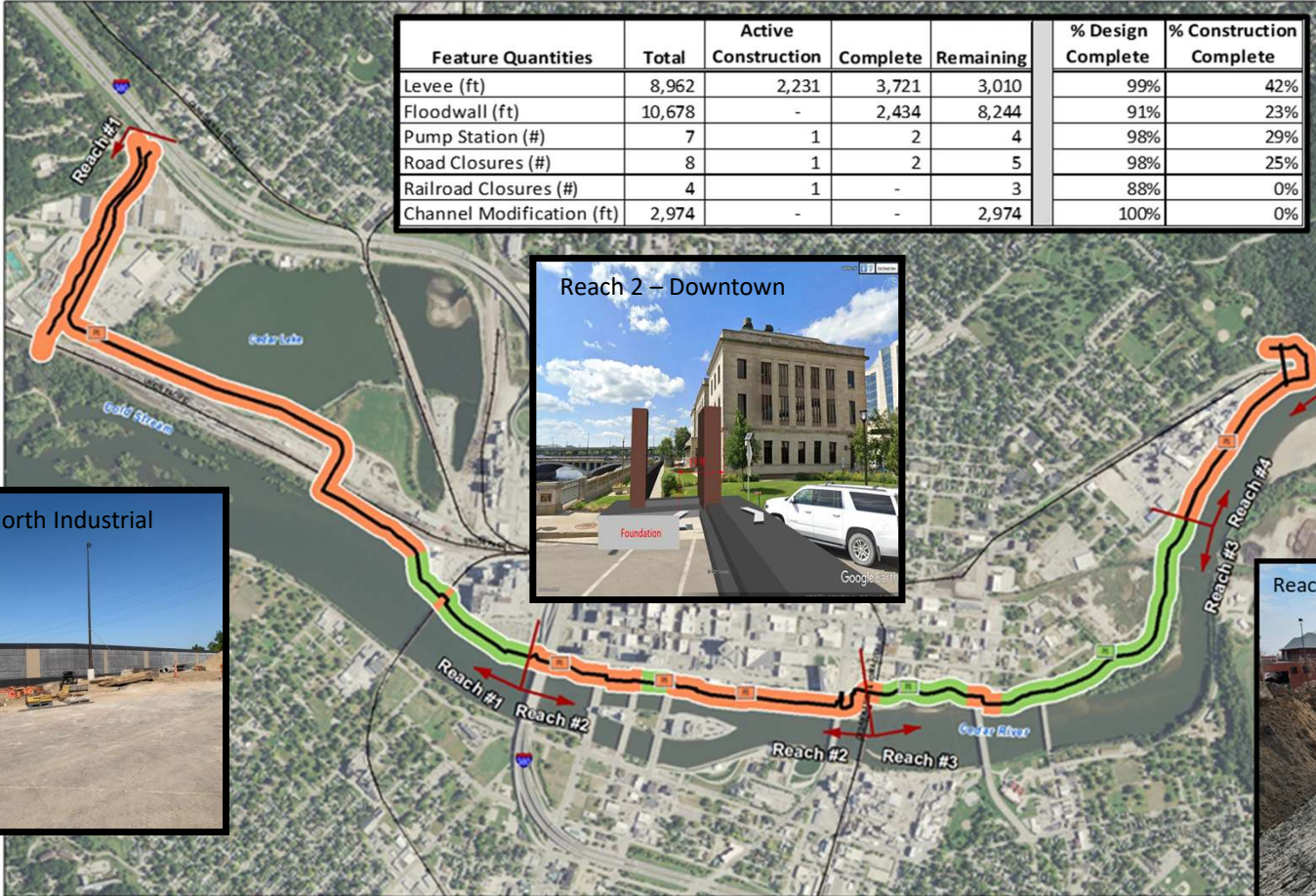
- Completed Work
- Remaining Work

Alignment

- Alignment

Feature Status

- Completed Work
- Remaining Work





CEDAR RAPIDS, IOWA FLOOD RISK MANAGEMENT PROJECT



Regional effort with design support from St. Paul District and Multiple AE's

Project	Location	Anticipated Advertisement	Estimated Range
McCloud Run Lower Reach Channel, Culverts, and Levee	Linn County, IA	2 nd Qtr FY22 (A)	\$10M-\$25M
12th Avenue SE and CRANDIC RR Roller Gate Closure Structures	Linn County, IA	3 rd Qtr FY22 (A)	\$10M-\$25M
EF Avenue Roller Gates, 2nd Avenue SE Closure Structure, A-Avenue Pump Station and Floodwall	Linn County, IA	3 rd Qtr FY22	\$25M-\$50M
McCloud Run Middle Reach Channel, Trail Bridge, Floodwall, 10th Avenue NE Road Raise	Linn County, IA	4 th Qtr FY22	\$10M-\$25M
Cedar Lake Pump Station	Linn County, IA	2 nd Qtr FY23	\$10M-\$25M
Downstream River Floodwall, Pump Station, Culverts and Closures	Linn County, IA	4 th Qtr FY23	\$25M-\$50M
Downtown East Removable & Permanent Floodwall	Linn County, IA	2 nd Qtr FY24	\$25M-\$50M
Cedar Lake South Railyard Floodwall	Linn County, IA	2 nd Qtr FY24	\$10M-\$25M
Cedar Lake Railyard Roller Gate Closure Structures	Linn County, IA	2 nd Qtr FY24	\$10M-\$25M
Cedar Lake South Shore Levee	Linn County, IA	1 st Qtr FY25	\$5M-\$10M



IWW CONSOLIDATED CLOSURES

- Work at 4 sites concurrently, 3 contracts, 3 Locks requiring dewatering
- Onsite work to take place during a summer closure/restriction period
 - Starting in June and ending in late summer to avoid fall harvest seasons
- Dresden Lock Rehabilitation ~120 days
- Brandon Road Rehabilitation ~120 days
- Starved Rock and Marseilles Machinery Rehabilitation ~90 days





DRESDEN LOCK REHABILITATION

- Solicitation anticipated early summer
- ~120 Day full closure
- Combination of Contractor work and USACE Operations Crews
 - USACE Ops to remove existing miter gates, install new miter gates. Gov furnished operating machinery.
 - Contractor work primarily:
 - Set bulkheads
 - Dewatering system, dewater, rewater, and maintain
 - Miter gate machinery replacement
 - Miter gate sill, quoin, and anchorage replacement
 - Electrical system replacement, duct bank
 - Culvert valve recess replacement with precast segments.
 - Bubbler system install
 - New control stands



BRANDON RD MITER GATE INSTALL AND MACHINERY REHABILITATION



- Solicitation anticipated late summer

- ~120 Day full closure

- Combination of Contractor work and USACE Operations Crews
 - USACE Ops to set bulkheads, dewater, rewater, remove existing miter gates, install new miter gates. Gov furnished operating machinery.
 - Contractor work primarily:
 - Miter gate machinery replacement
 - Miter gate sill, quoin, and anchorage replacement
 - Miter gate disposal
 - New control stands



STARVED ROCK & MARSEILLES MACHINERY REHABILITATION



- Solicitation anticipated late summer
- ~90 Day full closure
- Starved Rock
 - Combination of Contractor work and USACE Operations Crews
 - USACE Ops to set bulkheads. Gov furnished operating machinery.
 - Contractor work primarily:
 - Machinery replacement
- Marseilles
 - Combination of Contractor work and USACE Operations Crews
 - USACE Ops to set bulkheads, dewater lock chamber, rewater lock chamber. Gov furnished operating machinery.
 - Contractor work primarily:
 - Machinery replacement
 - Electrical duct bank cross over



UPCOMING EVENTS



28 April 2022

Vicksburg Industry Day

25 May 2022

New Orleans Industry Day

1-3 November 2022

SAME Small Business
Conference – Nashville, TN



DOING BUSINESS WITH US



Websites for Industry Partners:

www.mvr.usace.army.mil/Business-With-Us/Small-Business/

<https://www.mvr.usace.army.mil/Business-With-Us/Contracting/>

- Upcoming training for industry or outreach events
- Contract Forecast Lists
- How-To's for Finding Opportunities
- Subcontracting Opportunities

Individualized Meetings Available to Discuss:

- Projects/programs and doing business with the District
- Potential connection with other District personnel and/or other resource partners
- Inclusion on District email list for ongoing communication

The screenshot shows the website's navigation menu with options: About, Business With Us, Missions, Locations, Careers, Media, Library, Contact, and Coronavirus. The main content area is titled "COVID-19 Information for Contractors" and lists four items:

1. If you are a current contractor for a USACE Rock Island District contract and COVID-19 is affecting your operations or if you have questions about effects on contract performance, please contact your contracting officer.
2. Industry partners interested in any contract opportunities or market research requests please visit: <https://www.usace.army.mil/Business-With-Us/Contracting/>. Contractors can provide capability statements directly to: COVIDContracting@usace.army.mil. All questions regarding COVID-19 contracting opportunities can be directed to the USACE Directorate of Contracting email using the link on the website listed above.
3. [Contracting in Disasters: What Companies Can Do To Help](#) - A message from the Contracting Director
4. Small Business Administration Resources for COVID-19: <https://www.sba.gov/disaster-assistance/coronavirus-covid-19>

Below this is the "Small Business Program" section, which states: "The Rock Island District Small Business Program ensures that small businesses have the maximum practicable opportunity to participate in Rock Island District acquisitions through contracts or subcontracts. The District's program provides outreach to inform small businesses on how to do business with us." It also mentions that the program provides advice and assistance to the Rock Island District workforce on all aspects of the Small Business Program.

At the bottom right, there is a "Useful Links/Resources" section with the following links:

- [beta.SAM.gov](https://beta.sam.gov)
- [Find Contracting Opportunities](#)
- [Rock Island District Contracting](#)
- [USACE Small Business Program Guide](#)
- [Small Business Regulatory Enforcement Fairness Act](#)



STAY CONNECTED



On Social Media



www.linkedin.com/company/us-army-corps-of-engineers-rock-island-district



www.facebook.com/RockIslandDistrictUSACE



<https://twitter.com/USACERockIsland>



www.instagram.com/usacerockisland/



www.youtube.com/c/USACERockIslandDistrict

On Mobile Devices

Download the
USACE Rock Island
Mobile App



Available on Apple and Android devices



POINTS OF CONTACT



Rock Island District Commander
Col. Jesse T. Curry
(309) 794-5249

Engineering & Construction Roger Perk (309) 794-5227	Programs & Project Management Kimberly Thomas (309) 794-5260	Operations Division Tom Heinold (309) 794-5401
Construction Branch Richard Busch (309) 794-5480	Contracting Division Shea Richardson (651) 290-5023	Small Business Programs Troy Robbins (309) 794-5205
Regulatory Branch Ward Lenz (309) 794-5370	Emergency Management Sarah Jones (309) 794-5206	Inland Navigation Design Center Andrew Barnes (309) 794-5640



QUESTIONS?

troy.a.robbyns@usace.army.mil