

US ARMY CORPS OF ENGINEERS KANSAS CITY DISTRICT

PROGRAM BRIEFING

Michael S. Coates
Chief, Program Management
Branch

October 21, 2021



"The views, opinions and findings contained in this report are those of the authors(s) and should not be construed as an official Department of the Army position, policy or decision, unless so designated by other official documentation."



**US Army Corps
of Engineers**





AGENDA

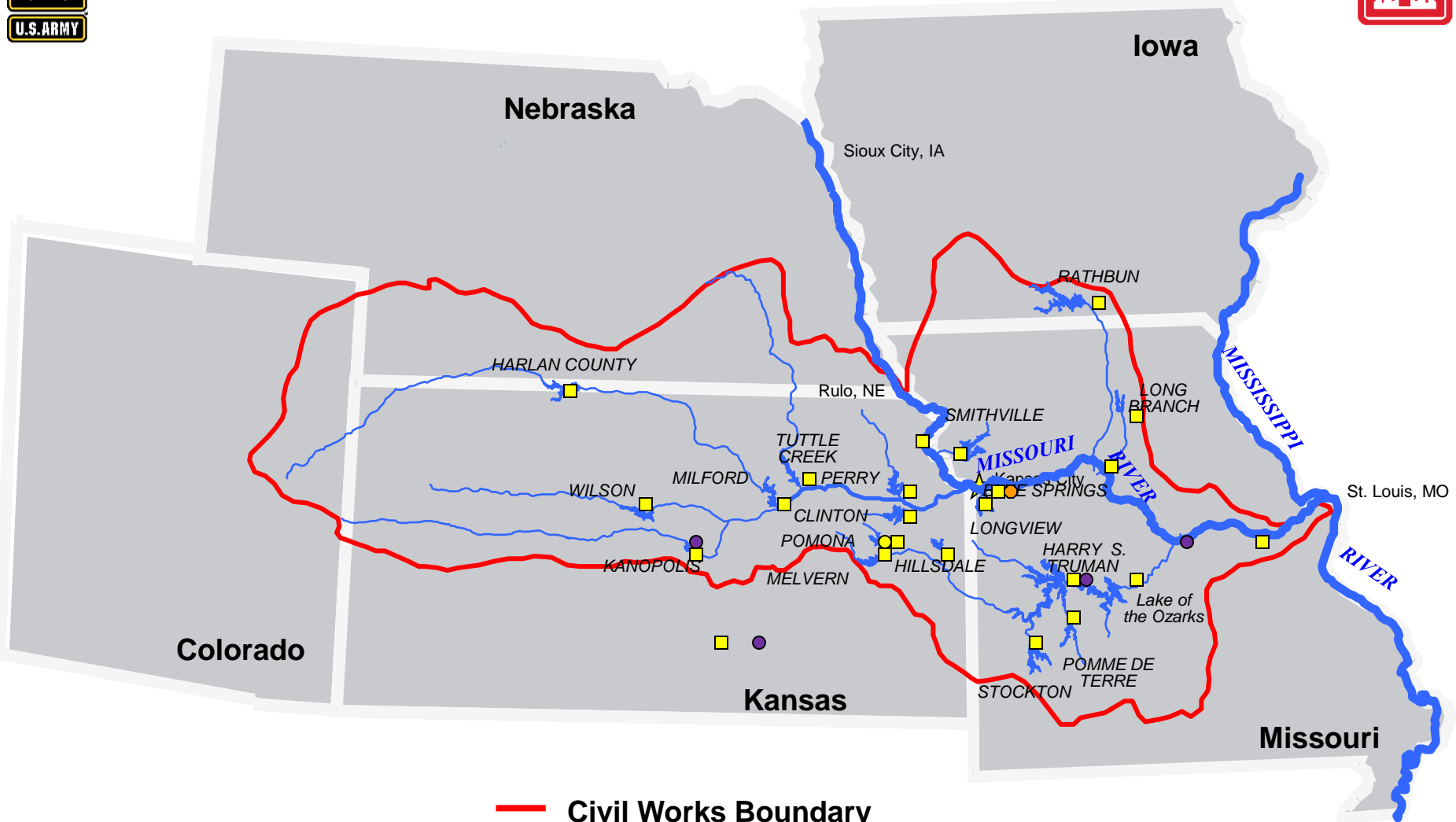


- Kansas City District Boundaries
- Workload Trend/AE Partnerships
- Program Briefs
 - Civil Works and Operations
 - Military
 - Environmental
- Infrastructure Bill
- Contract Opportunities “Secrets to success”
- Points of Contact (POCs)/Web Links
- Upcoming Engagement Opportunities
- Questions





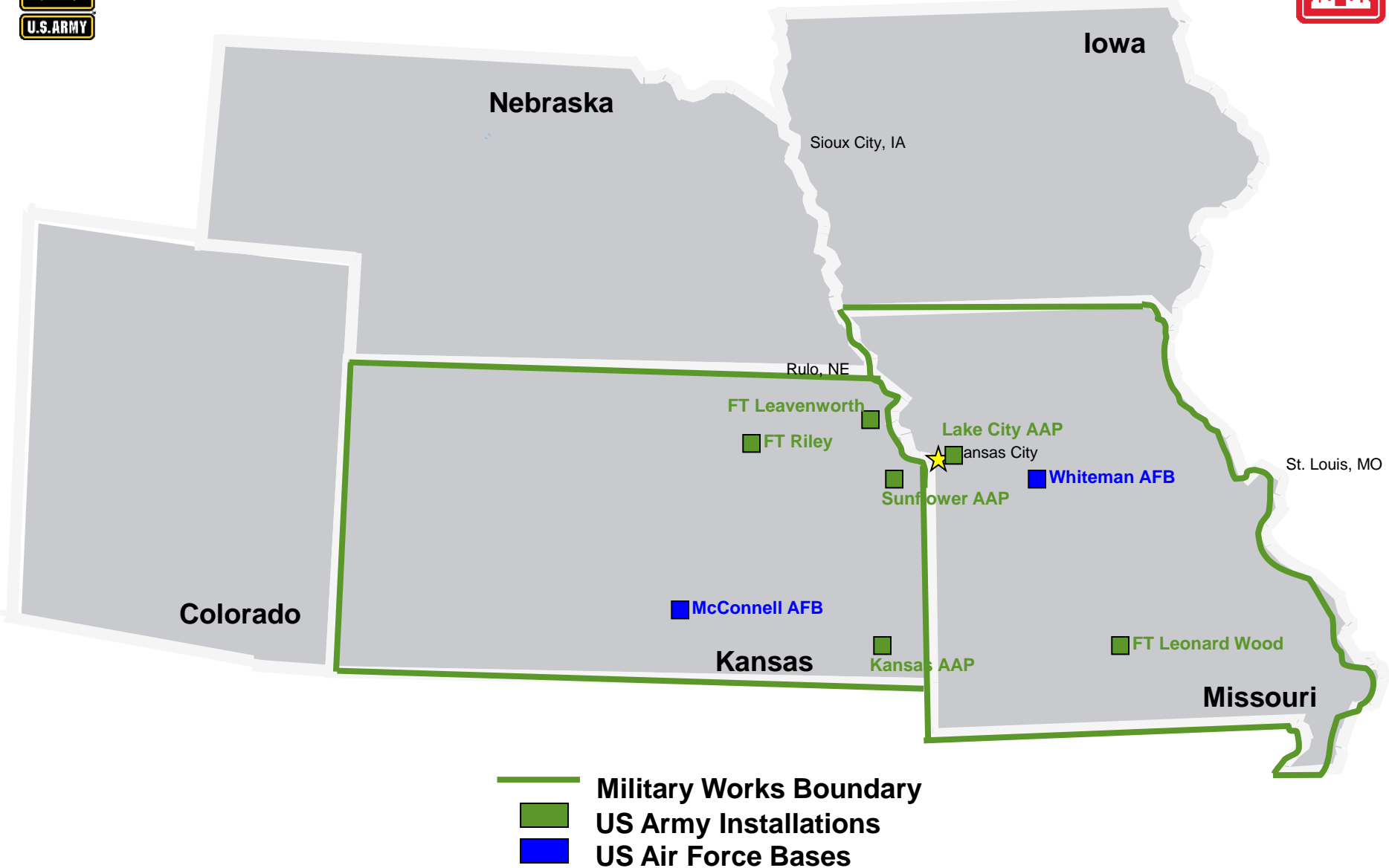
KANSAS CITY DISTRICT – CIVIL WORKS BOUNDARY



- Civil Works Boundary
- Operations Projects
- Regulatory Offices
- Missouri River Area Office

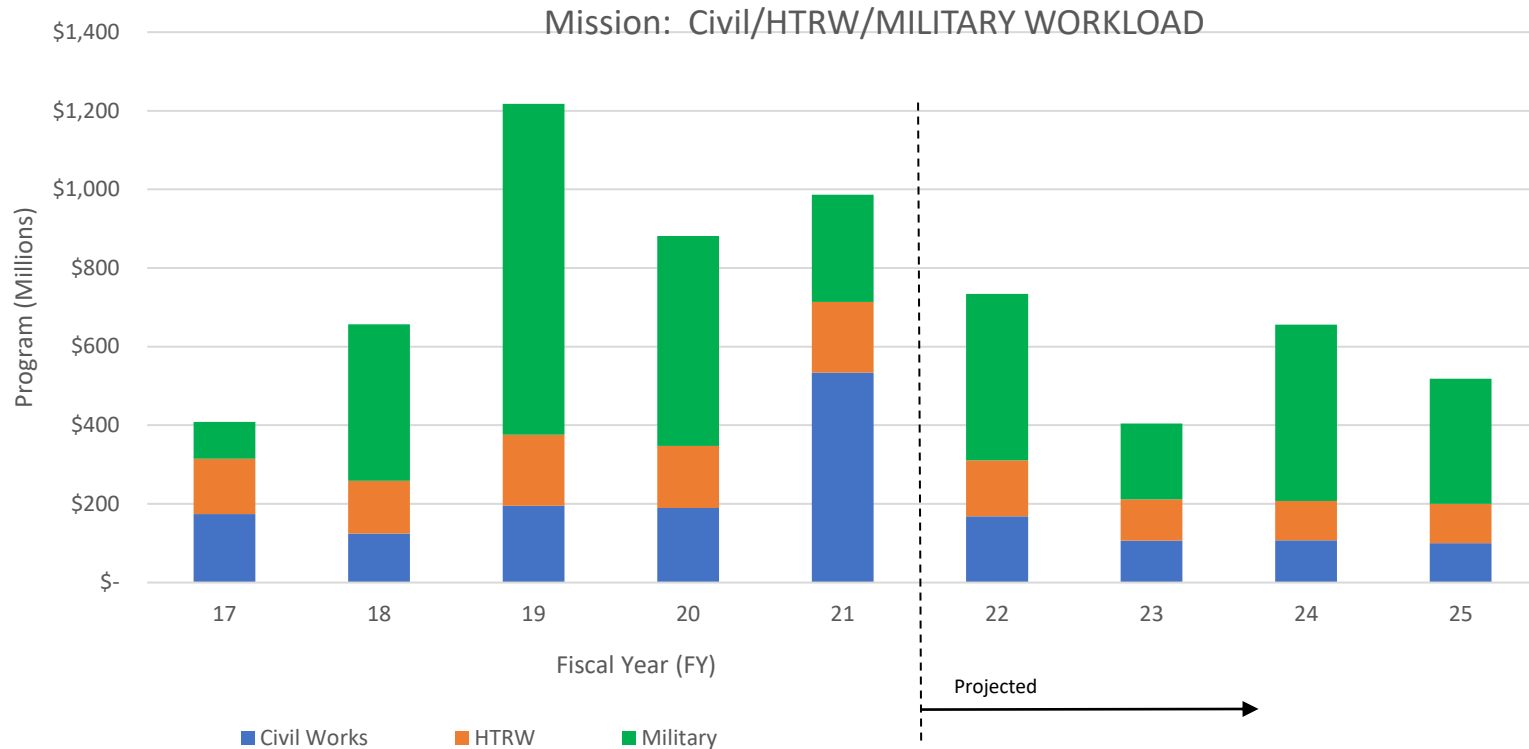


KANSAS CITY DISTRICT – MILITARY BOUNDARY





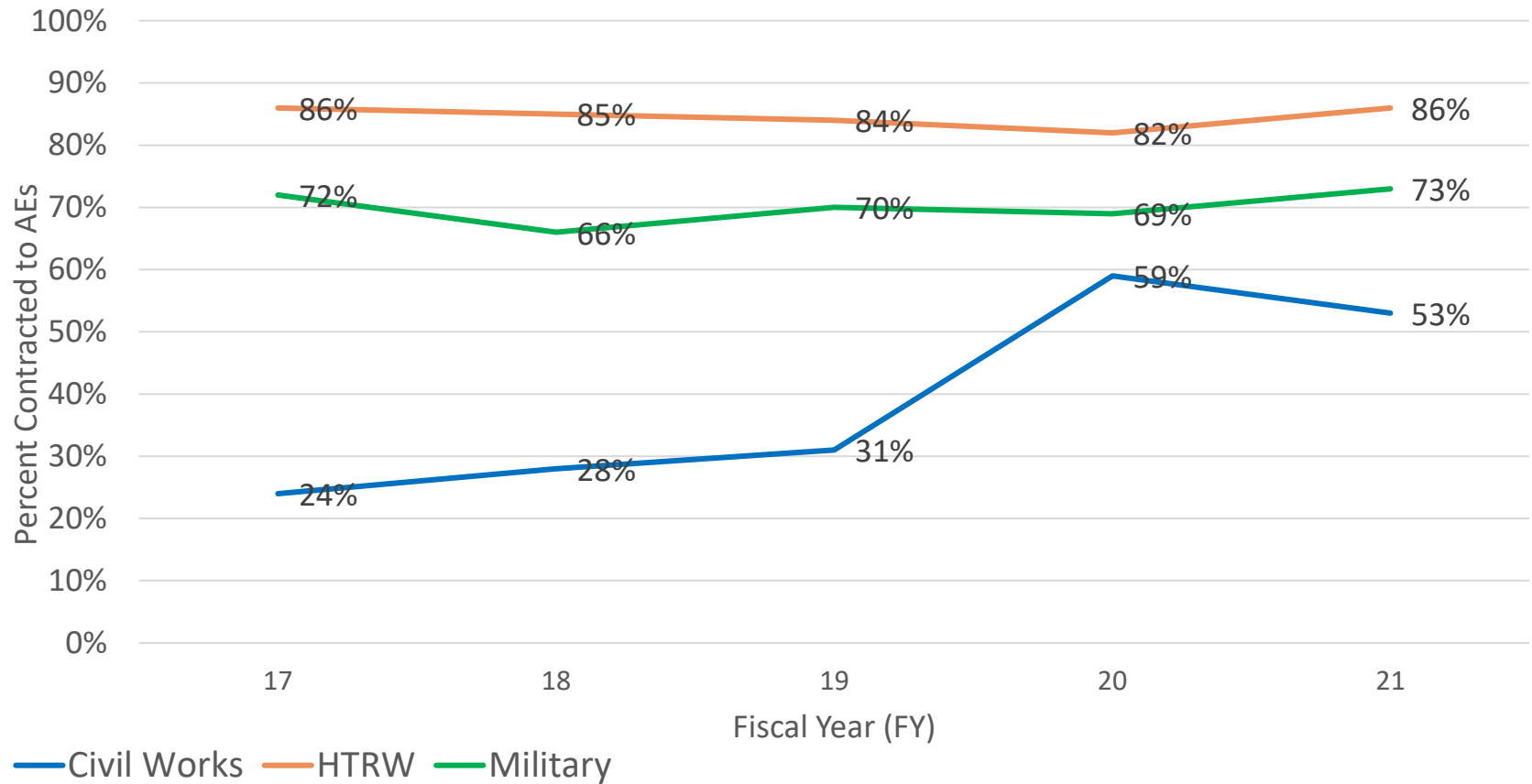
WORKLOAD TREND



Fiscal Year	17	18	19	20	21	22	23	24	25	Average
CIVIL WORKS	\$ 173.93	\$ 124.14	\$ 194.97	\$ 189.20	\$ 533.60	\$ 168.00	\$ 106.60	\$ 107.50	\$ 100.00	\$ 157.65
HTRW	\$ 140.85	\$ 134.38	\$ 180.60	\$ 157.99	\$ 179.87	\$ 142.76	\$ 105.00	\$ 100.00	\$ 100.00	\$ 169.93
MILITARY	\$ 93.41	\$ 398.59	\$ 841.62	\$ 534.53	\$ 273.28	\$ 423.23	\$ 192.47	\$ 448.29	\$ 318.05	\$ 445.83
Total	\$ 408	\$ 657	\$ 1,217	\$ 882	\$ 987	\$ 734	\$ 404	\$ 656	\$ 518	\$ 773

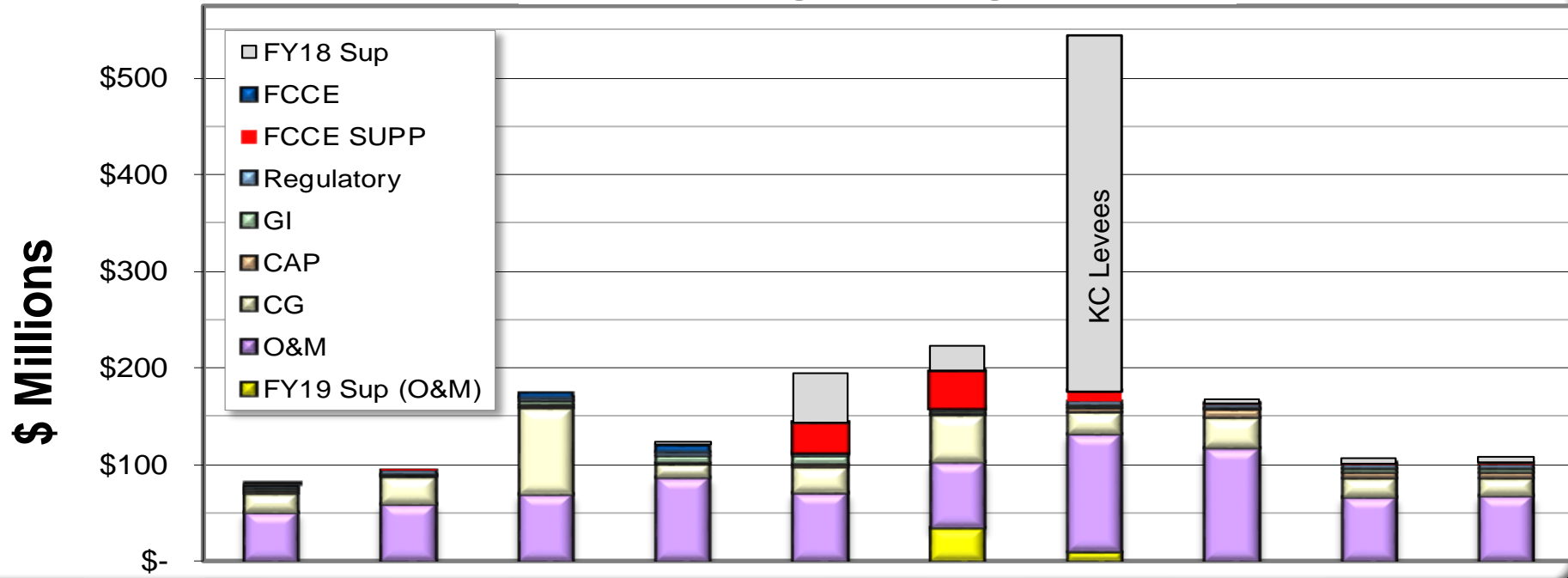


AE PARTNERSHIPS



AE Percentages	17	18	19	20	21
CIVIL WORKS	24%	28%	31%	59%	53%
HTRW	86%	85%	84%	82%	86%
MILITARY	72%	66%	70%	69%	73%

NWK CW Program Obligation Trend



	FY15	FY16	FY17	FY18	FY19	FY20	FY21	FY22	FY23	FY24
FCCE	\$ -	\$ -	\$ 5.00	\$ 7.39	\$ 0.59	\$ 0.58	\$ 0.65	\$ 0.67	\$ 0.68	\$ 0.68
FCCE SUPP	\$ -	\$ 1.00	\$ 0.50	\$ -	\$ 30.9	\$ 38.1	\$ 11.00	\$ 1.00	\$ 1.10	\$ 1.20
Regulatory	\$ 3.90	\$ 3.90	\$ 3.70	\$ 4.06	\$ 4.07	\$ 4.36	\$ 4.40	\$ 4.40	\$ 4.50	\$ 4.60
GI	\$ 1.56	\$ 1.70	\$ 5.26	\$ 7.06	\$ 7.78	\$ 3.30	\$ 2.63	\$ 2.00	\$ 3.60	\$ 3.70
CAP	\$ 4.12	\$ 0.52	\$ 2.09	\$ 1.83	\$ 3.68	\$ 1.00	\$ 4.80	\$ 7.20	\$ 6.00	\$ 6.00
CG	\$ 18.71	\$ 29.26	\$ 88.58	\$ 14.48	\$ 26.15	\$ 47.92	\$ 22.76	\$ 32.00	\$ 19.73	\$ 19.33
FY18 Sup				\$ 4.00	\$ 51.00	\$ 25.80	\$ 367.90	\$ 5.00	\$ 5.00	\$ 5.00
O&M	\$ 51.00	\$ 58.60	\$ 68.80	\$ 85.32	\$ 70.80	\$ 68.18	\$ 119.50	\$ 115.71	\$ 66.00	\$ 67.00
FY19 Sup (O&M)						\$ 33.48	\$ 10.10	\$ -	\$ -	\$ -
CW TOTALS	\$ 79.29	\$ 94.98	\$ 173.93	\$ 124.14	\$ 194.97	\$ 189.2	\$ 533.6	\$ 168.0	\$ 106.6	\$ 107.5
	Actual	Actual	Actual	Actual	Actual	Actual	Projected	Projected	Projected	Projected



CIVIL WORKS – LEVEES/FLOOD RISK PROJECTS CONSTRUCTION



Levee Rehab 2021 (~7 contracts) (SB)

- \$1M to \$10M total
- Advertise/Award: FY22

St. Joe, MO Levee Raise North of 36 Hwy Construction (Unrestricted)

- \$10M - \$20M
- Design/Bid/Build
- Anticipated CONSTRUCTION Award: FY22

St. Joe, MO Railroad Gap Construction (Unrestricted)

- \$1M to \$10M
- Design/Bid/Build
- Anticipated CONSTRUCTION Award: FY22/23

Turkey Creek Natural Reach Construction (SB)

- \$1M to \$10M
- Design/Bid/Build
- Anticipated CONSTRUCTION Award: FY23

Blue River Basin-Dodson Construction (SB)

- \$1M to \$10M
- Design/Bid/Build
- Anticipated CONSTRUCTION Award: FY23



SB – Anticipated to be small businesses.



CIVIL WORKS – LEVEES/FLOOD RISK PROJECTS AE SUPPORT

9



- **No plans for AE IDC contracts in FY22**

Manhattan, KS Railroad Gap Construction (Unrestricted)

- \$1 to \$10M
- Design/Bid/Build
- Anticipated CONSTRUCTION Award: FY24
- Railroad Closure project (*Potential AE Support)

Lower MO River Flood Risk Study

- \$3 Mil with potential for spin-off studies (*Potential AE Support)
- Acquisition Strategy: TBD

Upper Turkey Creek (*Potential AE Support in out years)



SB – Anticipated to be solicited to small businesses.



OPERATIONS PROGRAM – CONSTRUCTION



Truman Projects – FY22

- Sewer, Water, Electrical Repairs <\$1M
- Station Drainage/Unwatering Pumps Replacement <\$1M

Tuttle Creek Projects – FY22

- Gate Protective Coating Repairs and Blue Rapids Levee Control Structure <\$500k
- Replace Un-grouted Rip Rap <\$10M

Harlan County Projects - FY22

- Bridge Repair <\$100k
- Spillway Spall Repair <\$2M
- Hydraulic Sluice Gate Repair < \$1M
- Dam Rip Rap Overlay < \$5M

Wilson Lake Projects – FY22

- Relief Well Replacement <\$2M

MO River Bank Stabilization and Navigation Project (BSNP) & MO River Recovery Program (MRRP) Projects – FY22

- Structure Repairs <\$6M





OPERATIONS PROGRAM – SERVICES FY22



Gate and Park Attendants

Janitorial Services

Vegetation Management

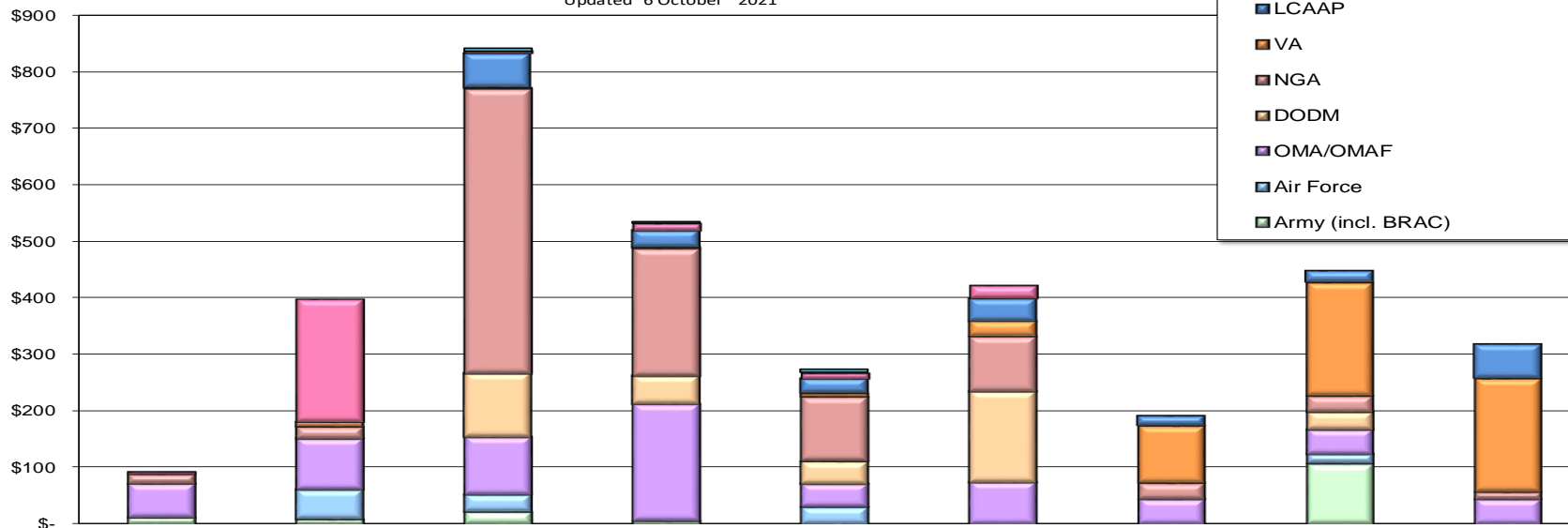
- Mowing
- Tree Trimming and Removal
- Invasive Species and Weed Control
- Boundary Clearing and Maintenance



NWK Military Program Trend Assessment

Updated 6 October 2021

Millions



	FY17	FY18	FY19	FY20	FY21	FY22	FY23	FY24	FY25
Army (incl. BRAC)	\$ 12.35	\$ 9.25	\$ 22.23	\$ 6.76	\$ -	\$ -	\$ -	\$ 105.50	\$ -
Air Force		\$ 51.99	\$ 29.50	\$ -	\$ 31	\$ -	\$ -	\$ 16.70	\$ -
OMA/OMAF	\$ 60.25	\$ 90.35	\$ 102.56	\$ 205.18	\$ 41.20	\$ 74.80	\$ 45.00	\$ 45.00	\$ 45.00
DODM	\$ -	\$ -	\$ 111.58	\$ 50.00	\$ 40.00	\$ 160.00	\$ -	\$ 31.30	\$ -
NGA	\$ 16.40	\$ 21.54	\$ 502.94	\$ 224.53	\$ 113.60	\$ 98.03	\$ 29.37	\$ 28.79	\$ 12.75
VA	\$ -	\$ 8.00	\$ 1.50	\$ 2.86	\$ 5.80	\$ 26.00	\$ 100.00	\$ 200.00	\$ 200.00
LCAAP	\$ -	\$ -	\$ 60.75	\$ 30.10	\$ 25.90	\$ 40.40	\$ 18.10	\$ 21.00	\$ 60.30
Other*	\$ 4.41	\$ 217.46	\$ 5.41	\$ 11.81	\$ 10.11	\$ 24.00	\$ -	\$ -	\$ -
Reachback Design Support	\$ -	\$ -	\$ 5.15	\$ 3.29	\$ 5.49	\$ -	\$ -	\$ -	\$ -
TOTALS	\$ 93.41	\$ 398.59	\$ 841.62	\$ 534.53	\$ 273.28	\$ 423.23	\$ 192.47	\$ 448.29	\$ 318.05

NOTES: Totals based on Construction, Design or both

- ARMY (incl. BRAC) MILCON Construction
- Air Force MILCON Construction
- OMA/OMAF Construction
- DODM Construction
- NGA Design and Construction

- VA Design and Construction
- LCAAP Design and Construction
- Other * AFCS, NORTHCOM, SWT, USDA (NORTHCOM, WAFB MUNS, KANG and any other Design only)
- Reachback Design Support (TAM, POJ, POE AE TO)



AIR FORCE & ARMY MILCON PROGRAM CONSTRUCTION



* No NWK MILCON program for FY22 and FY23

NGA Arnold Facility Access Control Point Upgrade

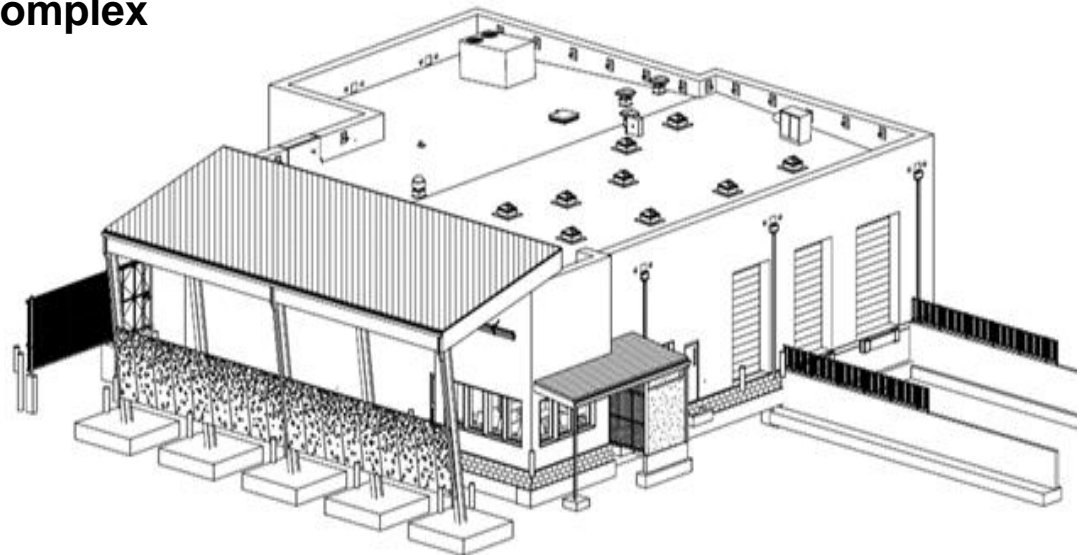
- Design/Build
- \$5M-\$10M
- Anticipated award 4th QTR FY22 (Carryover from FY21)

Ft Riley– FY24 Flight Control Tower

- Design/Bid/Build (Design Complete)
- \$10M-25M
- Advertise 1st QTR FY24

Ft Riley – FY2 Aviation Battalion Complex

- Design/Bid/Build (Design Complete)
- \$50M-\$100M
- Advertise 1st QTR FY24





SRM/INSTALLATION SUPPORT PROGRAM CONSTRUCTION



* AIR FORCE and ARMY SRM decrease for FY22 and possibly beyond

Will Execute with: MATOCs, SATOCs, POCAs, AE's, JOCs

Typical Project Types:

- Historic Building Renovation
- Building Renovation/Repurposing
- Housing Repairs/Maintenance
- Repaving projects
- General infrastructure
- Energy Efficiency



MILITARY IDIQ CONTRACTS

Construction

Small Business DB MATOC (\$49M - \$99M), FY22

SDVOSB DB MATOC (\$49M - \$99M) FY22



AE and Other Services

None planned for FY22





US DEPARTMENT OF AGRICULTURE



Program Scope:

- New USDA Research Lab/ Office (25,000GSF) Facility for the Plant Genetics Research Unit (PGRU) in Columbia, MO.
- Design/Bid/Build
- \$10M-25M
- Advertise Construction 3rd QTR FY22





NEXT NGA WEST (N2W) PROGRAM

Program Scope: Total Program Amount ~ \$1B

- NGA Replacement Facility in North St Louis
- Primary Facility 712,800 sf Secure Analytics

Design-Build Contractor:

McCarthy - HITT



Future Small Business Acquisitions (Design-Bid-Build)

- Access Control Points (ACP), 2 each
- Remote Inspection Facility (RIF)
- Visitor Control Center (VCC) Surface Parking
- Landscaping

ADVERTISE

2Q FY22

2Q FY22

4Q FY22

4Q FY22



FT. LEONARD WOOD HOSPITAL PROGRAM



Program Scope: Total Program Amount ~ \$381M

- Hospital, Outpatient Clinic, Central Utility Plant (CUP), Helipad, Generators, Utilities, Roads

Design-Build Contractor:
JE Dunn



Future Small Business Acquisition:

- Demo existing Hospital & Clinic
- Optical Fabrication Lab (Existing Med Warehouse)
- Site Improvements West of Illinois Ave.

ADVERTISE

2Q FY25

2Q FY25

4Q FY26

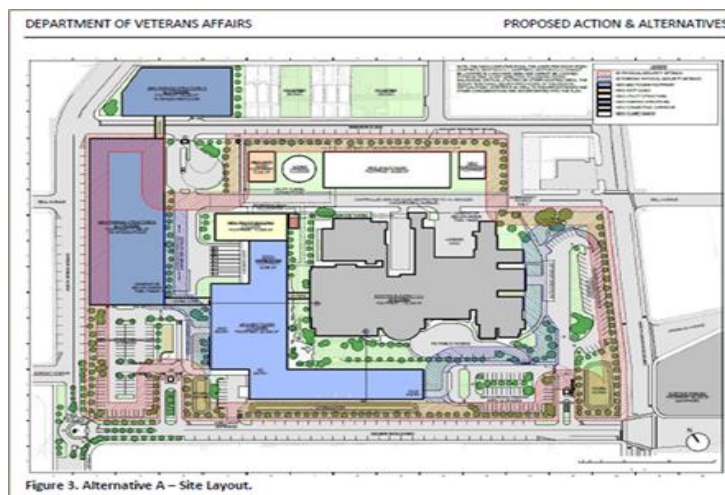


DVA – St Louis John Cochran Division



Program Scope: Total Program Amount ~ \$850 M

- Relocate in-patient functions from existing building to new tower/facilities.
- Additional facilities: Engineering-Warehouse-Admin, Energy Plant, Water Tower, Substance Abuse Clinic & Parking Garage(s). Demo of underutilized buildings.



Phase 1 Test Fit –
Project Book

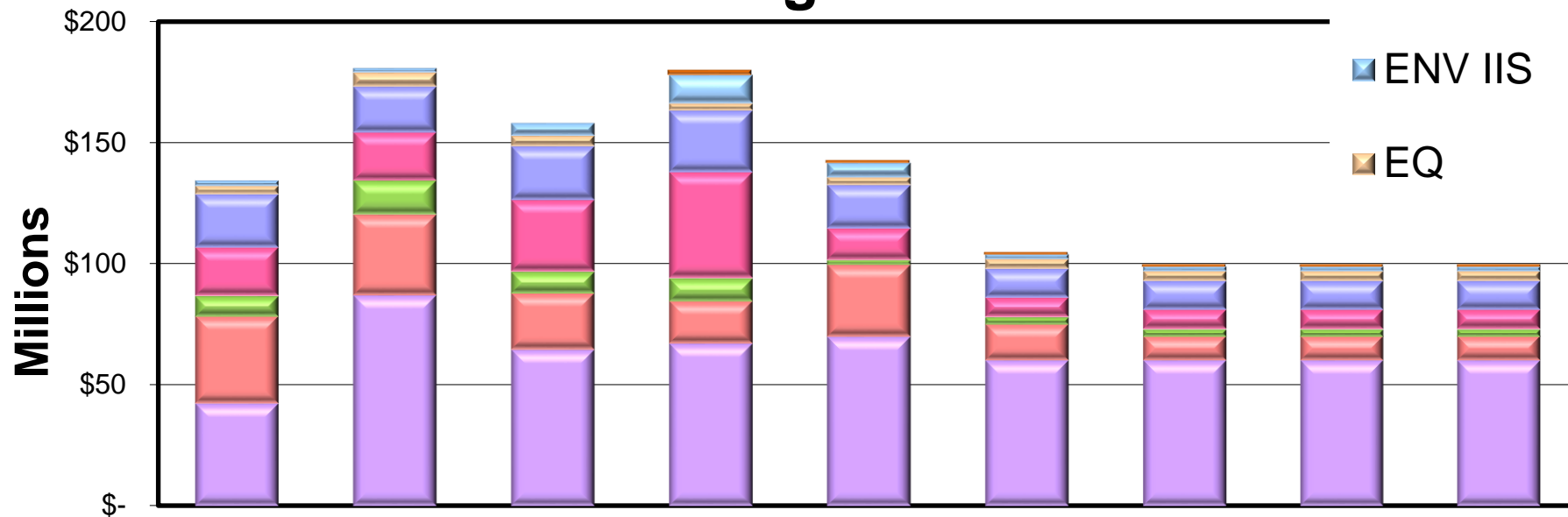
Schedule:

- | | |
|--------------------------------------|-------------------|
| • Programing Complete (Project Book) | FY20Q1 (Complete) |
| • USACE Award AE Design Contract | FY20Q1 (Awarded) |
| • DVA Award AE Concept Task Order | FY21Q3 (Awarded) |
| • 35% Design Complete | FY22Q4 |

Acquisition Strategy, Small Business Set Aside work and Construction Phasing:

- Acquisition Strategy under development and considering Industry Feedback

NWK HTRW Program Trend Assess



	FY18	FY19	FY20	FY21	FY22	FY23	FY24	FY25	FY26
AF IRP				2.14	\$ 1.10	\$ 1.00	\$ 1.00	\$ 1.00	\$ 1.00
ENV IIS	\$ 2.20	\$ 1.82	\$ 5.21	\$ 11.60	\$ 6.00	\$ 2.00	\$ 2.00	\$ 2.00	\$ 2.00
EQ	\$ 3.49	\$ 5.75	\$ 4.27	\$ 3.00	\$ 3.20	\$ 4.00	\$ 4.00	\$ 4.00	\$ 4.00
FUDS	\$ 22.04	\$ 18.99	\$ 22.27	\$ 25.42	\$ 17.94	\$ 12.00	\$ 12.00	\$ 12.00	\$ 12.00
IRP	\$ 19.97	\$ 19.96	\$ 29.55	\$ 43.64	\$ 13.05	\$ 8.00	\$ 8.00	\$ 8.00	\$ 8.00
BRAC	\$ 8.47	\$ 13.97	\$ 8.93	\$ 9.56	\$ 1.97	\$ 3.00	\$ 3.00	\$ 3.00	\$ 3.00
FUSRAP	\$ 36.00	\$ 33.44	\$ 23.36	\$ 17.65	\$ 29.80	\$ 15.00	\$ 10.00	\$ 10.00	\$ 10.00
SUPERFUND	\$ 42.21	\$ 86.67	\$ 64.40	\$ 66.86	\$ 69.70	\$ 60.00	\$ 60.00	\$ 60.00	\$ 60.00
TOTAL	\$ 134.38	\$ 180.60	\$ 157.99	\$ 179.87	\$ 142.76	\$ 105.00	\$ 100.00	\$ 100.00	\$ 100.00



ENVIRONMENTAL PROGRAM ONGOING IDIQ ACQUISITIONS C

NWD MEGA SB Preplaced Remedial Action Contract (PRAC) MATOC (NAICS 562910)

- \$176.25M value
- Anticipated Award: October 2021

NWD MEGA SDVOSB Preplaced Remedial Action Contract (PRAC) MATOC (NAICS 562910)

- \$22.5M value
- Target of 5 firms. In source selection
- Anticipated Award: 2nd Quarter FY22

NWD MEGA SB Environmental Remediation Services MATOC (NAICS 562910)

- \$60M value
- Target of 5 firms. In source selection
- Anticipated Award: 2nd Quarter FY22





ENVIRONMENTAL PROGRAM PLANNED IDIQ CONTRACTS FY22

NWD Regional A-E Services 8a Small Business (NAICS 541330)

- \$9.9M
- Advertise 2Q FY22

PFAS Transportation and Disposal Blanket Purchase Agreement

- Estimated at \$40M
- Market Research Planned for 1Q FY22
- Funding not yet received to start process

Sunflower Army Ammunition Plant (DeSoto, KS) SATOC for Corrective Measures Implementation (NAICS 562910)

- \$25M
- Advertisement 2Q FY22
- Small Business set-aside
- In initial planning stages
- All HTRW, not military munitions





INFRASTRUCTURE BILL

- Situation is still not clear.



- We are posturing for potential work.





CONTRACT OPPORTUNITIES ENGAGING WITH NWK



- Participate in Sources Sought to provide industry information to the Kansas City District.
- Participate in SAME, ACEC or AGC or other industry regular events to get up to date information on Kansas City District Contracts.
- Check SAM.GOV. All USACE work is published here.



CONTRACT OPPORTUNITIES ENGAGING WITH NWK

- NWK is conducting periodic conference calls with firms interested in status of planned AE acquisitions, service and construction contracts:

HTRW/Environmental Program:

29 OCT 2021

Contact to be added to email distribution list for future calls.

jill.k.fraley@usace.army.mil | jason.m.leibbert@usace.army.mil

Military Program

15 DEC 2021

<https://usace1.webex.com/meet/timothy.j.kurgan>

Call-in toll-free number (ATT Audio Conference) 1-844-800-2712 (US/Canada)

Call-in number (ATT Audio Conference) 1-669-234-1177 (US/Canada)

Access Code: 199 682 9922

Civil Works Program/Planning Studies Lake and River Operations Projects

15 DEC 2021

Contact to be added to email distribution list for future calls

melissa.r.Corkill@usace.army.mil



CONTRACT OPPORTUNITIES SECRETS TO SUCCESS



- Read criteria carefully.
We evaluate strictly on published criteria. Nothing more, nothing less.
- Criteria listed in priority order or stated as weighted equally.
Generally, we want for firms that have recent/positive experience on similar projects.
- If something in the solicitation or synopsis is unclear, submit and RFI.
- Limit “fluff” in proposals. Don’t waste too much space on company philosophy if it is not part of criteria. We only evaluate on the published criteria.
- Check for typos, but generally there is no criteria for punctuation and spelling, but make sure proposal is clear.
- Identify what you will do for the particular project/contract advertised.



CONTRACT OPPORTUNITIES SECRETS TO SUCCESS – AE PROPOSALS



Specialized Experience

- Looking for similar projects (scope)
- Be clear on role of firm for projects submitted
- Checklists are ok, but we generally rely on descriptions

Professional qualifications

- Looking for people with similar experience on similar projects
- Be clear on credentials/certifications
- Be clear on role of person (what did they did and will do on the project)

Past Performance (Performance Confidence)

- Looking for Good performance on relevant projects
- Submit DUNS numbers

Capacity

- Looking for capability of identified staff

Knowledge of Locality

- Looking for experience in local area (climate, structural criteria, construction costs)



CONTRACT OPPORTUNITIES CONTRACTOR PERFORMANCE



QUALITY

- NWK utilizes the Dr Checks for project reviews. Track and close all comments.
- Know the government criteria - (Unified Facilities Criteria (UFCs) and specifications - Unified Facility Guide Specifications (UFGS).
- Specifications should be tailored to the project scope with all brackets removed.
- NWK will perform Quality Assurance – check to see firm followed their QC Plan.

CPARS

- CPARS are used to review firm past performance.
- Provide DUNS numbers in proposals.
- If a firm gets a negative evaluation, provide a response to tell your side.



KANSAS CITY DISTRICT



COL Travis J. Rayfield
District Engineer



MAJ John Chambers
Deputy District Engineer



Bryan Smith
Deputy for Project Management



Arthur Saulsberry
Deputy for Small Business
816-389-3927



KANSAS CITY DISTRICT PROJECT MANAGEMENT



Melissa Corkill

Chief Civil Works Branch
816-389-3697



Jill Fraley

Chief Environmental Branch
816-389-3798



Tim Kurgan

Chief Military Branch
816-389-2336



Jennifer Switzer

Chief Planning Branch
816-389-3062



Pete Hentschel

Operations Tech Support Branch
816-389-3641



KANSAS CITY DISTRICT CONTRACTING DIVISION



Gwendolyn Miller
Chief of Contracting
816-389-3665



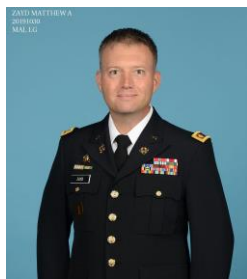
Brad Wright
Deputy/BOB Chief
816-389-3936



David Walsh
Chief Mega Contracts
816-389-3352



Lacy Kay
Chief HTRW Contracts
816-389-3509



Maj Matthew Zayd
Chief Military Contracts
816-389-3802



Matt Wilson
Chief Civil Contracts
816-389-3426



DOING BUSINESS WITH THE KANSAS CITY DISTRICT CORPS OF ENGINEERS



1. NORTHWESTERN DIVISION CORPS OF ENGINEERS WWW.NWD.USACE.ARMY.MIL
2. KANSAS CITY DISTRICT, CORPS OF ENGINEERS WWW.NWK.USACE.ARMY.MIL
3. NAICS ASSOCIATION WWW.NAICS.COM
4. OFFICIAL U.S. GOVERNMENT SYSTEM FOR CONTRACT OPPORTUNITIES WWW.SAM.GOV
5. SMALL BUSINESS ADMINISTRATION WWW.SBA.GOV/FEDERAL-CONTRACTING
6. DOING BUSINESS WITH USACE [HTTPS://WWW.USACE.ARMY.MIL/BUSINESS-WITH-US/CONTRACTING](https://WWW.USACE.ARMY.MIL/BUSINESS-WITH-US/CONTRACTING)



QUESTIONS?





ACRONYMS



GI	General Investigations	ECIP	Energy Conservation Investment program
CG	Construction General	ERCIP	Energy Resilience and Conservation Investment Program
CAP	Continuing Authorities Program	HTRW	Hazardous Toxic Radiologic Waste
O&M	Operations and Maintenance	IIS	Interagency and International Services
FCCE	Flood Control and Coastal Emergencies	EQ	Environmental Quality
MRLS	Missouri River Levee System	FUDS	Formerly Used Defense Sites
MRRP	Missouri River Recovery Program	IRP	Installation Restoration Program
RMC	Risk Management Center	BRAC	Base Realignment and Closure
GUMP	Guidance Update Management Program	FUSRAP	Formerly Used Sites Remedial Action Program
BSNP	Bank Stabilization Navigation Program	EPA	Environmental Protection Agency
DODM	Department of Defense Medical	MEGA	Multiple Environmental Government Acquisition
NGA	National Geospatial-Intelligence Agency	PRAC	Preplace Remedial Action Contract
N2W	Next NGA West	IDIQ	Indefinite Delivery Indefinite Quantity
OMA	Operations and Maintenance Army	MATOC	Multiple Award Task Order Contract
OMAF	Operations and Maintenance Air Force	SATOC	Single Award Task Order Contract
MILCON	Military Construction	POCA	Performance Oriented Construction Activities Contract
FCA	Facility Condition Assessment	JOC	Job Order Contract
SRM	Sustainment Restoration and Maintenance	AFCS	Air Force Civilian Services
PA	Program Amount	IPO	Integrated Project Office
WAFB	Whiteman Air Force Base	ACP	Access Control Point
LWD	Fort Leonard Wood	RIF	Remote Inspection Facility
MAFB	McConnell Air Force Base	VCC	Visitor Control Center
KANG	Kansas Army National Guard		
SBSA	Small Business Set-Aside		
DBB	Design Bid Build		
UMMCA	Unspecified Minor Military Construction		
AE	Architect Engineer		
AFCEC	Air Force Civil Engineer Center		
NAICS	North American Industry Classification System		
SDVOSB	Service Disabled Veteran Owned Small Business		