

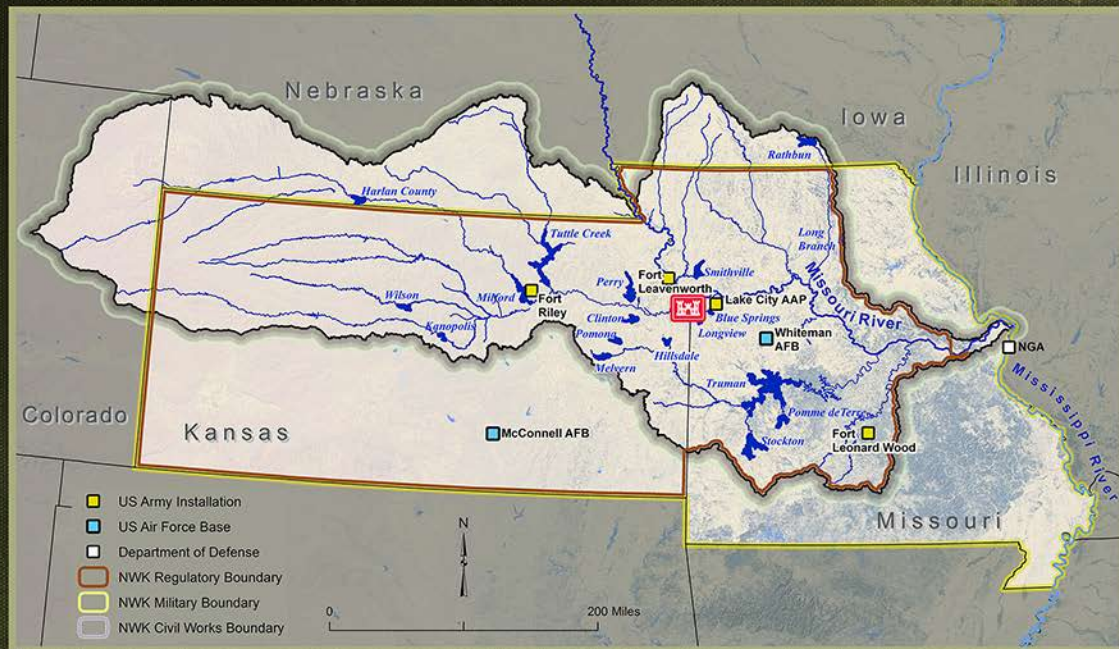
THE HEARTLAND ENGINEERS



U.S. ARMY



US Army Corps of Engineers
Kansas City District



The **Kansas City District** delivers world class programs and projects to the heartland region and the nation to support national security, strengthen our economy, and reduce environmental and disaster risk.

Fast Facts: 1000, dedicated civil servants; manage 500 miles of the Missouri River; 18 dams and reservoirs; two hydropower plants; 3000, + regulatory permits per year.



Recreation



Operations



Emergency Management



Civil Works



Military Construction



Environmental Program

KANSAS CITY DISTRICT - VALUE TO THE NATION

OCTOBER 2023



MO RIVER NAVIGATION

- **498** MILES OF NAVIGABLE WATERWAY TRANSPORTS COMMODITIES, I.E., GRAIN AND AGGREGATE, THROUGH THE HEARTLAND
- STABLE, RELIABLE CHANNEL COMPOSED OF RIVER TRAINING STRUCTURES THAT PROMOTES SELF-SCOURING.
- MISSOURI RIVER AND MISSISSIPPI RIVER FORM TWO PRIMARY NAVIGABLE MARINE HIGHWAY ROUTES AS DESIGNATED BY USDOT.
- WATERWAY TRANSPORTATION RESULTED IN ENVIRONMENTAL AND ECONOMIC BENEFITS.
- **225+** SURVEYS CONDUCTED ASSISTING NAVIGATORS AND ENGINEERS.
- FROM 2010 TO 2020 - TRAFFIC INCREASED **2.6X** FROM FIRST **5** YEARS TO LAST **5** YEARS
- **2.54** MILLION TONS OF ROCK PLACED ON **473** STRUCTURES SINCE THE 2019 FLOOD.

KANSAS CITYS LEVEES

- COMPLETED **40%** OF **\$270M** IN LEVEE IMPROVEMENTS AND RAISES ALONG ARGENTINE, ARMOURDALE AND CID.
- COMPLETED **\$2M** OF IMPROVEMENTS TO **3** PUMP STATIONS ALONG CID.
- COMPLETED IMPROVEMENTS ON **5** OF **7** STATIONS ALONG ARMOURDALE.
- COMPLETED **\$35M** OF PUMP STATION REPLACEMENTS ALONG ARGENTINE.

NEXT NGA WEST CAMPUS

- SECURE FACILITY FOR OVER **3K** DOD EMPLOYEES SUPPORTING NATIONAL SECURITY.
- SIGNIFICANT PROGRESS ON INTERIOR CONSTRUCTION WITH FURNITURE INSTALL UNDERWAY IN FINISHED AREAS.
- STARTUP AND TESTING OF ELECTRICAL AND MECHANICAL SYSTEMS ARE UNDERWAY.
- FOLLOW ON CONTRACTORS TO BEGIN SECURITY AND IT EQUIPMENT INSTALL OVER THE NEXT YEAR.
- **128** SMALL BUSINESS SUBCONTRACTS VALUED AT OVER **\$205M**.

FORT LEONARD WOOD HOSPITAL REPLACEMENT

- REPLACES MEDICAL FACILITIES CONSTRUCTED **50+** YEARS AGO.
- BROKE GROUND OCT 2019, ANTICIPATED TO RECEIVE PATIENTS IN 2025.
- **44** INPATIENT-BEDS **235.4K** SQ. FT., PRIMARY CARE CLINIC **193.3K** SQ. FT.
- PROJECTED TO SERVE **5,700** ACTIVE DUTY & **20,400** TRAINEES, FAMILIES AND RETIREES.
- TOTAL COST = **\$315.3M**



U.S. ARMY



US Army Corps
of Engineers



RECREATION AND ENVIRONMENTAL STEWARDSHIP

ALLOWED **APPROXIMATELY 15.7M VISITORS** OUTDOOR EXPERIENCES

- ALLOWED APPROXIMATELY **15.7M** VISITOR OUTDOOR EXPERIENCES.
- **198K** ACRES OF WATER
- **413K** ACRES OF LAND
- **\$1.46M** IN AGRICULTURAL LEASE RENT FOR FY23.
- NEARLY **6,000** ACRES OF LAND IMPROVED OR ENHANCED FOR POLLINATORS.
- OVER **\$4.2M** IN TOTAL REVENUE COLLECTED FROM RECREATION AREAS.



HYDROPOWER

HARRY S TRUMAN & STOCKTON

- TOTAL GENERATION **100,940,000KWH**
- POTENTIAL TO POWER **~7.6K** HOMES
- CUMULATIVE FLOOD DAMAGES PREVENTED: **\$1.8B** TRUMAN, **\$428M** STOCKTON.

THE AVERAGE MISSOURI HOME CONSUMES MONTHLY **1103KWH** BASED ON DATA FROM 2021 EIA SCHEDULES. ANNUALLY THIS WOULD BE **13,236KWH**. POTENTIALLY POWERING UP TO **7,626** HOMES. THE AVERAGE PRICE OF ELECTRIC IN 2022 ACCORDING TO SAME EIA SCHEDULE FOR MISSOURI IS **12.29 (CENTS/KWH)**. THIS EQUATES TO **\$12,405,562**.

DELIVERING ON OUR COMMITMENTS

FOUNDED IN **1907**, DELIVERING WORLD-CLASS QUALITY PROGRAMS FOR **116** YEARS & COUNTING. THE **KANSAS CITY DISTRICT** EMPOWERS OVER **1,000** HIGHLY TALENTED PROFESSIONALS **100%** COMMITTED TO THE MISSION.

- SMALL BUSINESS OBLIGATIONS, **\$319,170,256**
- SMALL BUSINESS CONTRACTS = **814**
- SMALL BUSINESS IS 53% OF **\$624.9M** TOTAL OBLIGATIONS.
- SMALL BUSINESS IS 61% OF **1,344** TOTAL CONTRACTS.

