





# ARLINGTON NATIONAL CEMETERY SOUTHERN EXPANSION PROJECT

SAME Great Kansas City Industry Day Presentation



UNITED STATES ARMY CORPS OF ENGINEERS – NORFOLK DISTRICT



JUNE 2024



# LEARNING OBJECTIVES

1. Establishing a vision to drive your programs.
2. Keys to fostering open communication amongst stakeholders.
3. Building consensus by identifying what is important.
4. Strategies for tackling inflation during projects.

# TOPICS

1. History
2. Cemetery Operations
3. Leadership's Vision
4. Stakeholder collaboration
5. Change: Tackling inflation
6. Conclusion











T. Anderson del.

T. Moore's Lithography Boston

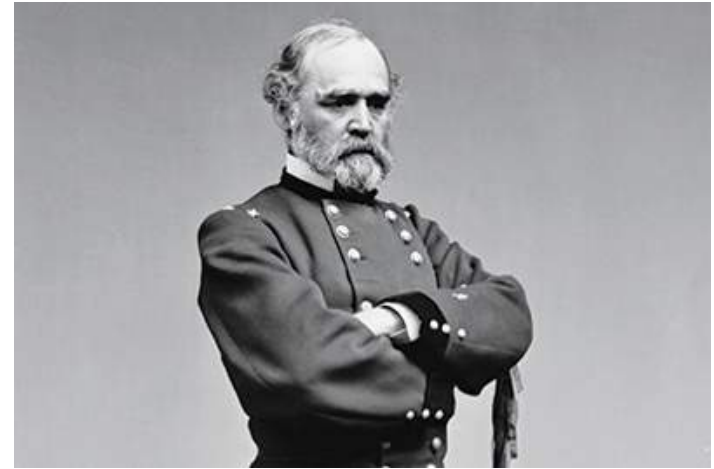
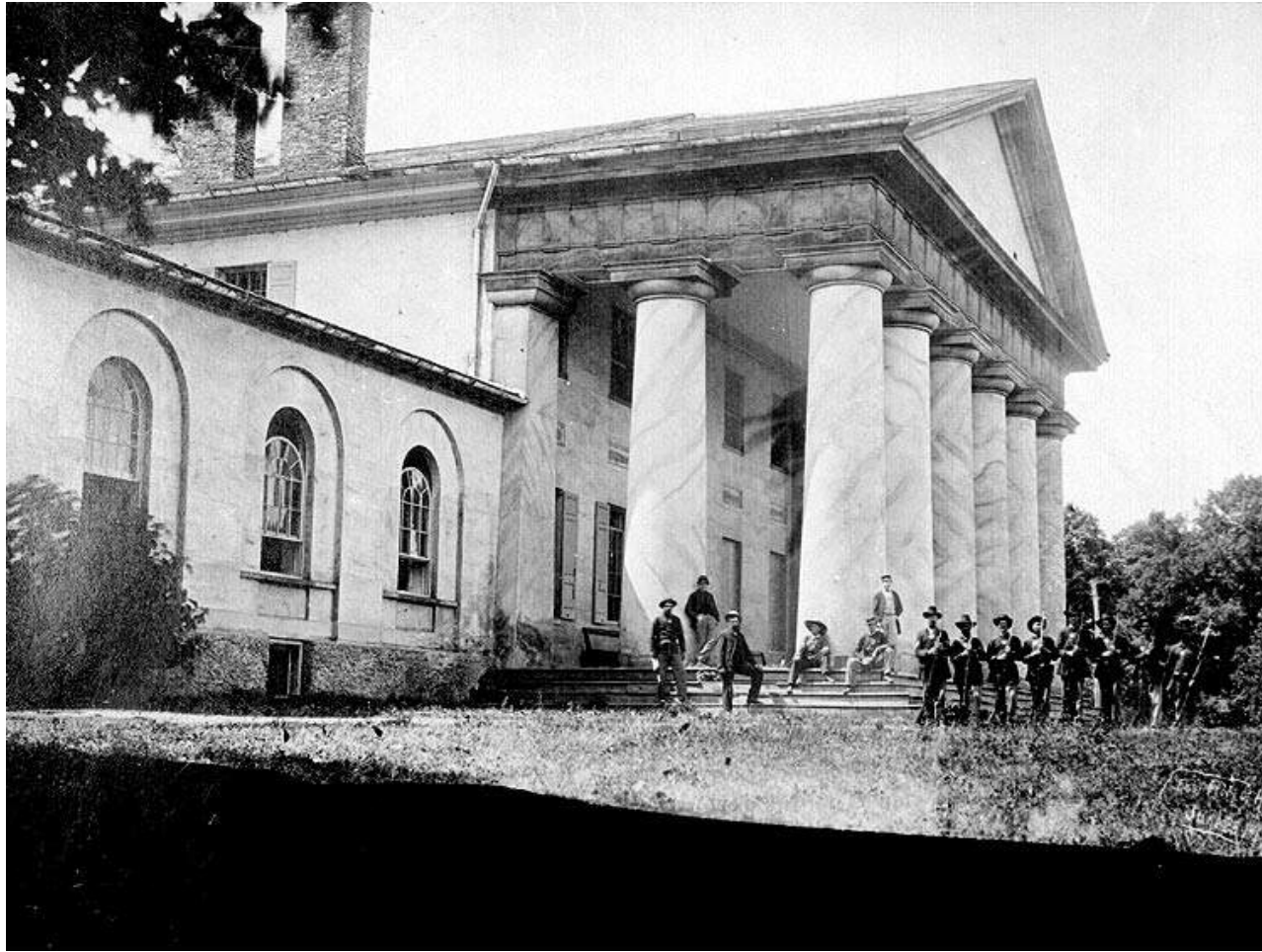
VIEW OF THE CITY OF WASHINGTON.  
 THE METROPOLIS OF THE UNITED STATES OF AMERICA.  
 TAKEN FROM ARLINGTON HOUSE, THE RESIDENCE OF GEORGE WASHINGTON P. CUSTIS ESQ.



*Engraved according to Act of Congress, in the year 1800, by T. Anderson, in the Office of the District Court of Maryland.*

1800

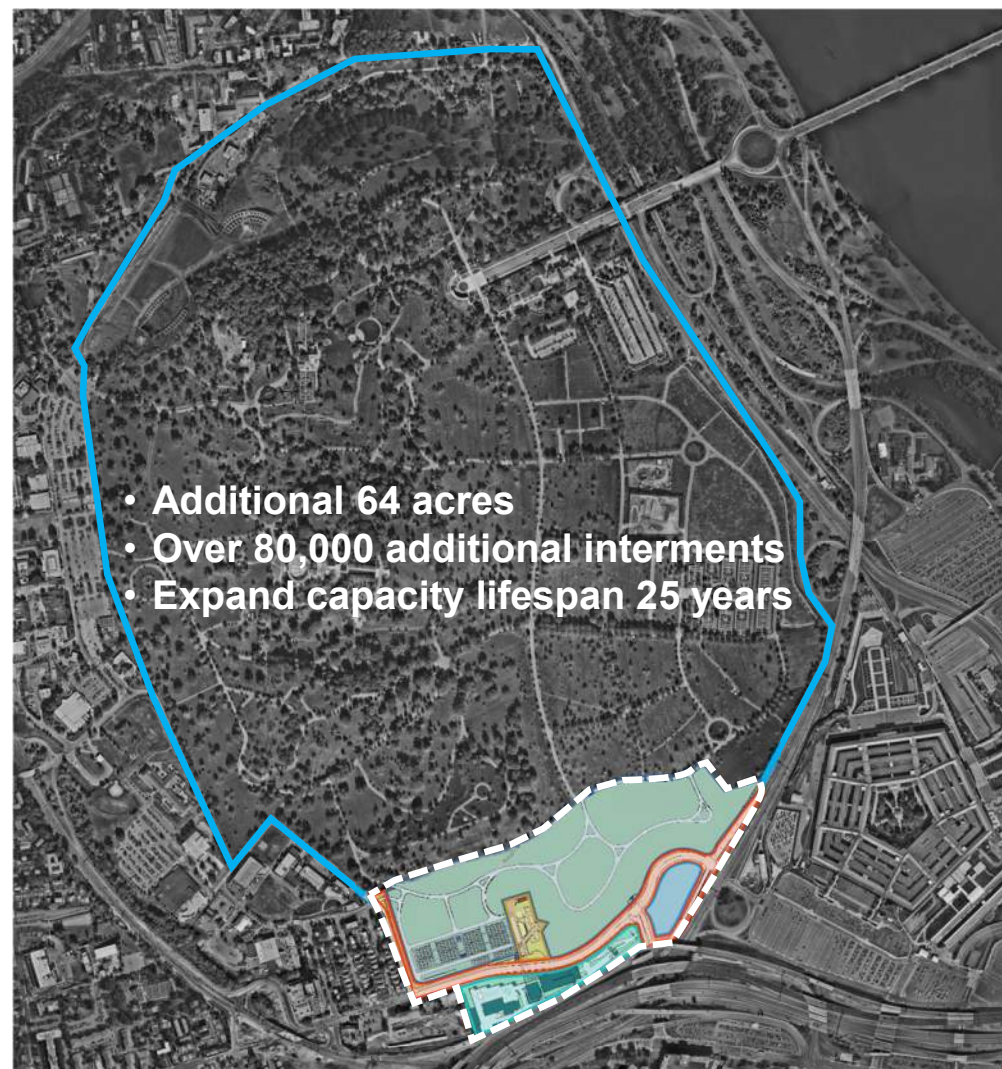






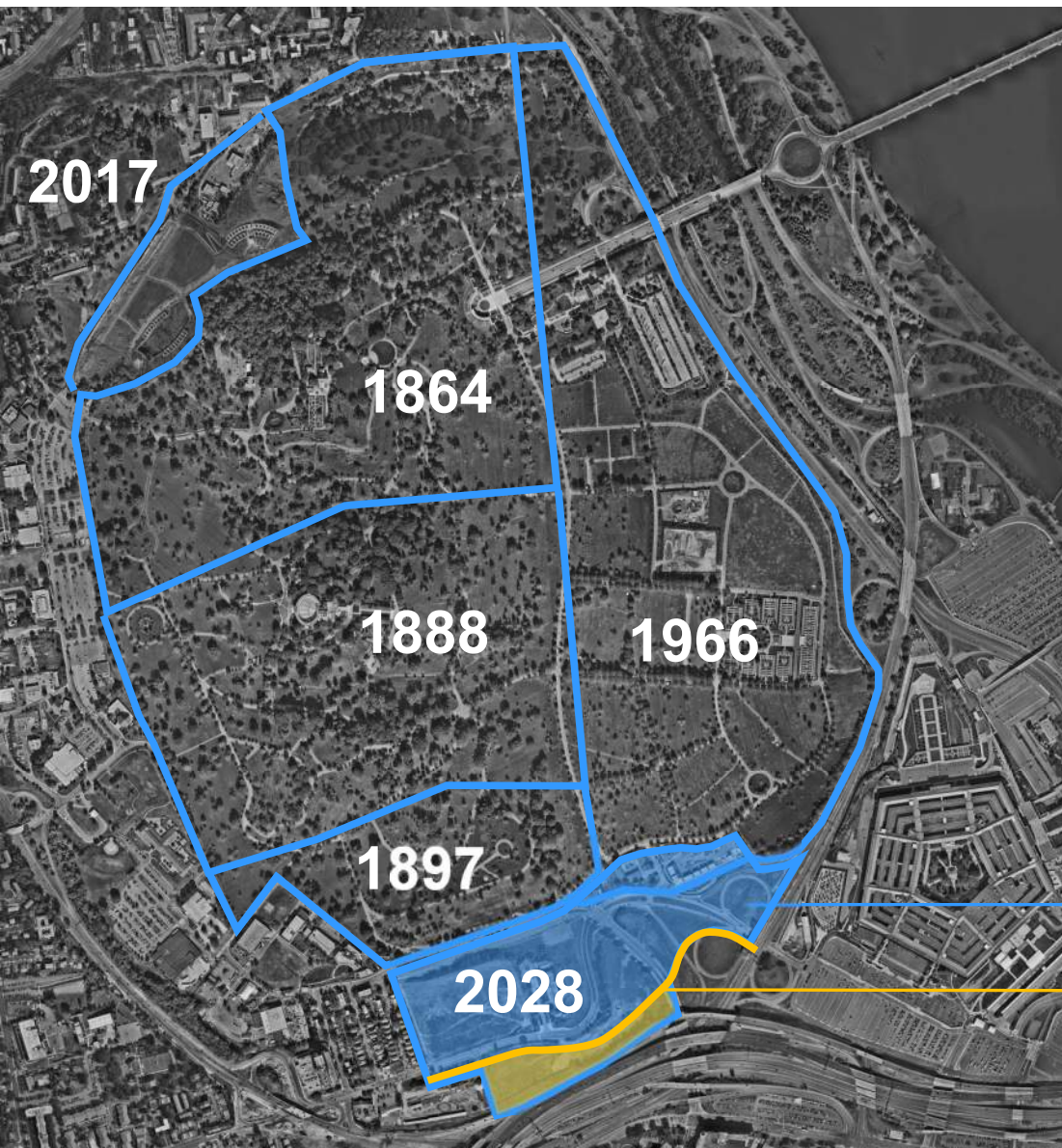


**EXISTING**



**PROPOSED**





## The Nation's most hallowed grounds

*Leadership's guidance for the Southern Expansion*

- ***The family gravesite experience is of paramount importance.***
- *Cemeteries are for the living.*
- *Maximize contiguous land for interment.*
- *The expansion needs to be seamless.*
- *Carefully balance Character, Function, and Use.*

SOUTHERN EXPANSION PROJECT

INTERMENT AREA CONTIGUOUS  
WITH THE EXISTING CEMETERY

DEFENSE ACCESS ROAD PROJECT  
RELOCATION OF COLUMBIA PIKE

CEMETERY SUPPORT – SOUTH PARCEL

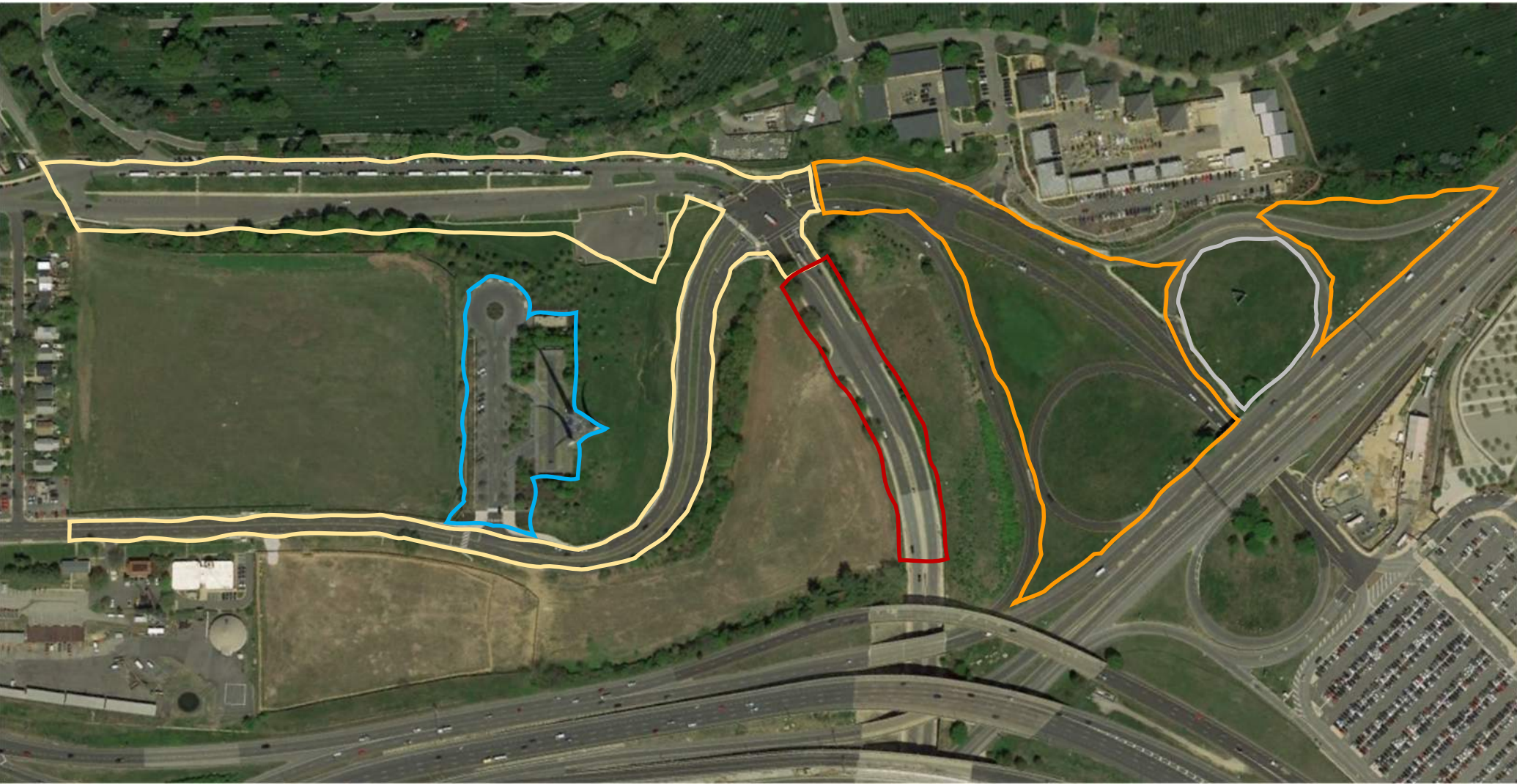


## **F A C I L I T A T O R S**

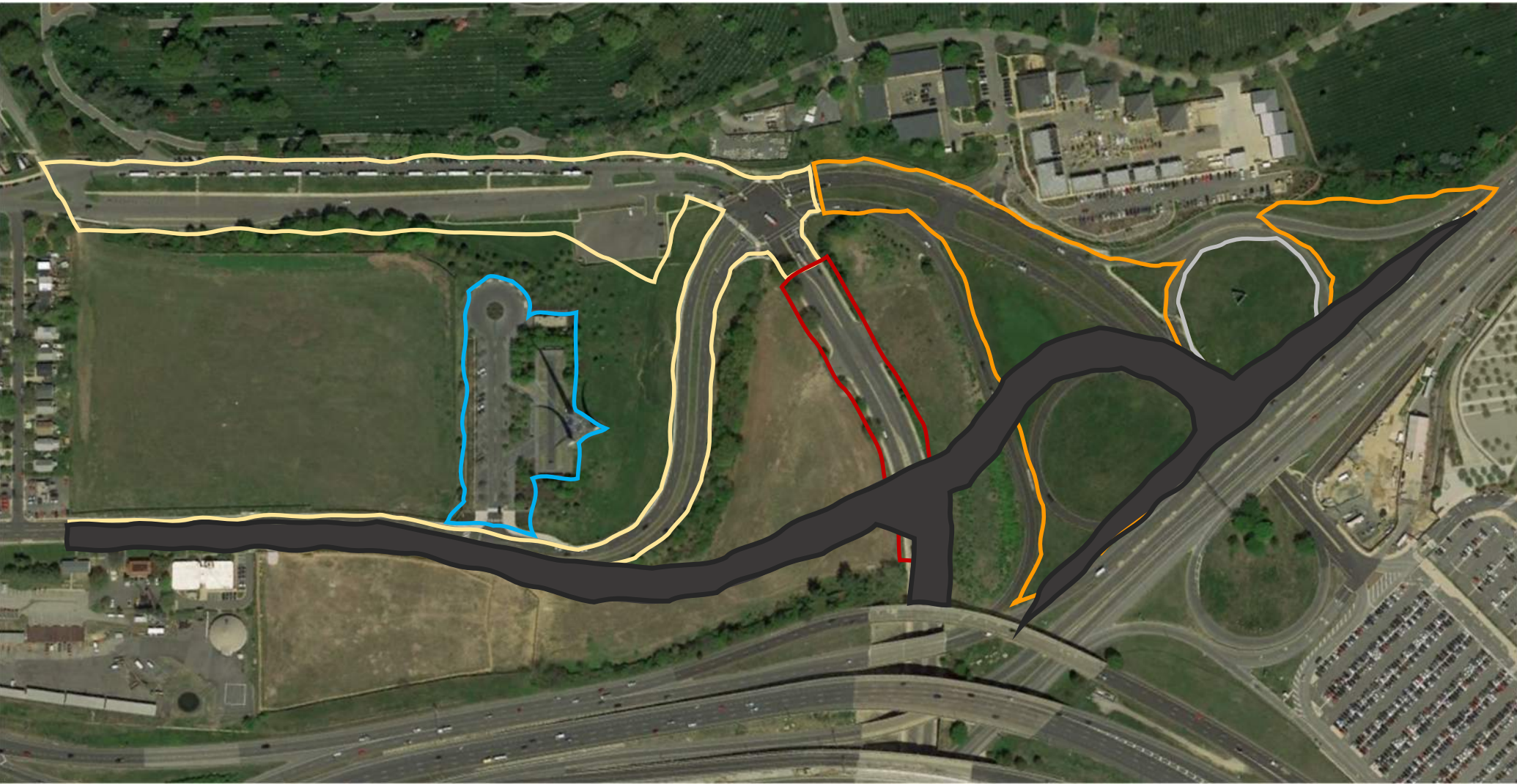
1. Arlington National Cemetery
2. USACE Norfolk District
3. Design Team

## **S T A K E H O L D E R S**

1. **Air Force District of Washington**
2. **Arlington County**
3. **Pentagon Memorial Fund**
4. **Virginia Department of Transportation**
5. Foxcroft Heights Neighborhood
6. Joint Base Myer Henderson Hall
7. Pentagon Reservation (Washington Headquarters Services)
8. National Capital Planning Commission
9. Commission of Fine Arts
10. Virginia State Historic Preservation Office















COLUMBIA PIKE EXISTING - LOOKING WEST





COLUMBIA PIKE – SHARED-USE PATH LOOKING WEST





COLUMBIA PIKE EXISTING – LOOKING EAST





COLUMBIA PIKE – LOOKING EAST





**Arlington National Cemetery  
Wall Trail**

COLUMBIA PIKE – LOOKING EAST



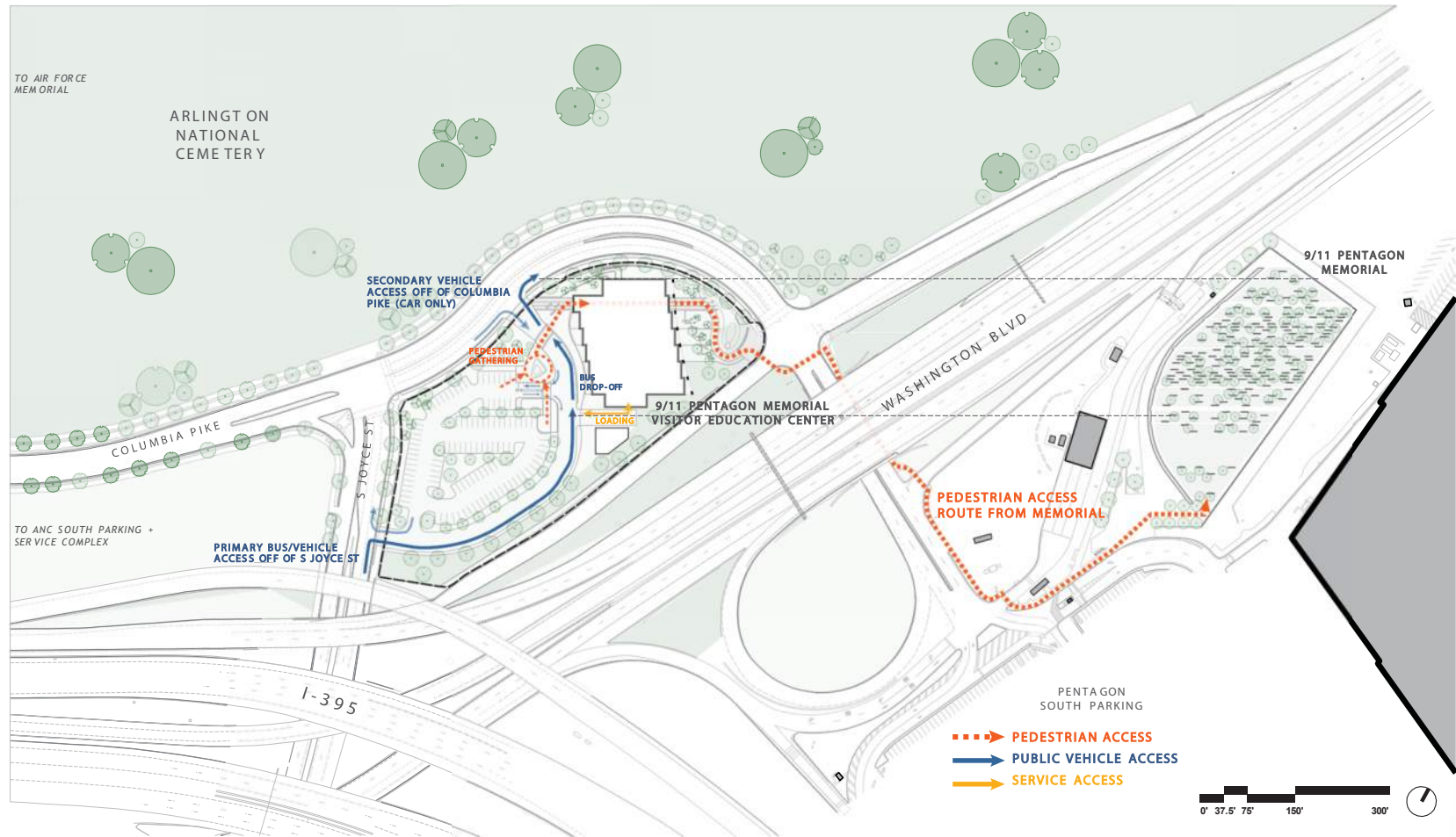


9/11 PENTAGON MEMORIAL  
VISITOR EDUCATION CENTER

**SITE MAP**  
SITE CONTEXT

PENTAGON MEMORIAL FUND  
**FENTRESS ARCHITECTS**





9/11 PENTAGON MEMORIAL  
VISITOR EDUCATION CENTER

**SITE MAP**  
DESIGN CONCEPT - SITE CIRCULATION

PENTAGON MEMORIAL FUND  
**FENTRESS ARCHITECTS**



9/11 PENTAGON MEMORIAL  
VISITOR EDUCATION CENTER  
September 7, 2023

PERSPECTIVE: NORTH FACADE from COLUMBIA PIKE  
DESIGN CONCEPT

PENTAGON MEMORIAL FUND  
**FENTRESS ARCHITECTS**  
CONFLUENCE





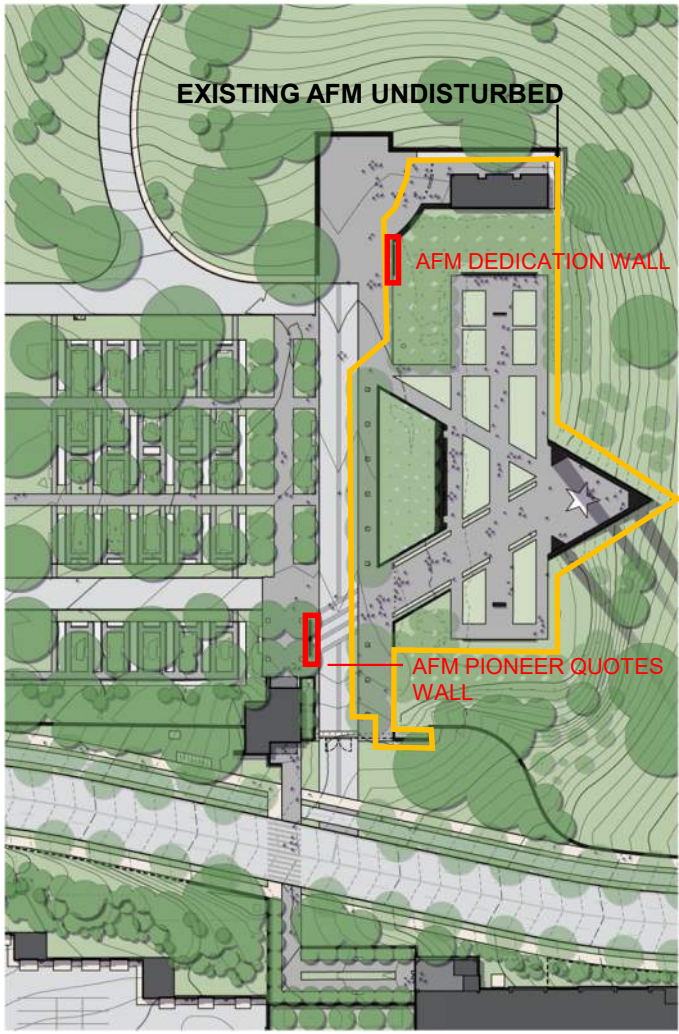




**15% DESIGN PHASE**



**35% DESIGN PHASE**



**65% DESIGN PHASE**

**AIR FORCE MEMORIAL – DESIGN REFINEMENT**





















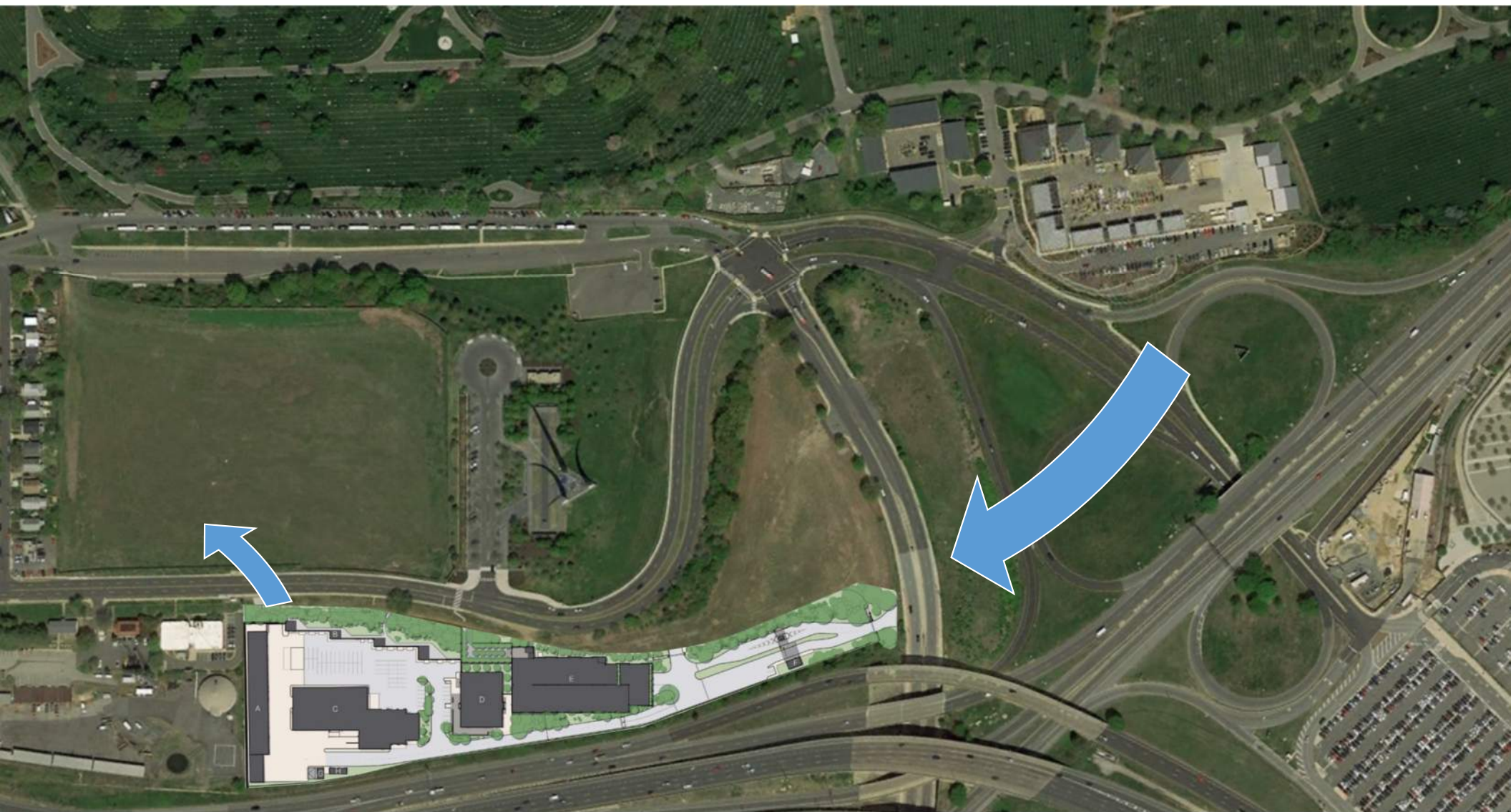
















**GRADING DESIGN**



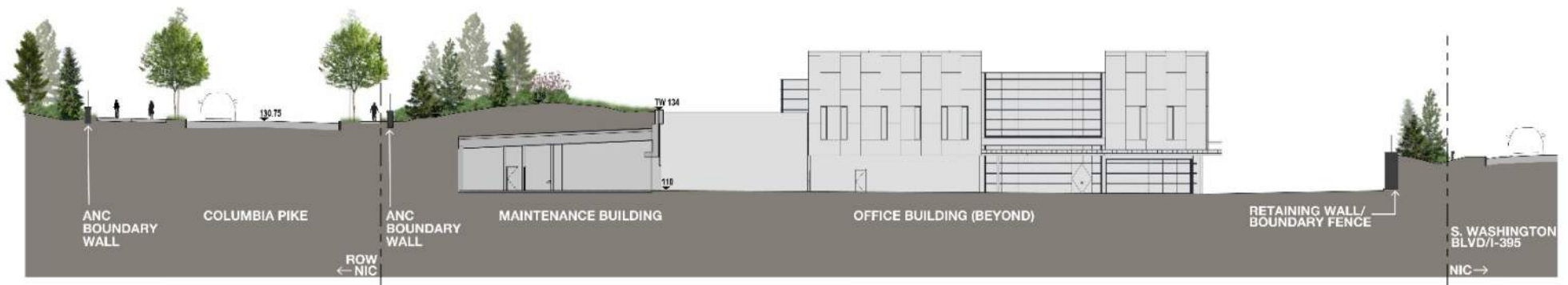
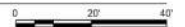






C1 SECTION AT COLUMBIA PIKE PEDESTRIAN ACCESS POINT TO OFFICE BUILDING D

SCALE: 1"=20'



A1 SECTION AT OPERATIONS COMPLEX

SCALE: 1"=20'



SECTIONS





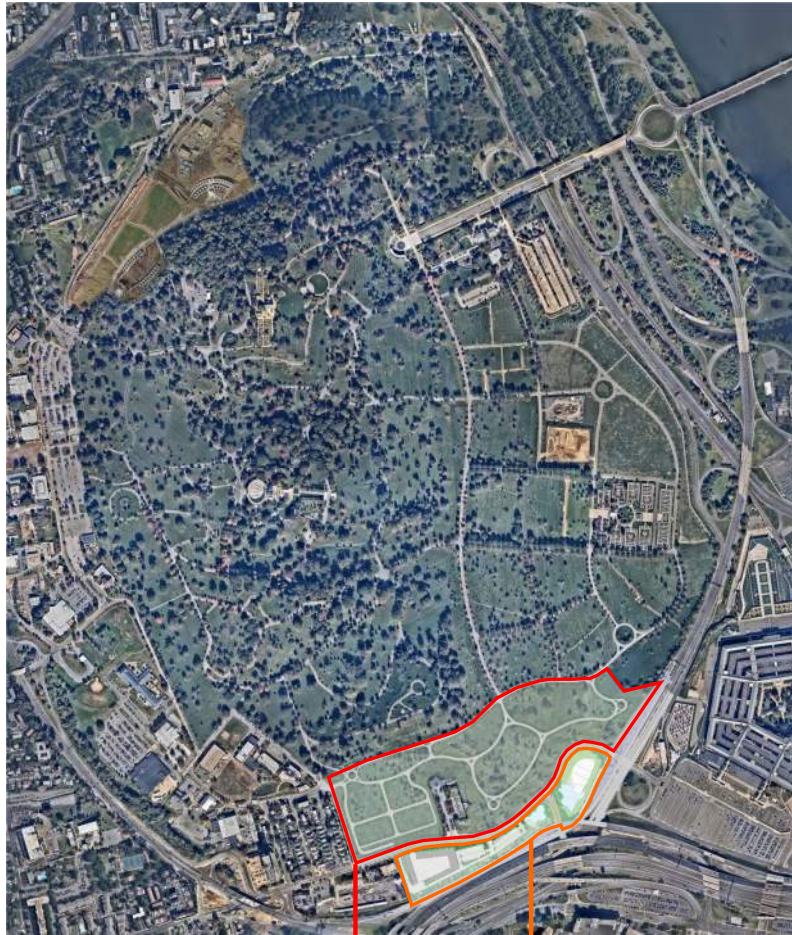












SOUTHERN  
EXPANSION  
PROJECT

SOUTH OF  
COLUMBIA PIKE

## THE DESIGN PHILOSOPHY

HOLISTIC | INTERRELATED | COORDINATED

A BALANCE OF...



CHARACTER

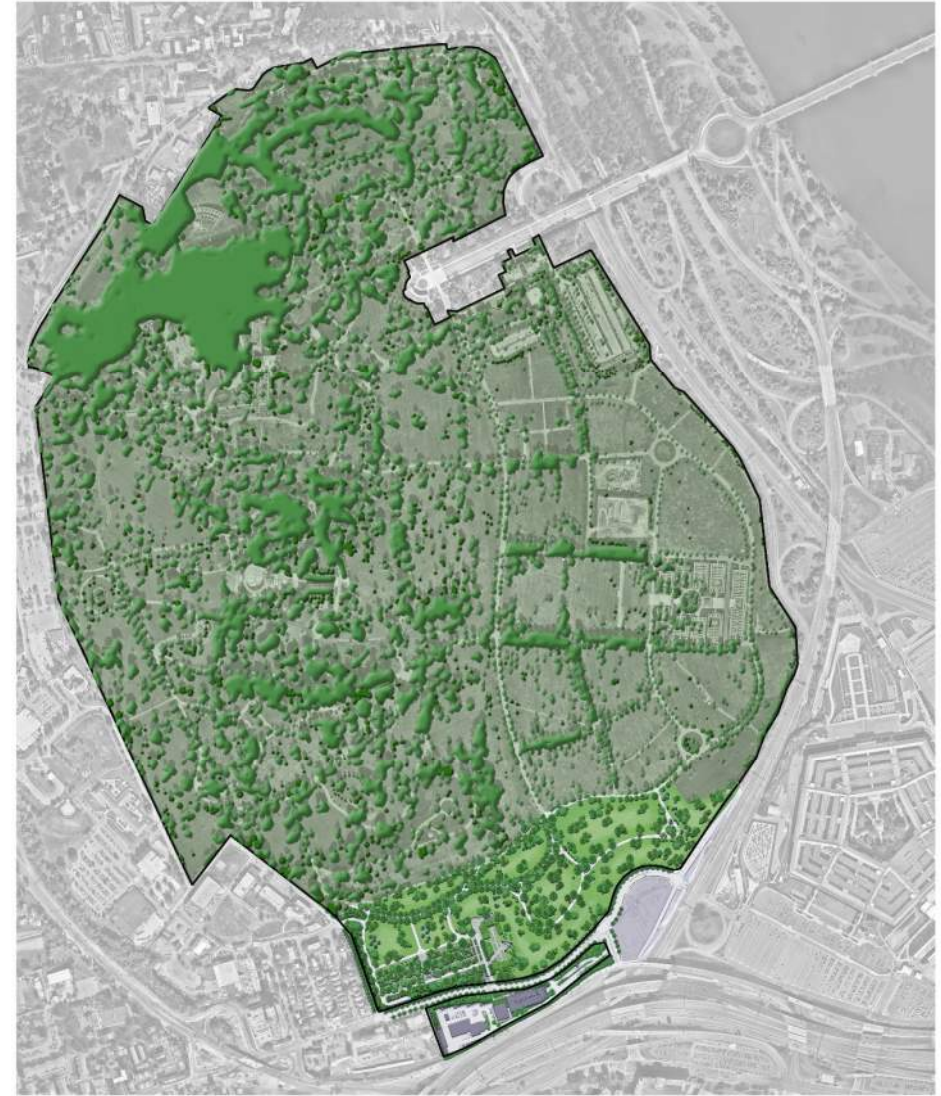


FUNCTION



USE





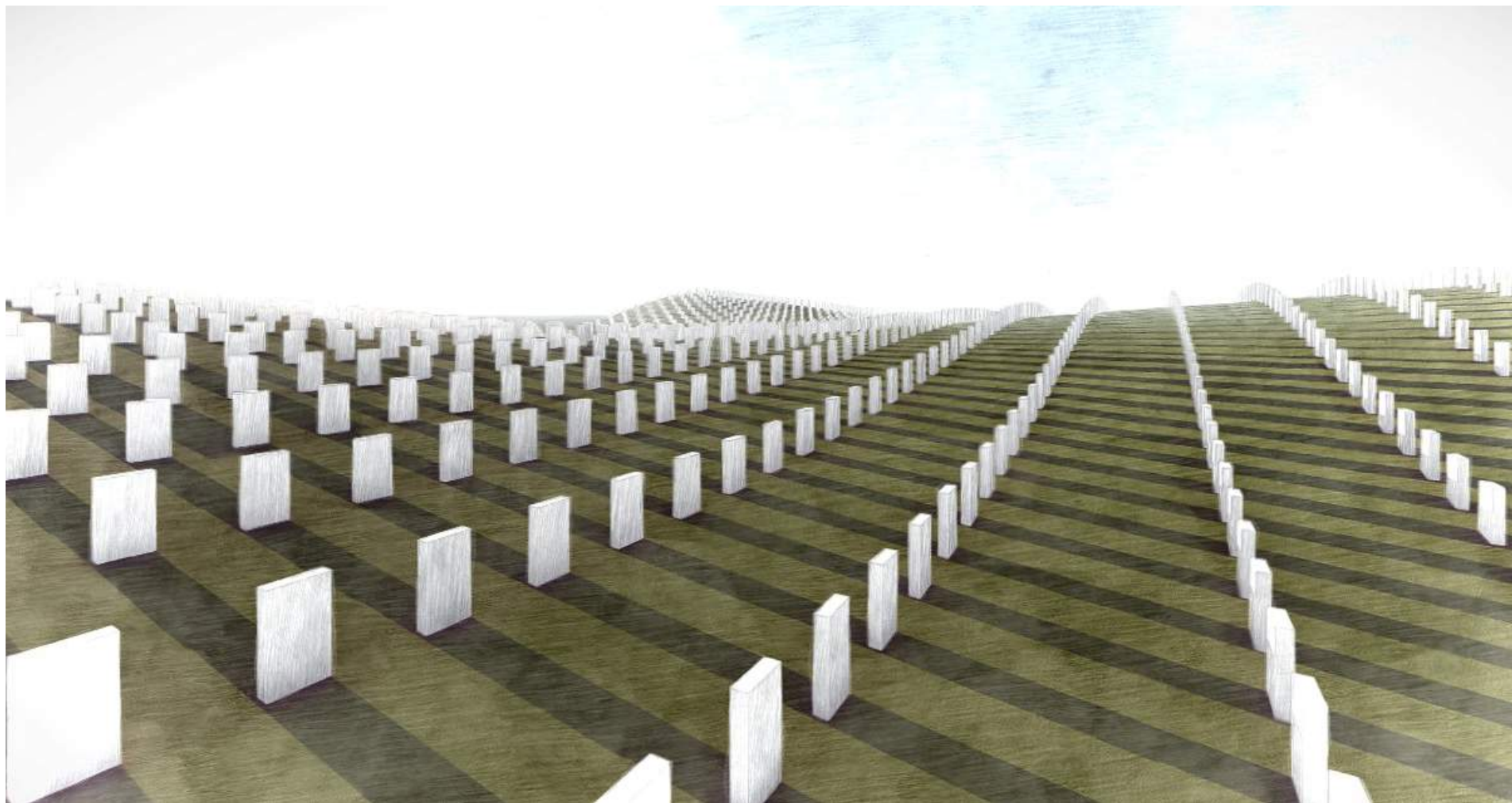
GRADING AND TREE CANOPY COVERAGE





**Concave**

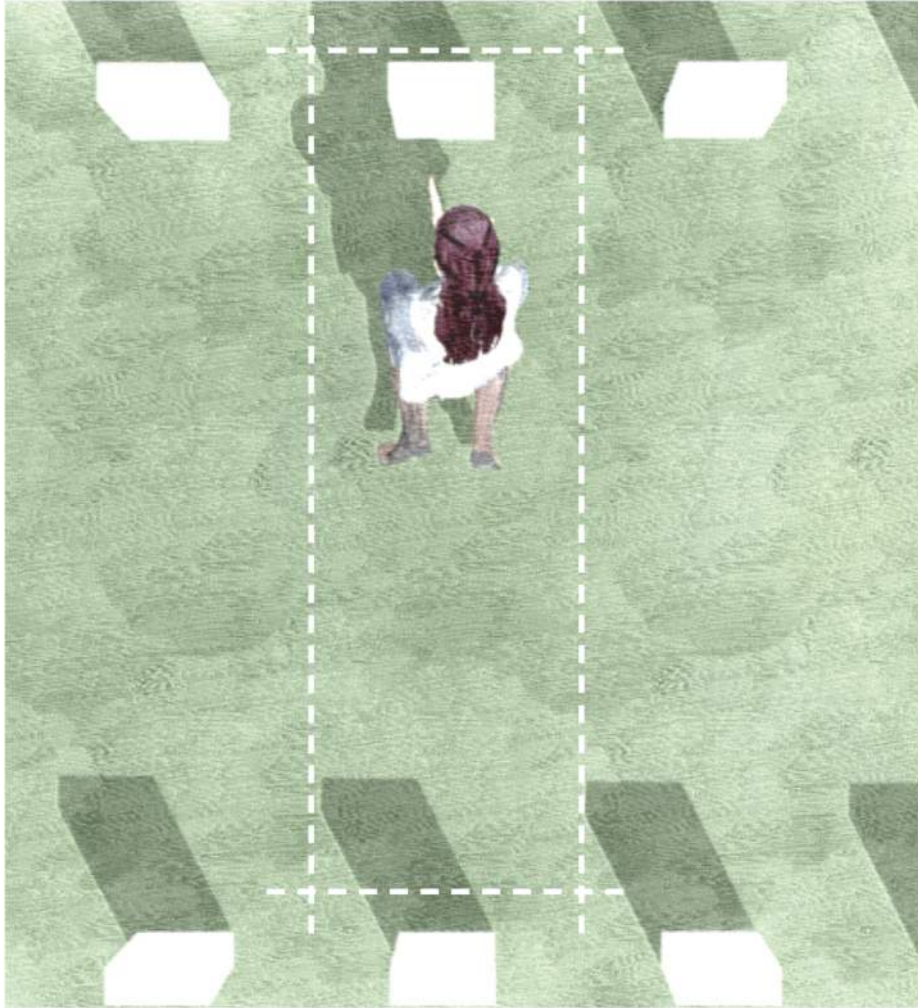




**Convex**

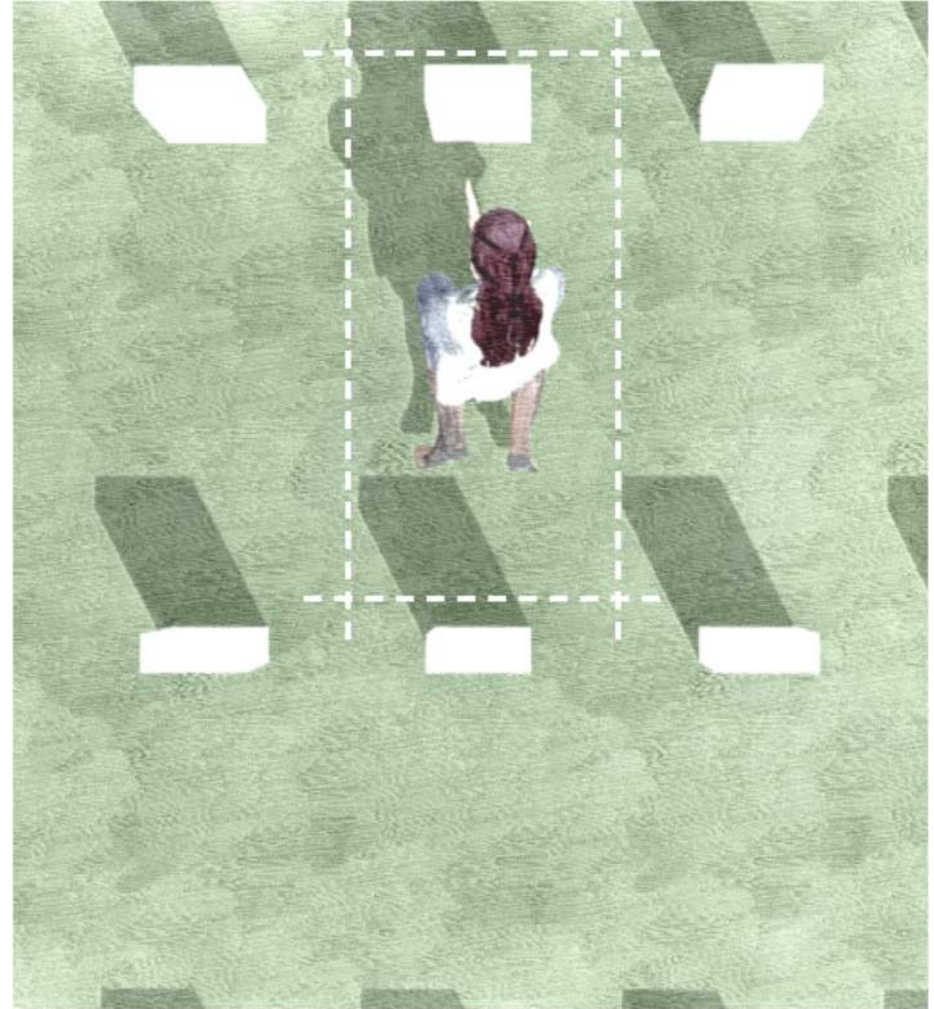


3 x 8 Grid



**In-Ground Pre-Set Crypts**

3 x 6 Grid



**In-Ground Cremated Remains**





THE ARLINGTON CHARACTER LOOKING SOUTH







