

Presented to:  
**Society of American Military Engineers**

# **John Wayne Airport Capital Improvement Program**

Presented by:  
**Komal Kumar**  
Assistant Airport Director

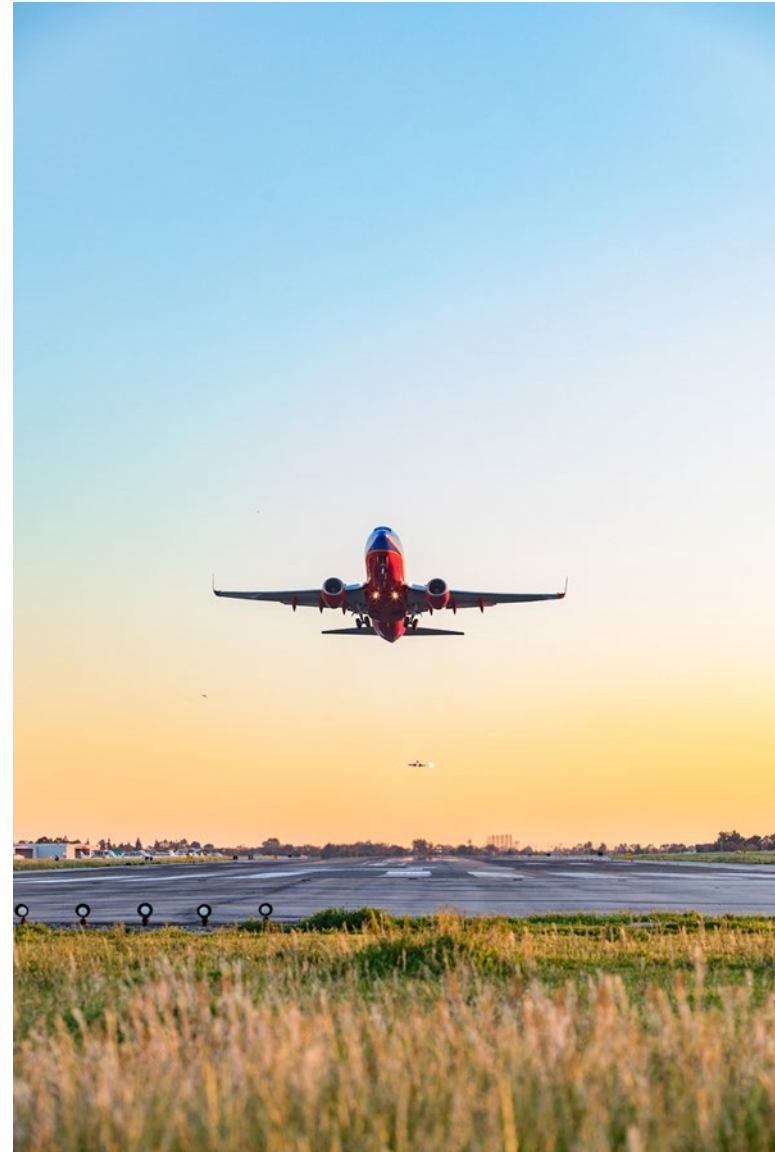
February 20, 2025



# Airport Overview

---

- Owned & operated by the County of Orange
- 510.15 acres
- Bordered by Costa Mesa, Irvine & Newport Beach
- Thomas F. Riley Terminal
  - 20 gates (loading bridge)
  - 2 commuter terminals
- Two runways
  - 5,700 feet (commercial aviation)
  - 2,887 feet (general aviation)





# Overview

---

- Settlement Agreement - Operational Limits
  - Passengers
  - Average Daily Departures (ADDs)
  - Noise
  - Curfew
- Total Passengers 2024: 11.08 M
  - Potential increase in 2026 to 12.5 M
- Total Operations 2024: 334,554
  - 32% Commercial
  - 68% General Aviation
- Top Five Destinations:
  - Phoenix
  - Seattle
  - Denver
  - Las Vegas
  - Dallas

---

# Capital Improvement Program

# Facility Accessibility Improvements

JWA conducted a detailed accessibility assessment and identified improvements needed to comply with Americans with Disabilities Act (ADA) requirements including, but are not limited to, the path of travels/pavement reconstruction; signage, handrail, and guardrail improvements; elimination of protruding objects and installation of required detection systems; restroom accessibility improvements; and various other adjustments and/or replacements for fixtures around the Airport.

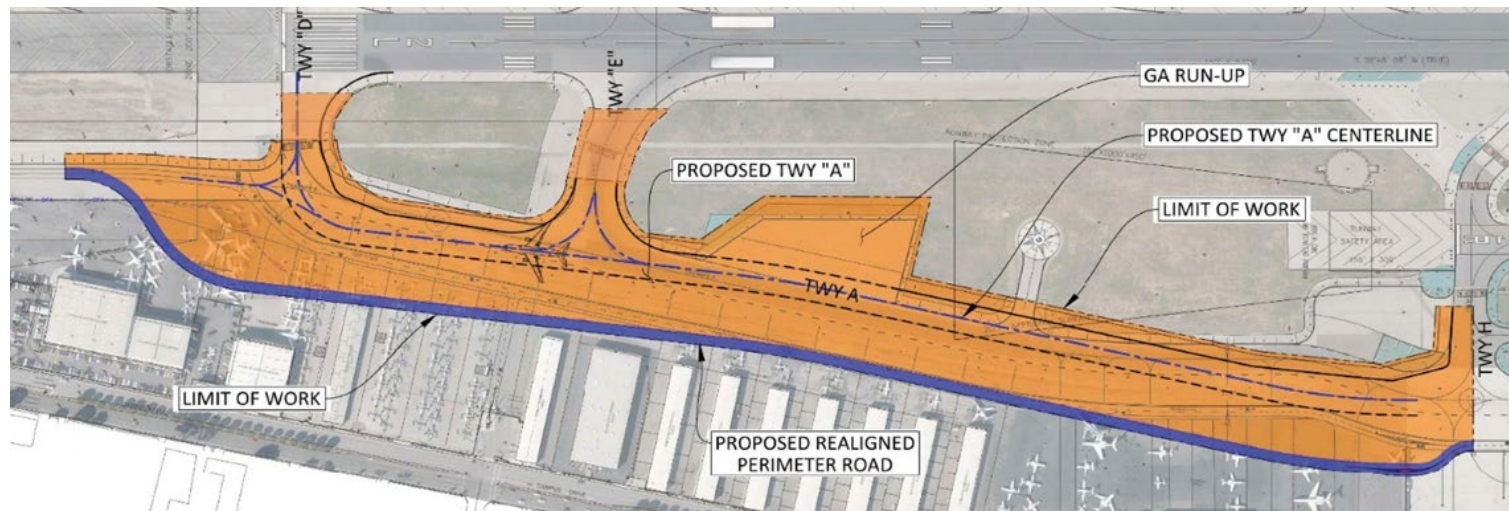
- Phase I – Design-Build
  - Design – *(Completed)*
  - Construction Completion – FY 25/26
- Phase II – Job Order Contracting
  - Design – FY 24/25
  - Construction – FY 25/26





# Taxiways A - D - E Reconstruction

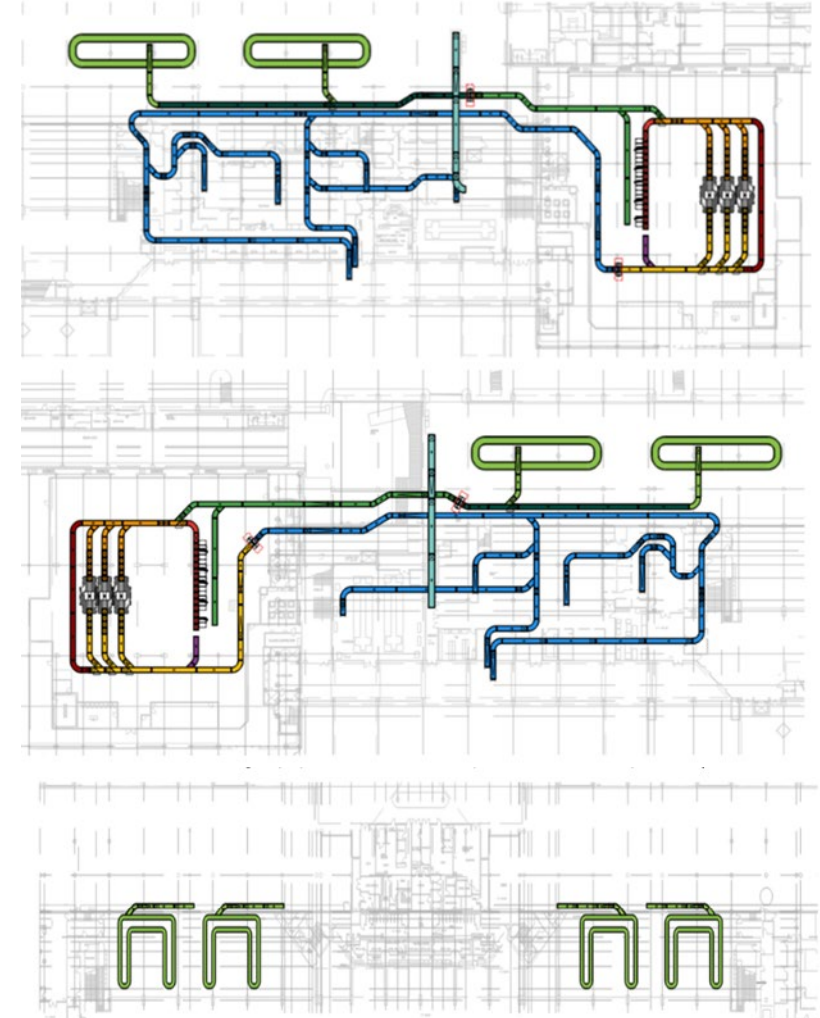
- Reconstructs the pavement of Taxiway A, a portion of Taxiway D, and a portion of E and associated improvements to markings, lighting, signage, and drainage. Taxiway A will be slightly realigned, requiring a relocation of the vehicle service road and reconstruction of the adjacent impacted runoff.
- The new alignment of Taxiway A improves the geometry of the airfield and clarifies turns to connecting taxiways.
- Design – *(Completed FY24/25)*
- Construction Start – FY 24/25



# Terminals A and B BHS Improvements

---

- The inbound & outbound baggage systems will be replaced in Terminals A&B and improvements will be implemented on the baggage system in Terminal C.
- All existing conveyors will either be refurbished (i.e., drives, rollers, belting, and bearings replaced) or replaced with new conveyors.
- Operational enhancements to the BHS systems will be investigated during the Design Phase for feasibility of implementation.
- Planning & Prelim. Design – FY 25/26
- Construction – FY 27/28



# Airfield Perimeter Security Improvements

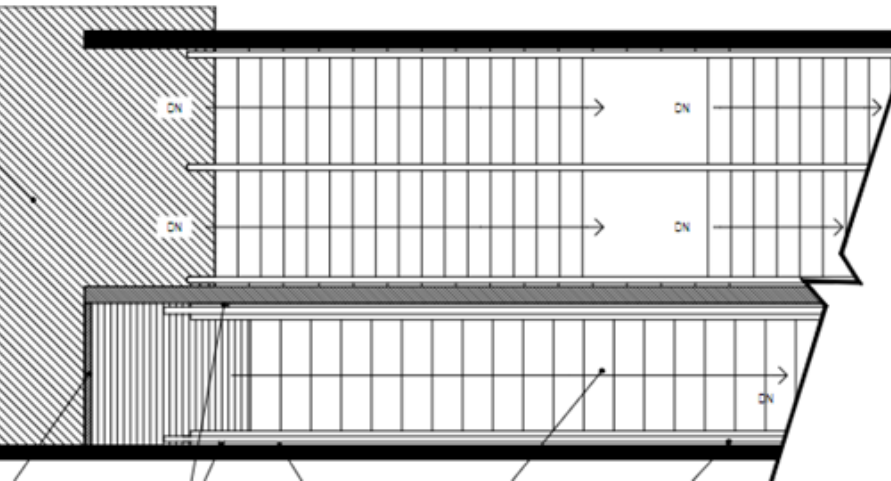
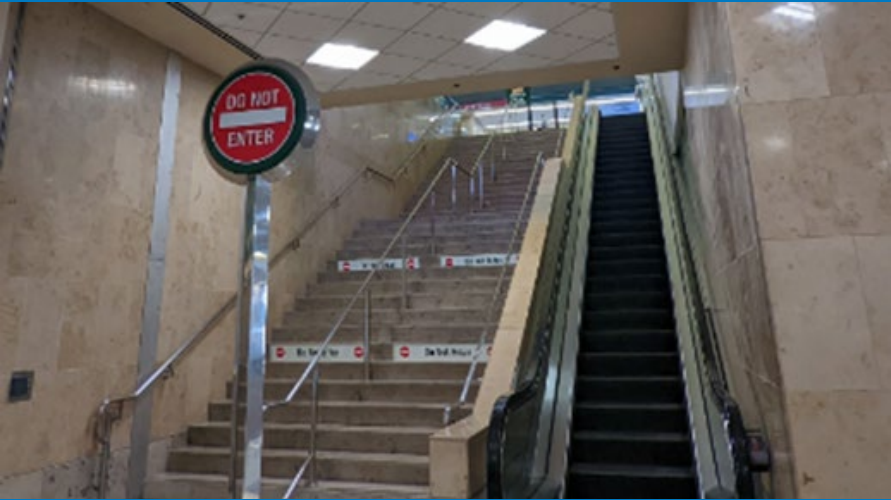
This project will replace the existing airfield perimeter fence with a taller, anti-climbable system and the replacement of three existing vehicle perimeter gates and one emergency gate with enhanced gates and guard booths integrated with the access control system.

- Phase II
  - Design – (Completed)
  - Construction – FY 24/25
- Phase III
  - Design – FY 25/26
  - Construction – FY 26/27





# Vertical Conveyor System Improvements (Escalator and Elevator Replacement)



- Replace and/or rehabilitate all existing elevators and escalators at John Wayne Airport (JWA). Escalators and elevators in Terminals A and B were installed in 1990 and were installed in 2011 in Terminal C. There are 14 elevators in Terminals A, B, and C combined. There are 28 elevators and 9 escalators within the Airport complex that will be replaced and/or rehabilitated.
- The project will be performed in phases to reduce impacts on traveling passengers.
- Phase I – Scheduled Completion FY25/26
- Phase II, III & IV
  - Design Start – FY 25/26
  - Construction – FY 26/27 to FY29/30

# Common Use Passenger Processing System (CUPPS) Replacement

Common Use Passenger Processing System (CUPPS) Replacement throughout the terminals will include the replacement of existing Common Use Self-Service equipment, Flight Information Display System, Common Use Passenger Processing workstations and the associated software platform

- RFP for equipment replacement – FY25/26
- Implementation – FY 26/27





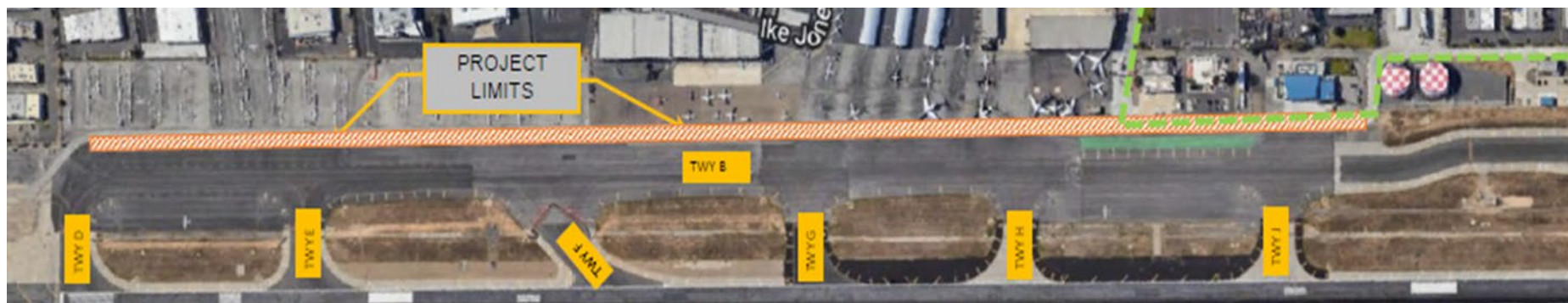
# Taxiway B Service Road Realignment

---

The existing vehicle service road running adjacent to Taxiway B will be relocated to provide the needed 121.5 feet of clearance from the center of the Taxiway.

The existing service road has around 118 feet of clearance at points and is slightly within the Taxiway Object Free Area. Relocation is required to ensure that the service road meets FAA clearances.

- Design - *(Complete)*
- Construction - FY24/25 *(JOC)*



# Airport Power Generation and Distribution Upgrades

The overall program, including all phases, will improve power system reliability and resiliency, mitigate electrical interruptions, reduce outages and dependence on Southern California Edison (SCE), and develop an asset database to assist management, maintenance, and future capital needs.

- Phase 1 - Electrical Distribution Modernization consists of re-feeding 12 kV distribution, replacement of the medium voltage switchgear and substations and upgrade the emergency system.
- Phase 2 – Central Utility Plant (CUP) co-generation plant system improvements, including SCADA, blackstart, battery storage, load shedding capabilities, and water treatment system upgrades.
- Phase 3 – Replacement of aging electrical equipment in the terminal complex and at other airport facilities.
- Phase I
  - Design – *In process*
  - Construction – FY25/26-FY27/28 (CMAR award)
- Phase II – Initiating planning & prelim. design
  - Design – FY26/27





---

# General Aviation Improvement Program (GAIP)

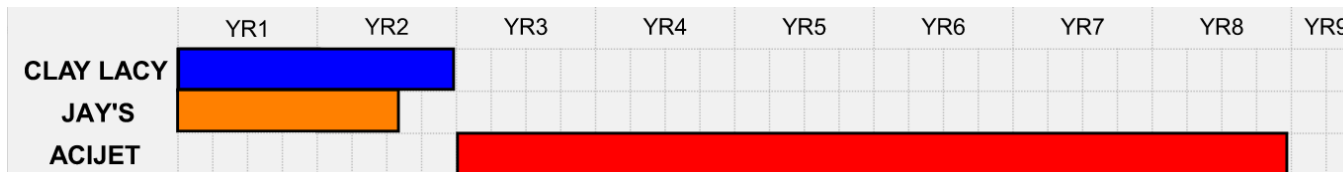
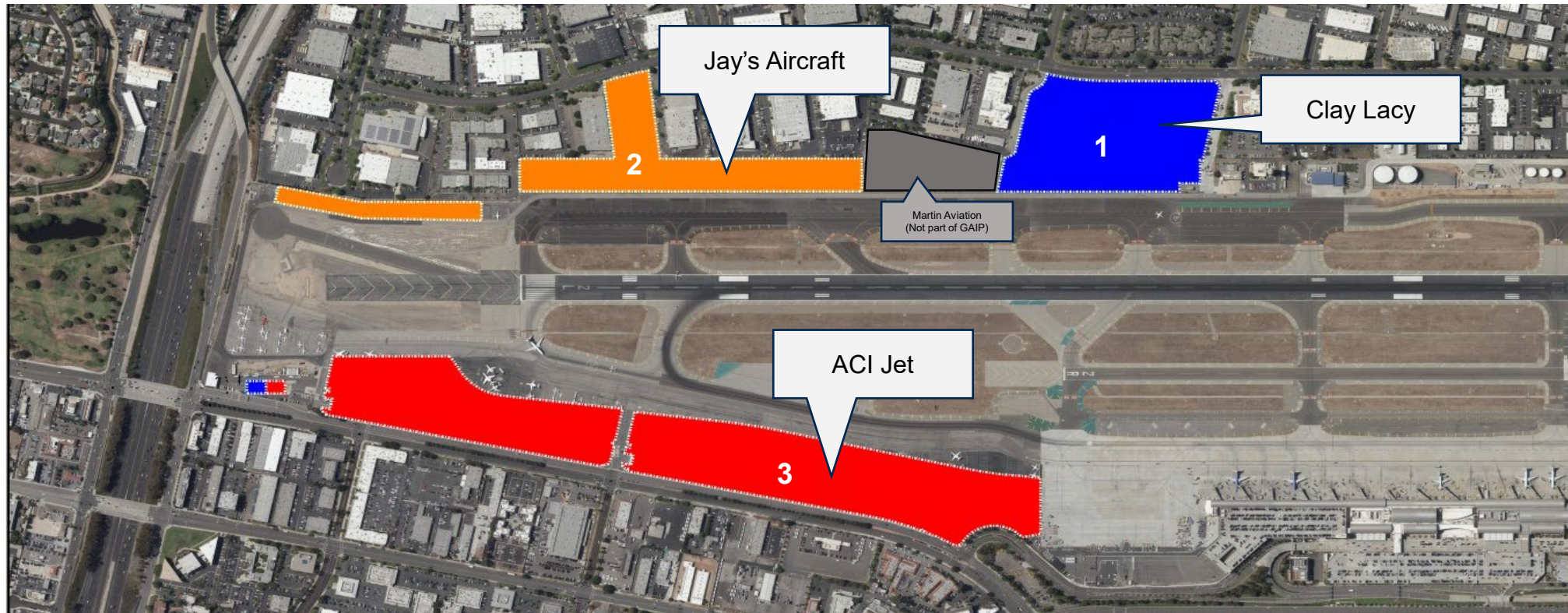


# GAIP Timeline

- June 2019:
  - Final program EIR certified by Board of Supervisors
- Fall 2020:
  - Board awarded leases to three Fixed Based Operators
- June – Oct 2023:
  - Clay Lacy final permits issued
- November 14:
  - Clay Lacy groundbreaking ceremony

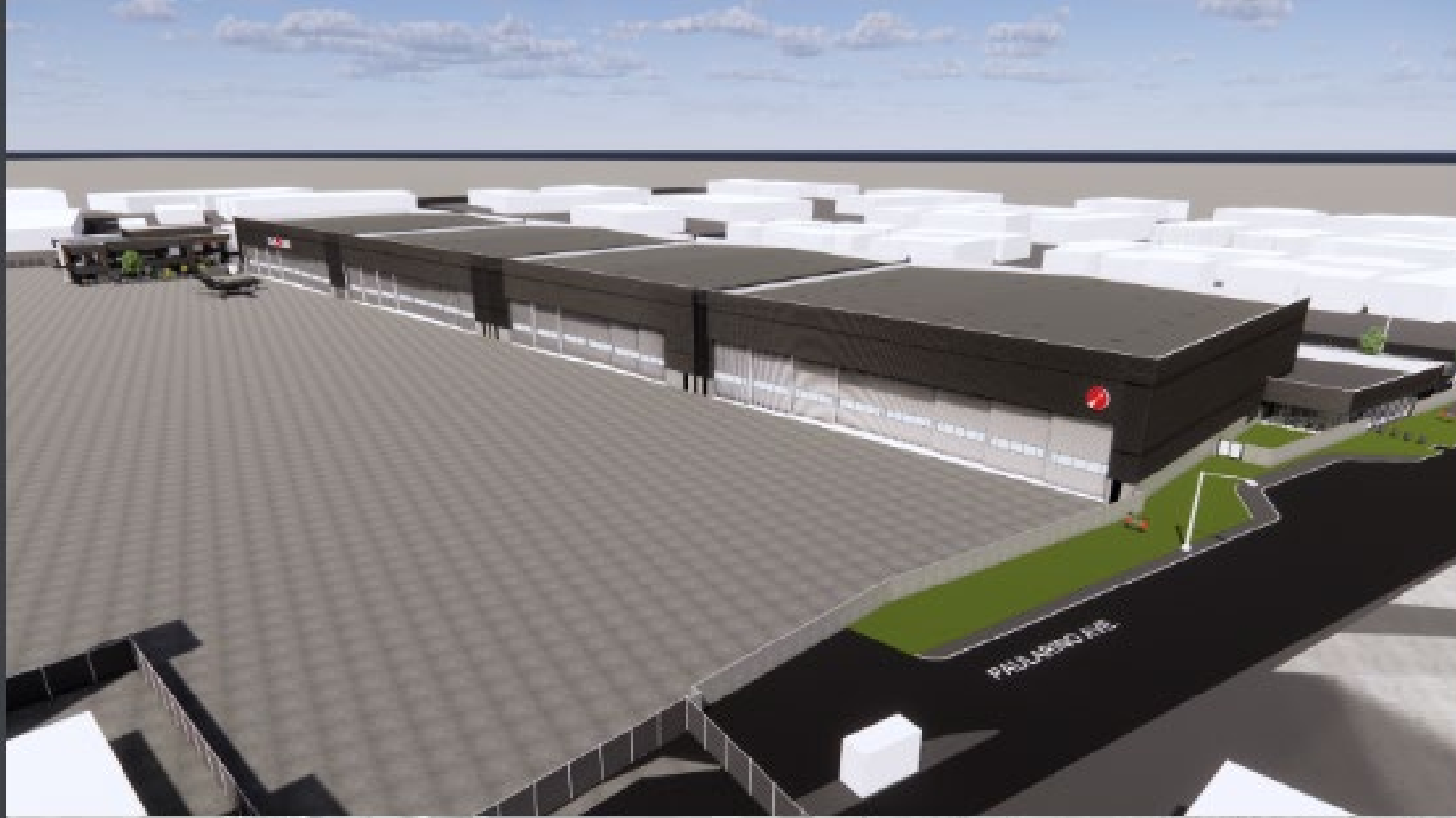


# GAIP Map and Sequence Plan



CONSTRUCTION SEQUENCE. START AFTER RECEIPT OF NEPA, COUNTY PERMITS APPROVALS.

**JOHN WAYNE AIRPORT**  
ORANGE COUNTY



ALL VIEW – OVERALL NORTHWEST SITE – LOOKING NORTHEAST



ARIEL VIEW – OVERALL NORTHWEST SITE – FRONT WITH FLIGHT SCHOOL – LOOKING SOUTH EAST



# Clay Lacy Renderings



# Jay's Renderings







Exterior Rendering 3: FBO Complex Approach from Campus Drive



# ACI Jet Renderings



Exterior Rendering 1: Bird's Eye View Looking Southeast



Exterior Rendering 2: Bird's Eye View Looking Northeast

# FBOs Capital Investment

---

## **ACI Jet** - \$86,508,650

35 Year Lease Term

Approximately 31 acres

## **Clay Lacy** – \$57,897,531

35 Year Lease Term

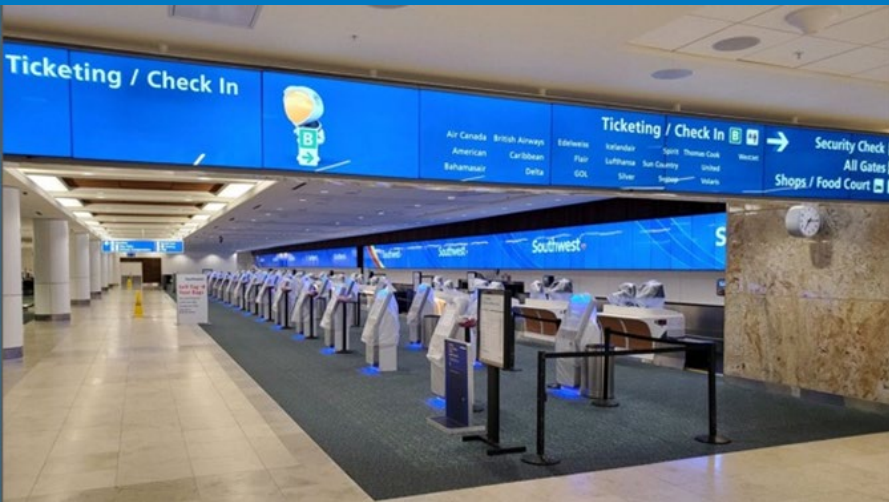
Approximately 14 acres

## **Jay's Air Center** – \$17,818,991

30 Year Lease Term with 5 Year Option to Extend

Approximately 14 acres





# Additional Projects

---

- Electric Charging Stations
- Executive Program Management
- Concessions Program Revamp (80%-37,000 sq ft)



# County Procurement Office

---

<https://cpo.ocgov.com/doing-business-oc/vendor-registration>



For more information:

**OCAIR.COM**



@johnwayneairport



@johnwayneair



@johnwayneair