



# Fostering Engineering Leadership for our Nation

- Philanthropic arm of the Society
  - Independent governance
  - 501(c)(3) that supports SAME's educational & scientific purposes
- Primary programs include, but are not limited to:
  - National Leader Development Program
  - National Engineering & Construction Camp Program
  - National STEM Outreach Program
- Provide an optional growth repository for Post Funds



# Foundation Update

- Thanks for making 2024 our best year ever!
  - Tremendous post and regional support; strong “Individual Giving Campaign;” and, increasing corporate commitment – [PHX Post gave \\$5,000](#)
  - LDP “Cradle to STEM” project was a tremendous success
- We are optimistic 2025 will set new standard
  - 2<sup>nd</sup> Annual Silent Auction at Cap Week
  - Focus on external corporate giving
  - Continued internal support
  - Increase financial support of Society programs

REGIONAL

PRIDE

A SILENT AUCTION  
TO SUPPORT

SAME

FOUNDATION



Showcase the best of what makes your region unique by donating items that represent its spirit and pride! From local specialty goods to cultural experiences that can only be found in one place, your generous contribution will help raise funds for a great cause, SAME Foundation.

CAPITAL WEEK • MARCH 25, 2025

To learn more about how to submit your donation, simply scan the QR code above.

# Cradle to STEM - New Orleans SBC

- SAME-themed STEM at SBC/JETC to inspire interest in STEM for economically disadvantaged children.
- Promote equal STEM education opportunities; economic disadvantage is one of the most significant barriers to STEM for young people.



- 17 industry volunteers joined 93 kids from New Orleans Boys and Girls Club (ages 6 – 15)
- Building Strong Bridges and Clean Water
- Kids presented; awards for best engineering, most innovative, best presentation, and best teamwork.

# 2025 Campaign

## *Count Me In!*

- ✓ *Can we count on you to make dreams come true?*
- ✓ *Can we count on you to help STEM journeys start?*
- ✓ *Can we count on you to make rising leaders soar?*
- ✓ *Can we count on you to invest in SAME's future?*

**We're shaping the future of engineering leadership for  
the nation...can we COUNT YOU IN FOR 2025?**

# Invest with the Foundation

- Alleviate burden on volunteers to manage investments/funds
- Post Funds placed with Foundation remain Post funds; minimum amounts:  
Small Posts: \$20,000   Medium Posts: \$30,000   Large Posts: \$50,000
- Foundation invests/manages Post Funds in accordance with Foundation's Investment Policy
- Investment fees and costs pro rata shared by Foundation/Posts
- Foundation separately tracks each Post's balance and reports investment returns, expenses, and overall balance
- Posts continue to direct disbursement of their own funds

## Posts who currently invest with the Foundation

as of July 2024

- Albuquerque
- Buffalo
- Central VA
- Hampton Roads
- Huntsville
- Houston
- Louisiana
- Mid-Maryland
- Narragansett Bay
- NOVA
- Omaha
- Orange County
- Panama City
- Pittsburgh
- Tampa Bay

# Questions???

## DONATE



- General Questions about the Foundation:  
Kathy Off, [koff@same.org](mailto:koff@same.org)
- Questions about investing Post funds:  
Taha Seid, [tseid@same.org](mailto:tseid@same.org)
- Questions about resource requests:  
Rob Biedermann, [rbiedermann@same.org](mailto:rbiedermann@same.org)



*Fly, Fight, & Win*



# Luke AFB Update

Lt Col John Marshall  
56 Civil Engineer Squadron  
Commander

**30 JAN 2025**



# Overview



*Fly, Fight, & Win*

- Luke AFB Overview
- 56<sup>th</sup> Civil Engineer Squadron
- Luke AFB Status of Infrastructure
- Luke AFB Construction Program Update



# 56TH FIGHTER WING LUKE AIR FORCE BASE



The 56th Fighter Wing, headquartered at Luke Air Force Base, Phoenix, Ariz., is the largest fighter wing in the U.S. Air Force. The wing is part of Air Education and Training Command. The wing also oversees the Gila Bend Air Force Auxiliary Field and is steward of the 1.7 million acre Barry M. Goldwater Military Training Range.

## MISSION

We train the world's greatest fighter pilots and combat-ready Airmen!

## VISION

The world's premier fighter wing... advancing airpower to win tomorrow's fight.



WE TRAIN 75% OF THE WORLD'S F-35 PILOTS



Active: 5,280  
Reserve: 2,365  
Civilian: 2,876

## ECONOMIC IMPACT

DIRECT: \$974 Million  
INDIRECT: \$761 Million  
INDUCED: \$697 Million  
Total Economic Impact in AZ  
\$3.8 Billion

## LEADERSHIP



Wing Commander  
Brig. Gen. David J. Berkland



Deputy Commander  
Col. Matthew R. Johnston



Command Chief  
CMSgt. Jason Q. Shaffer

## Luke AFB Public Affairs

14185 W. Falcon St., Bldg 452  
Luke AFB, AZ 85309

Phone: (623) 856-6011 Email: 56fw.pa@us.af.mil

[www.luke.af.mil](http://www.luke.af.mil)



## LUKE HISTORY

Luke Air Force Base is named for the WWI flying ace and Phoenix native Lieutenant Frank Luke Jr., the first aviator to receive the Medal of Honor. Lieutenant Luke scored 18 aerial victories, 14 against German observation balloons, before being killed at the age of 21 on Sept. 29, 1918.



## THUNDERBOLT NATION

Since 1941, Luke has graduated over 61,000 pilots

105 F-35 pilots annually

79 Intel specialists annually

98 F-35 maintainers annually

8 Medical lab technicians annually

16 Critical Care/Emergency Trauma Fellowship annually

236 Air Control Squadron personnel annually



## PARTNERS IN TRAINING

Italy



Netherlands



Norway



Singapore



Denmark



Belgium












# Luke Fighter Wing Roadmap

## Luke AFB, AZ



*Fly, Fight, & Win*

Type	Notes	CY24	CY25	CY26	CY27	CY28	CY29	CY30	CY31	CY32
USAF F-16	309 FS	7	4							
FMS F-16 	425 FS (RSAF)	12	12	12	12	12				
ADAIR	ATAC F-1	8	8	8	8	8	8	8		
	TAC F-16A	4	4	4	4	4	4	4		
TOTAL 4th Gen	PAI only	31	28	24	24	24	12	12	0	0
USAF F-35		95	102	104	106	106	106	106	106	106
Partner F-35		27	28	32	37	38	38	38	38	38
62 FS 	Norway	6	6	6	6	6	6	6	6	6
62 FS 	Italy	7	8	8	9	10	10	10	10	10
308 FS 	Denmark	6	6	6	6	6	6	6	6	6
308 FS 	Netherlands	8	8	8	8	8	8	8	8	8
Sq 6 	Canada			4	8	8	8	8	8	8
FMS F-35 - 312 FS 	Belgium	8	8	8	8	8	8	8	8	
TOTAL F-35	PAI only	130	138	144	151	152	152	152	152	144
TOTAL A/C	PAI only	161	166	168	175	176	164	164	152	144



# 56 FW Real Property Managed Assets



*Fly, Fight, & Win*

Area	# Bldgs	SF Bldgs	# Facilities *	# Owned Acres	# Acres Leased/Easement/B LM	Total Replacement Cost
Luke AFB	686	5,092,246.08	1538	2,926.44	1,910.72	\$ 4,401,232,170
Gila Bend AFAF	43	137,518	168	0	2,652.70	\$ 249,743,656.60
Ft Tuthill	32	36,093	54	14.21	.05	\$ 42,129,834.50
Waste Annex	8	25,846	42	0	46.06	\$ 40,560,135.02
BMGRE	8	7,323	115	42,881.98	1,110,126.36	\$ 968,747,211.40
Aux Field 1	1	1,000	20	400	705	\$ 152,656,559.40
Keystone Peak	1	200	3	0	4.34	0
Smiths Peak	0	0	1	0	.23	0
Sentinel Tracker	0	0	0	0	10.04	0
All other GSU's Includes Dysart @ FDGC	0	0	27	35.83	41.17	\$ 4,657,747.28
Totals	779	5,300,226.08	1,968	46,258.46	1,115,496.67	\$ 5,859,727,314

\* Facilities include buildings, structures, runways, lands, pavements, utility infrastructure, etc...



# 56th Civil Engineer Squadron



*Fly, Fight, & Win*

**Commander**  
Lt Col John  
Marshall

**Deputy Base  
Civil Engineer**  
Mr. Neil Wentz

**Senior Enlisted  
Leader**  
CMSgt John  
Chacon

**1st Sgt**  
MSgt Ramon  
Torres

**Section Chief**  
2d Lt Robyn Soh

**CE Operations**  
Maj Robin Walton

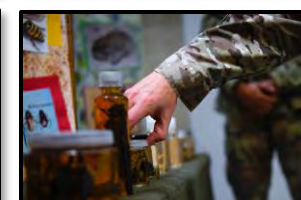
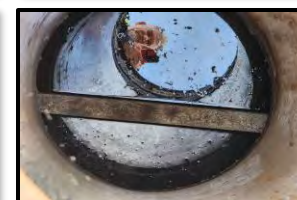
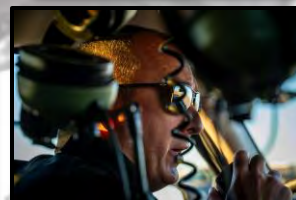
**Engineering**  
Mrs. Tauny Woo

**Installation  
Management**  
Mr. Kevin Haponek

**Fire Department**  
CMSgt Aaron  
Duggins

**EOD**  
Capt Carly Wills

**Emergency  
Management**  
Mr. Bruce Monson



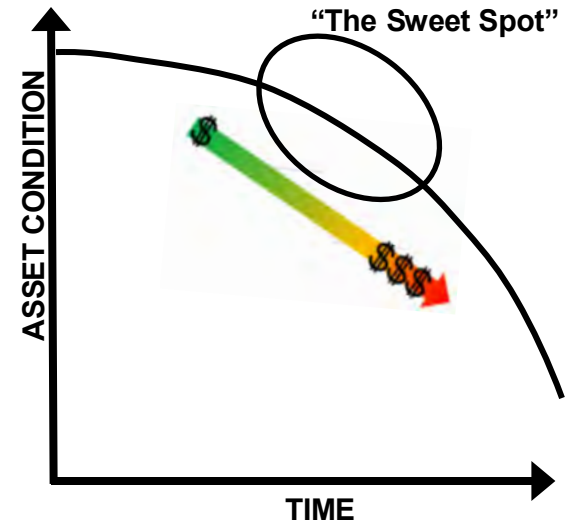
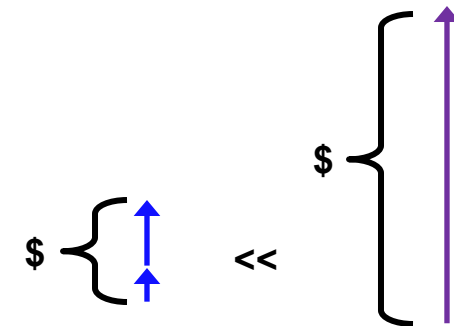
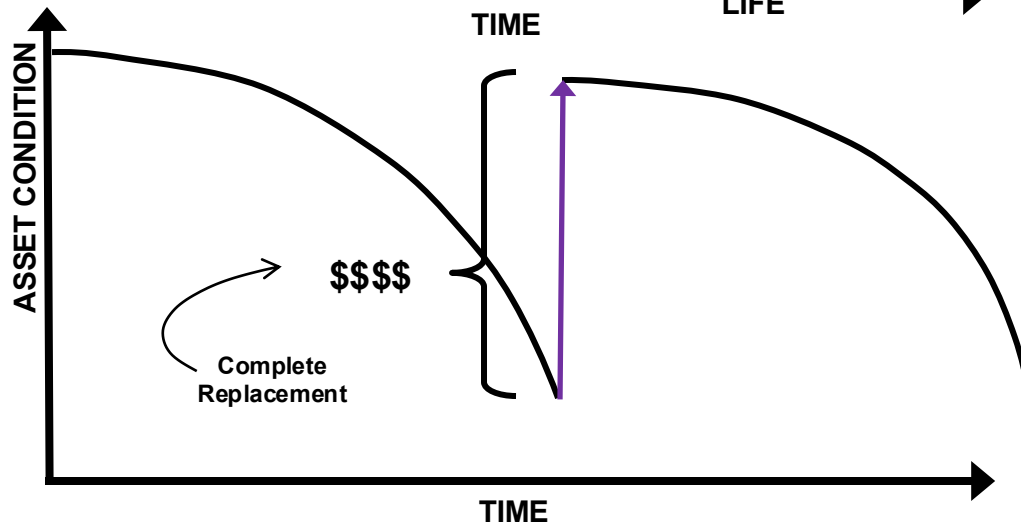
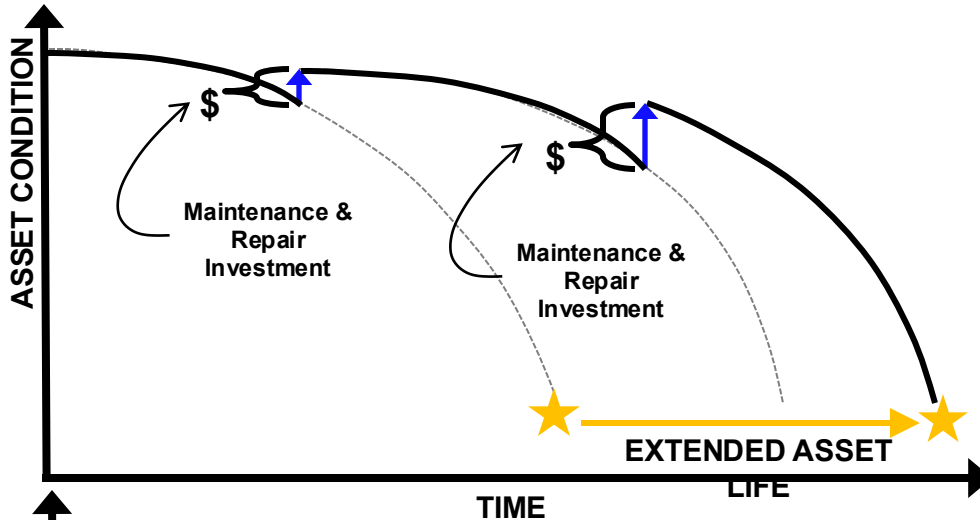
*Cave Tonitrum*



# Asset Management Principles



*Fly, Fight, & Win*



**Investing in the sweet spot maximizes investment and extends service life.**

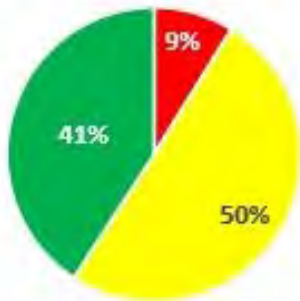


# Overall Facility Condition

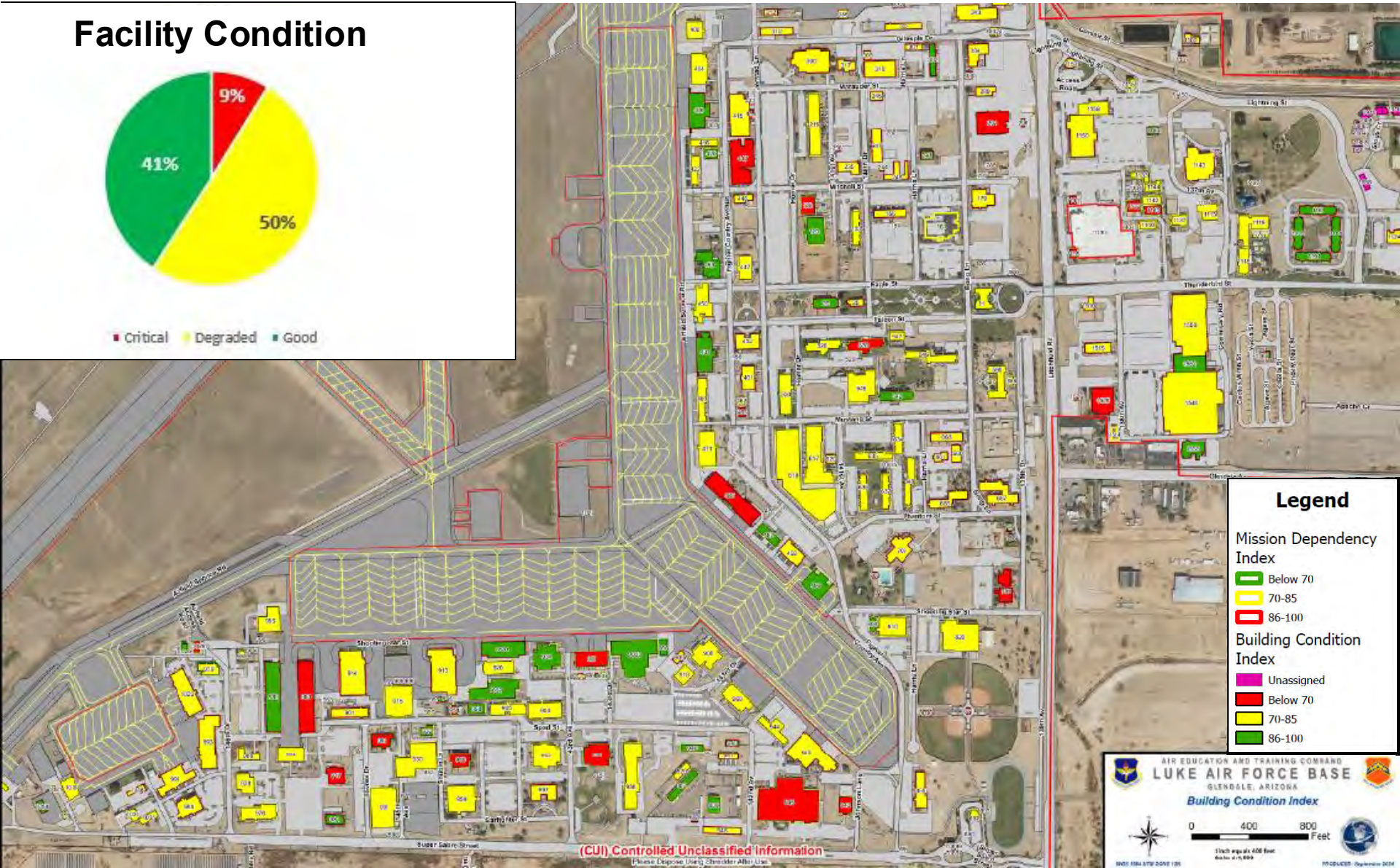


*Fly, Fight, & Win*

## Facility Condition

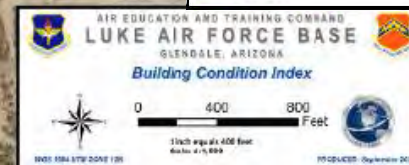


■ Critical ■ Degraded ■ Good



(CUI) Controlled Unclassified Information

Please Dispose Using Standard Air Use



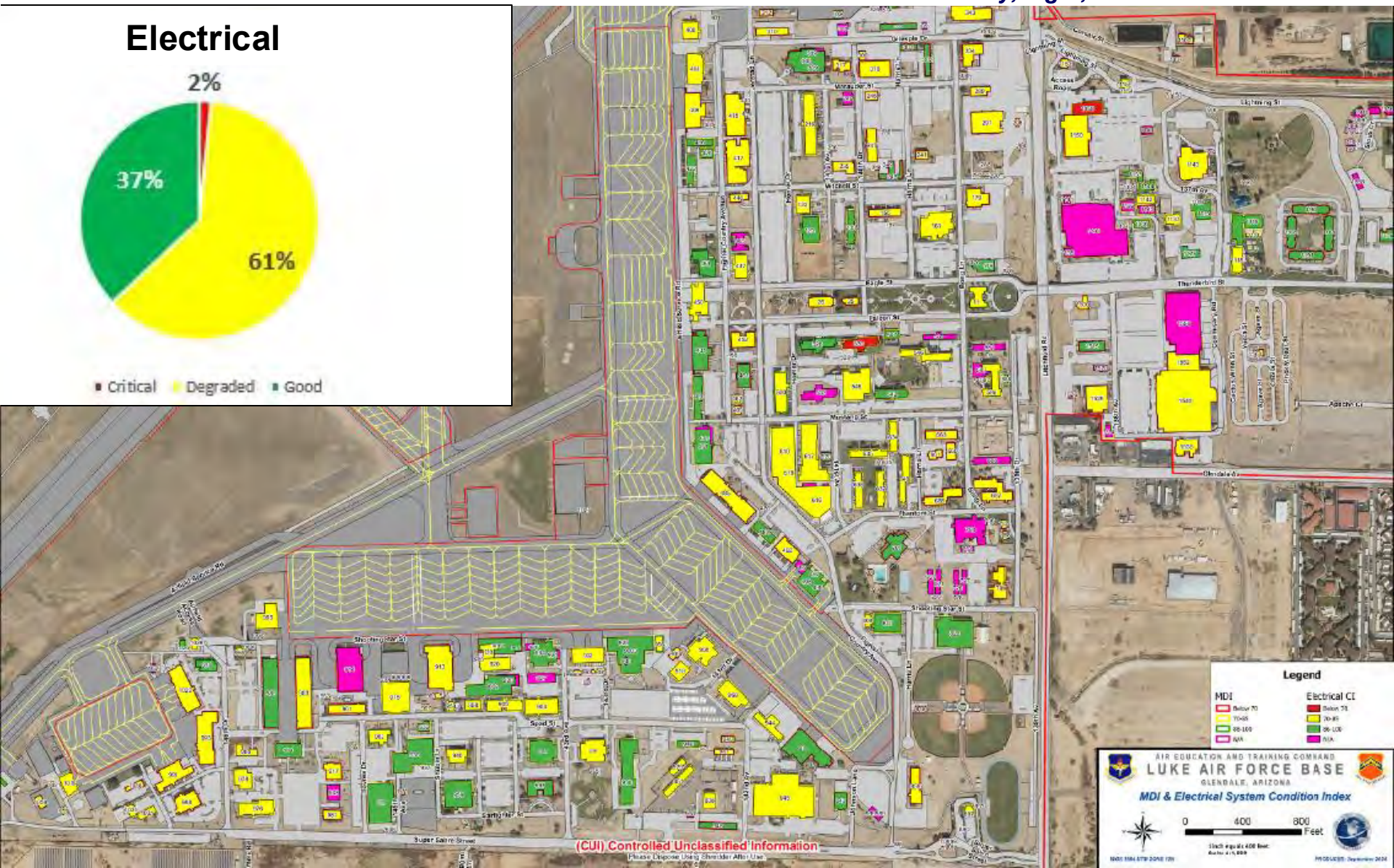
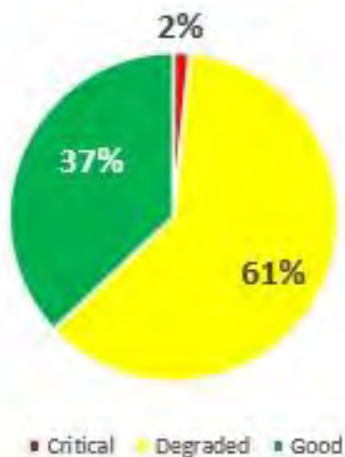


# Electrical




*Fly, Fight, & Win*

## Electrical




(CUI) Controlled Unclassified Information


Please Dispose of this Document After Use



AIR EDUCATION AND TRAINING COMMAND  
**LUKE AIR FORCE BASE**  
GLENDALE, ARIZONA


**MDI & Electrical System Condition Index**





0 400 800 Feet

Scale equals 400 Feet  
March 21, 2019



1903 1164 87P D006 120

1903 1164 87P D006 120

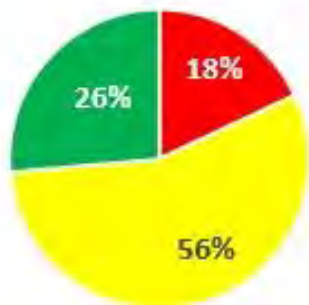


# Plumbing

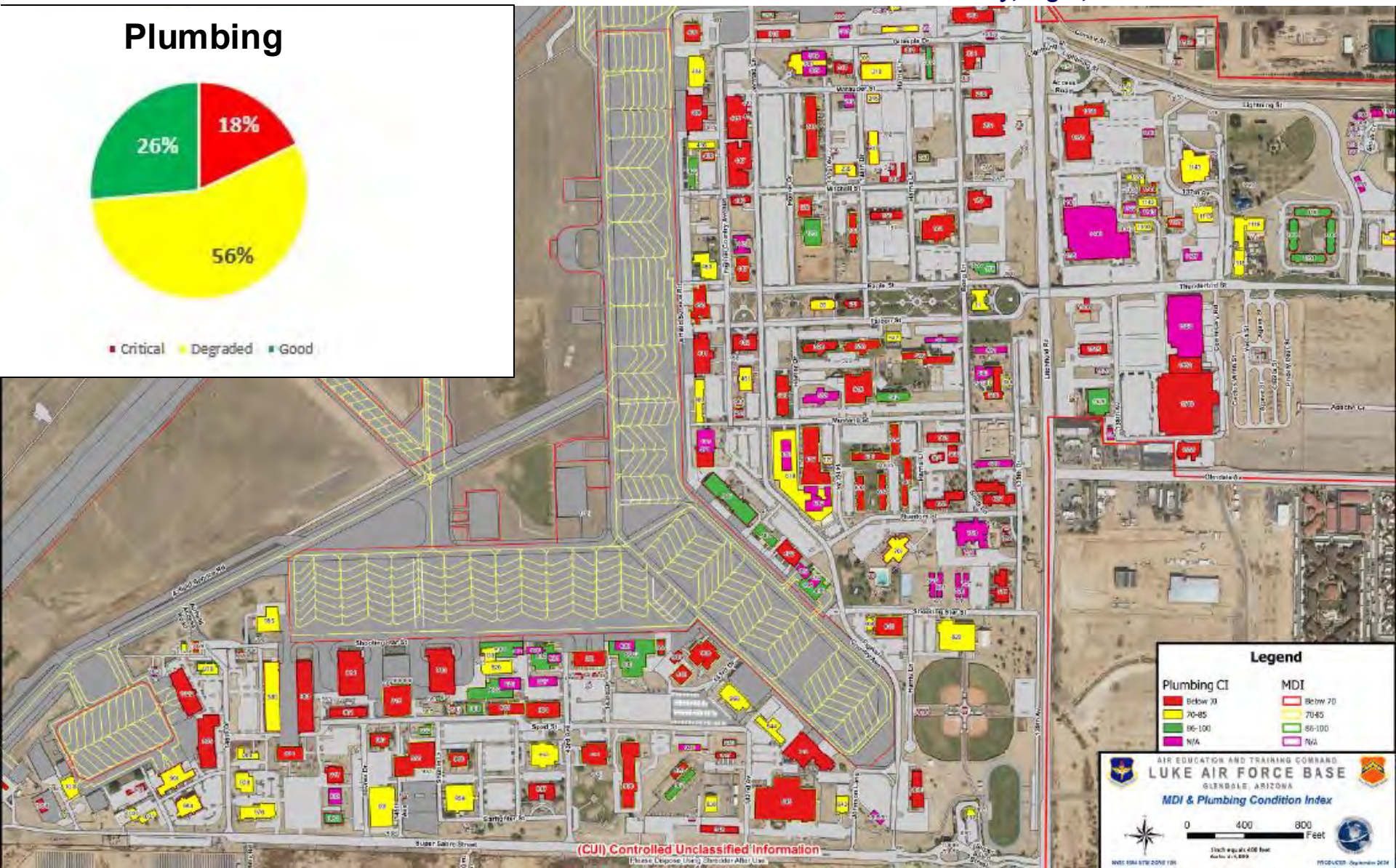


*Fly, Fight, & Win*

## Plumbing




■ Critical ■ Degraded ■ Good



(CUI) Controlled Unclassified Information


Please Dispose Using Standard After Use

Legend	
Plumbing CI	MDI
Below 70	Below 70
70-85	70-85
86-100	86-100
N/A	N/A




AIR EDUCATION AND TRAINING COMMAND  
**LUKE AIR FORCE BASE**  
GLENDALE, ARIZONA

**MDI & Plumbing Condition Index**



0 400 800 Feet

Scale: 1 inch equals 400 feet  
Date: 11/1/2019



ISSUED: September 2019

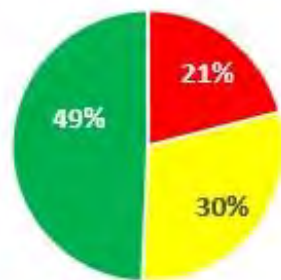


# Roofs

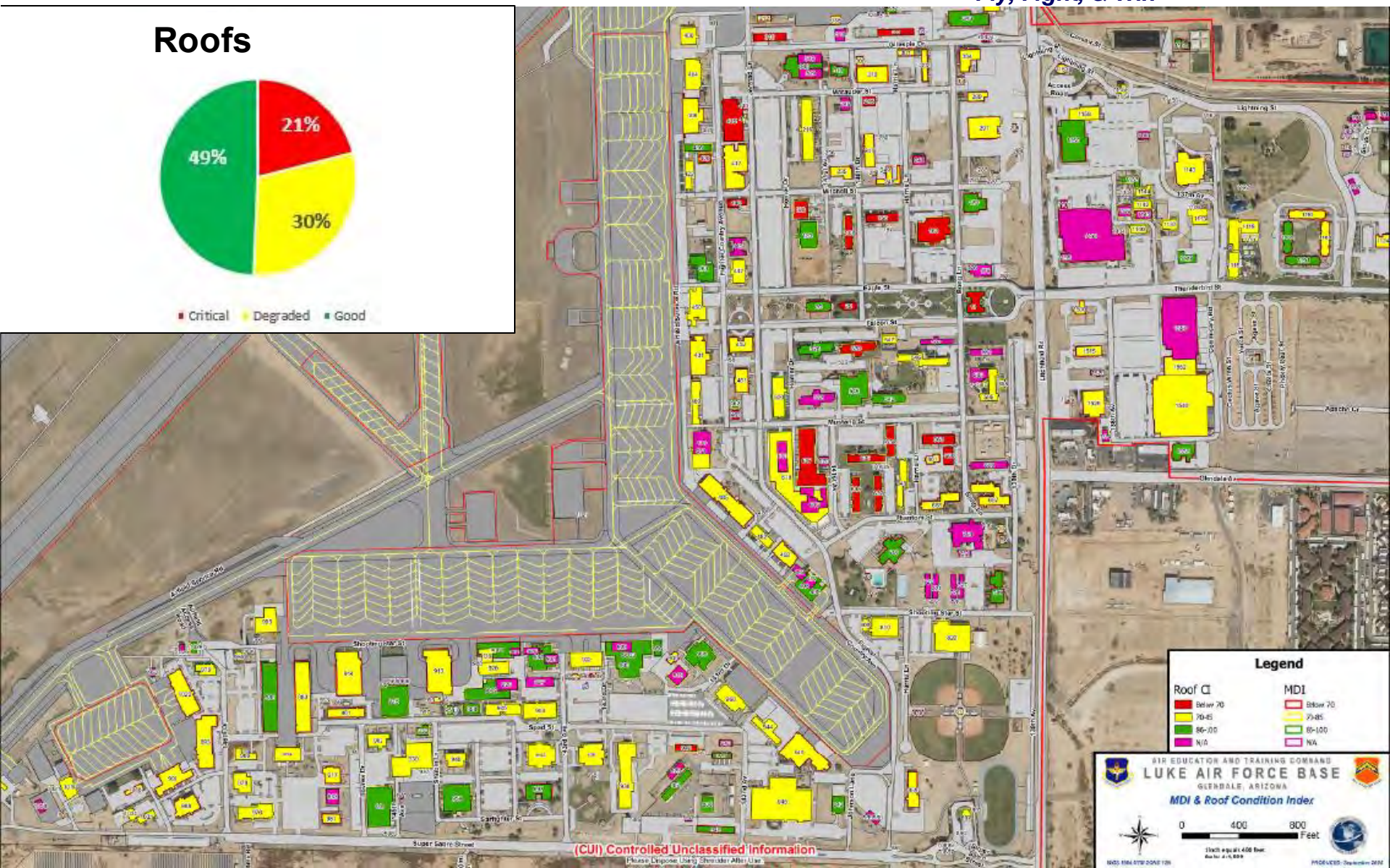


*Fly, Fight, & Win*

## Roofs



■ Critical ■ Degraded ■ Good



(CUI) Controlled Unclassified Information

Please Dispose Using Shredder After Use

**Legend**

Roof	MDI
Below 70	Below 70
70-85	70-85
86-100	86-100
N/A	N/A

AIR EDUCATION AND TRAINING COMMAND  
**LUKE AIR FORCE BASE**  
GLENDALE, ARIZONA

**MDI & Roof Condition Index**

0 400 800 Feet

Scale equals 400 Feet  
Ratio: 4:1,000

8005 100A 0702 D000 1208  
PRODUCED: December 2018

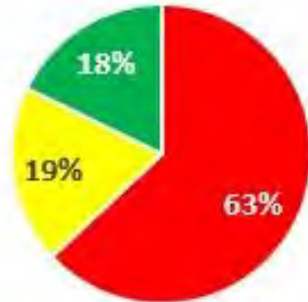


# HVAC

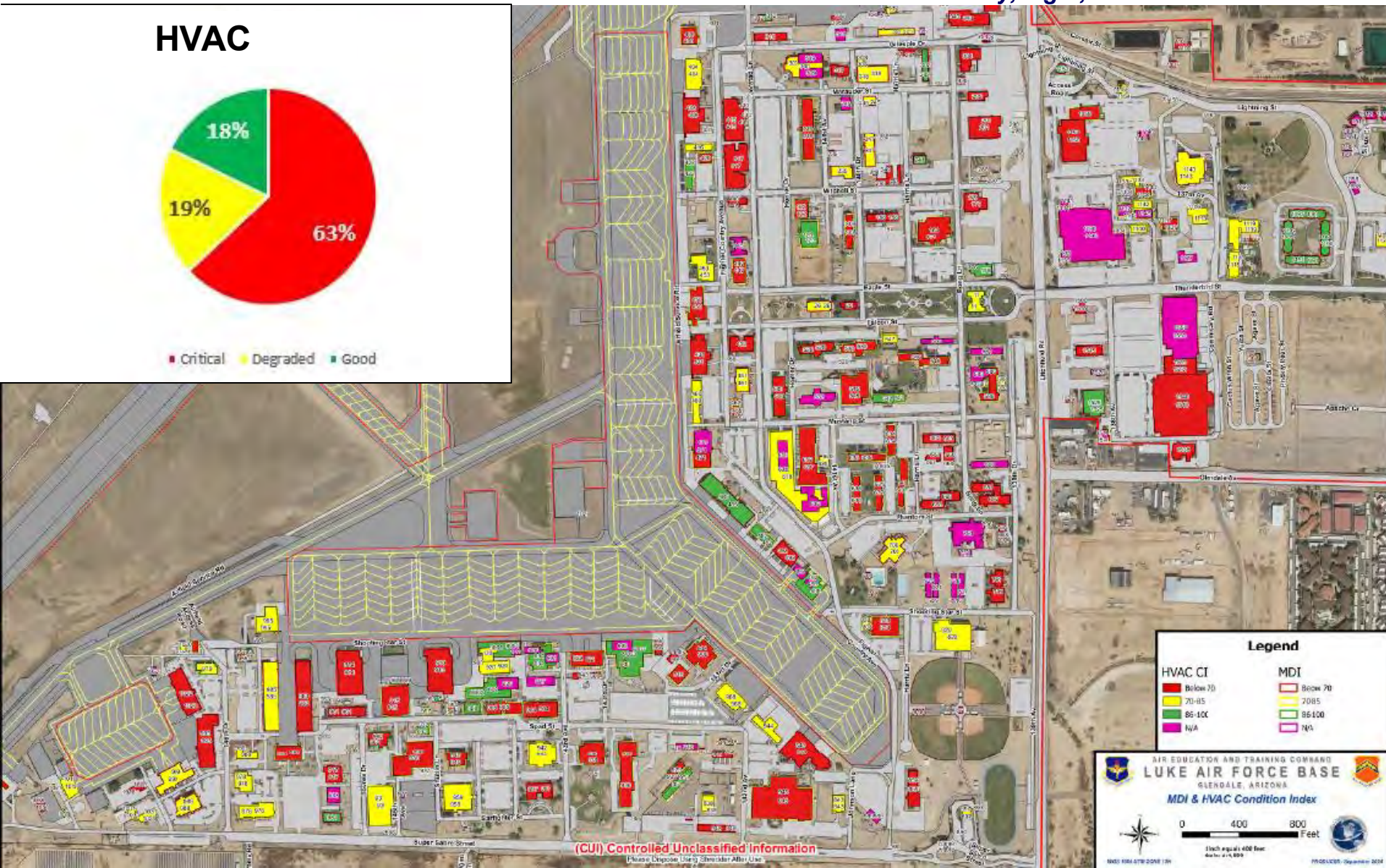


*Fly, Fight, & Win*

## HVAC



■ Critical ■ Degraded ■ Good



(CUI) Controlled Unclassified Information

Please Dispose Using Standard ATRC Use



# Airfield Condition



*Fly, Fight, & Win*

- ☐ Non-pavement/No data
- ☐ Good (86.00-100.00)
- ☐ Satisfactory (71.00-85.00)
- ☐ Fair (56.00-70.00)
- ☐ Poor (41.00-55.00)
- ☐ Very Poor (26.00-40.00)
- ☐ Serious (11.00-25.00)
- ☐ Failed (0.00-10.00)

Category Code	MDI
111111 - RUNWAY	99
116642 - SHOULDER, PAVED	95
112211 - TAXIWAY	95
113321 - APRON	95
116666 - PAD, WARMUP, HOLDING	95
116661 - ARMING AND DISARMING PADS	95
111115 - OVERRUN, PAVED	90
116672 - AIRCRAFT WASHRACK	78
116922 - AIRCRAFT ARRESTING SYSTEM SUPPORT	75





# Roads & Parking Lots



*Fly, Fight, & Win*

- Non-pavement/No data
- Good (86.00-100.00)
- Satisfactory (71.00-85.00)
- Fair (56.00-70.00)
- Poor (41.00-55.00)
- Very Poor (26.00-40.00)
- Serious (11.00-25.00)
- Failed (0.00-10.00)



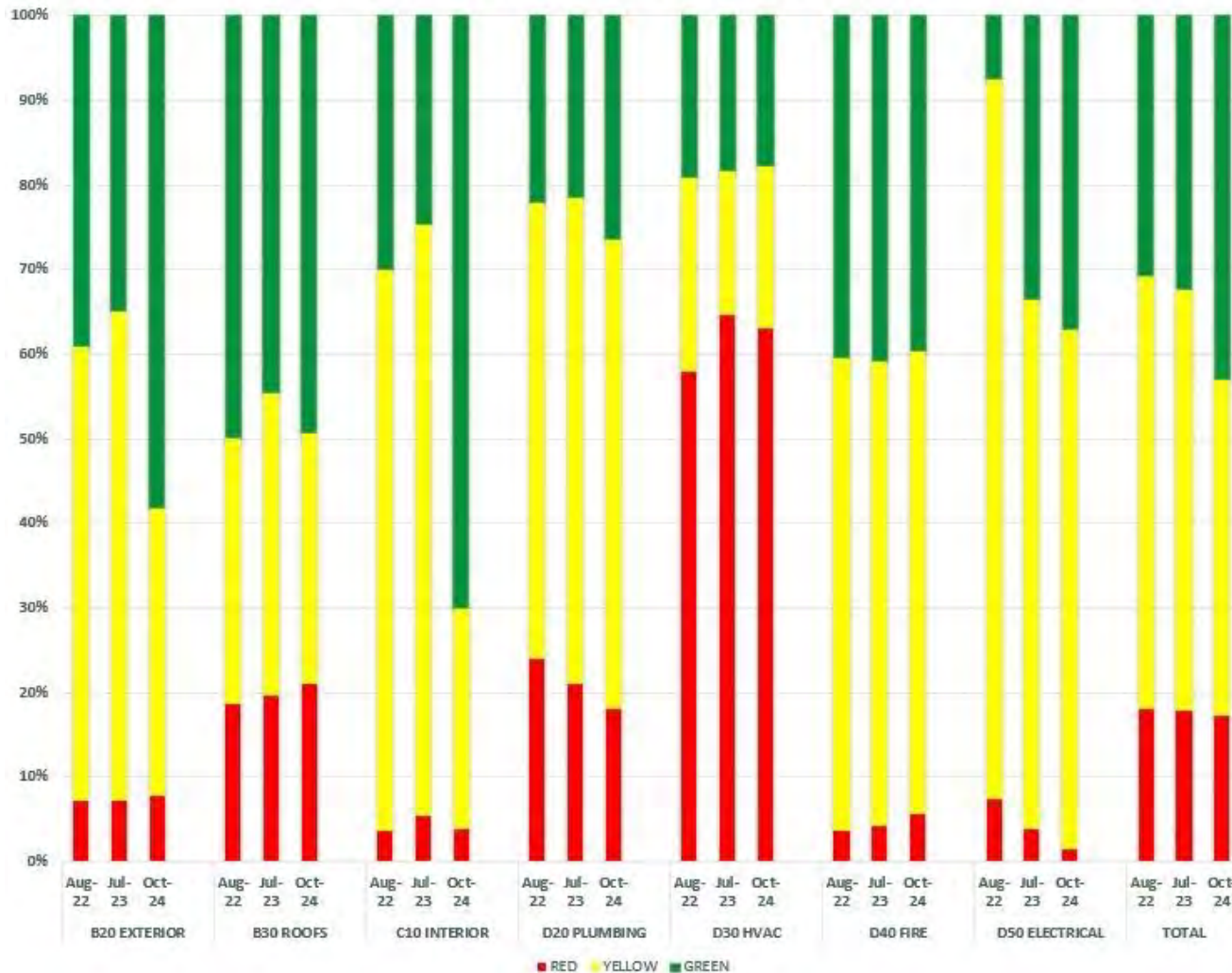


# Infrastructure Condition



*Fly, Fight, & Win*

KEY 7 SYSTEMS AT A GLANCE



## Takeaways:

- HVAC is biggest challenge
- Additional facilities changes condition breakdown each year
- Significant overall improvement



# AETC

## Infrastructure Health Assessment



*Fly, Fight, & Win*

### Infrastructure Investment Dashboard

COA: Baseline Model



BUILDER Data As Of: **June 2024**  
Dorms Inventory: **November 9, 2023**

Airfields Data As Of: **Sept 2023**  
Roads & Parking Data As Of: **Sept 2023**

Budget Source: **FY25 POM**  
Demo Source: **FY25 POM**

Focus Fund Group: **Dorms**  
Focus Fund Amount: **\$300M**



COA

baseline model

Year

2024

MAJCOM

AETC

Final Condition

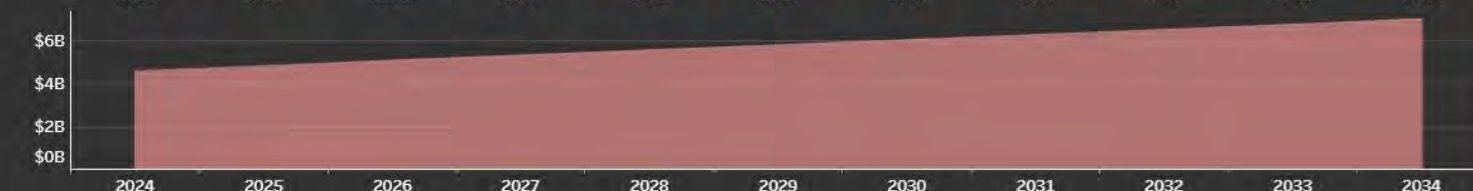
40.00 90.00

Costs

Recap MILCON Cost  
Replace Cost  
Repair Cost  
Demolition Cost

Starting Backlog: **\$5B**

Ending Backlog: **\$7B**



*Cave Tonitrum*



# Installation Health Assessment



*Fly, Fight, & Win*

- 54,000 AF facilities → 2,500 Luke AFB Facilities
- \$24B AF deferred mx → **\$396M** Luke AFB deferred mx
- **Installation Investment Strategy (I2S)**
  - AF commitment to increase annual funding to 2% plant replacement value
  - Today's deferred mx & recapitalization cost will triple in 30 years if funding remains status quo

Infrastructure outlook in 2018, 2023, 2033 & 2050

Current funding Levels

I2S funding Levels





# 56 CES 2035



*Fly, Fight, & Win*

## **CES Lines of Effort**

1. Resiliency & Readiness
  2. Infrastructure C2/Automation/Security
  3. Asset Visibility
  4. Teaming & Partnerships
- **Facility Operations**
    - Increase Industrial Control Systems capabilities [1,2]
    - Restore water production capability on south side of installation [1,2]
    - Establish Levels of Service to communicate risk to Luke AFB with CABS standup [1,3,4]
    - Expand Predictive Maintenance/Programming [3]
  - **Installation Development**
    - Robust in-house design capability [1,3]
    - Refresh Installation Development Plan to shape post F-35 Beddown [3,4]
    - Expand 3D facility and infrastructure scanning capabilities [3]
    - Revitalize Dorm quality of life
  - **Emergency Response and Management**
    - Build out AF Installation Common Operating Picture (C2IMERA, ATAK) [1]

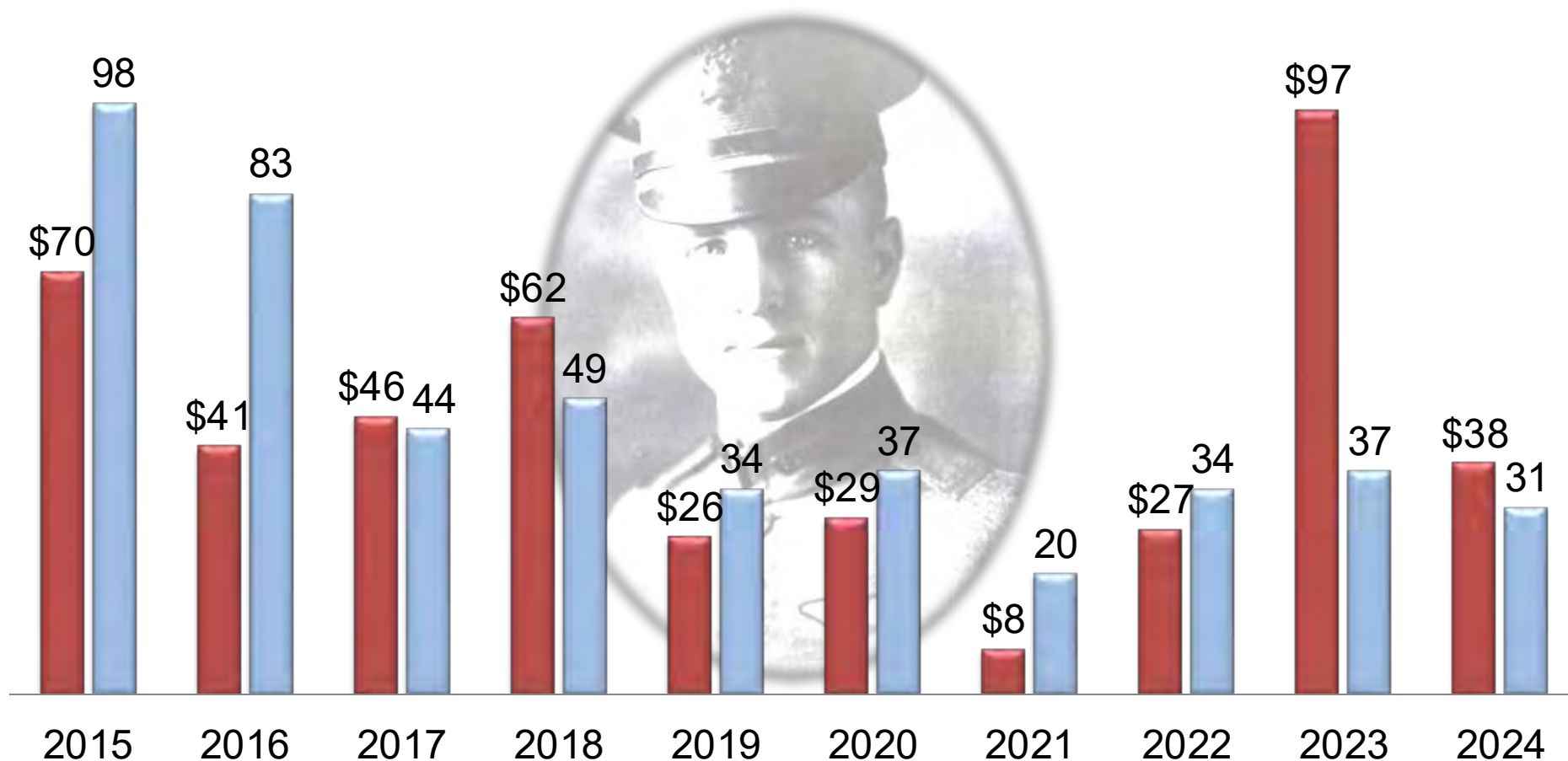


# Historical Project Execution



*Fly, Fight, & Win*

■ Executed in \$M   ■ # Projects



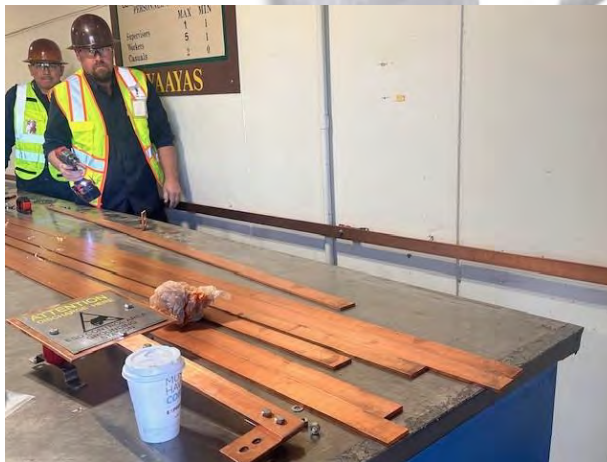


# FY24 Program Roll-up



*Fly, Fight, & Win*

- FY24: 31 Projects/\$38.3M
  - Add/Alt Egress Facility - \$4.9M
  - Repair Airfield Lighting System (GBAFAP) - \$11.9M
  - Replace Controls, Multi Facilities (26) - \$1.2M
  - MUNS Area Improvements - \$3M
  - Renovate B618 for Flight Simulators - \$5.7M
  - Repair Hangar Door, B408 - \$1.7M





# Future Program Projects



*Fly. Fight. & Win*

## ■ MILCON

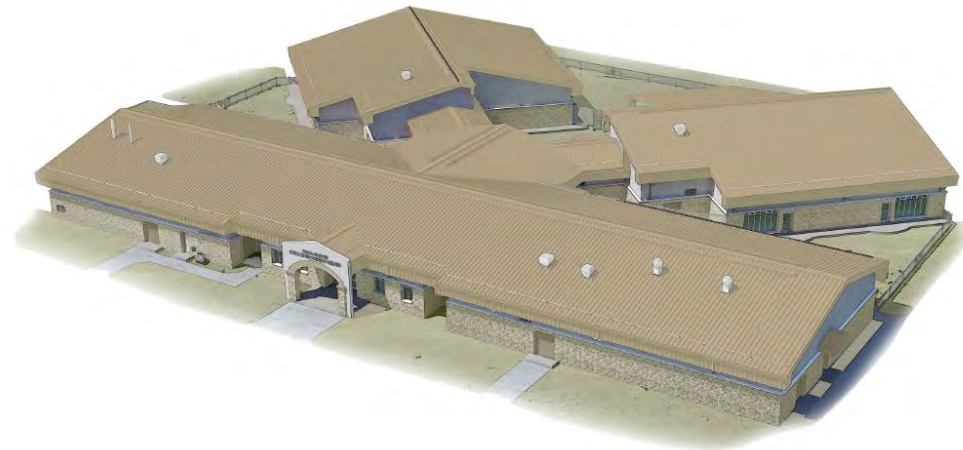
- Construct Child Development Center
- Control Tower/Fire Station/Base Ops Complex, Gila Bend
- Munitions Campus Demo Consolidation

## ■ Minor MILCON (UMMC)

- Construct North Turnaround, Gila Bend AFAF
- Construct MUNS Facility

## ■ Facility Sustainment (FSRM)

- Upgrade Water Infrastructure
- Renovate Dorm 530
- Repair Bldg 617



## ■ Other

- Micro Grid
- Make Ready Program – EV Charging for Gov't Vehicles
- DLA Government Vehicle Fueling Station (Contractor Owned/Operated)



# F-35 MILCON



*Fly, Fight, & Win*

Projects	Program Year	Amount (\$000)	Status
Academic Trng Ctr	FY11	49,584	Complete
Squad Ops #1	FY11	14,670	Complete
Add/Alter AMU #1	FY12		Complete
Squad Ops/AMU #2	FY12	12,904	Complete
Squad Ops/AMU #3	FY14	15,838	Complete
Field Training Det	FY14	4,700	Complete
Const Hangar #2	FY15	11,603	Complete
Flight Line Fillstands	FY15	13,097	Complete
Const Squad Ops/ AMU/Hangar #4	FY16	23,915	Complete
Const Munitions Build-up Pad	FY16	4,230	Complete
Const 6-Bay Maint Hangar #3	FY16	11,200	Complete
Fuel Offload Facility	FY16	4,710	Complete
Squad Ops/AMU #5	FY17	17,085	Complete
Alter Hangar For AMU #6	FY23	30,569	Under Construction
Const Squad Ops #6	FY23	21,833	Under Construction
<b>TOTAL</b>		<b>\$235,938</b>	<b>91% Complete</b>



Questions?

Luke Update



56<sup>th</sup> Contracting Squadron

# OVERVIEW

- About Me
- Small Business Program and Competition
- Doing Business with the Air Force
- Tips
- 56th Contracting Squadron Potential Opportunities
- Prime Contractor Information
- Strategic Contracts
- Small Business POCs



# ABOUT ME



# WHAT WE DO FOR THE 56<sup>TH</sup> FIGHTER WING >>>>>

## \$92M SPENT IN FY 2024

Of the \$92M, \$16.7M was awarded to Arizona small businesses, boosting the local economy.

## QUALITY ASSURANCE PROGRAM

Trained 27 Contracting Officer Representatives (CORs) managing 34 service contracts base wide.

## FAR/DFARS/DAFFARS (MAKE IT LEGAL)

When in doubt, CALL one of our 3 Flight Chiefs, 5 Team Leads, or any Contract Specialist! We will find the correct path forward.

## GOVERNMENT PURCHASE CARD

The 56 FW's \$17M GPC Program allows units to internalize just-in-time purchasing capabilities for supplies, services, & construction under the micro-purchase threshold.



# SMALL BUSINESS PROGRAM & COMPETITION >>>>>

---

MRS. MARY PEETZ, [mary.peetz@us.af.mil](mailto:mary.peetz@us.af.mil)

Small Business Professional (56 CONS/DBO) oversees programs and goals approved by 56 FW/CC and reported to SAF through AETC.

- Bottom Line: Small Businesses get a fair share of the FW "Spend".
- Everything \$250K or less is reserved for small business!
  - THIS INCLUDES GPC BUYS ABOVE THE MICRO-PURCHASE THRESHOLD!
- The Competition in Contracting Act (CICA) requires purchases to be competed to the maximum extent practicable.
- In FY24, 56 CONS did over \$60 in Small Business contract!



# DOING BUSINESS WITH THE AIR FORCE

## *Register in the government database*

- System for Award Management:

[www.sam.gov](http://www.sam.gov)

- Obtain a Unique Entity Identifier (UEI)
- Core data (Name, address, org type, financial information)
- Assertions (NAICS, size metrics)
- Reps & Certs (FAR questionnaire)
- SBA Dynamic Small Business Search



## TIPS!



- ✓ Watch [sam.gov](https://www.sam.gov), GSA e-buy or 56 Contracting Squadron FaceBook page for opportunities (sources sought, pre-solicitations, & solicitations)
- ✓ Be willing to compete
- ✓ Ensure you have the appropriate North American Industry Classification System (NAICS) for the services and products that you provide
- ✓ Keep your Small Business Dynamic Search information updated. Key words are important.
- ✓ Concise Capabilities Statement to market your company to capture core organic capability
- ✓ Read the entire solicitation & performance work statement
- ✓ Have employees that can meet strict base access requirements
- ✓ Attend site visits/pre-proposal conferences

# 56th Contracting Squadron

## Potential Opportunities >>>>>

### Construction IDIQs

- Paving IDIQ
- M&R IDIQ
- SABER IDIQ
- Architect & Engineering Services IDIQ (Expected FY26)
- Multiple Award Construction Contract (MACC) (Expected FY27)
- Davis Monthan (MACC) Subcontract opportunities
- SABER Subcontract opportunities

### Services

- Barry M Goldwater Range, subcontract opportunities



## Prime Contractor Information



- Gila Bend Aux Field & Barry Goldwater Range - Tunista Services LLC  
**Rick Carr (623) 810-5800 (expires 30 Sep 26)**
- Airfield/Base Paving IDIQ –MRM Construction Services Inc.  
**Marie Torres (602) 340-0378 (Expires 3 Jun 29)**
- Simplified Acquisition of Base Engineering Requirements (SABER) - Four Tribes Enterprises, LLC  
**Ray Tams (775) 450-0507 (expires 11 Jul 27)**
- Maintenance & Repair IDIQ (M&R) – Diversified Maintenance Systems Inc.  
**Andrew Umphries (801) 556-2179 (expires 2 Aug 26)**

## — Strategic Contracts —



### **Worldwide Engineering and Construction (WE&C)**

This program includes a of a full range of design, construction and engineering activities necessary to meet Air Force and other customer requirements at various Government installations.

### **Regional Engineering and Construction (RE&C) - West Region**

This program encompasses the full range of methods, technologies, and supporting activities necessary to conduct project construction at Air Force installations and other locations within the United States in accordance with technical and regulatory requirements.

### **Roofing Repair, Replacement & Maintenance (R3M)- Southwest**

The purpose of this program is to acquire commercial roof replacement, preventative maintenance, corrective repair, and inspection/testing services. The mandatory use is for USAF installations that are geographically located within the CONUS and Alaska.

## SMALL BUSINESS POCs >>>>>

Ms. Mary Peetz (SB Program Lead) –  
mary.peetz@us.af.mil

Lt Col Chris James (Commander) –  
christopher.james.10@us.af.mil

Mr. Chad LaValley (Infrastructure Flight  
Chief)  
chad.lavalley.1@us.af.mil



# THANK YOU!



**56TH CONTRACTING SQUADRON**  
**LUKE AFB, AZ**

