



# 628th Civil Engineer Squadron



20 Mar 2025



# Joint Base Charleston

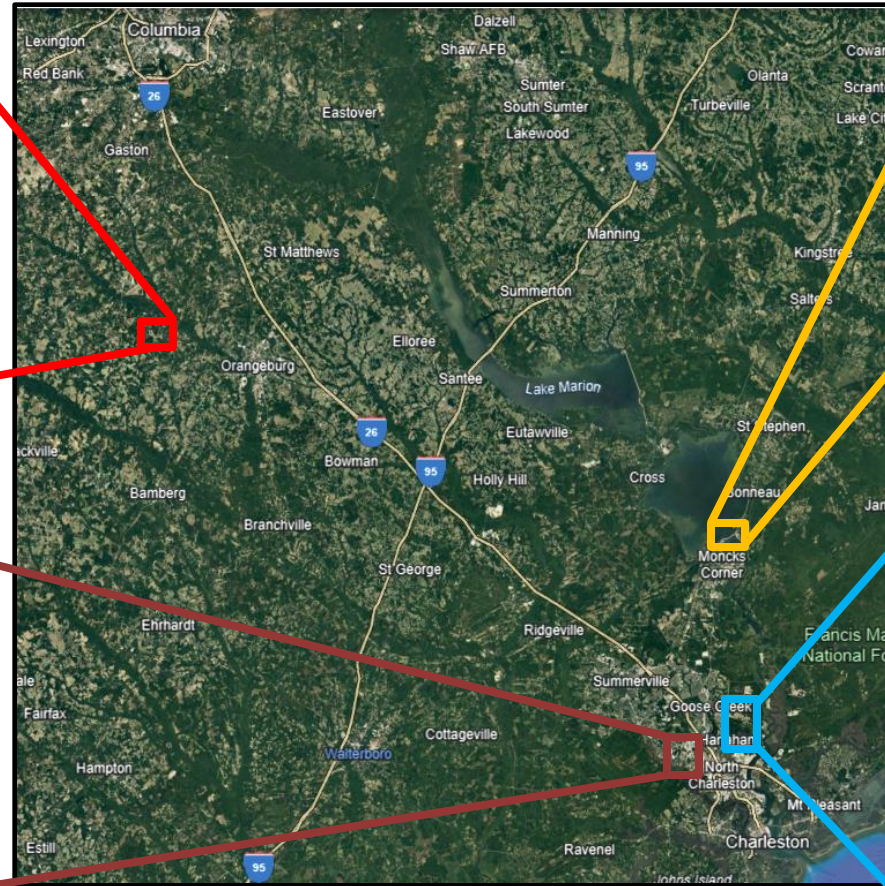


## Joint Base Scope

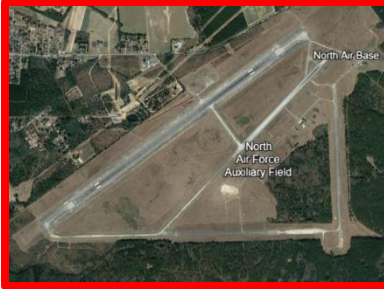
- 74 distinct organizations
- All branches of U.S. Military
- Total employees: ~20K

## Joint Base Scale

- Acreage: 22,184
- Miles of Shoreline: 22
- Population Supported: ~133K



**North Auxiliary Field**



**2,200+ acres**

**Short Stay Rec Area**



**61 acres**

**Air Base**



**3,200+ acres**

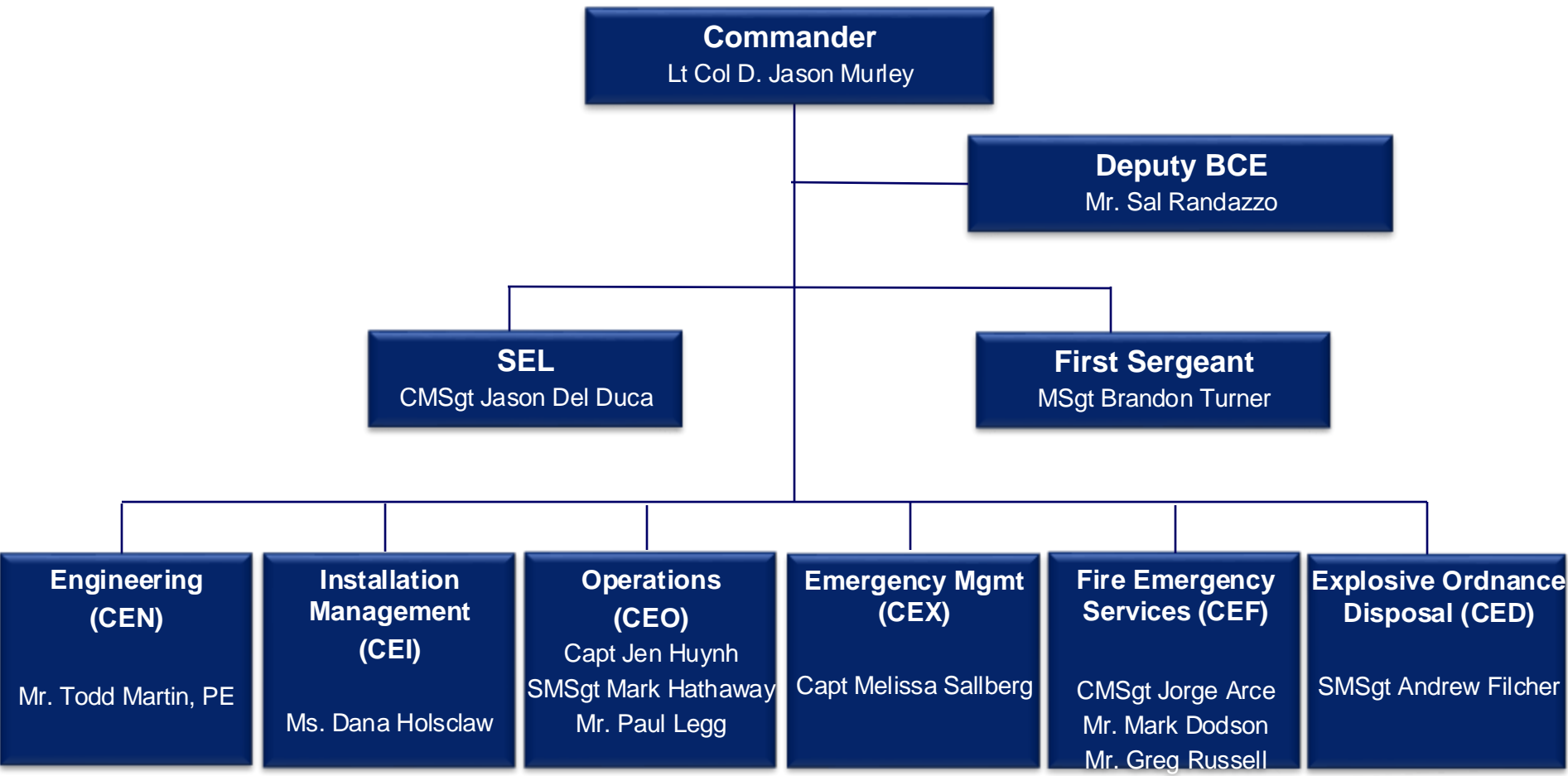
**Weapons Station**



**16,000+ acres**



# 628 CES Organization Chart





# 628 CES Overview



---

## MISSION

**Outlaw family provides and preserves facilities, infrastructure, and personnel to maintain responsive and effective global capabilities projected from Joint Base Charleston.**

---

## **Manpower**

- **542 Funded Authorizations (714 Total Positions)**
  - **~168 Validated but Unfunded Authorizations**
  - **~30-40 Transient Civilian Billets**
  - **~97% of Funded Positions are Manned Manning (73% if you include unfunded)**
- 

**Budget – \$47.9M → Need \$84.3M to Operate Installation**

- **4-6% M&R → World Class Facilities (e.g. Major University)**
- **2% M&R → Minimum Funding for Adequate Facilities**



# Readiness



- **628 CES builds, operates, maintains, protects, and recovers airfields in any contingency environment**





# Explosive Ordnance Disposal



- **23 EOD Technicians**
  - **Shop & Range at Weapons Station**
- **Functions**
  - **Airfield/Hot Cargo Support**
  - **Mutual Aid / MMR Program**
  - **VIPPSA**
  - **Cooper River Dredging Support**
  - **Airfield Recovery after Attack**





# Fire & Emergency Services



- **7 Stations / ~150 Firefighters**
  - **Station 1, 2: Air Base**
  - **Station 3: North Field**
  - **Station 4-7: Weapons Station**
- **Functions**
  - **Fire Prevention**
  - **Crash/Rescue**
  - **Shipboard Firefighting**
  - **Structural**
  - **Medical Support**





# Installation Management



- **Privatized Housing**
  - Air Base: Hunt Military Communities – 599 Homes
  - Weapons Station: Balfour Beatty Communities – 1,017 homes
  
- **Dorms**
  - Air Base: 520 rooms
  - Weapons Station: 2,210 rooms
  
- **Environmental Compliance**
  
- **Real Property**
  - Earn sustainment funds from maintaining accurate records







# Readiness & Emergency Management



- Engineer Readiness Training
- CBRN Detection / Response
- CBRN Training
- EOC Management / Exercise preparation





# Operations



- **Maintain Mission Critical Assets**
  - JB Charleston Airfield
  - Navy Wharf / Piers
  - North Field
  
- **Operate / Maintain Critical Base Infrastructure**
  - High Voltage Power
  - Water
  - Sewer
  - Central HVAC Plants
  
- **Facility Support**
  - Preventative Maintenance
  - Work Requests
  
- **Service Contracts**

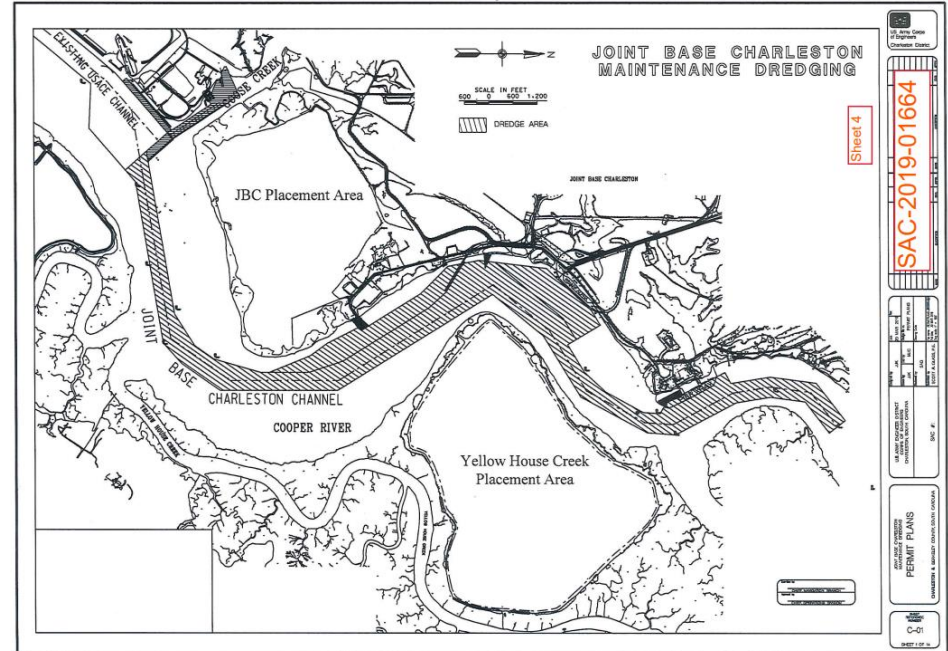




# Engineering



- **Project Planning / Advocacy**
  - 500+ Projects on IPL worth \$1.26B
  - Diverse Fund Streams
  - Project & Space Prioritization
  - Community Planning
- **Project Execution**
  - 72 active construction projects / \$600M+
  - GIS / Surveying / Mapping





# Community Partnerships



- **North Yard / NIWC Facilities / City of North Charleston**
- **Dorchester Road Widening / Charleston County**
- **Palmetto Commerce Parkway / Charleston County**
- **Major Contributor to Fire Department Mutual Aid**
- **Short Stay Sewer System / Berkeley County**
- **Regional LiDAR Partnership / Multiple Counties**
- **Shipboard Fire Trainer / Multiple Partners**
- **Microgrid / Charleston County / Dominion / Santee Cooper**
- **Unmanned Aircraft Systems (UAS) / Charleston County**



---

# Questions?