

# ***Pacific Air Forces Regional Support Center***

---



## **Mission Brief**

**27 February 2025**

**Colonel Tim “Steiner” Meerstein**

***Eyes of the Kill Chain***

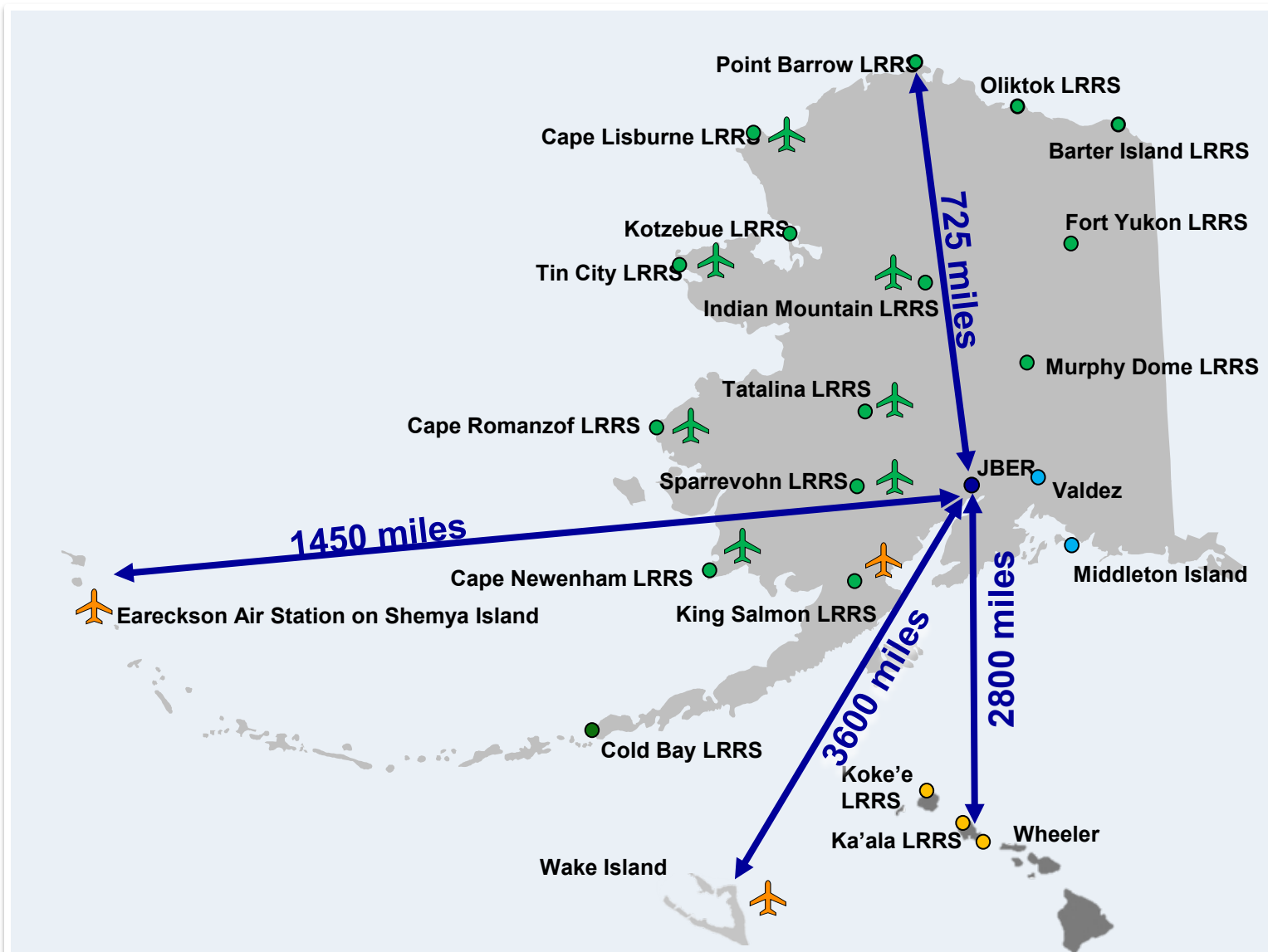


UNCLASSIFIED

# ***Pacific Air Forces Regional Support Center***

**Mission:** Provide Base Operating Support to strategic outposts, facilitating civil aviation, homeland defense, and forward power projection across Alaska and the Indo-Pacific theater.

**Vision:** To be the premier team of professionals, empowering civil and military agencies across the spectrum of competition to conflict.



Complex and most widespread Group across a “cumulative base” in Pacific Air Forces



# Who we are: PRSC



11th Air Force



PACAF Regional Support Center  
Support Staff



611th Air Support Sq  
Joint Base Elmendorf-Richardson



611th Civil Engineer Sq  
Joint Base Elmendorf-Richardson



611th Air Communications Sq  
Joint Base Elmendorf-Richardson



Detachment 1  
Wake Island Airfield



Detachment 1  
Eareckson Air Station

## Eyes of the Kill Chain!



UNCLASSIFIED

# ***Where we focus: Our Priorities***

1. Support and enable our national, strategic assets at Eareckson Air Station
2. Operate and maintain Long Range Radar Sites across Alaska
3. Employ depot-level maintenance for PACAF's Aircraft Arresting Systems
4. Maintain Divert Airfields (Wake Island Airfield, Eareckson Air Station, King Salmon Air Station)
5. Provide installation Support for Hawaiian Air Defense



**Workforce on the road 6,000 days per year dispersed among 21 sites**



**Power projection platform for Indo-Pacific | Homeland Defense for NORAD-USNORTHCOM**

UNCLASSIFIED





UNCLASSIFIED

# ***What we do: Aerospace Warning & Control***



**Radar Sites**



**Air Operations Center**



**Radar Picture**



**Successful Intercept**

UNCLASSIFIED



UNCLASSIFIED

# ***What we do: Power Projection Platforms***

**Rapid U.S. Army HIMARS deployment to Eareckson**



**Military Readiness Exercises at King Salmon Air Station**



**U.S. Navy use of Wake Island for refueling ops**

UNCLASSIFIED



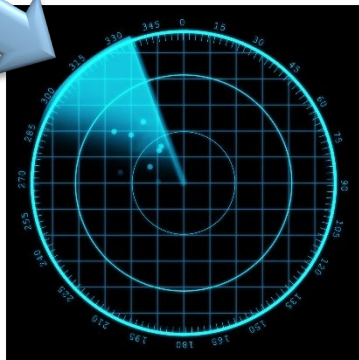


UNCLASSIFIED

# ***What we do: Federal Aviation Authority Support***



**Radar Sites**



**Radar Picture**



**FAA Ops Floor**



**Safe Commercial Flying Ops**

UNCLASSIFIED



UNCLASSIFIED

## *How we do it: Program Focal Areas*

- Strategic investment in aged infrastructure
  - Average Site Age = 71 years old
  - Co-located sites (radar & Basic Life Support) are locatable “train sites”
- Mitigations for wildlife at remote sites
  - Wildlife varies from whales, to walruses, to polar bears
- Considerations to reduce environmental impacts
- Community Partnership
  - Tribal engagements ensure the community continues to support sustained operations



UNCLASSIFIED

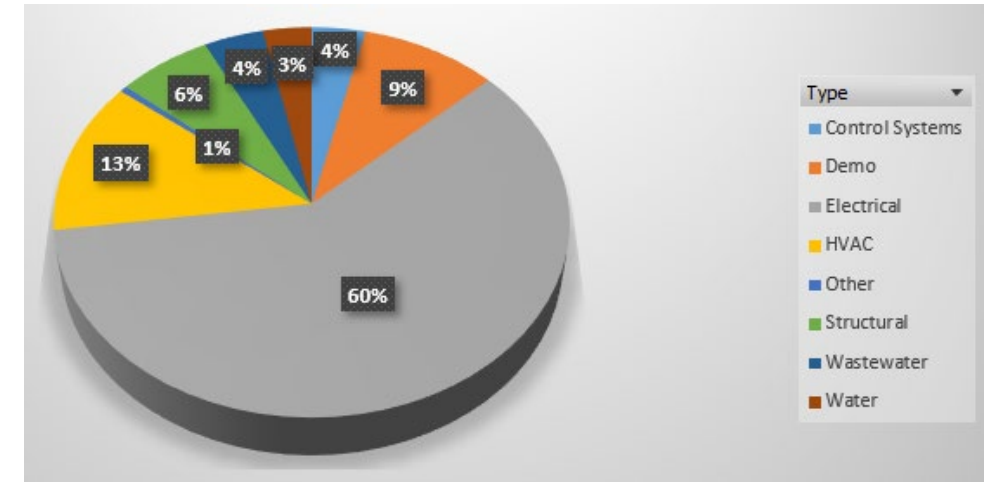
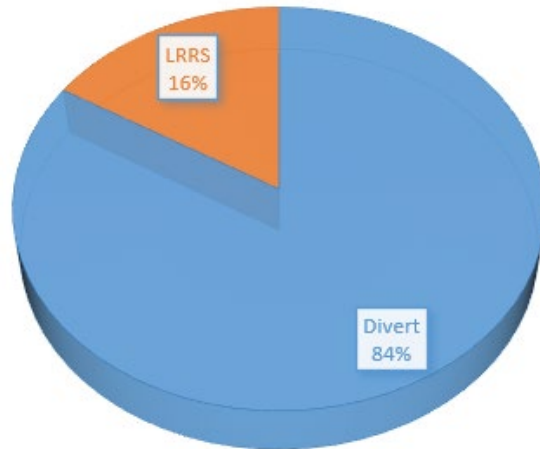




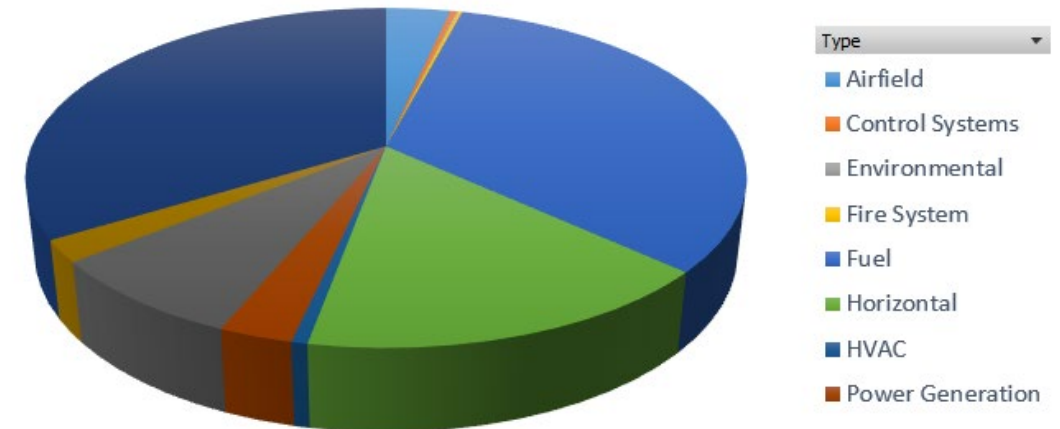
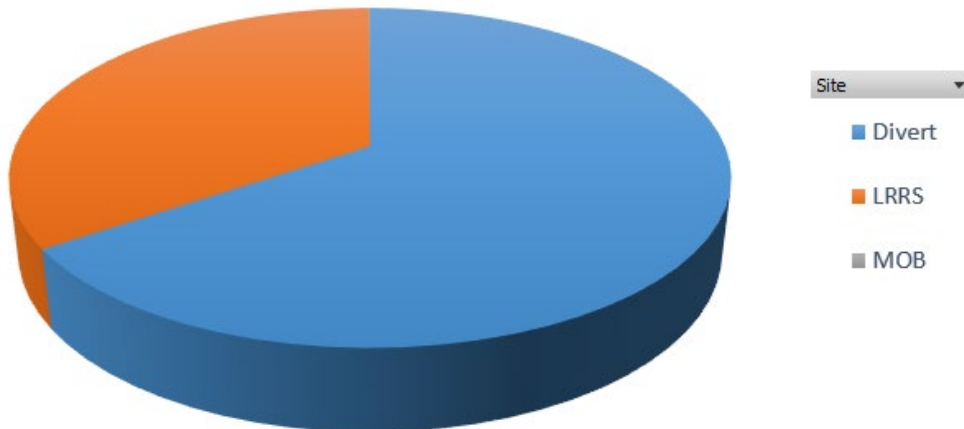
UNCLASSIFIED

# Strategic Construction Investment

FY24 – Completed \$67.5M



FY24 – Awarded \$222.4M



UNCLASSIFIED





UNCLASSIFIED

# Long Range Radar Sites *Wildlife Impacts*



**Whale washed up near gravel air strip (contractor buried)**



**Walrus washed up near air strip**

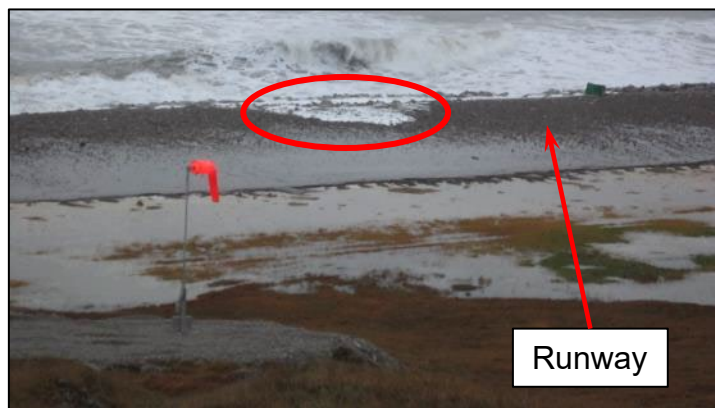
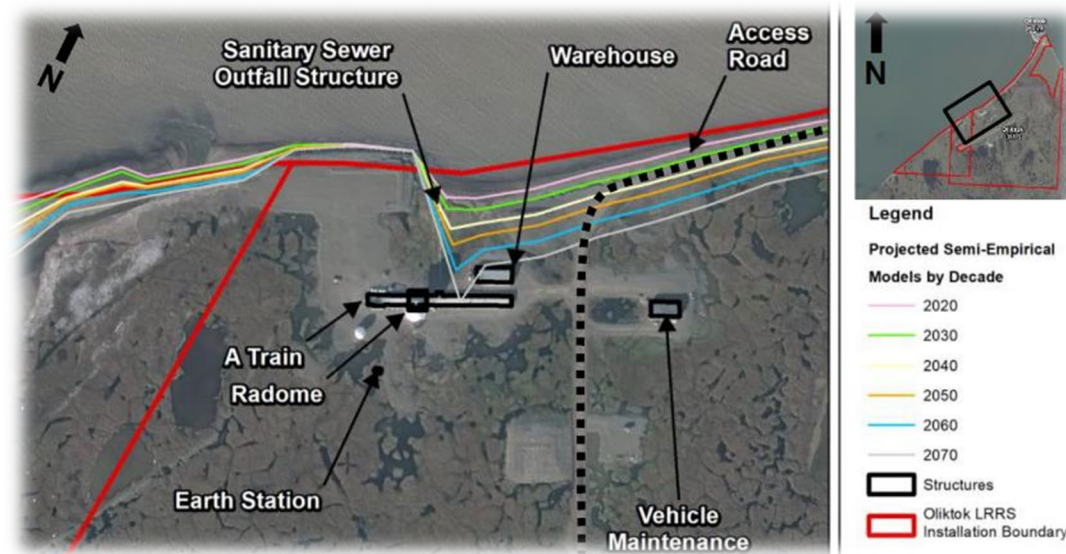
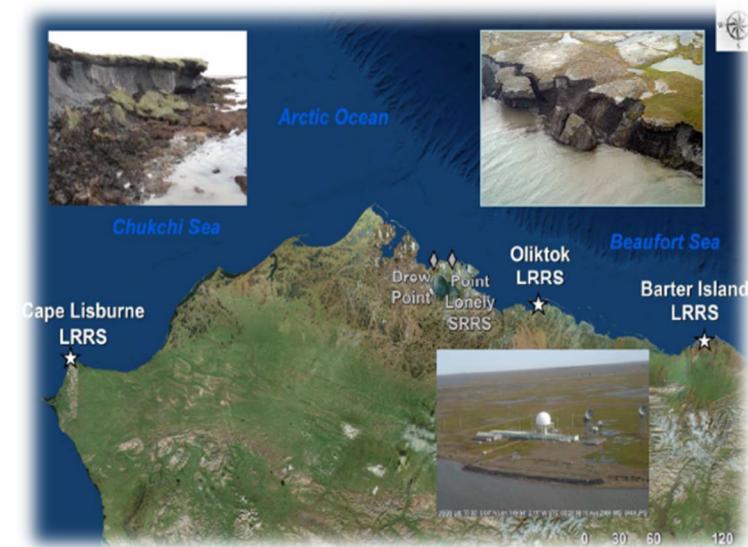
UNCLASSIFIED





UNCLASSIFIED

# Long Range Radar Sites Environmental Impacts



**Coastal Erosion Rapidly Overshooting Projections & Storm Events Threatening Weapon Systems & Critical Infrastructure**

UNCLASSIFIED





UNCLASSIFIED

# **Eareckson Air Station** ***Environmental Impacts***



UNCLASSIFIED





UNCLASSIFIED

# **Murphy Dome Long Range Radar Site** **Environmental Impacts**



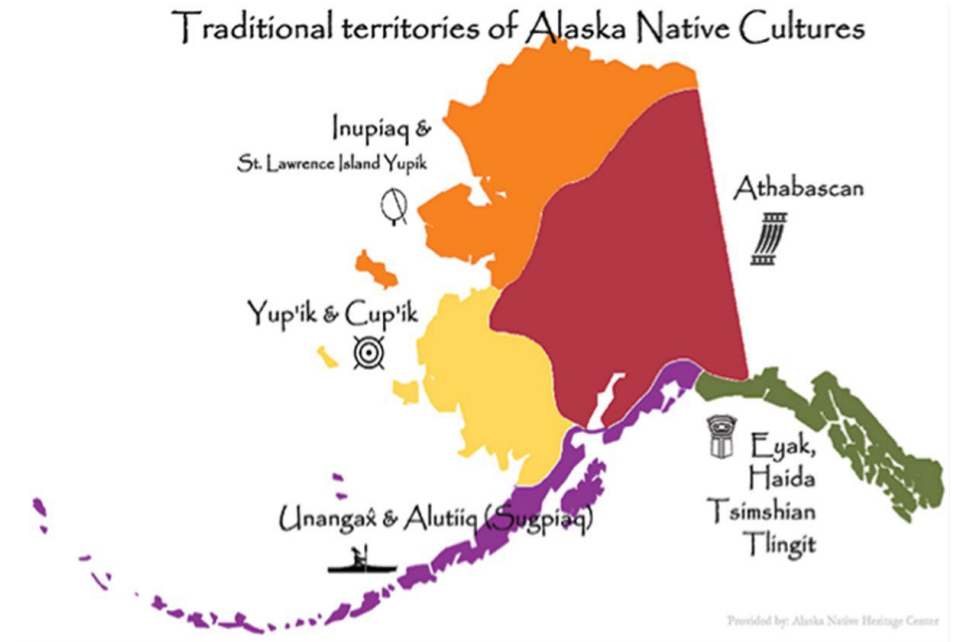
UNCLASSIFIED



UNCLASSIFIED

# Community Partnership

- 60 of the 229 Alaska Native Tribes
- ~80 Alaska Native Corporations and 12 of the ANCSA regional corporations
- 60+ village corporations
- 5 distinct cultures and 20 different languages



Our partnership with the Alaska Native Tribal Community is key to homeland defense.

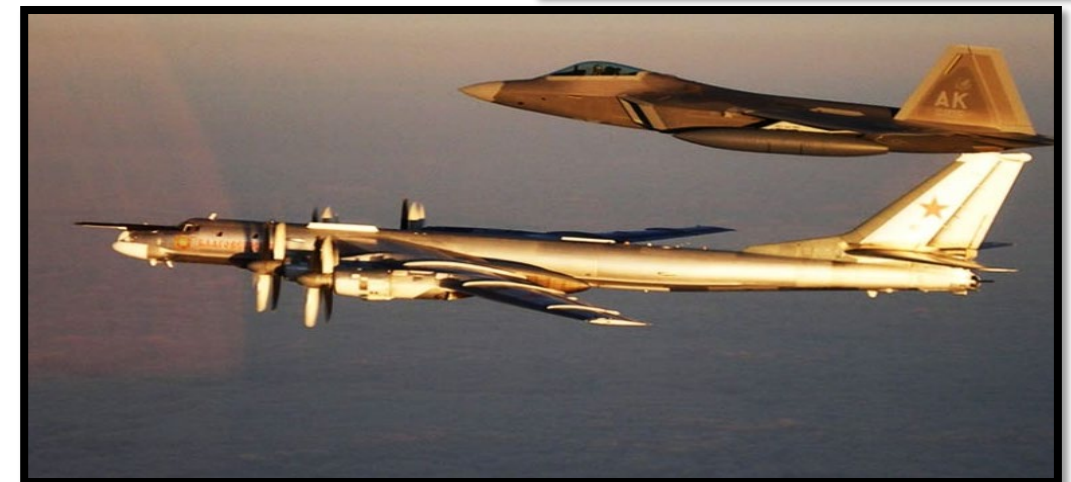
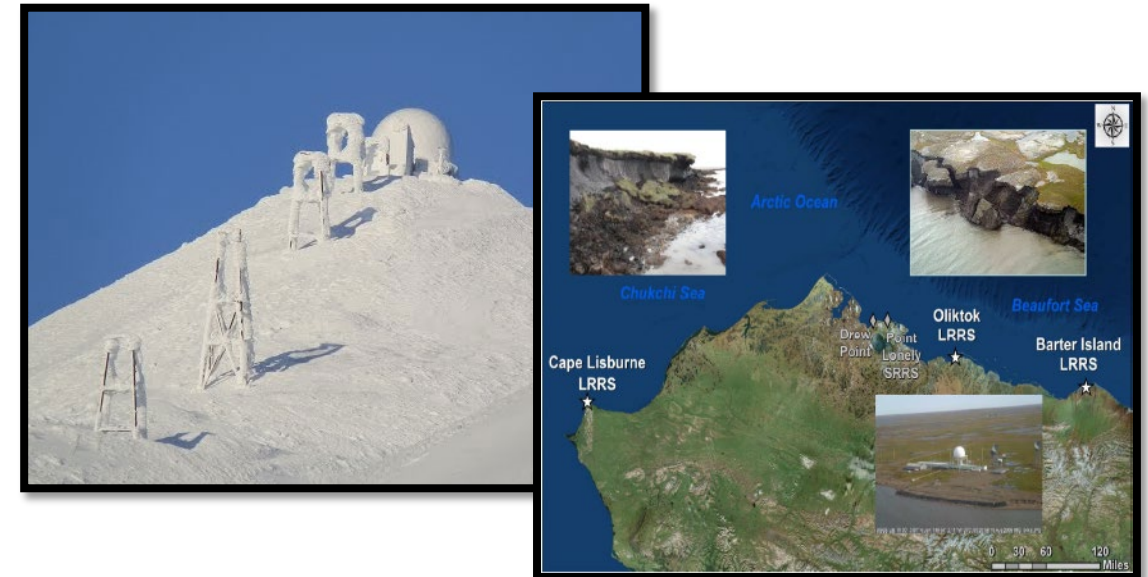




UNCLASSIFIED

# Key Takeaways

- Public-Private Partnership: Key to Success
- Base Operations Support
- Sustain, restore, and modernize facilities and infrastructure
- Wildlife impacts
- Environmental impacts
- Climate change
- Opportunity: Leverage commercial best practices



UNCLASSIFIED





PRSC...Eyes of the Kill Chain!