

TECH PORT *SAN ANTONIO*

BUILDING
FUTURES

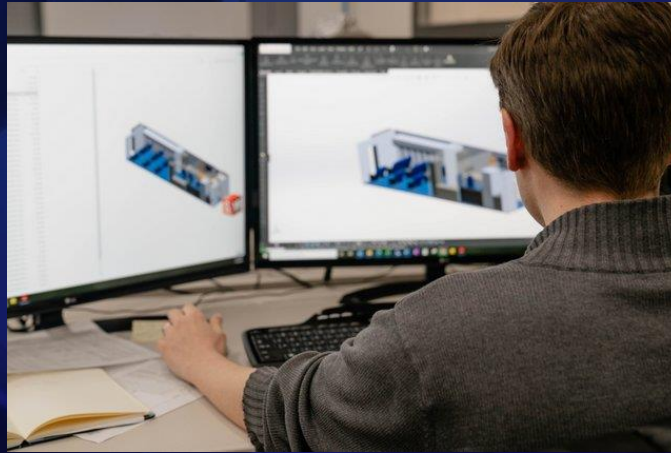
PRESENTED BY





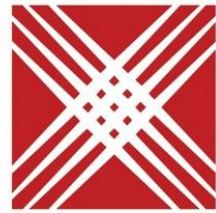


18,000 CAREERS FOR FAMILIES ACROSS OUR REGION



NEW JOBS SINCE 2017

9,100+



**ASSOCIATION OF
UNIVERSITY
RESEARCH
PARKS**

Creating Communities of Innovation



SAN ANTONIO **Report**

NONPROFIT JOURNALISM FOR AN INFORMED COMMUNITY

As Port SA refines its ambitious vision for a world-class innovation campus, a new award adds validation

By Tracy Idell Hamilton
November 14, 2024





**COMPASS ROSE
INGENUITY**
Home of the Cardinals

COMPASS ROSE PUBLIC SCHOOLS

LILLY MITCHELL BLVD.

COMPASS ROSE
INGENUITY



Welcome to
BOEING
CENTER
AT TECH PORT

BOEING
CENTER
AT TECH PORT

Let's
Take
Flight

BOEING
CENTER
AT TECH PORT

Welcome to **BOEING**
CENTER
AT TECH PORT

BOEING
CENTER
AT TECH PORT

BOEING
CENTER
AT TECH PORT





Joint Base San Antonio CAREER SUMMIT

CAREER
SUMMIT

Hiring Our
Heroes

CAREER
SUMMIT

Hiring Our
Heroes

CAREER
SUMMIT

HiringOurHeroes.org



HiringOurHeroes.org



HiringOurHeroes.org

Hiring Our
Heroes

CAREER
SUMMIT

Hiring Our
Heroes

CAREER
SUMMIT

Hiring Our
Heroes



HiringOurHeroes.org



HiringOurHeroes.org



Hiring Our Heroes

#JBSASUMMIT



Hiring Our Heroes

#JBSASUMMIT



STUDENTS BUILDING THEIR FUTURES



200,000+

AND COUNTING





SAMSAT Mission Control

SAMSAT

SWAT

CYBER SECURITY

Why is Wireshark such a popular tool?





EMU-Spacewalk

When astronauts exit a spacecraft to do a spacewalk, it's technically called an EMU. EMUs stand for extravehicular mobility units. Astronauts are a spacecraft wear a spacesuit for this and technically called an Extravehicular Mobility Unit (EMU).

During the Space Shuttle Program, astronauts performed spacewalks to repair satellites, test equipment, conduct experiments, and assemble the International Space Station.

EMUs are made in various sizes that are adjusted for each astronaut. The right fit is important because spacesuits can last up to eight hours and can be physically taxing.

KELLY
—HERITAGE—
FOUNDATION

\$1,000,000

FUNDING FOR INNOVATIVE PROGRAMS
SINCE 2023





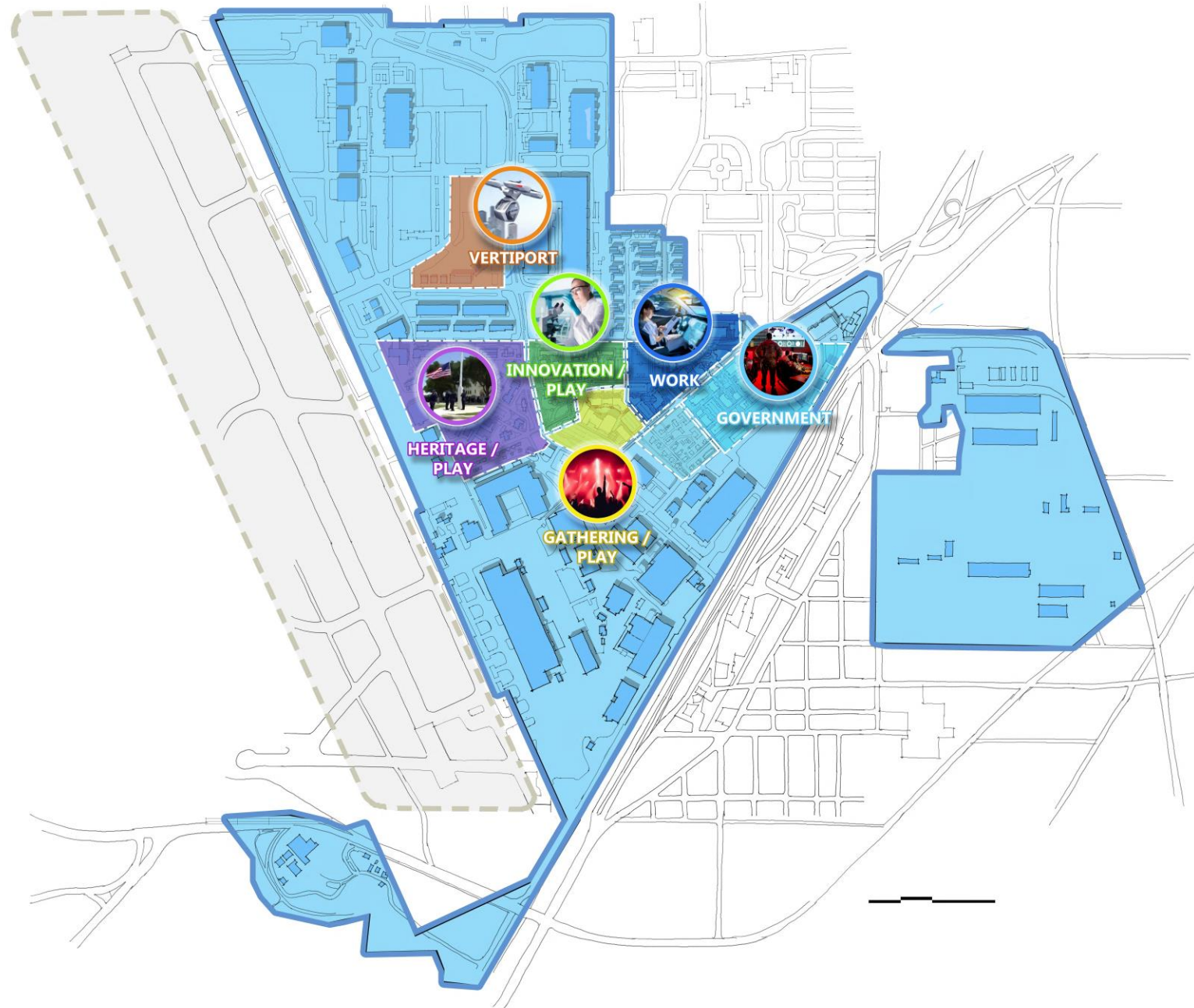


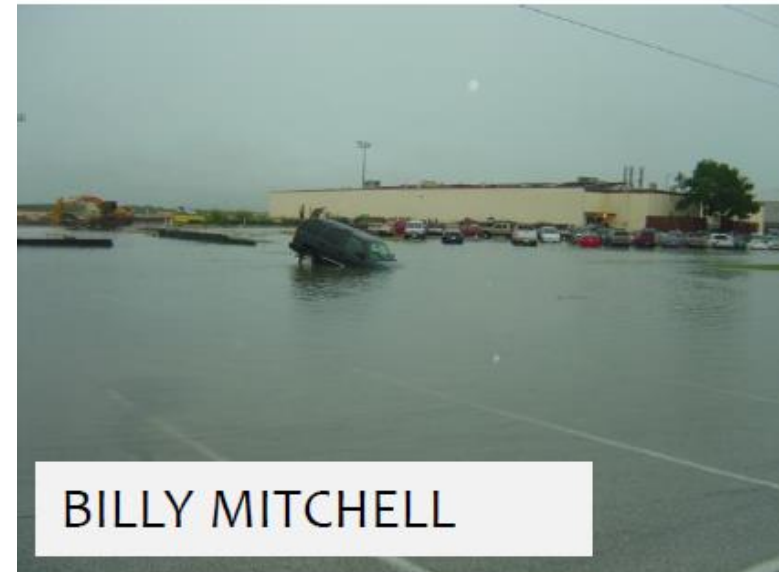
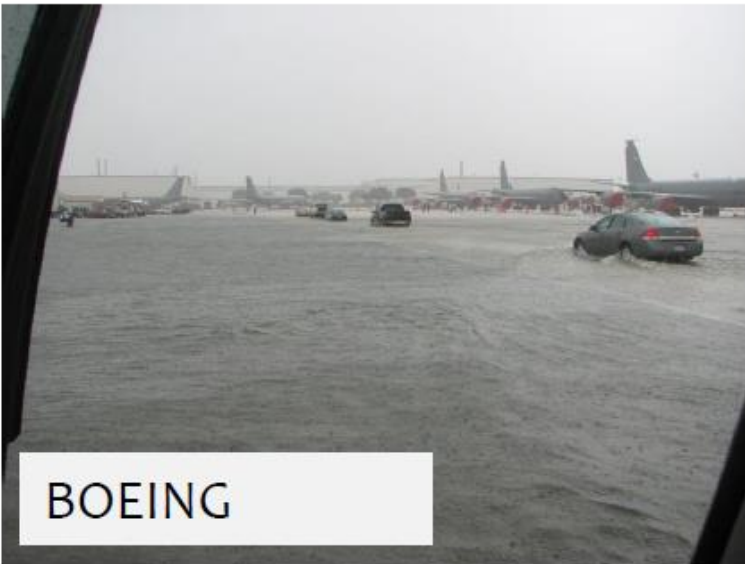
TECH PORT

CONNECT people to opportunity.

CONNECT employers to educators.

CONNECT buyers and sellers.





PROPOSED CONSTRUCTION PHASING PLAN

- PHASE IIIA: FROM CROCKETT ST TO UPSTREAM UNIT. THIS EXISTING PORTION WAS DESIGNED BY CEC ENGINEERS.
- PHASE IIIB: FULL DEVELOPMENT OF THE CHANNEL FROM CROCKETT ST TO DUNCAN RD
- PHASE IV: FULL DEVELOPMENT OF THE CHANNEL FROM DUNCAN RD TO BERMAN RD. AND ALONG BERMAN RD TO THE EXISTING CONCRETE CHANNEL.
- PHASE V: FULL DEVELOPMENT OF THE EXISTING CONCRETE CHANNEL TO THE ULTIMATE CONCRETE CHANNEL ALL THE WAY TO LEON CREEK.

NOTES:
COSTS ARE BASED ON CITY OF SAN ANTONIO AND TSDOT UNIT PRICES AS OF JANUARY 2008

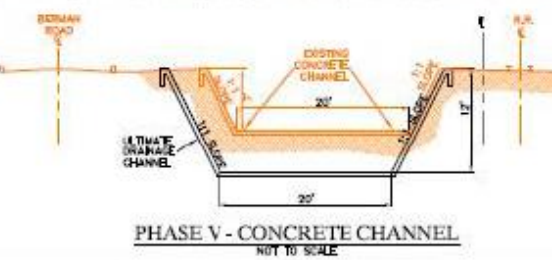
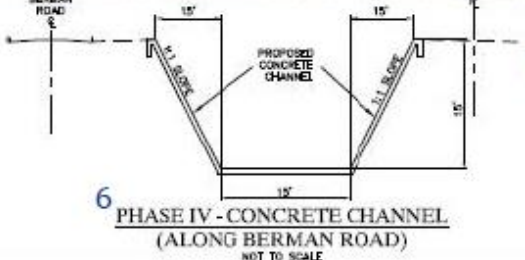
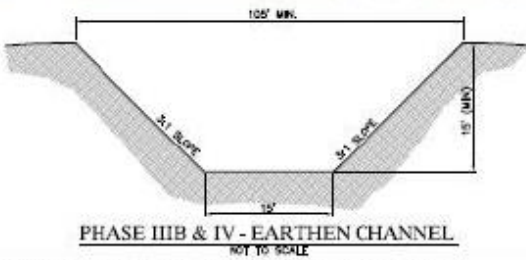
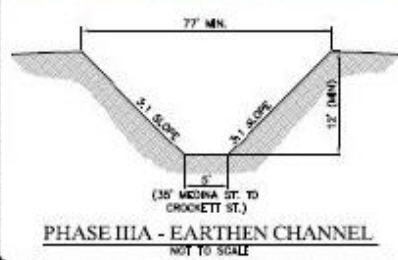
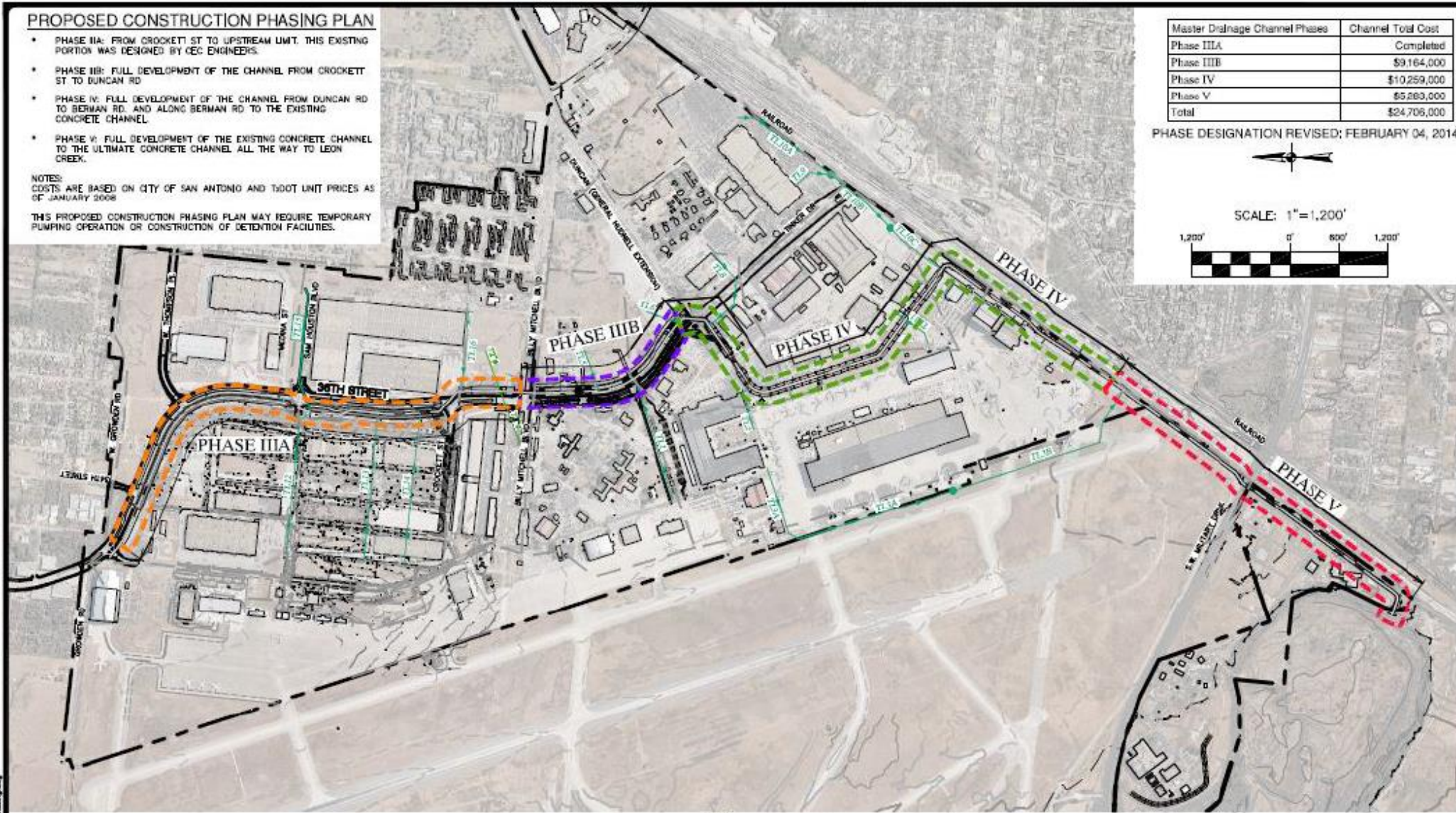
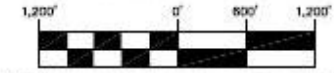
THIS PROPOSED CONSTRUCTION PHASING PLAN MAY REQUIRE TEMPORARY PUMPING OPERATION OR CONSTRUCTION OF DETENTION FACILITIES.

Master Drainage Channel Phases	Channel Total Cost
Phase IIIA	Completed
Phase IIIB	\$9,164,000
Phase IV	\$10,259,000
Phase V	\$5,293,000
Total	\$24,706,000

PHASE DESIGNATION REVISED; FEBRUARY 04, 2014



SCALE: 1"=1,200'

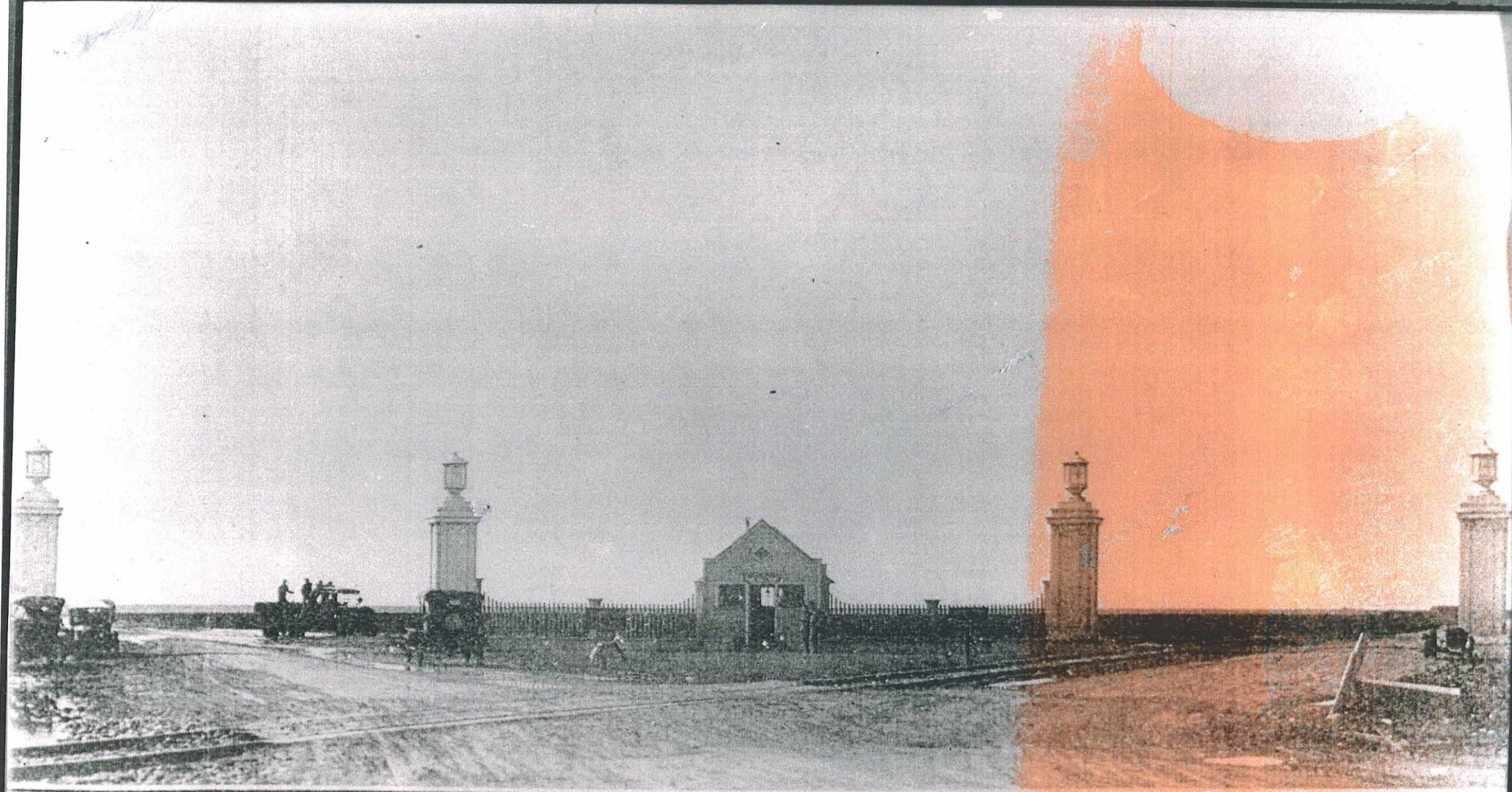


PORT SAN ANTONIO MAIN CONVEYANCE CHANNEL ULTIMATE PHASING EXHIBIT

JOB NO. 6725-31
DATE FEB. 2014
DESIGNER DM
CHECKED DM
DRAWN JF
SHEET 1

**PAPE-DAWSON
ENGINEERS**

PAPE-DAWSON ENGINEERS
100 EAST RIVER ST. SUITE 200
SAN ANTONIO, TEXAS 78205
PHONE: 214.225.1234
FAX: 214.225.1235
WWW.PAPE-DAWSON.COM



ENTRANCE TO KELLY FIELD — (THERE IS NO EXIT)

1917

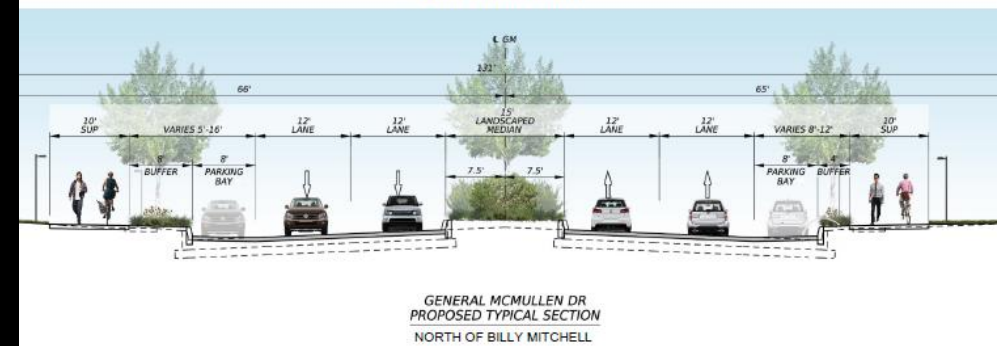
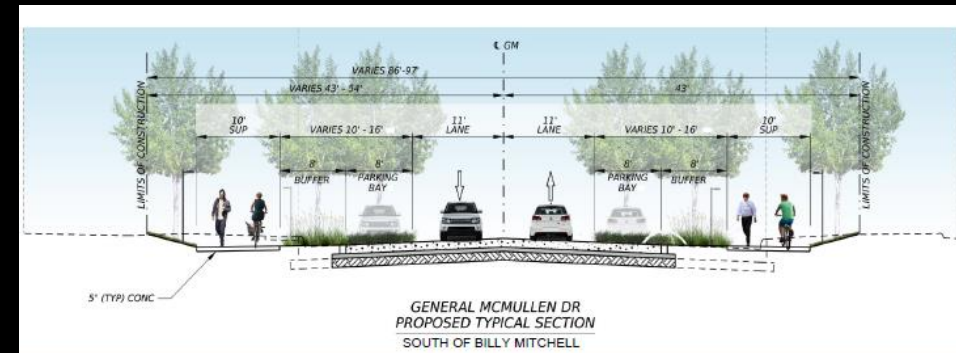
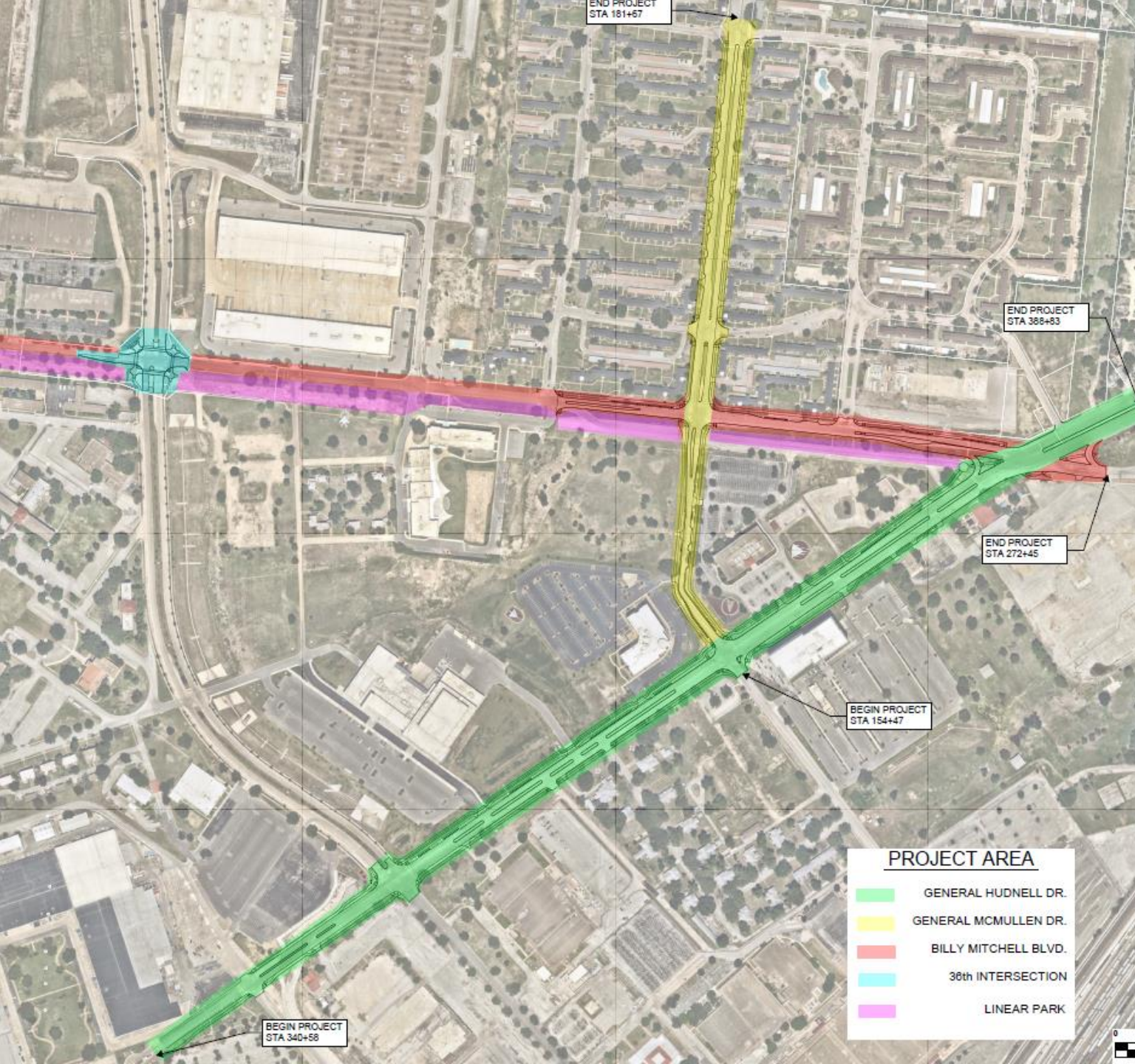


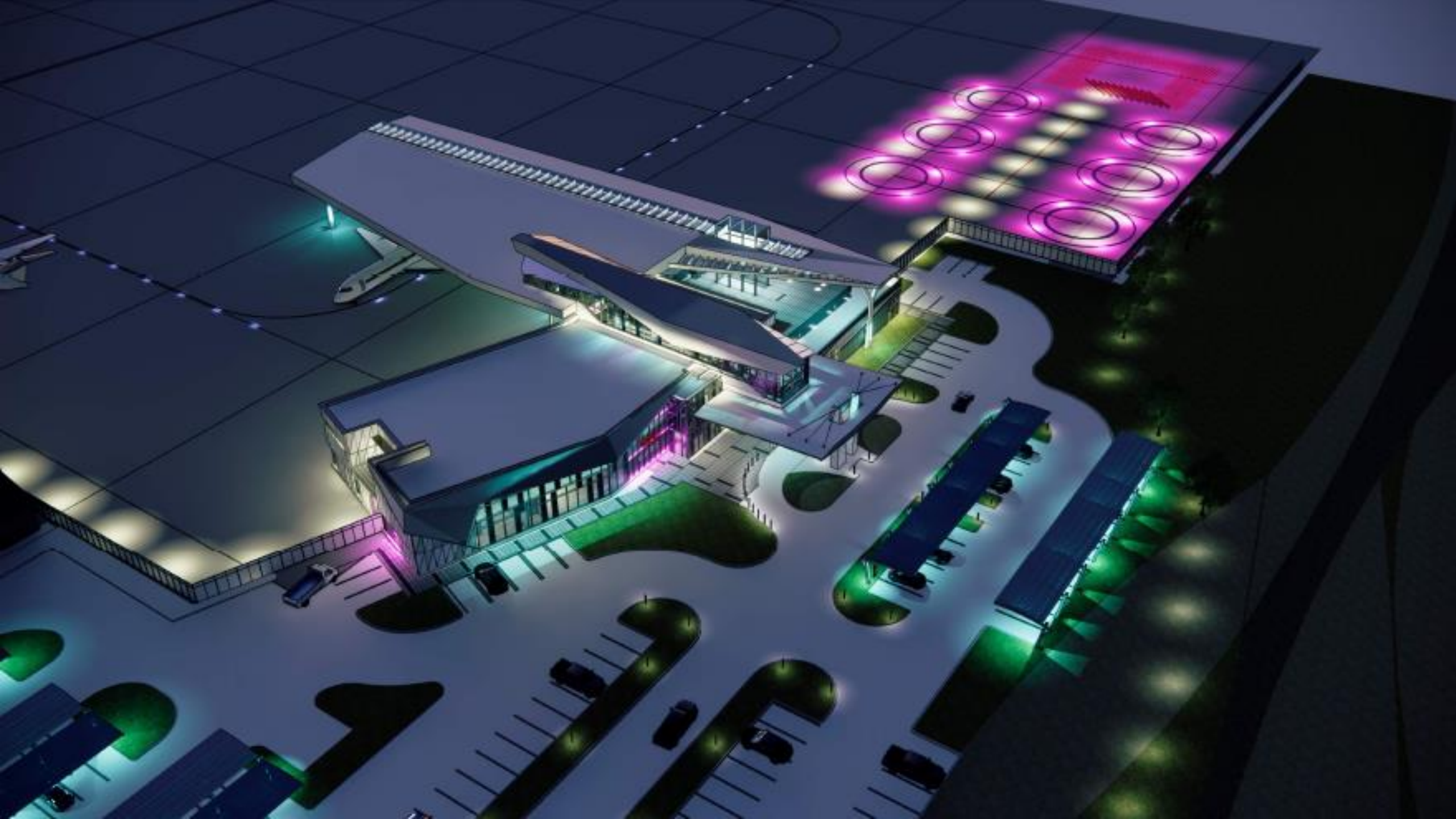
**To US-90 / TX 151
North & West San Antonio / Sea World**

**To US-90, IH 35, IH 10 & IH 37
Downtown San Antonio**

Kelly Field







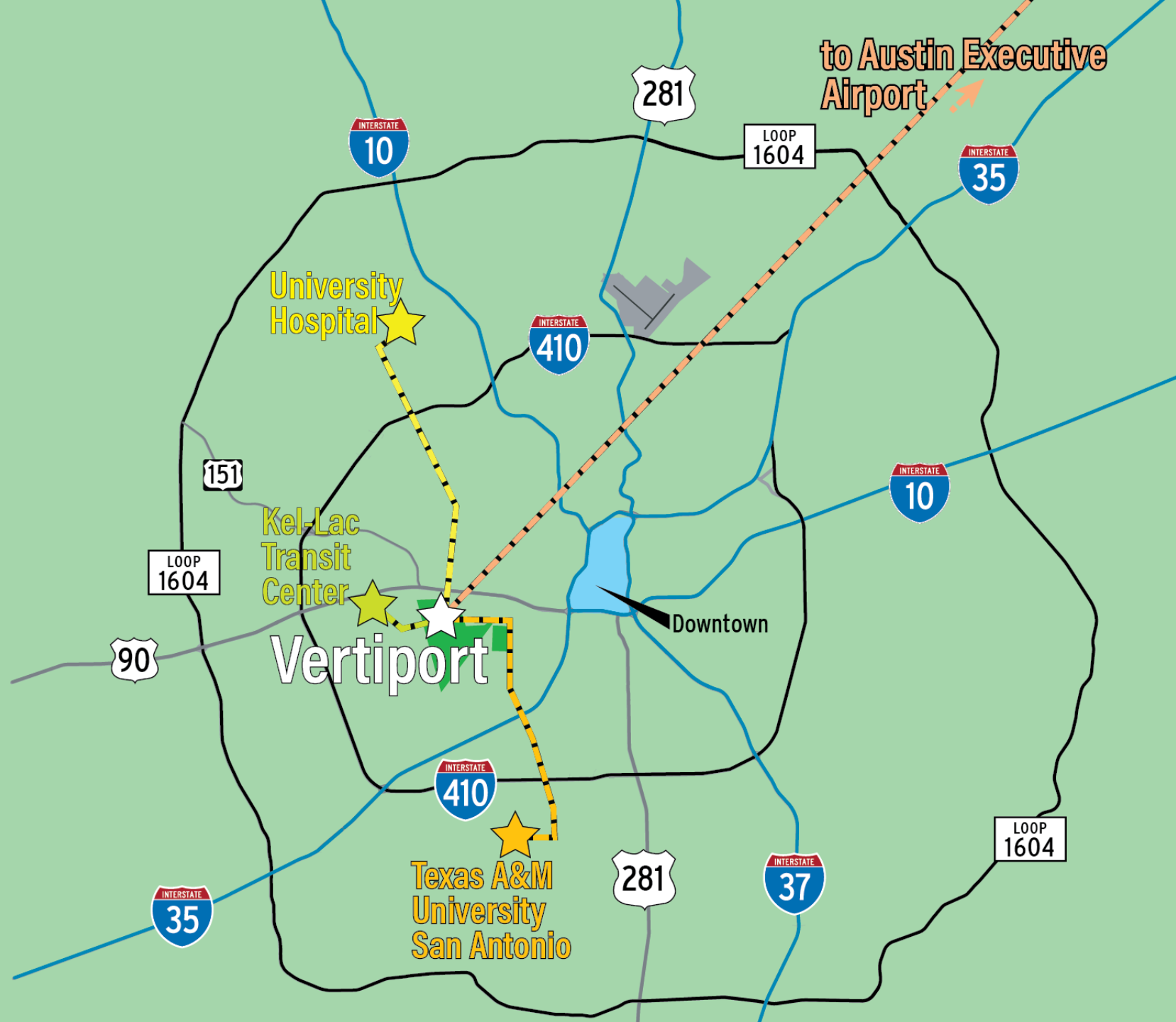


ELROY AIR

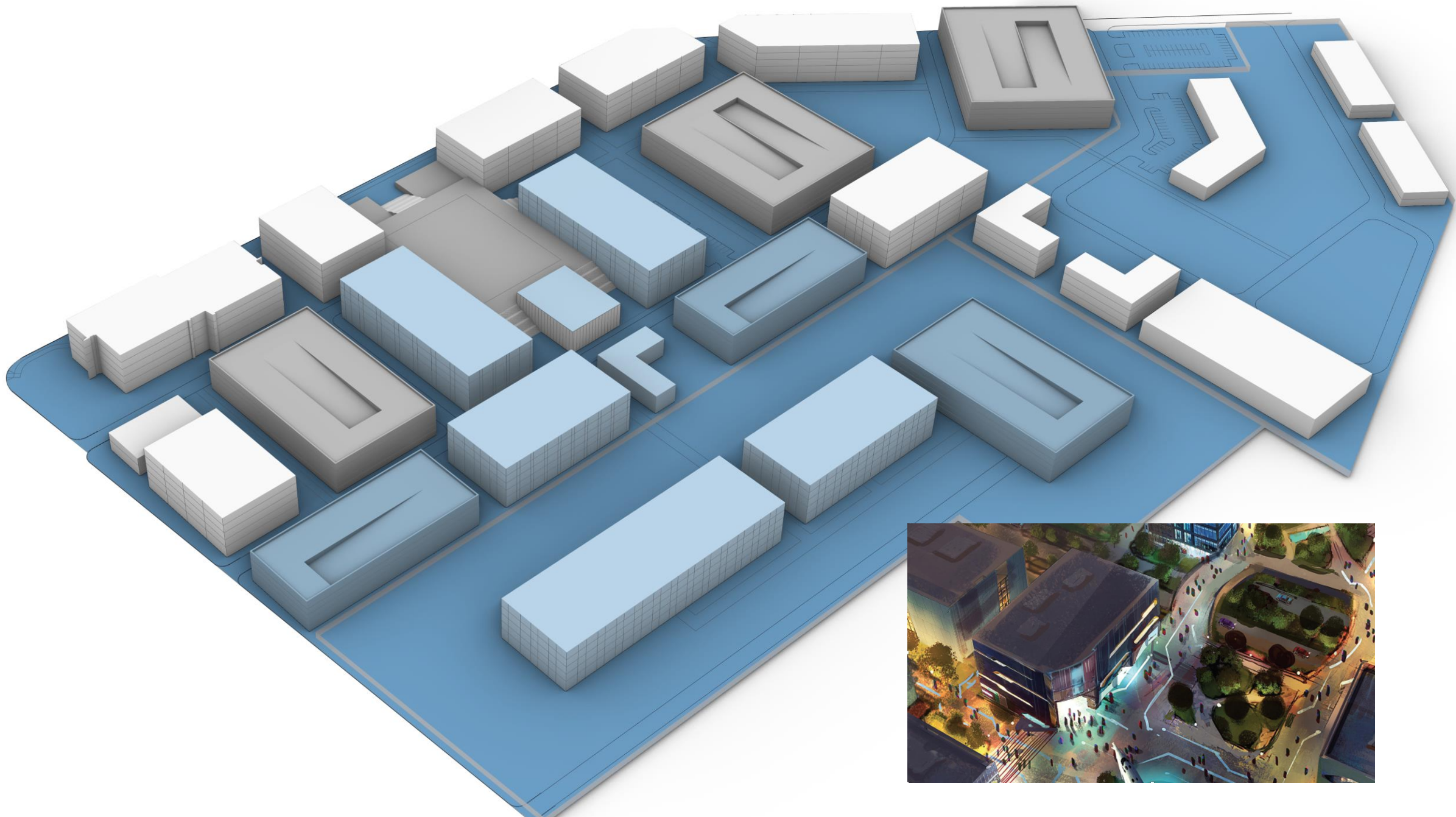
Elroy
BI-FOLD DOORS























FITNESS
CENTER





TECH PORT *SAN ANTONIO*

BUILDING
FUTURES

PRESENTED BY

