



Stantec's US Federal Services Programs

SAME Small Business Symposium

**Bremerton, WA
April 15, 2025**





Stantec At-A-Glance

1954

Stantec
founded

32,000+

Employees
globally

6

Continents
we operate in

450+

Locations
worldwide

STN

Traded on
NYSE & TSX

\$9.4 billion

Market
Cap (\$USD)



Stantec At-A-Glance

85+

Years experience
with US Federal
Government

200+

Active Federal
Contracts as
Prime, JV
or Sub

320+

Project Managers
on active Federal
projects

790+

Active partnerships
with Small
Disadvantaged
Businesses

2025

SILVER Military
Friendly ® Employer





Where we are

We connect to projects
on a personal level and
advance quality of life
across the globe



How We Rank

#1

Top 100 Architecture
Engineering Firms
(BD+C, Dec 2024)

#4

Top 100 Pure
Designers
(ENR, 2024)

#7

Top 225 International
Design Firms
(ENR, August 2024)

#3

Top 50 Military Facility
Architecture Firms
(BD+C, Mar 2025)

#8

Top 500 Design
Firms
(ENR, April 2024)

#8

Global 100 Most
Sustainable Corporation
Amongst Industry Peers
(Corporate Knights, Jan 2025)

#14

Top 200
Environmental Firms
(ENR, October 2024)

#4

Top 50 Environment
Water Supply – Design
(ENR, Aug 2024)

Stantec Northwest

- 65-year history
- Continuously involved in NAVFAC Northwest A/E IDIQs and Design-Build projects for the past 20+ years, including:
 - Architectural
 - MEP
 - Multidiscipline
 - Civil/Structural
 - Waterfront
 - Master Planning/Industrial Engineering
- 300+ IDIQ task orders in the past 25 years
- 30+ Design Build projects in the past 10 years





NAVFAC Northwest PSNS Multi-Mission Dry Dock

- Shipyard Infrastructure Optimization Program (SIOP)
- CVN-78 carrier capable
- Joint Venture partner
- Stantec performed design of pressure relief system, dewatering pumphouse, process water/OWTS collection & treatment, dry dock electrical/IT/SCADA, industrial and shore power, lighting, support buildings, plus environmental permitting support

Puget Sound Naval Shipyard,
Bremerton, Washington

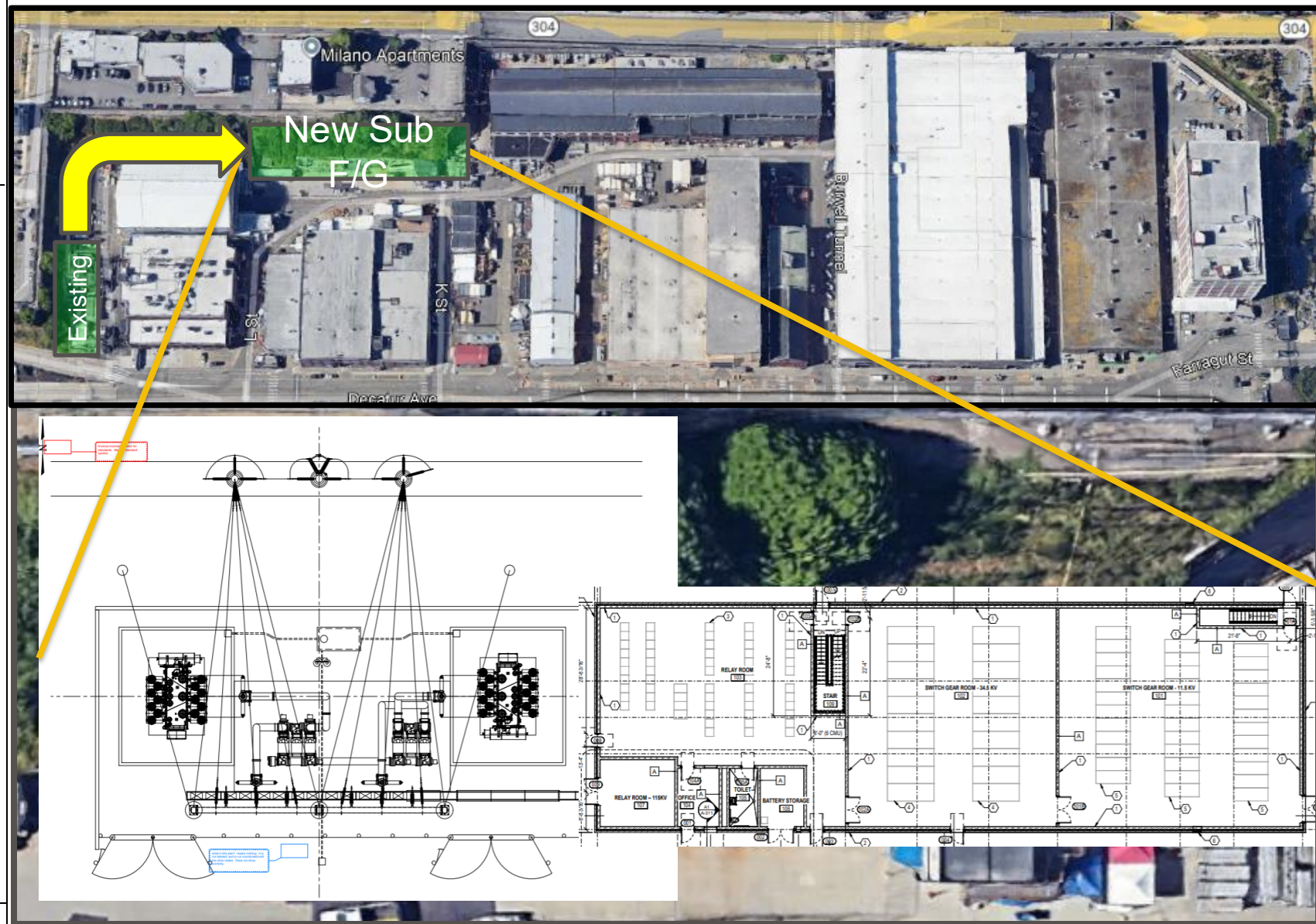




NAVFAC Northwest P-891 Shipyard Electrical Backbone

- Shipyard Infrastructure Optimization Program (SIOP)
- Replaces Substation F/G
- JV Partner
- Stantec performed high voltage electrical engineering design of the substation, including 115 KV/34.5 KV/11.75 KV transformers, 115KV gas-insulated switchgear with circuit breakers and disconnect switches; Structural Engineering for vault and building; Scheduling

Puget Sound Naval Shipyard,
Bremerton, Washington





Port of Seattle International Arrivals Facility

- New 450,000 SF facility
- LEED Registered - Targeting Gold
- Doubles the international capable gates from 12 to 20
- Provided electrical, lighting, information and communications technology, airport information systems, and audiovisual design services
- Progressive Design/Build

SeaTac, Seattle, WA

Buildings



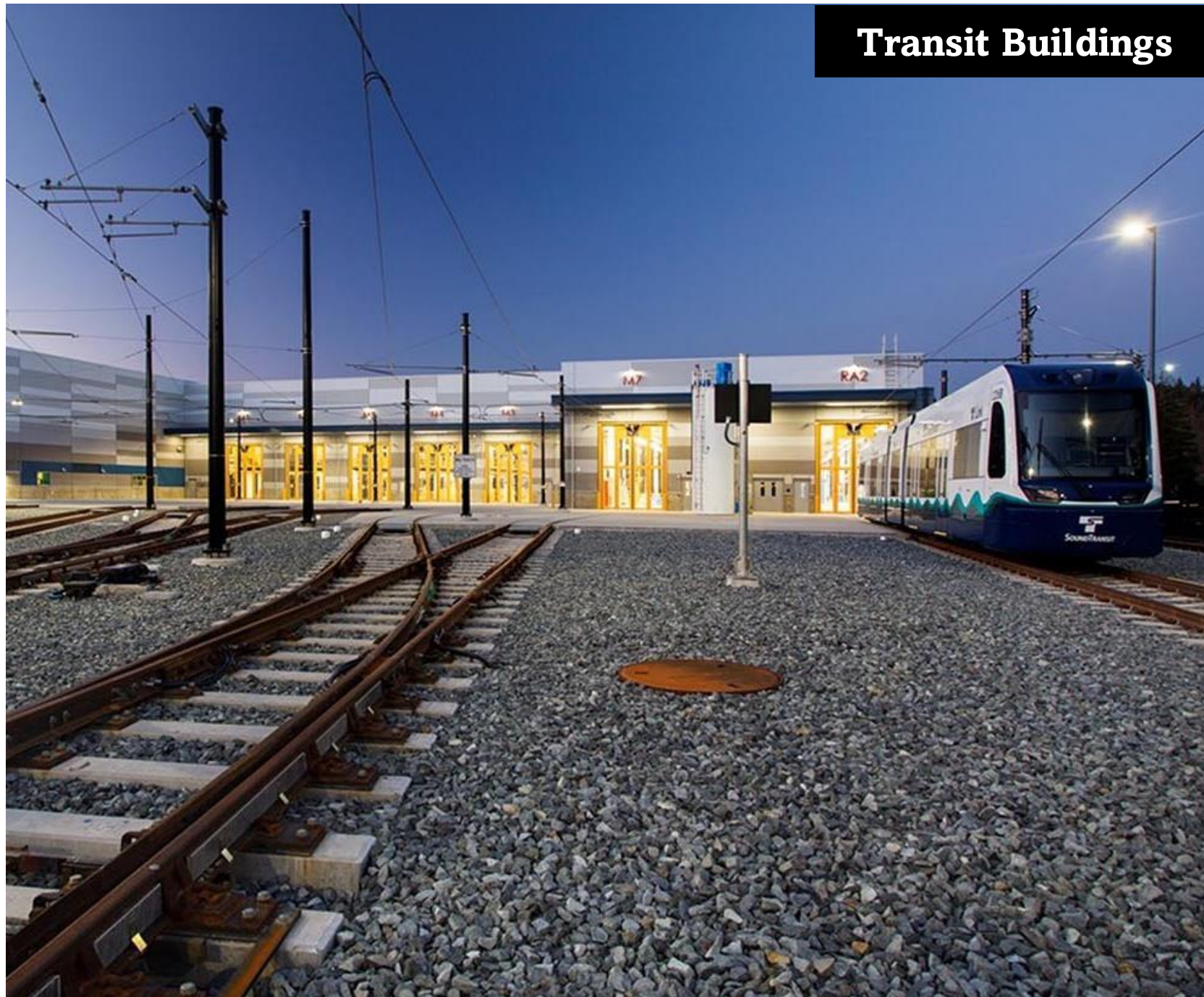


Sound Transit Operations & Maintenance Facility East

- LEED Certified Gold
- Design/Build project
- Includes a 96-bay light rail vehicle storage yard, 14 bay maintenance facility, and employee offices
- Design optimizes the needs of the facility's program while allowing for approximately 1.2M SF of future transit-oriented development
- Responsible for design management; LEED facilitation; electrical engineering; mechanical engineering; process piping; site design management; environmental permitting; and design for lighting, IT/communications, security, signals, SCADA, acoustics, and track integration

Bellevue, WA

Transit Buildings



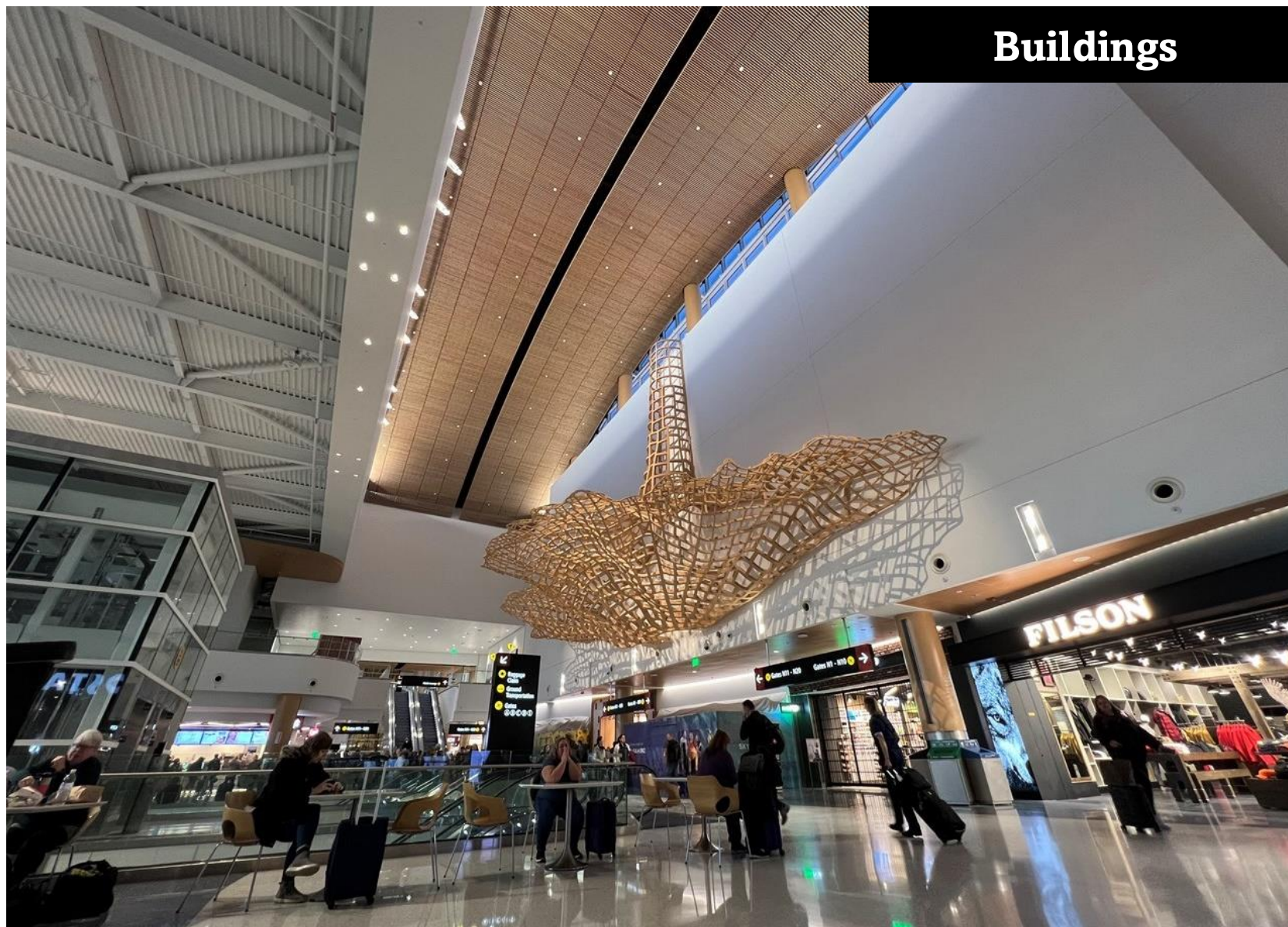


Port of Seattle North Satellite Terminal Modernization

- Footprint expansion of 255,000 SF, triples dining and retail to 46,000 SF
- Provided electrical, technology, lighting, and acoustics
- International Partnering Institute John I. Martin Partnered Project of the Year Awards — Silver Award, Collaborative Project Awards (2022)
- Significant modifications to electrical power distribution systems

SeaTac, Seattle, WA

Buildings





Former Blue Heron Mill EPA Multipurpose Brownfield Grant Project

- Secured \$800k federal funding through the US EPA Brownfields Grant program
- Working with the Confederated Tribes of the Grand Ronde Community of Oregon
- Reuse plan includes: a multi-use path, enhanced riverbank reflecting the historic pathways of water from the falls, various open spaces, and new buildings for office, retail, residential, or hotel use

Environmental





King County Cedar Creek Fish Barrier Removal

- Existing 40-year-old barrier to fish migration to restore natural stream processes and maximize stream function.
- Rebuilt 1,200-ft. of severely degraded creek channel.
- Recreated a sinuous alignment with 23 log structures, 130 pieces of large woody debris, planted bank stabilizing vegetation, and created deep pools.
- Increased wetlands and improved wetlands by more than 20% and is injunction compliant.

King County, WA

Water/Environmental





Contact Information:

Lydia Griffey, Senior Principal, Federal

Direct: 907-343-5268 | Mobile: 907-317-3323

lydia.griffey@stantec.com

**Bob Schlesinger, PE, LEED AP BD+C, ENV SP, F.SAME
Senior Principal, Senior Program Manager for SIOP**

Direct: 425-602-3533 | Mobile: 360-968-0899 robert.schlesinger@stantec.com