

LOS ANGELES DISTRICT CORPS OF ENGINEERS (SPL)

SAME Phoenix Post Government-Industry Engagement

Richard J. Fontanilla, P.E.

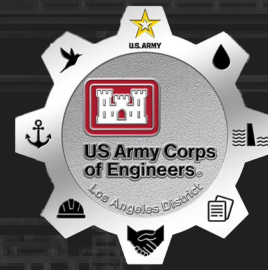
Area Engineer

Arizona-Nevada Area Office

Construction Division

US Army Corps of Engineers, Los Angeles District

April 17th, 2025



U.S. ARMY



US Army Corps
of Engineers®



U.S. ARMY



US Army Corps
of Engineers®

LOS ANGELES DISTRICT OVERVIEW

2



SPL Area of Operations

Harbor

Military Customer



Over 720 Team members serving a population of 33 million people

Actively supporting Southern California Wildfires

During TS Hilary: ~19,000 acre-feet of water from Prado and Whittier Narrows Dams (Worth ~\$19M)

Support to 8 million acres of military installations

(Army, Navy, Air Force, Space Force, Marine Corps – 15 total bases)

15 Construction Offices

6 Regulatory Offices

Operate & Maintain 17 dams and 61 miles of levee across AZ, NV, CA

Operate & Maintain 14 harbors along Southern California

Maintain 5 River basins across AZ, NV, and Southern California

Maintain 420 miles of shoreline

California VA Medical Centers in San Diego and Long Beach

Sustain Critical Habitats (300+ Threatened / Endangered Species)

Ports of LA/Long Beach = 5th Busiest Port Complex in the World!

67 Federally-recognized Tribes (27 Non-Federal)

8 Senators / 4 Governors / 44 House Representatives

Small Business Program inducted into the AZ Million Dollar Circle of Excellence



U.S. ARMY



US Army Corps
of Engineers®

Civil Works



**Flood Risk Management
Operations & Maintenance
Project Planning**

**16 Dams and 61 Miles of Levees
5 River Basins Across AZ, NV and SOCAL**

Regulatory Program & Permitting / Section 408 / Real Estate /
Environmental Justice / Water Projects & Studies
595 Program / Levee and Dam Safety
Reservoir Regulation / Hydraulics and Hydrology / Tribal Nations



SPL MISSIONS

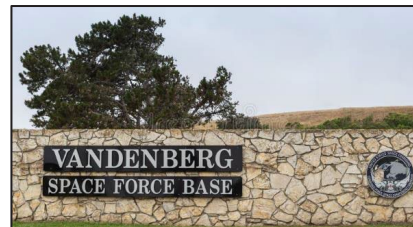
Military Programs



**Support to DoD Agencies (Army, Navy, Air Force,
Space Force, Marine Corps)**

**FUDS (Formerly Used Defense Sites), EQ (Environmental
Quality), IRP (Installation Restoration Program),
MILCON (Military Construction), SRM (Sustainment
Restoration, Maintenance), UXO (Unexploded
Ordnance), Sustainability**

Programming & Project Management / Environmental EQ / IRP / FUDS



International and Interagency



**Assists Non-DoD Federal, State and Local
Agencies via Economy in Government
Act**

**Full Range of Engineering and Construction
Expertise and Support to our IIS Customers**

Programming / Engineering / Construction
Real Estate Acquisition / Contracting Management
Construction Management

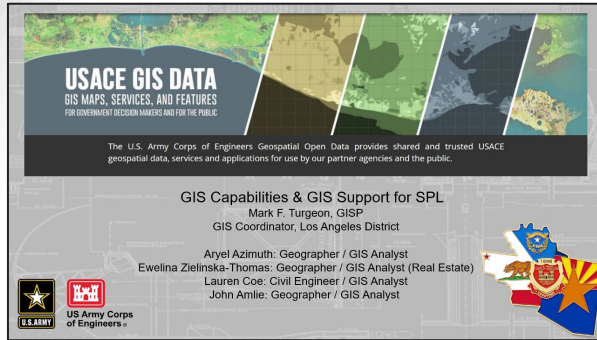




U.S. ARMY

US Army Corps
of Engineers®

Geospatial Support



Connect Geography with Data Resulting In: Cost Savings, Better Decision Making Improved Record Keeping and Communication



Web maps for SPL Projects



Whittier Narrows Dam



Active Wildfires Dashboard

SPL MISSIONS

Navigation/Coastal



Safe, Reliable, Efficient, Effective and Environmentally Sustainable Waterborne Transportation Systems

14 Harbors Along SOCAL for Movement of Commerce, National Security Needs, Recreation Plan/Construct Navigation Channels, Ports, Harbors, Maintain Channel Depths

Ports of Long Beach and Los Angeles Account for \$420B in Annual Cargo

***Together, Make Up the 5th Busiest Port Complex in the World!**

Marina del Rey Harbor Accounts for 5,300 Slips (AKA Parking Spaces for a Boat)

***One of the Largest Recreational Harbors in the USA!**



Ports of Long Beach & LA Account for 40% of ALL shipping containers entering USA

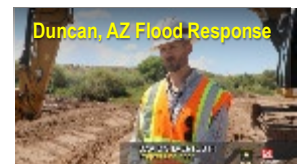
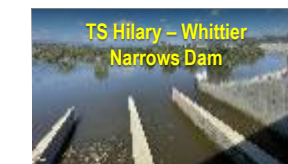
Emergency Management



Engineering Services to Respond to National and Natural Disasters

**Public Law 93-288 (Stafford Act)
National Response Framework
ESF #3
Public Law 84-99**

Rehab and Inspection Program / EM Planning
Engineering and Construction Support
Disaster Preparation
SPL Continuity of Operations Planning
USACE Reach-Back Operations Center (UROC)



Temporary
Power



Debris
Management



Temporary
Housing



Critical Public
Facilities



Temporary Roofing
"Blue Roofs"

— Response —

— "Short-Term" Recovery —



U.S. ARMY

US Army Corps
of Engineers®

PRIME CONTRACTING OPPORTUNITIES: IIS INTERAGENCY & INTERNATIONAL SERVICES (SUBJECT TO CHANGE)

Project	Description	Advertise on SAM.GOV	Range
Expand Emergency Power to HVAC Systems (IIS Program) Phoenix VA	(DB): Provide emergency power to maintain all components of the VA's HVAC systems in the event of a public service power outage. (Market Research/Not Yet Initiated)(No SAM Posting)	Q3-4, FY26 Set-Aside- TBD	\$10M-\$25M
Removal and Reconstruction of the Little Colorado River (LCR) Winslow Levee, AZ (Civil Works Program)	(DBB): Removal and reconstruction of approximately 2,000 feet of the Ruby Wash Diversion Levee (RWDL) to its abutment with the Winslow Levee; Removal and reconstruction of approximately 3,500 feet of the Winslow Levee from its abutment with the RWDL to I-40 (includes levee segments under the bridges); total length of new and reconstructed levees would be approximately 22,570 feet (4.27 miles) (Market Research Not Complete/W912PL25S0002)	FY26 Set-Aside- TBD	\$50M-\$100M
Environmental Services (IIS Program) Dewey-Humboldt, AZ	Iron-King Mine-Humboldt Smelter (IKM-HS). (MATOC or SATOC: TBD)(Claudia Garcia) (W912PL25S0007-Design) (W912PL25S0008-Remediation) (W912PL25S0009-Construction)	Q4, FY25 0007-UNR 0008-SBSA 009-SBSA	Design: \$49M Construction: \$249M Remediation: \$100M



U.S. ARMY



US Army Corps
of Engineers®

PRIME CONTRACTING OPPORTUNITIES: MILITARY PROGRAM (SUBJECT TO CHANGE)

6

Project	Description	Advertise on SAM.GOV	Range
Child Development Center Luke AFB, AZ	Construct a 3,394-SM building, steel-framed, concrete slab and foundation system, masonry block exterior, and standing seam metal roof (Bill Prout) (DB)(Market Research Underway) (No SAM Posting Yet)	4th QTR, FY25-1 st QTR, FY26	\$25M-\$50M
DB Construction MATOC-East Branch Nevada includes Clark County, Lincoln and Nye Counties and Arizona include Maricopa and Pima counties.	Three but no more than five firm-fixed price (FFP) individual Indefinite Delivery Contracts (IDCs) and subsequent FFP Task Orders (TOs) (James Elsberry/John Oshima)	4th QTR, FY25	Up to \$99M
Training Support Center Ft. Irwin, CA	Construction of a 60K-SF TSC to be part of the National Training Center (Eric Negrete) (SB Set-Aside)(DBB) (W912PL25R0005 & W912PL25S0001)	4th QTR, FY25-1 st QTR, FY26	\$25M-\$50M
Disaster Resiliency Program Phase 2 Creech AFB, NV	79,335-SF Aircraft Maintenance Facility (AMF) hangar, a 4,429-SF covered Aerospace Ground Equipment (AGE) storage yard, and 100,167-SF of airfield pavements (James Elsberry/John Oshima) (DB)(W912PL25S0003)	4th QTR, FY25 Subcontracting Opportunities Available	\$100M-\$250M



U.S. ARMY

US Army Corps
of Engineers®

PRIME CONTRACTING OPPORTUNITIES: CIVIL WORKS, AE AND NAVIGATION

(SUBJECT TO CHANGE)

Civil Works Current Projects	Description	ADV	Range	Anticipated Set Aside
Murrieta Creek, CA	Phase 2B-Buried riprap bank protection and ecosystem restoration (Damien Lariviere)	Q3-Q4, FY25	\$25M-\$50M	SBSA
LA County, San Bernardino, Orange County, Arizona and Nevada	FY26 Channel Levee Maintenance Services (Trevor Snyder)	Q4, FY25	\$25M-\$50M	SBSA
Current Projects	Description	ADV	Range	Anticipated Set-Aside
Bldg 3566, Wax Plant Electrical Upgrades YPG, AZ (Military Program)	(DB): (3) Wax Mixing, Melting, and Pouring Systems (WMMPS) and two conditioning chambers at building 3566. The WMMPS and chambers will be configured to support wax loading of projectile and mortar bodies. (Robert Hutchison) (No SAM Posting Yet)	Q4, FY25	\$1M-\$5M	TBD
Bldg 262, Hangar Addition/Alteration Nellis AFB, NV (Military Program)	(DB): Hangar for a new F-35 Air Maintenance Squadron at Nellis AFB. Repair hangar bay, modifying administrative spaces to include wall/door and utility changes for new occupant space requirements, and providing structural repairs and retrofits. Approximate 4K GSF addition with optional mezzanines. (W912PL25S0014)(James Elsberry)	Q4, FY25	\$10M-\$25M	TBD
Current Projects	Description	ADV	Range	Anticipated Set Aside
Civil Works MATOC	(5-Year Base)(Civil Works Plus Vertical Design) (No SAM Posting Yet) (Vincent Andrada/Paul Underwood)	TBD	\$48M Capacity	UNR and SB
Hydrology and Hydraulics SATOC	(5-Year Base)(Hydrology, Hydraulics, Sediment Engineering)(No SAM Posting Yet) (Vincent Andrada/Paul Underwood)	TBD	\$5M Capacity	SB



U.S. ARMY



US Army Corps
of Engineers®

CONTACT INFORMATION

AREA AND RESIDENT OFFICES

Southern California Area Office

Area Engineer
Tom Weber, P.E.
(760) 920-0526

Santa Ana Dams Resident Office

Resident Engineer
Pete Gauer, P.E.
(951) 898-6153

Ft Irwin Resident Office

Resident Engineer
Robby Smith, P.E.
(760) 256-4527

San Diego Resident Office

Resident Engineer
Jared Rowley
(858) 430-2805

High Desert Area Office

Area Engineer
John Stephens, P.E.
(661) 265-7222x1236

Edwards AFB Resident Office

Resident Engineer
Robby Smith, P.E.
(760) 256-4527

DVA Long Beach Resident Office

Resident Engineer
Kevin Thomas, P.E.
(760) 708-6084

DVA San Diego Resident Office

Resident Engineer
Roberto Paredes, P.E.
(858) 379-1920

San Andreas Resident Office

Resident Engineer
Jose Rocha
(626) 401-4084

Environmental & Tech Support Branch

Thad Fukushige P.E.
(626) 401-4048

Vandenberg AFB Resident Office

Resident Engineer
David Jorgenson, P.E.
(805) 734-4670

Arizona Nevada Area Office

Area Engineer
Richard Fontanilla, P.E.
(602) 230-6851

Road Runner Resident Office

Resident Engineer
Jeff Owens, P.E.
(602) 230-6870

Las Vegas Resident Office

Resident Engineer
Teryl Stacey, P.E.
(702) 852-3544

Tucson Resident Office

Resident Engineer
David Silvertooth, P.E.
(520) 584-1662

CONSTRUCTION DIVISION INFORMATION

Los Angeles District Website

www.spl.usace.army.mil

Construction Quality Assurance Training

email CESPL.CQM.Training@usace.army.mil

Resident Management System & QCS

Contact Area or Resident Offices

Questions Concerning Contract Types

Area and Resident Engineers and District
Contracting Office
(213) 452-3424

Questions concerning Small Business Opportunities

Roger Minami: kinya.r.Minami@usace.army.mil





U.S. ARMY



US Army Corps
of Engineers®

ADDITIONAL CORPS OF ENGINEERS CONTACTS

9

<p>Navigation Branch</p> <ul style="list-style-type: none">-Joe Ryan, Joseph.A.Ryan@usace.army.mil-Brian Kim, Brian.Y.Kim@usace.army.mil-Lillian Schaffer, Lillian.A.Schaffer@usace.army.mil-Steve Dwyer, Charles.S.Dwyer@usace.army.mil	<p>Operations Division</p> <ul style="list-style-type: none">-Mark Cohen (Chief): Mark.D.Cohen@usace.army.mil-Michael Turanitza: Michael.Turanitza@usace.army.mil-Trevor Snyder: Trevor.R.Snyder@usace.army.mil-Mylene Guron: Mylene.M.Guron@usace.army.mil-Julio Ramos: Julio.E.Ramos@usace.army.mil
<p>Military Branch</p> <ul style="list-style-type: none">-Eric Negrete: Eric.A.Negrete@usace.army.mil-John Oshima: John.D.Oshima@usace.army.mil-Grace Parnell: Grace.R.Parnell@usace.army.mil	<p>Construction Division</p> <ul style="list-style-type: none">-Shaun Frost (Chief): Shaun.R.Frost2@usace.army.mil-John Stephens: John.W.Stephens@usace.army.mil-Thad Fukushige: Thad.T.Fukushige@usace.army.mil
<p>Fire Recovery/Small Business</p> <ul style="list-style-type: none">-Christine Davis: Christine.Davis@usace.army.mil-Roger Minami: kinya.r.Minami@usace.army.mil	<p>Sacramento and Albuquerque District Representatives</p> <ul style="list-style-type: none">-Vernon Simpkins: Vernon.A.Simpkins@usace.army.mil-Stephanie Parra: Stephanie.N.Parra@usace.army.mil
<p>Contracting Division</p> <ul style="list-style-type: none">-Sean Sackett (Chief): Sean.P.Sackett@usace.army.mil-Pat Bonilla: Patricia.B.Bonilla@usace.army.mil	<p>DVA (Department of Veteran Affairs) Project Execution Office:</p> <ul style="list-style-type: none">-David Van Dorpe (Chief): David.M.Vandorpe@usace.army.mil
<p>Workforce Management: Emily Wang, Emily.I.Wang@usace.army.mil</p>	<p>Engineering Division</p> <ul style="list-style-type: none">-Paul Underwood (Chief): Paul.W.Underwood@usace.army.mil-Vincent Andrada: Vincent.G.Andrada@usace.army.mil
<p>IIS (International & Interagency) Branch</p> <ul style="list-style-type: none">-Dina Aman: Dina.Aman@usace.army.mil-Claudia Garcia: Claudia.Garcia@usace.army.mil-John Drake: John.E.Drake@usace.army.mil	<p>Mega Projects Division</p> <ul style="list-style-type: none">-Priyanka Wadhawan, Priyanka.Wadhawan@usace.army.mil



U.S. ARMY



US Army Corps
of Engineers®

U.S. ARMY CORPS OF ENGINEERS LOS ANGELES DISTRICT

www.spl.usace.army.mil

COL Andrew Baker
Commander and District Engineer
(213) 452-3961

Andrew.J.Baker@usace.army.mil

Ms. Sally DeSimone, Administrative Assistant
(213) 452-3964

Sally.M.DeSimone@usace.army.mil

Ms. Kim Thomas, P.E.
**Deputy District Engineer for Programs
and Project Management**
Kimberly.S.Thomas@usace.army.mil

Kenneth Reed, Administrative Assistant
(213) 452-3974

Kenneth.Reed@usace.army.mil



LTC Stephen Brooks
Deputy Commander
(213) 238-0052

Stephen.V.Brooks@usace.army.mil

Ms. Lisa A. Lugar
Executive Assistant to the Commander
(213) 452-3963

Lisa.A.Lugar@usace.army.mil

Andrew Rios, Administrative Assistant
(213) 452-3965

Andrew.A.Rios@usace.army.mil

Roger Minami
Procurement Analyst, Office of SB Programs
Kinva.r.minami@usace.army.mil