

MARCH AIR RESERVE BASE, CA.





ORGANIZATIONAL LEADERSHIP



Colonel Bryan M. Bailey
452d Air Mobility Wing
Commander



Colonel Biren Oberoi
452d Air Mobility Wing
Vice Commander



CMSgt Timi C. Bilal
452d Air Mobility Wing
Command Chief



**Colonel Robert
A. Wieman**
452d Air Mobility Wing
MSG Commander

VISION:
**DOMINANT MOBILITY & NUCLEAR
FORCE... READY NOW!**

452d Air Mobility Wing



KC-135 Stratotanker

- 24/7 Alert
- Nuclear Mission
- Homeland Support

Jnt Deployment Center

- 40,000 Marines
- 70,000 Soldiers
- 110K Service Members

C-17 Globemaster III

- 10,000 Annual Flt Hrs.
- 20 Global Exercises

Partner Units



**144th Fighter Wing
Det. 1**



**Air and Marine
Operations Center**



163rd Attack Wing

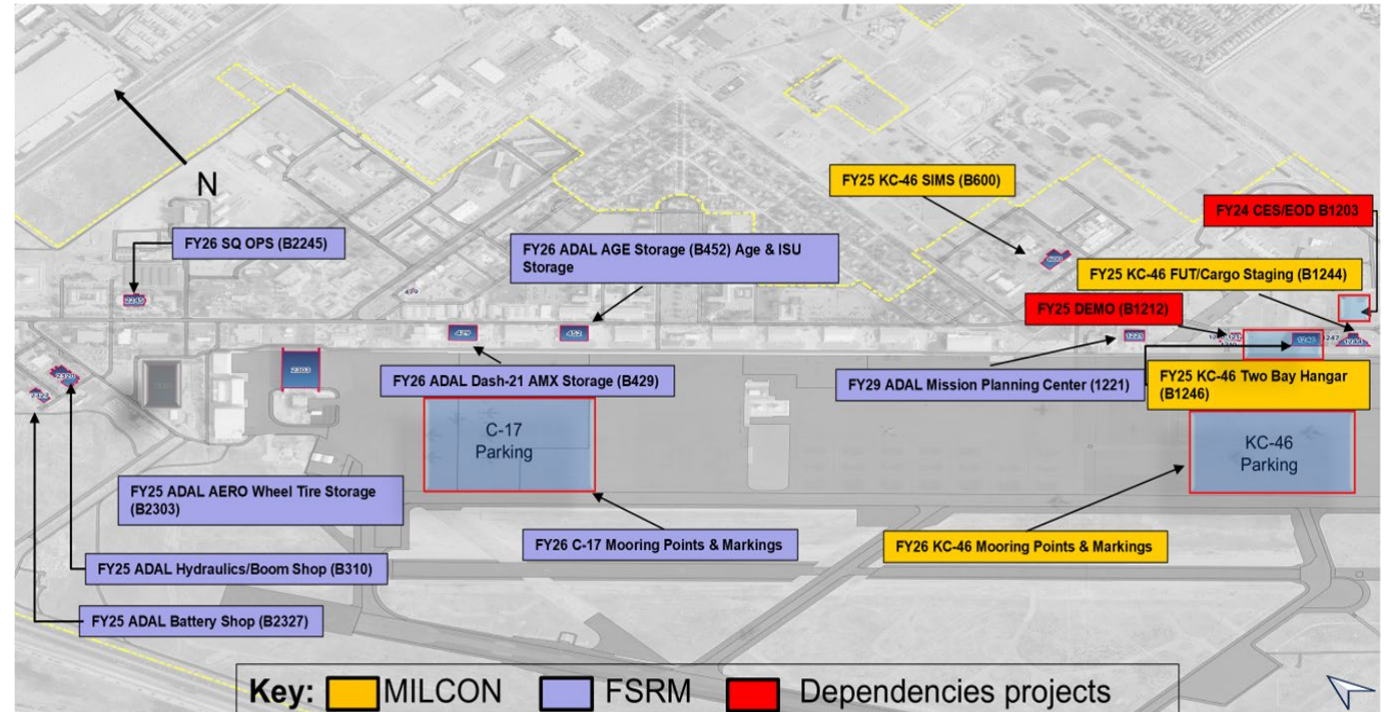
- I. MARB Overview
- II. Legislative support
- III. IDP/ADP'S
- IV. Active Projects - Infrastructure Planning and Construction
 - I. Public-Private Partnerships
- V. Past Projects - Infrastructure Planning and Construction
 - I. Public-Private Partnerships
- VI. Office of Local Defense Community Cooperation (OLDCC)
- VII. Joint Use Agreement (JUA) - March JPA/March Inland Port Airport Authority (MIPAA)

March ARB Overview

- Established in 1918 as March Field
- One of the largest AFRC installations
- 2,150 acres in LA metropolitan area
- Mission includes air refueling, aeromedical evac
- Home of 4th Air Force, 452d Air Mobility Wing
- Home of 912th Air Refueling Squadron, an active-duty squadron of the Regular Air Force and the Air Mobility Command (AMC)
- Home of 922 CEF (S-Team) providing engineering supporting to INDOPACOM AOR



- Main Operating Base 5 (MOB5) for KC-46A Pegasus
- Site Activation Task Force (SATAF) exercise held August 2023
- Environmental Impact Statement (EIS) and Record of Decision (ROD) complete
- Public outreach concluded summer 2023
- Final detailed submittal was complete August 2024



Initiatives/Collaborations

Legislative support (includes but not limited to)

- Preserving, expanding economic visibility of March ARB
- Preparations for Future KC-46A Pegasus MOB5 Bed Down Mission
- Ongoing support for mission sustainment through infrastructure enhancements and support services.



452d Civil Engineer Squadron

Integrity - Service - Excellence

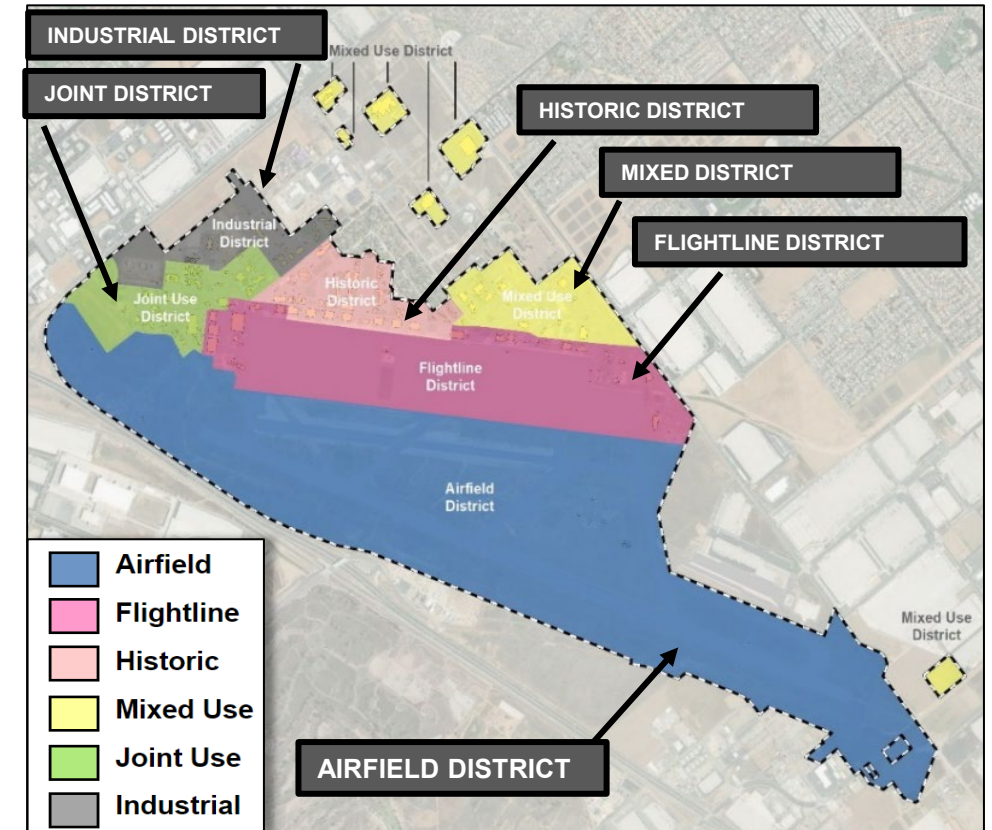
Installation Planning





IDP/ADPs

- March ARB Installation Development Plan (IDP) endorsed by 452 AMW/CC June 2024
- March ARB has six district plans (formerly ADPs) for planning and approved standard of designs in the Comprehensive Planning Platform (CPP)
- Airfield, flightline, historic, mixed use, joint use and industrial DPs



March ARB Planning Districts



452d Civil Engineer Squadron

Integrity - Service - Excellence

FY 26-30+ Project Planning





FY 26-30+ Projects

FY	Project Type	Facilities	PA (\$M)	District
24-26	Sustainment/Energy	Natural Gas Distribution Line	\$ 22.4	AFDS, JU, FLT, H ST, IU, MU
25-33	NM-KC-46	Facilities Support KC-46 MOB 5 3 MILCON/9 FSRM	\$ 247.5	AFDS, JU, FLT, H ST
25-33	Airfileds	Maintain Runway, Taxiways and Aprons (Multi)	\$ 80.0	AFDS
25-30	Sustainment	Maintain Pavements, Streets and Parking Lots (Multi)	\$ 9.5	AFDS, JU, FLT, H ST, IU, MU
26-31	Sustainment	Maintain Historic Buildings	\$ 11.0	HST
26-28	Mission	New Alert Facility & New Mission Facility	\$ 21.0	JU & HST
26-30	Sustainment	Repair Facilities, Paint and Roofs (Multi)	\$ 12.0	AFDS, JU, FLT, H ST, IU, MU
26-33	DEMO	Demo Buildings (Off-Set Policy under utilize Facilities/Closed)	\$ 8.0	AFDS, JU, FLT, H ST, IU, MU
27-30	Mission	Joint Medical Facility (MILCON)	\$ 47.0	HST
27-30	Energy	Microgrid (ERCIP)	\$ 80.0	IU
25-30	Energy	HVAC	\$ 16.0	AFDS, JU, FLT, H ST, IU, MU
25-30	Energy	Generators	\$ 6.0	AFDS, JU, FLT, H ST, IU, MU
25-30	Energy	Lights (LED)	\$ 3.4	AFDS, JU, FLT, H ST, IU, MU
26-27	Sustainment	Fire Supperssion AFFF Sundown Policy	\$ 9.1	FLT

Integrity - Service - Excellence



452d Civil Engineer Squadron

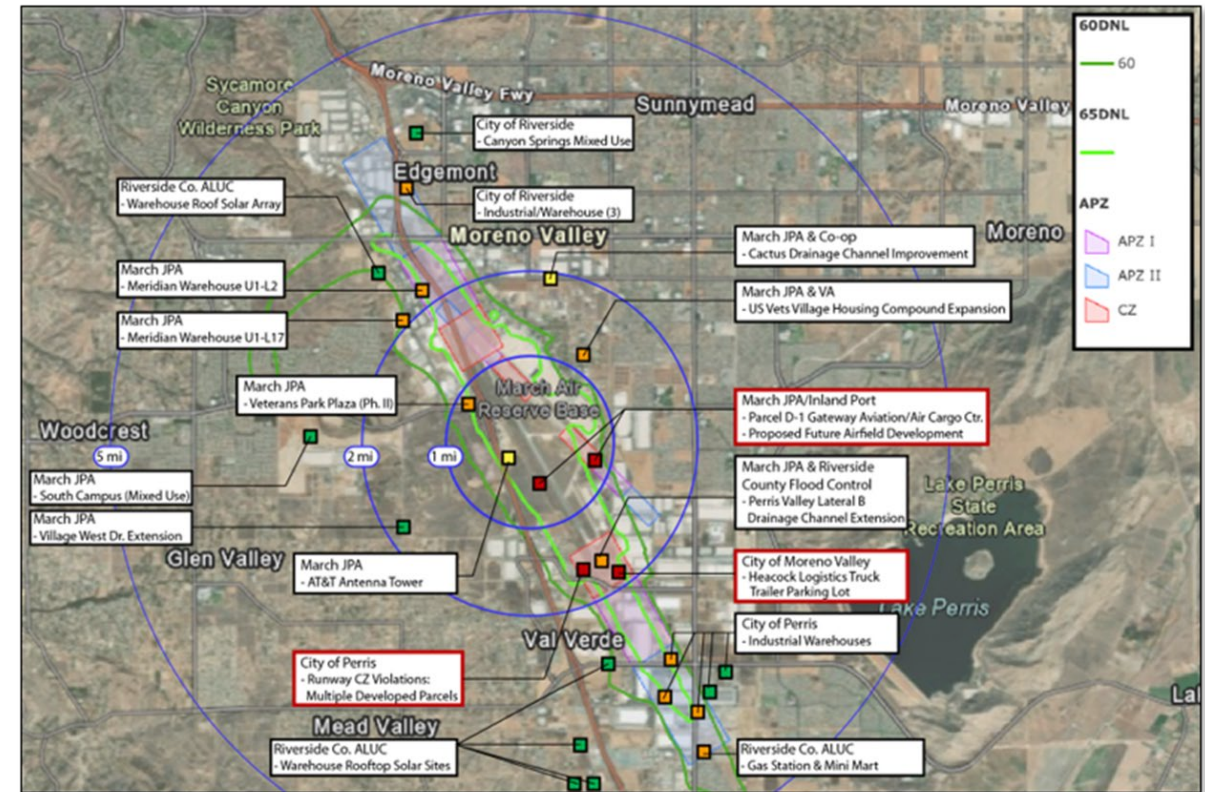
Integrity - Service - Excellence

Community Planning Projects





Active Projects



Active Projects

Public Private Partnerships

- Proposed Parcel D-1 Gateway Aviation Center Terminal – Air Cargo Expansion
- Drainage improvements from EOD area and under Taxiway Alpha
- Base Security Requirements and Force Protection measures
- Taxiway Alpha transition to Golf improvements
- Project review and discussion are ongoing
- Proposed Parcel D-1 Gateway Aviation Center Terminal – Air Cargo Expansion

Infrastructure Planning and Construction

- Heacock Avenue Channel Improvements (Completed in 2020, March ARB collaborated with MJPA, Riverside County Flood Control and City of Moreno Valley)
- Perris Valley Lateral B Drainage Channel Improvement Project - Stage 5 Outfall (Stage 4 In Progress, MARB is collaborating with MJPA, Riverside County Flood Control and private partners)

Infrastructure Planning and Construction

Public-Private Partnerships

- K-4 Warehouse Construction on Cactus Avenue (Completed, site is adjacent to MARB boundary with security requirements and force protection measures for MARB)
- VIP 215 Warehouse Construction (Completed, site is adjacent to western airfield boundary at MARB.)

452d Civil Engineer Squadron

Integrity - Service - Excellence

Office of Local Defense Community Cooperation (OLDCC)



- March Compatible Use Study (MCUS) (Completed)
- Western Municipal Water District (WMWD) - Pressure Reducing Valve (Increased Water pressure to MARB in collaboration with WMWD, MIPA and private partners, Completed)
- Defense Community Infrastructure Program (DCIP) - \$4.3 million funding grant award in FY 2022 to the WMWD for redundant water supply to the Base (In Progress)
- Joint Energy Study for Resiliency and Redundancy with MIPAA (In Progress)



MCUS Fact Sheet Link:

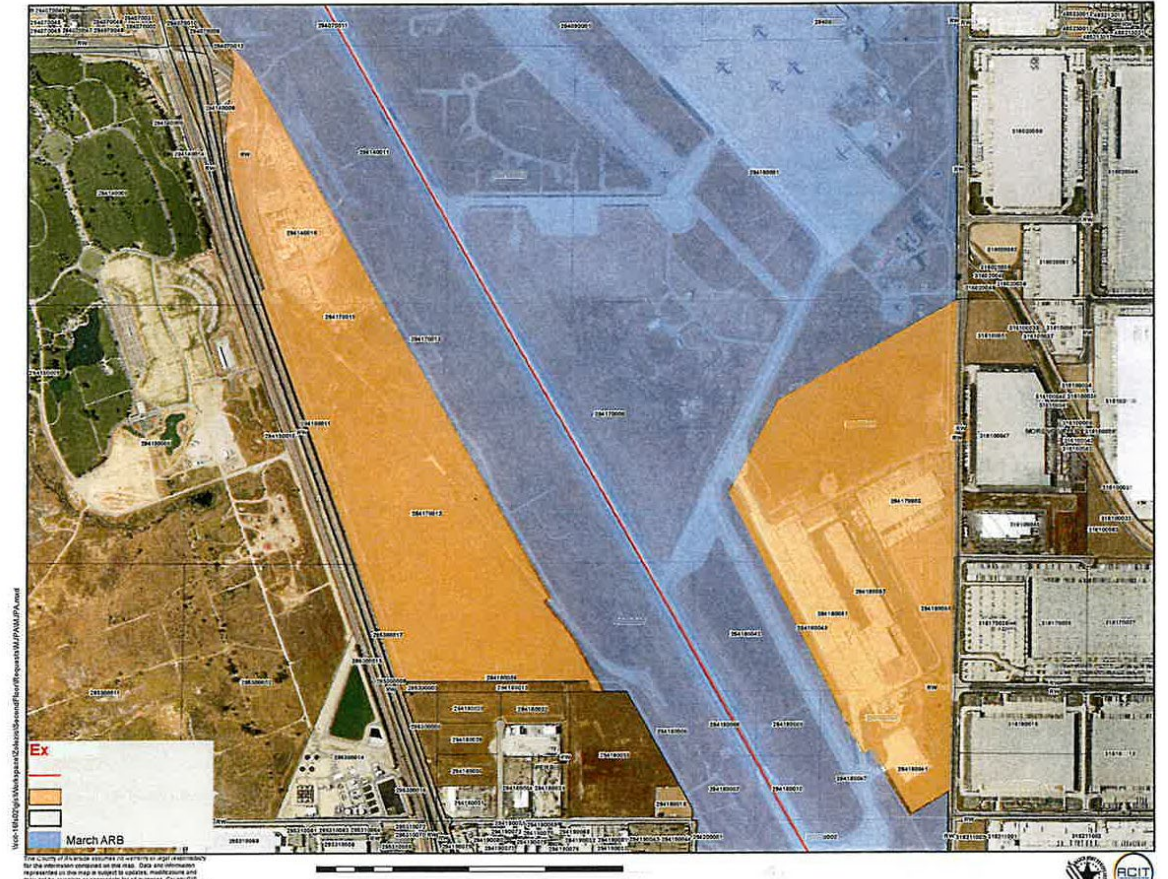
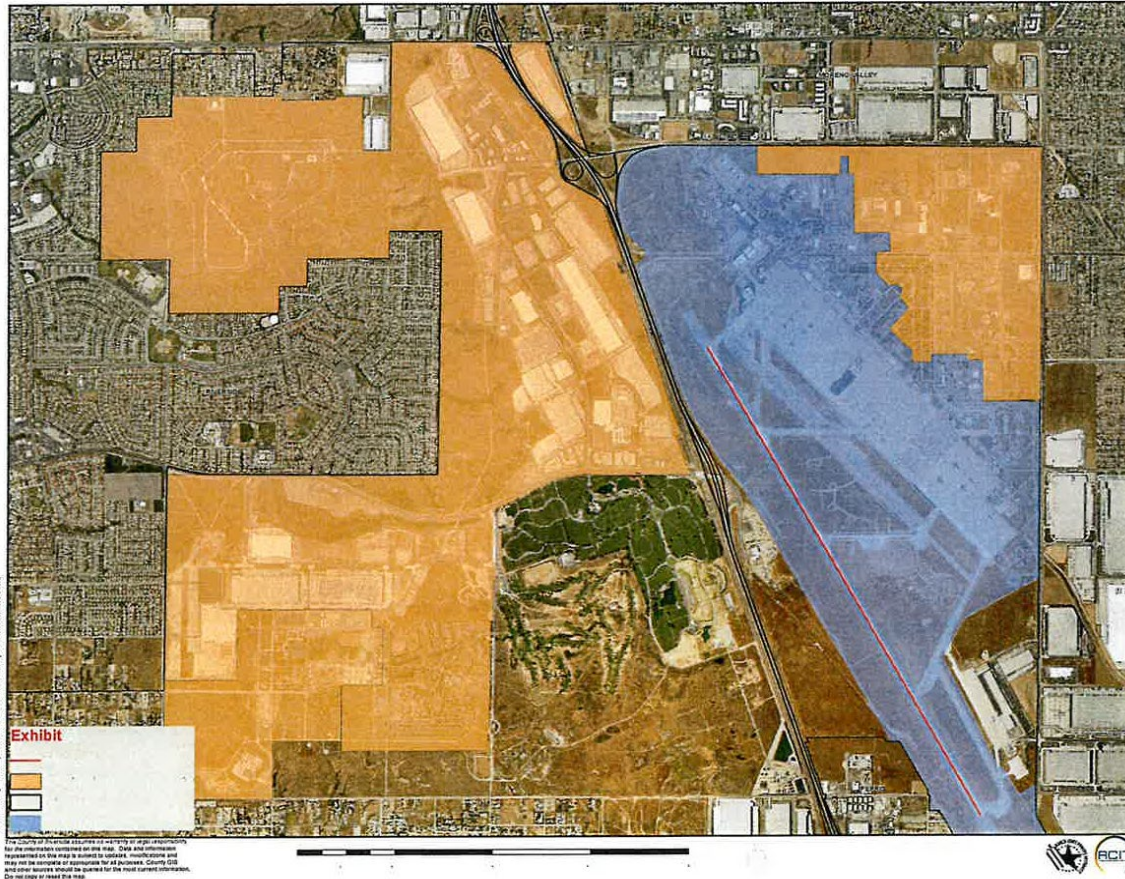
marcharbcus.com/images/docs/March_Fact_Sheet_2_2022_05_05b_AEB.pdf

Joint Use Agreement (JUA)

Background

- The former March Air Force Base, located in an unincorporated area of western Riverside County, California, was realigned in 1996, when 2,075 acres became an Air Force Reserve Base and the remainder of the installation (4,533 acres) was closed as part of a nationwide Base Realignment and Closure (BRAC).
- On May 7, 1997, USAF and Joint Powers Authority entered into a Joint Use Agreement (JUA). A civilian Joint Powers Authority (JPA) was created to plan and implement final reuse of the base by leasing and/or eventually transferring parcels of land to private companies, organizations, or government agencies. (March Joint Power Authority (MJPA))

March Joint Power Authority/March Inland Airport BRAC Area





Questions?

**Mr. Rich McDaniel 452 Planner, Project
Programmer & Mission Sustainment**



