



# ALAMO COLLEGES DISTRICT

## Alamo Colleges District Proposed 2025 Bond Capital Improvement Program







# WHO WE ARE



# MISSION

Empowering our diverse communities for success.

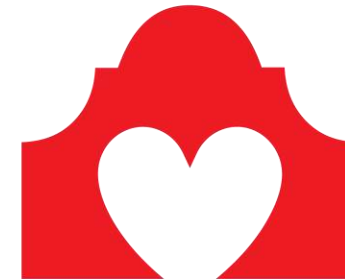
# VISION

The Alamo Colleges will be the best in the nation in Student Success and Performance Excellence.

# VALUES



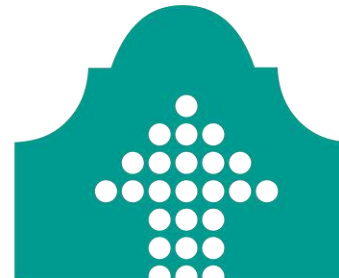
STUDENTS FIRST



RESPECT FOR ALL



COMMUNITY-ENGAGED



COLLABORATION



CAN-DO SPIRIT



DATA-INFORMED



ALAMO  
COLLEGES  
DISTRICT





## OUR MOONSHOT

**“Partnering to end poverty through education and training”**



# THEN & NOW

2018

2024



63.5

Hours average  
SCH to  
Associate  
Degree

Alamo Colleges  
District  
Native  
Students

60,818

79,010



Enrollment

9,060

15,600



College Freshmen

13,160

16,654



HS Dual Credit

4.4  
Years

3.7  
Years



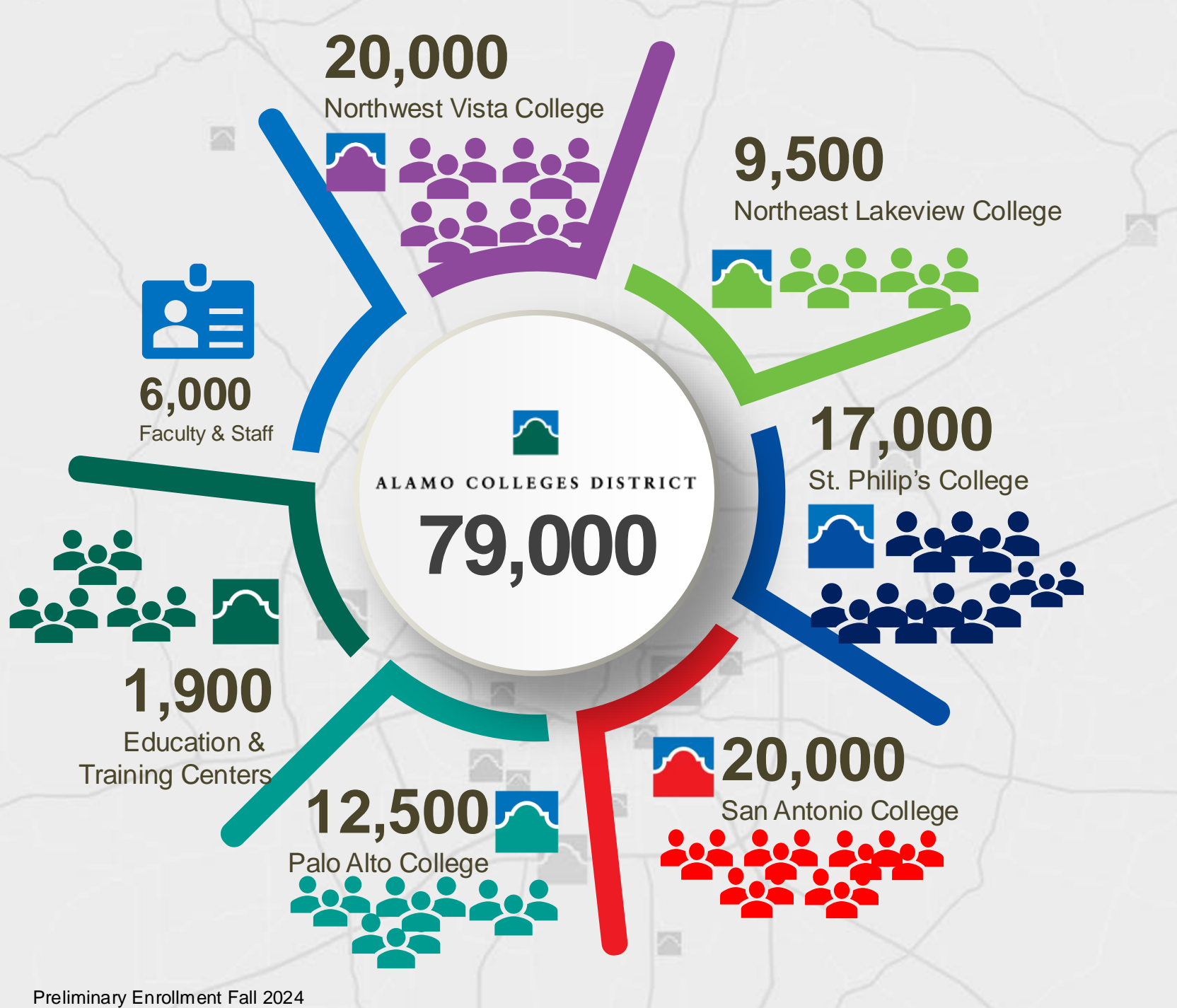
Time to Degree

 30%

 72%

 27%

 8 Months



Preliminary Enrollment Fall 2024

Public Higher Ed Partners

**UTSA**  
33,000

 **TEXAS A&M UNIVERSITY**  
**SAN ANTONIO**  
8,000

**TEXAS STATE UNIVERSITY**

41,000





# LEARNER PROFILE

79,000 Student Enrollment Fall 2024

66% Hispanic

9% African-American

19% White

3% Asian

3% Other

61% Female

39% Male

25.5% Adult Learners 25+

32% Full-Time

68% Part-Time

70% Rely on Financial Aid & Scholarships

29.2% Economically Disadvantaged

17% Academically Disadvantaged

17% Student Parents

7% Military Affiliated



NORTHEAST LAKEVIEW COLLEGE

NORTHWEST VISTA COLLEGE

PALO ALTO COLLEGE

ST. PHILIP'S COLLEGE

SAN ANTONIO COLLEGE



# EXAMPLES OF OF OUR STRATEGIC PARTNERSHIPS

## Education



TEXAS A&M UNIVERSITY  
SAN ANTONIO



UT Health  
San Antonio



## Public



Communities  
In Schools



GOODWILL  
SAN ANTONIO



## Private





# DESIGNATIONS OF EXCELLENCE



**BALDRIGE**

QUALITY & PERFORMANCE  
EXCELLENCE



**ACHIEVING THE DREAM**

STUDENT SUCCESS &  
INSTITUTIONAL EQUITY



**ASPEN PRIZE**

COMMUNITY COLLEGE  
EXCELLENCE



**GREAT PLACES TO  
WORK**

EMPLOYEE EXPERIENCE



**NVC TOP FINALIST**



**SAC ASPEN PRIZE  
WINNER**



**PAC RISING STAR**



# Smart Growth

## 2017-2024

---

- Investment in High-Opportunity, High Demand Programs
- SMART Talent
- AlamoPROMISE
- AlamoU
- Capital Improvements





# San Antonio Surging Environmental Landscape

## San Antonio is the fastest growing city in the U.S. and here's what this means for you

by Amanda Henderson, Photojournalist: Everett Allen | Thu, May 16th 2024 at 9:16 PM  
Updated Thu, May 16th 2024 at 10:35 PM



## As San Antonio grows, so will the tech and science sectors of the economy

by Matt Roy | Tue, May 7th 2024 at 6:38 PM  
Updated Tue, May 14th 2024 at 1:10 PM



## San Antonio ZIPs among most popular in U.S. for 2024

Madelyn Mandola

### MYSA REAL ESTATE & HOMES San Antonio is bigger than Austin, Growth rate says yes

People like San Antonio more than Austin? Growth rates say.  
By Zachary-Taylor Wright, Trending Digital Reporter  
Jan 7, 2025



## San Antonio leads U.S. cities in population adding 22,000 residents

By Amelia Winger, Staff writers  
Sep 13, 2024



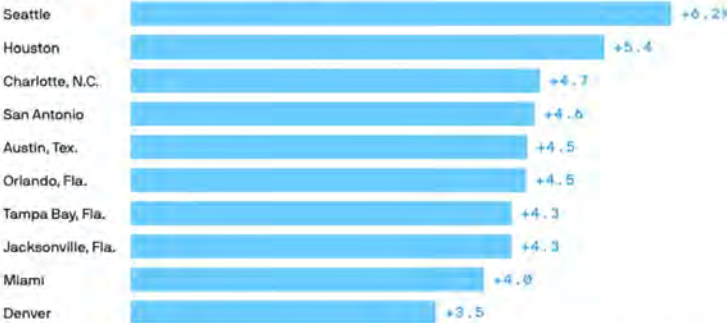
## San Antonio area takes one of top spots for economic growth

Megan Stringer

f x in n s

### Top GDP growth by metro area, 2022 to 2023

Among metro areas with a 2023 population of at least 1.5 million



Data: U.S. Bureau of Economic Analysis; U.S. Census Bureau; Note: Based on change in real gross domestic product from 2022 to 2023; Chart: Azim Visuals

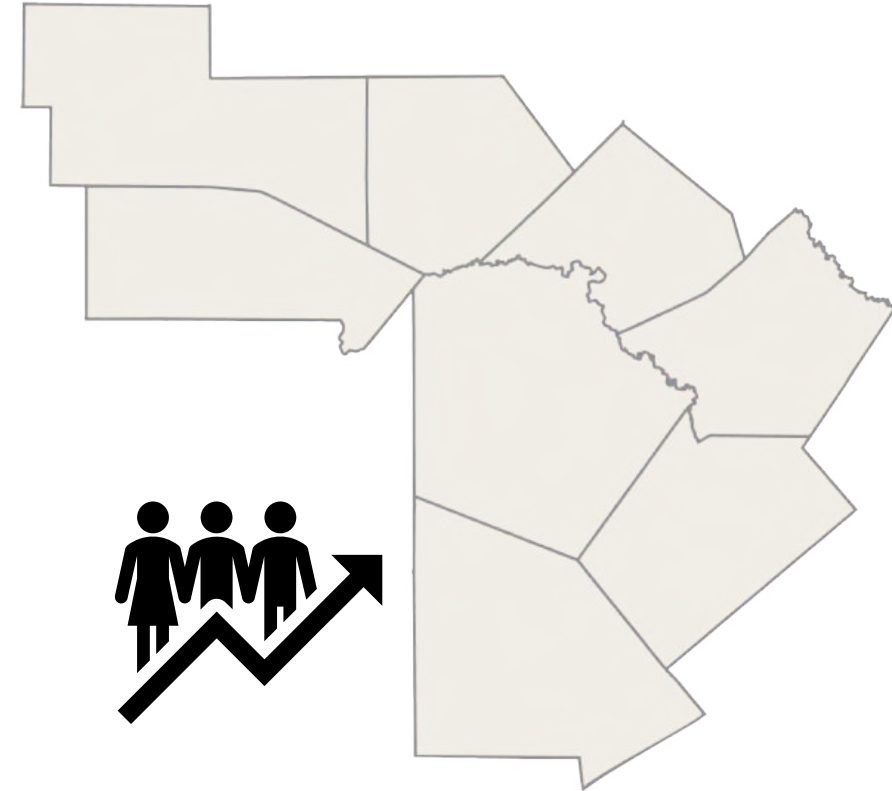


ALAMO  
COLLEGES  
DISTRICT



# County Population Projections for 2020-2040

County	2020	2040	% Increase 2020-40
Atascosa	48,981	57,374	17.1%
Bandera	20,851	21,701	4.1%
<b>Bexar</b>	<b>2,009,324</b>	<b>2,599,727</b>	<b>29.4%</b>
Comal	161,501	315,640	95.4%
Guadalupe	172,706	268,305	55.4%
Kendall	44,279	70,896	60.1%
Kerr	52,598	58,870	11.9%
Wilson	49,753	61,941	24.5%



Source: The County Information Program, Texas Association of Counties



ALAMO  
COLLEGES  
DISTRICT





# GROUNDBREAKING FUTURES



**\$450M Capital Investment**  
General Obligation bond in 2017



**\$50M Capital Investment**  
Maintenance Tax Notes in 2019



**\$270M Investment to extend life of aging facilities**  
Maintenance Tax Notes in 2022



**\$58.5M over 3-years to sustain existing facilities**  
Preventative Maintenance Budget 2022-25



ALAMO  
COLLEGES  
DISTRICT







# 2025 BOND PROPOSAL

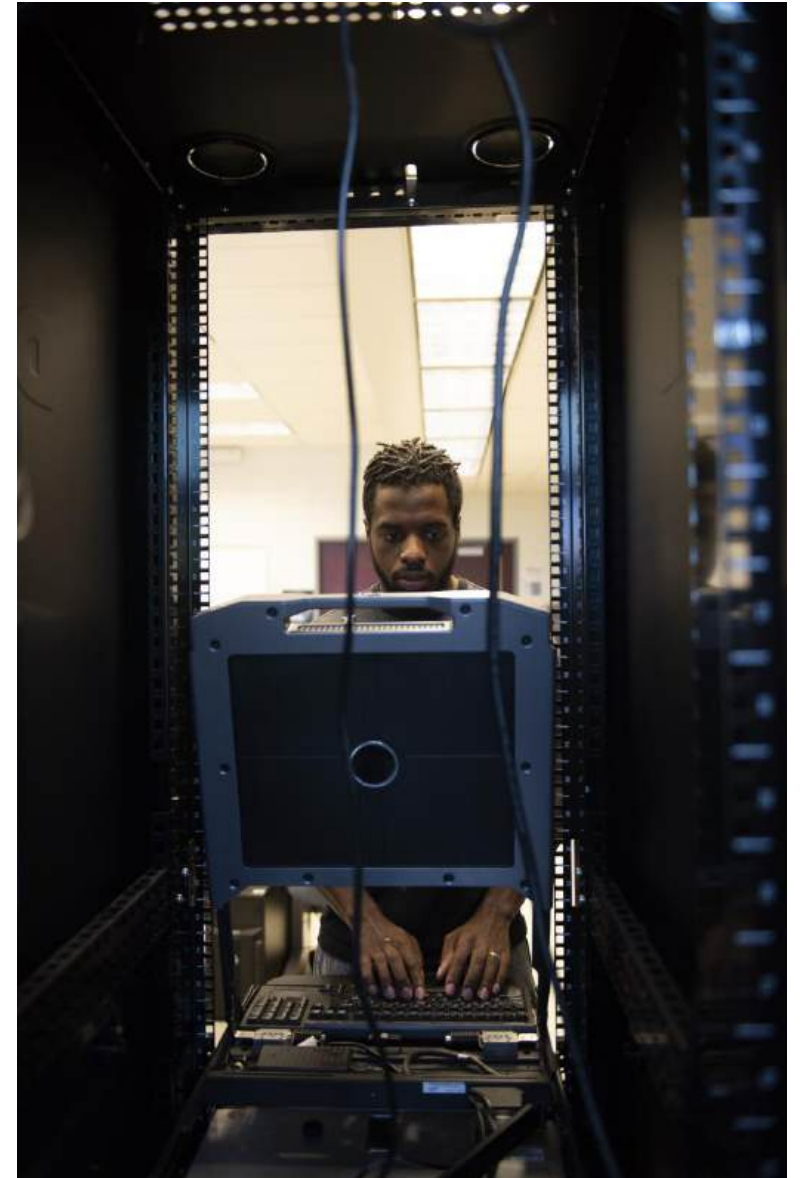




# 2025 Bond Proposal

The San Antonio area has experienced one of the fastest growing populations in the U.S., and this growth is expected to continue.

To address this growth, Alamo Colleges has called for a \$987 million bond for the May 2025 ballot.



ALAMO  
COLLEGES  
DISTRICT



# Preparing for Growth & Providing Access

## Projected Enrollment



With a projected enrollment of 100,000 by 2029, the Alamo Colleges District is committed to increasing access to education and training that aligns with our community and industries. This focus positions our learners for successful careers and economic mobility in an ever-changing workforce landscape.



ALAMO  
COLLEGES  
DISTRICT





# Preparing for Workforce Development

The Alamo Colleges District, the region's #1 provider of workforce education, partners with industry to offer programs that prepare students for industry jobs that are in demand.

The bond initiative will align our programming to our region's key sectors with expansions and new locations including schools and centers focused on the following key sectors:

 Engineering

 IT/ Cybersecurity / Emerging Technologies

 Automotive Technology

 Healthcare

 Applied Technology & Construction Trades

 Transportation



ALAMO  
COLLEGES  
DISTRICT



# 2025 Bond Proposal

## Strengthening Education & Workforce Connections

- Sector Based Investments in Academic and Workforce Programs
- Multi-Sector Bexar County Expansion
- Infrastructure Investments
- Proposed Projects Would Add:



ALAMO  
COLLEGES  
DISTRICT







# PROPOSED STRATEGIC AREAS OF FOCUS AND INVESTMENTS





# Preliminary Bond Breakdown

## Preliminary Bond Breakdown

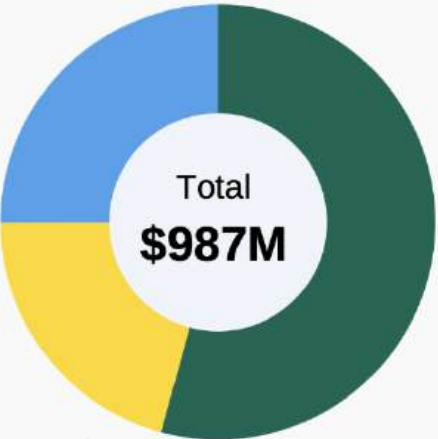
**New & Expanded Programs:**

\$535 M

**Infrastructure:** \$247 M

**Multi-Sector Investments:** \$205 M

**Total:** \$987 M



ALAMO  
COLLEGES  
DISTRICT





# Proposed 2025 Bond Projects

## Sector Based Investments – Academic and Workforce Programs



- New Locations

College	Building Focus	Location	Estimated Budget
<b>Engineering</b>			
Northeast Lakeview College	School of Engineering (Science, Engineering, and Technology Building)	NLC	\$75 M
San Antonio College	Architecture, Drafting and Engineering	SAC	\$25 M
<b>IT/Cybersecurity/Emerging Technologies</b>			
Northwest Vista College	School of Emerging Technologies (IT Management, Data Science and Cloud Computing)	Port San Antonio	\$70 M
<b>Automotive Technology</b>			
St. Philip's College	Center of Automotive Technology	SPC- MLK Campus	\$65 M
Palo Alto College	Automotive (T-TEN Program) & Heavy Machinery	Brooks	\$30 M
<b>Healthcare</b>			
San Antonio College	School of Nursing and Health Professions	Medical Center	\$95 M
<b>Applied Technology &amp; Construction Trades</b>			
Palo Alto College	Center of Applied Technology (Adv. Manufacturing, Heavy Equipment, Welding and Agriculture)	Brooks	\$65 M
St. Philip's College	Center of Construction Technology	TBD	\$50 M
Northeast Lakeview College	Career Technical Program Expansion	NLC	\$20 M
<b>Transportation</b>			
Districtwide	Innovation Center	Port San Antonio	\$30 M
EWD	Transportation Training Center	TBD	\$10 M






ALAMO  
COLLEGES  
DISTRICT



# Proposed 2025 Bond Projects

## Multi-Sector Investments – & Infrastructure Investments

<div>  Multi-Sector Investments </div>			
Northwest Vista College	Campus Expansion	NVC	\$60 M
Northwest ETC	Location Expansion for New Academic & Workforce Programs	Northwest ETC	\$70 M
North Central ETC	Development of Site for New Academic & Workforce Programs	North Central ETC	 \$75 M
<div>  Infrastructure </div>			
Districtwide	ACCESS Building	ACCESS Bldg.	\$50 M
Districtwide	Community Conference & Professional Development Center	TBD	\$60 M
Districtwide	IT/Cybersecurity/DPS		\$45 M
Districtwide	Asset/Land Acquisition/Sustainability		\$55 M
Districtwide	Project Management Fees		\$14 M
Districtwide	Physical Plant		\$23 M

 - New Locations



ALAMO  
COLLEGES  
DISTRICT





# 2025 Bond Proposed Project Sites

1 Alamo Colleges ACCESS HQ

5 Colleges

- Northeast Lakeview College
- Northwest Vista College
- Palo Alto College
- St. Philip's College
- San Antonio College

5 Education & Training Centers

- WETC, EETC, SETC, CWE, NWETC (New Build)

4 Proposed New Locations

- Brooks
- Port SA
- Medical Center
- North Central



# Planned Tranches to Support the CIP Program

Tranche	Planned Issuance	Planned Amount (In Millions)
Tranche 1	August 2025	\$223
Tranche 2	August 2026	\$218
Tranche 3	August 2027	\$198
Tranche 4	August 2028	\$174
Tranche 5	August 2029	\$174
Total All Tranches		\$987







## Next Steps

### **Prioritize**

- Prioritize requirements
- Align with planned Bond Funds issuance schedule

### **Build Execution Schedule**

- Align with prioritized requirements
- Will include A/E design and Construction Management at Risk contracts
- Will include miscellaneous support contracts





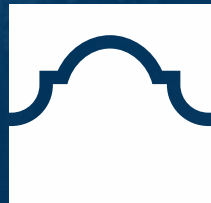
## Anticipated Contract Opportunities

Upcoming Contract Actions	Acquisition	Expiration	Acquisition Schedule
Program and Project Management	ACD contract	August 2026	TBD (within next 12 months)
Architect/Engineer Design	ACD contract	Augst 2026	TBD (within next 12 months)
Programming and Planning	ACD Contract	Augst 2026	TBD (within next 12 months)
Commissioning	Coop Purchase	N/A	N/A
Construction Manager at Risk (MTN)	ACD Contract	April 2028	N/A
Construction Manager at Risk (new)	ACD contract	N/A	TBD (target on board by SD or DD)
Furnishing and Equipment	Coop Purchase	N/A	N/A
Construction Materials Testing, Bldg Envelop, Geotech	ACD Contract	Feburary 2031	N/A
Construction Audit Services	ACD Contract	expired	TBD





# THANK YOU



ALAMO  
COLLEGES  
DISTRICT

