



ARLINGTON
NATIONAL CEMETERY
HONOR • REMEMBER • EXPLORE

Arlington National Cemetery Project/Program Update

Karen Durham-Aguilera, P.E.
Executive Director

&

COL Andrew Wiker, P.E.
Director of Engineering

S.A.M.E. Brief
August 7, 2025

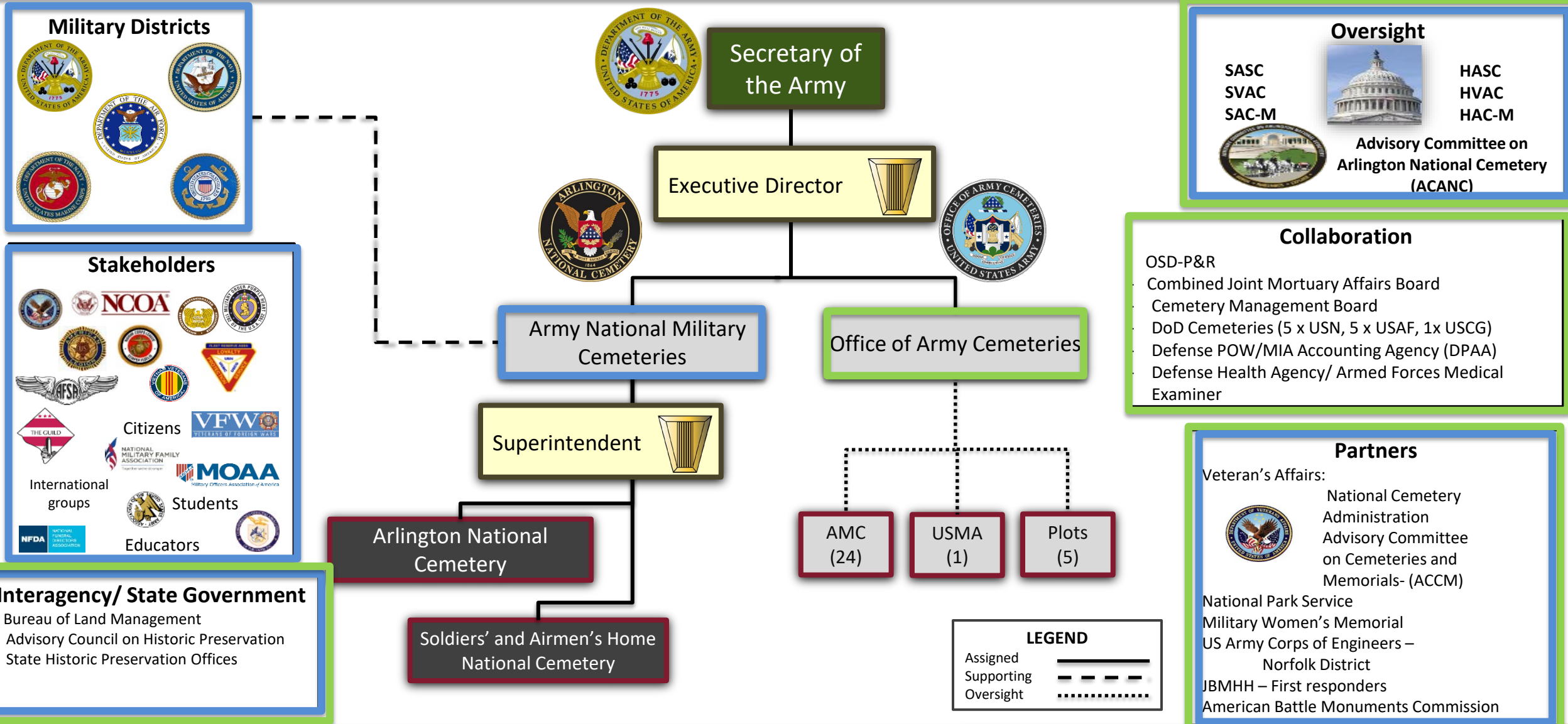
UNCLASSIFIED



ARLINGTON NATIONAL CEMETERY

HONOR • REMEMBER • EXPLORE

ANC/OAC Relationships



UNCLASSIFIED



ARLINGTON NATIONAL CEMETERY

HONOR • REMEMBER • EXPLORE

Vision, Mission, and Priorities

Great people honoring service and sacrifice to a Grateful Nation

Office of Army Cemeteries Mission



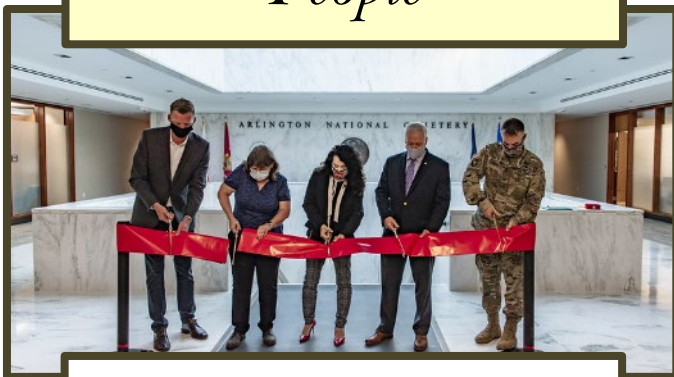
As the Army's cemeterians, OAC provides oversight and expertise for all Army cemeteries through policy, program management, inspections, training, and assistance, honoring those laid to rest in perpetuity.

Army National Military Cemeteries Mission



Arlington National Cemetery represents the American people for past, present, and future generations by laying to rest those few who have served our nation with dignity and honor while immersing guests in the cemetery's living history.

People



People are at the heart of everything we do

Modernization



Our cemeteries are a perpetual tribute to those at rest. We focus on **Modernization** to sustain and extend this tradition for future generations

Readiness



We deliver on our sacred mission by maintaining **Readiness** through the optimal management of our valuable resources



ARLINGTON NATIONAL CEMETERY

HONOR • REMEMBER • EXPLORE

Connecting Visitors to a Rich History

*Over 3M Visitors a Year
Open 365 Days*

- National Observances:
 - Memorial Day
 - Veterans Day
- Wreaths Across America
- Historic Tours

*Distinguished Visitor/
Public Events*

- Congressional Engagements
- ~200 Distinguished Visitor Wreath Ceremonies
- ~400 Honor Flight Buses
- ~3100 Wreath Laying Ceremonies
- Symbolic Visit for World Leaders



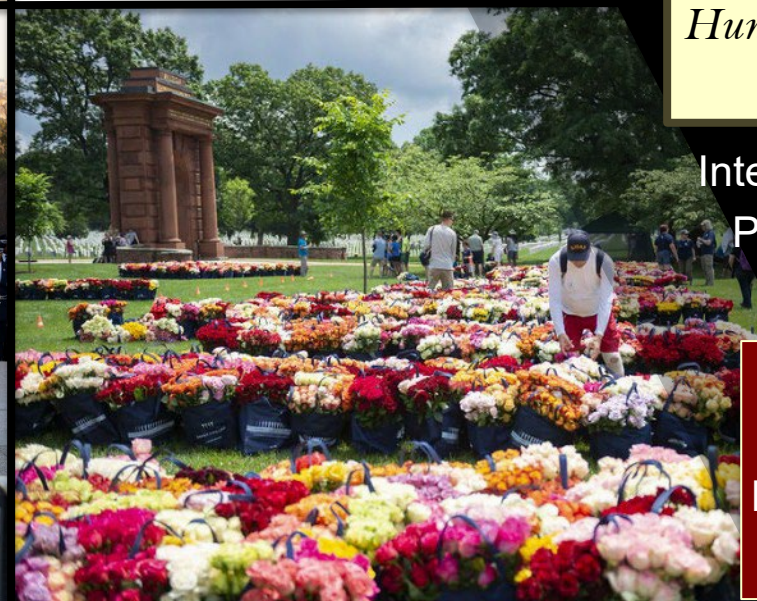
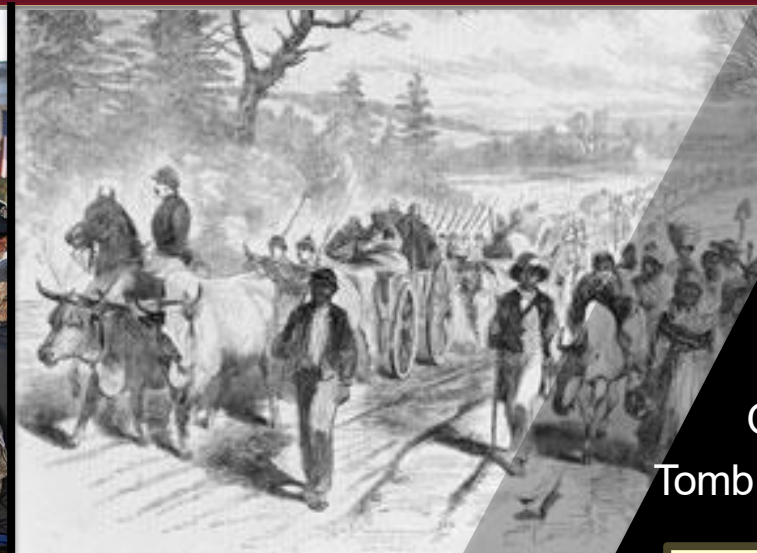
*Education and
Interpretation Program*

Webinars, Lectures, Blogs,
And Display Room Tours
Physical Interpretation Plan
Online Educational Modules
Tomb of the Unknown Centennial

*Hundreds of Engagements with
Congress and the Media*

International, National, & Local
Photographers & Film Crews
Responses to Queries

A continuous challenge
to strike a balance:
Funeral services (private) &
a National Shrine (public)





Maintaining These Hallowed Grounds

Providing Facilities To Support Our Mission

- Road Improvements
- Boundary Wall Repairs
- Columbaria Maintenance
- Memorial Amphitheater Interior Renovation
- Memorial Ave Improvements
- Utility Improvements
- Receiving Vault Preservation
- JFK Memorial Preservation
- Welcome Center Upgrades

Environmental

- Sustainability Efforts
- Millennium Stream Repair



Memorial Arboretum Level III Accreditation

639 acres and growing
~ 300 tree varieties

Two National Champion trees
Three State Champion trees
~ 9,800 native and exotic trees



Cultural Resources

Preservation of Cultural
Resources including
Monuments and Memorials
Partners with:
National Parks Service
The VA State Historic
Preservation Office
National Register





ARLINGTON NATIONAL CEMETERY

HONOR • REMEMBER • EXPLORE

Funeral honors and Funeral escort at ANC

10 USC §1491(a)



“any veteran, except when military honors are prohibited under section 985(a)”

service
members
required:

2

Military Funeral Honors at ANC (AR 600-25)

Casket team



Firing party



Bugler



Most enlisted Armed Forces members, some officers (WO1, CW2/3, O1-O3), and Veterans

Military Funeral Honors w/Funeral Escort at ANC (AR 600-25)



Marching Element:

- Band
- Color Guard
- Escort element



Caisson

Armed Forces members who are KIA, POW, or MOH
Senior Armed Forces NCOs and Officers (CW4/5 and O4 and above)

* Colonels or above of land forces

** General or Flag officers

69-103+

Minimum
shown

* Caparisoned horse

** Cannon salute



Return of the Caisson Support for Military Honors with Escort Funerals at Arlington National Cemetery

After a 2-year suspension, the U.S. Army announced on 08 April 2025, the limited reintegration of the caisson into funeral services at Arlington National Cemetery. The initial phase provides the use of the caisson as a conveyance for two funerals per day, up to 10 per week, beginning June 2. Caisson support will increase to four funerals per day, up to 20 per week, with increased herd and facilities, estimated Spring 2026.

Eligibility for Caisson Support During the Initial Phase

- Service members killed in action, regardless of rank;
- Recipients of the Medal of Honor or the Prisoner of War Medal (POW), regardless of rank;
- Senior noncommissioned officers (E-9);
- Senior warrant officers (CW-5);
- Senior commissioned officers (O-6 and above)



ARLINGTON NATIONAL CEMETERY

HONOR • REMEMBER • EXPLORE

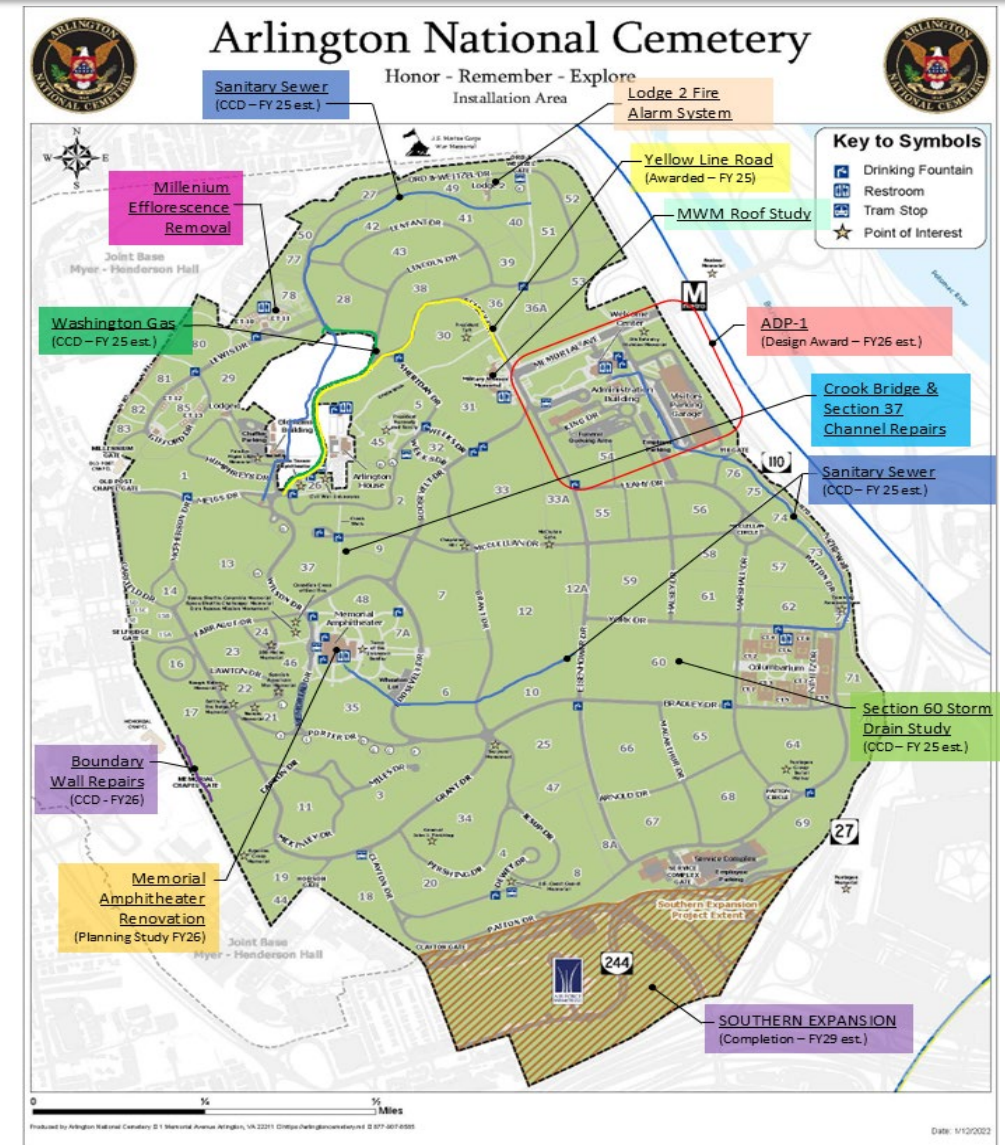
ANC Projects

Projects under Construction

- Defense Access Road (DAR): Completion 2026
 - **Federal Highways/Kokosing Construction**
- Southern Expansion Phase II: Completion late 2026
 - **Manhattan Construction**
- Washington Gas Line: Completion est. AUG 2025
 - **NPL Construction**
- Sanitary Sewer Repairs: Completion est. SEP 2025
 - **Metro Paving Corporation**
- Boundary Wall Repairs: Completion est. JAN 2026
 - **Pinnacle Software Consulting, Inc.**
- SAHNC Boundary Fence Repairs: Completion est. OCT 2025
 - **Sustainable Facilities Management Services**
- Yellow Line Project: Contract awarded in JUN 2025
 - **Metro Paving Corporation**
- Tram Emergency Repairs: Completion estimated in JUL 2025
 - **Miami Construction**

Projects in Design

- ADP-1 EA and Section 106 Consultations
 - **Benham-Stanley**
- Section 60 Storm Drain Study
- Crook Bridge & Section 37 Channel Repairs study
 - **Prime AE**
- Millennium Efflorescence Removal
 - **Woolpert RS&H**





ARLINGTON NATIONAL CEMETERY

HONOR • REMEMBER • EXPLORE

Southern Expansion (SE) Program Overview

Proposed

Existing cemetery

In-ground interments

Columbarium

Air Force Memorial

Future 9/11
Memorial
Visitor
Education
Center

ANC
Operations
Complex

Garage

Existing

Southgate Road

ANC Operations
Complex

Air Force
Memorial

Columbia Pike

S Joyce Street

Washington Boulevard/VA27

Pentagon
South
Parking

- Adds 80K(+) burial opportunities
- Air Force Memorial (AFM) is the centerpiece of Southern Expansion
- Pedestrian access to ANC/AFM via Columbia Pike
- Operations (Ops) Complex moves south of Columbia Pike
- Phased construction, risk-based total cost estimate

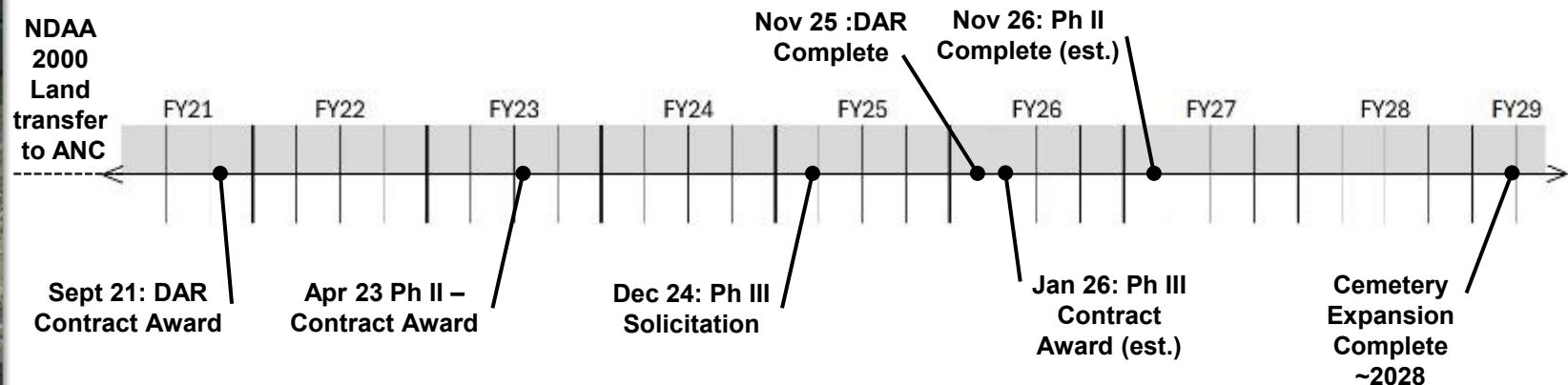
Program Milestones

Defense Access Roads / Ph I (Horizontal): Sep 2021 – Spring 2026

Ph II (Operations Complex): Apr 2023 – Nov 2026

Ph III (Cemetery Expansion: Jan 2026 – Dec 2028 (est.))

NDA
2000
Land
transfer
to ANC



UNCLASSIFIED



ARLINGTON NATIONAL CEMETERY

HONOR • REMEMBER • EXPLORE

Southern Expansion (SE)



UNCLASSIFIED



Upcoming ANC Projects

Projects in Acquisition

- Southern Expansion Phase III: Award
 - **Award estimated early FY 26**
- Area Development Plan (ADP-1) Design:
 - **Development of RFP for SATOC starting AUG 2025**
- Memorial Amphitheater Feasibility Study
 - **RFP being prepared for Q1 FY26 award**
- Millennium Guardrail
 - **RFP being prepared for FY25 award**
- Lodge 2 Fire Alarm System
- SAHNC Lodge EA Study
- MWM Roof Study and Redesign
 - **RFP being prepared for Q1 FY26 award**

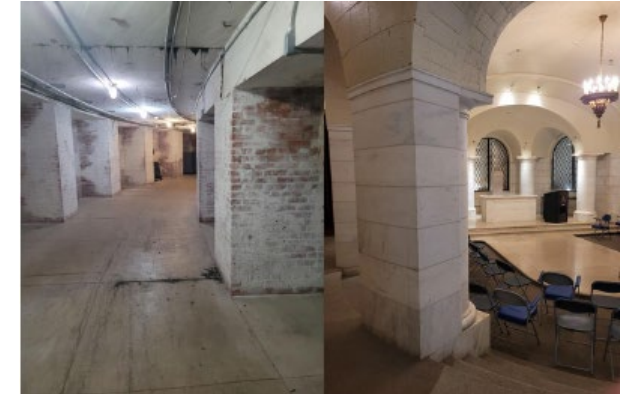
Potential FY26 Projects

- Horticulture Yard Fence and driveways
- New Service Center Move-in contract
- Crooks Bridge Repair and Section 37 Concrete Channel Repair Construction
- Grant/McClelland Drive road repair design
- Memorial Ave Gate restoration
- Columbarium utility recapitalization and fountain feasibility study
- Columbarium & Niche Wall Expansion

Example of Small Projects



Example of Large Projects





Memorial Ave Land Development

- **Background:**

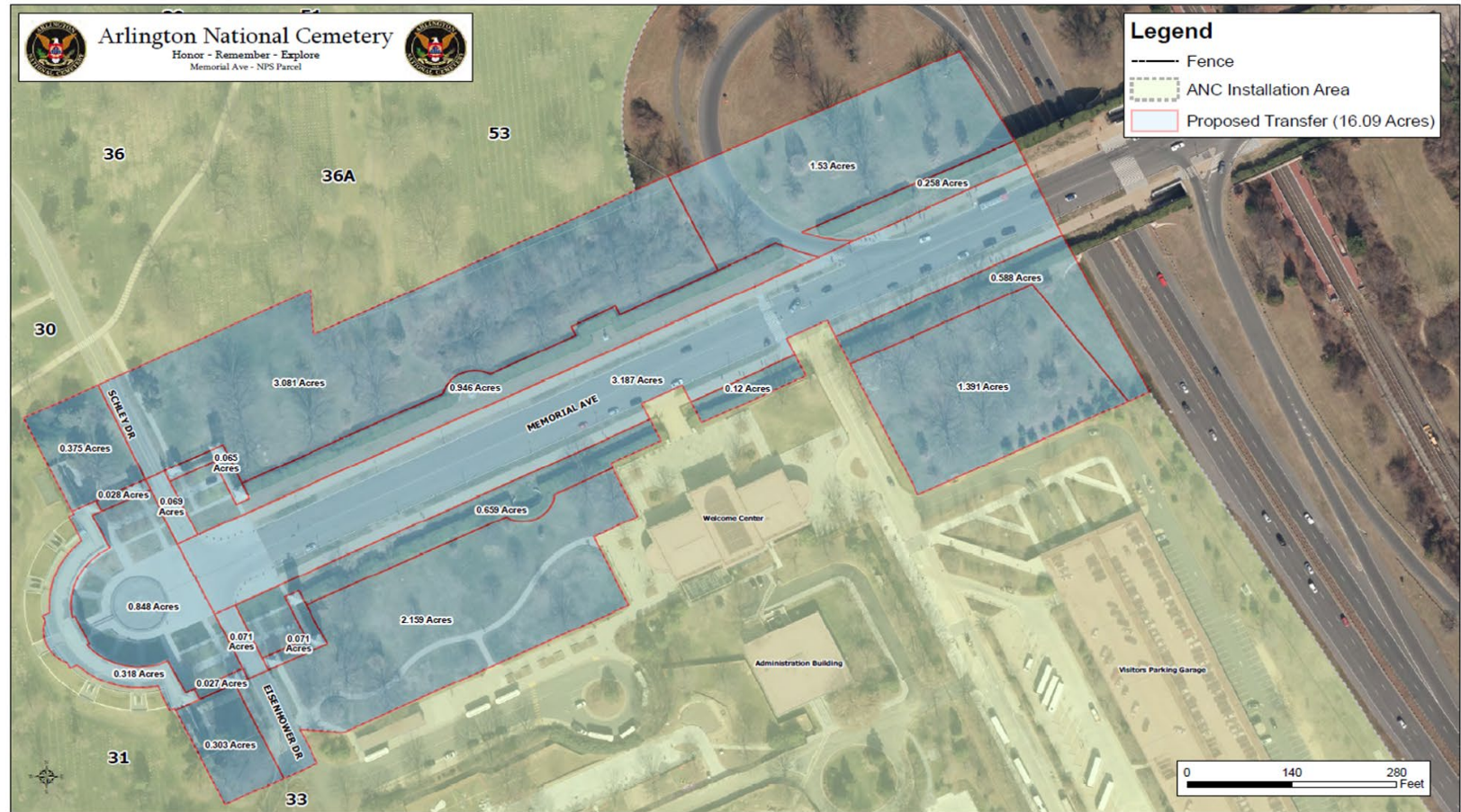
- 2020 NDAA transferred western Memorial Ave and adjacent land from National Park Service (NPS) to Army

- **Issues:**

- Crowding in the Welcome Center impacting visitor experience space
- Vehicle and pedestrian conflicts along Memorial Ave
- Vehicle and pedestrian conflicts along Eisenhower Ave

- **Feasibility and NEPA studies to:**

- Potentially transform undeveloped space north of Memorial Ave and south of the Parking Garage into burial opportunities.
- Construct a separate visitor screening facility
- Construct a new Welcome Center
- Construct an alternate entrance to the parking garage to reduce vehicle/pedestrian conflicts
- Improve aging Tram Circle area



Document Path: O:\C106\GIS\1. Data\Vector\Internal Data Collection\MXD\Kevin_Melson\Real_Property\20190211_ANC_Installation_NPS_Property_Memorial_Ave_11x17_Transparent_Acquisition.mxd

*This product has been created with the highest degree of accuracy possible and is intended to serve as a reference. Errors and omissions may exist.

It shall be the sole responsibility of any contractor, architect, engineer, agency, etc. to verify the accuracy and/or completeness of the location of all underground utilities shown on this drawing prior to any construction activity.

Coordinate System: NAD 1983 StatePlane Virginia North FIPS 4501 Feet

Date: 2/11/2019



Area Development Plan (ADP1)



EXISTING AERIAL

ADP1 - Memorial Ave Entry Corridor Update

- Draft EA & Section 106 completed March 2025 (ongoing consultations on Section 106)
- Contract Acquisition for Designer began July 2025
- EA will be completed end of 2025
- Award anticipated end of 2026

ADP1 - Memorial Ave Entry Corridor Update

- Contracts awarded for Traffic Study in 2023 and A-E Feasibility Study in 2024
- Traffic Study completed April 2024 (**Leidos**)
- Architecture & Engineering Firm (A-E) Field Visit April 2024 (**Benham-Stanley**)
- A-E Design Charrette Completed May 2024 (**Benham-Stanley**)
- A-E Feasibility Report & DOPAA completed September 2024 (**Benham-Stanley**)
- CFA approves amendment to master plan for ADP 1 (November 2024)
- NCPC approves amendment to master plan for ADP 1 (March 2025)



POTENTIAL RENDERING



ARLINGTON NATIONAL CEMETERY

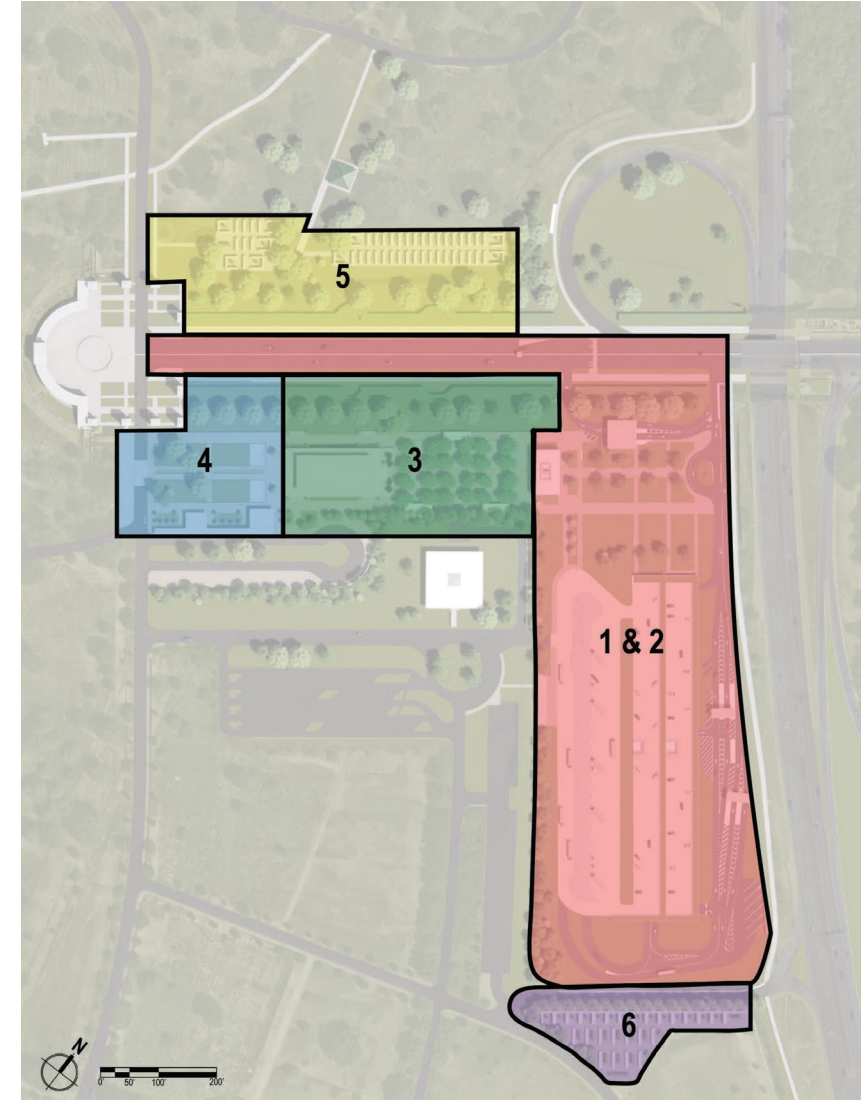
HONOR • REMEMBER • EXPLORE

Layout of plan & Zone Map



LEGEND:

1. MICRO-MOBILITY HUB
2. NEW ENTRANCE DRIVE
3. VOS
4. FUNERAL LOOP/ BUS DROPOFF
5. FUNERAL SCREENING
6. RIDESHARE LOOP
7. ARLINGTON MEMORIAL TRAIL
8. VEHICLE SECURITY SCREENING
9. TICKETING/EXIT BOOTH
10. ARRIVALS PLAZA
11. EXISTING CURB AND HEDGE ROW CUT
12. AFTER HOURS EXIT TURNSTILE
13. PEDESTRIAN SCREENING FACILITY
14. PARTERRE
15. WELCOME CENTER
16. RESTROOMS
17. TRAM TICKETING OFFICE
18. TRAM SHELTER
19. INTERPRETIVE GARDEN
20. PEDESTRIAN CROSSWALK & SIGNAGE WALL
21. SIDEWALK TO MWM OBSERVATION DECK
22. SIDEWALK TO PRESIDENT TAFT GRAVESITE
23. COLUMBARIA (6,000)
24. NICHE WALLS (1,500)
25. EXISTING BIKE SHARE AREA
26. EXISTING ARLINGTON MEMORIAL TRAIL
27. PERIMETER FENCE
28. COLUMBARIA (3,500)
29. LANDSCAPE BUFFER
30. RESTROOMS
31. NEW WELCOME CENTER CHILLER
32. NEW ADMINISTRATION CHILLER
33. PEDESTRIAN & BICYCLE CROSSWALK
34. UTILITY CORRIDOR
35. COMMITMENT SHELTER & SIDEWALK FROM ORD & WEITZEL DR TO COLUMBARIA
36. SHIFTED INTERSECTION OF ROOSEVELT DR NEAR EISENHOWER DR
37. GRANITE PAVEMENT LANE NARROWING AT POLICE VOS



UNCLASSIFIED



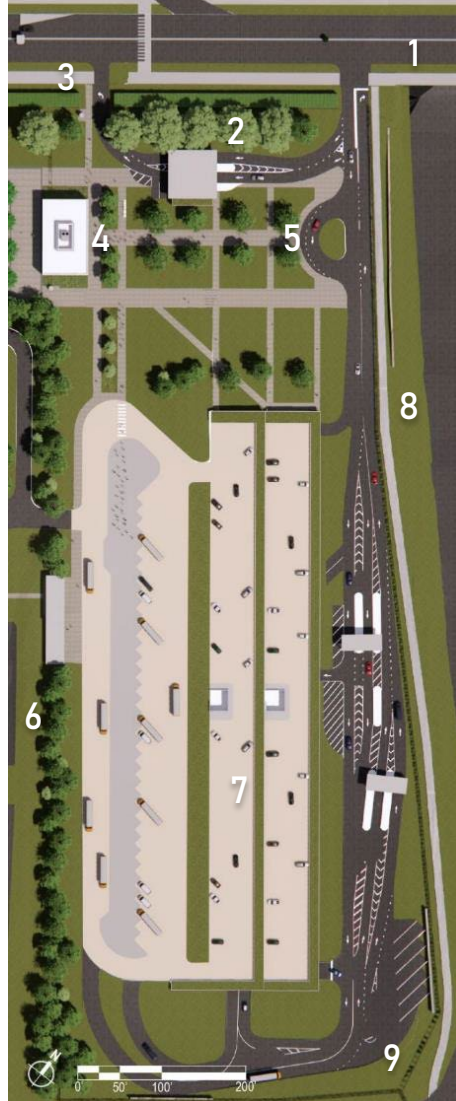
1. New Entrance Road for ANC employees and funeral attendees entering the cemetery
2. Granite paver crosswalk for pedestrian / bicycle wayfinding to Arrivals Plaza.
3. Replacing Mobile Guard Trailer with full screening capability in a covered area
4. Minimum of 2 lanes for drop off area for ride share with larger stacking capacity



5. Vehicle entrance moved to east (yellow square)
6. Preserve existing holly hedge gap (blue arrow). Till gap in holly hedge (orange arrow).



Arrival/Parking/Pedestrian Screening



1. New vehicle and bus entrance to parking garage allows for a more logical flow for POVs since entrance and exit will be at same location
2. Full screening capability for all vehicles entering cemetery
3. Screened vehicles access point into cemetery or exit as a reject lane.
4. New pedestrian screening facility for all modes of transportation – separate from Welcome Center.
5. Rideshare drop-off. Pedestrian gathering area for large tour groups.
6. New Restrooms.
7. Existing parking garage structure to remain but modified for east entrance and additional bus capacity.
8. Accommodates Arlington County planned Arlington Memorial Trail.
9. Additional bus parking.



ARLINGTON NATIONAL CEMETERY

HONOR • REMEMBER • EXPLORE

Zone 3

Welcome Center & Central Plaza



1. Pedestrian Screening facility
2. Central Plaza bosque, gathering area for groups. New layout allows large visitors to bypass the Welcome Center both upon entering and existing.
3. The new Welcome Center, will not have large sky light, and will allow the display of more curated items
4. Landscaping buffer to Administration Building

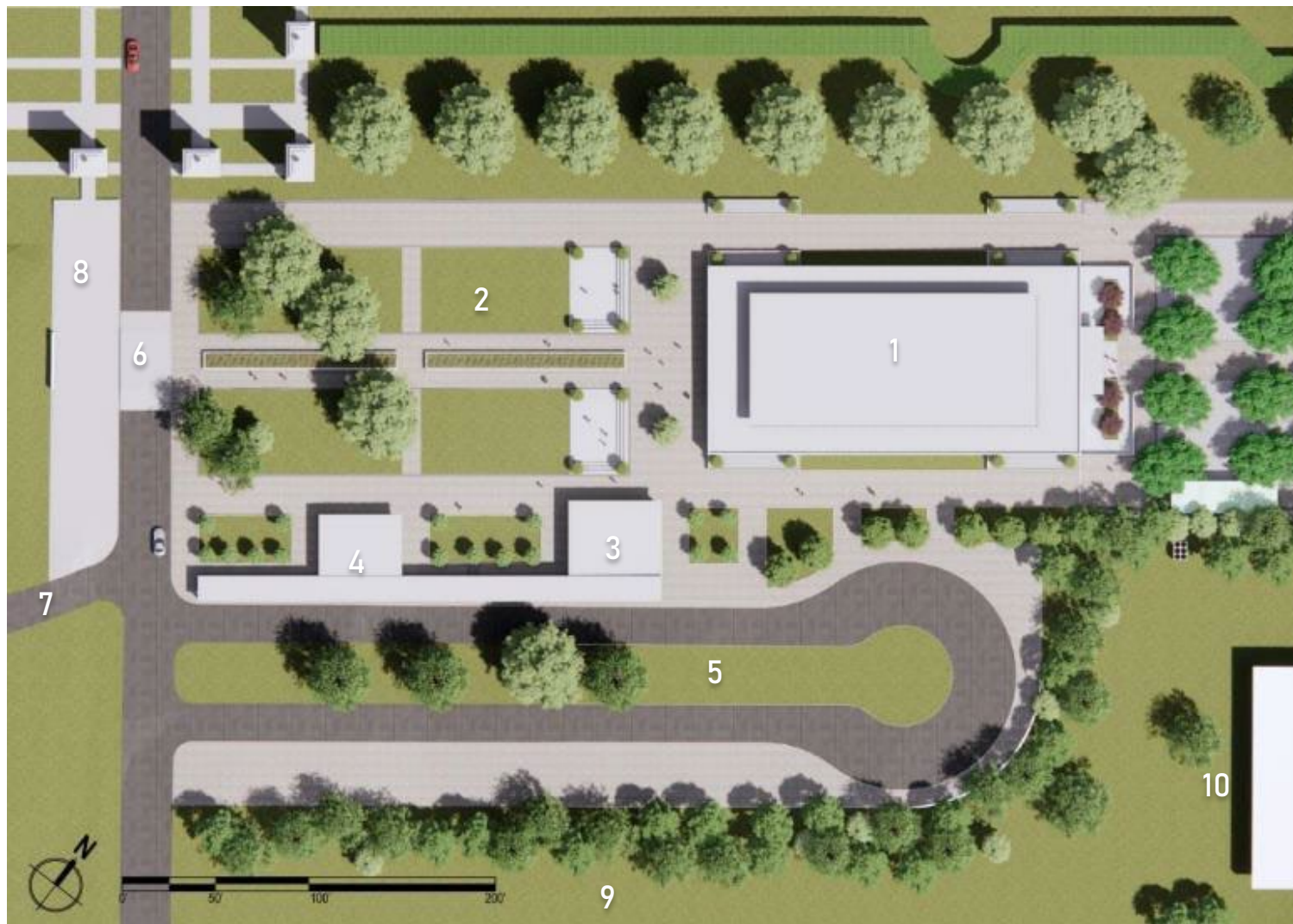


ARLINGTON NATIONAL CEMETERY

HONOR • REMEMBER • EXPLORE

Zone 4

Area West of Welcome Center



1. New Welcome Center
2. West Plaza, with interpretive exhibits.
3. Restrooms
4. Tram Operations – moved out of crowded Welcome Center
5. Reconfigured tram loop
6. Raised crosswalk – to slow traffic and on Eisenhower.
7. Roosevelt Dr.
8. Wide walkway and wayfinding, creates more of a decision point for visitors turning left and right vice current signage and pavement marking
9. Landscaping buffer to funeral queuing lanes
10. Existing Administration Building

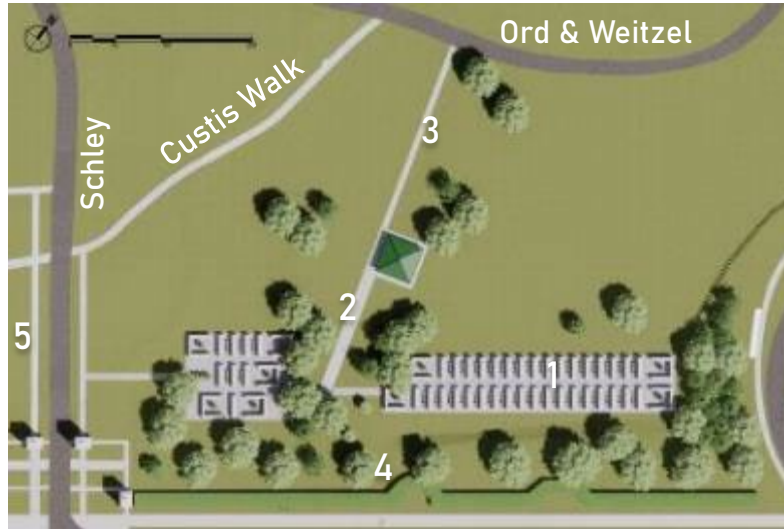
UNCLASSIFIED



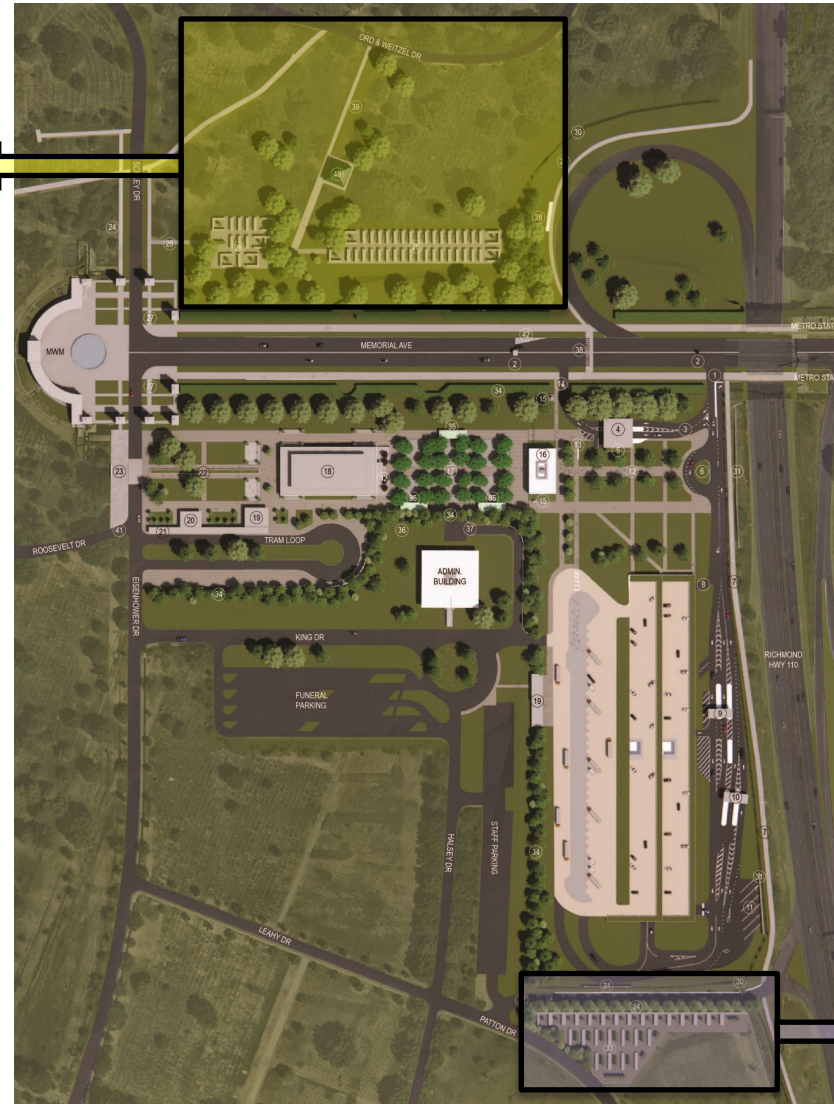
ARLINGTON NATIONAL CEMETERY

HONOR • REMEMBER • EXPLORE

Zone 5 & 6 North & South Flex Areas



1. ~10,000 niches potential .
2. Utility corridor
3. Committal Shelter
4. Preserve trees.
5. Sidewalk on west side of Schley Dr. leading to Custis Walk and Taft gravesite.



1. ~5,500 niches potential
2. Relocate access road
3. Landscaping and retaining wall buffer to Parking Garage



UNCLASSIFIED



Questions?



ARLINGTON
NATIONAL CEMETERY
HONOR • REMEMBER • EXPLORE



Thank You for Your Time

Karen Durham-Aguilera, P.E., Executive Director
Office (703) 614-0567
Karen.L.Durham-Aguilera.civ@army.mil

COL Andrew Wiker, P.E., Director of Engineering
(703) 614-0169 (office)
andrew.j.wiker.mil@army.mil

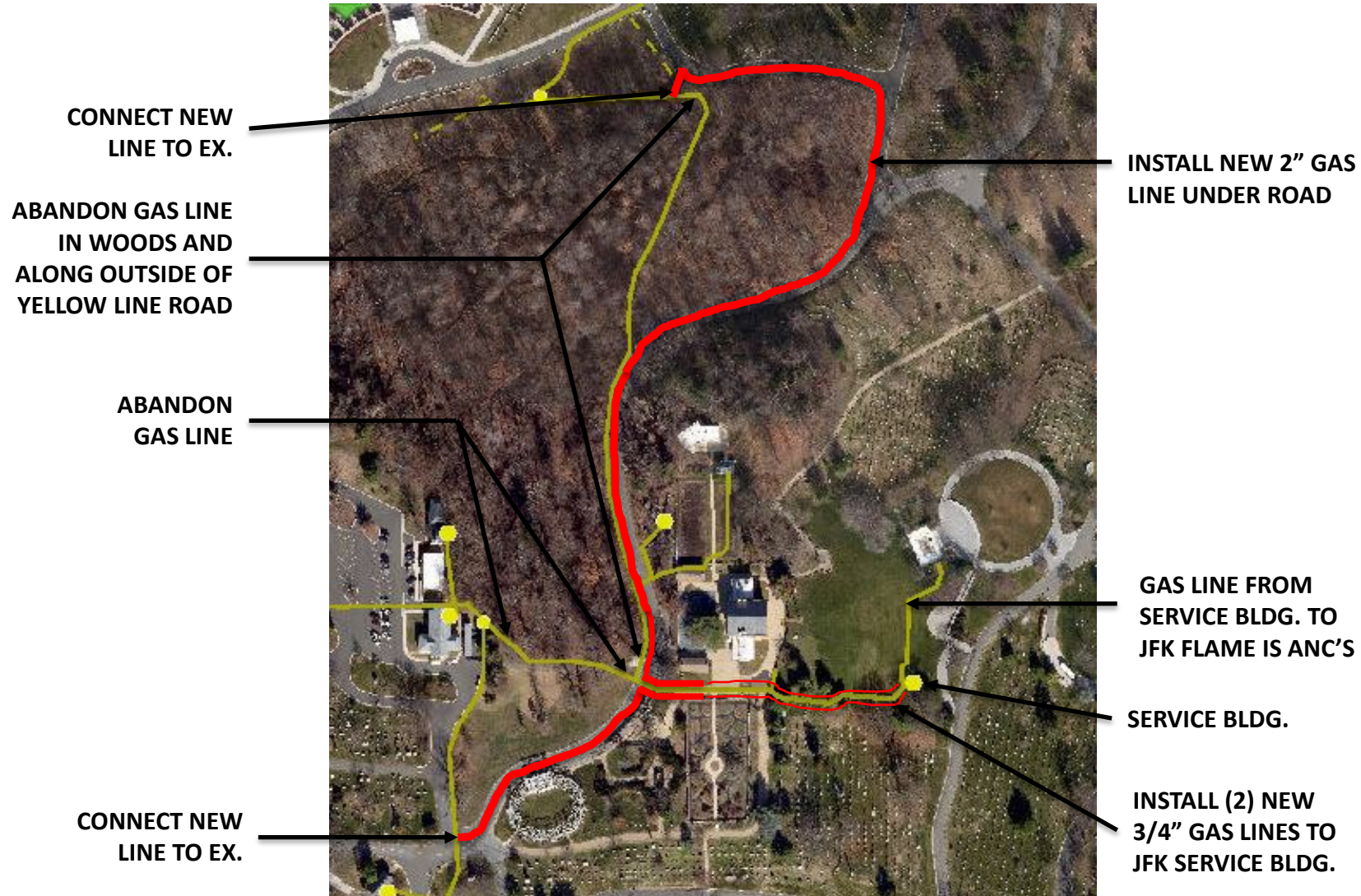
UNCLASSIFIED



ARLINGTON NATIONAL CEMETERY

HONOR • REMEMBER • EXPLORE

Washington Gas Line

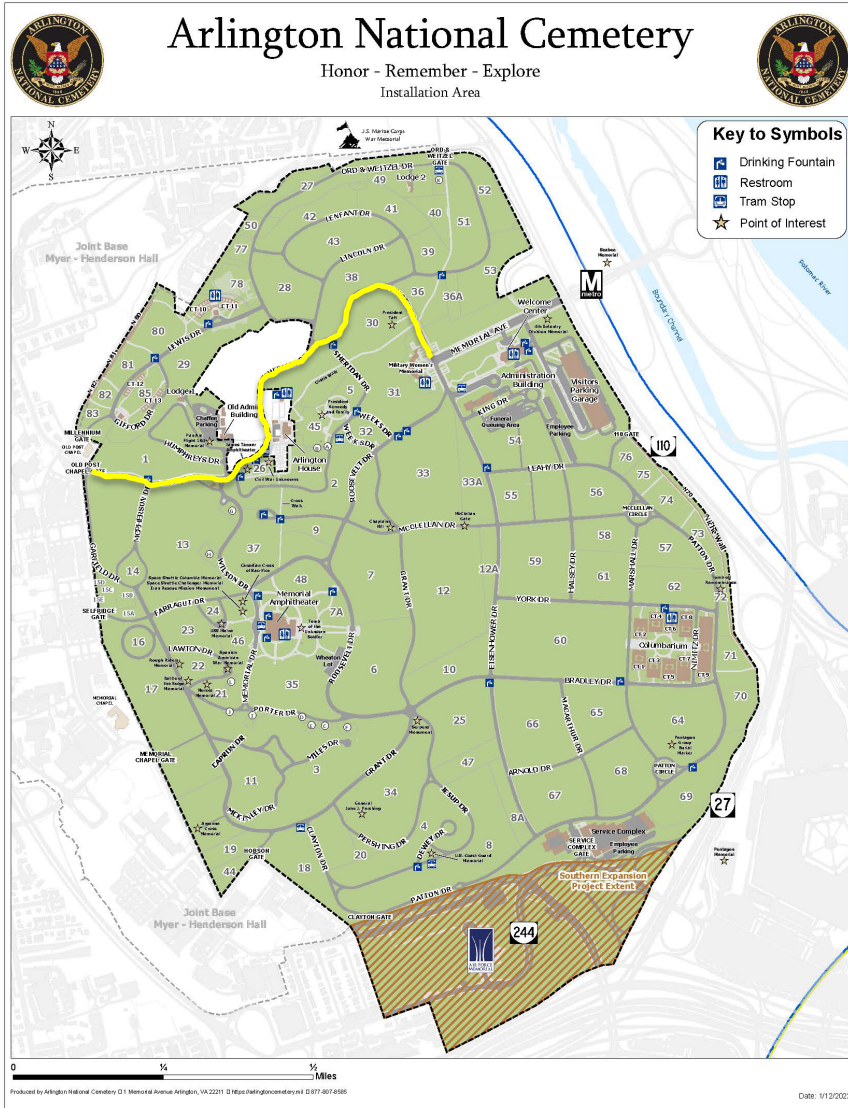




ARLINGTON NATIONAL CEMETERY

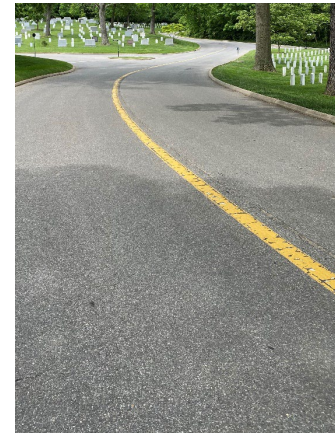
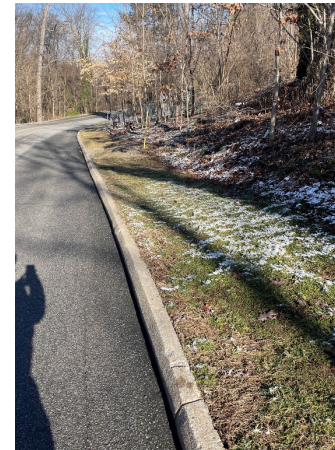
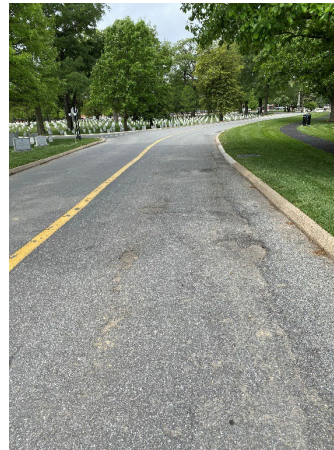
HONOR • REMEMBER • EXPLORE

Schley, Sherman, Meigs Roads (Yellow Line Road Project)



Meigs, Sherman, Schley Roads (Yellow Line Road Project)

- Contract awarded 15 JUL 2025 (**Metro Paving**)
- Full Depth Road Reconstruction
- Sidewalk added from Arlington House to Sheridan Drive



UNCLASSIFIED



ARLINGTON NATIONAL CEMETERY

HONOR • REMEMBER • EXPLORE

Southern Expansion Project Phasing



* Future 9/11 Visitor Education Center will be constructed by a 3rd party/non-profit

Acronyms:

CEA – Cemeterial Expenses Army funds

CCD – Contract Completion Date

MILCON – Military Construction funds

Phase I / DAR (CCD: Nov 2025):

- Defense Access Road, (MILCON funded): creates the contiguous area to maximize burial opportunities by consolidating over 30 underground utilities, realigning Columbia Pike, shortening S. Joyce Street, and constructing S. Nash street.
- South Parcel (Turnover: Apr 2023, CEA funded): created efficiencies through the horizontal development of South Parcel
- Service Tunnel (Turnover: Apr 2025, CEA funded): tunnel beneath Columbia Pike providing access between operations complex and the cemetery

Phase II (CCD: Nov 2026, CEA Funded):

- Ph IIA. Operations Complex: constructs new Ops Complex (vehicle access point, parking garage, admin space, warehouses, maintenance bays, and equipment parking) in the South Parcel
- Ph IIB. West Access: constructs the access road between the South Parcel and the existing cemetery grounds.

Phase III (CCD: TBD, CEA Funded):

- Demolishes the existing Service Complex
- Expands the cemetery with 80K plus in and above ground burial opportunities
- Constructs Pedestrian Screening Facility
- Reconstructs the historic Sheridan Gate
- Integrates the Air Force Memorial into ANC grounds

UNCLASSIFIED