



Harpreet Ghotra, CEO
hghotra@tejy.com
www.tejy.com

About Us

- 
- Tejjy is a women-owned, professional A/E company, established in 2006. We specialize in:
 - A/E Services: Structural | MEP | CAD
 - BIM Services: Structural | Architectural | 3D Laser
 - Construction Management Services + Inspectors
 - Facilities Operations + Asset Management
 - Revit Family Creation

Corporate Data

NAICS Code

- 541310: Architectural Services
 - 541330: Engineering Services
 - 541340: Drafting Services
 - 541350: Building Inspection Services
 - 236220: Commercial & Institution Building Inspection.
 - 541519: Other Computer Related Services
- UEI: KLJZZ55E6W87
 - CAGE CODE: 4WUF7
 - DUNS : 808173236
 - ISO: 9001, 27001, 20000
 - GSA SCHEDULE: 47QRAA21D008C



Our Services

Design Services

- Architectural Structural
- MEPF Interior

BIM Modeling

- Modeling for All Trades
- VDC Services
- BIM Coordination
- Clash Detection and Resolution

Scan to BIM

- Point Cloud to 3D BIM modeling
- Point cloud to 2D drawings

3D Laser Scanning

- As-Built Documentation
- 360 Virtual Reality Capture
- Construction Documentation
- Aerial Site Documentation

- **Permitting**
- **3rd Party Design Review**
- **QA/QC Inspection**

Documentation

- MEPF Shop Drawings (prefab/spool drawings)
- Architectural and Structural Shop Drawings
- Quantity Estimation

- **Design-Build Construction** – End-to-end project delivery.
- **Piping & Steam Systems** – Industrial, utility, and process piping.
- **HVAC** – Energy-efficient system design and installation.
- **Odor Control** – Ducting, scrubbers, and ventilation solutions.
- **BIM Coordination** – Integrated 3D modeling for MEP systems.

Our Scanners

RTC 360



BLK 360 G-1



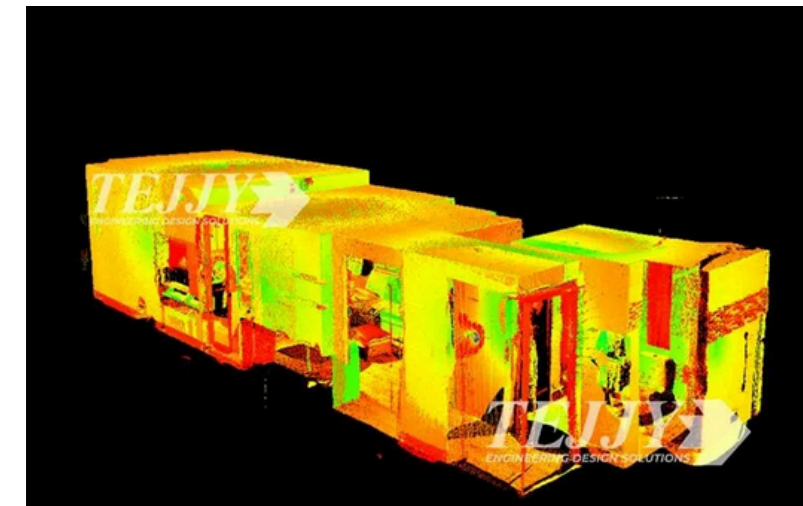
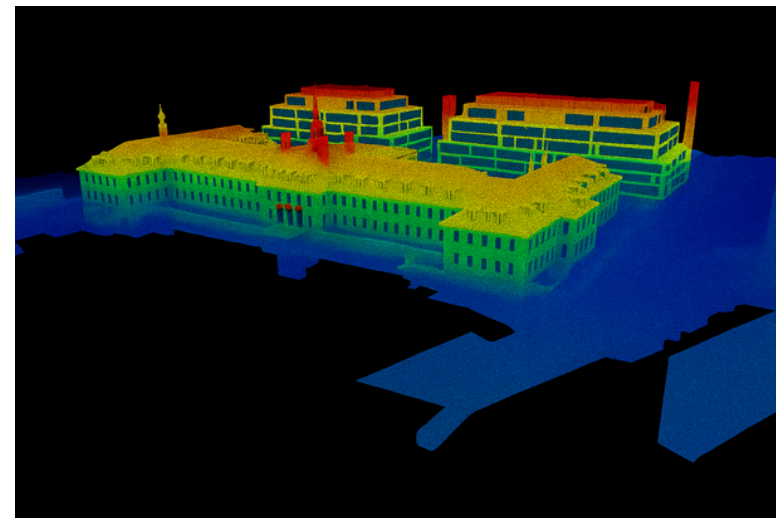
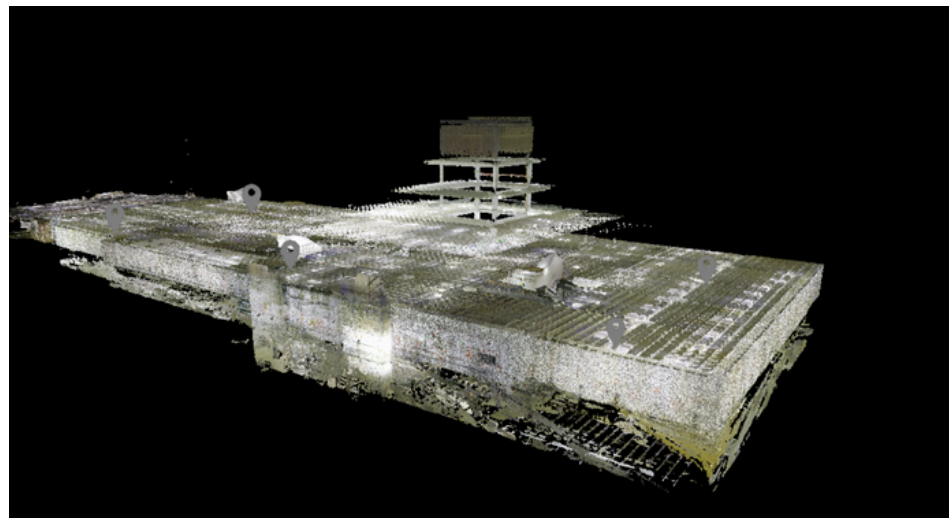
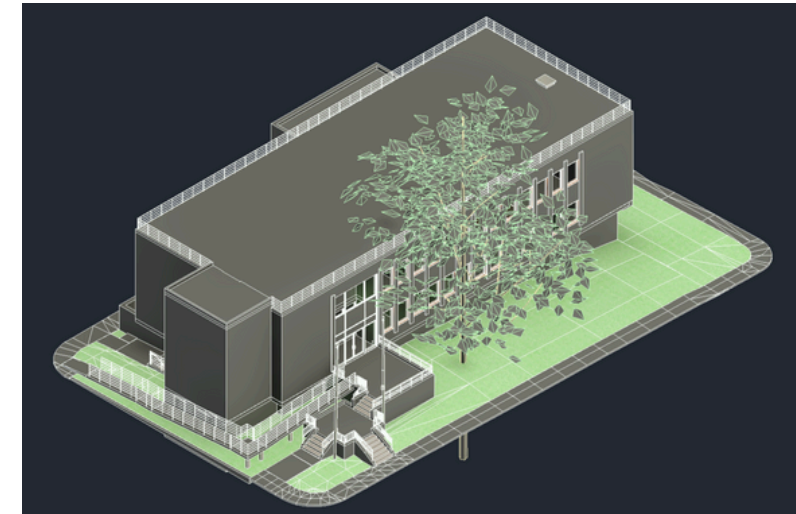
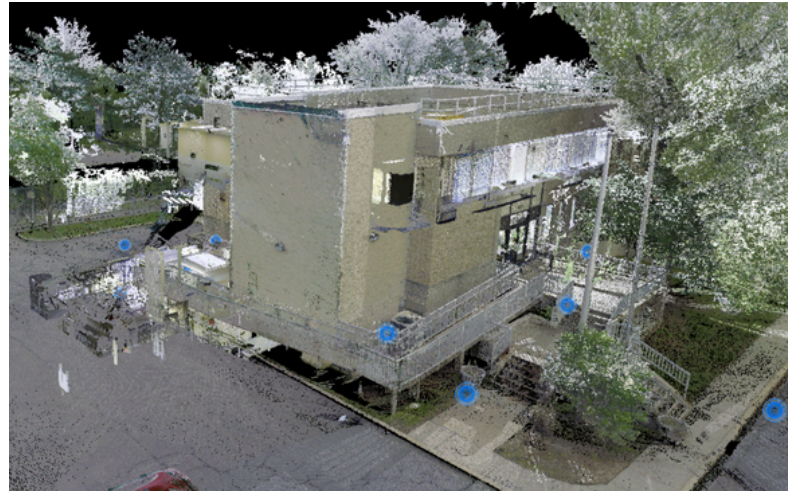
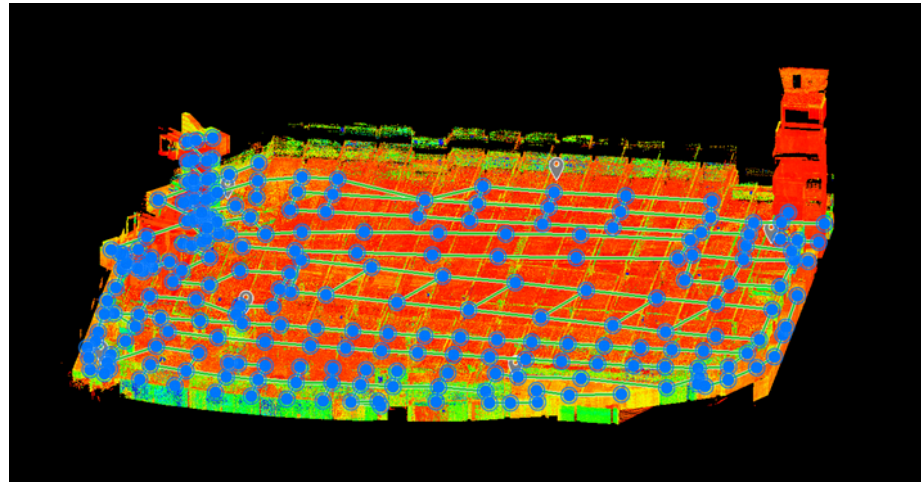
Matterport Pro 3



RICHO Theta



Data Captured



Government Projects

- DC Water- Water Smart Alliance
- Montgomery County, MD Parking Garages (IDIQ)
- Canine Center – Dept of Homeland Security
- Library of Congress - JOHN ADAMS BUILDING
- GSA Open Area to Private Office
- DHS – Cyber security Infrastructure Security Agency Headquarters
- CISA Headquarters - Dept of Homeland Security
- White Oak Campus - GSA

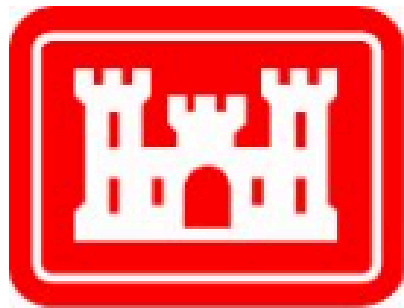
Commercial Projects

- AWS Quail Ridge Data Center - Amazon
- Microsoft MNZ-03 Data Center - MC Dean
- AWS DCA 064 Data Center - Amazon
- Big Walker Mountain Tunnel & East River Mountain Tunnel -
- Milton Eisenhower Library Renovation - JHU
- George Town University - Whiting Turner
- Montgomery County Police Station - Whiting Turner
- Pepco 3-Substation - Black & Veatch
- John Adams Building – Library of Congress

GOVERNMENT PARTNERS



Homeland
Security



**US Army Corps
of Engineers®**



TEJJY TEAMING PARTNERS





THANK YOU

