



# CDM Smith



**Paul Culberson**  
Client Service Leader  
December 2025

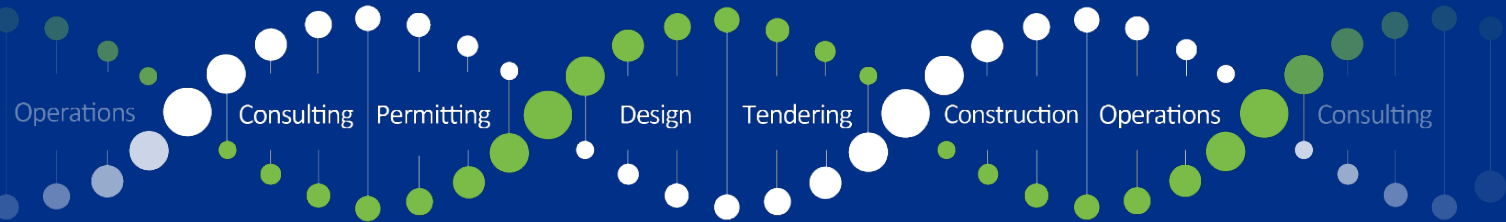


# Thinking ahead

Founded

1947

Employee owned



Delivering solutions around the world.



Revenue

\$ 1.6 billion

Employees

> 6900

Over 130 Office Locations Across the U.S. and Worldwide





# What do we do?



## What We Do:

Facilities  
Energy  
Water  
Transportation  
Environment



## How We Work:

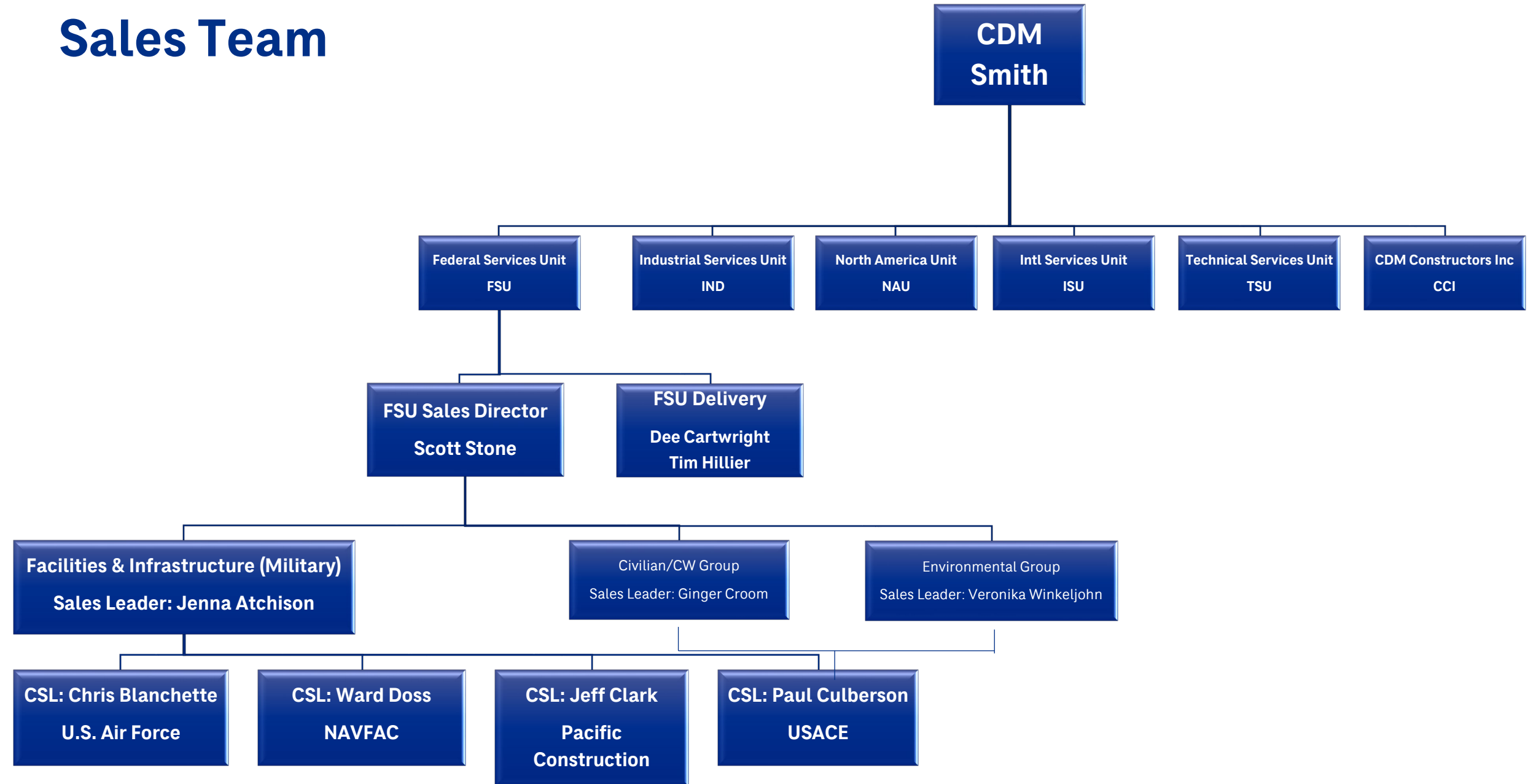
Consulting  
Design  
Construction  
Program Management



## Who We Work With:

Federal Government  
Development Assistance  
Industry  
Municipal Governments

# Sales Team



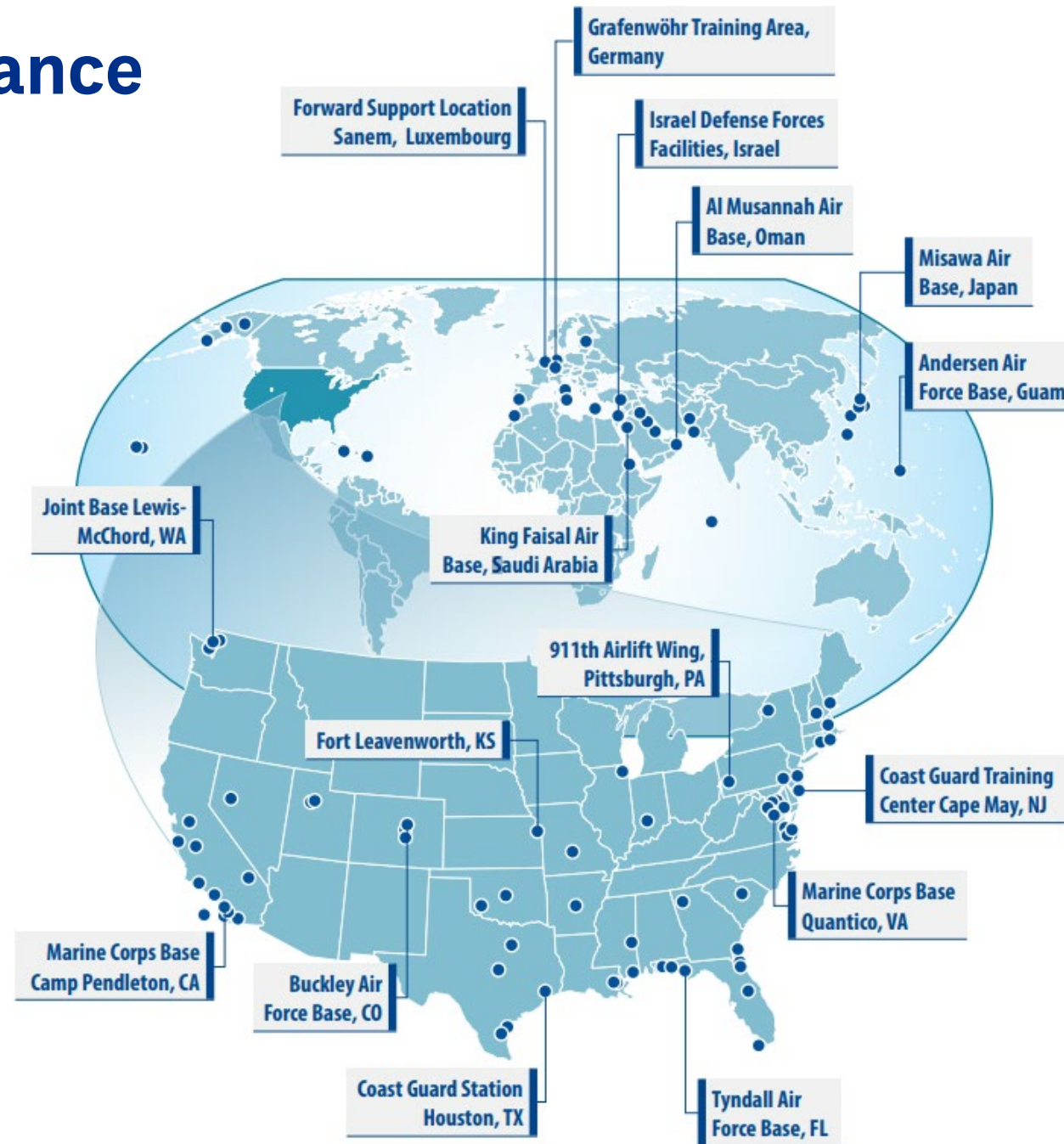




# Experience & Qualifications



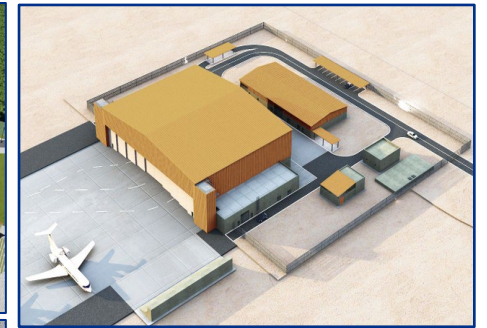
# Sample At-A-Glance





# Design Experience

- CONUS
  - AFCEC (Military Design, DB Projects)
  - USACE (Military Design, DB Projects)
  - NAVFAC (Asset Mgmt, Utility AE, DB Projects)
- Germany – ORTC, Powerlines, Barracks, Low observable F22 hangar, Veh Maint. Fac.
- Luxembourg – DABS, Warehouses
- Belgium – School Music & Arts Building
- Saudi Arabia – F-15 Beddown
- Oman – Hangars
- UAE – Al-Dhafra Phantom Complex, Hospital Renovation





# Construction Experience

- CONUS
  - AFCEC (Andrews AFB, Newington DFSP Demo)
  - USACE (JBLM, Fort Irwin, Omaha Levees, COVID ACF)
  - NAVFAC (29 Palms, Quantico, JRB New Orleans, JAX, Camp Pendleton)
  - USCG (Cape May, Station Houston)
- Israel – Hardened Aircraft Shelters, DFAC, Shoot House, Warehouses, Energy Center, Ammo Storage Facility
- Saudi Arabia – F-15 Beddown
- Oman – Hangars
- Pakistan – Earthquake Reconstruction (schools, hospital)







# Top Facilities IDIQ Contract Vehicles

## DESIGN:

- USACE EUROPE
  - MILCON/Non-MILCON A-E Services for Western Europe
  - Non-MILCON A-E Services for Western Europe
  - Baltics AE IDIQ
  - MILCON/Non-MILCON A-E Services Italy
  - Environmental Compliance
- USACE Galveston A-E Services for planning, engineering, and construction
- USACE Japan Military A-E Services
- USACE Jacksonville A-E Services
- USACE Kansas City Military and CW A-E Services
- USACE Louisville IIJA A-E Design
- USACE MED CENTCOM A-E Services JV w/M&H
- USACE New England A-E Services
- AFCEC AE Next AE IDIQ Pool 4-Unrestricted

## DESIGN (cont.):

- NAVFAC Atlantic Utilities Eng. and Mgt.
- NAVFAC Atlantic Utilities Professional Services
- NAVFAC Pacific Utilities Eng. and Mgt.
- NAVFAC Pacific Shipyard Infrastructure Optimization Program (SIOP)

## CONSTRUCTION:

- AFCEC Comprehensive Construction and Engineering (C2E)
- NAVFAC Global Contingency Contract
- USACE MED Israel (MATOCs & Standalones) (Prime: CDM Constructors Inc.)
- USACE NAU Poland MATOC

## SERVICES:

- GSA OASIS+ (Environmental, Facility, Mgt. & Advisory, and Tech. & Eng.)
- GSA Multiple Award Schedule (multi)





# listen. think. deliver.



Military Facilities Design



**CDM**  
**Smith**