



PLANATE
MANAGEMENT GROUP
CORNERSTONE FOR SERVICE, INTEGRITY, AND INNOVATION

Planate Management Group



Planate at a glance



Founded in 2007 - SDVOSB

- Headquartered in Alexandria, VA
- Premium Service and Solution
- Engineering Support
- Planning
- A/E Design
- Construction/Renovation



Primary Design Center Located in Orlando

- 16 years of high-quality services worldwide
- Supporting design centers in the Philippines and Kenya
- 24/7 Functional Support Globally

NAICS code

Primary NAICS code:

- **541330** - Engineering Services

Secondary NAICS code:

- **561210** – Facilities Support Services
- **541620** – Environmental Consulting Services
- **541611** – Administrative Management and General Management Consulting Services
- **236220** – Commercial and Institutional Building Construction
- **236210** – Industrial Building Construction
- **562910** – Remediation Services
- **541618** – Other Management Consulting Services
- **237110** – Water and Sewer Line and Related Structures Construction
- **237990** – Other Heavy and Civil Engineering Construction
- **238210** – Electrical Contractors and Other Wiring Installation Contractors
- **237130** – Power and Communication Line and Related Structures Construction
- **541513** – Computer Facilities Management Services
- **541990** – All Other Professional, Scientific, and Technical Services
- **335313** – Switchgear and switchboard apparatus manufacturing
- **561499** – All Other Business Support Services

Planate Global Presence

OFFICE LOCATIONS

PLANATE HEADQUARTERS

1800 Diagonal Road, Suite 600, Alexandria VA, 22314

FLORIDA OFFICE

3361 Rouse Road, Suite 200, Orlando, FL 32817

WASHINGTON

Columbia Center 701 Fifth Ave. Suite 4200 Seattle WA 98104

PHILIPPINES

- Subic Bay
Unit 2-6 Subic Creative Center Building, Manila Ave
cor Dewey Ave, CBD Area Subic Bay Freeport Zone 2222
- Cagayan Valley
11p Invierno Commercial Building,
Dupaya Street, Bagumbayan, Lal Lo, Cagayan 3509

KENYA

Waiyaki Way- Red Hill Link Road Nyari South Estate,
Ngecha Road, House No. 28

UKRAINE

7 Volodymyrska St, Ste 1, Kyiv 01001, Ukraine

TAIWAN

3F., No. 366, Changchun Rd. Taipei City, 104706

GUAM

Core Pacific Commercial Building 545 Chalan
San Antonio Suite 302, Tamuning, Guam 96913

PAPUA NEW GUINEA

Section 14 Lot7 Matirogo Street, 2 Mile, National
Capital District, Moresby South, Papua New Guinea

THAILAND

10th Floor, RSU Tower, 571 Sukumvit Road,
Bangkok 10110 Thailand



LEGEND

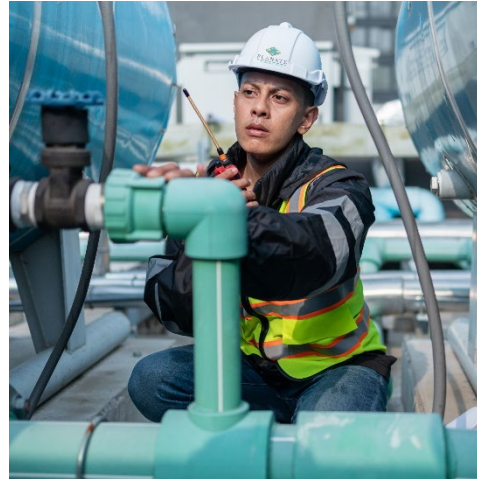


Value Proposition



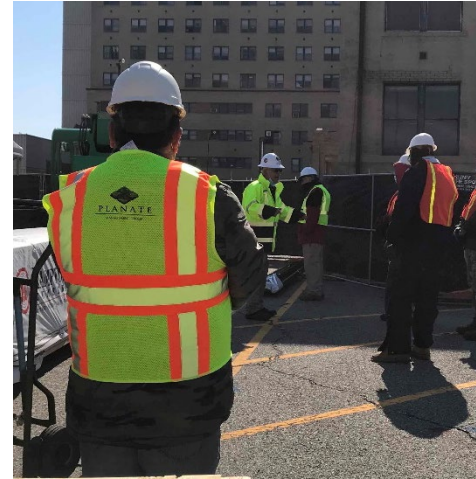
Consistent Delivery

Project success defined by delivery – delivering quality projects meeting client objectives. Our standardized project delivery framework assures our proven project delivery approaches are consistently adhered to.



Agile Response

We offer the flexibility and scalability to staff and manage projects of any size or complexity.



Cost Effective

Highly skilled pool of local multi-disciplinary technical team delivering efficient designs.



Client Focus

Collaborating to understand project (your) objectives; proficient with any government agencies

Our Services

Architecture & Engineering Design

- International Building Code Compliance
- Unified Facility Criteria Compliance and Code Analysis
- Facility Condition Assessment
- Inspection and Testing Services
- Construction Drawings and Specifications
- Construction Project Cost Estimates
- Schematics and Design Development
- Independent Design Reviews
- Mechanical, Electrical, and Plumbing (MEP) Design
- Building Information Modeling (BIM) Systems
- Construction Design Services
- Infrastructure Planning and Layout
- Medical Facilities Design
- Airfield Design
- Design Project Reviews, Design Study, Analysis and Calculation
- Prepare Technical Design Specifications
- Waterfront Surveys and Maritime Design
- Pier side Services design (All Utility Services)
- Classified Design Needs
- Critical Power and Uninterruptible Power Supply

Past Performance

- NAVFAC FE ROICC Thailand A&E IDIQ SATOC (SE Asia)
- NAVFAC FE ROICC Thailand D/B UFC Construction of South Arm/De-arm Pad (Philippines)
- NAVFAC PAC Camp Aguinaldo Design (Philippines)
- NAVFAC PAC DB MACC Cost Estimating and Scheduling Support (Diego Garcia)
- US ARMY LOGCAP Design & Engineering Support (Honduras, Romania, Afghanistan, Puerto Rico, Kwajalein)
- US ARMY LOGCAP Military Working Dog Facilities Design (Micronesia)
- VA Nationwide Medical Facilities Design





Our Services

Engineering Services

- Critical Operational Facilities and Infrastructure Management
- Technical Studies and Assessments (Utilities, MEP, Structural and Fire Protection)
- Site and Facility Condition Assessments
- Construction Management
- Construction Inspections
- Quality Assurance/Quality Control (QA/QC)
- Planning/Estimating/Engineering Technician Support
- Construction Program/Project Management
- Energy and Water Management
- Engineering Division/Staff Augmentation
- Cleared (TS/SCI) Engineering/Construction Staff
- Operations and Maintenance Management
- General Engineering Support (i.e., RFP and 1391 development, scheduling)



Past Performance

- NAVFAC SeaPort Construction/Program Management (Bahrain, Romania, UAE, Spain, Italy)
- NAVFAC Pacific Construction & Quality Assurance Support Services (Philippines)
- AFCAP Andersen AFB Typhoon Mawar FCA/ Advisory & Assistance Support
- US ARMY LOGCAP V Facilities Assessment, Environmental Baseline Survey, Facilities O&M (Philippines); Facilities Technical Inspection (RMI); Professional Services (Jordan, Kuwait)
- NAVFAC Marianas Construction Management Support (Darwin, Australia)
- DOI BIE Construction Project Management (US)
- VA Construction Management (PA, NV, CA, FL, PR, DC)



Our Services

Engineering Services

FACILITY PLANNING & PROGRAMMING

- Financial Improvement Audit Readiness (FIAR)
- Facility Requirements Analysis
- Basic Facility Requirements (BFR) and Facility Planning Documents (FPD)
- Stationing Analysis
- Asset Evaluations (AE) and Facility Condition Assessments
- Real Property Database Management
- Real Property Asset Validation Surveys
- Facility Utilization Surveys
- Space Utilization Surveys and Space Management
- Floor Plans and Computer-Aided Design & Drafting (CADD)
- Site Approval Documents
- DD Form 1391 Programming and Cost Estimates
- DD 1354 Development

MASTER PLANNING

- Mapping & Geographic Information System (GIS)
- Installation Energy and Water Plans (IEWP)
- Unified Facilities Criteria (UFC) Compliant Installation
- Regional & Installation Level Plans and Studies
- Charrettes & Facilitation
- Area Development & Execution Plans (ADP/ADEP)
- Joint Land Use Studies
- Site Planning & Selection
- Nodal Development Plans (NDP)
- Capacity Planning Studies

Past Performance

- NAVFAC MIDLANT Community Planners (US)
- NAVFAC EURAFCENT Planning & Program Support (Bahrain, Djibouti)
- NAVFAC EURAFCENT Planning & Estimating Services (Romania, Djibouti)
- USACE Tulsa District MCAS Iwakuni Master Planning (Japan)
- VA Master Planning Services (NV)
- VA Lease Acquisition Packages
- DHS ICE Facilities Assessment (Honolulu, Hawaii)



Our Services

Technology & Robotics

MAILROOM AUTOMATION & OPERATIONS

- CBRNE Mail Screening
Integration of Advanced Detection Systems to protect personnel and infrastructure from mail-borne threats
- End-to-End Digital Mailrooms
Turnkey design and operation of mailrooms, covering receipt, logging, distribution, and digital transformation
- Automation Technology
Implementation of barcode scanning, AI-assisted sorting, OCR, and autonomous robotic handling
- Secure Processing
Proven capability in handling sensitive and classified mail within enterprise-level and regulated environments

ROBOTICS & AUTONOMOUS SYSTEMS

- Aerial (UAV) Operations:
Deployment of drones for surveillance, mapping, and light cargo delivery, supported by programming, piloting, and maintenance services
- Subsurface (ROV) Systems:
Use of underwater robotics for inspection, maintenance, and exploration in environments unsafe for divers
- Integrated Mapping & Surveillance
Real-time data collection for terrain analysis, object detection, and threat monitoring above and below the surface
- Mission-Ready Support
Full-spectrum lifecycle services including commissioning, configuration, reporting, and ongoing system maintenance



Past Performance

- Amazon CBRNE: Phase 1 Negative Pressure Mailroom Assessment and Recommendation
- Haiti Drone Survey
- BIE Drones Assessment

Planate Featured Projects



Eurafcnt

- Planning & Estimating Support
- Planning & Programming Support
- Facilities Engineering Support Services
- Installation Energy/Engineering Management Support Services
- Construction Management and Engineering Technician Support Services

1. Construction & Facilities Services:

Planate manages complex construction and facilities contracts in challenging environments, handling everything from planning and mobilization to internal contract administration and project controls. Their engineers conduct feasibility studies, develop requirements packages, review designs, and ensure compliance with customer needs and budgets.

2. Program Management Services:

Planate oversees project budgets and timelines, tracks cost/schedule metrics, and supports dispute resolution and contract terminations. They coordinate with NAVFAC, the U.S. Navy, DoD, and other agencies to manage program requirements and approvals.

3. Administrative Support:

Planate provides clerical and administrative support to NAVFAC Djibouti, ensuring proper documentation, compliance with policies, and efficient management of administrative operations.

4. Technical Analysis Support:

They assist NAVFAC in defining, estimating, and evaluating facility requirements for repairs, maintenance, and minor construction. This includes managing IDIQ contracts, updating performance work statements, and supporting project scope and cost development.



The end result: Camp Lemonnier's energy use was reduced by 15%, lowering energy bills by \$3.5M annually.

Planate's project was awarded the GreenGov Award by the White House, one of only four projects government-wide to receive such honors.

Planate Featured Projects



Thailand

NAVFAC FE ROICC Thailand A-E Design Single Award Contract - Bangkok, Thailand

Planate will provide International Building Code (IBC), Unified Facilities Criteria (UFC) 1-201-01 Non-Permanent DoD Facilities in Support of Military Operations, and Host Nation Construction Codes compliant design and engineering services for the preparation of preliminary and final construction plans (design) and specifications, cost estimates, project engineering documentation, including DD1391s, and parametric cost estimate documentation, technical reports including engineering and investigations and concept studies, construction cost estimates, operations and maintenance manuals, design reviews, construction consultation, geotechnical investigations, utility site surveys, environmental compliance, Post-Construction Award Services (PCAS), and topographic surveys.

- TO1 – Assessment & Design for Wastewater Treatment System & Effluent Decontamination System
- TO2 – Hangar Door and Storm Water Drainage Design
- TO3 – Construction Management Contract Services
- TO4 – Repair of Above Ground Fuel Storage
- TO5 – Construct Explosive Storage Facilities



Guam

Air Force Contract Augmentation Program V (AFCAP V) - Typhoon Mawar Recovery, Guam

Planate provided facility assessments, drafted scopes of work (SOW) and completed construction cost estimates for 103 buildings. We drafted drawings to include with the requests for proposal (RFP) where required. Planate is completing the following functions:

- Receive all Requests for Information (RFI) from construction contractors. Draft and send responses that do not result in a change in cost or schedule. Draft recommendations to the government for all others.
- Maintain Integrated Master Schedule (IMS). Solicit and receive weekly updates from construction contractors and update IMS weekly.
- Review and recommend approval of Material Submittals. Compare each submittal to the required specifications then recommend approval.
- As project A&E firm, drafted drawings and specifications.
- Draft weekly update brief for the government. Coordinate inputs from the construction contractors and update weekly government brief.

Planate Featured Projects



Ethiopia

DTRA Facilities & Laboratory Construction Observation Network (FALCON) - Quality Assurance Support

Planate provided facility assessments, drafted scopes of work (SOW) and completed construction cost estimates for 103 buildings. We drafted drawings to include with the requests for proposal (RFP) where required. Planate is completing the following functions:

- Receive all Requests for Information (RFI) from construction contractors. Draft and send responses that do not result in a change in cost or schedule. Draft recommendations to the government for all others.
- Maintain Integrated Master Schedule (IMS). Solicit and receive weekly updates from construction contractors and update IMS weekly.
- Review and recommend approval of Material Submittals. Compare each submittal to the required specifications then recommend approval or re-submittal from the construction contractor.
- As project A&E firm, drafted drawings and specifications.
- Draft weekly update brief for the government. Coordinate inputs from the construction contractors and update weekly government brief.



Nebraska

Offutt Air Force Base, Nebraska – Flood Recovery Effort

Following the catastrophic 2018 flooding that damaged over 130 structures at Offutt AFB, Planate delivered critical engineering, planning, and construction management support to accelerate recovery and mission continuity.

Key Contributions:

- Rapid Facility Assessments: Evaluated 80 flood-damaged structures, providing repair estimates and recovery priority recommendations.
- Strategic Planning & Design: Developed concept designs aligned with the Installation Development Plan, including consolidation, relocation, demolition, and new construction strategies.
- Funding Justification: Produced 8 full MILCON DD1391 packages validating \$357M for replacements and 18 front-page DD1391s for \$48M in FSRM repairs.
- Specialized Engineering: Designed foundations and HEMP-shielded systems for 3 FAB-T Antenna Support Towers and 3 HEMP Shielded Enclosures, incorporating PL-1 security features.
- Construction Management: Oversaw 6 major construction packages, ensuring quality control, safety compliance, subcontractor coordination, and timely issue resolution.

Planate Featured Projects



Northern California, Central California, Western Nevada, Hawaii, the Philippines, and Guam

VISN 21 FSS BPA For Architectural And Engineering (A/E) Services / Project Management For Lease Requirements Packages

Planate Management Group is proud to be a prime contractor to provide professional services to assist the Veterans Integrated Service Network (VISN) 21, including the seven healthcare systems within the VISN, to plan and develop lease acquisition packages on behalf of the Department of Veterans Affairs (VA). VISN 21 encompasses much of Northern California, Central California, Western Nevada, Hawaii, the Philippines, and Guam.



Alaska

Planate to Provide Safety And Security Upgrades - Anchorage, Alaska

Planate will provide professional services including site visits, calculations, preparation of contract drawings and specifications, cost estimates, construction bid documents, solicitation phase support, and construction period services to meet safety and security requirements.

Planate's design work will include a heated sidewalk snowmelt system and physical security measures such as card reader access gates with automatic/remote operation, intercom systems, and security cameras. The team will then deliver construction services for the submitted and approved designs.

Planate Featured Projects



Alaska

Di - Logistics Civil Augmentation Program (LOGCAP) - US Fort Wainwright, Fairbanks, Alaska

Conducted structural engineer QA/QC reviewing the design and installation of various CRTF tent structure facilities for the US Army Alaska (USARAK). Planate reviewed and approved loading criteria, design calculations and their associated structural drawings, proposed foundation design methodology and anchorage requirement for the fabric tent structures installed into existing pavement parking lot.



Alaska

VISN 20 AE IDIQ & Related Professional Services SATOC - Washington, Portland, Oregon, & Alaska

Planate provided a variety A/E and related professional services to include a combination of programming, planning, studies, consultations, independent design reviews, verification of requirements, schematic and design development, conceptual designs, independent design reviews, sustainable design (LEED and/or Green Globes), preparation of construction drawings and specifications, construction phase services, construction estimates, inspection and testing services, preparation of operation and maintenance manuals, schedule and delay analysis, surveying and mapping, soil engineering, value engineering, commissioning, construction management services, activation services.

Planate Featured Projects



Hawaii

U.S. Immigration and Customs Enforcement Facility Assessment - DHS ICE Facility Assessment, Honolulu, HI

Planate Management Group, LLC (Planate) performed a facility and space utilization assessment at the U.S Department of Homeland Security Campus located at 591-595 Ala Moana Boulevard, Honolulu, HI 96813. Planate Team inspected and assessed the current condition of the existing building as to determine the overall space capacity required to accommodate U.S. Immigration & Customs Enforcement (ICE) program of requirements for personnel workstations and supervisor offices at the same time upgrading building infrastructure to current building code and technology.

There were three (3) historical buildings that were inspected, the Administration building consisting of 19,014 square feet has a second level over the center of the building and one level wings on each side in an 'H' shape, the Garage and Waiting Pavilion consisting of 3,968 square feet and the Lanai or Investigation Annex consisting of 4,442 square feet



Accessing Planate

Multiple Award Prime Contract Vehicles

- GSA OASIS+ SB and SDVOSB
- GSA Professional Services Schedule
- GSA Polaris SDVOSB
- Seaport-NxG Professional Engineering Support IDIQ
- NAVFAC ROICC Thailand AE IDIQ SATOC
- NAVFAC EXWC Critical Power Support Services
- Diplomatic Platform Support Services SB
- DOS OBO Program Management IDIQ
- GSA Program Management Support Ali Fliah Base, Iraq
- USACE Louisville Construction Management IDIQ
- USACE Construction Management IDIQ Honolulu District
- VA CFM National Region AE IDIQ
- VISN 19 Construction Management Services, Grand Junction, CO
- VISN 8 AE IDIQ North Region
- VISN 8 Construction Management BPA
- VISN 21 AE Design IDIQ

Subcontract Vehicles

- NAVFAC FE AEC IDIQ DB DBB MACC for Singapore
- NAVFAC PAC Construction INDOPAC MACC
- NAVFAC FE Multi-discipline AE IDIQ
- Air Force Contract Augmentation Program (AFCAP) MATOC
- DTRA RDEC RECO Support Contract
- DTRA Facilities & Laboratory Construction Observation Network (FALCON)
- DOI Business Support Services IDIQ
- DOI Construction Support Services
- OASIS Large Business
- US ARMY LOGCAP V
- USACE AE Civil Honolulu Hawaii
- USACE MED Construction Phase Services
- USACE MED AE IDIQ MATOC
- VISN 4-AE Services Multiple Award IDIQ



Client Community

Working Together

Planate builds strong partnerships and key relationships. We value our strong ties to government agencies, corporate partnerships, and the local business community.

Partner / Teammates



Federal Clients



Offices

PLANATE HEADQUARTERS

1800 Diagonal Road,
Suite 600 Alexandria, VA
22314

THAILAND

10th Floor, RSU Tower , 571
Sukumvit Road, Bangkok
10110 Thailand

FLORIDA OFFICE

3361 Rouse Road. Suite 200
Orlando, FL 32817

TAIWAN

3F No. 366 Changchun Rd.,
Taipei City

PHILIPPINES

SUBIC BAY – Unit 2-6 Subic
Creative Building, Manila
Ave., CBD Area Subic
Freeport Zone 2222

CAGAYAN VALLEY –
P. Dupay Street,
Bagumbayan, Lal – lo,
Cagayan

UKRAINE

7 Volodymyrska St., Ste 1
Kyiv 01001, Ukraine

KENYA

Waiyaki Way- Red Hill Link Road
Ngecha Road, Nyari South Estate
House No. 28 P. O. Box Number:
1735, Sarit Centre Kenya

PAPUA NEW GUINEA

Section 14 Lot 7, Matirogo
Street, 2 Mile, National
Capital District, Moresby
South, Papua New Guinea

GUAM

Core Pacific Commerical Bldg
545 Chalan San Antonio, #302
Tamuning, Guam 96913

Contacts

William Warnock

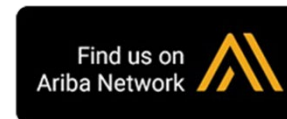
Chief Growth Officer
(US) +1-917-922-8988
william.warnock@planate.com

Reese Mangaran

Head of BD & Capture
(US) +1-703-887-9327
reese.mangaran@planate.com

1-703-232-1491
US Virginia

1-800-543-1989
US Toll Free



UEI:ZL3LH37LF183 | CAGE Code: 4XZF6 | NAICS: 541330