



SAME NoVA Post 10th Annual Business-to-Business (B2B) Engagement

National Museum of the U.S. Army at Fort Belvoir
December 11, 2025





SPECIAL THANKS TO THE SAME NOVA POST'S 10TH ANNUAL BUSINESS-TO-BUSINESS (B2B) ENGAGEMENT SPONSORS





HZ **HUITT ZOLLARS**

CELEBRATING OUR **50TH** ANNIVERSARY



A little about us

Huitt-Zollars *Fast Facts*

Huitt-Zollars is an award-winning, full-service design practice providing comprehensive architecture, engineering, interior design, urban design, and planning services. Our legacy, footprint, and experience know no bounds. From China to America, Huitt-Zollars make places that make a difference around the world.



560+
Skilled
Personnel

23
National
Offices

We offer large firm resources and small firm attention-to-detail for our clients - many of whom have secured our services through long-term, repeat contracts. In addition to full service traditional design services, we offer design/build and other alternative delivery methodologies. Huitt-Zollars uses an ISO-9001:2015 Compliant Quality Management System which endures our deliverables are of the highest quality possible.



Some of our Federal Clients



Our Mentor-Protégé Joint Venture



PROTÉGÉ OVERVIEW

CB Design Group is a full-service architecture firm specializing in the design of institutional, government and other public projects with construction values up to \$100M. The firm was established with the mission of providing excellent service to our country, our communities, and our clients. In December 2015, CB Design Group was officially certified as a Service-Disabled Veteran Owned Small Business by the VA. CB Design Group is also proud to be a graduate of the Veteran's Institute for Procurement 2016 Certification Program.

CB Design Group has served as Prime and / or Architect on over 50 Federal Healthcare projects since inception in 2015.



SAME Engagement

7 yrs w/ SAME Summer STEM Camps:
2023 USAFA Camp



3 yrs w/ DC/NOVA Leader Development
Program
2025 LDP Cohort





**ECO WASTE
SOLUTIONS**

DEPLOYABLE & SAFE ON-SITE WASTE MANAGEMENT

Date: December 11, 2025



**ECO WASTE
SOLUTIONS**

Eco Waste Solutions in Action, Around the World

EWS Customers include:

Global Defense Agencies:

US Army, US Air Force, NATO Armed Forces,
United Arab Emirates Armed Forces,
Swedish Armed Forces, Canadian DND

Top Global Mining Companies:

Barrick, Vale, De Beers, Agnico Eagle, Goldcorp,
Kinross, B2Gold

Engineering and Construction Companies:

Fluor, AMEC, Hatch, AtkinsRéalis, Aecom, RESPEC

Governments:

City of Skagway Alaska, City of Mississauga,
Belize City, Cree Nation of Wemindji,
Public Works & Government Services Canada



ECO Mobile Meets NATO Expeditionary Forces Requirements

- EWS equipment supports troops that can deploy anywhere in the world - in all climates: arctic, desert, tropics
- No waste can be left behind after the mission. Waste is reduced to sterile, inert residual (10% of original volume) that will not contaminate water or land
- EWS ECO Mobile is the world's first mobile incinerator to meet the EU Directive (strictest global air emissions standards of the NATO member countries)



URGENT MILITARY REQUIREMENT: SAFE, ON-SITE WASTE DESTRUCTION



3.5 million service members have been exposed to burn pits & toxic exposure while deployed in Southwest Asia since 1990



Burn pits and “last minute” methods have proven to be catastrophic for troop health and wellness as well as an environmental disaster



Leveraging outside contractors/host nationals is a threat to OPSEC and increases US exposure to environmental liabilities



ESWD is the only system in the DoD that eliminates burn pits by safely destroying waste in the field



ESWDS is operational within hours of arriving. Ideal for contested logistics in friendly/hostile environments around the world.



ESWDS: THE SOLUTION

EXPEDITIONARY SOLID WASTE DISPOSAL SYSTEM (ESWDS)



NATIONAL STOCK NUMBERS (NSN):
4540-01-700-3089 (OD Green) 4540-01-700-3035 (Desert Tan)

Quickly and easily set up and operated in hours
by two soldiers or non-specified personnel,
utilizing a 10k forklift.



**95%
WASTE
REDUCTION
TO
INERT
ASH**





**ECO-WASTE
SOLUTIONS**

DESIGNED AND BUILT FOR THE US MILITARY, BUT SOLVES MANY OTHER WASTE ISSUES:

- **ISLANDS/REMOTE LOCATIONS**
- **BORDER/PORT SECURITY**
- **DISASTER/HUMANITARIAN RELIEF**
- **MEDICAL WASTE DESTRUCTION**
- **CONTRABAND/NARCOTICS DESTRUCTION**
- **PETROLEUM, OILS, AND LUBRICANT (POL) DESTRUCTION**
- **BIOLOGICAL EPIDEMICS (BIRD FLU, H1N1, MAD COW)**





Contact:

Dr. John J. Jackson

Military Support

540-621-0327

jjackson@ecosolutions.com



Michael Baker International Overview

SAME NoVA Post Business to Business

December 11, 2025



Full-Service Firm

We are a leading provider of engineering, consulting and technology services spanning three distinct verticals:

- Infrastructure
- Integrated Design and Advisory (IDA)
- GovTech



At-A-Glance



5,100+

Employees



90+

Offices



Full-Service
Engineering,
Consulting
and Advisory
Services Firm



85

Years of
Project Innovation



#27

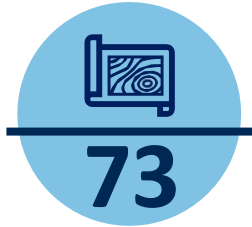
ENR Top 500
Design Firms



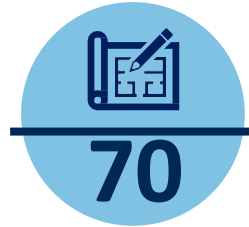
70+

Countries in Which
We've Worked

Our Team



Certified Planners



Registered Architects



LEED Professionals



Professional Engineers



Project Management
Professionals



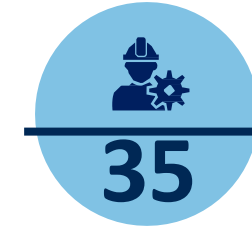
Professional Landscape
Architects



Professional Geologists



Employees with
Security Clearances
28 TS | 33 TS/SCI



Professional Land
Surveyors

Trusted Partner to All Branches of the Military

- Airfield & Aviation Design
- Anti-Terrorism/Force Protection
- Architecture
- Building Systems Engineering
- Building Information Modeling
- Bridge Inspection & Design
- Civil Engineering
- Commissioning
- Construction Management
- Cost Engineering
- Cyber Security
- Design-Build
- Environmental Consulting & Sustainability
- Geotechnical Engineering
- Hydraulics & Hydrology
- Infrastructure Planning & Design
- LiDAR / UAS /Surveying/Mapping
- Master Planning
- Military Installation Planning
- Mitigation, Response, Recovery & Resilience
- NEPA
- Program Management
- Renewable Energy
- Site Utility Assessment
- Telecom & Security Systems
- Value Engineering
- Water/ Wastewater/ Stormwater
- Zoology

Federal Planning – Full Spectrum of Capabilities



“Outside the Fenceline” Mitigation Strategies

- AICUZ (MCAS Cherry Point, various)
- Next Steps to Land Use Compatibility Study (Monmouth County, NJ / NWS Earle)
- ICEMAP (various)
- Growth Coordination Plan (Joint Base Lewis-McChord)



Integrated Installation Planning

- Area Development Plans (NSA Hampton Roads, MCAS Cherry Point)
- Installation Development Plans (NAS Jacksonville, NS Mayport)
- Requirements Validation and DD1391 Packages (NAVAIR PMA-271, Multi-Domain Task Force)
- Military Installation Resilience Plans (NSA Hampton Roads, Fort Carson)



Facility Utilization Studies

- Facility Space Planning and Optimization (Kadena AB, Davis-Monthan AFB)
- Cost Estimation and Master Planning Support (South Korea)
- Del Din Facilities Optimization Study (USAG Italy)
- Fleet Infrastructure Optimization and Modernization Plan (COMFRC, FRC Southeast)
- Utilities Condition Assessments and GOS Mapping (CNIC)



Requirements

- E-130J Point Mugu Laydown Study
- Portsmouth Naval Shipyard Infrastructure Optimization Advanced planning Study
- ALCOM Installation development Plan Addendums and PCRs (JBER, Eielson AFB)
- MK Air Base Area Development Plan (Romania)
- Multi-Domain Task Force Requirements Analyses and Stationing Plans

87

ADPs

100+

PDA/BPA/
PCRs/1391s

585

BFRs

25

CISs

8,000+

AEs

7

IDPs

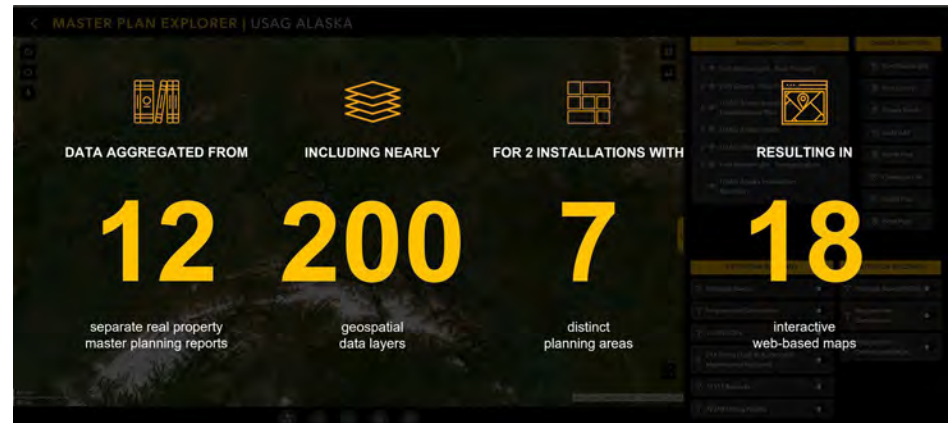
30+

Vision Plans

Innovation: Digital Master Plans

USAG Alaska Prototype

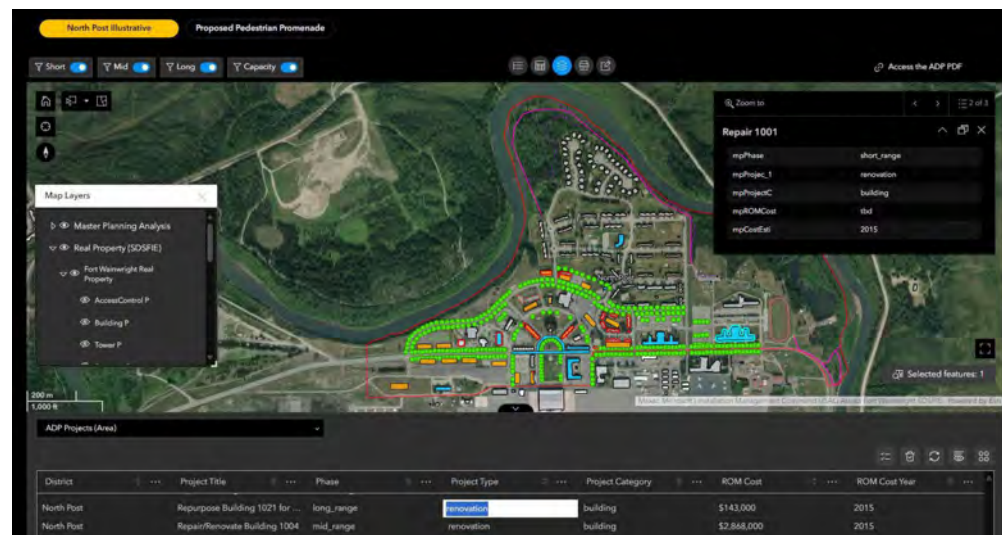
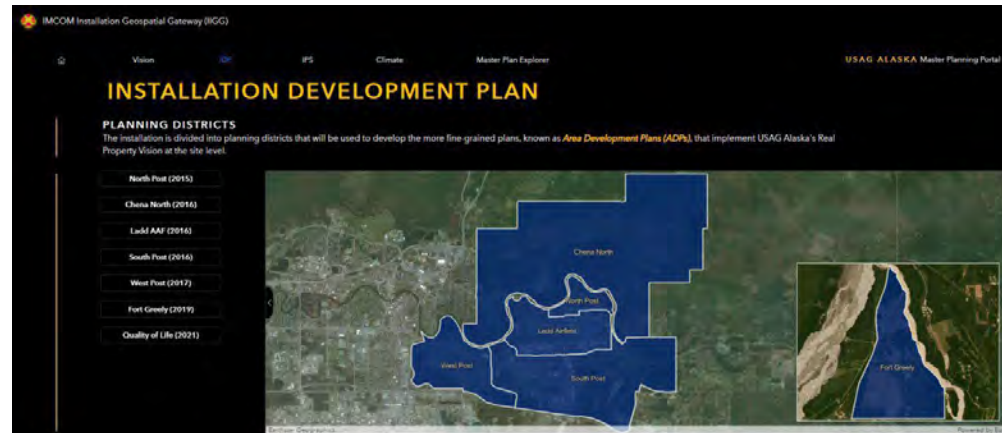
- Built on the Installation Geospatial Gateway (IIGG), a CAC-enabled geospatial database maintained by DCS, G9 and IMCOM to properly secure data
- Decision support tool - Translates master plan report data and outcomes into a dynamic, easy-to-use format for installation end users
- Allows USAG Alaska planners and GIS technicians to dynamically update the master plan without any contract support
- Built using Esri Experience Builder:
 - Commercial off-the-shelf app, readily available to the Army at no extra cost
 - No issues with maintaining the software or purchasing expensive licenses
 - Easy to use – Specialized user knowledge not required



Innovation: Digital Master Plans, Continued

Additional DMPs

- HQ IMCOM contracted Michael Baker to expand the program and develop an additional 15 master planning portals
- These digital master plans modernize master planning by transforming planning products from static reports to a dynamic platform
- Michael Baker developed a universal standard for HQ IMCOM's master planning analysis of GIS data
- In collaboration with installation master planning and GIS personnel, Michael Baker custom configures features to support existing installation planning workflows



Energetic Projects

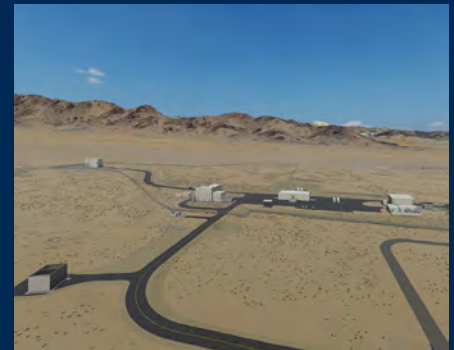
P-1495 10th Marines High
Mobility Artillery Rocket
System (HIMARS) Complex
| *MCB Camp Lejeune,
Jacksonville, North Carolina*



Air Defense Operation Center
(ADOC) Tactical Facilities
Design, Integrated Air Missile
Defense (IAMD) Program |
Qatar



P-1917 Cast Propellant Mix
Facility; P-1920 Warhead
Casing Operations Facility;
P-1921 Motor Assembly
Compound | *Naval Air
Weapons Station China
Lake, California*



Laboratory Projects

P-250 Biomolecular
Science & Synthetic
Biology Laboratory |
*Naval Research Laboratory,
Washington, D.C.*



Building 1A Engineering,
Analysis, and Solutions
(EASL) Laboratory
Expansion | *Tobyhanna
Army Depot, Pennsylvania*



P-1904 Michelson
Laboratory Complex
Consolidation | *Naval Air
Weapons Station, China
Lake, California*



Aviation Projects

P-691: Aircraft Development
and Maintenance Facilities
Phase 1 | *Naval Air Station
Patuxent River, Maryland*



C-5/C-17 Fuel Cell
Maintenance Hangar |
*Dover Air Force Base,
Delaware*



Under Design Development

H-115 AE Hangar Life Extension
Naval Air Station Patuxent River, Maryland

P-559: Aircraft Prototyping Facility (Phase III)
Naval Air Station Patuxent River, Maryland

F-35 Program Support

P-197 & P-199 F-35B Aircraft
Maintenance Hangars | *Marine
Corps Air Station Cherry Point,
Havelock, North Carolina*



F-35A Beddown Program
Management Office |
Misawa Air Base, Japan



P-683 Engine Repair Facility |
*Naval Air Station, Jacksonville,
Florida*



F-35A 40/42 Additions and
Aircraft Maintenance Unit
(AMU) | *Hill Air Force Base, Utah*



U.S. Naval Academy Bancroft Hall Recapitalization Program

Annapolis, Maryland

Dormitory for 4,600 Midshipmen and 1,000 Support Services Staff

- National Historic Landmark
- 9 wings built between 1908 and 1961
- 1,900,000 SF, 43 acres, 1,700 rooms, 5 stories, 1,600 miles of wiring, 4.8 miles of corridors
- 25% larger than U.S. Capitol Building
- Has its own zip code and post office
- Area equal to 32 football fields



Building 8 Renovation Marine Barracks

Washington, D.C.



WMATA Bladensburg Maintenance Facility

Washington, D.C.



Fairfax County DPWES Consolidation

Fairfax County, Virginia



Promoting the Small Business Community

Michael Baker is committed to driving meaningful growth of our small and disadvantaged business partners. We currently mentor three protégé partners under the SBA All Small Mentor-Protégé Program.



Small Business, SDVOSB JV



Small Business, 8(a), WOSB JV



Small Business, SDVOSB JV

Contact Information



John Alberghini, PE

National Market Lead- Navy

john.alberghini@mbakerintl.com

(757) 631-5294



**Gerald Morris, PMP, LEED AP
BD+C, CDT, CCM, CQM-C, F.SAME**

*National Market Lead - Federal
Civilian Programs*

gerald.morris@mbakerintl.com

251-341-3126



Beth Drylie, PE

Director of Business Development, Mid-Atlantic

bdrylie@mbakerintl.com

(757) 631-5445



John Hurley, PE

National Market Lead- Navy

john.hurley@mbakerintl.com

(703) 317-6228



Josh Rose, PE

National Market Lead - Air Force

josh.rose@mbakerintl.com

(858) 614-5007



Michael Baker
INTERNATIONAL



**We Make Everything
Around Us Better.**

www.primeeng.com

SAME Northern Virginia Post

10th Annual Business-to-Business (B2B) Engagement

December 11, 2025

Ed Chamberlayne, PE, PhD, F.SAME

Widespread Knowledge. Local Influence.

Community Starts Locally

Local presence, regional expertise, and national support.



22

Offices



9

States

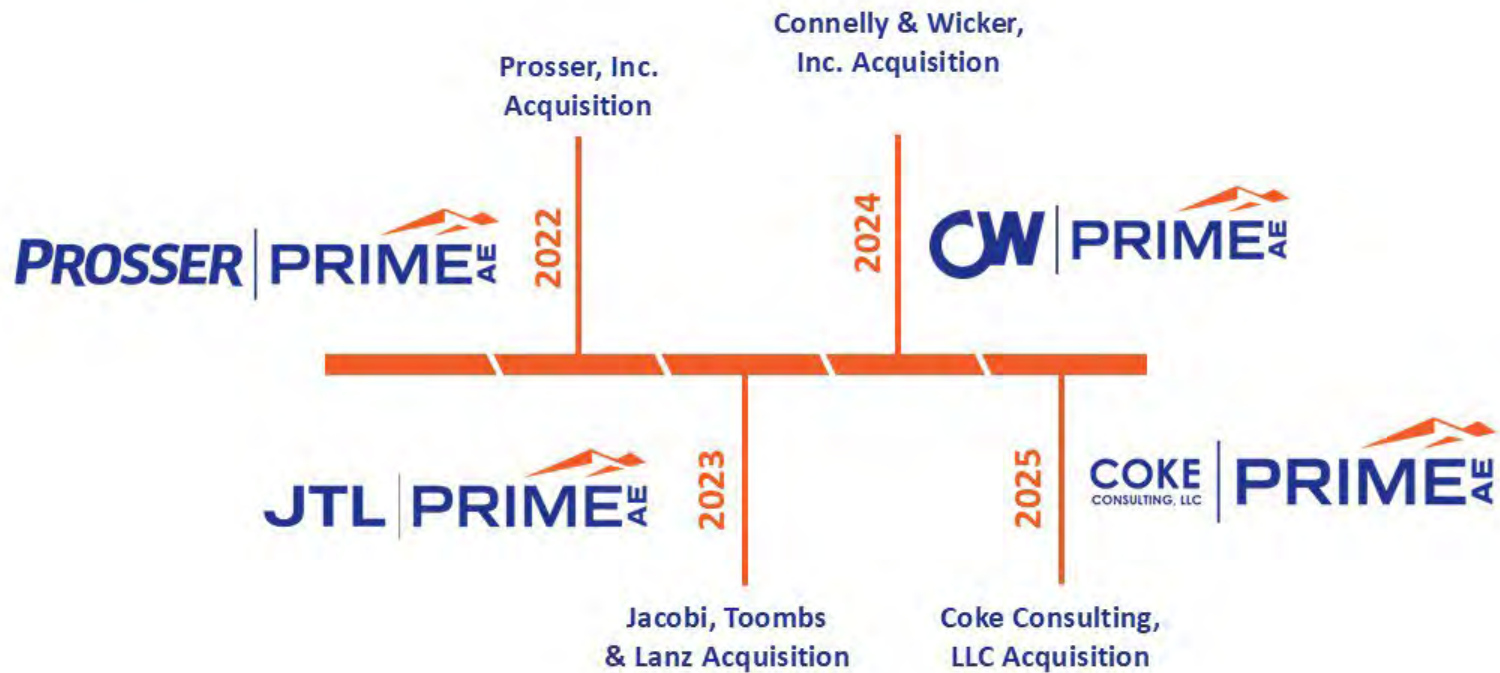


520+

Strong



Mergers and Acquisitions



Multi Disciplinary Firm. Balanced Portfolio.

A photograph of a modern building with a large, curved glass facade and a prominent circular entrance, set against a clear sky.


Architecture

A photograph of a large-scale construction project, showing a tall structure under development with scaffolding and cranes.

Engineering

A photograph of a tropical landscape featuring palm trees and a paved road, with a building visible in the background.

**Master
Planning &
Geospatial**

A solid green rectangular block.

Federal

A photograph of a highway interchange with multiple lanes and overpasses, viewed from an elevated perspective.

Transportation

A photograph of a body of water, possibly a lake or reservoir, with a forested shoreline and a small building in the distance.

Water

A photograph of a modern building with a glass facade, surrounded by lush greenery and trees.

**Landscape
Architecture**

A photograph of a construction site with workers on a large structure, possibly a bridge or a large building, under construction.

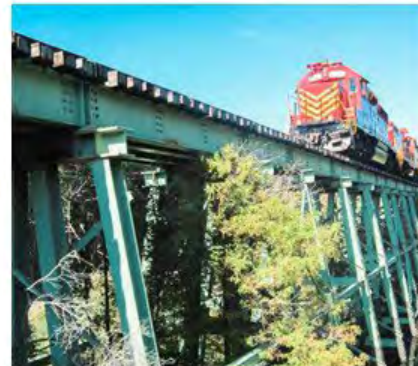
**Construction
Management &
Inspection (CMCI)**

Multi Disciplinary Firm. Balanced Portfolio.

Sector
Federal



SERVICES
Architecture
Bridge Design
Bridge Inspection, Load, & Rating Analysis
Building Envelope
Civil Engineering
Environmental Permits
Geospatial and Mapping
Interior Design
Landscape Architecture
Master Planning
MEP Engineering
Structural Engineering



Federal Clients

U.S. Army

- USACE Norfolk District
- USACE Baltimore District
- USACE Mobile District
- U.S. Army Engineering Center Huntsville
- USACE Vicksburg District
- **USACE Charleston District**
- USACE Fort Worth District
- USACE Tulsa District



U.S. Air Force

- AFCEC
- Air Mobility Command
- Air Force Materiel Command
- Air Force Reserve Command
- Eglin AFB
- Robins AFB
- Arnold Engineering Development Complex
- Scott AFB
- Malmstrom AFB



Federal Bureau of Prisons

- Northeast Region
- Mid-Atlantic Region



Dept of Homeland Security

- Immigration & Customs Enforcement
- Customs & Border Protection
- FEMA



U.S. Navy

- NAVFAC Southeast
- NAVFAC Mid-Atlantic
- **NAVFAC Washington**
- MARFORRES



Veterans Affairs

- National Cemetery Administration
- Veterans Health Administration



NASA

- Glenn Space Center
- Stennis Space Center



Representative Projects

Having successfully delivered hundreds of projects to federal agencies, our team is passionate about serving our nation to improve the operational environment and quality of life for those that advance the strategic interests of the United States at home and abroad.



**NAVFAC SE – P-200 Nuclear Power Training Unit
Simulator Facility**
CHARLESTON, SC | Constr. Cost \$311M



USACE Mobile – F35 Squad Ops Bldg
Eglin AFB, FL | Constr. Cost \$25M+



USACE Norfolk – JBLE Dormitory
Joint Base Langley - Eustis, VA
Constr. Cost \$85M



**NAVFAC SE – Installation Development Plan
for CNRSE**
NAS Joint Reserve Base New Orleans, LA

Representative Projects - Land



The Grove and EverRange

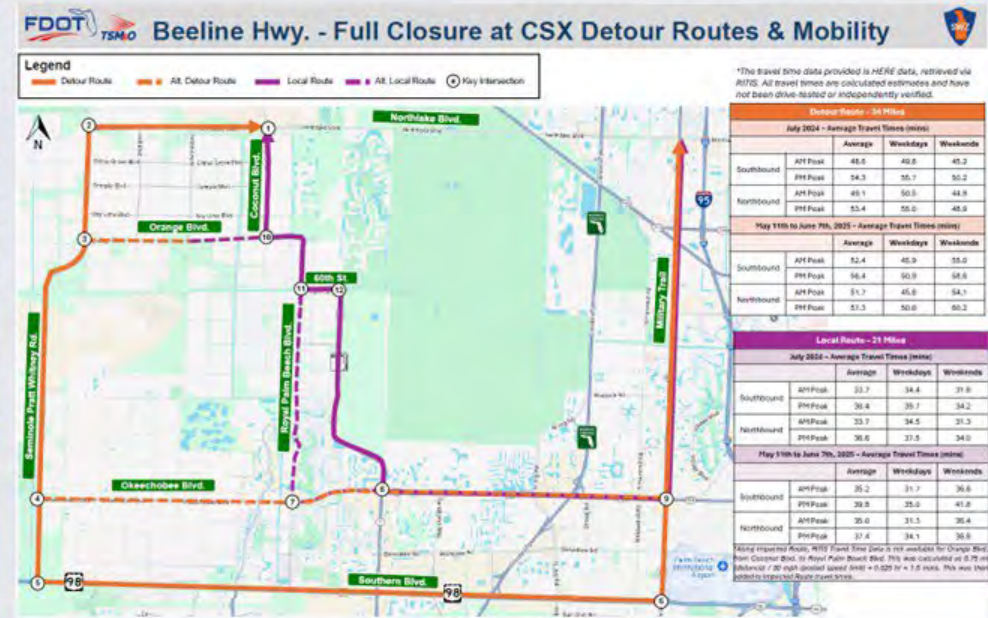
Designed by PRIME AE landscape architects, planners, and civil engineers and visualized by our 3D specialists, The Grove will deliver a welcome center, lakeside pavilion, resort-style pool and splash pad, eight pickleball courts, playground area, dog park, event lawn, and fishing overlook.



Jax Surf Park

PRIME AE is part of the founding group in developing Jacksonville's first surf park, where we are providing civil engineering, planning, and landscape architecture services.

Representative Projects – Transportation



Beeline Highway: Smart Work Zone

The Lake Worth Smart Work Zone Team expertly managed a major weeklong road closure, using real-time monitoring and data-driven planning to keep traffic flowing smoothly. Services included traffic signal design and development of performance measures dashboards.

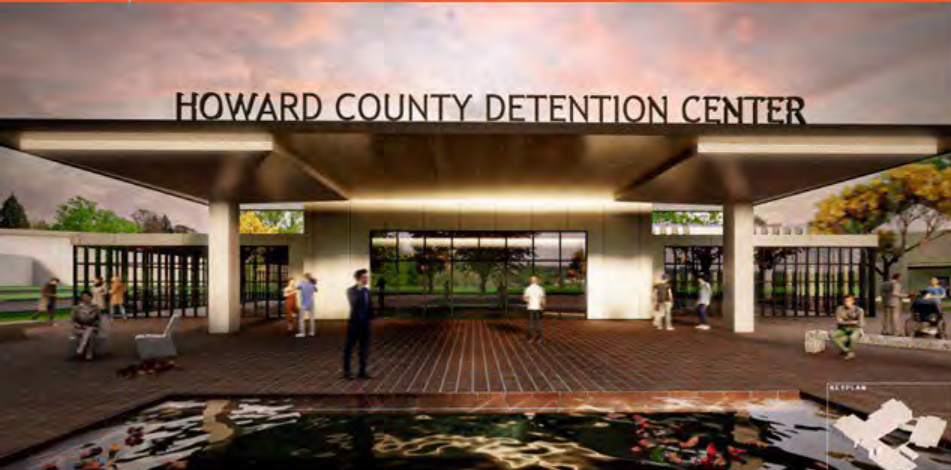
Representative Projects & Awards – Transportation



Cleveland Park Streetscape and Drainage Improvements

In Metro Washington, DC, our Cleveland Park Streetscape & Drainage Improvement Project earned a 2025 ACEC National Recognition Award for transforming a flood-prone corridor along Connecticut Avenue NW with advanced stormwater management, multimodal upgrades, and smart cost-saving solutions.

Representative Projects – Justice



Howard Co. Detention Center Plan

Master

PRIME AE is developing a comprehensive, 600+ page master planning document to guide the replacement of the Howard County Detention Center in Maryland. The plan integrates detailed written and graphic components, addressing facility needs, operations, and future growth. Our team's work includes in-depth analysis, facility programming, and long-term planning to support modern, efficient, and secure corrections operations.

Representative Projects – Hospitality

Le Meridien

PRIME AE renovated the public spaces of an existing hotel in Arlington, Va. The project included a conversion of the restaurant into a new ballroom and required the relocation of the restaurant within the lobby space of the hotel. Project included new lighting, furniture and finishes.



Mentor Protégé JVs



Perigee-PRIME AE SB JV23
WOSB & SDB



Hurst-Rosche PRIME AE HubZone JV
HUBZone & SDB



BKM PRIME AE SB JV
SB





**We Make Everything
Around Us Better.**

www.primeeng.com



Ed Chamberlayne, PE, PhD, F.SAME

ed.chamberlayne@primeeng.com

(410) 862-0911

<https://www.linkedin.com/in/edwardchamberlayne/>



Stanley Consultants, Inc. Overview

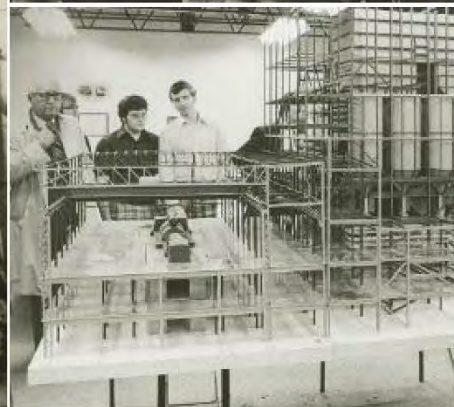
SAME NoVA Post Business-to-Business Engagement

December 11, 2025

Improving lives since 1913

CENTRAL STATES
ENGINEERING CO.

YOUNG & STANLEY, INC.
ENGINEERS



© Stanley Consultants, Inc. Not for further distribution, display, or reproduction

Stanley at a Glance

Full-service multi-disciplinary design, engineering and consulting solutions for strategic clients across energy, federal, transportation and water markets.

- 110+ year history
- 100% employee-owned
- Industry-leading innovator
- ENR Top 500 Design Firm (#120)
- 21 offices worldwide
- More than 900 employees



Stanley Consultants

© Stanley Consultants, Inc. Not for further distribution, display, or reproduction

Company History

One of the oldest and largest employee-owned companies in the United States

Founded in 1913 in Muscatine, Iowa, Stanley Consultants has been helping clients solve essential and complex energy and infrastructure challenges for over 110 years: successfully completing more than 50,000 engagements in 120+ countries and in all 50 U.S. states and U.S. territories.



Company Values

Ethical World Citizen. Independent Advisor.

Our deepest held beliefs have guided our thinking and our actions for over 110 years.



Ethical World Citizen

We act with integrity, openness and fairness across all levels of our organization, working in partnership with our clients and communities to create a positive, lasting impact.



A Duty to Act

Protecting the health, safety and wellbeing of everyone involved in, or affected by, our operations is central to how we work and behave around the world.



Pursuing Excellence

We pursue excellence in all that we do, harnessing time, talent and resources to drive smart solutions, create value and deliver exceptional service.



Relationships Matter

Building long-term, trusted relationships with our clients, partners, communities and shareholders is central to how we create mutual success.



Doing the Right Thing

We are a diverse, creative and inclusive team, with full authority and responsibility for doing the right thing in the right way, every time.



Controlling Our Destiny

Independence and professional objectivity give us the freedom to control our destiny, protect our culture and better align client satisfaction, company performance and personal reward.

Company Offices

21 Offices Worldwide

Serving strategic energy and infrastructure clients at home and abroad.



Stanley Consultants

© Stanley Consultants, Inc. Not for further distribution, display, or reproduction

World-wide Project Experience



Markets



FEDERAL EXPERTISE

- Master Planning
- Program Management
- Asset Management
- Airfield Infrastructure
- Facility Design
- Secure Facilities
- Resilient Energy Systems
- Fuel/POL Systems
- Training Ranges
- Sustainable Design
- Commissioning
- Geospatial Services



PARTNERING WITH

- | | |
|-----------------------------|--|
| • Air Force | • Department of Veterans Affairs |
| • Army | • Federal Emergency Management Association |
| • Navy | • General Services Administration |
| • USACE | • US Fish and Wildlife Service |
| • Bureau of Indian Affairs | |
| • Department of Agriculture | |
| • Department of Energy | |

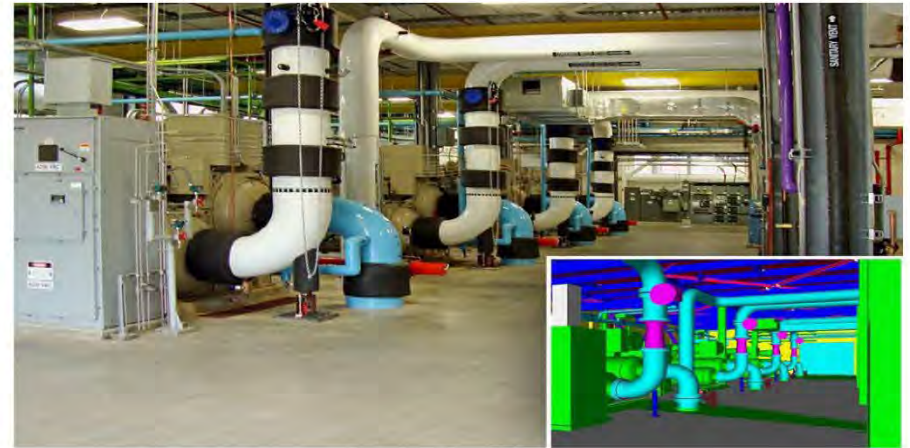


Stanley Consultants

© Stanley Consultants, Inc. Not for further distribution, display, or reproduction

ENERGY, POWER & ENVIRONMENTAL EXPERTISE

- Central Heating and Cooling
- Building Systems
- Renewable Energy
- Combustion Turbines
- Reciprocating Engines
- Hydropower
- Control Systems
- Energy Assessments/Audits
- Commissioning/RetroCx
- Environmental Permitting
- NEPA Planning
- Air Quality Control
- Environmental Remediation
- Natural Resource Conservation
- Wetlands



PARTNERING WITH

- | | |
|-----------------------|-----------------------------|
| • Chem/Pharma | • Private Institutions |
| • Food & Beverage | • Water Commissions |
| • Manufacturing | • Utilities |
| • Industrial | • DOTs |
| • Oil & Gas | • State / Local Governments |
| • Public Institutions | • Developers |



Stanley Consultants

© Stanley Consultants, Inc. Not for further distribution, display, or reproduction

POWER DELIVERY EXPERTISE

- Power Transmission Lines
- Substations / Switching Stations
- Electrical Distribution Systems
- Distributed Energy Generation
- Energy Resilience Microgrids
- Energy Storage Systems
- ROW Planning and Acquisition
- Construction Management
- Energy Assessments/Audits
- NEPA Planning
- Environmental Permitting



PARTNERING WITH

- | | |
|-------------------------------|---------------------------------|
| • Public/Municipal Utilities | • EPC Contractors |
| • Investor-Owned Utilities | • Distributed Energy Generators |
| • Rural Electric Cooperatives | |



Stanley Consultants

© Stanley Consultants, Inc. Not for further distribution, display, or reproduction

TRANSPORTATION EXPERTISE

- Highways
- Tollways
- Local Roads
- Interchanges
- Intelligent Transportation Systems (ITS)
- Planning/Corridor Studies
- Complete Streets
- Bridges and Structures
- ROW Planning and Acquisition
- NEPA Planning
- Environmental Permitting



PARTNERING WITH

- State DOTs
- Design/Build Contractors
- County, Municipal and MPO Transportation Agencies
- Land Developers



Stanley Consultants

© Stanley Consultants, Inc. Not for further distribution, display, or reproduction

WATER EXPERTISE

- Water Supply:
 - Production
 - Storage
 - Treatment
 - Conveyance
 - Reuse
- Wastewater:
 - Collection
 - Conveyance
 - Treatment
 - Disposal
- Industrial Process Water & Wastewater Treatment
- Waterway Navigation
- Flood Protection
- Ecosystem Restoration
- NEPA Planning
- Environmental Permitting



PARTNERING WITH

- Municipalities
- Industrial Facilities
- Design/Build Contractors
- Water, Sanitation and Irrigation Districts



Stanley Consultants

© Stanley Consultants, Inc. Not for further distribution, display, or reproduction



Federal Market

Services Offered

Planning

- Asset Management
- Conditions Assessment
- Environmental Analysis
- Feasibility Studies
- Master Planning
- Site Evaluation
- Urban Planning
- Utility Master Plans

Program Management

- Alternative Delivery Strategies
- Assessment & Validation
- Best Practices
- Capital Improvement Planning
- Capital Program Planning
- General Engineering Consulting
- Process & Procedure Assessment

Architecture

- Building Envelope
- Conceptual Design
- Construction Drawings & Specifications
- Cost Estimating
- LEED Certification
- Programming
- Security
- Sustainability
- Visioning

BIM and Data Integration

- 3D Animation
- 3D As-builts
- 3D Design
- 3D Modeling/3D Rendering
- Asset Management System Integration
- Building Information Modeling (BIM)
- Corridor Modeling
- GIS Mapping

Civil

- Environmental Assessment
- Permitting
- Site Development
- Storm Water Management
- Transportation, Transit, Rail & Trail
- Water/Wastewater/Water Resources
- Value Engineering

Commissioning

- Air Balancing
- Commissioning Plans & Specifications
- Functional Testing
- Operations & Maintenance Manuals
- Retro-commissioning
- Design Drawings Review
- Start-up/Testing/Sampling
- Training
- Warranty Programs

Construction Management

- Bidding & Contracting
- Claim Evaluation
- Cost Validation
- Construction Oversight
- Constructability Reviews
- Construction Scheduling/Expediting
- Contract Administration
- On-site Resident Engineer
- Value Engineering

Cost Estimating

- Claims Analysis & Resolution
- Constructability Reviews
- Estimating & Quantity Surveys
- Life-Cycle Cost Analysis
- Market Analysis
- Project Controls & Analysis
- Scheduling
- Value Engineering

Services Offered

Electrical

Power
Generation/Distribution/Transmission
Arc Flash Hazard Analysis
Cogeneration
Communications
Controls
Emergency Power
Lighting
Load Analysis
Security
Short Circuit Analysis
Uninterruptible Power Supply
Value Engineering

Right of Way

Acquisition & Negotiation
Compensation Estimates
Construction Permits
Land Value Market Studies
Public Involvement
Stormwater Pollution Prevention Plans
Title & Research
Web-based Project Management

Environmental

Air Quality & Emissions Control
Brownfield Redevelopment
Environmental Site Assessments
Grant Applications
NEPA Planning
Noise Abatement Studies
Rate Analysis
Regulatory Compliance/Permitting
Water Quality
Wetlands Delineation
Wastewater Treatment

Surveying

3D Laser Scanning
Boundary Surveys
Construction Surveys
Easement Surveys
Topographic Surveys

Mechanical

Air Filtration
Boilers
Building Automation Controls
Central Chiller/Heating Plants
Chillers
Cogeneration
Heat Recovery
Heating/Ventilation/Air Conditioning
Industrial Ventilation
Plumbing
Process Piping
Value Engineering

Structural

Anti-terrorism/Force Protection
Blast Analysis
Deep Foundation Analysis
Foundations & Equipment Supports
High Wind Resistant Analysis
New Construction & Additions
Progressive Collapse Analysis
Rehabilitations
Seismic Analysis
Value Engineering

Federal Leads



FEDERAL MARKET
LEADER

Todd Nicoll
303.925.8275
nicolltodd@
stanleygroup.com



AIR FORCE / SPACE FORCE
ACCOUNT LEADER

Dave Norton
757.298.8399
nortondave@
stanleygroup.com



ARMY ACCOUNT
LEADER

John Hudson, PE
563.264.6541
hudsonjohn@
stanleygroup.com



CIVILIAN AGENCIES
ACCOUNT LEADER

James Dendy
303.649.7826
dendyjames@
stanleygroup.com



EUROPE-MIDDLE EAST
ACCOUNT LEADER

Chris Day, PE
563.264.6237
daychristopher@
stanleygroup.com



INDO-PACIFIC
ACCOUNT LEADER

Brian Duffy
563.264.6224
duffybrian@
stanleygroup.com



NAVY / MARINE CORPS
ACCOUNT LEADER

Ron Plaseied
619.249.4754
plaseiedron@
stanleygroup.com



AIR FORCE / SPACE FORCE
PORTFOLIO MANAGER

Sherry Bunch
303.925.8287
bunchsherry@
stanleygroup.com



ARMY PORTFOLIO
MANAGER

Drew Kelly
563.264.6627
kellydrew@
stanleygroup.com



ARMY PORTFOLIO
MANAGER

Don Nester
303.649.8265
nestordon@
stanleygroup.com



NAVY / MARINE CORPS
PORTFOLIO MANAGER

Dennis Ellington
512.427.3637
ellingtondennis@
stanleygroup.com



FEDERAL CLIENT
PORTFOLIO MANAGER

Tim Rodriguez
563.264.6254
rodrigueztimothy@
stanleygroup.com

M M
MOTT
MACDONALD

Mott MacDonald

Sebastian Pastor, PE

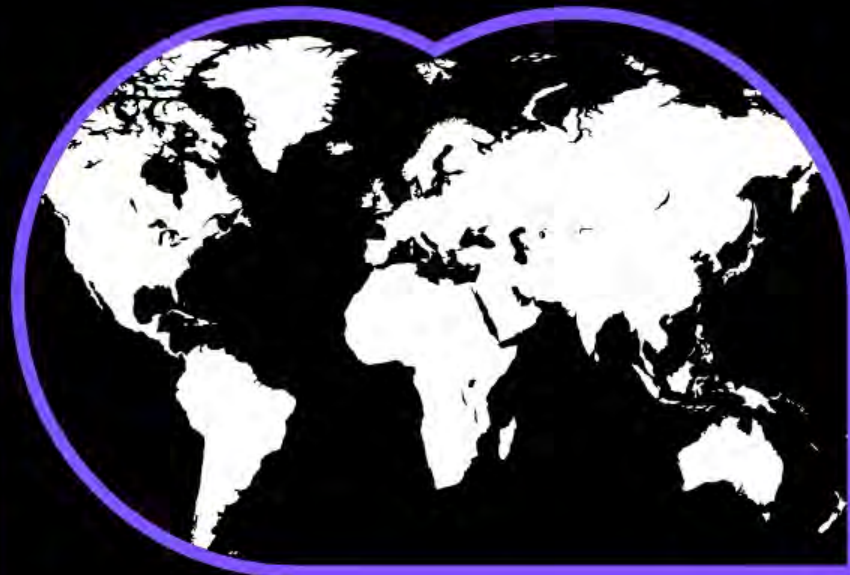


GLOBAL



£2.5bn

revenue



20,000

people

150+

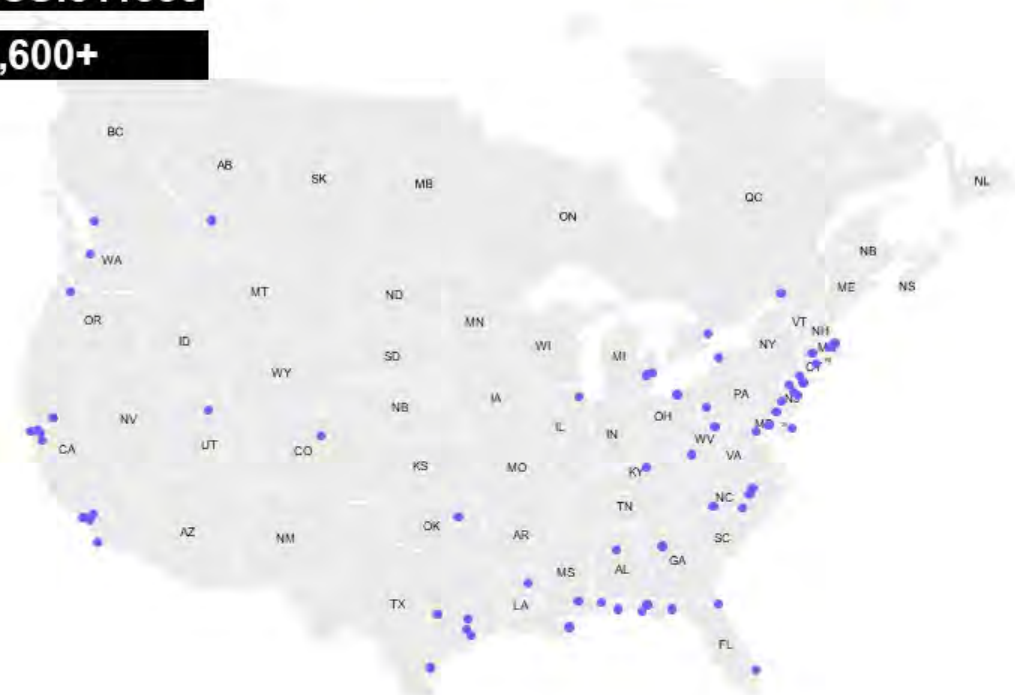
years of heritage

150 offices in over
40 countries

OUR OFFICES (USA)

Primary NAICS:541330

USA Staff: 2,600+



HEADQUARTERS Metropark (Iselin)

UNITED STATES

AL Birmingham	NC Charlotte
Mobile	Fayetteville
CA Los Angeles	Fuquay-Varina
Ontario	Raleigh
Orange	NJ Freehold
Sacramento	Iselin
San Diego	Morristown
San Francisco	NY Buffalo
San Jose	New York City
San Ramon	Tarrytown
Oakland	OH Cleveland
CO Lakewood	OK Tulsa
CT Rocky Hill	OR Portland
DE Newark	PA Philadelphia
Rehoboth	Pittsburgh
FL Chipley	TX Austin
Delray Beach	Corpus Christi
Jacksonville	Pearland
Panama City	The Woodlands
Pensacola	West Houston
Tallahassee	UT Salt Lake City
GA Duluth	VA Arlington
IL Chicago	WA Seattle
KY Lexington	WV Charleston
LA West Monroe	Morgantown
New Orleans	
MA Boston	CANADA
Westwood	AB Calgary
West Springfield	BC Vancouver
MD Baltimore	ON Toronto
MI Detroit	QC Montreal
Plymouth	
MS Hattiesburg	

OUR MARKETS

BUILDINGS

Airports
Commercial buildings
Healthcare
Healthy places
Metro buildings
Public buildings
Venues

DEFENSE AND SECURITY

Air
Defence equipment programmes
Defence nuclear
Fuelling
Land
Maritime

ENERGY

Electrical networks
Energy transformation
Hydrogen and fuel networks
Hydropower
Nuclear
Renewables and energy storage
Thermal transition

ENVIRONMENT AND SOCIETY

Accessibility, inclusion and equity
Biodiversity and nature
Climate change
Environmental assessment and management
ESG and sustainability
Planning, permitting and consents
Social value
Stakeholder consultation

TRANSPORT

Aviation
Highways
Metros
Ports, coastal and offshore
Rail
Transport planning

WATER

Flood risk and rivers
Wastewater collection, treatment and reuse
Water resources
Water treatment and transmission

COMPREHENSIVE A-E SERVICES

BUILDING DESIGN

- Architecture and interiors
- Structural engineering
- MEP/FP engineering
- Fire life safety
- Security systems
- Roofing/building envelopes
- Design-build

ADVISORY

- Asset management
- Disaster response
- Facility condition assessments
- Digital transformation
- Program management
- Programming charrettes
- Resiliency and sustainable design
- Energy conservation

ENGINEERING AND INFRASTRUCTURE

- Airfield engineering
- Civil/site
- Landscape architecture
- Geotechnical investigations
- Fueling design and engineering
- Shoreline restoration (marine and coastal)
- Stormwater management
- Water/wastewater systems
- Environmental services
- Emerging contaminants (PFAS/PFOS)
- Natural resources
- Land development and surveying
- Transportation and traffic

We have worked extensively with defense and federal agencies across the globe designing new construction, repair, alteration, and maintenance projects for various facility types.

2,600

staff in **60+** North America offices

20,000

staff globally

160

offices in **50** countries

60+

years of federal experience

600+

projects for DoD clients

SEEKING

Firm Type: Multi-Discipline A/E Firm
Status: Large (0 SB MPA JV)

- ❖ **A/E Primes, Small Businesses, and Design-Build Partners**
- ❖ **Qualified SB teaming partners in the Mid-Atlantic (SDVOSB, WOSB, SDB and HUBZone)**

TARGET GROWTH

- ❖ **Increase our active DoD and Federal Agency contract portfolio and client base in the Mid-Atlantic (USACE, NAVFAC, NPS, etc...)**

CONTACT US

Firm Type: Multi-Discipline A/E Firm
Status: Large (0 SB MPA JV)



RICK KAISER, PMP, NAC
MAJ GEN, US ARMY (RET)
Strategic market leader
federal and defense
rick.kaiser@mottmac.com



DAVID LEACH, PE
Key strategic
army lead
david.leach@mottmac.com



SEBASTIAN PASTOR,
PE, PMP, LEED AP
Federal portfolio manager
sebastian.pastor@mottmac.com



PAULA TOM
Federal development
manager
paula.tom@mottmac.com

WWW.MOTTMAC.COM

WOODS • PEACOCK

ENGINEERING CONSULTANTS



SAME NoVA Post 10th Annual B2B Event

December 11, 2025



OUR SERVICES

Structural Engineering
Blast | AT/FP

OUR CERTIFICATIONS



Small Local Business Enterprise
(SLBE)



U.S. Small Business
Administration

WOSB CERTIFIED

CERTIFIED



Small,
Women and
Minority-Owned

Supplier Diversity Strengthens the Commonwealth

by the Virginia Department of Small Business & Supplier Diversity







WOODS • PEACOCK
ENGINEERING CONSULTANTS

**Fairfax County Park Authority
Woodlands Stewardship Education Center**

NEW DESIGN



WOODS • PEACOCK
ENGINEERING CONSULTANTS

**Architect of the Capitol
US Capitol**

RENOVATION

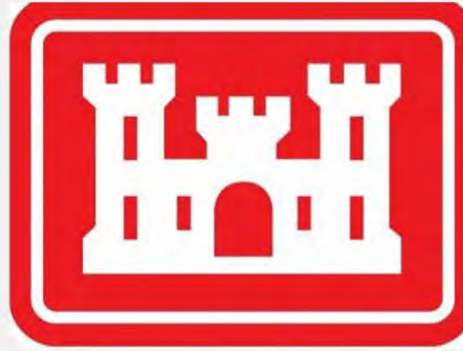












Smithsonian



WOODS • PEACOCK

ENGINEERING CONSULTANTS



CORY SAUER, PE

Senior Principal

cory@woodspeacock.com



SETH TAKOCH

Associate

seth@woodspeacock.com



SPECIAL THANKS TO THE SAME NOVA POST'S 10TH ANNUAL BUSINESS-TO-BUSINESS (B2B) ENGAGEMENT SPONSORS

