



SAME NoVA Post 10th Annual Business-to-Business (B2B) Engagement

National Museum of the U.S. Army at Fort Belvoir
December 11, 2025





SPECIAL THANKS TO THE SAME NOVA POST'S 10TH ANNUAL BUSINESS-TO-BUSINESS (B2B) ENGAGEMENT SPONSORS



The Diallo Group



Sidney Elam, AICP, PTP

Director of Planning

Jeremiah Huth, AIA, NCARB, LFA

Director of Design

SAME NoVA Post B2B Engagement | 12.11.2025

Our Principles

In Action

Empower



Educate



Elevate



Master Planning

Capabilities

- Installation Development Plans (IDPs) and Area Development Plans (ADPs)
- Comprehensive Master Planning for DoD and federal campuses
- Facility Utilization and Space Optimization Studies
- Transportation, Infrastructure, and Utility Planning
- Environmental and Climate Resilience Planning
- Programming and DD1391 Support



PRIMARY CLIENTS

DoD Army, Navy, Air Force, Marine Corps – CONUS & OCONUS
Department of Veterans Affairs (VA)
General Services Administration (GSA) & Federal Campuses
U.S. Army Corps of Engineers (USACE) & NAVFAC
Municipal, State & Public Sector Entities

Geospatial & GIS

Capabilities

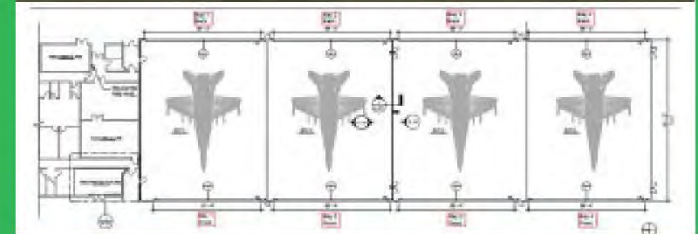
- Geospatial Data Collection & Analysis
- Installation Planning Support
- System Integration & Data Reconciliation
- Utility Mapping & Infrastructure Analysis
- Custom Map & Dashboard Creation
- Geodatabase Management
- Environmental & Land Use Mapping



Design & Architecture

Capabilities

- Full-Service Architecture & Engineering Design
- Facility Programming & Planning (DD1391 Support)
- Secure Space Design (SCIF, SAPF, and Controlled Areas)
- Design-Build Bridging Documents & Collaboration
- Interior Architecture & Workplace Strategy
- Adaptive Reuse and Renovation of Legacy Facilities
- Sustainable, Resilient, and Net-Zero Design



PRIMARY CLIENTS

U.S. Army Corps of Engineers (USACE)

Naval Facilities Engineering Systems Command (NAVFAC)

Department of State – Bureau of Overseas Buildings Operations (OBO)

U.S. Air Force Civil Engineer Center (AFCEC)

General Services Administration (GSA)

Construction Management

Capabilities

- On-Site Construction Oversight
- Schedule & Cost Management
- Submittal & RFI Review
- Quality Assurance / Quality Control (QA/QC)
- Commissioning & Closeout Support
- Design-Build & Design-Bid-Build Support
- Site Safety & Risk Mitigation



PRIMARY CLIENTS

U.S. Army Corps of Engineers (USACE)

Naval Facilities Engineering Systems Command (NAVFAC)

Department of State – Bureau of Overseas Buildings Operations (OBO)

U.S. Air Force Civil Engineer Center (AFCEC)

Defense Logistics Agency (DLA)

Looking to the Future

Rooted in Service, Driven by Impact



2025 architecture | engineering | construction

The Diallo Group
ANNUAL \$5,000
**ERNEST MATHEWS
SCHOLARSHIP**

dIONYX
The Diallo Group





IMEG Consultants Corp.

FIRM OVERVIEW/INTRODUCTION



SAME NOVA POST – B2B
2025

IMEG AT-A-GLANCE

- › 105 collective years
- › 2,800 Employees
- › U.S. based & employee-owned
- › 100 Locations
- › 650+ Licensed Engineers
- › \$540M in Annual Revenue
- › #52 / Top 500 design firm

#4

ENGINEERING FIRM IN U.S.

(Building Design + Construction 2024)



BUILDING DESIGN: ENGINEERING & PLANNING

- Structural
- MEP / FP
- Technology Design
- Security Design & Engineering
- Acoustics & Noise Control
- Architectural Lighting
- Medical Equipment Planning
- Parking Design & Planning

INFRASTRUCTURE: DESIGN & PLANNING

- Civil Engineering
- Land Development & Surveying
- Urban Planning & Design
- Transportation Planning & Design
- Environmental Planning & Permitting
- Landscape Architecture & Planning
- Water / Wastewater
- Subsurface Utility Engineering
- Community Engagement

SUSTAINABILITY & ENERGY SOLUTIONS

- Energy Modeling
- Decarbonization Analysis
- Life-cycle Cost Analysis
- Embodied Carbon Analysis
- LEED & WELL Consulting

BUILDING PERFORMANCE

- Commissioning / Retro-Commissioning
- Monitored-based Commissioning
- Building Performance Optimization

CONSULTING & ADVISORY SERVICES

- Building Intelligence & Integration
- Technology Advisory Services
- Healthcare Information Technology
- Security Consulting

PROCESS ENGINEERING

- Automation & Controls
- Chemical Process
- Silo Design & Inspection
- Bulk Processing

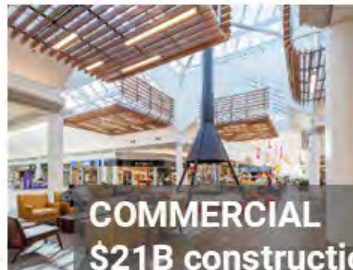
Abstract



MARKET SECTORS – CONSTRUCTION VALUES PAST 10-15 YEARS



ARTS & CULTURE
\$1.5B construction value



COMMERCIAL
\$21B construction value



EDUCATION
\$90B construction value



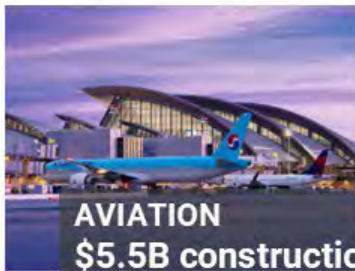
AUTOMOTIVE
\$3B construction value



CORPORATE
\$10B construction value



FEDERAL
\$21B construction value



AVIATION
\$5.5B construction value



DATA CENTERS
\$3.5B construction value



GAMING & ENTERTAINMENT
\$16B construction value

MARKET SECTORS – CONSTRUCTION VALUES PAST 10-15 YEARS



GOV'T – STATE / LOCAL
\$30B construction value



HOUSING
\$7B construction value



SPORTS & RECREATION
\$20B construction value



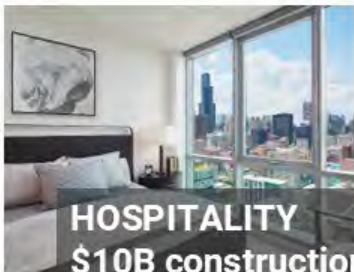
HEALTHCARE
\$120B construction value



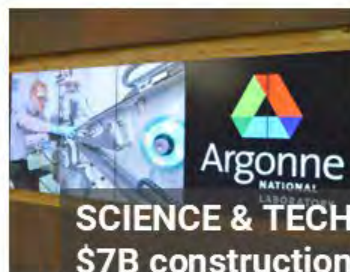
INDUSTRIAL / R&D
\$8B construction value



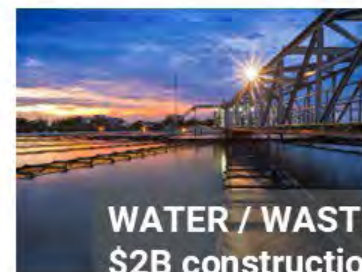
TRANSPORTATION
\$5B construction value



HOSPITALITY
\$10B construction value



SCIENCE & TECHNOLOGY
\$7B construction value



WATER / WASTEWATER
\$2B construction value

Top 20

FEDERAL GOVERNMENT SECTOR ENGINEERING FIRM IN U.S.

- › **30+** Year History Supporting Federal Projects
- › Supporting **Civilian** and **Military Agencies** Nationwide and Internationally
- › **3,800+** Projects Completed
- › **DB and DBB Experience** on projects of varying size and complexity

Federal Portfolio Overview



Smithsonian National Museum of African American History and Culture, Washington, DC

WASHINGTON, DC

- › Smithsonian National Museum of African American History and Culture
- › U.S. Coast Guard Headquarters
- › World War I Memorial

VIRGINIA

- › FBI Training Academy, Quantico
- › CIA Building, Langley
- › FBI Central Records Complex, Winchester
- › FBI Field Office, Chesapeake
- › Semper Fidelis Memorial Chapel
- › National Park Service Fredericksburg & Spotsylvania National Military Park
- › Reagan National Airport (DCA)

MARYLAND

- › Intelligence Community Campus (ICC-B)
- › Fort Meade DISA Headquarters Facility
- › Joint Base Andrews
- › Fort Meade

Local Federal
Government Experience



U.S. Coast Guard Headquarters



FBI Central Records Complex

- › U.S. Department of State New Embassy Compound, Libreville, Gabon
- › U.S. Department of State, New Consulate Compound, Surabaya, Indonesia
- › U.S. Department of State Embassy Ambassador's Residence, Managua, Nicaragua
- › U.S. Embassy Luxembourg, Luxembourg
- › U.S. Embassy, Suva, Fiji
- › U.S. Embassy, Mbabane, Swaziland
- › U.S. Embassy, Monrovia, Liberia
- › New U.S. Embassy Compound, N'Djamena, Chad
- › New U.S. Embassy Compound, Reykjavik, Iceland
- › U.S. Department of State New Marine Security Guard Residence, Brazzaville, Congo
- › U.S. Embassy – Marine Security Guard Residence, San Jose, Costa Rica
- › Camp Shield, Baghdad, Iraq
- › Camp Mitchell Naval Station, Rota, Spain

International Federal
Government Experience



U.S. Department of State, New Consulate Compound, Surabaya Indonesia



USACE Omaha District, Buckley SFB – Space Based Infrared System (SBIRS) Operations Support Facility (CO)



NAVFAC SE – BEQ, Corry “A” School (FL)



Marine Forces Reserves - MARFORRES Headquarters (LA)



USACE Mobile District, Tyndall AFB – D-B RFPs, Multiple Maintenance & Repair Projects (FL)



NAVFAC SE - Powertrain Transmission Preassembly and CEP (Phases 1-5) (TX)

IMEG DoD Experience





Federal Project Highlights Firm-Wide





➤ Traditional Surveying

- Boundary, Topographic and As-built Services
- Stakeout Services

➤ Reality Capture and Modeling

- SLAM Scanning, Static high accuracy captures
- Drone Services (Bathymetric, UAV)
- Revit and AutoCAD modeling and Web Scene Views

➤ SUE Services

- Utility Designation, Mapping (Electromagnetic/GPR)
- Test Pitting
- CCTV Pipe Inspections
- Vault Cleaning, inspections and Jetting

Surveying and Subsurface Utility Designation and Mapping



The Future for IMEG in the Federal Market



PARTNERSHIPS AND RELATIONSHIPS





SAME NoVA B2B Engagement

THURSDAY, DECEMBER 11TH

NATIONAL MUSEUM OF THE U.S. ARMY AT FORT BELVOIR

WHO WE ARE

Our History

For more than 40 years, we've built the business around our talented and diverse team of professionals, with each one adding exceptional discipline know-how and market insight.



NATIONALLY RECOGNIZED. LOCALLY PREFERRED.

About Galloway

40+ Years of experience



Multi-disciplinary in-house design team

Licensed in

50

States and the
District of Columbia

300+

Professionals

Denver
Headquarters &

15

Regional Offices



NATIONALLY RECOGNIZED. LOCALLY PREFERRED.

Locations

Galloway has more than 300 professionals holding registrations in all 50 states along with the District of Columbia. We've designed our way through thousands of projects on behalf of thousands of clients across the country.



CAPABILITIES

Capabilities & Disciplines

Our unique, collaborative approach provides all key services under one roof to streamline the development process.

SURVEY

- Construction Staking
- Drone/UAS Services
- High Definition Surveying (HDS)
- Oil & Gas Surveying
- Bathymetric Surveying
- GIS

LAND DEVELOPMENT

- Civil Engineering
- Development & Entitlements
- Landscape Architecture
- Planning
- Site Lighting & Photometric Design
- Water Resources
- Traffic Engineering
- Transportation Planning

ARCHITECTURE & DESIGN

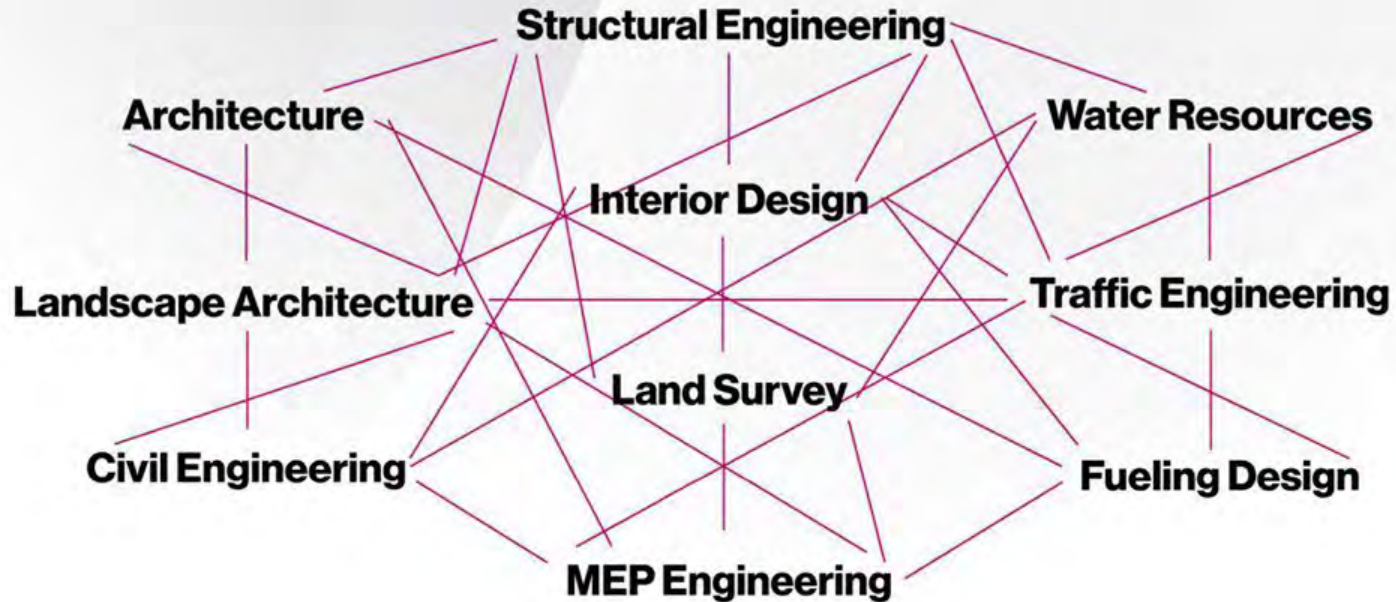
- Architecture
- Commissioning
- Electrical Engineering
- Interior Design
- Mechanical/Plumbing Engineering
- Structural Engineering

FUELING

- Fuel System Design

Discipline Integration

FULL SPECTRUM APPROACH



WHO WE ARE

Fairfax, VA and Bethesda, MD

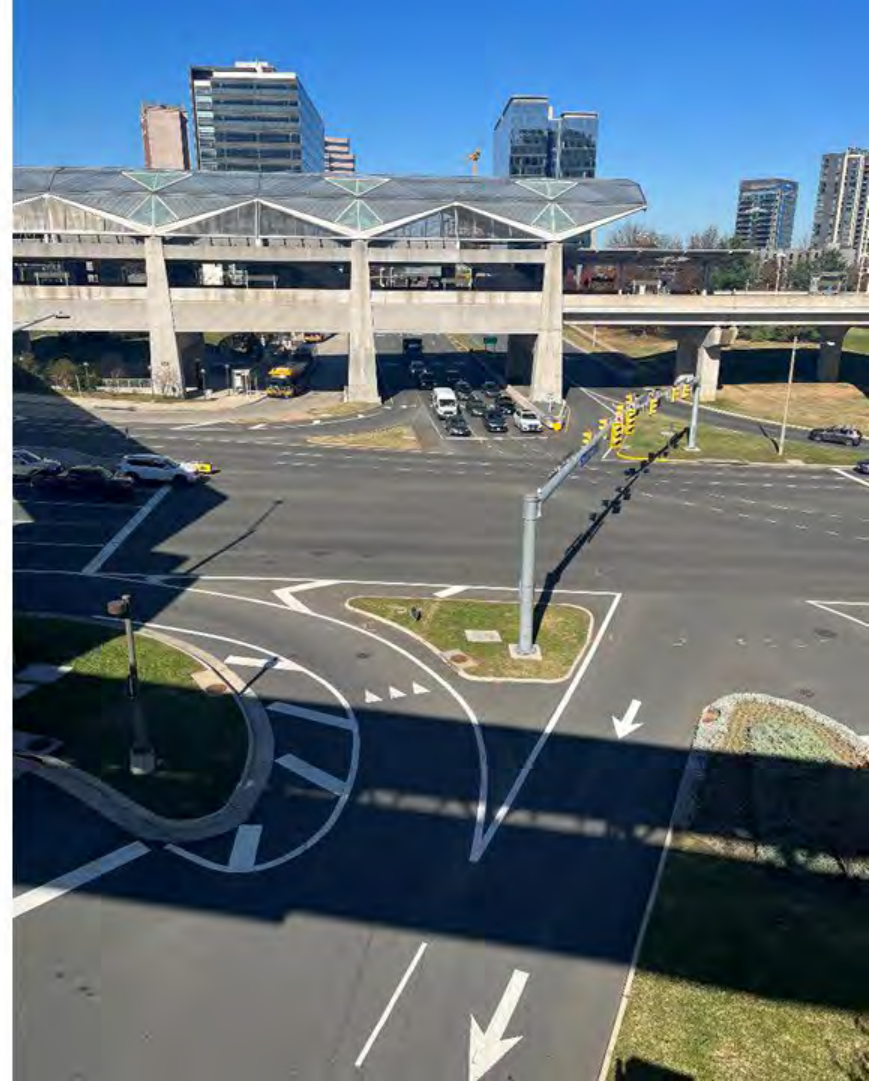
**Specializing in Transportation Planning and
Traffic Engineering**

**Jim Watson, Sr. Transportation Planning Project
Manager**

JimWatson@gallowayus.com

Will Johnson, Regional Manager

WillJohnson@gallowayus.com



CAPABILITIES

Federal Group

Robert Giles, Director of Federal Project Development

Stacy Keiser, Federal Program Manager

- Previous USACE ACO and COR with over 50 years of combined Government experience

Contact Info:

RobertGiles@gallowayus.com

StacyKeiser@gallowayus.com





FEDERAL CAPABILITIES AND AGENCIES

- **Underground Utilities, Roads**
- **SCIFs, Entry Control Gates**
- **Maintenance Facilities**
- **Hangars, Munition Storage, ATPF**
- **Dormitories, Wellness Center**
- **Veteran Cemeteries, Labs**
- **EV Charging Stations**
- **Transportation & Parking Planning**

Agencies:

- **DoD (Army Corps of Engineers, Space Force, Navy)**
- **Dept of Veteran Affairs, Dept of Interior**
- **Bureau of Indian Affairs, Bureau of Reclamation**
- **U.S. Postal Service**
- **NASA, FAA, NPS and others**



Mason & Hanger

A Day & Zimmermann Company

SAME NoVA Post 10th Annual 2025 Business-to-Business (B2B) Engagement

December 11, 2025

Presented by Jonathan Fisher, PE, PMP



About Mason & Hanger

At Mason & Hanger, “Building a More Secure World®” is more than just a tagline. For almost 200 years and on thousands of projects in 175 countries and 49 states, supporting the mission of the U.S. federal government has been our focus.

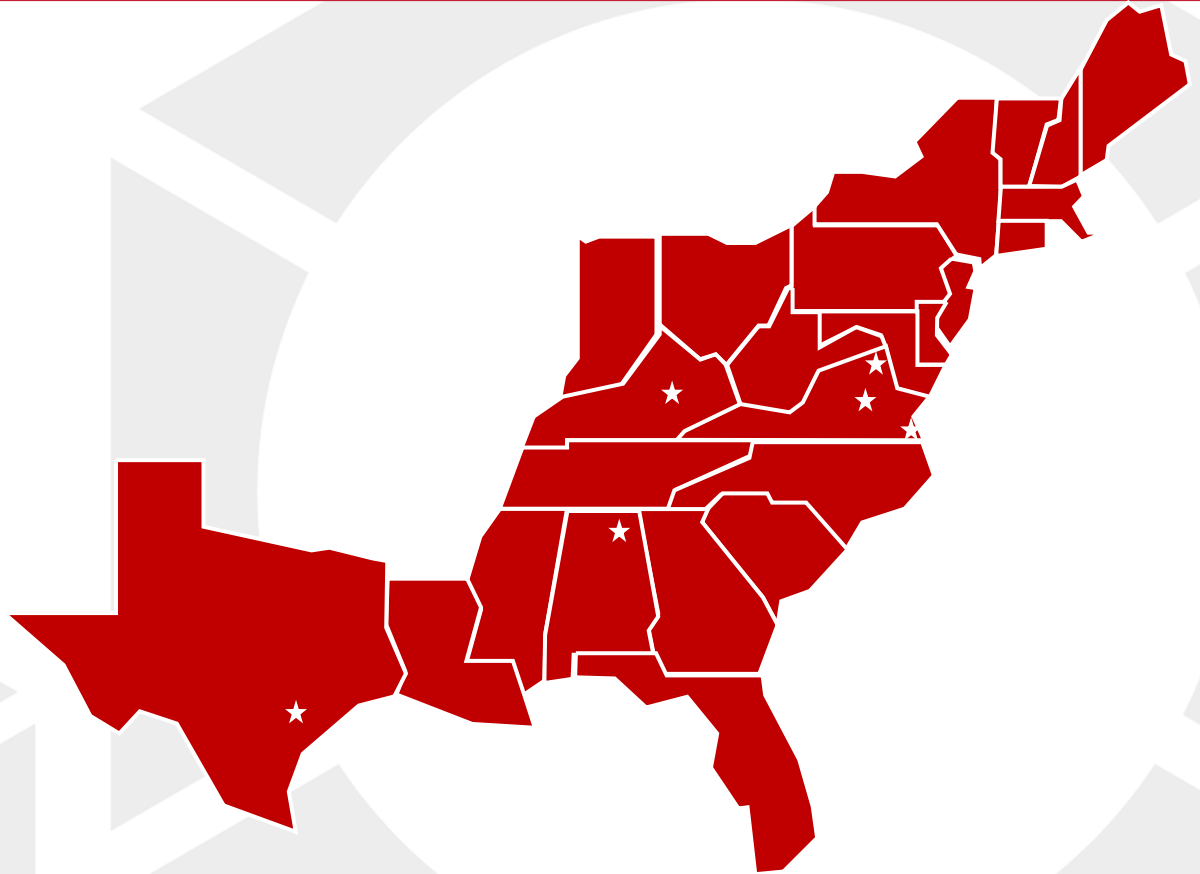
With a full array of in-house multidiscipline professionals and a staff of more than 250, we specialize in the planning and design of secure, mission-driven facilities.



Central Campus, Fort Lee, VA

Mason & Hanger Office Locations

- » Glen Allen, VA
- » Virginia Beach, VA
- » Chantilly, VA
- » Huntsville, AL
- » Lexington, KY
- » San Antonio, TX



- » Continuously maintained facility security clearances up to Top Secret for over 30 years.
- » Large number of cleared personnel through all disciplines.

Mason & Hanger's Services

- » Architecture, Interior Design and Master Planning
- » Engineering
 - » Civil, Structural, Blast Design, Mechanical, Plumbing, Electrical, Telecommunications, Life Safety / Fire Protection
- » Energy & Sustainability Services
- » Security Design Services / Cybersecurity
- » Commissioning / Retro-commissioning
- » Technology Design
- » Construction Phase Services



Design 4.5 Microgrid, Joint Base Lewis-McChord, WA



*Secure CYBER Instruction Facility
Moran Hall, Fort Gordon, GA*

Mason & Hanger's Facility Types



Headquarters



Firing Ranges



*Barracks /
Dormitories*



*Horizontal /
Roadway / Utilities*



*Administration /
Office*



*Tactical Training
Facilities*



Aviation / Airfields



*Training
Campuses*



*Industrial /
Munitions
Production*



U.S. Embassies

Mason & Hanger's Niche Specialties

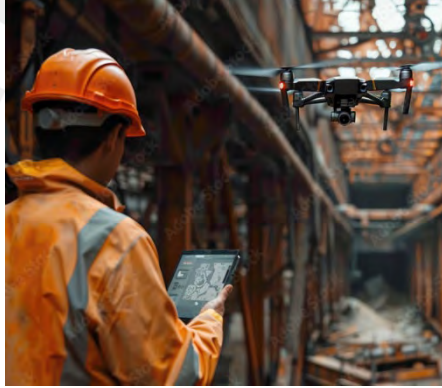
Microgrids / CUPs



Bulk Fuel Farms



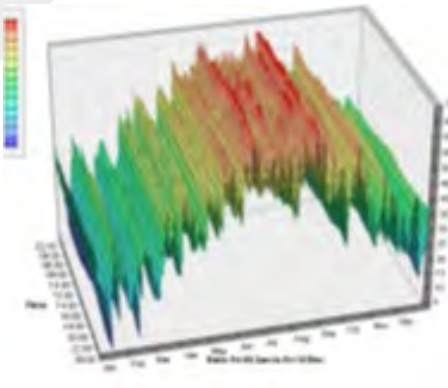
3D Laser Scanning



Augmented Reality



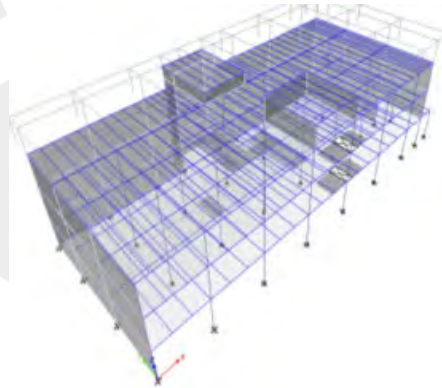
Energy Modeling



Commissioning



Specialized Blast Design



Building Performance (LEED)



Mason & Hanger's Regional Experience

Mason & Hanger performed its first project with the United States Army Corps of Engineers in 1902. Since then, we have successfully completed thousands of DOD projects for all Active and Reserve components across the United States, including:

- » Hard Skills Training Area, Foreign Affairs Security Training Center (FASTC), Fort Pickett, VA
- » Vehicle Maintenance Shop (VMS) and Area Maintenance Support Activity (AMSA), Richmond, VA
- » U.S. Army Reserve Center, Richmond, VA
- » Renovation of Telecommunications and Information Systems Directorate (TISD), B4397, MCAS Cherry Point, NC (*one of 29 Task Orders M&H has completed at Cherry Point since 2020*)
- » TATB Building 1830 Design, Naval Surface Warfare Center, Indian Head, MD
- » IRS Computing Center MEP Addition, Kearneysville, WV
- » Design/Build Flight Dynamics Research Facility, NASA Langley Research Center, Hampton, VA

Mason & Hanger's International Experience

Mason & Hanger has worked in over 175 countries with LEED Accredited Design on over 120 completed projects.



Mason & Hanger's LEED Accredited Design

Mason & Hanger led the engineering efforts for OBO's first LEED Platinum Projects in Europe (Helsinki) and Africa (Niamey).



Mason & Hanger led the engineering efforts for OBO's 1st LEED Platinum Projects in Europe (Helsinki) and Africa (Niamey)

120

**LEED Projects
Completed**

1 Trillion

BTUs of Energy Saved

1st

**OBO LEED Platinum
(Europe and Africa)**

Mason & Hanger's Recent Awards

American Council of Engineering Companies (ACEC) Engineering Excellence Awards (EEA)

- » 2024 Virginia Grand Award Winner for New Embassy Compound, Niamey, Niger (featured in *ArchitectureDC* Fall 2024)
- » 2025 ACEC National Honor Award (Top 14 Finalist)

NEW EMBASSY COMPOUND U.S. DEPARTMENT OF STATE

NIAMEY, NIGER

CHALLENGES
Mason & Hanger was tasked to design a high performing and adaptive embassy without needing to be dependent on the surrounding community.

SOLUTIONS
Mason & Hanger incorporated building performance techniques throughout the design with a wastewater treatment plant, on-site water purification systems, natural shading systems, and solar panels. In addition, water-cooled chillers cool the new embassy while highly efficient photovoltaic panels produce 45% of the power required for the office buildings.

INNOVATION
Mason & Hanger also performed extensive energy and building performance analysis to engineer an optimized microgrid with highly efficient PV panels and BESS

Entry Title & Location: New U.S. Embassy Campus, Niamey, Niger
Owner: U.S. Department of State
Client: Bureau of Overseas Buildings Operations
Contractor: B.L. Harbert
Design Architect: The Miller Hull Partnership
Architect of Record: Page
Entrant: Mason & Hanger / Richmond, VA

ACEC
AMERICAN COUNCIL OF ENGINEERING COMPANIES
of Virginia

Mason & Hanger
A Day & Zimmermann Company

Growing Mason & Hanger's Small Business and Design-Build Partners Portfolio

Seeking firms that provide:

- » Civil Works
- » Surveying
- » Geotechnical Services
- » Environmental Services
- » If you are a **small business**, we'd love to explore partnership opportunities.
- » With 30+ years of **Design-Build experience**, M&H is also seeking more Design-Build partnerships.
- » Please connect with us **after the presentations** to discuss future collaborations.





Mission Critical Technology Infrastructure Solutions

Secure and Resilient ... Smart and Efficient

CORPORATE OVERVIEW

www.allcomgs.com



Organization

Headquarters: Lake St. Louis, Missouri

Offices: Reston, Virginia and Parsippany, New Jersey

Security Clearance: Top-secret Facility Clearance (Lake St. Louis)

Primary NAICS: Small Business, 335999 Wireless Telecommunications Centers (except satellite, 1500 employees)

DUNS: 188632447

CAGE: 1TR54

TIN: 43-1807811

UEI: N3VDYQV6KNU4





Core Capabilities

Data Center Solutions

- Data Center Assessment (Energy, Power, Cooling, Cabling and Physical Security)
- Data Center Engineering and Design
- Data Center Infrastructure Management and Thermal Management and Cooling Solutions
- Environmental Monitoring, and Physical Security Systems
- Equipment Racks, Cable Ladder Racks and Conveyance Systems
- AllCom is a Diamond Partner authorized reseller for Emerson Network Power and all Vertiv (Liebert) Products and Services.

Power Distribution Systems

- Power Systems Design and Engineering
- AC Uninterruptible Power Supplies, AC Buss Systems, DC Power Plant Installation, Batteries, Rectifiers, and Inverters; Automatic Transfer Switches;
- Power Distribution Units; Ground Rings, Lightning and Fault Protection Subsystems; Back-up Generators/UPS; and Advanced Fuel Cell Engines (1kW – 100kW)

Core Capabilities

Specialized Secure Construction

- Design and Engineering (including CAD); Professional Project and Site Management;
- Outside and Inside Plant; Design, Build, and/or Remodeling of Communication Shelters, Network Operation Centers, Data Centers, Huts/Vaults, SCIFs,
- Power Systems (AC/DC Power, Grounding UPS/Generators); Mechanical, Electrical, and Plumbing Systems; Fire Suppression & Environmental Monitoring Systems; Site Physical Security (Cameras, Alarms, Access/Egress); and Site Preparation



Structured Cable Plant Design and Installation

- Voice and Data Infrastructure Cabling; Copper and Fiber Optic Cabling Solutions;
- Cable System Management (including documentation and CAD);
- Protected Distribution Systems (PDS) for SIPRNET/Classified
- Applications; Outside Plant – Multi-Building Communications with Fiber Optics (single-mode and multi-mode)
- BICSI-certified Registered Communications Distribution Designers (RCDD) and BICSI-certified Technicians



Core Capabilities

Unified Communications

- Central Office Planning, Layout and Design;
- Installation and Infrastructure Systems supporting the installation of Dense Wavelength Division Multiplexing (DWDM) Installation/System Turn-up;
- Gigabit-capable Passive Optical Networks (GPON); VoIP Systems;
- Fully Integrated Intelligent Alarm Systems; MDF/IDF Verification and Expansions;
- Equipment Racks, Cable Ladder Rack, and conveyance Systems; and Full Turn-key CO Builds. Command – Control Center

International Secure Construction

- Cleared American Workers (CAW) for “sensitive” U.S. Government facilities located both domestically and overseas
- Technical services and capabilities including Program Management, Engineering, Environmental and Mechanical Systems, Plumbing and Electrical Systems, Fire Protection, Interior Finishes, Equipment Installation, Threat Mitigation and Security Systems, and Technical Professional Services.





Operate Worldwide

- United States (CONUS), Hawaii, Guam,
- OCONUS, Japan, Germany, South Korea, Greece, Spain, Italy, Diego Garcia, Bahrain, Kuwait, United Arab Emirates, Saudi Arabia, Libya, Qatar, South Africa

Past Performance

- Operations Center - Camp Humphreys, South Korea
- Multiple Projects - Electrical Upgrade, Raised Floor, Yokota, Japan
- USMC Camp Butler, multiple telecommunication upgrades - Okinawa, Japan
- National Geospatial Agency (NGA Phase 1 & 2) - St. Louis, MO
- Veterans Affairs - Computer Rooms Power Distribution Units Replacement, Austin, TX
- USAF Counter-UAS, Barksdale, LA



Organization

Certifications and Licenses:

- ISO 9001:2015
- DCJS Security License No: 11-15696
- NY State Security License No: 120000324490
- NJ Burglar Alarm License No: 34BX00024100
- FL State Security License No: EF20001586
- VA State Security License No: DCJS 11-15696
- NY Port Authority and NY Metropolitan Transit Authority
- TRACE and FICAM
- HSPD-12 Service Provider
- Certified Systems Engineer ICAM PACS (CSEIP)

Prime Contracts:

- GSA MAS: 47QSWA19D004F
- U.S. Air Force PCCIE: FA8217-21-D-0010
- DLA Network Infrastructure Support Services (NISS) IDIQ: SP4701-22D-0018
- DOS, Overseas Building Operations IDIQ: 19GE5024D0039





Business-to-Business (B2B) Engagement Event

About EA Engineering, Science, and Technology, Inc., PBC

Prepared for:

SAME
Northern Virginia Post

December 11 2025

Prepared by:

Sandy Brown
Geoff Kiffe

EA® EA Engineering,
Science, and
Technology, Inc., PBC

Integration of Engineering, Science, and Technology



5+ decades in business

700+ staff in 27 nationwide offices

100% employee-owned
Public Benefit Corporation

80% of business is
from repeat clients

\$255M annual revenue

~1,700 projects for over
575+ clients executed annually

Our Team's Professional Qualifications



~200 with Advanced Degrees

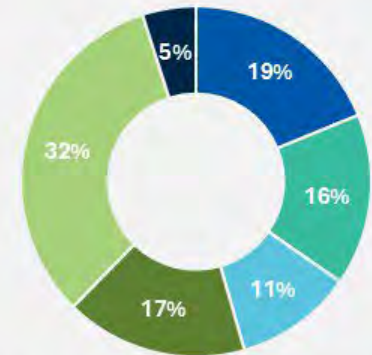


~200 with Professional Registrations



12 Year Average Tenure for Mid-
and Senior-Level Professionals

EA Office Locations



■ Engineers ■ Support ■ Field/Techs
■ Geologists ■ Scientists ■ IT

EA's PBC Framework and CSR Program



Recognized Expertise and Professional Industry Support



environmentanalyst | top 100



Sectors Served



Federal



State



Municipal



Air Carrier & Airport



Rail



Marine Transport



Food & Beverage



Utility & Energy



Pharmaceutical



Aggregate & Mining



Agriculture



Chemical



Heavy Industry



Insurance

Leader in Sustainable Business Practices

- Largest 100% employee-owned PBC in the environmental consulting and professional services sector
- We recognize our role in our clients' value chain
 - Annual, transparent reporting on public benefits and sustainability, including carbon footprint
 - Voluntary commitments to GRI Universal Standards and SASB reporting frameworks
 - Participates in 3rd-party Corporate Social Responsibility (CSR) reviews (e.g., EcoVadis and ISN ESG Plus)
- Nationally recognized, award-winning CSR Program
 - EcoVadis 2019 Best Performer – North America
 - “Best of the Best” in *Fifty by Fifty*'s Mission-Led Employee-Owned Firms report
 - Multiple *Environmental Business Journal* Awards
 - State-recognition – Maryland Green Registry



Addressing Complex Client Challenges

- Environmental Management & Sustainability
- Health & Safety/Industrial Hygiene
- Infrastructure Engineering
- Climate Change/Resilience
- Site Characterization & Remediation
- Technology
- Laboratory Services
 - Ecotoxicology
 - Industrial Wastewater
 - Aquatic Biology
- Solid Waste Management



The Pillars of
Mimar Architects & Engineers, Inc.
Mimar Ponte Mellor



Years Operating

28



ARCHITECTS

No. of Employees

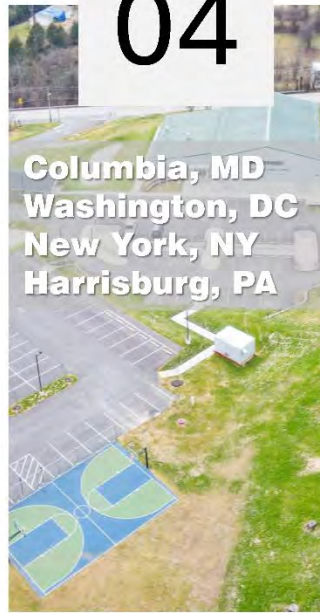
34



CM/ INSPECTORS

Offices

04



Columbia, MD
Washington, DC
New York, NY
Harrisburg, PA

PLANNERS

Tasks/Projects
Completed

2000



Federal
City/State/ Local
Aviation
Transit/
Transportation
Community/ Rec
Centers
Civic
Industrial
K-12/ Universities
Healthcare

INTERIOR DESIGNERS

Clientele

30+



ENGINEERS

What sets us Apart

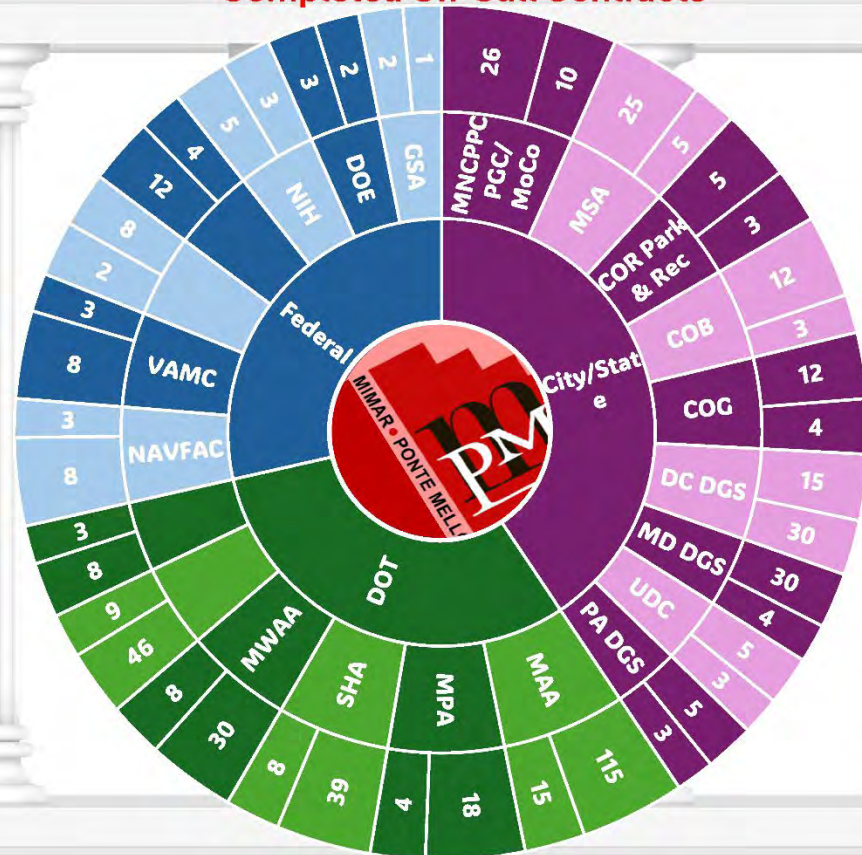
85% On-Call Contracts is our main **FOCUS**



What sets us Apart

Over
2000 tasks/projects
successfully
completed through
over **five dozen**
On-Call/ Task Order
Contracts

Completed On-Call Contracts



Mimar Architects & Engineers, Inc.

Federal DoD, non-DoD, City/State/ Local, Municipal, Healthcare, Aviation, Transit/ Transportation, Residential, & Civic



Mimar McKissick

Programming planning, & design of K-12 and Higher Education facilities. Over \$2 billion in schools constructed with over 300 schools designed. **Exp. with PENNDOT, PA DGS, and State Correctional Systems.**



Mimar JMMurphy

MBE, VOSB, and African American-owned firm. A/E design for the VA Medical Center. Experience in construction management and inspections



Mimar PonteMellor of NY

Certified with the SCA, providing full architecture and engineering design services to City/ State, federal, transit & K-12 facilities located in and around New York and New Jersey.



Mimar PonteMellor of DC

CBE-certified firm, providing full architecture and engineering design services to city/state and federal agencies, K-12, & universities located in the DC Metropolitan area.



Mimar/ Avcon JV

40+ years of exp. in full-service Aviation planning, programming, and design for both landside and airside, including federal grant requests, and wayfinding



SUMMER CONSULTANTS INCORPORATED

Tackling Complexity with Efficiency

- Mechanical Engineering
- Electrical Engineering
- Plumbing Engineering
- Fire Protection Engineering
- Commissioning
- Architecture
- Interior Design

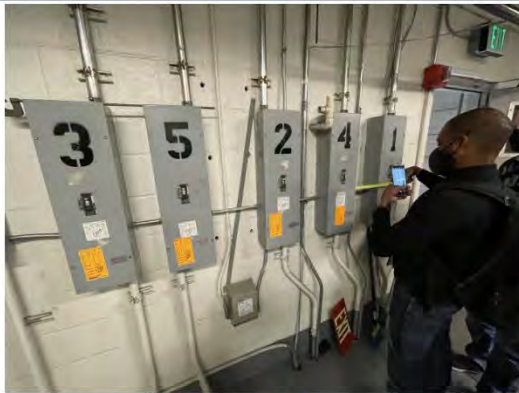
SUMMER CONSULTANTS, INC.

- Founded in 1963
- Mechanical, Electrical, Plumbing & Fire Protection Engineering
 - Additional Services Include Communications Engineering & Commissioning
- **Architecture & Interior Design**
- Small Business
- 5 Offices
 - McLean, VA (HQ)
 - Greenbelt, MD
 - Newark, DE
 - Raleigh, NC
 - Virginia Beach, VA



SUMMER
CONSULTANTS
INCORPORATED

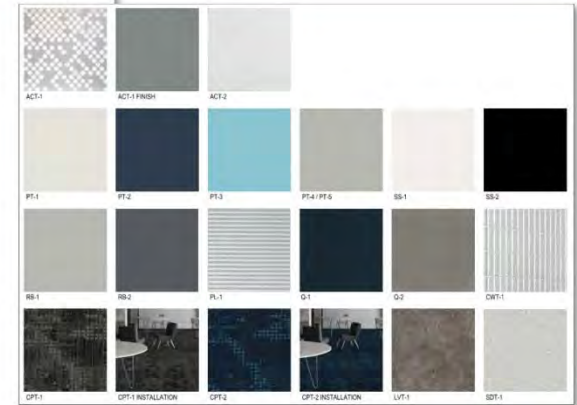
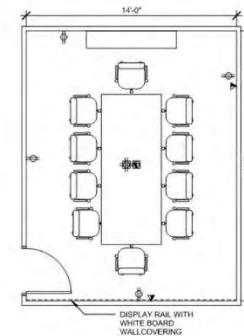
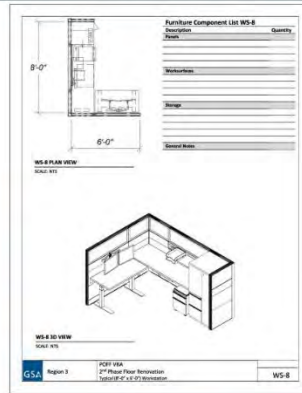
SUMMER CONSULTANTS, INC.



- 75 Engineers/Architects/Support Staff & Growing
 - 37 Mechanical (20 Licensed)
 - 18 Electrical (11 Licensed, 2 RCDD)
 - 10 Fire Protection (7 Licensed)
 - **4 Architects (2 Licensed)**
 - **1 NCIDQ Certified Interior Designer**
 - 3 Certified in Plumbing Design (CPD)
 - 7 Certified Commissioning Authorities (CxA)
 - 8 LEED AP
 - Several Staff Licensed in Multiple Disciplines

SUMMER
CONSULTANTS
INCORPORATED

ARCHITECTURE & INTERIOR DESIGN

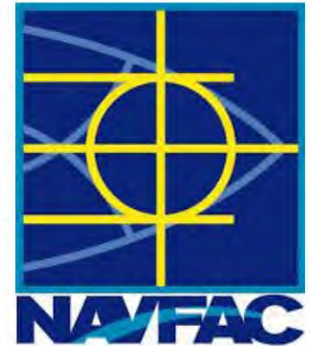


Project	Drawn	Scale
VETERANS BENEFITS ADMINISTRATION	SSD MEDIUM CONFERENCE RM (CONF3)	1/8" = 1'-0"
	250 SF	Date: 02/20/16
		Sheet: 05/01/16



WHAT WE DO

- Renovation Specialization
 - 90% of Our Work is for Federal Government & DoD
 - Additional Markets: Municipal Government, Higher Education, Laboratory & Historic Facilities
- Representative Clients
 - General Services Administration
 - Department of Defense (Navy, Army, Air Force)
 - National Institute of Standards and Technology
 - National Institutes of Health
 - U.S. Department of Agriculture
 - National Parks Service
 - Northern Virginia Community College
 - Fairfax County, VA
- We Have Completed Thousands of Projects in the Mid-Atlantic Region



**US Army Corps
of Engineers®**

NIST
**National Institute of
Standards and Technology**
U.S. Department of Commerce



SUMMER
CONSULTANTS
INCORPORATED

WWW.SUMMERCONSULTANTS.COM



SUMMER
CONSULTANTS
INCORPORATED

Heather Casey, AIA, NCIDQ, CDT

Senior Architect & Interior Designer

(571) 341-4232

casey@summerconsultants.com





A **JS** GLOBAL COMPANY



Supporting Missions Around the Globe

Extensive Experience

JS Global and Atlantic Design Group have 25 years of combined expertise in secure construction and engineering.

Project Portfolio

We have completed over 2,000 projects, including 200+ SCIF assignments, securing a total of 18 million square feet across 32 locations.

Skilled Workforce

Our team consist of over 100+ professionals, including cleared architects, engineers, project managers, and trades personnel.

Commitment to Quality

We maintain a strong focus on safety, quality, and compliance, which helps us to builds trust with federal and commercial clients.





Expertise in Secure Project Delivery

JS Global and Atlantic Design Group have nearly fifty years combined experience managing secure and compliant infrastructure projects worldwide.

About US

JS Global is full-service general contractor specializing in the construction, renovation, and alterations of secure, mission-critical facilities. We apply a client-first approach to all government and commercial projects.

Collaborative Strategic Partnership

The partnership leverages innovation and professionalism to strengthen global security infrastructure through effective project execution.



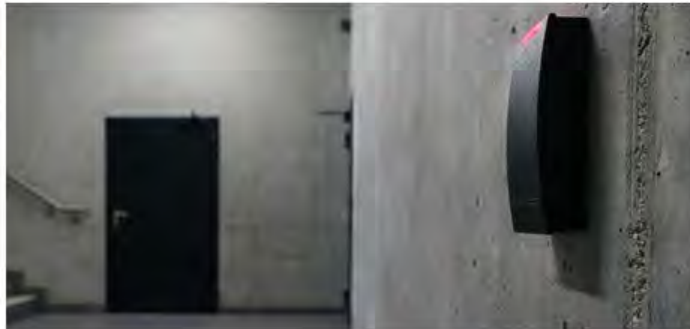
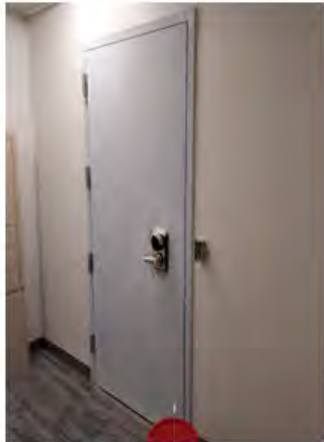
A JS GLOBAL COMPANY

Supporting Missions Around the Globe



A JS GLOBAL COMPANY

Supporting Missions Around the Globe



Secure Construction Solutions

JS Global specializes in construction secure, mission-critical facilities that safeguard sensitive information.

ICD-705 and TEMPEST Compliance

The company ensures that these facilities adhere to strict ICD-705 and TEMPEST standards for electromagnetic security.

Accreditation and Operational Readiness

JS Global assist clients in achieving full accreditation and ensuring operational security readiness.

Safety, Quality, and Confidentiality

The company upholds the highest standards of safety, quality, and confidentiality in delivering projects.



Multidisciplinary Capabilities:

Mechanical, electrical, plumbing, RF shielding, and structural engineering.

Commitment to Confidentiality:

Strict adherence to security and compliance standards.

Rapid Deployment:

Mobilization for time-sensitive missions worldwide.

Fully integrated project solutions:

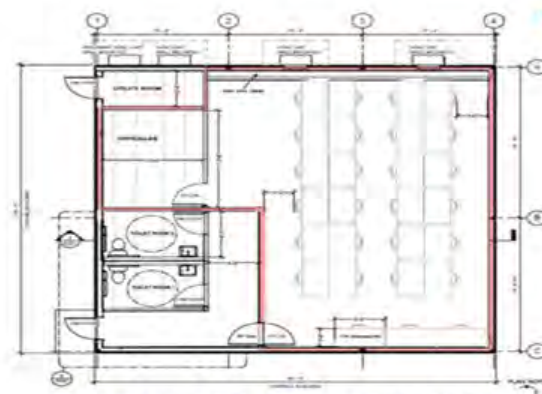
JSG integrates Design-Build, Architecture, Engineering, and Project & Construction Management, streamlining every phase from concept to completion.

Over 100+ Cleared Professionals:

Including Architects, engineers, project managers, and trades personnel.

Security-Cleared Expertise:

Eligibility for SCI and federal clearance requirements



**MODULAR SWING SPACE
OPTIONS AVAILABLE**



Supporting Missions Around the Globe

Safe and Cleared Workforce

JS Global employs a skilled workforce of cleared personnel to effectively manage sensitive and secure projects.

Innovative, Tailored Solutions

Their innovative approach ensures that projects address unique client requirements, including TEMPEST upgrades, security concerns, and co-utilization challenges.



Comprehensive Technical Expertise

JS Global provides expertise in various fields, including mechanical, electrical, plumbing, fire protection, RF shielding, CBRNE, structural, civil, and historical architecture.

Expertise in Diverse Environments

The company successfully executes projects in occupied, historical, and mission-critical facilities, adapting seamlessly to changing priorities.





Supporting Missions Around the Globe

Safe and Cleared Workforce:

JS Global ensures a safe workforce comprised of cleared personnel who effectively manage sensitive and secure projects.

Expertise in Diverse Environments:

The company executes projects in occupied, historical, and mission-critical facilities, seamlessly adapting to changing priorities.

Comprehensive Technical Expertise:

JS Global provides expertise in various fields, including mechanical, electrical, plumbing, fire protection, RF shielding, CBRNE, structural, civil, and historical architecture.

Innovative, Tailored Solutions:

Their innovative approach guarantees that projects meet the unique needs of clients, addressing requirements such as DCID 6/9 upgrades, security concerns, and co-utilization challenges.





Supporting Missions Around the Globe

ICD 705 COMPLIANCE CHECKLIST

1. Planning and Documentation

Obtain necessary approvals, complete checklists, submit construction plans, and conduct TEMPEST assessments to ensure electromagnetic security.

2. Physical Security Measures

Establish secure perimeters using approved materials and implement effective intrusion detection and access control systems.

3. Technical Security

Install TEMPEST shielding, secure communication channels, and ensure that information systems comply with cybersecurity standards.

4. Personnel and Access Control

Verify SCI (Sensitive Compartmented Information) eligibility, enforce visitor control measures, and implement escort policies for non-cleared personnel accessing the SCIF (Sensitive Compartmented Information Facility).

5. Operational Security and Accreditation Document emergency procedures, train SCIF users, conduct regular inspections, and complete the final accreditation process.





Supporting Missions Around the Globe

(SCIF) SENSITIVE COMPARTMENTED INFORMATION FACILITY ZONES

COMPLIANT SCIF ZONES	DESCRIPTION
Entry Control Point	Where secured access areas are located begins
Security Screening	Where Personnel and devices can be checked
TEMPEST Zone	When Protected against electronic surveillance
Acoustic Shielding	What Prevents sound leakage
Compartmentalized Workspace	Where designated Controlled access work areas are located



Supporting Missions Around the Globe

ICD-705/TEMPEST COMPLIANCE



Updated Security Standards

The ODNI memo highlights increased threats requiring updated ICD-705 and TEMPEST compliance for sensitive facilities.



JS Global Compliance Support

JS Global provides risk assessments, POAMs, and reporting to help clients meet the December 31, 2025, deadline.



Risks of Non-Compliance

Failure to comply risks operational disruptions and security vulnerabilities threatening mission success.



Supporting Missions Around the Globe

3-PHASE SUPPORT MODEL

Phase 1: Assessment and Planning

In Phase 1, we survey facility conditions, perform risk assessments, and develop Plans of Action and Milestones (POAMs). Early engagement with the Authorizing Official (AO) is crucial for the success of the project.

Phase 2: Design and Programming

Phase 2 focuses on creating concept designs, establishing budgets, scheduling, and developing construction security plans.

Phase 3: Construction and Delivery

Phase 3 involves the construction delivery process, which includes project management, site safety, quality control, and accreditation testing.





A **JS GLOBAL** COMPANY

Supporting Missions Around the Globe

OUR DEDICATED STANDARDS



Diverse Engineering Disciplines

JS Global's experts cover mechanical, electrical, plumbing, fire protection, structural, civil, and historical architecture disciplines.



Compliance with Key Standards

The team adheres to critical standards like ICD-705, TEMPEST, UFC 4-010-05, DoDM 5105.21, and NSA 94-106 ensuring secure solutions.



Specialized Security Solutions

Expertise in RF shielding, radio frequency mitigation, sound transmission classes, and electronic access control systems is provided.



Supporting Missions Around the Globe

OUR COMPETITIVE EDGE



Expertise and Rapid Deployment

JS Global's cleared designers and constructors enable fast personnel deployment for time-sensitive projects, ensuring efficiency.



Innovative Solutions and Modular Options

The company offers document safeguarding and modular swing space options to address co-utilization and security challenges.



Critical Infrastructure Excellence

JS Global excels in managing redundant data, Red/Black networks, mechanical and CBRNE systems, backup power, and uninterrupted supplies.



Supporting Missions Around the Globe

PAST PERFORMANCE

Federal Client Portfolio

JS Global works with a diverse array of federal clients, including intelligence agencies, military branches, and government organizations.

Commercial Client Partnerships

We are trusted by prominent commercial clients for crucial infrastructure projects within the aerospace and research sectors.

Expertise in Complex Environments

Our team has extensive experience managing projects in occupied spaces, active environments, and historic buildings that require careful logistical planning.



Supporting Missions Around the Globe

LET'S BUILD SECURE TOGETHER

ICD-705 Compliance Support

JS Global assists clients in achieving full ICD-705 compliance, ensuring operational readiness and adherence to security standards.

Experienced Dedicated Team

Our committed and skilled team employs proven methodologies to deliver secure and accredited solutions on time.

Global Mission Readiness

JS Global supports global missions with integrity, expertise, and innovation, ensuring that critical deadlines are met.





KCCT

Architecture | Planning | Interiors

Capabilities Overview

SAME NoVA B2B

December 11, 2025

www.kcct.com

UEI: E9RBV7HCBCW5

Overview

40+ years as a trusted mission partner to the federal government



75+ IDIQs for the US federal government since 1983



Established security infrastructure that allows for swift mobilization



60 full-time architects, interior designers, planners, specifications writers, security administrators, and corporate support staff



800+ federal projects completed



A light gray world map with white outlines of continents and countries. Numerous small red squares are scattered across the map, representing project locations. There is a high concentration of dots in North America, Europe, and East Asia, with more sparse distributions in South America, Africa, and Australia.

227

Global Cities in KCCT's
Portfolio

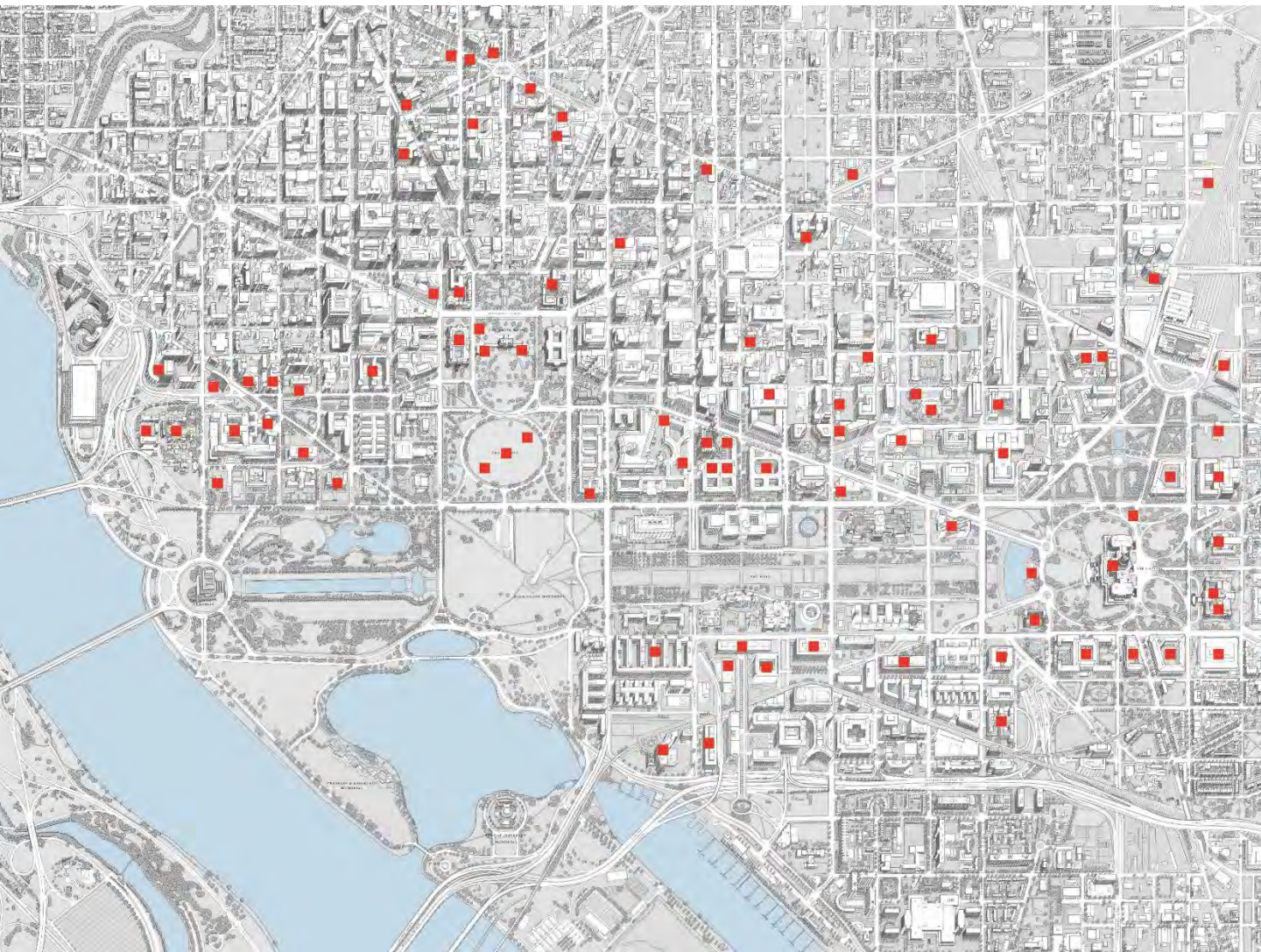
4.1M

Square Feet of Classified
Space Designed Around
the World

4.6M

Square Feet of Projects
Designed to LEED Silver
Certification or Above

KCCT



500

Projects in Monumental
Buildings Throughout the
Monumental Core of the
District of Columbia

KCCT is a Certified
Business Enterprise (CBE)
in Washington, DC
(LBE, DZE, LRB)

KCCT

Primary Typologies

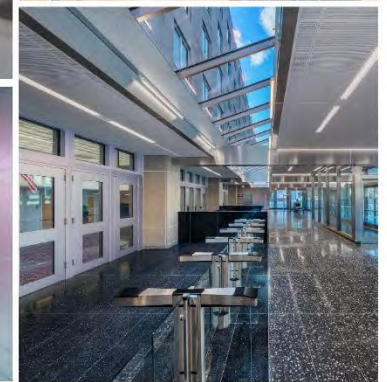


▲ Embassies

▼ Training and education facilities



▼ Operations centers



▲ Offices



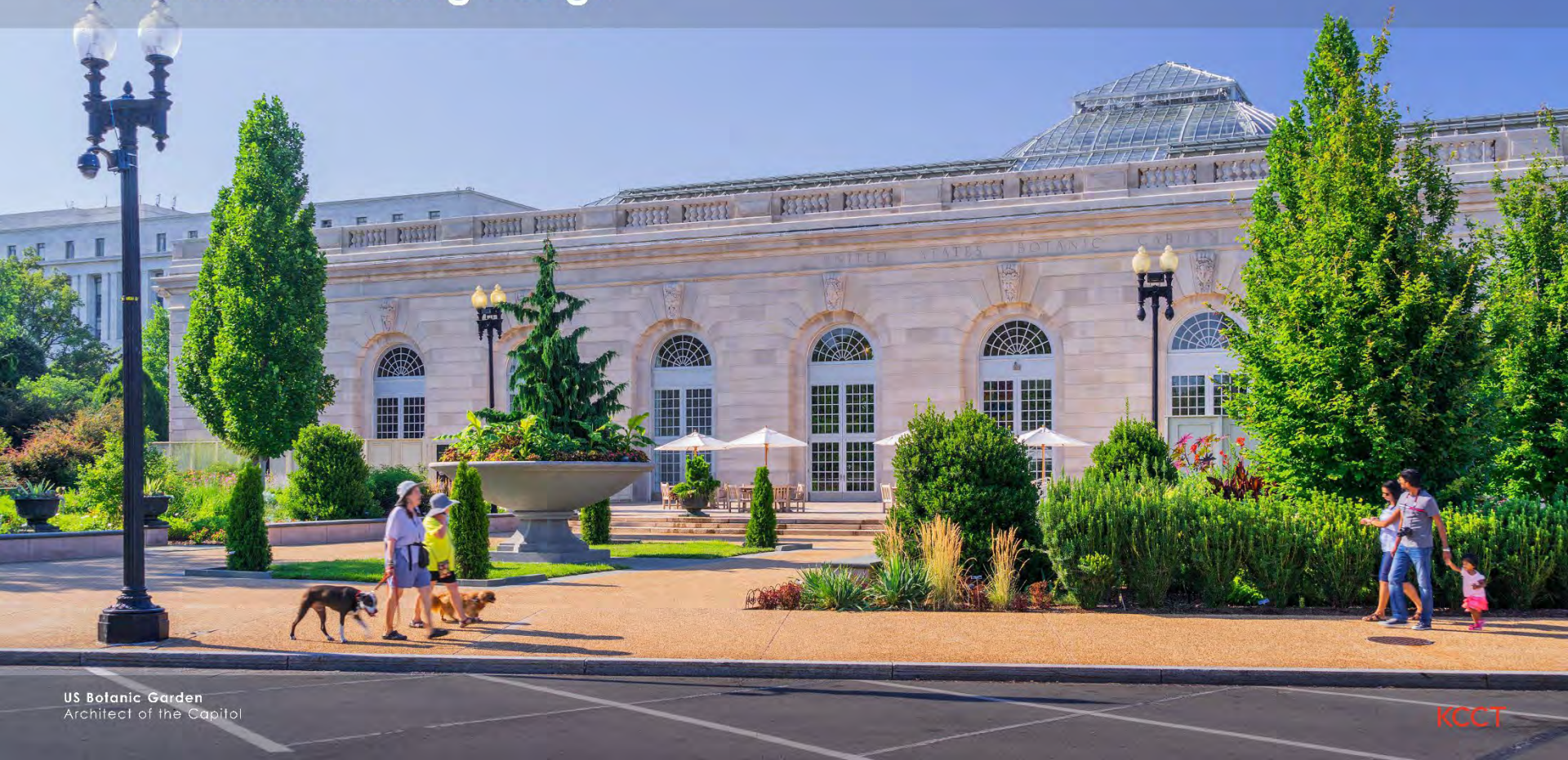
▲ Security / access control

Security Design

The Pentagon
Washington Headquarters Services

KCCT

Monumental Building Design



US Botanic Garden
Architect of the Capitol

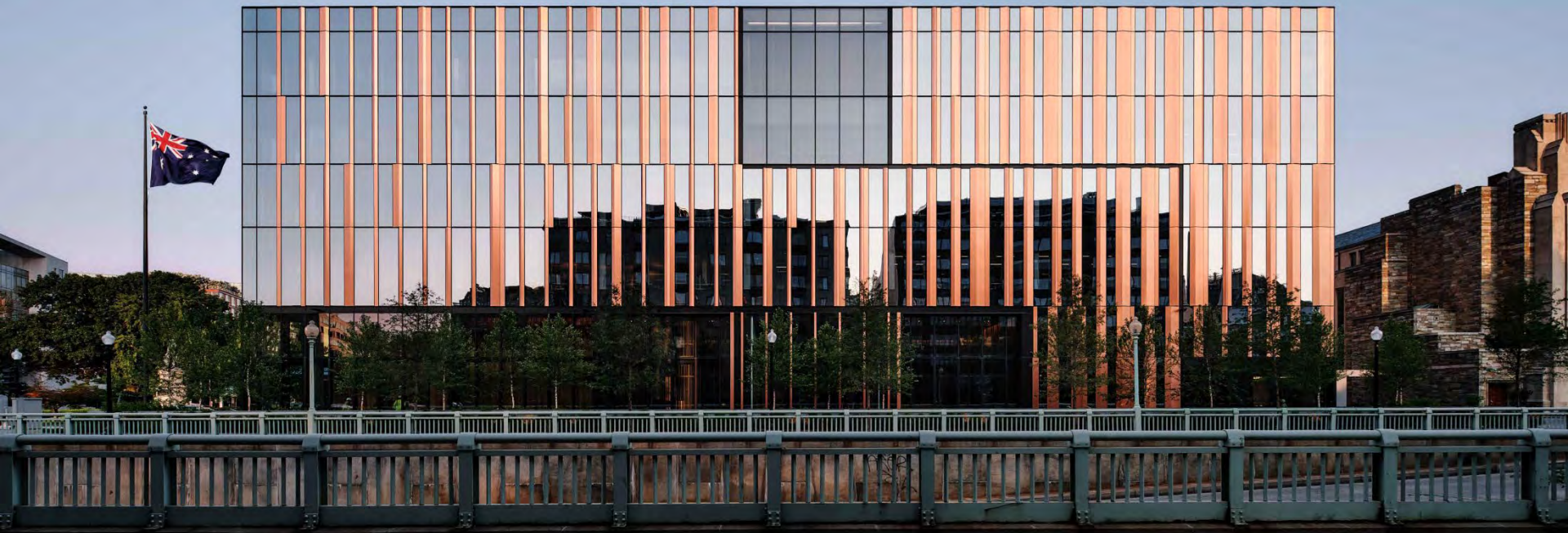
KCCT

Phased Renovation Design

Harry S Truman Building
Department of State

KCCT

Award-Winning Design



Embassy of Australia
Australian Department of Foreign Affairs and Trade

KCCT



Full Campus Design

US Consulate, Monterrey, Mexico
Department of State

KCCT

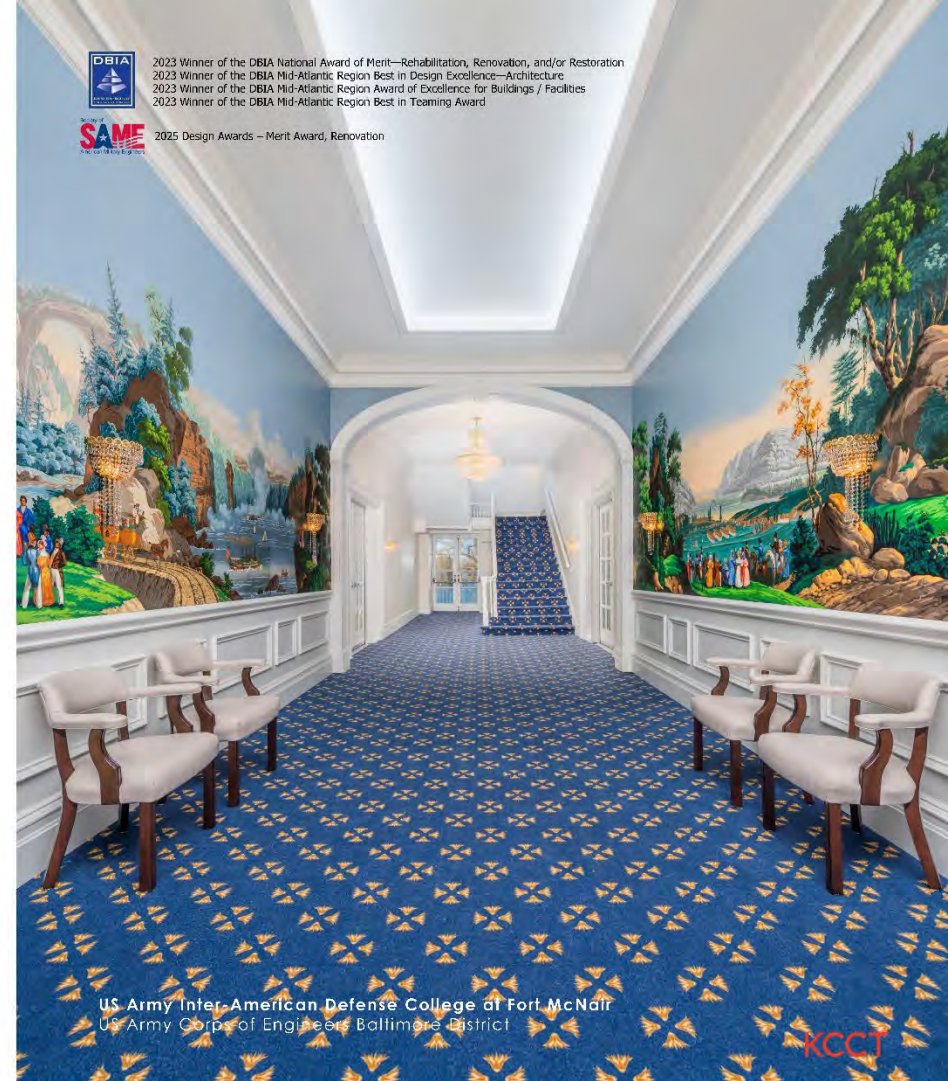
Secure Tenant Fit-Out Design

Department of State Operations Center
Department of State

KCT

Agency Partners

- US Department of State
- US Army Corps of Engineers
- Naval Facilities Engineering Systems Command
- Architect of the Capitol
- General Services Administration
- Federal Bureau of Investigation
- Federal Emergency Management Agency
- Washington Headquarters Services
- Defense Intelligence Agency
- US Secret Service
- Intelligence Community



Contact

Bree Beal, MBA, CAP,CFAPMP, LSSYB, LEED AP, WELL AP
Director of Business Development
E: bbeal@kcct.com
T: (970) 819-0632

KCCT



SPECIAL THANKS TO THE SAME NOVA POST'S 10TH ANNUAL BUSINESS-TO-BUSINESS (B2B) ENGAGEMENT SPONSORS

