



SAME NoVA Post 10th Annual Business-to-Business (B2B) Engagement

National Museum of the U.S. Army at Fort Belvoir
December 11, 2025





SPECIAL THANKS TO THE SAME NOVA POST'S 10TH ANNUAL BUSINESS-TO-BUSINESS (B2B) ENGAGEMENT SPONSORS



The logo for POND is displayed in a large, white, bold, sans-serif font. The letters 'P', 'O', 'N', and 'D' are connected. A small red square is positioned at the base of the letter 'D'. The logo is set against a dark blue background that occupies the top half of the slide.

POND

Introduction and Capabilities



Who We Are: A full-service A-E consulting firm to both public and private clients across the U.S. and internationally.

What We Do:

- **Core Services:** Integrated engineering, architecture, planning, construction and program management solutions
- **Specialty Services:** Fuels, Power Delivery, Process Engineering, Aviation, Transportation, Landscape Architecture, Operational Technology, and Life Sciences & Bio Safety

Our Reach & Culture

- **870+ professionals** serving clients across **50 states** and in **29 countries**
 - Rapid, organic growth from ~500 employees in 2021
- **Markets Served:**
 - 1,500+ Active Clients
 - Government (Army, Navy, Air Force, National Guard, BIA, FAA, FBI, FBOB, BIA, GSA)
 - Energy, Transportation, Industrial, Life Sciences



Experience Spotlight



Pacific Air Forces, FSRM Execution Initiative, Nine OCONUS Installations

- Responsive, Flexible Planning and Design Support
- \$42.6M Program Across 9 PACAF Bases and GSUs
- 169 Deliverables, including Planning, PCRs, and Design Refreshes
- Supported PACAF's "Fight Tonight" priorities & Installation Resilience



FBI South Campus Academic Zone, Redstone Arsenal, AL

- Initial Planning and DB Requirements
- 908,537 GSF, \$700M
- Classrooms, Labs, Workshops, Admin, Support Spaces
- Greenfield Site
- Currently Performing Oversight of DB Contract



B-21 Beddown Program, Ellsworth AFB, SD; Dyess AFB, TX; Whiteman AFB, MO

- Planning and DBB Design
- Projects include:
 - Fuel Cell Hangars
 - Weapons Release Systems Shop
 - Environmental Protection Shelters
 - Squad Ops/AMU
 - Flight Simulator
 - Refueler Yard + Fuels Lab



US Naval Academy, Bancroft Hall Recapitalization, Annapolis, MD

- Facility Condition Assessment
- Planning / Phased DBB Design
- 1.9 Million SF, Five-Story, Historic Housing Facilities
- \$1.5B Program
- 4,600 Midshipmen and 1,000 Support Staff
- Interior / Exterior Renovation
- Swing Space and Temporary Contractor Offices, Parking

Client Account Managers



Steve Hendricks
Civilian Agencies



Benjamin Lawless, PE
Civilian Agencies



Dave Caldwell
Army



Gary Bonham
Army



Gary Dorman, PMP
Air Force



Craig Rezac, Assoc. AIA
National Guard



Rich Hayes
Navy



Fox Rothschild LLP
ATTORNEYS AT LAW

Fox Rothschild LLP

Washington, DC

**SAME Annual Business-to-Business
(B2B) Engagement**



Doug Hibshman

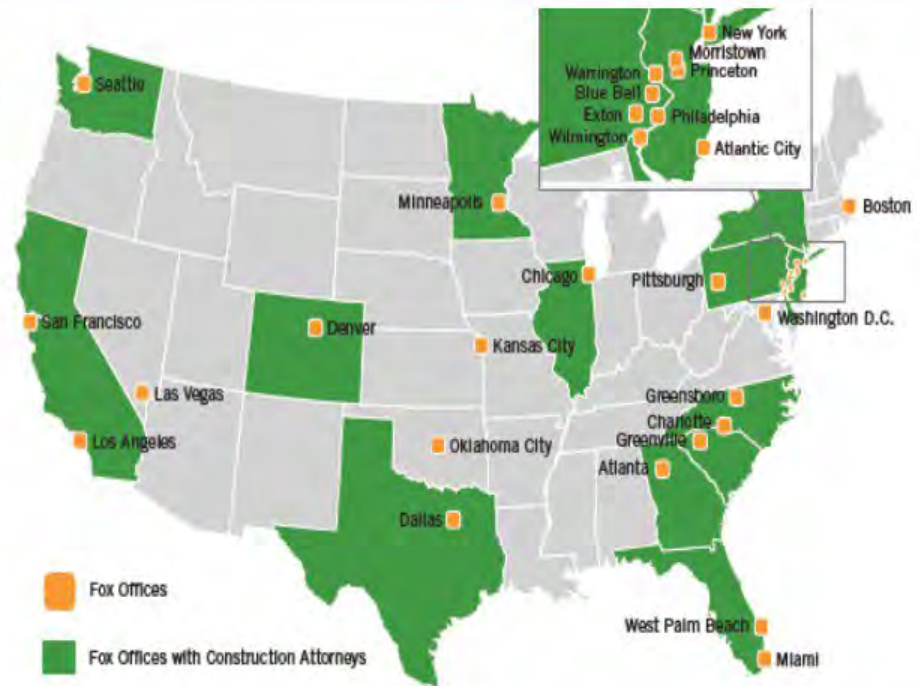


Dana Molinari



Who are we / Where are we / Why are we here

- **Who are we:**
 - Fox Rothschild LLP – **WE ARE A LAW FIRM !!**
 - General practice law firm, 1,000 attorneys
 - 70+ practice groups
 - AM Law 100
- **Where are we:** 30 offices / all major markets
- **Why are we here:** Key practice groups – Clients
 - Federal Procurement
 - Construction
 - AE Contracts
 - Labor and Employment
 - Manufacturing, Intellectual Property
 - Corporate, M&A
 - Privacy & Data Security
 - Real Estate & Zoning



Fox Rothschild LLP
ATTORNEYS AT LAW



What we don't do



Fox Rothschild LLP
ATTORNEYS AT LAW



What we do do

- **GIVE FREE ADVICE / PHILLY RATES IN DC / HANG OUT AT SAME**
- **Clients Represented**
 - Represent small, medium, and large businesses
 - Contractors, subcontractors, AE firms, manufacturers, suppliers, owners, service providers, sureties, private equity
- **Services Provided**
 - Contract, subcontract, JV, etc. drafting, review, risk assessment
 - Contract claims / Bid Protests
 - Litigation, mediation, arbitration
 - Compliance
 - FAR / DFARS compliance, internal investigations, Code of Business compliance training, Buy American, SCA, Davis-Bacon, etc., etc.
- **What we can do for you**
 - Sign good contracts
 - Avoid litigation
 - Get paid for your work



Fox Rothschild LLP
ATTORNEYS AT LAW

Points of Contact



Doug Hibshman, Partner
202.461.3113
dhbshman@foxrothschild.com



Dana Molinari, Associate
202.794.1240
dmolinari@foxrothschild.com





A Service-Disabled Veteran-Owned Small Business

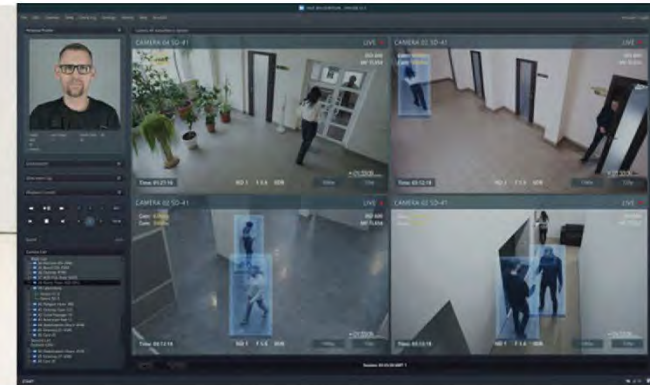


Dominic Mason, PSP
Associate Principal

Solving Complex Security Problems

Services

- Anti-terrorism/Force Protection (ATFP)
- Access Control Points (Gates & Barriers)
- Ballistic Protection
- Electronic Security (Cameras & Card Readers)
- Forced Entry
- Master Planning
- Standards Development
- Risk Assessments
- Regulation Compliance (UFC, ISC, VA)



Federal



Cultural Property



Military

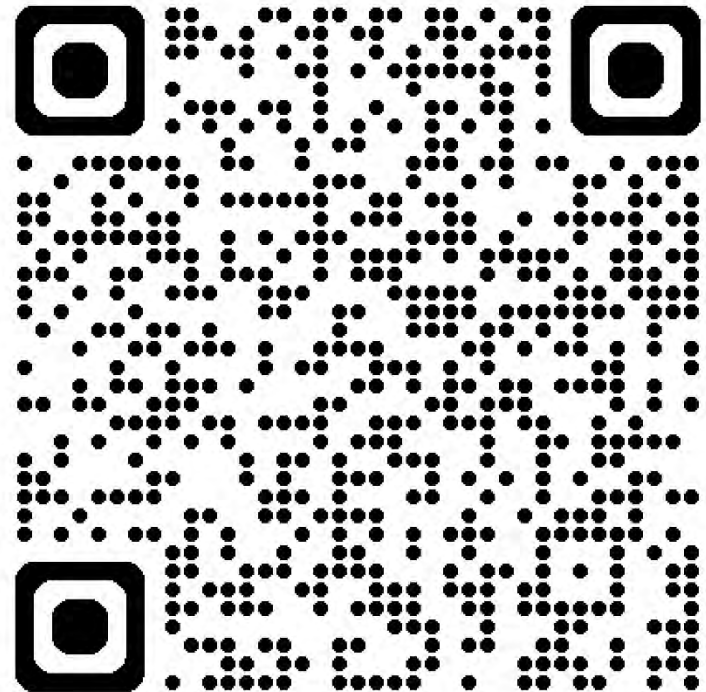




Dominic Mason
703.987.5186

Dominic.Mason@TrinityCD-Inc.com

**Let's build a safer, more
resilient future together.**



trinitycd-inc.com



SAME NOVA Post Business-to-Business (B2B) Event

**December 11 2025
Jilian Breeden, P.E., LEED AP**

Engage Federal LLC

Economically-Disadvantaged Woman-Owned Small Business (EDWOSB)

www.engagefederal.com

Reston, VA

UEI: FKJFBTZEBXB7 | CAGE: 89G82





Specialty subconsultant for planning & programming:

- Military Construction (MILCON) DD Form 1391s in PAX DD1391 Processor
- SRM 1391s (Navy Special Projects & DASN Packages; Army M&R 1391s)
- Charrette facilitation
- Economic analyses in ECONPACK
- Scope & requirements development (BFR, RA, CAW)
- Budgetary/programming cost estimates
- Concept & feasibility studies
- Plans & studies



WHAT: Experience preparing 255+ 1391 packages

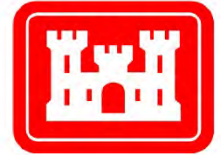


Engage serves:

- 33 Prime firms (A/E & Planning Firms)
- 13 Federal agencies
- 11 USACE Districts
- 7 Navy Commands (NAVFAC, NAVAIR, NAVSEA)

Past Performance:

- 90% “Exceptional” PPQs
- 80% Repeat Clients



WHO: Serves 33 primes & 13 federal agencies

Project Locations:

CONUS

OCONUS

- Hawaii
- Belgium
- Germany
- Japan
- Netherlands

DC/MD/VA

- Fort McNair
- Naval Research Lab (NRL)
- Washington Navy Yard (WNY)
- Joint Base Anacostia-Bolling (JBAB)
- Aberdeen Proving Ground (APG)
- Fort Detrick
- Naval Air Station (NAS) Patuxent River
- Naval Support Facility (NSF) Indian Head
- Joint Base Langley-Eustis (JBLE)
- Naval Station Norfolk
- NAVSUPACT Hampton Roads

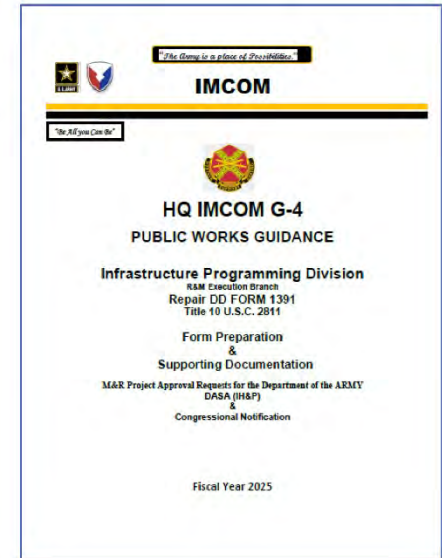


WHERE: Local expertise with global reach



Include Engage to:

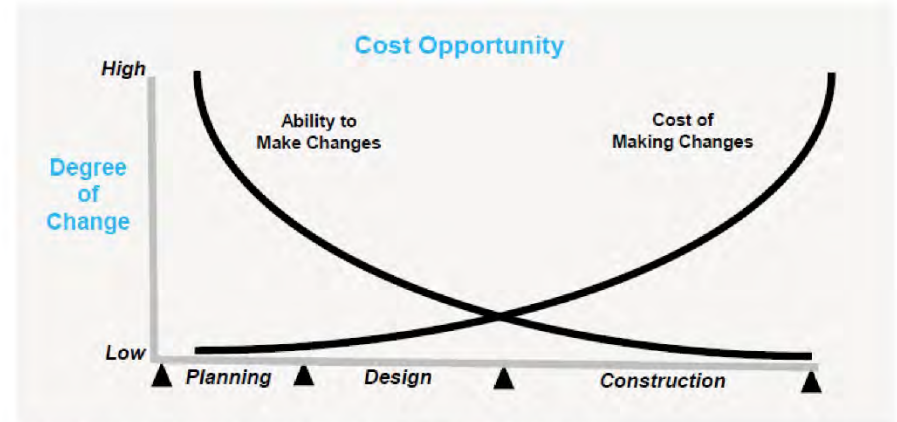
- Leverage a subject matter expert (SME)
- Add bench strength
- Improve project executability
- Perform detailed crosschecks & improve quality
- Serve as a distinguisher
- Ensure your subs are “CMMC ready” (Level 2 self certified)
- Understand changing requirements:
 - Cost thresholds
 - Guidance updates
 - Trends
 - Software/systems



WHY: Proper planning improves quality & project executability

Include Engage when you see these terms:

- DD Form 1391, 1391, MILCON, M&R, Special Project, DASN
- Planning; programming; master planning
- Plans; studies
- Charrette
- Requirements development (BFR, RA, CAW)
- PAX DD1391 Processor
- Alternatives analysis; economic analysis; ECONPACK



Source: Systems Approach to Cost Management Webinar; Faithful Gould

WHEN: You need the benefits of a planning/programming SME



**SAME NOVA Post
Business-to-Business (B2B)
Event**

December 11 2025

**Jilian Breeden, P.E., LEED AP
jbreeden@engagefederal.com
703.638.8684
www.engagefederal.com**



CCI PRIME CONTRACTORS, LLC

The **CHOICE** *for* **SUCCESS**



About CCI Prime Contractors, LLC



- Small, disadvantaged, 8(a) firm
- Subsidiary of Bristol Bay Construction Holdings LLC (BBCH), a holding company of Bristol Bay Native Corporation (BBNC)
- BBNC is an Alaska Native Corporation – incorporated in 1972 through the Alaska Native Claims Settlement Act of 1971 – with operations in construction, industrial services, government services, tourism, seafood, and in-region investments
- Safety Rating: EMR – 0.74
- Primary NAICS Code: 236210 – Industrial Building Construction

Office Locations

Anchorage, AK

Niceville, FL

Manchester, ME

What Matters to Us

Enriching the Native Way of Life

A portion of BBCH subsidiaries' profits are used to build a sustainable future for **over 11,000 shareholders** and their descendants. With our support, BBNC provides benefits to the Alutiiq, Dena'ina, and Yup'ik people of the Bristol Bay region in the form of:



Dividends



Education & Training



Jobs & Small Business Start-Up Support



Development & Protection of Resources



Promotion of Cultural Initiatives



Investments Back into the Region



For more information about BBNC, visit bbnc.net.

Services



- New Construction and Sustainment, Restoration, and Modernization
- Demolition
- Structural Systems
- Building Envelope
- Architectural Features
- Building Infrastructure Systems
- Energy Infrastructure
- Exterior and Interior Repairs and Modifications
- Specialty Trades Self-Performance (Mechanical, Electrical, Plumbing, HVAC, Restoration) in Select Regions

**Design-Build and
Design-Bid-Build**



Project Experience



North Helix House Steel Preservation

NAVFAC Mid-Atlantic | Cutler, ME | \$5M

- Erected scaffolding and shrink wrap enclosure
- Removed existing paint with media blast
- Repaired the existing structural steel beams, columns, and connections
- Installed a new three coat paint system
- Repaired the existing styrene butadiene styrene (SBS) and ethylene propylene diene monomer (EPDM) roofing systems; and
- Repaired miscellaneous existing electrical conduits



Project Experience



- General Construction and Repair/Renovation IDIQ, NAVFAC Mid-Atlantic, NAS Oceana, VA (\$4.5M)
- Industrial Building Construction IDIQ, NAVFAC Mid-Atlantic, Portsmouth Naval Shipyard, Kittery, ME (\$10M)
- D-B-B Sliding Gates, DFAS, NAVFAC Mid-Atlantic, Portsmouth Naval Shipyard, Kittery, ME (\$2.1M)
- Park Loop Road Culvert Rehabilitation, National Park Service, Acadia National Park, ME (\$867K)
- D-B Building 3921 Classroom Renovations, NAVFAC Southeast, NAS Pensacola, FL (\$1.7M)
- Construction IDIQ For D-B and D-B-B Projects, NAVFAC Southeast, NAS Key West, FL (\$4.5M)



Additional Services Offered by BBCH Companies

BBCH's best value companies provide federal and commercial clients with superior quality and strategic, innovative, and sustainable solutions through our diverse service offerings.

Construction

New construction and sustainment, restoration, and modernization

Civil Works

Civil construction and site infrastructure

Environmental Services

Environmental investigation, remediation, restoration, compliance, NEPA, and natural/cultural resource services

Professional Services

Staffing services to augment federal government agency divisions at the installation and regional level

Restoration

Hydrodemolition and innovative restoration and structural integrity solutions

Fuels Systems

Construction, maintenance, repair, and coatings for fuel storage and distribution systems

Facility Support Services

Broad range of services to support facility needs

Self-performance capabilities electrical, mechanical, civil, fuels, environmental, and restoration services

Bonding Capacity:
\$100M per project, \$750M aggregate

High client retention and long-standing trade partner relationships

Majority of CPARS "Exceptional" or "Very Good"



Confidential and Sensitive Information



Thank You!

Evan Barman, PE, PMP
Business Development Director
(978) 809-8611
ebarman@bbch-llc.com

Who is **GoldenWolf** ?



- A Certified SDVOSB, WOSB, ISO 9001:2015
- Trusted federal advisors delivering comprehensive facility and construction solutions that drive performance and maximize portfolio value.
- Core Competencies: Facility Portfolio Management, Facility Condition Assessments, Construction Management Services, BIM/LiDAR Services
- Clients: GSA, NOAA, VA, DHA, and Multiple USACE Districts

EXPERIENCED LEADERSHIP PROVIDING TAILORED TECHNOLOGY-FORWARD SOLUTIONS

A Trusted Partner in Achieving Excellence in Real Estate Portfolio Management



WHAT GOLDENWOLF DOES

Contact Information

**Sabrina Wolfersberger**

President

M: 240.672.7995

E: sabrina@goldenwolf.com

Ryan Bredahl

Partner | CEO

M: [\(301\) 789-7867](tel:(301)789-7867)

E: ryan@goldenwolf.com

Kris Stoddard

Chief of Operations

M: 843.998.9567

E: kstoddard@goldenwolf.com

Steve Bertolaccini

Chief of Business Development

M: 443-624-0486

E: Steve@goldenwolf.com

W: <https://www.goldenwolf.com> P: (844) 860-WOLF

EXPERIENCED LEADERSHIP PROVIDING TAILORED TECHNOLOGY-FORWARD SOLUTIONS



JMT FEDERAL CAPABILITIES



JMT Today

100% employee-owned

Multi-discipline AE firm

2024 revenue \$500M+

Federal Clients

- Civilian Agencies
- *Intelligence Community*
- *Department of Defense*

#50 (ENR)

Top 500 Design Firms



2,800 +

Employee
Owners



ISO 9001:2015

Certified



Clark Nexsen is a full-service design firm providing architecture, engineering, planning, interior design, and landscape architecture. Our designers have extensive experience in research, healthcare, industrial, educational, commercial, institutional, and public work for local and national clients.



Established in 1920



!0 office locations



92 LEED certified projects



Key Clients NAVFAC
 DHS
 FBI
 USACE



**US JOINT FORCES COMMAND JOINT DEPLOYMENT
& MARITIME OPERATIONS CENTER**
NAVFAC Mid-Atlantic, Norfolk, VA



SYM means “with, together”

SYM Partners combines Straughan’s strength in sustainability, planning & engineering with the full-service engineering, architecture, & environmental services of JMT, nationwide

The SYM partnership was intentionally crafted to serve the needs of the USACE Civil Works mission



20+ year partnership providing environmental & engineering expertise through a WOSB mentor-protégé joint venture (formed in 2022)



Successfully collaborated on **100+** projects



2,800+ employees
83 Environmental Specialists
95 W/WW Engineers
196 Surveyors
58 Civil Engineers



Civil Engineering



GIS & Technology



Ecological Restoration



Construction Management & Inspection



Water Resources Engineering



Environmental Compliance & NEPA



Coastal & Resiliency Planning



Underwater Inspection & Dive Team



www.jmt.com

Jon Ryan, PE, PMP, CCM, LEED AP
Senior Vice President, Federal Programs

D. 410-316-2307

C. 410-746-2398

ryan@jmt.com

**Burdette, Koehler , Murphy &
Associates, Inc.**

bkm

Firm

- Baltimore, MD and Norfolk, VA
- Small Business
- 57 years of design excellence
- 117-person MEP firm
- **42 Professional Engineers**
- 25 LEED/WELL/GGP Accredited Employees
- **55% of work as Prime**
- Federal, Local/State, Higher Ed, K12, Healthcare, Commercial/Housing, Mission Critical, Science & Technology, Utility

bkm



Services

- Mechanical Engineering
- Electrical Engineering
- Plumbing Engineering
- Special Systems (IT/AV/Security)
- Lighting Design
- Sustainable Design
- Commissioning

bkm



Federal Experience

NAICS: 541330; Small Business

UEI: GKK6JE2LNQK5

Current A/E IDIQ Prime Contracts

- EPA Regions 1-4
- Department of Energy HQ Facilities
- USACE Huntsville VAAES
- AFCEC Dormitories

Active Mentor Protege

BKM PRIME AE SB JV, LLC

bkm





Federal Market Overview

Cathy Otis, AIA, NCARB

Vice President, B+P Federal Market Leader

SAME NoVA Post President

December 11 2025

GANNETT FLEMING + TRANSYSTEMS



WHO WE ARE

- GFT is a privately held AEC firm shaping the **Infrastructure of Life**; water, power, transportation, and buildings.
- Our team of 5,500+ experts design, construct, and engineer resilient, creative solutions that uplift communities across North America and beyond



GFT

GFT Markets

GFT is a full-service engineering firm providing tailored solutions across markets and disciplines.



Transportation

- Aviation
- Bridges & Tunnels
- Bus Rapid Transit
- Ports, Harbors & Navigation
- Roadways
- Tolling
- Transit & Rail



Water

- Conveyance, Collection & Transmission
- Dams & Levees
- Stormwater & Drainage
- Water & Wastewater Treatment



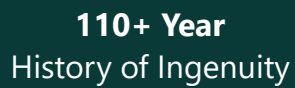
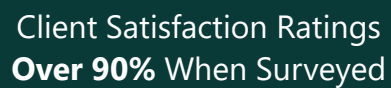
Buildings and Places

- Civic/Justice
- Education (K-12)
- Life Sciences
- Industrial Facilities



Power

- Hydroelectric
- Renewable
- Transmission & Distribution



Ingenuity That Shapes Lives™

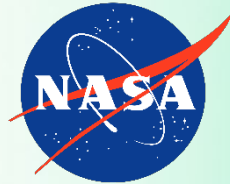
5,500+ Dedicated Professionals

**GFT**

Our Federal Market Clients



**US Army Corps
of Engineers®**



GFT Solutions

Infrastructure & Facilities	Program & Delivery Services	Resiliency & Environmental
<ul style="list-style-type: none">➤ Defense programs➤ Military and civilian facilities➤ Transportation (bridges, highways, transit systems)➤ Water resource development (dams, reservoirs, pipelines)➤ Flood control➤ Power and energy infrastructure➤ Aviation	<ul style="list-style-type: none">➤ Architecture & Engineering design➤ Program & construction management➤ Planning, advisory, feasibility studies, facility assessments➤ Design-build and project delivery support➤ Geospatial analytics and technology➤ Intelligent transportation systems & smart infrastructure	<ul style="list-style-type: none">➤ Security and safety services➤ Resiliency and recovery (disaster preparedness & continuity)➤ Environmental restoration and remediation➤ Sustainability, energy efficiency, and decarbonization strategies➤ Emergency response and risk management

Our Mentor Protégé Partners



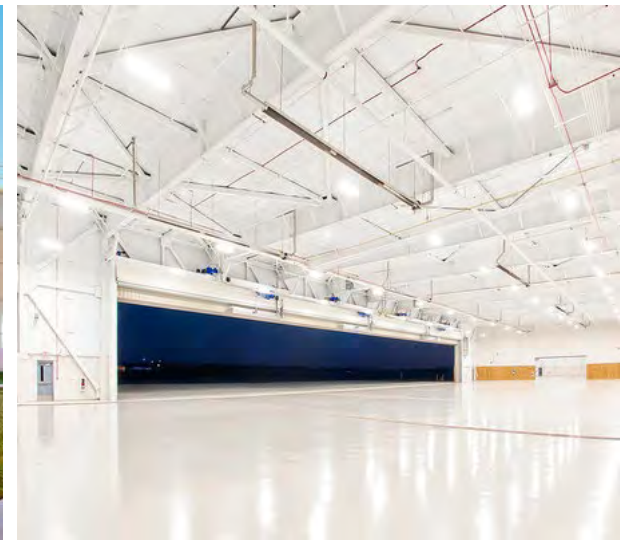
- **Civil and Structural Engineering**
- **Contracts**
 - USACE Honolulu Structural AE IDC
 - USACE Seattle JBLM AE MATOC



- **Civil Engineering and Geotechnical services**

MCAS Cherry Point, NC, D/B P194 Unmanned Aircraft System Facilities Expansion

- Size: 79,885 SF; Construction Cost: \$25.5M
- 71,079 sq. ft. New Aircraft Maintenance Building (Hangar/Warehouse), BLDG #1, 1,600 sq. ft. new Hazardous Storage, BLDG #2, 3,000 sq. ft. new Vehicle Holding, BLDG #3, and conversion of the 4,206 sq. ft. hangar bay in the existing Building #4845 to a Motor Vehicle Work Bay.
- Demolition of the existing Building #3975 and site/civil work, including parking, vehicle access, pedestrian circulation, anti-terrorism, and stormwater management.



FLETC ATF Project Planning and Design, Multiple Facilities, Glynco, GA

- AE Design for the Bureau of Alcohol, Tobacco, Firearms and Explosives (ATF) project will provide additional training capabilities in the ATF site at the Federal Law Enforcement Training Center (FLETC). The project consists of site improvement planning and design of four buildings:
 - Arson Equipment Building
 - Warehouse Building
 - Field House Building
 - Classroom / Armory Building.
- Size: 21.2 acres, 104,120 GSF; Construction Cost: \$42M estimated.



Design Build C-17 Two Bay Hangar

Travis AFB, CA

- Design-build of new 101,700-sq.-ft., two-bay maintenance hangar for C-17 aircraft at Travis Air Force Base. The project consists of 96,700 sq. ft. of maintenance bay and support area, 3,500 sq. ft. of administrative area, and 1,500 sq. ft. of mechanical mezzanine.
- The team proposed sustainable features, such as energy-efficient lighting systems, intensive use of recycled content material, and 99% recycling of construction waste, to achieve LEED Silver certification. GFT completed the design for this \$43 million project on time, and the construction was completed on schedule



United States Secret Service (USSS) | Laurel, MD

New Indoor Firing Range

James J. Rowley Training Center (JJRTC)

- Complete design services for a new training facility to enhance training activities and operational readiness and reduce carbon emissions with advanced electrification technology. D/B RFP and bridging documents. Emergency Power Generation. Size: 114K GSF.



PERSPECTIVE VIEW 02 (AERIAL - ENTRY LOBBY)



PERSPECTIVE VIEW 04 (ENTRY)



MERDON
STRATEGIES

Merdon Strategies, LLC
SAME B2B 2025



Firm Information

Merdon Strategies, LLC

- Founded in 2022
- Headquartered in Alexandria, Virginia
- SBA Certified WOSB & SWAM
- UEI/CAGE Code LU1UL8CJEJS3 / 9FGG6

NAICS Codes

236220

541611

541618

EDUCATION



BS, MS, PhD Candidate
Civil Engineering,
University of Maryland



APPOINTMENTS

2026 National
Board Member,
Ex-Officio



2019 NAC
Inductee

EXPERIENCE

Acting AOC and COO
Architect of the Capitol

COO/CGO
McKissack and McKissack

Project Manager
NAVFAC - White House
NSWC- Indian Head

CEO/Founder



Christine Merdon, P.E., NAC
CEO/Founder

Program & Construction Management

Services

- Stakeholder Management
- Communication Management
- Contract Acquisition Strategy
- Risk Management
- Owner's Advisory Services
- Data Driven Management (KPI's)





Home ▶ News Detail

ARTICLECS - ARTICLE VIEW

NAVFAC WASHINGTON EXPLORES CONSTRUCTION MANAGEMENT AGENT SERVICES TO ENHANCE PROJECT DELIVERY

13 May 2025



New Challenges

- NAVFAC PM/CM
- Large Programs (WRAMC, Bancroft Hall, and NSWC-IH)
- Reductions in Work Force
- “Build Faster, with Lower Cost”
- Other Transaction Authorities (OTA) and Section 233



White House
Military Office



NSWC-Indian Head



DOD Experience





U.S. Capitol Campus
Construction Program
(\$ 250 - 1 Billion/yr)

CEO's PM/CM Experience



O'Hare Airport (ORD)
Modernization
Program (\$6 Billion)



Nationals Ballpark
\$650 Million



District of Columbia
Public School (\$1
Billion)



Smithsonian,
National Museum of
African American
History and Culture
(NMAAHC)

Firm Experience



NASEM “Technical Assessment of the Capital Facility Needs of the National Institute of Standards and Technology,” 2023



“APPA Evaluation of Smithsonian Institution's Design and Construction Organizations” 2024



THANK YOU!



Contact Information:
Christine Merdon, P.E., NAC
christine@merdonstragies.com
703-593-1719
Website: merdonstrategies.com

Eurofins Lancaster Laboratory Specialty Testing Services



Sediment & Tissue

*Bioavailability & Bioaccessibility;
Elutriate;
Passive Samplers;
Marine Chemistry*

Water

*Microplastics;
Algal Toxins;
UCMR;
Aquatic Toxicity;
Wastewater Micro*

Air & Vapor

*Ambient Air;
Vapor Intrusion;
Stationary Source Testing*

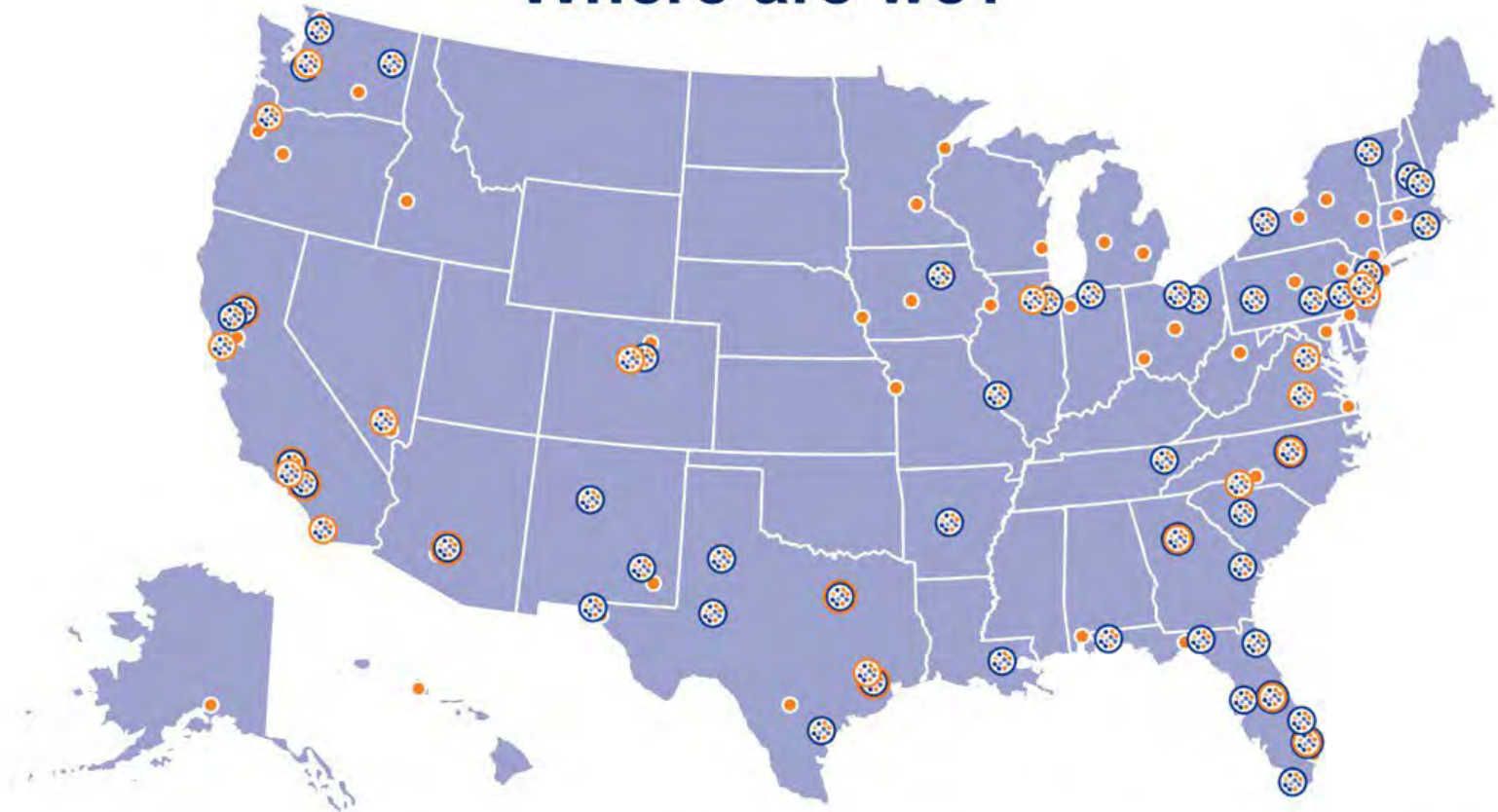
Soil & Hazardous Waste

*Metals Speciation;
Specialty Leaching Methods (LEAF);
Incremental Sampling
Methodology (ISM)*

Additional Services

*PFAS;
6PPD-Quinone;
PCB Congeners;
Dioxin/Furans;
PBDEs;
Alkyl PAH;
Petroleum biomarkers*

Where are we?



Environmental Testing
Laboratory Locations



Built Environment Testing
Laboratory Locations



Service Center Locations

Built Environment Testing Services



Asbestos & Lead



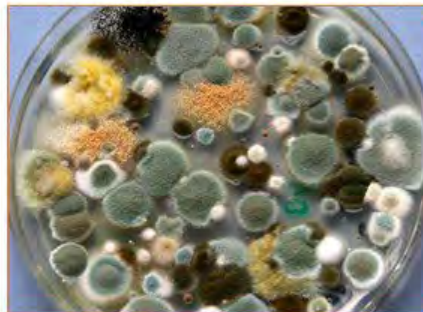
Environmental Forensic Microscopy



Industrial Hygiene



**Legionella &
Endotoxins**



**Mold & Environmental
Microbiology**



**USP- Environmental
Monitoring**

PFAS Methods

- EPA 1633A (QSM 6.0 compliant)
- 537.1
- 533
- Ultra-Short Chain PFAS
- Enhanced TOP Assay
- Branched/Linear analysis
- Forensic PFOA
- Non-Target Analysis/Suspect Screening
- 8421 Modified
- OTM 45 & OTM 50
- EPA 1621
- TF/EOF/AOF by CIC
- FTOHs
- TCLP/SPLP/LEAF



Largest PFAS Capacity in the WORLD

- **Rush** and standard **10-day TAT** available for **EPA 1633A**.
- **Tens of thousands** of PFAS samples analyzed **monthly**.
- Executed **more than 10,000 PFAS Projects**.



PFAS Matrices

Eurofins
Environment
Testing (USA) tests
dozens of
matrices!



Total Fluorine Methods



Adsorbable Organic Fluorine (AOF)

EPA 1621 & in-house method for
aqueous Matrices



Total Fluorine (TF)

Direct combustion of aqueous or
solid matrices

TF includes inorganic and organic
fluorine, as well as polymeric and
non-polymeric **PFAS** if present



Extractable Organic Fluorine (EOF)

Extraction of solid matrices for
organic fluorine only

Will likely not include all polymeric
PFAS





Eurofins Air Toxics: Your Partner in Air Testing

Industry Leadership

- Established in **1989**, global leader in air pollutant analysis.

Unmatched Resources

- Largest air sampling media inventory, **8,000 canisters**.

Broad Analytical Capabilities

- Supports **EPA & ASTM** methods.

Microplastics Testing

- Detection of microplastics from **20 μm to 500 μm .**
- **Matrices:** drinking water, consumer products, non-potable water.
- **Techniques:** visual microscopy & Raman spectroscopy for precise ID.
- **Identification** of microplastics like **PE, PP, PET**, and more.



Thank You!

Guy Sheets

717-803-1204

Guy.sheets@et.eurofinsUS.com



Business 2 Business

SAME NoVA

December 11 2025

Hana Engineers and Consultants, LLC

6800 Paragon Place, Suite 112

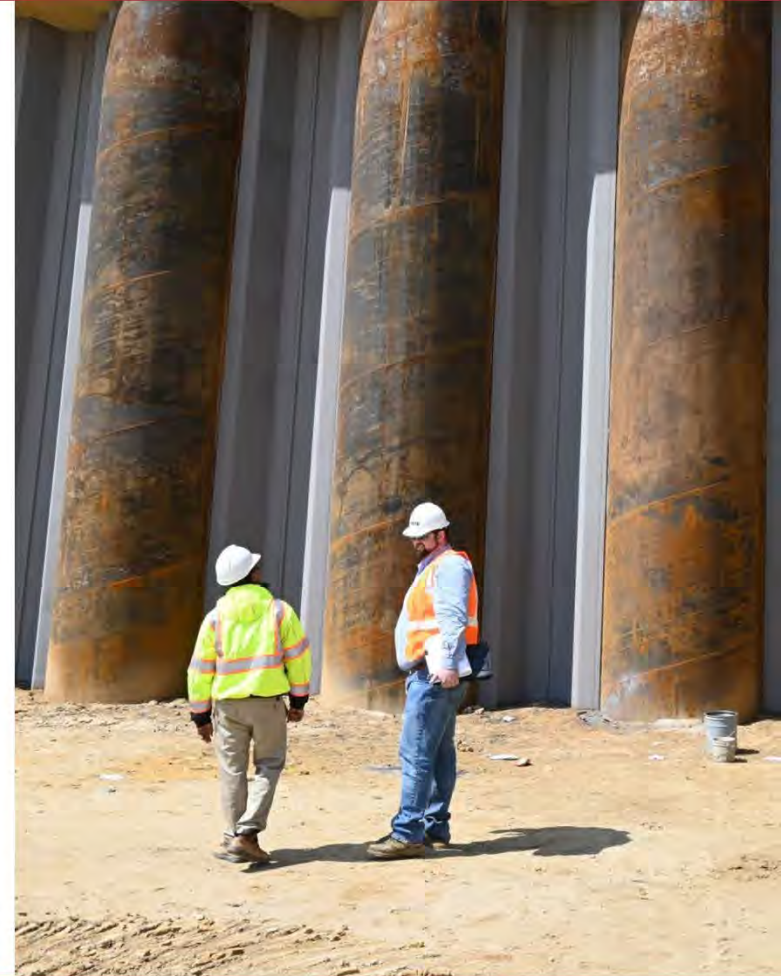
Richmond, Virginia 23230

804-621-1250 | www.hanaengineers.com

About Hana Engineers and Consultants, LLC

Small Company Agility, Big Company Expertise

- ❑ Established in 2013 and headquartered in Richmond, VA, with office in Charleston, SC
- ❑ Successfully executed and completed >150 federal projects totaling >\$50M
- ❑ 64 employees with decades of experience and certifications, including PEs, PGs, PMPs, CQMs, PhDs
- ❑ 8(a) and DBE in many states
- ❑ CPARS and PPQ evaluations are overwhelmingly Exceptional and Very Good, with 96.6% Exceptional and Very Good rating for Quality, Schedule, Cost, Management
- ❑ CMMC Level 1 compliant and actively pursuing Level 2
- ❑ **Looking for Large or SB 8(a) teaming partners in the AE, Environmental and Construction Management space, particularly Civilian Federal Agency work**



Key clients and customers

DoD

- Army (USACE, USAEC, NGB)
- Navy/Marine Corps (NAVFAC, NAVSEA)
- Coast Guard (SILC)
- DLA

GSA (Regions 3 and 8)

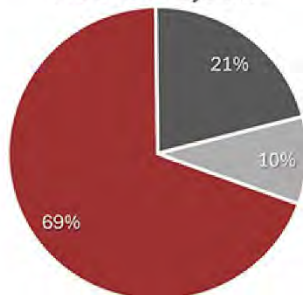
USEPA (Regions 3 and 4)

State Agencies (VDEQ, VDOT)

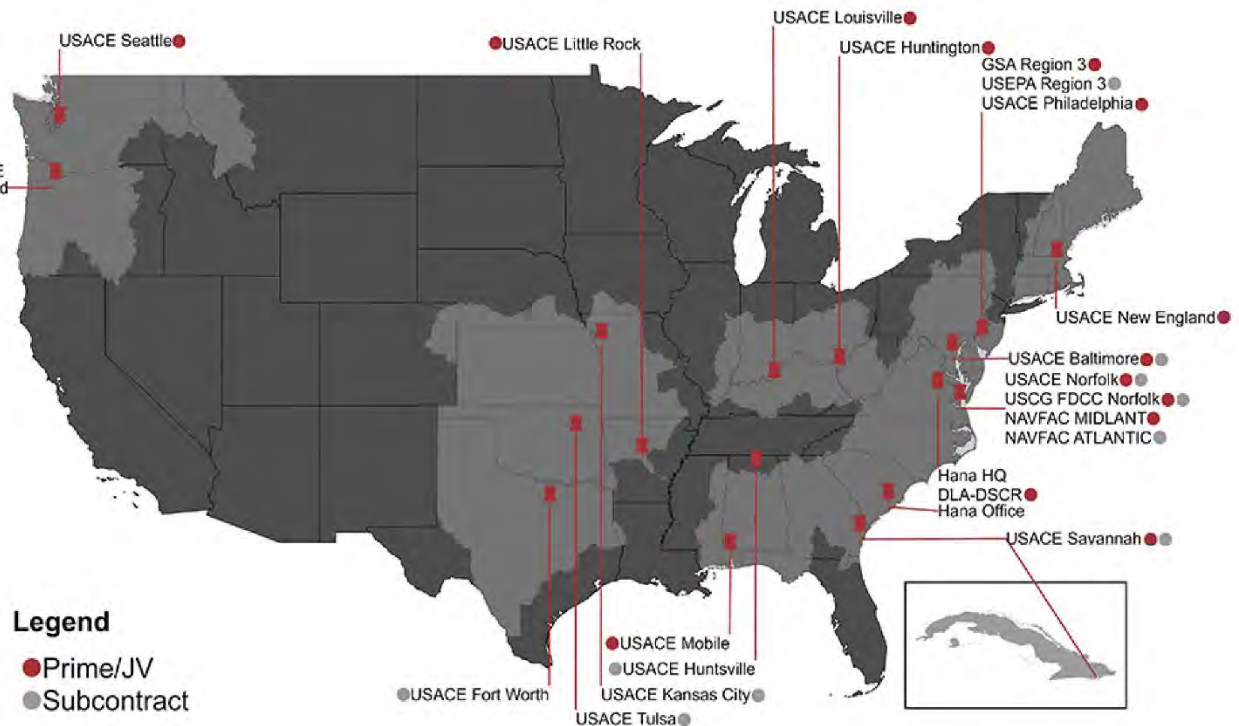
Municipalities

Large Businesses

Active Projects



- Federal
- Commercial
- State/Municipal



Capabilities

Environmental Restoration

- Site Assessments and Investigation
- Risk Assessment
- Remedial Design
- Remedial Action Construction/Operation
- Long-Term Monitoring and Operations and Maintenance (O&M)
- Emerging Contaminants/PFAS
- Five-Year Reviews
- Munitions Investigation, Removal, and Clearance
- Operational Range Sustainment
- Public Affairs and Media Relations
- Expanded Capabilities from Recent Acquisition
 - Remediation and Restoration
 - Earthwork and Environmental Construction
 - Specialty Demolition and Decommissioning
 - Waste Management

Environmental Compliance

- Stormwater
- Wastewater
- Air Permitting
- Solid Waste
- USTs, ASTs, POLs
- Hazardous Materials
- Spill Prevention
- Pollution Prevention

Natural Resource Management

- Environmental Assessments and Environmental Impact Statements
- National Environmental Policy Act (NEPA)
- Ecological Monitoring
- Seawalls / Shoreline Stabilization Assessments
- Coastal Engineering
- Wetlands Delineations

Capabilities

Environmental and Geotechnical Drilling

- Sonic
- Wet rotary (water/mud)
- Air rotary
- Conventional flight augers
- Hollow-stem augers
- Core drilling
- Geoprobe
- Hydraulic profiling tool (HPT)



Capabilities

Engineering and Design

- Treatability Study Design
- Stormwater System Design
- Shoreline Stabilization
- Remediation System Design
- Remediation System Optimization

Construction Management

- Quality Assurance / Control
- Building Information Modeling (BIM)
- Cost Estimating
- Scheduling
- Value Engineering
- Project Management System Implementation and Administration (RMS, Kahua)

Operations / Civil Works

- Geotechnical Engineering
- Dredged Material Management Planning and Guidance
- Beach Nourishment Project Planning and Guidance
- Regional Sediment Management Plans
- Sediment sampling planning and guidance
- Asset Management
- Inspection of Completed Works (ICW)



Additional capabilities and projects can be found through the QR code.

Select Project Menu

Old Point Comfort
Lighthouse
Remediation

Former Manassas
Air Force
Communication
Facility

Risk
Communication and
Public Engagement
– PFAS and Army

Off-Base PFAS
Impacts to Drinking
Water

FY24 Range
Sustainment
Manual for Navy

New Orleans
Small Arms Range
Remediation

Forest Resource
Assessment of
Pine Stands at
Fort Jackson

Deep Creek Bridge
Replacement

Select Projects

Old Point Comfort Lighthouse Remediation

Client/Customer:

USCG Shore Infrastructure Logistics Center

Location: Hampton, Virginia

- ❑ USCG's lighthouse divestiture program.
- ❑ Remediate the 200-year-old Old Point Comfort Lighthouse at Historic Fort Monroe.
- ❑ Following abatement, the lighthouse will be transferred to the Fort Monroe Authority for rehabilitation.
- ❑ Complicating the work is the ongoing archaeological survey for the former Fort George located immediately underneath the lighthouse.

Select Projects

Former Manassas Air Force Communication Facility



Client/Customer: USACE Baltimore District

Location: Independent Hill, Virginia

- ☐ Environmental investigation and remediation support for HTRW executed under FUDS.
- ☐ Groundwater impacted by chlorinated hydrocarbons in complex groundwater flow regime consisting of saprolite and fractured igneous/metamorphic rock.
- ☐ Cutting edge technologies used in field investigation and 3-D modelling to interpret data and present results in Conceptual Site Model.
- ☐ Currently assessing amendment selection and dosage for upcoming injection phases

Select Projects

Risk Communication and Public Engagement



Client/Customer: USACE, U.S. Army

Location: Various

RISK COMMUNICATION

- ☐ Presenting complex PFAS Information to the General Public
- ☐ Soft Skills and Technical Messaging

PUBLIC ENGAGEMENT

- ☐ Community Relations Plans
- ☐ Stakeholder management and engagement
- ☐ Fact sheets and media releases
- ☐ Multimedia outreach
- ☐ Restoration Advisory Board formation and RAB Meeting facilitation
- ☐ Public Meetings and Open Houses

Select Projects

Off-Base PFAS Impacts to Drinking Water



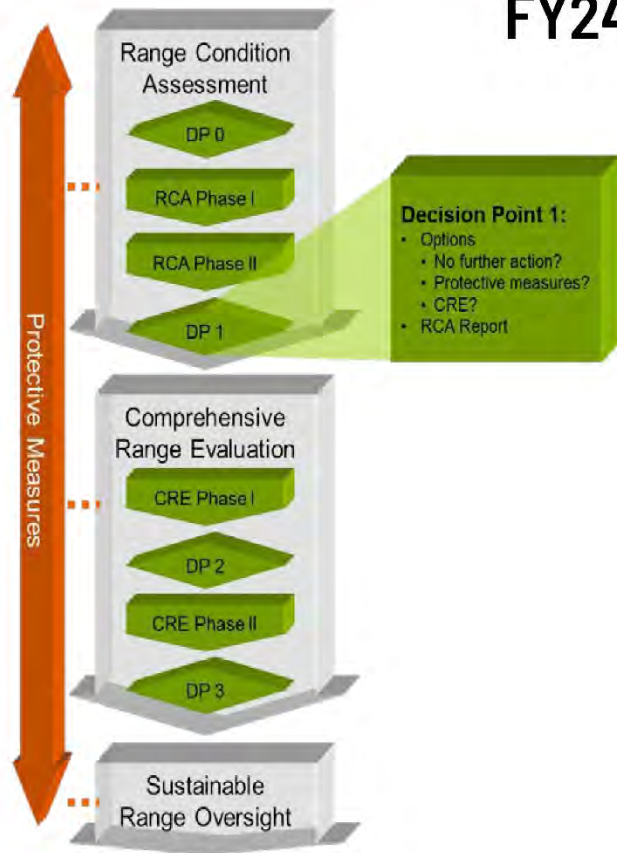
Client/Customer: Army

Location: Various

- ☐ Well survey identified drinking water wells within a 4-mile radius of the bases
- ☐ Sampling conducted for over 35 drinking water wells
- ☐ Property owner coordination
- ☐ Bottled water was provided within 24 hours to affected residents
- ☐ Quarterly sampling and reporting per current guidance

Select Projects

FY24 Range Sustainment Manual for Navy



Client/Customer: SERES/Arcadis JV; USACE Mobile

Location: Indian Head, Maryland

- ❑ Conduct evaluation, process improvement and revision of the existing Range Sustainment Environmental Program Assessment Manual (RSEPA, 2018)
- ❑ Provide review and support of OPNAV's environmental management manual chapter on Range Sustainment supporting the Navy policy
- ❑ Create management of change materials for launching refreshed program

Select Projects

New Orleans Small Arms Range Remediation



Client/Customer: USCG CEU Providence

Location: Remote Communications
Facility New Orleans Belle Chasse, LA

HANA
ENGINEERS & CONSULTANTS, LLC

- ❑ Remediate contaminated soils and demolish structures at an inactive small arms range at the facility.
- ❑ Sample and abandon existing monitoring wells, characterize soils for metals contamination, pilot test of soil amendment for suitability in treating soils, demolish structures, dispose of soils after treatment.
- ❑ Challenges: short field season for migratory birds and bats, berms that include river sediment. Localized groundwater contamination from sediments requires statistical analysis to demonstrate no impacts to groundwater above standards.

Select Projects

Forest Resource Assessment of Pine Stands at Fort Jackson



Client/Customer: USACE Savannah

Location: Fort Jackson, Columbia, South Carolina

- ❑ Timber inventory of more than 8,000 trees over 3,800 acres
- ❑ Field data was collected using Prism, innovative application for recording timber cruising measurements and information.
- ❑ Developed new ArcGIS database incorporating existing and new inventory data
- ❑ Provided on-site training for implementation of Prism and ArcGIS database to Fort Jackson Forestry Department personnel
- ❑ Database will be used to manage habitat for the federally endangered red-cockaded woodpecker population

Select Projects

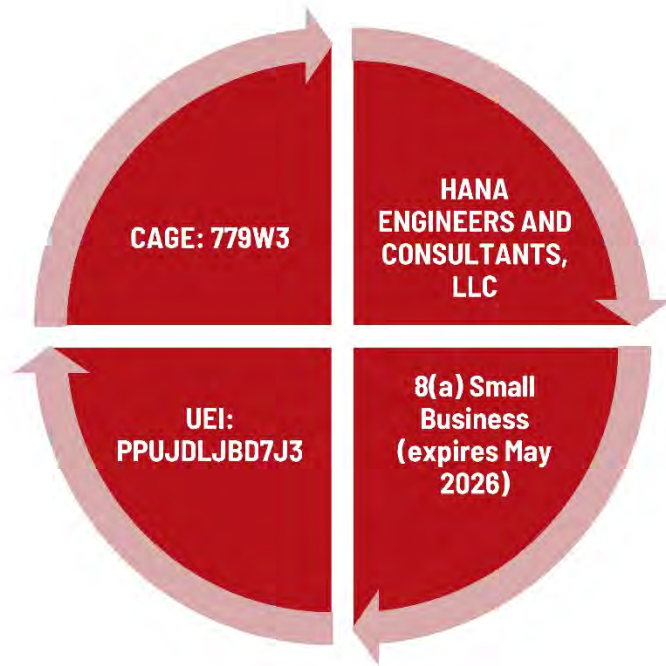
Deep Creek Bridge Replacement

Client/Customer: USACE Norfolk

Location: Chesapeake, Virginia

- ❑ Federally owned Atlantic Intracoastal Waterway (AIWW) Deep Creek Bridge replacement
- ❑ Providing Quality Assurance personnel ensuring Contractor Quality Control systems function properly
- ❑ Three-Phase Control System used to ensure contractor compliance with construction documents and specifications

Contract Information



- **Available Contract Vehicles:**
- **OASIS+ SB Environmental - 47QRC A25DSB52**
- **OASIS+ 8a Environmental**
- **GSA MAS - 47QR A A22D003N**
- **USACE Mobile ERS - W9127823D0016**
- **USACE New England A/E HTRW - W912WJ23D0005**
- **USACE Louisville A/E Environmental - W912QR21D0042**

Contact Us!



Loretta (Lori) Reardon

Senior Scientist

Lori.Reardon@hanaengineers.com

Teams # 804-957-0261



Scott Bailey, PMP

Director, Programs and Projects

Scott.Bailey@hanaengineers.com

757-450-4996





*DUST-HOLD PRO, the ultimate solution for dust control,
temporary roads, and surface protection*

DUST HOLD PRO



DUST HOLD PRO

BEFORE

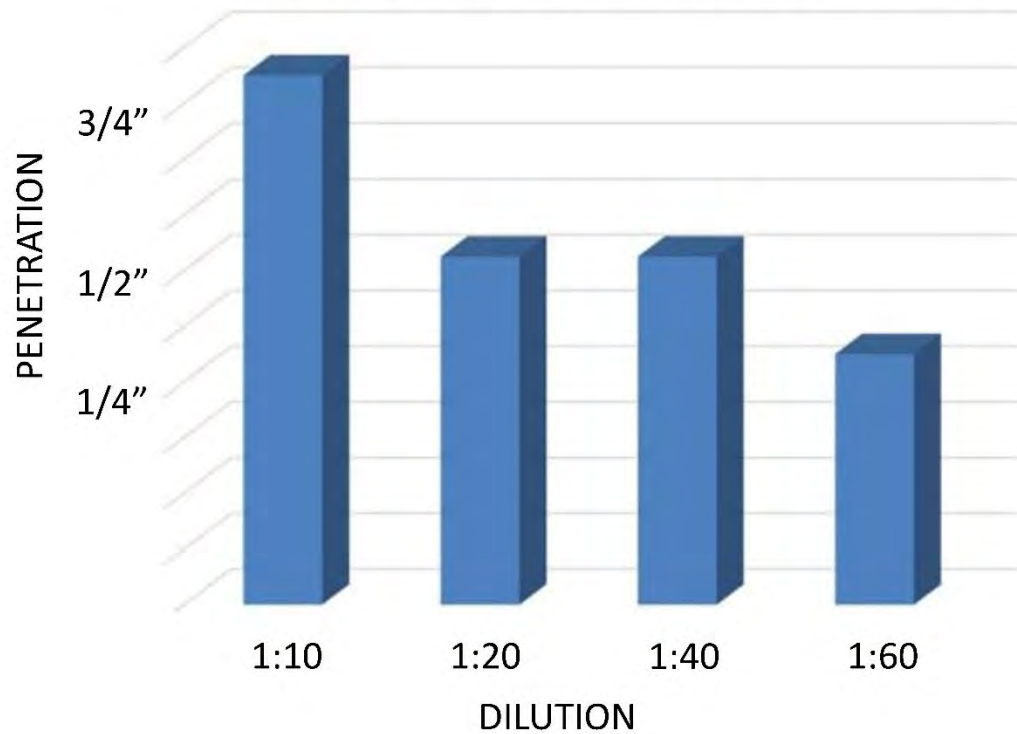


AFTER

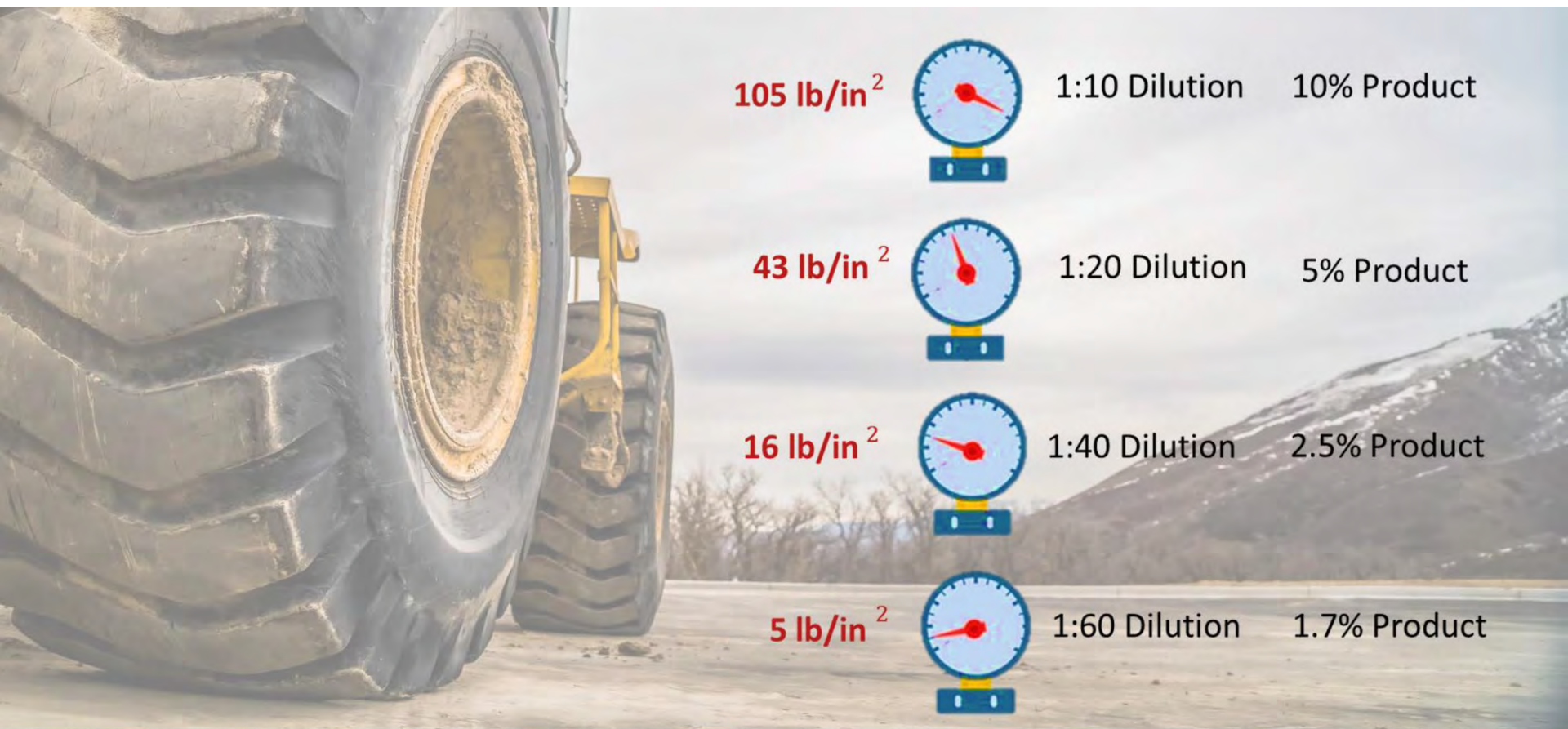


DUST HOLD PRO

SURFACE PENETRATION / WEAR LAYER DEPTH



DUST HOLD PRO



105 lb/in²



1:10 Dilution

10% Product

43 lb/in²



1:20 Dilution

5% Product

16 lb/in²



1:40 Dilution

2.5% Product

5 lb/in²



1:60 Dilution

1.7% Product

DUST HOLD PRO

An aerial photograph of a river with rapids. The water is a vibrant turquoise color, churning with white foam as it flows over numerous large, smooth, light-colored rocks. The perspective is from directly above, showing the intricate patterns of the water's movement.

THE ECO-FRIENDLY SOLUTION MEETING ENVIRONMENTAL STANDARDS

A close-up, top-down view of a riverbed. The surface is covered with a dense layer of small, smooth, rounded stones and pebbles in various shades of brown, tan, and grey. The texture is highly detailed, showing the individual shapes and colors of the rocks.

DUST HOLD PRO



Construction



Access Roads



Oil & Gas



Military Bases



Wind Farms

DUST HOLD PRO



Concentrate Diluted 1:10
Applied to soil surface

Packaging & Logistics:
DUST HOLD PRO comes in
250-gallon IBC totes.

U.S. Standard - Size
48" w X 40" l X 46" h

Gross wt. 2,552 lbs.
(Net product wt. 2409 lbs.;
Tote wt. - 143 lbs.)

L&Q
INTERNATIONAL, INC.

ADVANCED SOIL SOLUTIONS

**Contact L&Q International
to learn how DUST HOLD PRO
can transform your operations.**

INFO@L-Q-International.com
703-299-9575

www.L-Q-International.com

DUST HOLD PRO



SPECIAL THANKS TO THE SAME NOVA POST'S 10TH ANNUAL BUSINESS-TO-BUSINESS (B2B) ENGAGEMENT SPONSORS

