





Capital Budget

Board of Regents Approves Each June

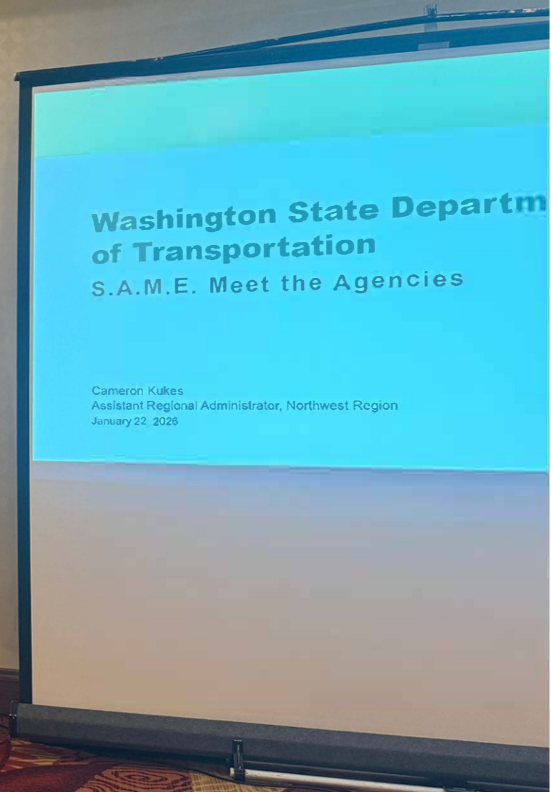
[Annual Capital Budget \(Fiscal Year 2026\) \(pdf\)](#)

- Continued emphasis on limiting Seattle campus growth (0.5% max), ideally 0%
- Focus on building and energy infrastructure renewal; limited new buildings
- Multiple funding sources commonly required
- Constrained debt capacity; much is devoted to UWMC
- Generally constrained fiscal environment with ongoing risks

UNIVERSITY OF WASHINGTON
**ANNUAL
CAPITAL BUDGET**
Fiscal Year 2026







Washington State Department of Transportation

S.A.M.E. Meet the Agencies

Cameron Kukles
Assistant Regional Administrator, Northwest Region
January 22, 2026



Contacts

Chun-Ho Chen – Engineering Manager,
Terminal Preservation
Email: Chunho.Chen@wsdot.wa.gov

Tammy Binkley – System Engineer,
System Engineering
Email: Tammy.Binkley@wsdot.wa.gov





WASHINGTON
APEX
ACCELERATOR
FORMERLY WASH

Are you ready for
the Government
Marketplace?

Washington
Accelerator
help get you

Contact Washington APEX
no-cost advising on how
firm in the government market

Grady Smith
SAMS

American Indian Chamber
Education Fund APEX
Accelerator

WASHINGTON
APEX
ACCELERATOR



Sound Transit



Brad Owen

Sound Transit



Terri Mestas

Sound Transit



SOUNDTRANSIT

Procurement & Contracts Division

Mission: Making a difference through exceptional procurement services.



Department
Transportation

W
FACILITIES
UNIVERSITY of WASHINGTON

Steve Tatge
University of Washington
S&ME





Contacts

Chun-Ho Chen – Engineering Manager,
Terminal Preservation
Email: Chunho.Chen@wsdot.wa.gov

Tammy Binkley – Engineer,
System Engineering
Email: Tammy.Binkley@wsdot.wa.gov







Society of

SAME
American Military Engineers

THANK YOU!

