

17 MAR 2026

INDUSTRY GOVERNMENT ENGAGEMENT

<https://www.same.org/phoenix>

Mr. Timothy Dahms

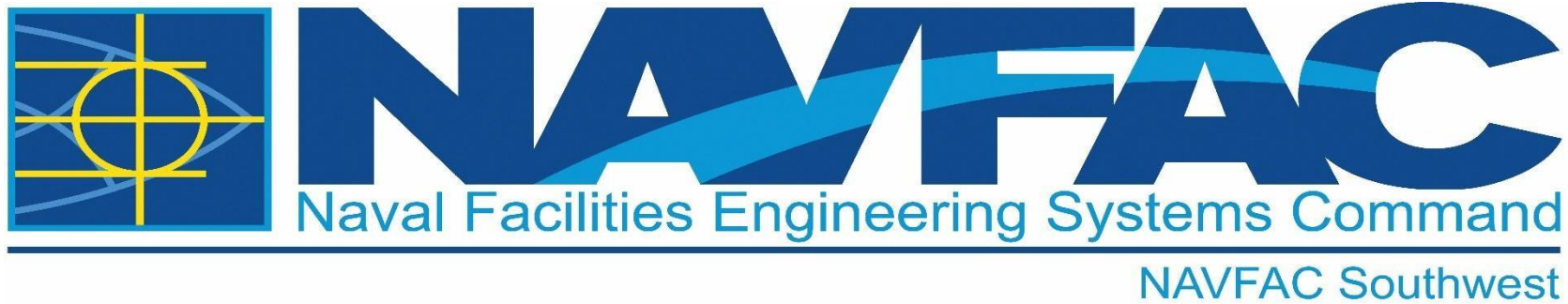
Assistance Operations Officer

NAVFAC Southwest



LCDR Tim Dahms (NAVFAC SW Assistant Operations Officer) has 15 years of engineering experience as a Civil Engineer Corps Officer serving in leadership positions within the Seabees and NAVFAC. As Assistant Operations Officer for NAVFAC SW, he supports 10 ROICC offices for pre and post award construction, manages multiple construction programs for CNIC, SOCOM, and the NCF, and is the NAVFAC SW lead for Alternative Construction Methods. He has worked in support of some of the most significant construction efforts across NAVFAC since 2011 including OICC Camp Lejeune, OICC Marine Corps Marianas, and OICC China Lake. Prior to joining NAVFAC Southwest as the Assistant Operations Officer, he was the Operations Officer for OICC China Lake and completed his MS in Civil Engineering at Stanford University in Sustainable Design and Construction. He also previously served as the Officer in Charge of Naval Support Unit, State Department and that experience led to him publishing his first book, *Detachment November: The Unclassified Story of U.S. Navy Seabees in Diplomatic Security*, which was released in May 2025. LCDR Dahms is a regular presenter on technical and leadership topics at SAME National conferences and currently serves as the SAME National Young Professional Council Chair as well as an Elected Director for the SAME San Diego Post.





SAME Phoenix Post Industry Government Engagement 2026

**LCDR Tim Dahms, P.E.
Assistant Operations Officer, NAVFAC Southwest**

17 MAR 2026

NAVFAC SYSCOM Mission

OUR NORTH STAR

Drive performance and outcomes of SYSCOM Capabilities to effectively enable Fleet readiness and Marine Corps force generation.

- **MILCON**
 - 10 USC Chapter 169, DODM 4270.5
- **Expeditionary & Ocean**
 - 10 USC Chapter 169, DODM 4270.5
- **Acquisition**
 - 10 USC Chapter 169, DODM 4270.5
 - Design & Construction
 - Maintenance & Operations
 - Environmental
 - Real Estate
 - Cybersecurity
 - Non-Tactical Vehicles
- **Weight Handling**
 - 10 USC Chapter 169, DODM 4270.5
- **Real Estate**
 - 10 USC Chapter 169, DODM 4270.5

Strategic Priorities:

1. **ACCELERATE EXECUTION**
2. **SYSCOM AUTHORITIES**
3. **WORKFORCE & PERFORMANCE**

NAVFAC SW Executive Leadership



Today

- Stabilized since Deferred Resignation Program (DRP)

Future

- Shore Command and Control (C2)
- Continued downward pressure on CIV staffing

NAVFAC SW Field Leadership

FIELD LEADERSHIP




<p>Metro Production Division</p>  	<p>Naval Air Facility El Centro</p>   	<p>Naval Air Station Fallon</p>   		
<p>Naval Air Station Lemoore</p>   	<p>Naval Air Weapons Station China Lake</p>   	<p>Naval Base Coronado</p>   	<p>Naval Base Point Loma</p>   	
<p>Naval Base San Diego</p>   	<p>Naval Base Ventura County</p>   	<p>Naval Support Activity Monterey</p>   	<p>Naval Weapons Station Seal Beach</p>   	
<p>Reserve Centers & Special Areas</p> 	<p>Marine Corps Air Station Camp Pendleton</p>  	<p>Marine Corps Air Station Miramar</p>  	<p>Marine Corps Air Station Yuma</p>  	<p>Marine Corps Base Camp Pendleton</p>  
<p>Travis Air Force Base / San Francisco Bay</p>  	<p>Marine Corps Logistics Base Barstow</p> 	<p>Marine Corps Mountain Warfare Training Center Bridgeport</p> <p>Marine Corps Air Ground Task Force Training Command & Marine Corps Air Ground Combat Center Twentynine Palms</p>  		<p>Marine Corps Recruit Depot San Diego</p>  

Today

- Stabilized since Deferred Resignation Program (DRP)

Future

- Shore Command and Control (C2)
 - ROICCs report to OPS vice PWO
- Continued downward pressure on CIV staffing

NAVFAC SW ROICCs Field Leadership

ROICCs FIELD LEADERSHIP



Metro Production Division

CDR Justin Webb
MPO

Naval Air Weapons Station China Lake

LCDR Michael Vuokkari
FEAD Director

Naval Base Coronado

LCDR Huo Urie
FEAD Director

Naval Air Facility El Centro

LT Lance Tate
FEAD Director

Naval Air Station Fallon

LT Zane Witt
FEAD Director

Naval Air Station Lemoore

LCDR Paul Stephens
FEAD Director

Naval Base Point Loma

LCDR Vianello Brown-III
FEAD Director

Naval Weapons Station Seal Beach

LCDR Rita Li
FEAD Director

Naval Support Activity Monterey

LT Alex Monroe
FEAD Director

Naval Base San Diego

LCDR Charles Sheppard
FEAD Director

Naval Base Ventura County

LCDR Christina Waggoner
FEAD Director

Marine Corps Air Station Camp Pendleton

LCDR Justin Charney
FEAD Director

Marine Corps Air Station Miramar

LCDR Dylan Cristofani
FEAD Director

Marine Corps Air Station Yuma

LT Alberto Rodriguez
FEAD Director

Marine Corps Base Camp Pendleton

LCDR Justin Charney
FEAD Director

Marine Corps Recruit Depot San Diego

LCDR Dylan Cristofani
FEAD Director

Travis Air Force Base / San Francisco Bay

LCDR Cory E. Hargrave
ROICC

L.A. Air Force Base / Space Base Delta 3

LT Kevin Gao
Deputy ROICC

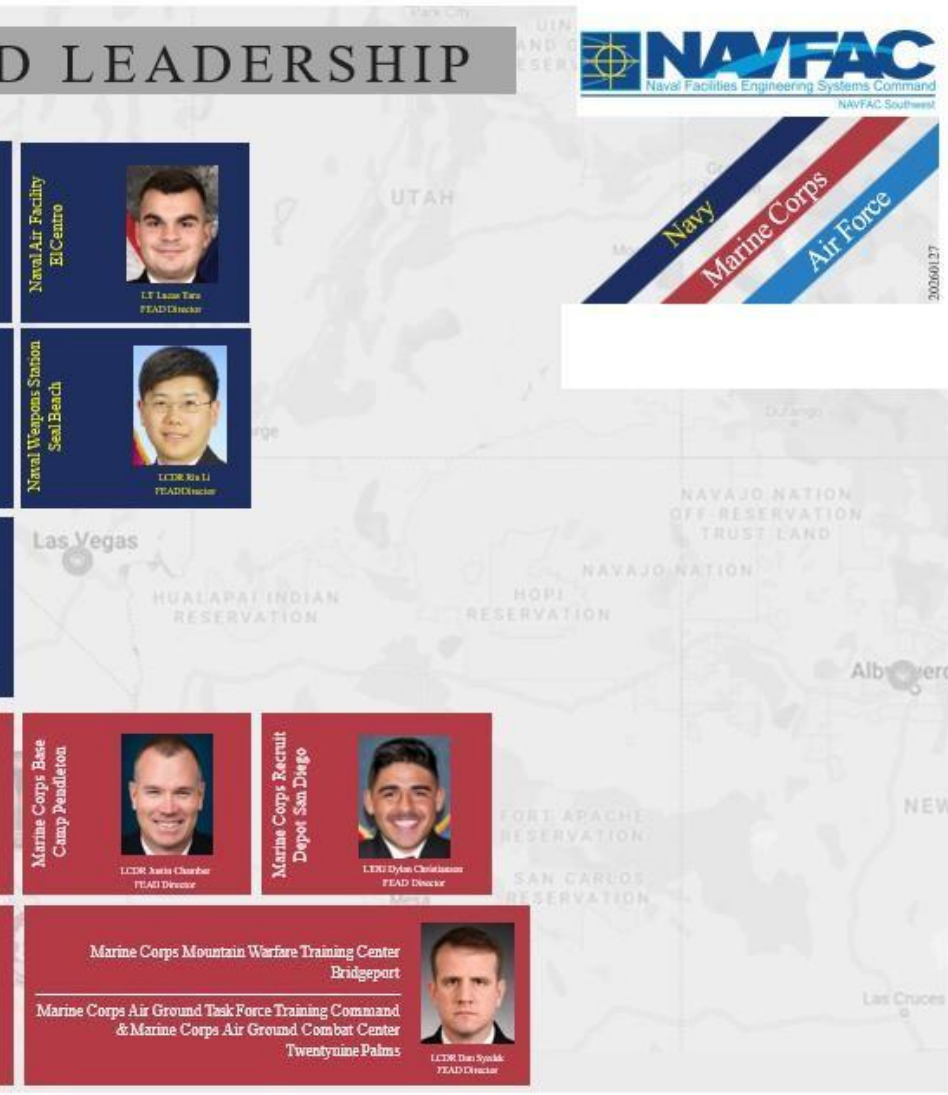
Marine Corps Logistics Base Barstow

LCDR Dan Spodak
FEAD Director

Marine Corps Mountain Warfare Training Center Bridgeport

Marine Corps Air Ground Task Force Training Command & Marine Corps Air Ground Combat Center Twentynine Palms

LCDR Dan Spodak
FEAD Director



20060127

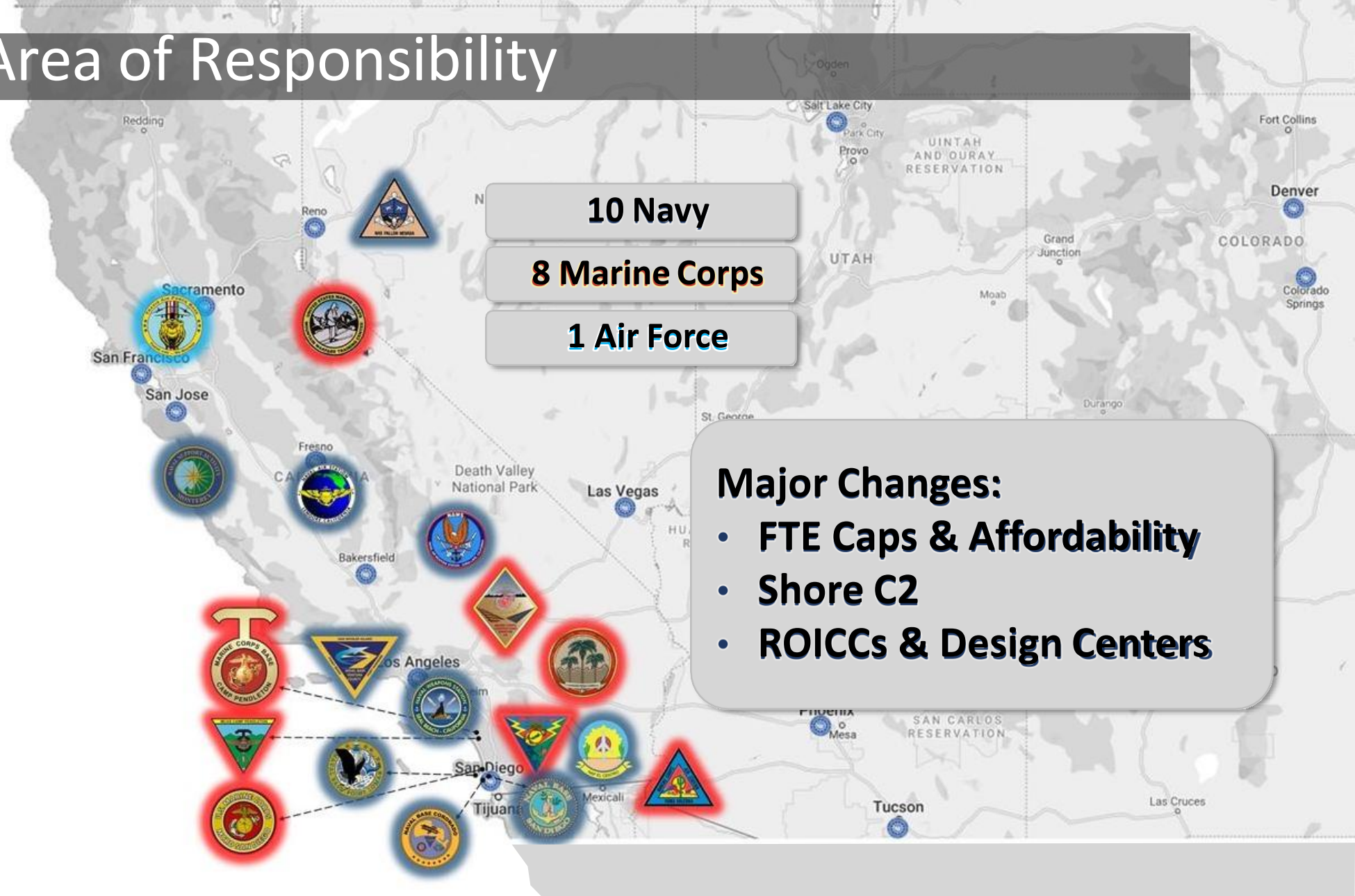
NAVFAC SW Area of Responsibility



~ 102 Military



~ 2,570 Civilians



10 Navy

8 Marine Corps

1 Air Force

Major Changes:

- FTE Caps & Affordability
- Shore C2
- ROICCs & Design Centers

~ \$3B+ of Products & Services Executed Annually Across 6 States!

NAVFAC Southwest Programs

Real Estate Development



Broadway Complex
Old Town Complex
Enhanced Use Leases

Joint Strike Fighter



FY Various
20+ MILCONs
~ \$2B

Fallon Range Training Complex (FRTC)



Range Expansion
656.5K Acres
\$800M

Naval Innovation Center & NPS Modernization






FY Various
1 MCON / 4 FSRM
\$1B+

Quality of Life



Unaccompanied Housing
Single Family Housing
Child Development CTRs

NAVFAC Southwest Construction Outlook

Service Branch	Installation		Pre-Award		Post-Award
	NB Coronado	\$501M	SW: \$2.7B	\$417M	SW: \$2.8B
	NAS Lemoore	\$379M		\$269M	
	NAWS China Lake	\$15M		\$605M	
	NB San Diego	\$386M		\$343M	
	NWS Seal Beach	\$0M		\$55M	
	NAS Fallon	\$200M		\$71M	
	NB Ventura County	\$296M		\$528M	
	NB Point Loma	\$77M		\$259M	
	NAF El Centro	\$10M		\$29M	
	NSA Monterey	\$791M		\$243M	
	MCB Camp Pendleton	\$1B	SW: \$1.6B	\$762M	SW: \$1.8B
	MCAS Miramar	\$86M		\$178M	
	MCAGCC 29 Palms	\$131M		\$341M	
	MCAS Yuma	\$342M		\$219M	
	MCLB Barstow	\$23M		\$28M	
	MCRD San Diego	\$17M		\$145M	
	MCAS Camp Pendleton	\$0M		\$23M	
	MCMWTC Bridgeport	\$42M		\$29M	
	Travis AFB	\$227M	\$227M	\$87M	\$87M
			SD: \$1B (37%)	SD: \$1B (36%)	
			SD: \$1.1B (67%)	SD: \$1.1B (61%)	

Post Award Construction Workload @ \$4.5 Billion for FY26+

MILCON – Navy & USMC Planned*

Location	P- Number	Project	RFP	Range	RFP Date
Travis AFB	9904	MEDICAL CONSOLIDATED STORAGE AND DEPLOYMENT CENTER ADDITION	DBB	\$40M+	Q4 FY26
	3009	CONSTRUCT CHILD DEVELOPMENT CENTER	DB	\$60M+	Q2 FY26
MCB CP	2004	AREA (52) COMMUNICATION CENTER	DB	\$10M+	Q3 FY26
	2505	AREA 43 MESS HALL	DB	\$100M+	Q3FY26
	2193	AMBULATORY CARE CENTER ADDITION/ ALTERATION	DBB	\$20M+	Q3 FY26
29 Palms	1241	COMMUNICATIONS TOWERS	DB	\$40M+	Q4 FY26
	25003U	NON-POTABLE DEDICATED FILL LINE	DB	\$5M+	FY26
NB Coronado	1073	FORD CLASS CVN INFRASTRUCTURE UPGRADES, PIER LIMA	DB	\$100M+	FY26
	961U	INTEGRATED TRAINING FACILITY	DB	\$10M+	FY26
	1217U	FIRE PROTECTION FOR MUNITIONS (BRAVO) PIER	DB	\$5M+	Q2 FY26
NAF EC	223U	WATER RESILIENCE	DBB	\$5M+	Q2 FY26
NAS Fallon	448	RANGE TRAINING COMPLEX IMPROVEMENTS	TBD	\$40M+	Q4 FY26

Navy & USMC MILCON workload projected at \$435M+ in FY26

O&M Navy Projects – Planned*

Location	P- Number	Project	RFP	Range	RFP Date
NB Coronado	RM18-1676	PHIBCOR-169 Rehab Combat Training Tank Complex CTT 169 (E2)	DB	\$15M+	FY26
	RM19-1262	NBC-1470 Convert Bldg 1470 to Controlled Facility	DB	\$12M+	Q2 FY26
NB Ventura County	RM23-1249	23532528 - {POM} RM23-1249 - SECURITY IMPROVEMENTS FOR ICD-705 COMPLIANCE, PM553	DB	\$7M+	FY26
	RM23-1252	23533433 - RM23-1252 - SECURITY IMPROVEMENTS FOR ICD-705 COMPLIANCE, PM365	DB	\$7M+	FY26
	RM22-0396	RENOVATE PM50 IN SUPPORT OF MQ-25A	DB	\$3M+	FY26
	RM20-1262	RM 11-0505, REPAIR PH ELECTRICAL DISTRIBUTION SYSTEM CIRCUITS 1,4,8,15,17,18,19 & 20 (PHASE 9)	DBB	\$11M+	Q3 FY26
	ST18-1727	22806021 - REPAIR PAVEMENT TAXIWAYS A & B	DBB	\$63M	Q4 FY26
NB Point Loma	RM19-0589	FCTCSD-60 IPT - Third Fleet MOC in C60	DB	\$45M+	FY26
	RM22-0304	Carrier Strike Group 15 HQ & OPS Renovation	DB	\$52M+	FY26

Navy FSRM workload projected at \$215M+ in FY26

O&M USMC / Marine Corps Barracks Initiative – Planned*

Location	Project Number	Project	Design Strategy	Program Range	Planned RFP Date
MCRD	SD2109M	SD2109M REPLACE SUBSTATION TL-14-1, MCRD, SAN DIEGO, CA	DB	\$2M+	FY26
MCB CP	PE2525M	PE2525M REPAIR 53 AREA TRAINING TANK COMPLEX	DB	\$5M+	FY26
MCLB BARSTOW	BA2027M	BA2027M Renovate Windows and Ventilation, at Warehouse 403	DB	\$2M+	Q2 FY26
	BA2109M	BA2109M REPLACE EQUIPMENT AT YERMO ELECT SUB-STATION	DB	\$10M+	Q2 FY26
	BA1802M	BA1802M Replace Radio Fire Alarm System	TBD	\$3M+	FY26
MCAS YUMA	YU2045M	YU2045M JSF Hangar Pre-conditioned Air System Repair Hangar 75	DBB	\$5M+	FY26
	YU2046M	YU2046M JSF Hangar Pre-Conditioned Air System Repair, Hangar 76	DBB	\$5M+	FY26
MCAS CP	PA2401M	PA2401M REPAIR AIRFIELD PAVEMENT AT MCAS CPEN	DBB	\$14M+	FY26
29 PALMS	BP2302M	BP2302M Command Post HVAC Repair	DB	\$7M+	FY26
	TP21013M	REPAIR POTABLE WATER SYSTEM/LATERAL PHASE 1 (ADOBE STREET)	TBD	\$7M+	FY26
	TP21014M	Repair High Temperature Hot Water HTHW Zone 1 Phase 2 (3rd St) - Mainside	TBD	\$5M+	FY26
Various	MANY	BEQ Upgrades and Replacements	DB	\$850M+	FY26

USMC Major BEQ Program firming-up is projected at ~\$850M+ (FY26)

NAVFAC SW MAJOR Projects in Eastern AOR

<u>P Number</u>	<u>Title</u>	<u>Location</u>	<u>Project Range</u>	<u>RFP Release Date</u>
N/A	ELCENT-535 - Demo B-535, 536, 537 Bachelor Enlisted Quarters and Garbage Locker Galley	NAF EL CENTRO	\$1-5M	MAY 2025
YU2045M	JSF Hangar Pre-conditioned Air System Repair Hangar 75	MCAS YUMA	<\$15M	JUN 2025
P-1241	COMMUNICATIONS TOWERS	MCAGCC 29PALMS	\$15-50M	JUL 2025
YU2321R	Construct G/ATOR Site at CADC	MCAS YUMA	\$1-5M	SEP 2025
YU2322R	Construct G/ATOR Site 2 at CADC	MCAS YUMA	\$1-5M	SEP 2025
P-223U	WATER RESILIENCE	NAF EL CENTRO	\$1-5M	SEP 2025
BP2302M	Command Post HVAC Repair	MCAGCC 29PALMS	<\$15M	SEP 2025
P-481	ENERGY RESILIENCE, Phases 3 & 4	MCAGCC 29PALMS	\$15-50M	MAR 2026
TP24016M	Repair Bldg. 1619 MCLOG Facility	MCAGCC 29PALMS	<\$15M	MAY 2026
P-591	WATER TREATMENT PLANT	MCAS YUMA	>\$100M	JUN 2026
YU2102M	Repair BEQ 635	MCAS YUMA	>\$50M	JUN 2026
BP2205M	LBC Squad Bay Repairs	MCAGCC 29PALMS	<\$15M	JUL 2026
TP21013M	Repair Potable water Distribution System (1400 Area) - Mainside	MCAGCC 29PALMS	>\$50M	JUL 2026
P-1311U	Correct WTP RO Brine Pond Capacity	MCAGCC 29PALMS	<\$15M	JUL 2026
BP2021M	Repair Bldg 4044 and Improve Grounds	MCAGCC 29PALMS	\$1-5M	AUG 2026

Multi-Award Construction Contracts (MACC)

Commercial & Institutional	Waterfront	Hubzone Small Business	Medical
\$3B Capacity / \$720M Avail	\$750M Capacity / \$313M Avail	\$495M Capacity / \$316M Avail	\$1.0B Capacity / \$546M Avail
CLARK CONSTRUCTION GROUP GILBANE FEDERAL HARPER CONSTRUCTION COMPANY HENSEL PHELPS CONSTRUCTION COMPANY R A BURCH CONSTRUCTION RQ CONSTRUCTION TUTOR PERINI CORPORATION WALSH FEDERAL, LLC	DoD MARINE CONSTRUCTORS, JV THE DUTRA GROUP GRANITE-HEALY TIBBITTS, JV MANSON CONSTRUCTION MARATHON CONSTRUCTION R.E. STAITE ENGINEERING REYES CONSTRUCTION TNT CONSTRUCTORS	I E PACIFIC PACIFIC WEST BUILDERS PETER VANDER WERFF CONST HEFFLER CONTRACTING GROUP SEA PAC ENGINEERING INTERCONTINENTAL CONST CONTG SGS SHORE HERMAN, JV CJW, JV	DPR-RQ CONSTRUCTION GILBANE FEDERAL, JV HENSEL PHELPS CONSTRUCTION KIEWIT BUILDING GROUP THE ROBINS & MORTON GROUP STRUCTSURE PROJECTS WALSH CONSTRUCTION
General Construction Small Business	Heavy Horizontal	Dry Utilities Small Business	Demolition
\$495M Capacity / \$129M Avail	\$1.0B Capacity / \$732M Avail	\$495M Capacity / \$214M Avail	\$249M Capacity / \$185M Avail
HEFFLER CONTRACTING GROUP HHI CORPORATION I.E. PACIFIC PETER VANDER WERFF CONST R.A. BURCH CONSTRUCTION	A&R PACIFIC-GARNEY FEDERAL, JV BALDI BROS BARNARD CONSTRUCTION BCSS CJW CONSTRUCTION FLATIRON WEST HEFFLER CONTRACTING GROUP REYES CONSTRUCTION RQ-ORION, JV R.C. CONSTRUCTION	LEAD BUILDERS POWER PRO PLUS SES CIVIL AND ENVIRONMENTAL SOUTH BAY EDC SOUZA CONSTRUCTION SYNERGY ELECTRIC COMPANY UTILITY CONSTRUCTION COMPANY	SPEEDWAY ORION JV BHATE ENVIRONMENTAL ASSOCIATES BTS EQUIPMENT UNLIMITED JKS INDUSTRIES RESOURCE ENVIRONMENTAL SEA PAC ENGINEERING STAMPEDE VENTURES TARGET CONTRACTORS CODY M STEVENS CONSTRUCTION

Multi-Award Construction Contracts (MACC)

Wet Utilities	POL Fuels	Secure Facilities	Paving SB
\$249M Capacity / \$192M Avail	\$150M Capacity / \$48M Avail	\$224M Capacity / \$164M Avail	\$99M Capacity / \$39M Avail
A&R PACIFIC-GARNEY FEDERAL JV AMA DIVERSIFIED CONSTRUCTION GROUP BETHEL DOWNSTREAM JV BONITA-FILANC JV CENTRAL ENVIRONMENTAL INC. CJW CONSTRUCTION INC. FRAWNER CORPORATION GUSTAV KEONI dba PRECISION CONSTRUCTION SERVICES ORION CONSTRUCTION CORP	GOSHAWK KINLEY CONSTRUCTION NOVA GROUP POND CONSTRUCTORS	DAWSON ENTERPRISES HEFFLER CONTRACTING GROUP HERMAN CONSTRUCTION GROUP HHI CORPORATION R.A. BURCH CONSTRUCTION CO	CJW CONSTRUCTION ROMERO GENERAL CONSTRUCTION MARTIN BROTHERS CONSTRUCTION DE LA FUENTE CONSTRUCTION COMMAND PERFORMANCE CONSTRUCTION ACCESS GENERAL CONTRACTING PORTILLO CONCRETE
Airfield Paving	Southern CA / AZ (Mini)	Central CA (Mini)	HVAC
\$495M Capacity / \$327M Avail	\$99M Capacity / \$24M Avail	\$99M Capacity / \$57M Avail	\$200M Capacity / \$194M Avail
BALDI BROS INC. COFFMAN SPECIALTIES INC. FLATIRON WEST, INC. GRANITE CONSTRUCTION COMPANY KIEWIT INFRASTRUCTURE WEST CO. PAVE-TECH INC. SOUTHWEST CONCRETE PAVING CO. T1-MW JOINT VENTURE	AHTNA-CDM JV BRISTOL DESIGN BUILD SERVICES CORBARA-MGS JV HEFFLER CONTRACTING GROUP MACRO Z TECHNOLOGY TEEHEE ENGINEERING	WU & ASSOCIATES MACRO Z TECHNOLOGY CORBARA-MGS JV PACIFIC WEST BUILDERS AHTNA-CDM JV INSIGHT PACIFIC DIMENSIONS CONSTRUCTION I.E. PACIFIC	ABLE HEATING & AIR CONDITIONING INC. ASTRO MECHANICAL CONTRACTORS INC. FEDVET CONSTRUCTION MCKENZIE CONSTRUCTION & SITE DEVELOPMENT LLC PARADIGM MECHANICAL CORP. SERGENT'S MECHANICAL SYSTEMS, INC.

Multi-Award Construction Contracts (MACC)

Coming soon!

ACM	Commercial & Institutional
\$5B Capacity / \$5B Avail	\$TBD Capacity / \$TBD Avail
Source Selection Calendar Year 2026 TO Range: \$15-250M	Source Selection Planning Calendar Year 2027 TO Range: TBD

Architect/Engineer Toolbox (IDIQs)

TITLE / SCOPE	TYPE	FIRM
Facility Planning	SB	Makers Architecture & Urban Design
Builders Facilities Assessments, MC WW	UR	Stantec GS – WSP JV
Encroachment Services	-	Stantec GS
Architect (multi-discipline)	UR	Jacobs Government Services
Multi-disciplinary	SB	Techtonics, dba Andrew C Chen
Civil	UR	Michael Baker International
Civil	8(a)	GHD-Kalua AE JV
Structural	UR	Reid Middleton
Geotechnical	8(a)	Del Mar Environmental & Construction
Survey & Mapping	UR	Hunsaker & Associates
Waterfront	UR	GHD-COWI, JV
Electrical / Mechanical / Fire Protection	UR	Burns & McDonnell Engineering Company
Electrical / Mechanical / Fire Protection	SB	Shadpour Consulting Engineers
Cost, Scheduling, TIAs, REAs	SB	Hunter Pacific Group
Building Commissioning Services	SB	DAV Energy Solutions

Environmental Toolbox

Compliance	Natural Resources	Cultural Resources	Restoration	Range Sustainment
<p>Stormwater NICKLAUS AMEC JV</p> <p>OHS Spill Response BLACK GOLD INDUSTRIES G2RJ INC DBA TREVET</p> <p>Lab Services APTIM</p>	<p>Natural Res MAC VERNADERO GROUP GSRC BIORESOURCE CONS HERCULES JV</p> <p>Marine Habitat MAC TIERRA DATA INC MERKEL & ASSOCIATES MILLER MARINE APPLIED MARINE SCIENCES JV</p> <p>HISS MASC TIERRA DATA INC SIERRA JV GSRC ACS HABITAT MGMT INC ACACIA7</p>	<p>Cultural Resources MASC PAX ENVIRONMENTAL ASM AFFILIATES INC STATISTICAL RESEARCH INC ERG-TERRACON JV, LLC ALTA ARCHAEOLOGICAL</p> <p>Curation SD ARCHAEOLOGICAL CNTR</p>	<p>CLEAN TRIQUETRA</p> <p>MARAC BETHEL-TECH JV NORTH WIND-CDM JV, LLC OCH, JV EA-WOOD-1 MPJV ECC ENV LLC</p> <p>SB EMAC BETHEL-TECH PACIFICJV ECC ENVIRONMENTAL CAPE-WESTON JV1 INSIGHT TIDEWATER NOREAS APTIM JV</p> <p>8(a) EMAC NOREAS-APTIM Insight-Tidewater BETHEL-TECH PACIFICJV CAPE-WESTON JV1, LLC</p> <p>RADMAC APTIM FEDERAL SERVICES, LLC ECC EXPEDITIONARY CONSTR,LLC ENERGY SOLUTIONS FEDSUPPORT INSIGHT TIDEWATER, LLC ITP AMERICA, LLC PERMA-FIX ENV SERVICES, INC</p> <p>SB CERCLA/RCRA Trevet-NOREAS</p> <p>EV Records NORTHWIND SITE SERVICES LLC</p>	<p>TAP MANTECH SRS TECHNOLOGIES</p> <p>RANGE SUSTAINMENT USA ENVIRONMENTAL, Inc EA-RELYANT JV HL/VRH FED SERV PIKE-INSIGHT BERING SEA ECCOTECH EERG</p>

NAVFAC Southwest Public Affairs



Public Affairs Officers: **Edward Cartagena** (619) 705-5855 **Mario Icarl** (619) 909-8746 and **Katie Cadio** (619) 887-3735

Email: [NAVFAC SW PAO UD@us.navy.mil](mailto:NAVFAC_SW_PAO_UD@us.navy.mil)

Q & A

Thank You



PHX POST

JOIN
SAME
PHX



LINKEDIN

Society of
SAME
American Military Engineers
Phoenix Post



FEEDBACK REQUEST

- Future Topics that you would like to see
- Please let us know what you liked / didn't like
 - Event location
 - How we can improve
- Speaker / Sponsorship Opportunities



Chad Brossman, Programs
chad.brossman@rsparch.com
480.889.2025

Neil Wentz, Programs
neil.wentz.2@us.af.mil
623.856.6136

Ryan Gibson, President
ryan.gibson@spur-design.com
602.584.5010

<https://www.same.org/phoenix>