

May 5, 6 & 7

SA Post Small Business Market Research Fair 2026

SAME San Antonio Post's annual Industry Government Engagement with AFCEC and various USACE Districts and more returns this summer as a **three-day event** designed for connection, insight, and engagement.

Day 1 (May 5th): Scholarship Fundraiser Golf Tournament

Join us at **Canyon Springs Golf Course** for a Cinco De Mayo themed golf tournament! Breakfast and lunch provided with an 0800 shotgun start!

Day 2 (May 6th): SAME and Government Briefings with Panel Discussions

A full day of presentations and briefings from SAME Local and National Leaders followed by AFCEC Leader Gen. Miller and various Branch Chiefs.

Day 3 (May 7th): One-on-One Networking Sessions and Texas Region Career Transition Workshop Breakout Sessions

Appointments scheduled onsite with priority given to Small Businesses and Sponsors first. Available until all slots filled.

Conference Location:
Embassy Suites Landmark
5615 Landmark Pkwy
San Antonio, Texas 78249

https://www.eventleaf.com/e/2026_SmallBusinessMarketResearchFair_and_Golf

2026 Event Contacts:

Bonnie Hopke, Registration bonniejeand@msn.com
Sarah Fowlkes, Post President sarah.fowlkes@jacobs.com



CLICK ANY WHERE ABOVE TO GO TO REGISTRATION

| | | | | | |
|--|--|-------|--|-------|--|
| C O N T E N T S | Board Positions | 2 | Veterans Support | 14 | C O N T E N T S |
| | President's Corner | 3 | DOD Updates | 15 | |
| | Membership | 4-6 | Upcoming Events | 16 | |
| | Professional Development | 7-10 | Honor Gallery | 17-18 | |
| | Partnering | 11 | Board Members | 19-21 | |
| | STEM | 13-12 | Sustaining Members | 22-26 | |
| | College Outreach | 13 | Sustaining Members | 22-26 | |

Post Board Positions

Post Volunteers Needed

We are looking for Post members interested in serving in a few appointed Board positions that are currently vacant. Appointed positions are filled by members that are appointed / re-appointed each year by the incoming Post President.

To serve in any Post Board position you **MUST BE** a SAME member in good standing and be affiliated with the San Antonio Post as listed on the **current Post membership rosters**. You must keep your membership current.

The following are the positions we are seeking volunteers for:

- **Assistant Post Secretary**- responsible for the administrative matters of the Post in conjunction with the elected Post Secretary.
- **STEM Outreach Coordinator** - responsible for coordinating with local organizations to identify local STEM activities, helps with getting Post volunteers to support the activities, plans and executes the Post support of the activities.
- **Holiday Celebration Chair** - responsible for leading the Committee that organizes and executes the annual Holiday Celebration Gala at the end of the year.

The Post Board is organized as shown in the chart at **<https://www.same.org/san-antonio/board-of-direction/>**.

These positions require a few hours per month. Our Post Board meetings are conducted virtually by Zoom (typically on the last Thursday of the month - we try not to hold a Board meeting in December). Board members are expected to attend at least 3 Board meetings in addition to the work required for their position.

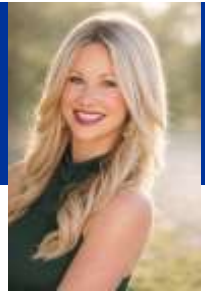
These positions are a great stepping stone to start your journey into Post leadership!

If interested, email **samesatx@gmail.com**.





President's Corner



Hello Post Members & Friends,

As we reach the halfway point of our fiscal year, I find myself reflecting on both how far we have come and the meaningful work we still have ahead. These past months have been a testament to the strength of our mission and the dedication we have to this industry with the support of this incredible community. Thanks to everyone's energy, resiliency, and belief in our united mission, the first half of the fiscal year has been filled with meaningful progress and inspiring moments.

Because of our industry's continued support, we've made measurable progress towards our Post's goals- expanding our programs and partnerships, deepening our impact within the community, and engaging with more Young Professionals than ever before. At the same time, this midpoint offers an important opportunity to assess, recalibrate, and ensure we are making the most of every resource and connection entrusted to us.

The months ahead are just as critical. As a team, we will continue to build on our current momentum, address challenges head-on, and continue to advance the work that matters so deeply to all of us.

With all of that in mind, here's what's coming up in the month of May:

- The annual Small Business Market Research Fair (SBMRF) will be held on May 6 – 7th at the Embassy Landmark Hotel (registration will open soon!) and our Post Scholarship Fund Golf Tournament will occur the day prior on May 5th (Cinco De Mayo) at Canyon Springs Golf Course (see https://www.eventleaf.com/e/2026_SmallBusinessMarketResearchFair_and_Golf)
- Upcoming Young Professional (YP) Event will be held on May 14th, 2026, at Idle Beer Hall and Brewery from 4:30pm-6:30pm. To register, please email Andrew Silvas at asilvas@broadbentinc.com.
- JETC 2026: Innovate Forward will be held on May 19-21, 2026, at the Oregon Convention Center in Portland, Oregon. (see <https://www.samejetc.org/>)

If you're interested in getting more involved, please don't hesitate to reach out! We are always looking for volunteers and have many opportunities for members to get involved!

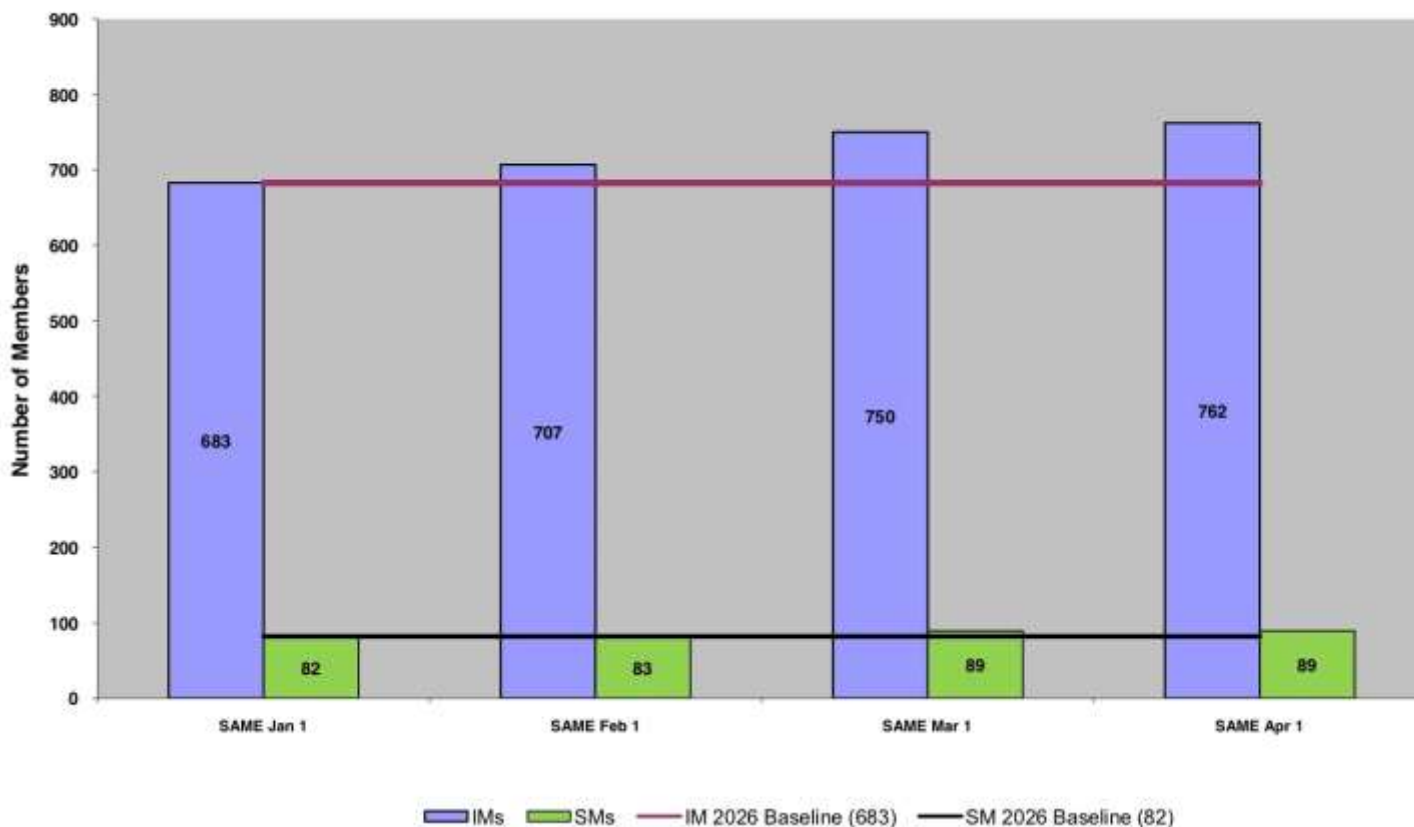
Thank you for being an essential part of our Post and know that together, we are making a difference. Cheers to the rest of the Fiscal Year!

Sarah Fowlkes
Post President

From the President's Desk

Membership

2026 San Antonio Post Membership
(Goal: Growth in IM plus SM Changes)



If you are a member, be sure to check your membership status!

Go to <https://www.same.org/san-antonio/membership-rosters-stats/> for Individual, Organization and Student Member Rosters

Learn more about our Post - click [HERE](#) for our New Member Handbook

**YOUR
MEMBERSHIP
MATTERS**

NEW MEMBERS

We would like to welcome our new members who joined or re-joined (in a new capacity) our Post from Mar 1 – Apr 1, 2026:

| NAME | ORGANIZATION | TYPE |
|-------------------|-------------------------------|------------------|
| Lisa Brandon | PRIME AE Group Inc | Private Industry |
| Miguel Gallegos | FPM Remediations Inc. | Private Industry |
| Mackenzie Hirt | AECOM | Private Industry |
| Jacob Lang | US Army | Government |
| Carol May | Half Associates Inc. | Private Industry |
| Joshua McClure | Half Associates Inc. | Private Industry |
| Jonathan McNamara | Colliers Engineering & Design | Private Industry |
| Eric Patterson | OEC Process (Onion Equipment | Private Industry |
| Jeff Rodriguez | Choctaw Defense Services | Private Industry |
| Brindle Summers | Pond & Company | Private Industry |
| Gary Sutfin | Phoenix Pollution Control & | Private Industry |
| Steven Williams | | Student |
| Jason Winn | CACI International Inc. | Private Industry |

We would also like to welcome our new organizational members who joined or re-joined our Post from Mar 1 – Apr 1, 2026:

| ORGANIZATION | TYPE |
|---------------------------------------|----------------|
| OEC Process (Onion Equipment Company) | Private Sector |



THANKS FOR
JOINING US

RELOCATING???

Did you get a new job or assignment? Or maybe there's some other reason you are or soon will be relocating away from the San Antonio area? There are many important things to think or be concerned about when moving - home, utilities, school for the kids, changing of mail address, vehicle registration and more.

Those, of course, are everybody's focus areas as they prepare for the next big step in their career or personal lives.

As you work those things in your move, it's easy to forget about your SAME membership. Things like what happens to my membership or is there a Post/Field Chapter where I'm relocating to may not be on the top of your list to think about and rightfully so.

So we are here to help you with your SAME membership transition. Just email us where you are moving at samesatx@gmail.com and we will help getting your membership record changed and notifying the Post/Field Chapter in the area you are moving to.

We value you as a SAME member and even though you may be moving away from the San Antonio area we want you to continue to receive all the benefits of membership with our great Society.



MAKING A DIFFERENCE AS A MEMBER - SUPPORT OUR SAME FOUNDATION

The SAME Foundation supports programs that introduce youth to STEM, develop emerging leaders within our membership, and increase the number of veterans transitioning into the engineering and construction workforce. The Foundation also provides a secure and beneficial repository for charitable and other bequeaths from members of the Society and the public at large. See <https://www.same.org/foundation/> for details.

Our nation must have a continuous pipeline of quality engineering and STEM leaders to address the complex national security and infrastructure challenges. The SAME Foundation was specifically created to attack this need by leveraging the charitable capacity of our Society and of engineering and related professions.

Contributing to our SAME foundation is your opportunity to make a difference as a SAME professional!!!

We hope you will consider donating or encouraging your company/organization to donate to the SAME Foundation at <https://my.same.org/donate>.



Professional Development

Post Leadership Lab Graduation

We are thrilled to announce the graduation of 10 exceptional members from our 2025-2026 Leadership Lab! On March 4th, we gathered at Paesanos for a special ceremony to honor their hard work and dedication.

The evening was filled with inspiration, beginning with a warm welcome from SAME SA Post President Sarah Fowlkes. We were also honored to have SAME National VP Patrice Melancon as our guest speaker. Her words of encouragement resonated with our graduates, igniting their passion for their future leadership roles. Past Post President John Baker and Member Development Director James Kisiel also participated at the ceremony.

We are incredibly proud of this cohort and have no doubt they will go on to achieve great things. Congratulations to our graduates:

- **Alex Cases**
- **Donovan Cuellar**
- **Fernando de Luna**
- **Kelsey Edwards**
- **Danielle Genzer**
- **Krystal Le**
- **Wiatt Lewis**
- **Elisa Mercado**
- **Monica Noll**
- **Hadnan Rebolledo**



Professional Development

Post SBMRF and SAME JETC Stipend Winners

Congratulations to Post Young Professional member **Emma Kosub** and long-time member, past Board member and new SAME Fellow **Don Gleason**, who were selected as winners of our Post stipends to attend upcoming Post and SAME events. Emma was selected for the stipend to attend our May 6-7 Post Small Business Market Research Fair (SBMRF) and Don was selected for the stipend to attend the May 19-21 SAME Joint Engineer Training Conference (JETC) in Portland Oregon.



CREREDENTIALING ASSISTANCE PROGRAM (CAP) FACT SHEET

OVERVIEW

The Credentialing Assistance Program (CAP) provides financial support for professional development, education, licensure and certification preparation, exam testing, and mentoring initiatives to benefit members. SAME will reimburse a portion of exam sitting or registration fees and the costs of testing preparation and training materials upon confirmation of passing an exam.

WHO IS ELIGIBLE?

- This program is open to all SAME members, regardless of age.
- Applicants must be a SAME member for at least 12 months before applying.
- Applicants must have passed the respective examination and provide the required documentation with the application.
- The program covers financial assistance for exam sitting fees, registration fees, and study expenses (such as books or classes for the specific exam).

APPROVED A/E/C CREDENTIALS

- Certified Construction Manager (CCM)
- Certified Energy Manager (CEM)
- Certified Facility Manager (CFM)
- Certified Professional Services Marketer (CPSM)
- Design Build Institute of America (DBIA)
- Facility Management Professional (FMP)
- Leadership In Energy and Environmental Design (LEED)
- National Institute for Certification in Engineering Technologies (NICET)
- Professional Engineer (PE)
- Project Management Professional (PMP)
- Registered Architect (RA)

PROGRAM RESTRICTIONS

No single government official or employee, or private sector individual shall receive more than \$500 in assistance through the SAME CAP program. Individuals will remain eligible to receive reimbursement through other SAME programs.

"Credentials in the A/E/C profession are a commitment to continuous learning, which is critical in such a fast and complex industry that has responsibility of protecting public health and safety. I am grateful to work in an industry that has unlimited opportunities to learn, including many credentialing paths that add value to our work."

- Hayley Blaser, PE, PMP

For more information, visit
www.same.org/credentialing



CLICK ANY WHERE ON FLYER TO GO TO SAME WEB

CREDENTIALING REVIEW COURSE (CRC) PROGRAM SHEET

OVERVIEW

The Credentialing Review Course (CRC) is a valuable benefit that provides SAME members with free access to credentialing review courses to help prepare them for professional certification exam testing.

REQUIREMENTS

- Applicants must demonstrate active engagement or participation at the Post, Regional, or National level, and receive an endorsement from a Post President, Fellow, or National Board of Direction member
- Applicants must be active, paid SAME members for at least 12 months. Student memberships do not count toward this period
- The member must provide proof of registration for their respective exam within 30 days of receiving access to the review courses through PPI2Pass (for FE, PE, and ARE credentials). The exam should be scheduled within three- to nine-months of the award.
- Applicant must be willing to engage with a mentor from SAME (monthly at a minimum) throughout the time enrolled in the review course.
- Members selected for the CRC (or SAME Credentialing Assistance Program) will remain eligible to receive benefits from the other credentialing support program, no matter what order they apply to receive benefits.

ON-DEMAND CREDENTIALING REVIEW COURSES

The following professional licensure exams are available through the PPI2Pass:

- Fundamentals of Engineering Exam (All included)
- Professional Engineer Exam (All included)
- Architect Registration Examination (PcM, PM, PA, PPD, PDD, CE)

PROGRAM PARTICIPATION ACCOUNTABILITY

- Once an applicant is granted a seat in the CRC, they will have access for 12 months.
- Recipients will be assigned a mentor or they may request an established SAME member to serve as their mentor.
- Participants are to monitor overall progress based on the initial plan they establish with their mentor (and provide a schedule to the mentor to ensure the plan is being met).
- Participants will receive a warning if they fail to maintain the planned progress over the initial eight-week period.
- Should there be no improvement in the subsequent four weeks, the committee will assess the situation for additional action.

"Credentials are an important milestone for professionals in a highly regulated industry for safety and the public's welfare, such as the A/E/C sector. It means a commitment to deliver higher standard products and legally protects all the stakeholders involved."

- Justin Trexler Gattari, RA, LEED AP BD+C

For more information, visit www.same.org/credentialing



CLICK ANY WHERE ON FLYER TO GO TO SAME WEB

Post Continues Partnering Efforts

In its efforts to support the 2030 SAME Strategic Plan, the Post continues to look at partnering opportunities with other AEC-related professional organizations. On Mar 24, the Post held a joint meeting with the Texas Chapter's South Central Branch of the American Public Works Association (APWA). The meeting was hosted by the APWA Branch at the San Antonio Water System's headquarters building. The meeting focused on Pavement Repair Technology, which included a group of three (3) presentations:

- **Major Matt Jacobs** from the Air Force Installation and Mission Support Center briefed on the Air Force's new Rapid Runway Repair Process and the steps involved in the system.
- **Julio Gomez**, Public Works Director from Cibolo TX briefed on the City's Pavement Maintenance Program using pavement maintenance index rankings and scoring.
- **Joshua Mair**, Assistant City Manager from Converse TX, and **Comelio Castanon**, Public Works Director from Converse TX, briefed on the City's use of a Concrete Injection System to expedite corrections of ADA deficiencies in sidewalks and driveways.

More than 50 Post and APWA members attended the very successful meeting. Many thanks to **Amy Garza (APWA and Post member)** and **Post Programs Director John Enyeart** for taking the lead on organizing the meeting.

On Apr 10 we have the opportunity to participate again with Institute for Leadership in Capital Projects (I-LinCP) organization at their Fiesta Medal Exchange Party AEC networking event. Then on Sep 17, we will be hosting our annual joint meeting with the local CMAA Chapter on Professional Ethics. Don't miss out on these partnering opportunities!



Joshua Mair Briefs on Converse City's Concrete Injection Program



(from left) Joshua Mair, Julio Gomez, Maj Matt Jacobs with Post Director John Enyeart

STEM VOLUNTEER OPPORTUNITIES

Great Texas Air Show & Cyber Expo, May 1-3, JBSA-Randolph. There will be a STEM Cyber Day on May 2 for students. Volunteers are needed to help with the Post exhibit. See <https://www.ibsa.mil/GreatTexasAirshow/>
If interested in being a volunteer for these events, email heberbach@kmea.net and samesatx@gmail.com.

Get Involved!

Become a volunteer and make a difference.



Texas A&M Student Chapter Invitation

Our Texas A&M Student Chapter, which we co-host with the Houston-Galveston Post, is inviting Post members to participate in their **April 23 evening event which will feature a tour of Kyle Field at Texas A&M.**

If you will be in the area of Texas A&M on April 23 and our interested in participating, contact [John Baker](#), our Past Post President and Post Texas A&M Student Chapter Mentor.



Veterans Support

Upcoming Career Fairs for Transitioning Military, Veterans & Family Members

Here is a listing of upcoming career fairs in the region that transitioning service members, veterans and their family members may be interested in:

- Jul 26 - **DAV/Recruit Military – San Antonio Veterans Job Fair**
- Aug 3 - **Hiring Our Heroes – JBSA Career Summit**
- Aug 6 - **Hiring Our Heroes – JBSA Amplify & Career Summit (Military Spouses)**
- Aug 19 - **Hiring Our Heroes – Ft. Bliss Amplify & Career Summit (Military Spouses)**
- Nov (date TBD) - **Workforce Solutions Alamo – Red, White & You**



Goodfellow AFB* Fire Department Dorm Renovation Ribbon Cutting

(AF CE Weekly Email Mar 31, Story by Airman 1st Class Maria Mota, 17th TW Public Affairs)

GOODFELLOW AIR FORCE BASE, Texas -- The 17th Training Wing hosted a ribbon-cutting ceremony for the new and improved fire department dorms at Goodfellow Air Force Base, March 6.

The \$3.6 million project was bolstered by the Defense Economic Adjustment Assistance Grant, with the intent of improving the living and working conditions of Goodfellow's firefighters. The renovation took 18 months to complete a 2,890 square-foot addition to the Goodfellow Fire Department dormitories.

"The fire department is proof of what happens when a community and military come together," stated Col. Matthew Norton, 17th Training Wing commander. "They've increased our ability to not only respond to community events, but to what happens here regularly on this air force base."

Previously, the dorms consisted of four-man, open-bay sleeping quarters, with limited privacy, negatively impacting firefighters' living and working conditions. In addition, the previous heating, ventilation and air conditioning (HVAC) and plumbing system caused numerous issues, resulting in recurring maintenance costs increasing stress for firefighters outside their official responsibilities.

The renovations added eight new, private and modernized dorms. Granting firefighters personal space for proper rest during their 48-hour shifts. The new and improved sleeping environment allows firefighters to focus on carrying out their mission of aiding those in need at any time.



*** Goodfellow Air Force Base is Part of the Post's Concho Valley Field Chapter**

Upcoming Events

SAME & Other Activities

(see <https://www.same.org/san-antonio/events/> for Post Events)

(see <https://www.same.org/events-programs/> for SAME Events)

- **Post Meeting, Apr 23**, Old San Francisco Steakhouse - **SAVE THE DATE**
- **Great Texas Air Show & Cyber Expo, May 1-3**, JBSA-Randolph - see <https://www.jbsa.mil/GreatTexasAirshow/>
- **Post Scholarship Golf Tournament, May 5** - see [page 1](#) and https://www.eventleaf.com/e/2026_SmallBusinessMarketResearchFair_and_Golf
- **Post SB Market Research Fair, May 6-7** - see [page 1](#) and https://www.eventleaf.com/e/2026_SmallBusinessMarketResearchFair_and_Golf
- **Post YP Networking Event, May 14**, Idle Beer Hall and Brewery. email asilvas@broadbentinc.com for info
- **SAME JETC, May 19-21**, Portland Oregon - see <https://www.samejetc.org>
- **Post Meeting, Aug 20**, Old San Francisco Steakhouse - **SAVE THE DATE**
- **Joint CMAA-Post Meeting, Sep 17**, Old San Francisco Steakhouse - **Annual Professional Ethics meeting SAVE THE DATE**
- **Post Meeting, Oct 15**, Old San Francisco Steakhouse - **SAVE THE DATE**
- **Post Meeting, Nov 19**, Old San Francisco Steakhouse - **SAVE THE DATE**



Honors Gallery - Life Tribute

Post Earns Post Streamer

2025 Post Streamer Results

| 2025 Membership Growth | Post Name | Streamer Score | Post Size: | Distinction |
|------------------------|--------------------|----------------|--------------------------|-------------|
| Phoenix | Phoenix | 2625 | Medium - 131-300 members | Yes |
| Pikes Peak | Pikes Peak | 4400 | Large - 301+ members | |
| Pittsburgh | Pittsburgh | 2225 | Medium - 131-300 members | |
| Portland | Portland | 4650 | Medium - 131-300 members | Yes |
| Rhein-Main | Rhein-Main | 2075 | Medium - 131-300 members | |
| Robins AFB | Robins AFB | 2250 | Small - 10-130 members | |
| Rock Island | Rock Island | 3475 | Medium - 131-300 members | |
| Sacramento | Sacramento | 3925 | Large - 301+ members | Yes |
| San Antonio | San Antonio | 4025 | Large - 301+ members | |
| San Diego | San Diego | 4175 | Large - 301+ members | Yes |
| San Francisco | San Francisco | 2375 | Medium - 131-300 members | |
| Savannah | Savannah | 1700 | Large - 301+ members | |
| Scott Field | Scott Field | 1500 | Medium - 131-300 members | |
| Seattle | Seattle | 4175 | Large - 301+ members | |
| Space Coast | Space Coast | 4050 | Large - 301+ members | |
| St. Louis | St. Louis | 2125 | Medium - 131-300 members | |
| Tampa Bay | Tampa Bay | 4550 | Medium - 131-300 members | Yes |
| Tulsa | Tulsa | 2275 | Large - 301+ members | |
| United Kingdom | UK | 1275 | Small - 10-130 members | |
| Vicksburg | Vicksburg | 1475 | Medium - 131-300 members | Yes |
| Virginia Peninsula | Virginia Peninsula | 1575 | Medium - 131-300 members | |
| Washington DC | Washington DC | 5250 | Large - 301+ members | |
| Wichita Mountains | Wichita Mountains | 950 | Small - 10-130 members | Yes |



Thanks to our Post members and the leadership of our Post Board, our Post was able to earn the 2025 Post Streamer for its accomplishment in support of the SAME 2030 Strategic Plan and its 3 Goals to Drive Partnerships, Deliver Solutions and Develop People.

Although it was great that we earned the Streamer, for one of the few times in our history we did not earn Distinguished Post status. Like many of the other Posts, this was because we did not earn the 2025 Post Membership Streamer. Many changes occurred in 2025 and as a result we lost many individual and organization members. We need to look at this as a new challenge not a loss and be sure we retain the great members we have and recruit new AEC professionals for our great Society and Post!



Thank You From Post Endowed Scholarship Winner at TAMU

13 February, 2026

President, S.A.M.E. San Antonio Post
902 Kitty Hawk Rd
Ste 170, PMB 425
Universal City, TX 78148

Dear Sir,

Thank you for the opportunity to receive this scholarship, my family and I are so grateful for yours and the Society of American Military Engineers continued support for the Spring 2026 semester.

As a born and raised San Antonian and a Clark High School class of 2023 graduate, I am so thankful for a scholarship that comes from somewhere close to home. My involvement in the Boy Scouts of America as well as in my High School JROTC, led me to the Corps of Cadets at A&M.

I am a Junior in the class of 2027, and a proud member of Squadron 8. I am a Squad Leader for two freshmen and four sophomores this semester, meaning I am personally responsible for their development academically and physically. I am currently a member of Parsons Mounted Cavalry's Half Section Unit and I am an active member of the American Society of Civil Engineers.

I am a Civil Engineering Major currently enrolled in classes that continue to challenge and excite me daily. I am contracted with the United States Air Force and hope to pursue a career as either a remote pilot or civil engineer. The Corps of Cadets continuously facilitates my goals in military service through partnership with the Air Force. The Corps also helps me prepare for a life after service by allowing me to make connections with various companies and organizations.

I would love to meet you whenever you visit campus and personally thank you for the opportunities that S.A.M.E. is helping me pursue.

Thank you once again for this opportunity and your support.

Sincerely,

Benjamin Aulner '27
Squadron 8



2026 Post Board Members

| POSITION/NAME (E = Elected; A = Appointed) | PHONE | COMPANY |
|---|----------------|----------------------------------|
| <i>President (E)</i> <u>Sarah Fowlkes</u> | (512) 423-9089 | Jacobs |
| <i>Vice President (E)</i> <u>Cathy Bond-Cassidy</u> | (210) 683-0392 | Koman Holdings |
| <i>Treasurer (E)</i> <u>Sam Hutchins</u> , F.SAME | | Retired |
| <i>Secretary (A)</i> <u>Bridget Booth</u> | | Clark Construction Group |
| <i>Director, Partnerships, 2026-27 (E)</i> <u>Steve Holt</u> , F.SAME | (210) 391-0921 | MOCA Systems |
| <i>Director, Programs, 2026 (E)</i> <u>John Enyeart</u> , F.SAME | (210) 552-8368 | AFIMSC |
| <i>Director, Member Development, 2026-27 (E)</i> <u>James Kisiel</u> | (713) 823-7068 | Olsson |
| <i>Director, STEM & College Outreach, 2026 (E)</i> <u>Harold Eberbach</u> | (210) 995-0535 | KMEA |
| <i>Immediate Past President</i> <u>John Baker</u> | (210) 872-1705 | Lockward, Andrews & Newnam, Inc. |
| <i>Assistant Secretary (A)</i> | | |
| <i>Assistant Treasurer (A)</i> <u>Dick Kochanek</u> , F.SAME | (210) 884-9731 | Retired |
| <i>Director, Young Professionals (A)</i> <u>Andrew Silvas</u> | (210) 643-0544 | Broadbent & Associates |
| <i>Director, Fellows (A)</i> <u>David Pratt</u> , F.SAME | (210) 248-0909 | WSP |

Post Board Organization Chart

2026 Post Board Members

| POSITION/NAME (E = Elected; A = Appointed) | PHONE | COMPANY |
|---|----------------|-----------------------------------|
| <i>Director, Individual Members (A)</i> <u>Ed von Dran</u> | (210) 326-6991 | .Alpha Terra Engineering, Inc. |
| <i>Director, Sustaining Members (A)</i> <u>Michele Torres</u> | (703) 593-4407 | Health Facility Solutions Company |
| <i>Military Enlisted Affairs Liaison (A)</i> | | |
| <i>Director, Scholarships (A)</i> <u>Bonnie Hopke</u> , F.SAME | | Retired |
| <i>K-12/STEM Outreach Coordinator (A)</i> | | |
| <i>SAME E&C Camp Coordinator (A)</i> <u>Capt. Varsha Savalia</u> | (520) 313-1482 | USPHS |
| <i>College Outreach Coordinator (A)</i> <u>Terry Watkins</u> | (210)403-6329 | Jacobs |
| <i>Univ of Texas Student Chapter Mentor (A)</i> <u>Richard Mahn</u> | (512) 617-3103 | Freese and Nichols |
| <i>Texas A&M Student Chapter Mentor (A)</i> <u>John Baker</u> | (210) 872-1705 | Lockward, Andrews & Newnam, Inc. |
| <i>UT San Antonio Student Chapter Mentor (A)</i> <u>Terry Watkins</u> | (210) 403-6329 | Retired |
| <i>Small Business Coordinator (A)</i> <u>Chris Scott</u> | (210) 816-4793 | Health Facility Solutions Company |
| <i>Servicemember & Vet Support Coordinator (A)</i> <u>Mike Monreal</u> , F.SAME | (210) 845-5515 | Broadus & Associates |

Post Board Organization Chart

2026 Post Board Members

| POSITION/NAME (E = Elected; A = Appointed) | PHONE | EMAIL |
|---|----------------|-----------------------------------|
| <i>Servicemember & Vet Transition Coordinator (A)</i> <u>Markus Henneke</u> | (703) 853-0219 | IMEG Corp. |
| <i>Leadership Lab Co-Director (A)</i> <u>Shelby Gund</u> | (661) 619-6744 | AFCEC |
| <i>Leadership Lab Co-Director (A)</i> <u>Braden Deines</u> | (210) 202-0430 | Health Facility Solutions Company |
| <i>Website Manager/Newsletter Editor (A)</i> <u>Dick Kochanek</u> , F.SAME | (210) 884-9731 | Retired |
| <i>Social Media Coordinator (A)</i> | | |
| <i>Awards Committee Chair (A)</i> <u>Dick Kochanek</u> , F.SAME | (210) 884-9731 | Retired |
| <i>Golf Chair (A)</i> <u>Michael Beach</u> | (830) 816-5434 | Broadbent and Associates. |
| <i>Holiday Celebration Chair (A)</i> | | |



Post Board Organization Chart

Post Sustaining Members

as of April 1 Rosters

| Company/Agency | Website |
|--|---|
| # | |
| 3KEYS SERVICES GROUP LLC | http://www.3ksq.com/ |
| A | |
| Aerostar Environmental and Construction | http://www.bbch-llc.com |
| AG3 Group, LLC | https://ag3-group.com/ |
| Alpha Facilities Solutions, LLC | https://alphafacilities.com/ |
| Alpha Terra Engineering, Inc. | http://atei97.com |
| American Structurepoint / Inc. | www.structurepoint.com |
| Aptim Federal Services, LLC | https://www.aptim.com |
| AR6 Construction & Engineering, LLC | https://ar6ce.com/ |
| B | |
| Baer Engineering and Environmental Consulting Inc. | http://baereng.com |
| Bain Medina Bain, Inc. | https://bmbi.com/ |
| BB&E Consulting Engineers Professionals | https://bbande.com/ |
| Benham Design LLC | http://www.benham.com |
| Bhate | https://www.bhate.com |
| Black & Veatch Special Projects Corp. | https://www.bv.com |
| Blast Resource Group / LLC | www.blastresourcegroup.com |
| Bristol Industries | http://www.bristol-companies.com/services/engineering |
| Burns & McDonnell | http://www.burnsmcd.com |
| C | |
| CAPE | http://www.cape-inc.com |
| CCI Prime Contractors, LLC | https://www.cci-alliance.com/home/ |
| CDM Smith | https://www.cdmsmith.com/ |
| Chenega Corporation | https://www.chenega.com/ |
| Cherokee Nation Businesses | https://cherokeenationbusinesses.com/ |

Post Sustaining Members

as of April 1 Rosters

| | |
|-----------------------------------|---|
| Clearfield Construction / LLC | www.clearfieldconstruction.com |
| CRUX Solutions | www.cruzsolutions.com |
| Cushing Terrell (CTA Inc.) | www.cushingterrell.com |
| D | |
| DAWSON | www.dawsonohana.com |
| Design Build Consortium, LLC | https://www.manta.com/c/mb4ypf0/design-build-consortium-llc |
| Domestic Rail Solutions /Corp | https://drscontracting.com/ |
| E | |
| Eaton Corporation | https://www.eaton.com/us/en-us.html |
| ECC | https://www.ecc.net/ |
| EEA Consulting Engineers | https://eeace.com/ |
| F | |
| FLUOR | https://www.fluor.com/ |
| Flux Resources | https://www.workwithflux.com/ |
| FPM Remediations | https://www.fpm-remediations.com |
| Fugro | www.fugro.com |
| G | |
| Garver | https://www.garverusa.com/ |
| GFT / Inc | https://www.gftinc.com |
| H | |
| Hasen Global LLC | http://hasenglobal.com |
| Health Facility Solutions Company | https://hfscompany.com/ |
| HGL | www.hgl.com |
| Huitt-Zollars Inc | https://www.huitt-zollars.com/ |

Post Sustaining Members

as of April 1 Rosters

| | |
|------------------------------------|---|
| I | |
| IMEG Consultants Corp | https://www.imegcorp.com |
| International Consulting Engineers | https://www.icengineers.net |
| J | |
| Jacobs | https://www.jacobs.com |
| K | |
| Kleinfelder | https://www.kleinfelder.com |
| KMEA | https://www.kmea.net/ |
| KOMAN Holdings / LLC | www.komanholdings.com |
| L | |
| Los Alamos Tech Assoc, Inc. (LATA) | https://www.lata.com/ |
| M | |
| M2 Federal, Inc. | https://www.m2federal.com |
| Mason & Hanger | www.masonandhanger.com |
| Matrix Design Group | https://www.matrixdesigngroup.com |
| Merrick & Company | https://www.merrick.com/ |
| Michael Baker International | https://www.mbakertntl.com |
| MOCA Systems / Inc. | www.moca-pm.com |
| N | |
| Nightingale Corp | https://nightinggalechairs.com |
| North Wind Group | https://northwindgrp.com/ |

Post Sustaining Members

as of April 1 Rosters

| O | |
|--|--|
| OEC Process (Onion Equipment Co.) | https://www.oecprocess.com/ |
| Olsson | https://www.olsson.com |
| Oneida ESC Group | https://oescgroup.com/ |
| P | |
| P. Max Engineering | https://www.pmax-eng.com |
| Parsons | www.parsons.com |
| Phoenix General Contractors LLC | https://www.phoenix-gc.com/ |
| PIKA International | http://www.pikainc.com/ |
| Pond & Company | https://www.pondco.com |
| Protection Engineering Consultants | www.protection-consultants.com |
| Q | |
| QRI/Quaternary Resource Investigations | www.QRI.com |
| R | |
| RS&H | www.rsandh.com |
| RSP Architects, Ltd | https://www.rsparch.com |
| S | |
| SCIDEV, Ltd. | https://scidevlttd.com/ |
| SES Energy Services LLC | www.bbch-llc.com |
| Stanley Consultants Inc. | www.stanleyconsultants.com |
| Stantec, Inc. | https://www.stantec.com |
| Steelcase, Inc. | https://www.steelcase.com |
| Street Legal Industries, Inc. | http://www.slind.net |
| STV | www.stvinc.com |
| Surveying and Mapping/ LLC | www.sam.biz |
| T | |
| TB Industrial LLC | www.tb-industrial.com |
| Tepa Companies. | https://www.tepa.com/ |
| Terracon Consultants, Inc. | https://www.terracon.com |
| Tetra Tech, Inc. | https://www.tetrattech.com/ |

Post Sustaining Members

as of April 1 Rosters

| | |
|---------------------------------|---|
| T | |
| Tiger brain Engineering, Inc. | https://tigerbrain.com/ |
| Torres-Moore LLC | none listed |
| U | |
| V | |
| V2X | https://gov2x.com/ |
| Versar Global Solutions | https://www.versar.com |
| W | |
| Walter P. Moore | www.walterpmoore.com |
| Weston Solutions, Inc. | http://www.westonsolutions.com |
| Woolpert, Inc. | https://woolpert.com/ |
| Wright Construction Group / LLC | https://www.wrightconstructiongrp.com |
| Y | |

