

Pittsburgh Post: Small Business Workshop



SMALL BUSINESS FEATURES

Pittsburgh Post: Small Business Workshop



Small Business Workshop includes Western PA agency program outlooks and how to do business with these agencies.

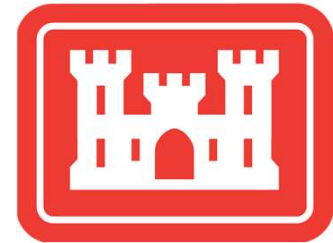
This workshop also features small business highlights in Western PA.

Tuesday, May 5, 2026

7:30 AM – 12:00 PM

ESWP

Agencies Represented



Upcoming Events



★ UPCOMING SAME EVENTS ★

- SAME Pittsburgh Post Annual Small Business Workshop - May 5, 2026
- SAME JETC Conference, Portland, OR - May 19-22, 2026
- SAME Pittsburgh Post, Montgomery Lock and Dam Tour – June 5, 2026
1:00 PM and 3:00 PM
- SAME Pittsburgh Post Annual Scholarship Golf Tournament – September 2026

More Information & Registration Details:

WWW.SAME.ORG/Pittsburgh/events



**Pittsburgh Post:
Small Business Workshop**

BLUE SPONSOR

HNTB

**Pittsburgh Post:
Small Business Workshop**

WHITE SPONSOR



TETRA TECH

Pittsburgh Post: Small Business Highlight



Advantus Engineers

advantus
engineers

SERVICES

- Building Commissioning
- Sustainability
- Project Management
- Construction Administration
- MEP and Energy Assessments

OTHER HIGHLIGHT AREA

- MWDBE
- Federal, state, and local government experience

Pittsburgh Post: Small Business Highlight



advantus
engineers

Alicia Avick PE, LEED AP BD+C, CxA

- President
- aavick@advantusengineers.com

Julie Barg PE

- Director of Environmental Services
- jbarg@advantusengineers.com

Angelica Ciranni

- LEED AP BD+C ID+C O+M, WELL AP, CEM
- Director of Sustainability
 - aciranni@advantusengineers.com

Pittsburgh Post: Small Business Highlight



e|a

Advantus Engineers

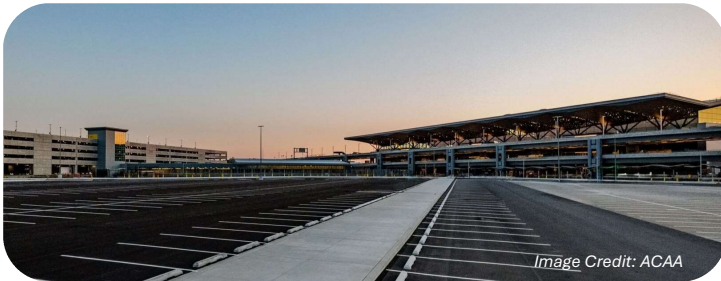


Image Credit: ACAA

PIT Terminal Modernization Program
Sustainability Consultant, Commissioning Agent, MEP Construction Admin

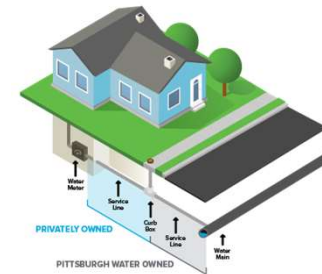


Image Credit: Pittsburgh Water

Pittsburgh Water Lead Service Line Replacement | Project Manager



Image Credit: BPG

FNB Financial Center | Commissioning Agent, Sustainability Consultant



Image Credit: SEA

Sports & Exhibition Authority | Sustainability and Engineering Consultant



Advanced Integration Group

Engineering Offices, UL508 Panel Shop and Bonded Warehouse
Located in Robinson Township - 10 miles West of Pittsburgh, PA

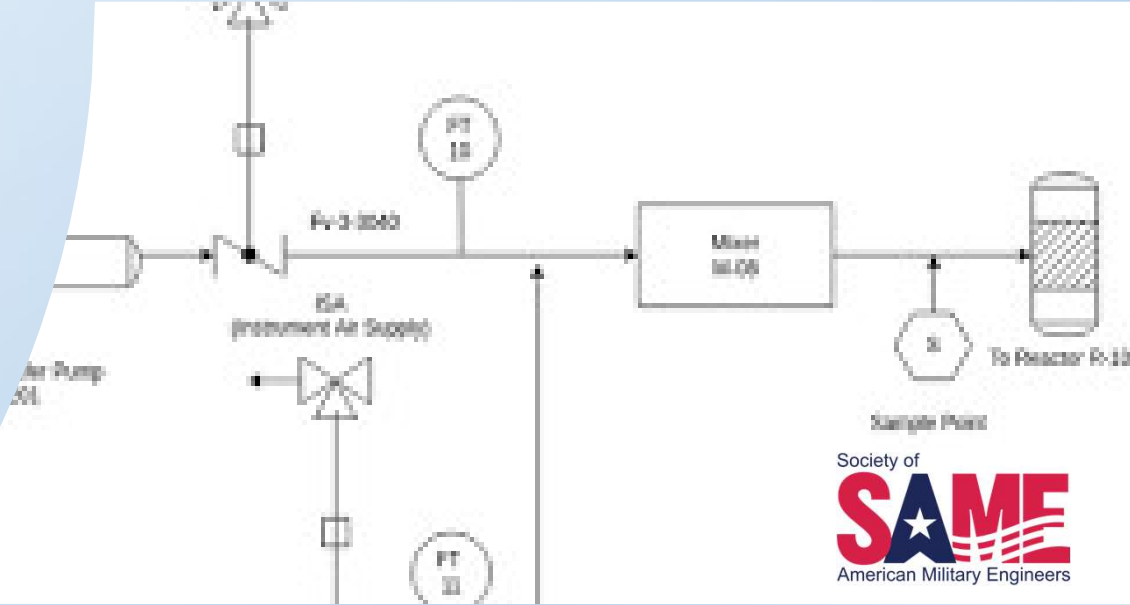
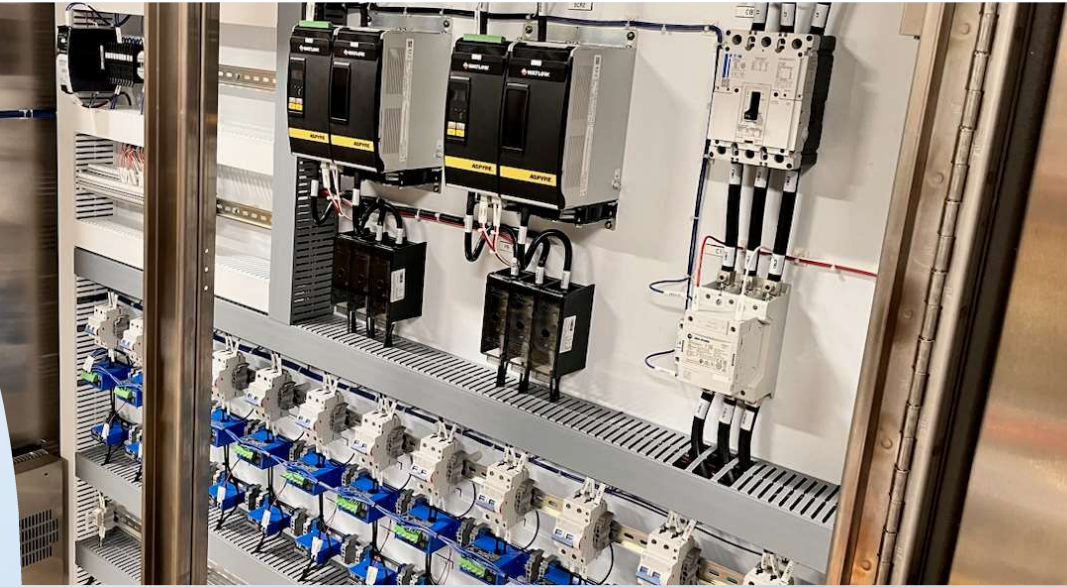
Certified WOSB Founded in 2000 - 26 Years of Experience providing
design, implementation, integration of Automated Control Solutions
along with Industrial Control Panels for Various Industries:

- | | |
|------------------|------------------------------------|
| Water/Wastewater | Transportation – Tunnels, L&D, LRT |
| Energy | Metals |
| Food | Manufacturing |
| OEM | Specialty Chemical |

Client-Centric Approach. We prioritize your needs above all else.
Our focus is on delivering solutions that align perfectly with your
desired outcome. Our Teams Collaborative Efforts deliver
excellence and reliability.

Tailored Control Systems. From Concept through
implementation, we are committed to delivering solutions
that work for you.

Reach out to Donna Chappel to start the conversation and discover
how we can transform your vision into reality. Cell: 412-913-0318
dchappel@aigcontrols.com





Advanced Integration Group

Engineering Firm Specializing in Controls, Instrumentation, and Automation along with a UL508 Panel Shop able to design and manufacture Custom Control Enclosures providing a complete turn-key solution

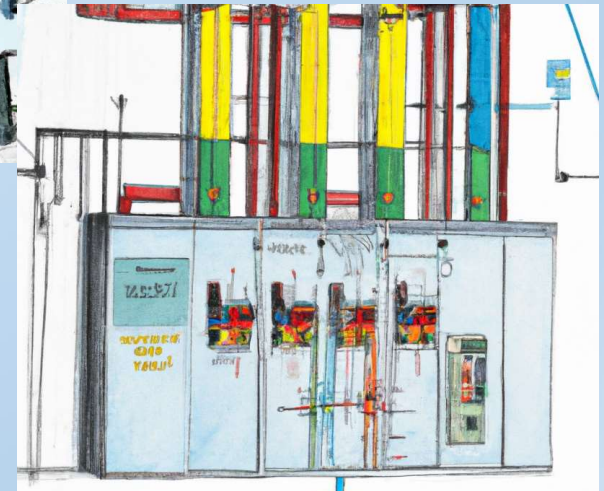
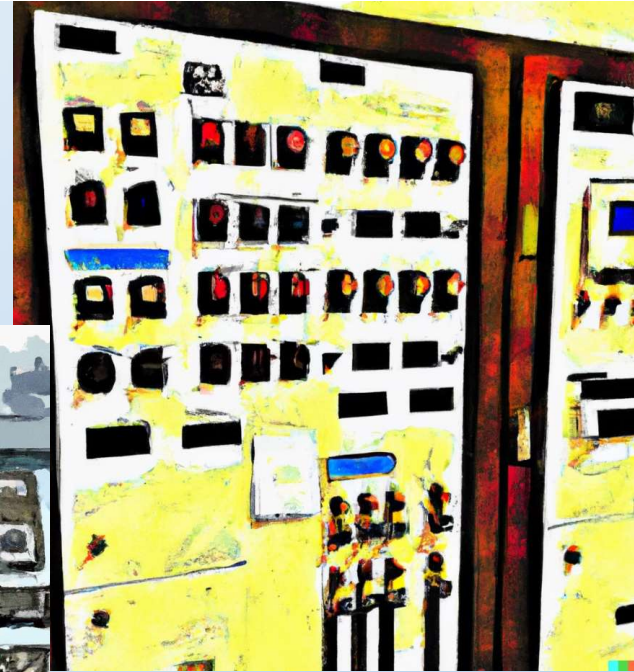
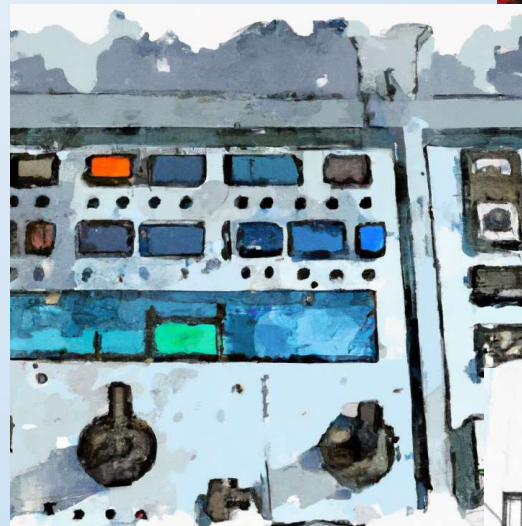
Projects Focused on Process Controls, SCADA and Instrumentation including PLC, DCS, HMI and PC based system solutions

Specialize in Control System Design for upgrades, expansions and new installations

Engineering Support Services, Construction Management, Commissioning, Inspection Services, Factory & Onsite Training & Testing, Service and Maintenance Agreements, AutoCAD Services remote and client sites.

Authorized Silver Integrator for Rockwell Automation-Allen Bradley, Siemens, Schneider, and Emerson/GE PLC's and HMI / SCADA Software as well as Intellution, Wonderware CIMPLICITY, and Genesis HMI / SCADA

PennDOT approved P5 Level 1 System Integrator for Traffic and Accommodations & Control



Society of
SAME
American Military Engineers



Advanced Integration Group

Present and Past Projects

CJ Mahan/US Army Corps of Engineers – Backchannel Hydraulic Controls Upgrades- Modifying existing programs enable Ethernet-IP comms and modify the PanelView for the Ethernet-IP comms.

C3M/Hitachi/PRT – ATS Microcab Rack Modifications @ ESD Station and testing by AIG Engineers utilizing Hitachi BTE, Fabrication of Dynamic and Static Tags for installation along tracks

Pitt Carrillo Steam Plant – Systems Integrator; maintenance along with all new equipment upgrade controls

GFT/ALCOSAN- Engineering Design of Oakdale Pump Station Instrumentation and Controls

HATCH ALCOSAN – Electrical/Controls CI/CM Melanchton Pump Station, Substation O-27 and A-48, ORT and Retained Electrical Engineering Support

WPC/ALCOSAN – Systems Integrator – Wet Weather Pump Station, Develop Loop Drawings, I/O, Functional Testing, and Start-up

Anniston Army Base WWTP – Remote and onsite support maintaining their control system since 2018- GE and Rockwell



Pittsburgh Post: Small Business Highlight



Collective Efforts, LLC



HIGHLIGHTS

- 26 years in business
- 20 employees

SERVICES

- Civil & Environmental Engineering
- Permitting
- Construction Administration/
Construction Inspection
- Public Involvement

Pittsburgh Post: Small Business Highlight



Collective Efforts, LLC



Coreen Casadei, P.E.
Principal

ccasadei@collectiveefforts.com



Tammi Halapin, P.E.
Principal

tammi@collectiveefforts.com



Erica DeLattre, P.E.
Senior Engineer

edelattre@collectiveefforts.com

Pittsburgh Post: Small Business Highlight



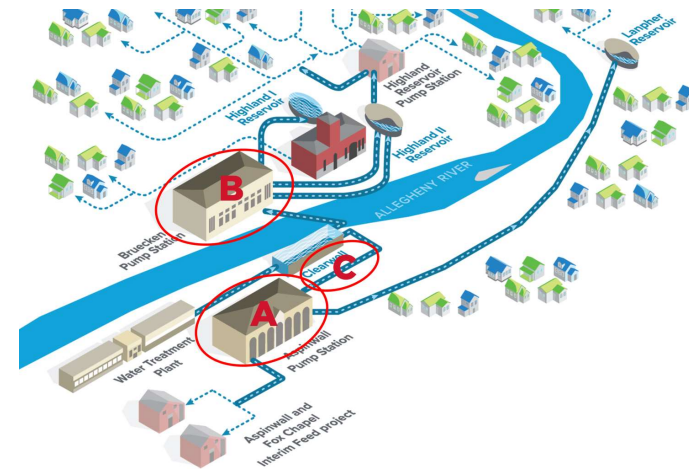
Collective Efforts, LLC



**Allegheny County Airport
Authority | Cargo 4
Permitting, Post-Construction
Stormwater Management
Plan, & Erosion and Sediment
Control Plan**



**ALCOSAN | Plant Expansion
Environmental Compliance &
Construction Inspection**



Pittsburgh Water | Water Reliability

- **ABC Project**
- **Lanpher Reservoir**
- **Highland Reservoir**
- **Highland II Reservoir**
- **Aspinwall Interim Feed**



Principal
Frederick Douglas,
MS CHE



**Senior Vice
President, Project
Manager**
Curtis Miller, PE,
BCEE



**Vice President,
Environmental and
Safety Manager**
Holly Douglas, MS,
MBA



**Structural,
Transportation, and
Construction Lead**
Aaron Wigfield, PE,
CBSI



**Water Resources
Lead**
Sumit Zanje, PhD,
EIT, ENV SP

www.cosmostechnologiesinc.com

Cosmos Overview

**Civil/Site Design
& Permitting**



**Water/
Wastewater
Engineering**



**Water
Resources
Engineering**



**Environmental and
Safety Management**



MEP Engineering



**Construction
Management/Inspection/
Administration**



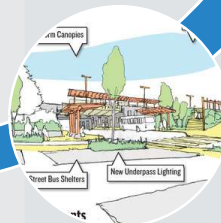
**Research and
Development**



**Structural
Engineering**



**Transportation
Engineering**



Example Project: Mellon Park – Pathway, Lighting & Entrance Improvements

Pittsburgh Park Conservancy (PPC), Pittsburgh, PA

Project Snapshot

- Comprehensive revitalization of key park entrances and circulation routes
- Corrects aging, dark, non-ADA compliant pathways and improves community connections
- Modernizes park lighting with energy-efficient, environmentally sensitive solutions

Cosmos' Role

- Led civil + electrical engineering
- Designed an ADA-compliant entrance at Fifth & Penn
- Realigned pathways at Fifth & Beechwood and along Fifth Ave. to establish shared-use connections
- Integrated reinforced seat wall, bike racks, benches, and trash receptacles at upgraded entrances
- Laid out LED luminaires with advanced optics for uniformity and safety
- Dark-Sky-aligned, warm CCT fixtures to reduce glare, light pollution, and blue-light impacts on the arboretum.



Artist Concept of Fifth & Penn Entrance



Proposed Lighting Layout



Cosmos Patented Wastewater Treatment System

- Marcellus Shale Wastewater Treatment
- Acid Mine Drainage Treatment

Win-Win Solutions: *recovery of rare earth metals, reduced site footprint, lower cost than traditional treatments*

Pittsburgh Post: Small Business Highlight



Goldbelt Operations Support Services, LLC



SERVICES

- General Contracting
- Construction Management
- Design-Build / Design-Bid-Build

OTHER HIGHLIGHT AREAS

- New Construction
- Renovations, Alterations & Modernizations
- LEED/Sustainable

Pittsburgh Post: Small Business Highlight



Goldbelt Operations Support Services, LLC



Sean Goldsmith, PE

- President
- sean.goldsmith@goldbeltfed.com
- 540-573-2390



Alicia Morgan

- Director of Marketing
- alicia.morgan@goldbeltfed.com
- 412-215-5648

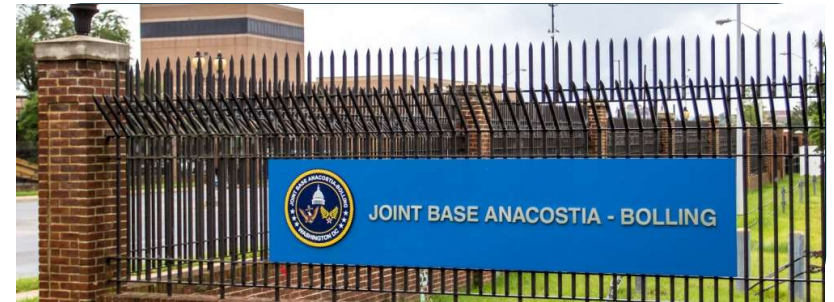
Pittsburgh Post: Small Business Highlight



Goldbelt Operations Support Services, LLC



New Fire Station | *Prime Contractor*



B72 HVAC Repairs & Dorm Reno | *Prime Contractor*

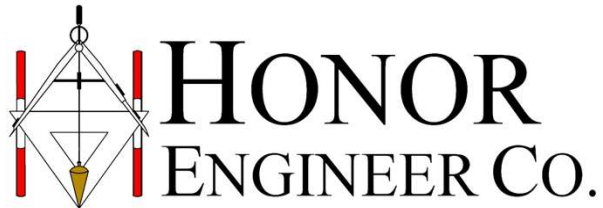


FCI Atlanta UNICOR Roof | *Prime Contractor*



Chiller Replacement | *Prime Contractor*

Pittsburgh Post: Small Business Highlight

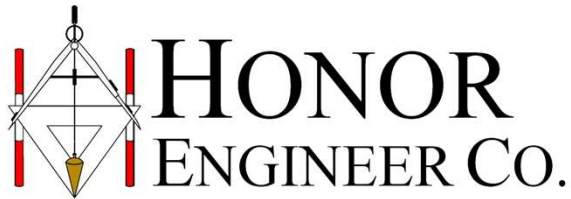


HONOR ENGINEER CO.

SERVICES

- **Site/Civil Engineering Services**
 - Site Design & Grading
 - Stormwater Management
 - NPDES Permitting
 - Water / Wastewater Utility Design
 - Wetland Delineation
- **Geospatial Services - Land Surveying**
 - 3D Laser Scans / Reality Capture
 - Aerial Imagery & LiDAR
 - Engineering & Topographic Surveys
 - Boundary Retracement Surveys
 - Construction Stake-Out

Pittsburgh Post: Small Business Highlight



**381 Mansfield Ave, Suite 115
Pittsburgh, PA 15220**



Douglas Allwein, PE, PLS

- President/CEO
- dallwein@honorengineer.com



Jeffrey Horneman, PLS, GISP

- Pittsburgh Survey Manager
- jhorneman@honorengineer.com



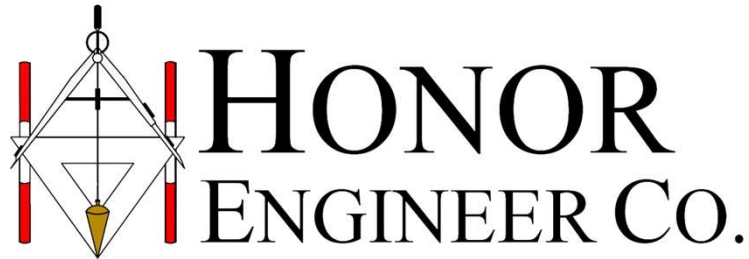
Glenn Miller, RLA, LEED AP

- Senior Project Manager – Pittsburgh
- gmler@honorengineer.com

Pittsburgh Post: Small Business Highlight



ALCOSAN CSO Bypass | *Civil - Sub*



Hampton VAMC Sewer Rehab | *Civil - Prime*



**DGS – Slippery Rock Electrical Upgrade
*Civil, Survey - Sub***



**Long Island National Cemetery CMES
*Civil - Prime***



**USACE Raystown Lake Boundary Services
*Survey - Prime***

Pittsburgh Post: Small Business Highlight



HRV Conformance Verification Associates, Inc



SERVICES

- Shop & Field Materials Inspection
- Construction Inspection/Coatings Inspection
- Construction Management Support Services
- Technical Consultation

OTHER HIGHLIGHT AREA

- 23 Years of Commitment to Sustainable Infrastructure
- 150+ Certified Inspectors Nationwide
Certifications: AWS CWI, AMPP, PSI, ACI, ASNT NDT
- Woman Owned Business

Pittsburgh Post: Small Business Highlight



HRV Conformance Verification Associates, Inc



Owner/H. Rochelle Stachel

- President
- hrstachel@hrvinc.com
- (412) 299-2000



Vice President/Kevin Chatary

- Business Development
- SAME – Leadership Development Program 2023-2024
- kchatary@hrvinc.com
- (412) 299-2000



Marketing/Richelle McGuire

- Marketing Specialist
- rmcguire@hrvinc.com
- (412) 299.2000

Pittsburgh Post: Small Business Highlight



HRV Conformance Verification Associates, Inc



Pennsylvania Department of Transportation
Roberto Clemente Bridge Rehabilitation | *QA Inspections, Prime*



Allegheny County Airport Authority
PIT Terminal Modernization Program | *QA Inspections, Subconsultant*



ALCOSAN
Wet Water Plant Expansion | *QA Inspections, Subconsultant*



Consolidated Rail Corporation
Point No Point Bridge Replacement | *QA Inspections, Subconsultant*

Pittsburgh Post: Small Business Highlight



A DBE CERTIFIED WOMAN BUSINESS ENTERPRISE FOUNDED IN 2018

OUR SERVICES

- CONSTRUCTION INSPECTION
- CONSTRUCTION MANAGEMENT
- ENVIRONMENTAL MONITORING
- CONTRACT ADMINISTRATION



**KJ CONSULTING &
ENVIRONMENTAL
SERVICES, LLC**

kj-consultants.com

Pittsburgh Post: Small Business Highlight



Stacy Ginkel

Owner & President

stacyginkel@kj-consultants.com

814-316-1735



Georgia Rosatti

Construction Services Manager -

Western Pennsylvania

georgiarosatti@kj-consultants.com

412-520-5789

Pittsburgh Post: Small Business Highlight



KJ CONSULTING & ENVIRONMENTAL SERVICES, LLC



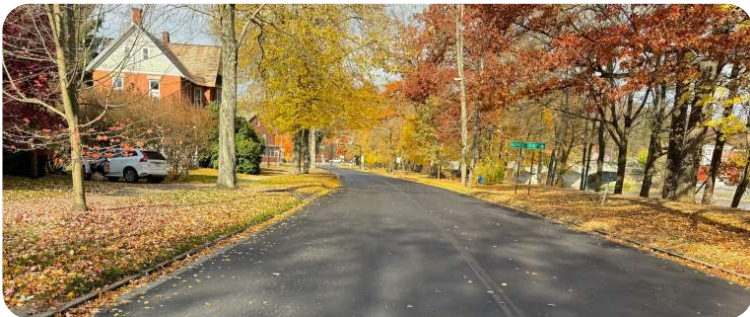
KJ CONSULTING &
ENVIRONMENTAL
SERVICES, LLC



SR 006
Cambridge
Springs Truss
Construction
Inspection



SR 79-A28
Crawford / Erie
Counties
Construction
Inspection



2024 Warren LFAR
Construction
Inspection



Pennsylvania
Turnpike MP 235
Construction
Inspection

Pittsburgh Post: Small Business Highlight



The Markosky Engineering Group, Inc.

CORE SERVICES



Civil
Engineering



Environmental



Construction
Services

KEY CLIENTS



Pittsburgh Post: Small Business Highlight



The Markosky Engineering Group, Inc.



David Hoglund, PE, CBSI

- Chief Executive Officer
- dhoglund@markosky.com



Ryan Rowles, MA, RPA

- Federal Program Manager
- rrowles@markosky.com



Apryle Davis

- Business Development Manager
- adavis@markosky.com

Ligonier, PA | Elizabethtown, PA | Steubenville, OH | Charleston, WV

 724.238.4138

Pittsburgh Post: Small Business Highlight



The Markosky Engineering Group, Inc.



USACE Magnolia Levee Dam | *Historic Structures Survey*



USACE Archaeological Survey for Section 202 | *Archaeology*



New Kensington Bridge Preservation | *Bridge Inspection*



PRT Light Rail | *MPT and Traffic Signals*

Pittsburgh Post: Small Business Highlight



MONALOH BASIN ENGINEERS

THE MEASURE OF QUALITY



SERVICES

- *Field Survey*
- *Right-of-Way Plan Preparation*
- *Geospatial Services*
- *Construction Management*
- *Construction Inspection*

OTHER HIGHLIGHTED AREAS

- *Mobile LiDAR*
- *Drone LiDAR*
- *Terrestrial Scanning*
- *CCTV*
- *MACP/PACP Inspection*

Pittsburgh Post: Small Business Highlight



MONALOH BASIN ENGINEERS

SAMPLE slide 2 (your
people / contact)



MASSY PAUL

- President/CEO
- massypaul@mbe-eng.com



RACHEL PAUL

- Vice President
- rpaul@mbe-eng.com



SARAH DUNN

- Director of Construction Management & Construction Inspection
- sdunn@mbe-eng.com

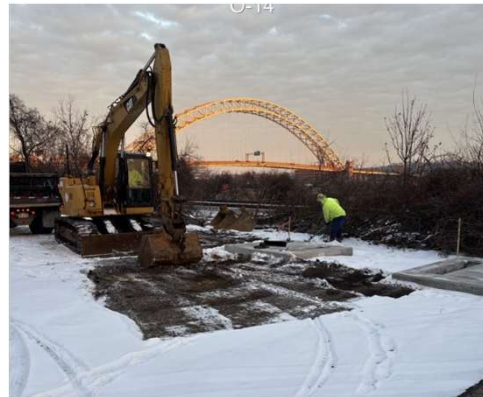
Pittsburgh Post: Small Business Highlight



MONALOH BASIN ENGINEERS

**Pittsburgh Water – Lead Line
Replacement Projects**
Construction Inspection

**ALCOSAN – Ohio River
Tunnel**
*Field Survey, As-Builts
Construction Inspection
(Upcoming)*



**PennDOT District 11-0
E04052 – SR 376
Commercial Street Bridge**
Field Survey

**DCNR Contract FDC-500-
817W – McKeever Facility
Renovation**
Field Survey and ROW