

SBMRF IS HERE - DON'T MISS OUT!!!

Our **Post Small Business Market Fair (SBMRF)** will be this week, **May 6-7**, at the **Embassy Suites Landmark 5615 Landmark Parkway, San Antonio TX 78249**, On-site registration will be available at the hotel. Don't miss out - over 300 participants have already signed up. This is your opportunity to network with other SAME professional and get updates on some of the latest DOD programs



WATCH FOR OUR JUNE POST MEETING

Our originally planned April **Post meeting** was **rescheduled to Thursday, Jun 25**, at the Old San Francisco Steakhouse. We are planning to have an **AFCEC speaker on Air Force Energy & Water Resiliency Initiatives**. If you have been following the news, you know there is a lot going on in these areas such as Enhanced Use Leases, Energy Assurance Leases, Portable Microreactors, etc. We will be opening reservations for the meeting after our Golf Tournament and SBMRF events wrap up. So **SAVE THE DATE** on your calendars!!!!



CONTENTS	Featured Events - Elections.....2	DOD Updates.....11	CONTENTS
	Board Positions.....2	Upcoming Events.....12	
	President's Corner.....4-3	Honor Gallery.....14-13	
	Membership.....4-6	Board Members.....14-16	
	Professional Development.....7-8	Sustaining Members.....17-21	
	College Outreach.....9-10	Sustaining Members.....22-26	

Post Board Positions

Post Volunteers Needed

We are looking for Post members interested in serving in an appointed Board position that is currently vacant. Appointed positions are filled by members that are appointed / re-appointed each year by the incoming Post President.

To serve in any Post Board position you **MUST BE** a SAME member in good standing and be affiliated with the San Antonio Post as listed on the [current Post membership rosters](#). You must keep your membership current.

We are seeking volunteers for the following position:

- **STEM Outreach Coordinator** - responsible for coordinating with local organizations to identify local STEM activities, helps with getting Post volunteers to support the activities, plans and executes the Post support of the activities.

The Post Board is organized as shown in the chart at <https://www.same.org/san-antonio/board-of-direction/>.

Appointed positions require a few hours of work per month. Our Post Board meetings are conducted virtually by Zoom (typically on the last Thursday of the month - we try not to hold a Board meeting in December). Board members are expected to attend at least 3 Board meetings in addition to the work required for their position.

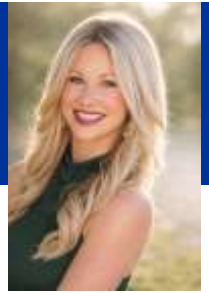
Appointed positions are a great stepping stones to start your journey into Post leadership!

If interested, email samesatx@gmail.com.





President's Corner



Hello Post Members & Friends,

As we move into May, I want to take a moment to reflect on the evolving landscape between the federal government and our industry- and the critical role SAME continues to play in strengthening that connection and collaboration. Over the last couple of months, we've seen increased momentum in federal initiatives aimed at modernizing infrastructure, accelerating innovation, and improving contract delivery systems. These efforts underscore a simple reality: meaningful progress depends on strong, transparent partnerships between government agencies and their industry partners. SAME remains committed to being the trusted bridge in this space and will continue to encourage open conversations. These necessary conversations are essential to ensure alignment, reduce friction, and should be used to identify opportunities where collaboration can thrive.

May will be a pivotal month for engagement (see listed events below). These events will bring clarity to the evolving federal priorities and are an opportunity to amplify the voice of industry stakeholders. The goal of these events is to not only inform but to actively shape the dialogue in ways that lead to practical, actionable outcomes. I want to emphasize the importance of your continued involvement in SAME and these upcoming events. Your engagement strengthens our collective impact and the progress made is a direct reflection of the expertise and commitment our industry has and shares with our government partners

As always, thank you for your ongoing support and dedication to advancing collaboration between the federal government and industry through SAME. Together, we are building a more effective, responsive, and innovative world.

Sarah Fowlkes
Post President

May Event Reminders:

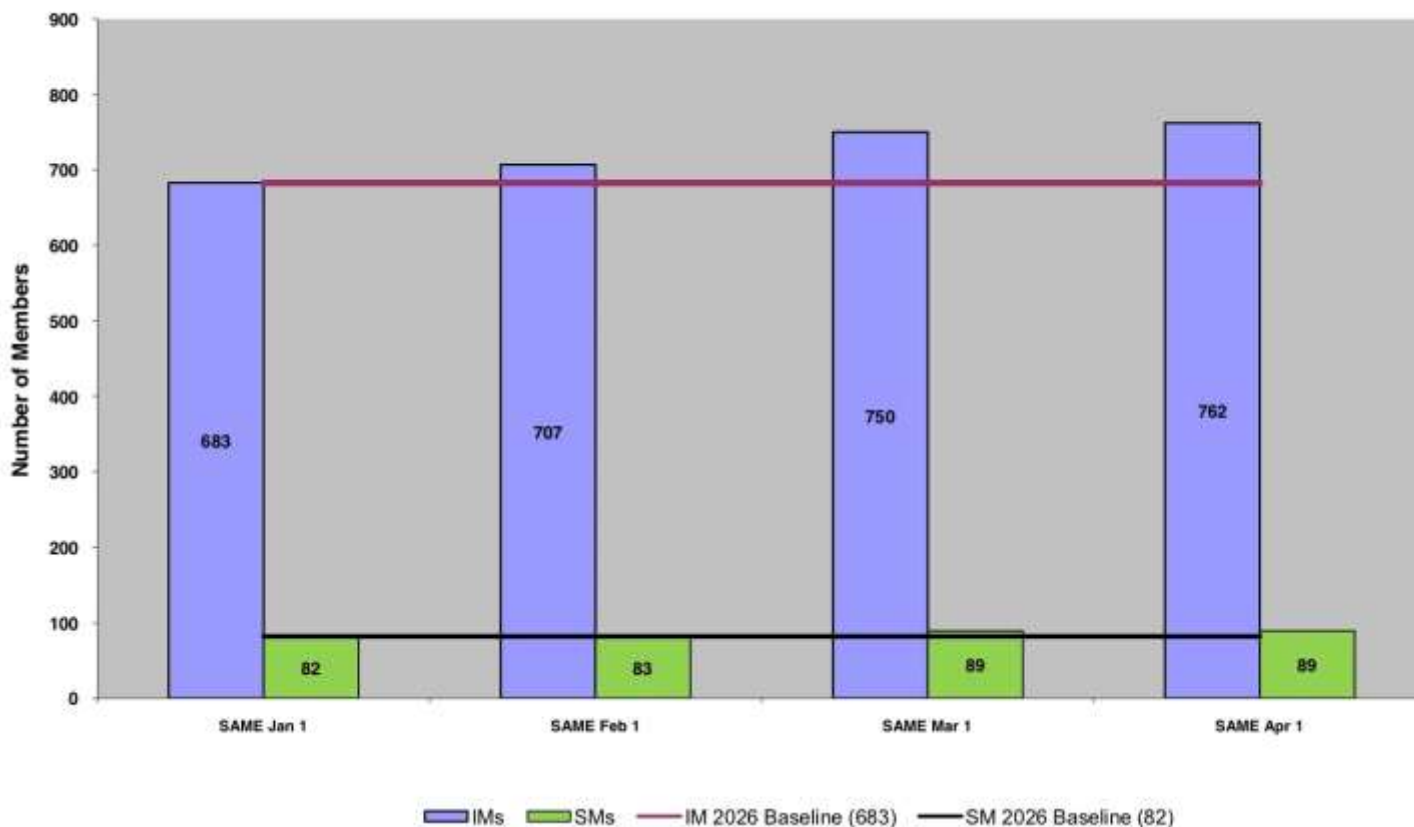
- The annual Small Business Market Research Fair (SBMRF) will be held on May 6 – 7th at the Embassy Landmark Hotel (registration will open soon!) and our Post Scholarship Fund Golf Tournament will occur the day prior on May 5th (Cinco De Mayo) at Canyon Springs Golf Course.
- Upcoming Young Professional (YP) Event will be held on May 14th, 2026, at Idle Beer Hall and Brewery from 4:30pm-6:30pm. To register, please email Andrew Silvas at asilvas@broadbentinc.com.
- **SAME JETC 2026**: Innovate Forward will be held on May 19-21, 2026, at the Oregon Convention Center in Portland, Oregon.
- **Missouri River JETS**: hosted by Omaha & GKC Posts in Omaha, Nebraska. May 26-29, 2026.



From the President's Desk

Membership

2026 San Antonio Post Membership
(Goal: Growth in IM plus SM Changes)



If you are a member, be sure to check your membership status!

Go to <https://www.same.org/san-antonio/membership-rosters-stats/> for Individual, Organization and Student Member Rosters

Learn more about our Post - click [HERE](#) for our New Member Handbook

**YOUR
MEMBERSHIP
MATTERS**

NEW MEMBERS

We would like to welcome our new members who joined or re-joined (in a new capacity) our Post from Apr 1 – May 1, 2026:

NAME	ORGANIZATION	TYPE
Michael Barba	Noblis	Non-Profit
Col Robert Barnes	US Air Force	Uniformed Member
Jessica Chevreaux	AECOM	Private Industry
Brian Cowan		Private Industry
Edward De La Garza	Triun LLC	Private Industry
Kevin Diefenderfer	Larson Design Group	Private Industry
Dustin Flower	Advanced Management Group	Private Industry
Christopher Ryan	BB&E Consulting Engineers	Private Industry
CMSgt Karla Macey	US Air Force	Government
Taylor McGehee	JBW Federal	Private Industry
Daniel Miller	SYNLawn	Private Industry
Ronald Schirato	Larson Design Group	Private Industry
Lt Col Daniel Shallcross	US Air Force	Government
Justin Solis		Private Industry
Ricardo Vera	Prairie Engineers P.C.	Private Industry
Byon Williams	SYNLawn	Private Industry

We would also like to welcome our new organizational members who joined or re-joined our Post from Apr 1 – May 1, 2026:

ORGANIZATION	TYPE
SYNLawn	Private Sector



THANKS FOR
JOINING US

RELOCATING???

Did you get a new job or assignment? Or maybe there's some other reason you are or soon will be relocating away from the San Antonio area? There are many important things to think or be concerned about when moving - home, utilities, school for the kids, changing of mail address, vehicle registration and more.

Those, of course, are everybody's focus areas as they prepare for the next big step in their career or personal lives.

As you work those things in your move, it's easy to forget about your SAME membership. Things like what happens to my membership or is there a Post/Field Chapter where I'm relocating to may not be on the top of your list to think about and rightfully so.

So we are here to help you with your SAME membership transition. Just email us where you are moving at samesatx@gmail.com and we will help getting your membership record changed and notifying the Post/Field Chapter in the area you are moving to.

We value you as a SAME member and even though you may be moving away from the San Antonio area we want you to continue to receive all the benefits of membership with our great Society.



MAKING A DIFFERENCE AS A MEMBER - SUPPORT OUR SAME FOUNDATION

The SAME Foundation supports programs that introduce youth to STEM, develop emerging leaders within our membership, and increase the number of veterans transitioning into the engineering and construction workforce. The Foundation also provides a secure and beneficial repository for charitable and other bequeaths from members of the Society and the public at large. See <https://www.same.org/foundation/> for details.

Our nation must have a continuous pipeline of quality engineering and STEM leaders to address the complex national security and infrastructure challenges. The SAME Foundation was specifically created to attack this need by leveraging the charitable capacity of our Society and of engineering and related professions.

Contributing to our SAME foundation is your opportunity to make a difference as a SAME professional!!!

We hope you will consider donating or encouraging your company/organization to donate to the SAME Foundation at <https://my.same.org/donate>.



CREREDENTIALING ASSISTANCE PROGRAM (CAP) FACT SHEET

OVERVIEW

The Credentialing Assistance Program (CAP) provides financial support for professional development, education, licensure and certification preparation, exam testing, and mentoring initiatives to benefit members. SAME will reimburse a portion of exam sitting or registration fees and the costs of testing preparation and training materials upon confirmation of passing an exam.

WHO IS ELIGIBLE?

- This program is open to all SAME members, regardless of age.
- Applicants must be a SAME member for at least 12 months before applying.
- Applicants must have passed the respective examination and provide the required documentation with the application.
- The program covers financial assistance for exam sitting fees, registration fees, and study expenses (such as books or classes for the specific exam).

APPROVED A/E/C CREDENTIALS

- Certified Construction Manager (CCM)
- Certified Energy Manager (CEM)
- Certified Facility Manager (CFM)
- Certified Professional Services Marketer (CPSM)
- Design Build Institute of America (DBIA)
- Facility Management Professional (FMP)
- Leadership In Energy and Environmental Design (LEED)
- National Institute for Certification in Engineering Technologies (NICET)
- Professional Engineer (PE)
- Project Management Professional (PMP)
- Registered Architect (RA)

PROGRAM RESTRICTIONS

No single government official or employee, or private sector individual shall receive more than \$500 in assistance through the SAME CAP program. Individuals will remain eligible to receive reimbursement through other SAME programs.

"Credentials in the A/E/C profession are a commitment to continuous learning, which is critical in such a fast and complex industry that has responsibility of protecting public health and safety. I am grateful to work in an industry that has unlimited opportunities to learn, including many credentialing paths that add value to our work."

- Hayley Blaser, PE, PMP

For more information, visit
www.same.org/credentialing



CLICK ANY WHERE ON FLYER TO GO TO SAME WEB

CREDENTIALING REVIEW COURSE (CRC) PROGRAM SHEET

OVERVIEW

The Credentialing Review Course (CRC) is a valuable benefit that provides SAME members with free access to credentialing review courses to help prepare them for professional certification exam testing.

REQUIREMENTS

- Applicants must demonstrate active engagement or participation at the Post, Regional, or National level, and receive an endorsement from a Post President, Fellow, or National Board of Direction member
- Applicants must be active, paid SAME members for at least 12 months. Student memberships do not count toward this period
- The member must provide proof of registration for their respective exam within 30 days of receiving access to the review courses through PPI2Pass (for FE, PE, and ARE credentials). The exam should be scheduled within three- to nine-months of the award.
- Applicant must be willing to engage with a mentor from SAME (monthly at a minimum) throughout the time enrolled in the review course.
- Members selected for the CRC (or SAME Credentialing Assistance Program) will remain eligible to receive benefits from the other credentialing support program, no matter what order they apply to receive benefits.

ON-DEMAND CREDENTIALING REVIEW COURSES

The following professional licensure exams are available through the PPI2Pass:

- Fundamentals of Engineering Exam (All included)
- Professional Engineer Exam (All included)
- Architect Registration Examination (PcM, PM, PA, PPD, PDD, CE)

PROGRAM PARTICIPATION ACCOUNTABILITY

- Once an applicant is granted a seat in the CRC, they will have access for 12 months.
- Recipients will be assigned a mentor or they may request an established SAME member to serve as their mentor.
- Participants are to monitor overall progress based on the initial plan they establish with their mentor (and provide a schedule to the mentor to ensure the plan is being met).
- Participants will receive a warning if they fail to maintain the planned progress over the initial eight-week period.
- Should there be no improvement in the subsequent four weeks, the committee will assess the situation for additional action.

"Credentials are an important milestone for professionals in a highly regulated industry for safety and the public's welfare, such as the A/E/C sector. It means a commitment to deliver higher standard products and legally protects all the stakeholders involved."

- Justin Trexler Gattari, RA, LEED AP BD+C



For more information, visit www.same.org/credentialing

CLICK ANY WHERE ON FLYER TO GO TO SAME WEB

College Outreach

Post Supports Texas State SkillsUSA Leadership & Skills Conference

Board member **Dick Kochanek, F.SAME**, judged in the **FACILITHON Competition** on Apr 10, at the **Texas State 2026 SkillsUSA Leadership & Skills Conference** in Corpus Christi. Thousands of post-secondary (community college) students participated at the conference in all types of competitions (culinary, welding, carpentry, robotics, auto/motorcycle mechanics, etc.). Nine community college students competed in the FACILITHON from 3 colleges – Dallas College El Centro Campus, Dallas College Cedar Valley Campus and Texas State Tech College in Harlingen.

The FACILITHON competition consists of three phases: (1) a multiple choice facility related quiz; (2) a role playing scenario involving a facility related issue; and (3) a facility management short-notice emergency issue. The competition exposes students to the possibility of pursuing careers in facility management. **Roland Garcia**, a facility manager for a local area hospital group, judged with Dick in the competition.



Conference Competition Examples



Post Supports SAME College Design Challenge

Board Members Dick Kochanek, F.SAME, Terry Watkins and Post member Steve Houser, F.SAME, helped judge in the SAME Undergraduate Innovation Design Challenge.

This competition, led by the SAME College Outreach COI, evaluates design projects that are being developed by student members as part of their degree curriculums and highlights the innovative thinking of the next generation of STEM professionals. Competing teams submit an abstract on their project and then a video presentation to further explain more details about their projects.

Eight college teams completed both phases of the competition. Three of the teams were selected as the winners and will receive cash awards for their team members. The winning projects included: a wearable navigation suit to restore independence; a standardized bus to help deploy experiments on satellites; and a thermo-fluid module for cooling subway stations.

It's a great experience to see what these future STEM professionals are working on in their college studies.

Local CMAA Chapter Opens College Scholarship Call

Our friends at the South Central Texas Chapter have opened their college scholarship program. You may know of a eligible student interested in the program. Go to <https://sctxcmaa.org/Scholarships> for all the details

2026 SCHOLARSHIP NOW OPEN

SCAN TO APPLY

CMAA
SOUTH CENTRAL TEXAS CHAPTER

Supporting the Next Generation of Construction Leaders

- High School Seniors
- Undergraduate Students

SCHOLARSHIP AWARDS

- Awards range from **\$1,000 - \$5,000**
- Designed for students pursuing Construction Management or related fields

APPLICATION TIMELINE

- Applications open all **Summer 2026**
- Award reviews conducted periodically throughout the summer

RECIPIENTS RECOGNIZED AT:
SCTXCMAA Annual Scholarship Clay Shooting Classic

WHO SHOULD APPLY?

- ✓ Strong academic performance
- ✓ Interest in construction, engineering, or related fields
- ✓ Involvement in extracurricular or STEM programs

APPLY NOW

SUBMIT APPLICATIONS ELECTRONICALLY
sctxcmaa.scholarship@gmail.com

LEARN MORE AT:
sctxcmaa.org/Scholarships

[in](#) [in](#)

DAF Announces Next Steps in Advanced Nuclear Power for Installations Initiative

(AF CE Weekly Email Apr 14, Story by Secretary of the Air Force Public Affairs)

ARLINGTON, Va. (AFNS) -- The Department of the Air Force, in conjunction with the Defense Innovation Unit, has selected three companies to potentially develop and operate a microreactor on a DAF installation, as part of the Advanced Nuclear Power for Installations initiative.

The service announced on April 8 that Buckley Space Force Base, Colorado, and Malmstrom Air Force Base, Montana, were the first two sites chosen for the ANPI initiative. Additionally, the service has selected **Joint Base San Antonio, Texas**, as the third potential location to site a nuclear microreactor under the ANPI initiative.

The selected companies have been paired with a DAF installation, which the service chose as part of its approach to energy resilience, focused on aligning mission requirements and site-specific characteristics.

- Buckley SFB, Colorado – Radiant Industries, Inc.
- Malmstrom AFB, Montana – Westinghouse Government Services
- Joint Base San Antonio, Texas – Antares Nuclear, Inc.

“The future of air and space dominance is powered by resilient energy,” said Michael Borders, assistant secretary of the Air Force for Energy, Installations and Environment. “By integrating advanced nuclear technology, we are not just keeping the lights on; we are guaranteeing that our most critical national security missions will never be held at risk by a power outage. This is a pivotal moment for the Department of the Air Force.”

The ANPI initiative seeks to have at least one advanced nuclear reactor operating on at least one DAF installation by 2030 or sooner. Next steps include siting and environmental analyses as part of the National Environmental Policy Act process.

This initiative is separate from the microreactor pilot at Eielson AFB, Alaska, which is a stand-alone effort focused on demonstrating the feasibility and operational benefits of a microreactor at a single installation.



Upcoming Events

SAME & Other Activities

(see <https://www.same.org/san-antonio/events/> for Post Events)

(see <https://www.same.org/events-programs/> for SAME Events)

- **Post SB Market Research Fair, May 6-7 - see [page 1](#)**
- **Post YP Networking Event, May 14, Idle Beer Hall and Brewery. email asilvas@broadbentinc.com for info**
- **SAME JETC, May 19-21, Portland Oregon - see <https://www.samejetc.org>**
- **Post Meeting, Jun 25, Old San Francisco Steakhouse - see [page 1](#) and SAVE THE DATE**
- **Post Meeting, Aug 20, Old San Francisco Steakhouse - SAVE THE DATE**
- **Joint CMAA-Post Meeting, Sep 17, Old San Francisco Steakhouse - Annual Professional Ethics meeting SAVE THE DATE**
- **Post Meeting, Oct 15, Old San Francisco Steakhouse - SAVE THE DATE**
- **Post Meeting, Nov 19, Old San Francisco Steakhouse - SAVE THE DATE**



Post Members Win SAME National Awards

Congratulations to **Post members Sam Barnett and Don Gleason, F.SAME**, who were recently selected as **SAME National Awards winners!!!**



Sam Barnett

President's Medal



Don Gleason

Leader Development Award



2026 Post Board Members

POSITION/NAME (E = Elected; A = Appointed)	PHONE	COMPANY
<i>President (E)</i> <u>Sarah Fowlkes</u>	(512) 423-9089	Jacobs
<i>Vice President (E)</i> <u>Cathy Bond-Cassidy</u>	(210) 683-0392	Koman Holdings
<i>Treasurer (E)</i> <u>Sam Hutchins</u> , F.SAME		Retired
<i>Secretary (A)</i> <u>Bridget Booth</u>		Clark Construction Group
<i>Director, Partnerships, 2026-27 (E)</i> <u>Steve Holt</u> , F.SAME	(210) 391-0921	MOCA Systems
<i>Director, Programs, 2026 (E)</i> <u>John Enyeart</u> , F.SAME	(210) 552-8368	AFIMSC
<i>Director, Member Development, 2026-27 (E)</i> <u>James Kisiel</u>	(713) 823-7068	Olsson
<i>Director, STEM & College Outreach, 2026 (E)</i> <u>Harold Eberbach</u>	(210) 995-0535	KMEA
<i>Immediate Past President</i> <u>John Baker</u>	(210) 872-1705	Lockward, Andrews & Newnam, Inc.
<i>Assistant Secretary (A)</i> <u>Danielle Genzer</u>	(210) 446-4348	Merrick
<i>Assistant Treasurer (A)</i> <u>Dick Kochanek</u> , F.SAME	(210) 884-9731	Retired
<i>Director, Young Professionals (A)</i> <u>Andrew Silvas</u>	(210) 643-0544	Broadbent & Associates
<i>Director, Fellows (A)</i> <u>David Pratt</u> , F.SAME	(210) 248-0909	WSP

Post Board Organization Chart

2026 Post Board Members

POSITION/NAME (E = Elected; A = Appointed)	PHONE	COMPANY
<i>Director, Individual Members (A)</i> <u>Ed von Dran</u>	(210) 326-6991	.Alpha Terra Engineering, Inc.
<i>Director, Sustaining Members (A)</i> <u>Michele Torres</u>	(703) 593-4407	Health Facility Solutions Company
<i>Military Enlisted Affairs Liaison (A)</i>		
<i>Director, Scholarships (A)</i> <u>Bonnie Hopke</u> , F.SAME		Retired
<i>K-12/STEM Outreach Coordinator (A)</i>		
<i>SAME E&C Camp Coordinator (A)</i> <u>Capt. Varsha Savalia</u>	(520) 313-1482	USPHS
<i>College Outreach Coordinator (A)</i> <u>Terry Watkins</u>	(210)403-6329	Jacobs
<i>Univ of Texas Student Chapter Mentor (A)</i> <u>Richard Mahn</u>	(512) 617-3103	Freese and Nichols
<i>Texas A&M Student Chapter Mentor (A)</i> <u>John Baker</u>	(210) 872-1705	Lockward, Andrews & Newnam, Inc.
<i>UT San Antonio Student Chapter Mentor (A)</i> <u>Terry Watkins</u>	(210) 403-6329	Retired
<i>Small Business Coordinator (A)</i> <u>Chris Scott</u>	(210) 816-4793	Health Facility Solutions Company
<i>Servicemember & Vet Support Coordinator (A)</i> <u>Mike Monreal</u> , F.SAME	(210) 845-5515	Broaddus & Associates

Post Board Organization Chart

2026 Post Board Members

POSITION/NAME (E = Elected; A = Appointed)	PHONE	EMAIL
<i>Servicemember & Vet Transition Coordinator (A)</i> <u>Markus Henneke</u>	(703) 853-0219	IMEG Corp.
<i>Leadership Lab Co-Director (A)</i> <u>Shelby Gund</u>	(661) 619-6744	AFCEC
<i>Leadership Lab Co-Director (A)</i> <u>Braden Deines</u>	(210) 202-0430	Health Facility Solutions Company
<i>Website Manager/Newsletter Editor (A)</i> <u>Dick Kochanek</u> , F.SAME	(210) 884-9731	Retired
<i>Social Media Coordinator (A)</i>		
<i>Awards Committee Chair (A)</i> <u>Dick Kochanek</u> , F.SAME	(210) 884-9731	Retired
<i>Golf Chair (A)</i> <u>Michael Beach</u>	(830) 816-5434	Broadbent and Associates.
<i>Holiday Celebration Chair (A)</i> <u>Kelsey Edwards</u>	(817) 648-9470	Bhate



Post Board Organization Chart

Post Sustaining Members

as of May 1 Rosters

Company/Agency	Website
#	
3KEYS SERVICES GROUP LLC	http://www.3ksq.com/
A	
Aerostar Environmental and Construction	http://www.bbch-llc.com
AG3 Group, LLC	https://ag3-group.com/
Alpha Facilities Solutions, LLC	https://alphafacilities.com/
Alpha Terra Engineering, Inc.	http://atei97.com
American Structurepoint / Inc.	www.structurepoint.com
Aptim Federal Services, LLC	https://www.aptim.com
AR6 Construction & Engineering, LLC	https://ar6ce.com/
B	
Baer Engineering and Environmental Consulting Inc.	http://baereng.com
Bain Medina Bain, Inc.	https://bmbi.com/
BB&E Consulting Engineers Professionals	https://bbande.com/
Benham Design LLC	http://www.benham.com
Bhate	https://www.bhate.com
Black & Veatch Special Projects Corp.	https://www.bv.com
Blast Resource Group / LLC	www.blastresourcegroup.com
Bristol Industries	http://www.bristol-companies.com/services/engineering
Burns & McDonnell	http://www.burnsmcd.com
C	
CAPE	http://www.cape-inc.com
CCI Prime Contractors, LLC	https://www.cci-alliance.com/home/
CDM Smith	https://www.cdmsmith.com/
Chenega Corporation	https://www.chenega.com/

Post Sustaining Members

as of May 1 Rosters

CRUX Solutions	www.cruzsolutions.com
Cushing Terrell (CTA Inc.)	www.cushingterrell.com
D	
DAWSON	www.dawsonohana.com
Design Build Consortium, LLC	https://www.manta.com/c/mb4ypf0/design-build-consortium-llc
E	
Eaton Corporation	https://www.eaton.com/us/en-us.html
ECC	https://www.ecc.net/
EEA Consulting Engineers	https://eeace.com/
F	
FLUOR	https://www.fluor.com/
Flux Resources	https://www.workwithflux.com/
FPM Remediations	https://www.fpm-remediations.com
G	
Garver	https://www.garverusa.com/
GFT / Inc	https://www.gftinc.com
H	
Hasen Global LLC	http://hasenglobal.com
Health Facility Solutions Company	https://hfscompany.com/
HGL	www.hgl.com
Huitt-Zollars Inc	https://www.huitt-zollars.com/

Post Sustaining Members

as of May 1 Rosters

I	
IMEG Consultants Corp	https://www.imegcorp.com
International Consulting Engineers	https://www.icengineers.net
J	
Jacobs	https://www.jacobs.com
K	
Kleinfelder	https://www.kleinfelder.com
KMEA	https://www.kmea.net/
KOMAN Holdings / LLC	www.komanholdings.com
L	
Los Alamos Tech Assoc, Inc. (LATA)	https://www.lata.com/
M	
M2 Federal, Inc.	https://www.m2federal.com
Mason & Hanger	www.masonandhanger.com
Matrix Design Group	https://www.matrixdesigngroup.com
Merrick & Company	https://www.merrick.com/
Michael Baker International	https://www.mbakertntl.com
MOCA Systems / Inc.	www.moca-pm.com
N	
North Wind Group	https://northwindgrp.com/

Post Sustaining Members

as of May 1 Rosters

O	
OEC Process (Onion Equipment Co.)	https://www.oecprocess.com/
Olsson	https://www.olsson.com
Oneida ESC Group	https://oescgroup.com/
P	
P. Max Engineering	https://www.pmax-eng.com
Parsons	www.parsons.com
Phoenix General Contractors LLC	https://www.phoenix-gc.com/
PIKA International	http://www.pikainc.com/
Pond & Company	https://www.pondco.com
Protection Engineering Consultants	www.protection-consultants.com
Q	
QRI/Quaternary Resource Investigations	www.QRI.com
R	
RS&H	www.rsandh.com
RSP Architects, Ltd	https://www.rsparch.com
S	
SCIDEV, Ltd.	https://scidev ltd.com/
SES Energy Services LLC	www.bbch-llc.com
Stanley Consultants Inc.	www.stanleyconsultants.com
Stantec, Inc.	https://www.stantec.com
Steelcase, Inc.	https://www.steelcase.com
Street Legal Industries, Inc.	http://www.slind.net
STV	www.stvinc.com
Surveying and Mapping/ LLC	www.sam.biz
SYNLawn	https://strictlygreengrass.com
T	
TB Industrial LLC	www.tb-industrial.com
Tepa Companies.	https://www.tepa.com/
Terracon Consultants, Inc.	https://www.terracon.com
Tetra Tech, Inc.	https://www.tetrattech.com/

Post Sustaining Members

as of May 1 Rosters

T	
Tiger brain Engineering, Inc.	https://tigerbrain.com/
Torres-Moore LLC	none listed
U	
V	
V2X	https://gov2x.com/
Versar Global Solutions	https://www.versar.com
W	
Walter P. Moore	www.walterpmoore.com
Weston Solutions, Inc.	http://www.westonsolutions.com
Woolpert, Inc.	https://woolpert.com/
Wright Construction Group / LLC	https://www.wrightconstructiongrp.com
Y	

