



Society of American Military Engineers  
**2026 Missouri River JETS**

# BETTER TOGETHER

*Advancing Readiness, Resilience, and Results*

*Hosted by Omaha and GKC Posts*

May 26 - 29, 2026 | CHI Health Center, Omaha, Nebraska





Society of American Military Engineers  
**2026 Missouri River JETS**

**BETTER TOGETHER**

*Advancing Readiness, Resilience, and Results*

## **Office of Health and Safety and Facilities Programs**

Overview, Common Water and Wastewater System Problems,  
and potential projects.

CAPT Kurt Kesteloot, PhD, PE, BCEE, CPH, ENV SP



# Office of Health and Safety

**Vision:** Healthy, safe, and welcoming parks for all

**Mission:** Protect and promote the health and safety of NPS employees and visitors.

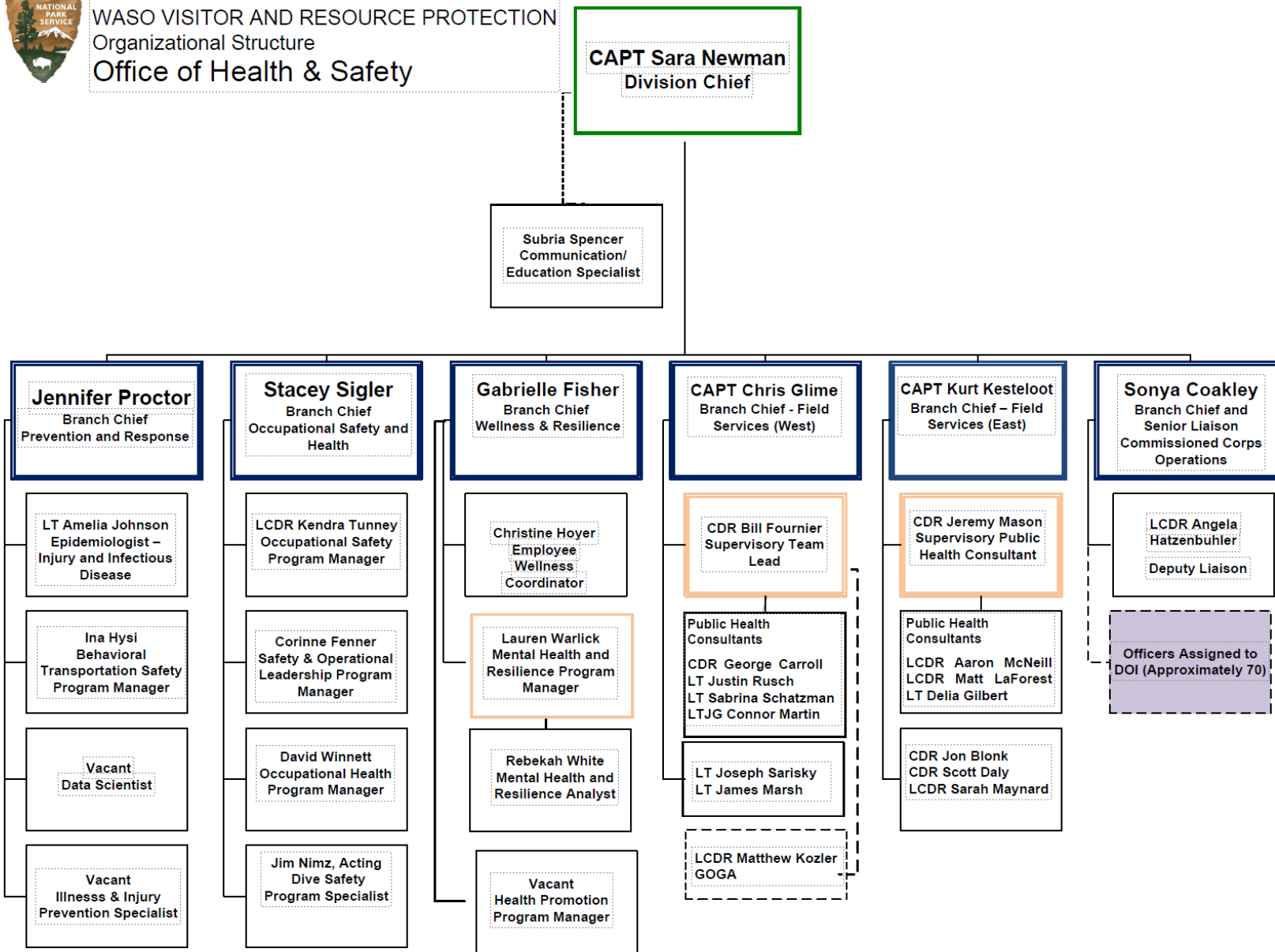
**Team:** 12 Civilian staff & 21 U.S. Public Health Service Commissioned Corps Officers

**Scope:** Oversees 5 key programs across all 12 DOI regions

**Background:** Formed by merging the Office of Public Health and Office of Risk Management



National Park Service  
 WASO VISITOR AND RESOURCE PROTECTION  
 Organizational Structure  
 Office of Health & Safety



# Public Health Protection/Field Services Branch



- Drinking Water
- Wastewater
- Food Safety
- Vector Borne/Zoonotic Diseases
- Recreational Water
- Backcountry Operations
- Daycares



# Field Services Branch



## Core Program – Water & Wastewater

The NPS owns and operates approximately 1,300 drinking water systems and 1600 wastewater systems.

- Water System Surveys
- Investigations
- Operator Training
- **Plan Review**
- EPA/States Compliance Monitoring

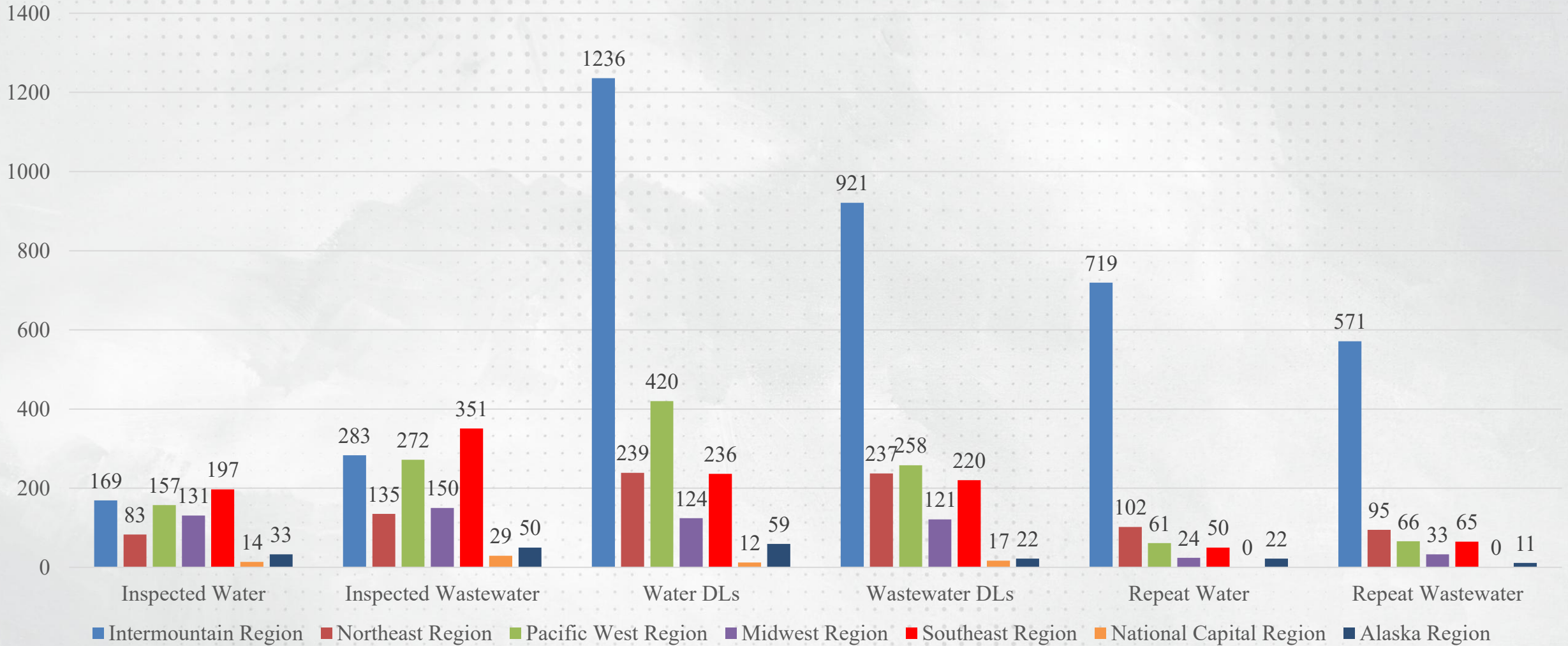






# FY25 Drinking Water and Wastewater Systems Inspection Summary

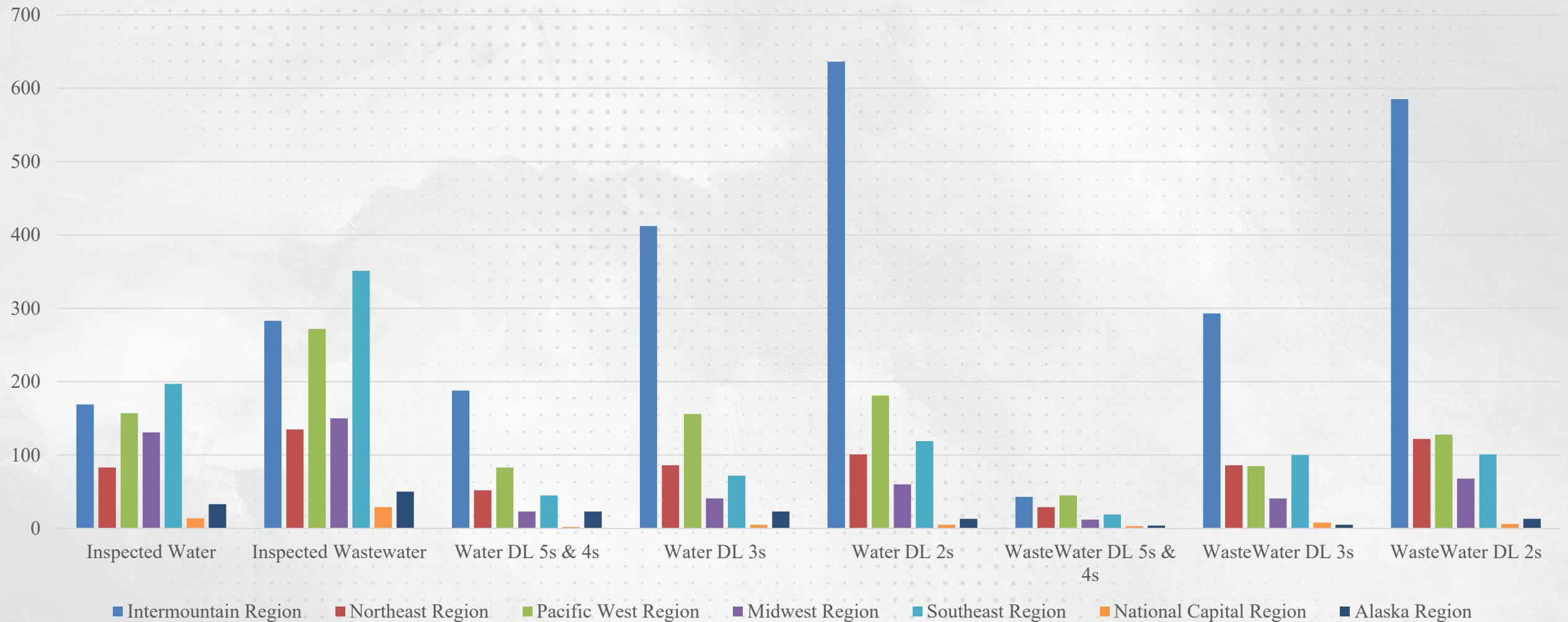
## FY 2025 Inspected Water and Wastewater by Region





# FY25 Deficiencies by Region and Levels

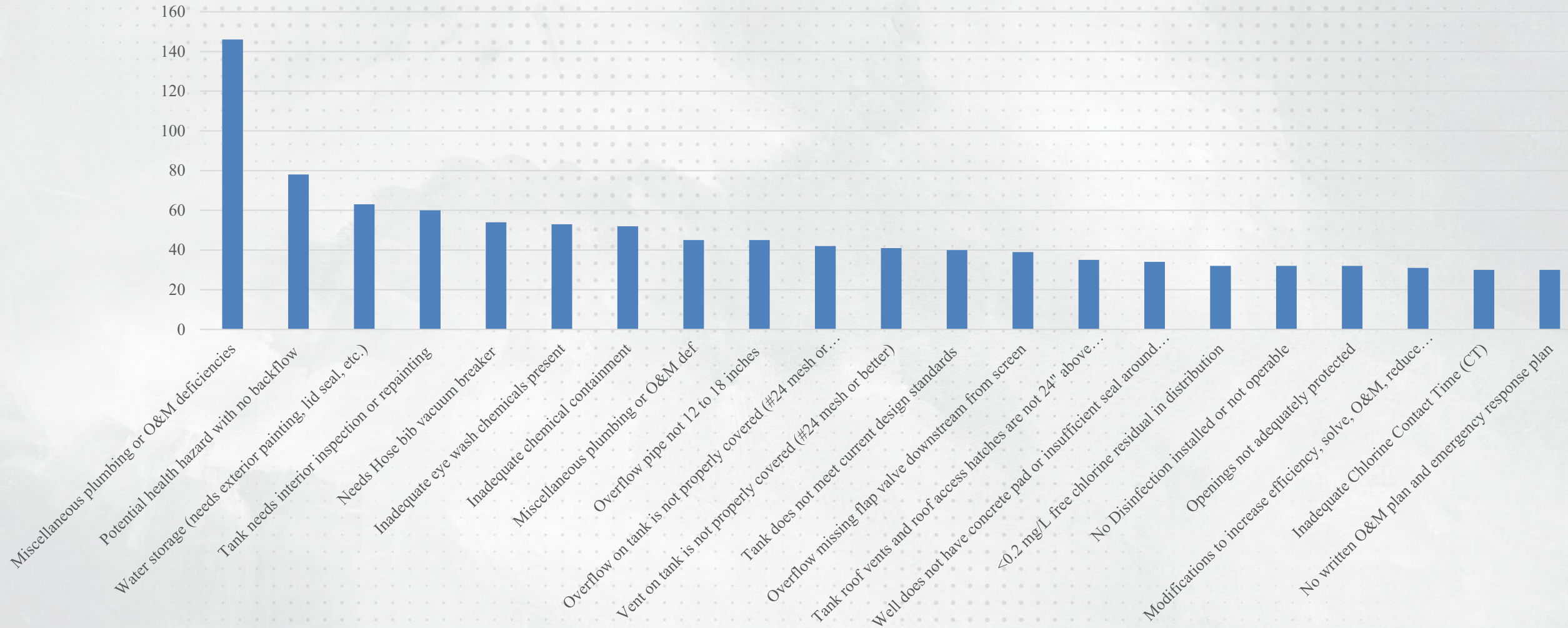
FY2025 Deficiencies by Region and Deficiency Levels



# FY25 All Drinking Water DLs Nationally top 21



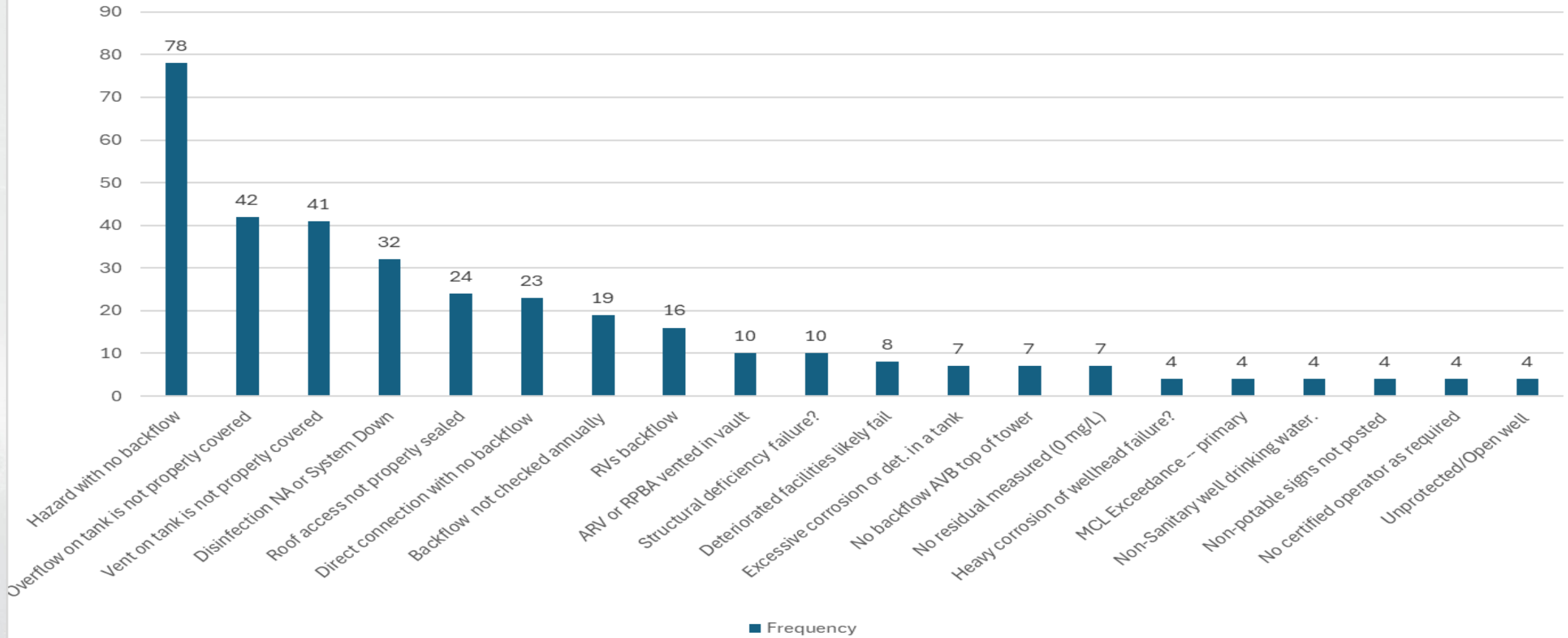
FY 2025 Top 45% of Drinking Water Deficiencies





# FY25 Drinking Water DLs 4s & 5s top 20

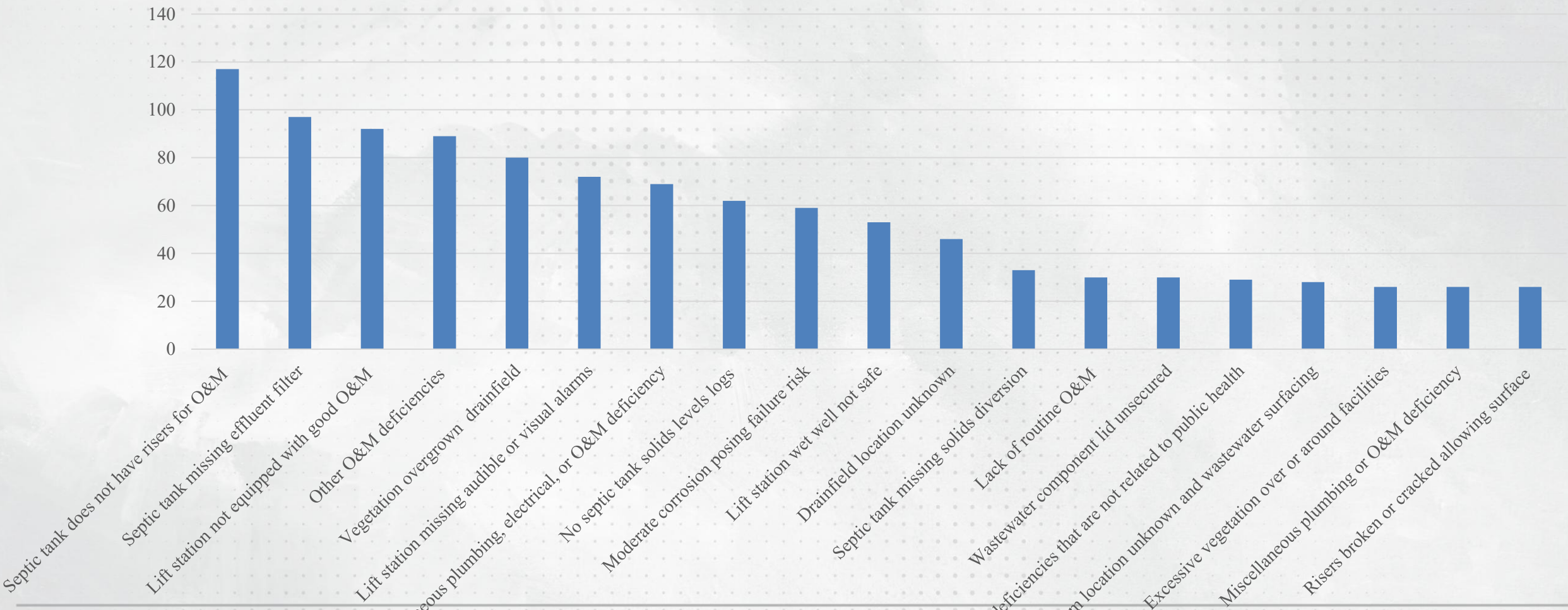
Chart FY25 Top ~86% DL4s and 5s





# FY25 Top 19 Wastewater DLs Nationally

FY25 Top 60% of Wastewater Deficiencies



# Rec Water Reports Completed

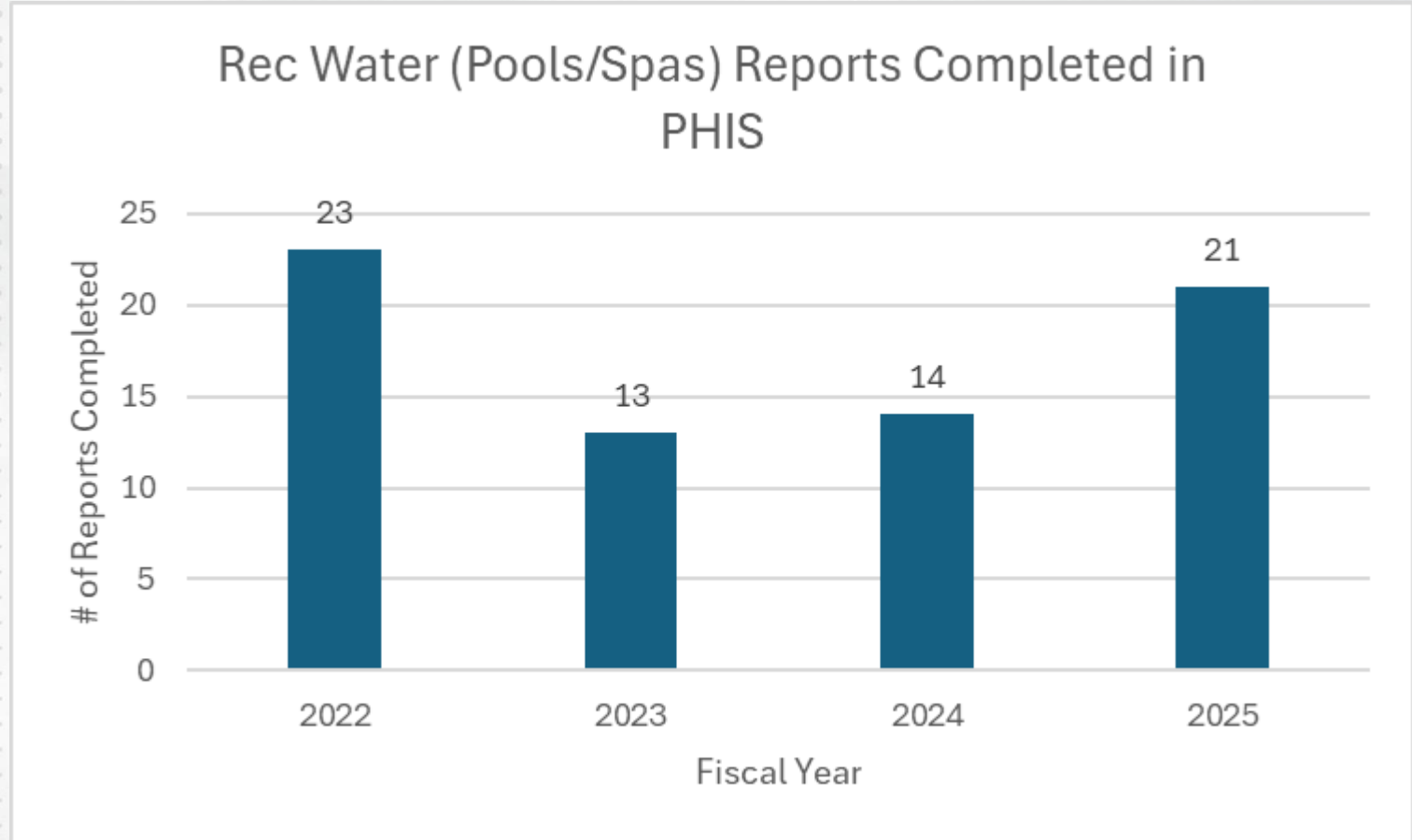
National Activity Headquartered in Washington, DC



## Comments:

- No data pre-2022  
(wasn't in PHIS then)

Completed Rec Water Reports	
FY	# of Reports
2022	23
2023	13
2024	14
2025	21



# Field Services Branch



## Core Program – Food Safety

There are over 600 food service facilities in the NPS, not including the hundreds of temporary facilities. Food service facilities of all types, both permanent and temporary, are evaluated by Field Services Branch.

- Food Inspections
- Staff Training
- **Plan Review**
- Investigations
- FDA Food Code Compliance Monitoring



# Field Services Branch



## Core Program – Food Safety

### Food (Permanent)

- Goal is to inspect full service food establishments 2x/year
- 1x/year for limited food service facilities (i.e. convenient stores, etc.)

### Food (Temporary)

- Complete TFE application (30 days before event)
- Food inspection by PHC if possible, otherwise rely on park staff (concessions specialists)

# PHIS Goals

National Activity Headquartered in Washington, DC



- Compliance Tool Rollout
- Daycare Inspection
- Backcountry Inspection Form Updates
- Design Review Module – track design review hours
- Geospatial Mapping
- Enhanced File Handling (photos in reports, etc.)
- Offline PHAs etc.
- Continue to improve accuracy of PHIS data



# Regional Director Bert Frost



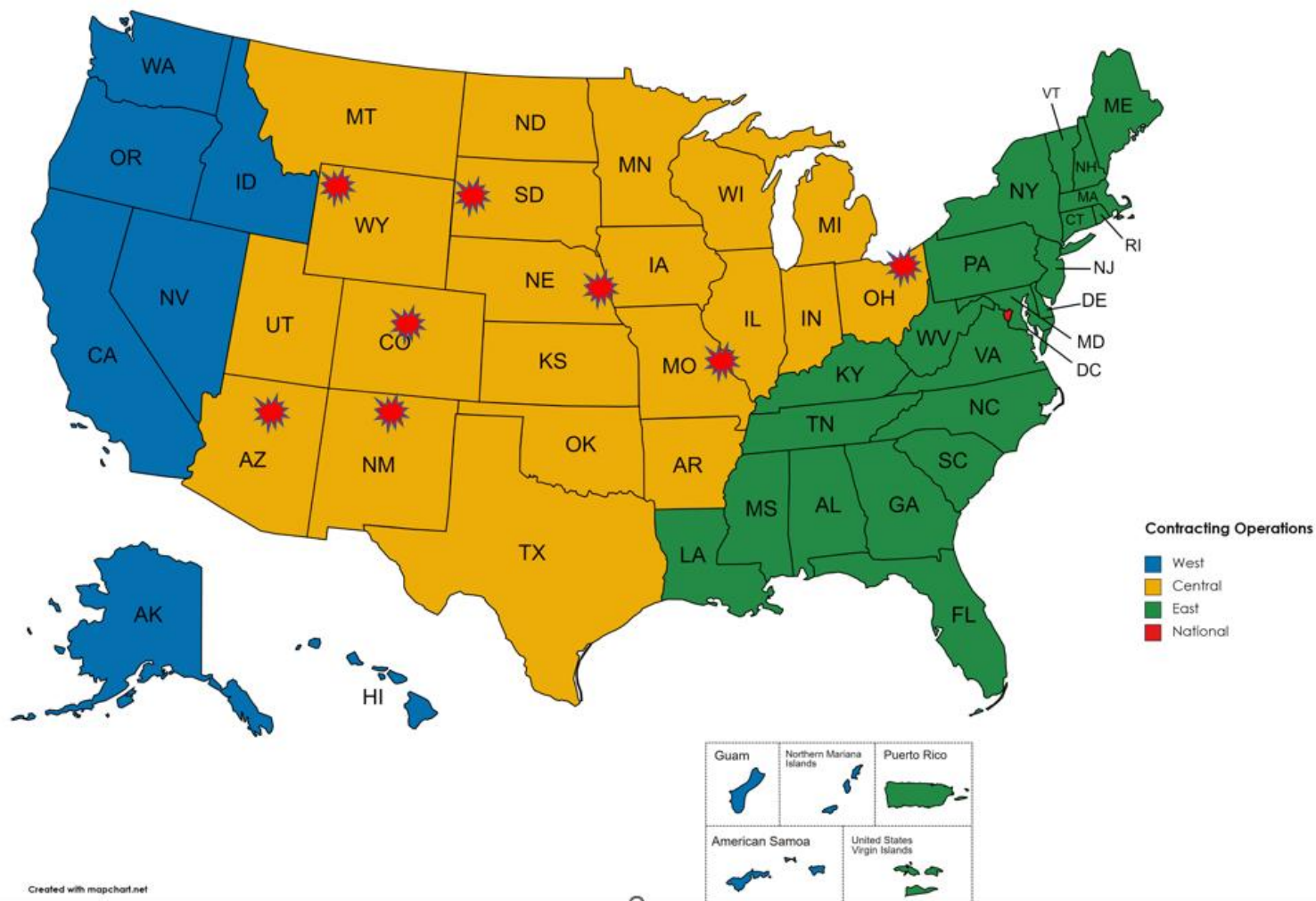
- Three (3) Deputy Regional Directors
- Six (6) Associate Regional Directors
- Four (4) Program Managers
  - Facility and Asset Division – Laura Rich Acosta
    - 9 Positions
  - Design and Construction Manager - Kevin Schluckebier
    - **15 Engineering Positions** (17 total)
  - Planning and Compliance Manager – James Lange
    - 12 Positions
  - Public Health – Kurt Kesteloot
    - 5 Engineering/Environmental Health Positions

Regions 3, 4, and 5 - Facilities, Planning and Infrastructure Branch



# NPS Contracting Operations Central

- NPS Contracting reorganized into East/Central/West teams with multiple buying offices



~ 21 States, 140+ park sites including Yellowstone, Grand Canyon, Glacier, Badlands, Hot Springs, Cuyahoga, Mount Rushmore, and many more

# QUESTIONS/DISCUSSION

