



U.S. ARMY

OMAHA DISTRICT LEADERSHIP



DIVISION CHIEFS



SHEILA NEWMAN
DEPUTY DISTRICT
ENGINEER



DAVE SOBCZYK
OPERATIONS
DIVISION



AMANDA SIMPSON
REAL ESTATE
DIVISION



TRACIE EVANS
CONTRACTING
DIVISION



JOHN BENSON
ENGINEERING
DIVISION



PATRICK HONAN
CONSTRUCTION
DIVISION

PLANNING, PROGRAMS, AND PROJECT MANAGEMENT BRANCH CHIEFS



ANDY TEMEYER
MILITARY (ACTING)



GREG JOHNSON
CIVIL (ACTING)



ED MALLUE
SPECIAL PROJECTS



TERESA REINIG
PROGRAMS



DREW MINERT
PLANNING



WILL HARLON
ENVIRONMENTAL



U.S. ARMY

OMAHA DISTRICT IDIQ OPPORTUNITIES

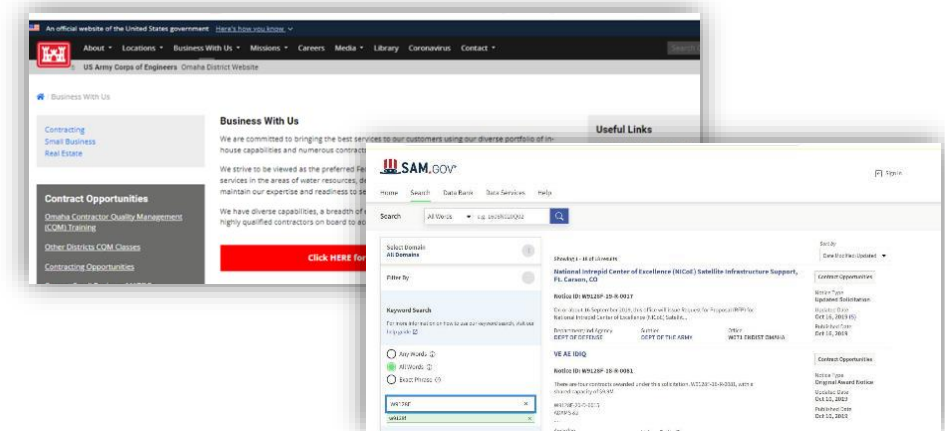


- **Active Contract Inventory:** 26 AE IDCs, 129 SATOCs, 37 MATOCs (\$15.3B Remaining Capacity)¹
- **Currently in Development:** 12 MATOCS, 5 SATOCS (\$9.8B in Planned Capacity)
- **IDIQ Opportunities for FY26 and FY27** (direct awards and past solicitation are not included):

| Lead Acquisition Branch/Division | NAICS/ PSC | Type | Geography | Project Title and Description | Anticipated Solicitation Date | Anticipated Dollar Value | Anticipated Set-Aside |
|----------------------------------|------------|-------|-------------------------------|---|-------------------------------|--------------------------|-----------------------|
| AST/Construction | 541330 | MATOC | NWD | Sentinel Construction Management Services (CMS) | FY26Q3 | \$249M | UNR |
| AST/PM-M | 236220 | MATOC | NWO | FSRM Military/Civil Construction DB/DBB | FY26Q4 | \$280M | SB |
| AST/PM-M | 238160 | MATOC | NWO Front Range | FSRM Roofing DB/DBB | FY26Q4 | \$99M | SB |
| AST/Eng. Division (ED) | 541330 | MATOC | Worldwide | SCIF/HEMP A-E Services | FY26Q4 | \$150M | UNR |
| AST/Eng. Division (ED) | 541330 | MATOC | CONUS, AK, HI, Outlying Areas | SCIF/HEMP A-E Services | FY27Q1 | \$99M | SB |
| AST/PM-S | 236220 | MATOC | CONUS, AK, HI, Outlying Areas | Rapid Disaster & Infrastructure (RDI) #3 | FY27Q2 | \$1.5B | SB |
| AST/PM-S | 236220 | MATOC | CONUS, OCONUS | Tenant Renovation in Secure Spaces (TRSS) #3 | FY28Q1 | \$95M | UNR |
| AST/PM-S | 562910 | SATOC | Worldwide | Rapid Response 7 | FY27Q2 | \$199M | UNR |

How to Find Opportunities:

- **Method 1:** <https://www.nwo.usace.army.mil/Business-With-Us> provides industry with an Opportunity Forecast. *Provided for Information only.*
- **Method 2:** Formal request for proposal and invitation for bids will be publicized on the **SAM.gov** website. For Omaha District, use Search Code: W9128F



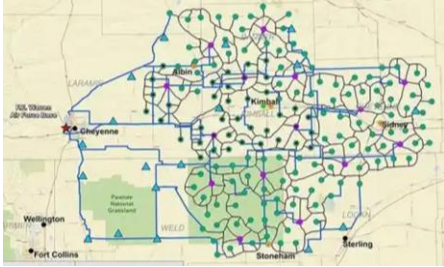
¹ – The capacity available is based on what has been obligated; Options (not yet awarded), Reserved Amounts, and Forecasted values are not part of the total utilization.



U.S. ARMY



OMAHA DISTRICT PROGRAM HIGHLIGHTS



FE Warren AFB GBSD/Sentinel Utility Corridor MATOC
FE Warren AFB, WY // NAICS: 237130 // Unrestricted Solicitation

\$1B+ (MATOC value) // ADV: FY26

Fort Harrison VAMC Central Utility Plant // Parking Garage (2 Projects)
Fort Harrison, MT // NAICS: 236220 // Unrestricted Solicitation

\$25M-\$100M (Each) // ADV: FY27 (MAR)



Levee Rehabilitation / Repairs (7 projects)
Missouri River & Omaha & Council Bluffs // NAICS: 237990 // Preferred Sources List (PSL)

\$5-30M each // ADV: FY26 thru FY27

Lower Brule North Element 2
Lower Brule, SD // NAICS: TBD // SB

\$10M-\$20M // ADV: FY27



Security Forces Ops Complex/Cons. Vehicle Mx Complex (2 projects)
Minot AFB, ND // NAICS: 236220 // Unrestricted Solicitation(s)

\$100M-\$250M (each) // ADV: EOFY26



U.S. ARMY



USACE Omaha District Consolidated Competed Opportunities List, FY26-27*



* Information provided is based on current forecasting only and is subject to change. Planned Task Orders and Direct Awards are not included in this list.

| Lead Acquisition Branch/Division | NAICS/PSC | Type | Geography | Project Title and Description | Anticipated Solicitation Date | Anticipated Dollar Value | Anticipated Set-Aside |
|----------------------------------|-----------|----------|-------------------------------|---|-------------------------------|------------------------------|-----------------------|
| AST/Construction | 541330 | MATOC | NWD | Sentinel Construction Management Services (CMS) | FY26Q3 | \$249M | UNR |
| AST/PM-M | 236220 | MATOC | NWO | FSRM-Military-Civil Construction DB/DBB | FY26Q4 | \$280M | SB |
| AST/PM-M | 238160 | MATOC | NWO Front Range | FSRM Roofing D-B/D-B-B | FY26Q4 | \$99M | SB |
| AST/Eng. Division (ED) | 541330 | MATOC | Worldwide | SCIF/HEMP A-E Services | FY26Q4 | \$150M | UNR |
| AST/Eng. Division (ED) | 541330 | MATOC | CONUS, AK, HI, Outlying Areas | SCIF/HEMP AE Services | FY27Q1 | \$99M | SB |
| AST/PM-S | 236220 | MATOC | CONUS, AK, HI, Outlying Areas | Rapid Disaster & Infrastructure (RDI) #3 | FY27Q1 | \$1.5B | SB |
| AST/PM-S | 562910 | SATOC | Worldwide | Rapid Response 7 | FY27Q2 | \$199M | UNR |
| Special Projects (PM-S) | 236220 | C | Ft Harrison , MT | Central Utility Plant at Ft Harrison VAMC | Advertised | \$25 - \$100M | UNR |
| Special Projects (PM-S) | 236220 | C | Prairie de Sac, Wisconsin | USDA ARS Dairy Forage Research Center 208,000 GSF of New Permanent Construction & 37,000 GSF Renovation | Advertised | \$25 - \$100M | UNR |
| Special Projects (PM-S) | 231720 | C | Kwajalein Atoll | Reagan Test Site Tank Repairs | Advertised | \$25M-50M | SB |
| Special Projects (PM-S) | 236220 | C | Creede, CO | Nelson Tunnel Remedial Action | FY27 | \$10M-40M | UNR |
| Special Projects (PM-S) | 231720 | C | Fort Hood, Texas | Fort Hood Tank Repairs | FY26 | \$5M-10M | SB |
| Special Projects (PM-S) | 231720 | C | Boise, ID | Orchard Combat Training Center Fueling System Repairs | FY26 | \$5M - \$15M | SB |
| Special Projects (PM-S) | 231720 | C | Eglin AFB, FL | Eglin AFB Coating Repairs | FY26 | \$5M-10M | SB |
| Special Projects (PM-S) | 231720 | C | Hampton, VA | Joint Base Langley-Eustis Dike Repairs | FY26 | \$10M-30M | SB |
| Special Projects (PM-S) | 236220 | C | Grand Junction, CO | DOE Field Service Center Renovation | FY26 Q2 | \$25M - \$50M | UNR |
| Special Projects (PM-S) | 231720 | C | Eareckson Air Station | Eareckson Air Station Tank Repairs | FY26 | \$10M-30M | SB |
| Special Projects (PM-S) | 231720 | C | Klamath Falls, OR | Kingsley Field Fueling System Upgrades | FY26 | \$10M-30M | UNR |
| Military (PM-M) | 236220 | TBD | Buckley SFB, CO | Repair Dorm B28 | FY27Q2/3 | \$5 - \$25M | TBD |
| Military (PM-M) | TBD | C | Cavalier SFS, ND | Cooling Water System B830 | FY27Q3/4 | \$25-100M | TBD |
| Military (PM-M) | 236220 | C | Ellsworth AFB, SD | B-21 Alert Facility | Advertised | \$25-100M | UNR |
| Military (PM-M) | 236220 | C | Ellsworth AFB, SD | B-21 W. Alert Apron Environmental Protection Shelters (EPS) | Advertised | \$25-100M | UNR |
| Military (PM-M) | 236220 | C | Ellsworth AFB, SD | B-21 60 Row EPS – South | Advertised | \$25-100M | UNR |
| Military (PM-M) | 236220 | C | Ellsworth AFB, SD | B-21 Munitions Maintenance Facility (MUNS Mx) | Advertised | \$25-100M | UNR |
| Military (PM-M) | 236220 | C | Ellsworth AFB, SD | B-21 80 Row EPS | Advertised | \$25-100M | UNR |
| Military (PM-M) | 236220 | C | Ellsworth AFB, SD | Two Munitions Storage Igloos | FY27Q1 | \$5-25M | SB |
| Military (PM-M) | 237310 | MATOC | Ellsworth AFB, SD | Misc Runway Repairs | FY27Q3 | \$5-25M | SB |
| Military (PM-M) | 236220 | C | FE Warren AFB, WY | GBSD/Sentinel Combined Maintenance Facility (CMF) | Advertised | \$100-250M | UNR |
| Military (PM-M) | 236220 | C | FE Warren AFB, WY | GBSD/Sentinel Integrated Training Center (ITC) | Advertised | \$25-100M | UNR |
| Military (PM-M) | 237130 | MATOC | FE Warren AFB, WY | GBSD/Sentinel Utility Corridor | Advertised | \$500M+ | UNR |
| Military (PM-M) | 236220 | C | FE Warren AFB, WY | GBSD/Sentinel Ops Group Facility | FY27Q4 | \$100-250M | UNR |
| Military (PM-M) | 236220 | C | Ft Carson, CO | SOF Group Headquarters Building | FY27Q4 | \$25 - \$100M | UNR |
| Military (PM-M) | 236220 | C | Ft Carson, CO | Replace Ambulatory Care Center (ACC) | FY26Q4 | \$25 - \$100M | UNR |
| Military (PM-M) | 236220 | C | Ft Carson, CO | Butts Ambulatory Care Center (ACC) | FY27Q4 | \$25 - \$100M | UNR |
| Military (PM-M) | 236220 | C | Ft Carson, CO | DLA General Purpose Warehouse | TBD | \$25 - \$100M | UNR |
| Military (PM-M) | Varies | MATOC, C | Ft Carson, CO | Various Fort Carson FSRM (Multiple) | FY26Q2-4 | \$1-5M (each), \$50M total | SB |
| Military (PM-M) | 236220 | TBD | Ft Carson, CO | Repair Barracks, B1363 (Rolling Pins) | FY27Q1 | \$5-25M | TBD |
| Military (PM-M) | 236220 | TBD | Ft Carson, CO | CNS, TEMP SCIF | FY27Q1 | \$1 - \$5M | SB |
| Military (PM-M) | 237130 | MATOC | Malmstrom AFB, MT | FY29 GBSD/Sentinel Utility Corridor | TBD | \$500M+ | UNR |
| Military (PM-M) | 236220 | C | Minot AFB, ND | GBSD/Sentinel Security Forces Ops Complex | FY26Q4 | \$100-250M | UNR |
| Military (PM-M) | 236220 | C | Minot AFB, ND | GBSD/Sentinel Consolidated Vehicle Maintenance Complex | FY26Q4 | \$100-250M | UNR |
| Military (PM-M) | TBD | C | Minot AFB, ND | GBSD/Sentinel Athletic Complex | FY26Q4 | \$1-10M | SB |
| Military (PM-M) | 236220 | MATOC, C | Minot AFB, ND | Various Minot AFB FSRM | FY27Q2/3 | \$5-25M (each), \$100M total | TBD |
| Military (PM-M) | 237310 | TBD | Minot AFB, ND | Repair MPA, Section V | FY27Q1 | \$25 - \$100M | TBD |
| Military (PM-M) | 237310 | TBD | Minot AFB, ND | Repair MPA, Section VI | FY27Q1 | \$25 - \$100M | TBD |



U.S. ARMY



USACE Omaha District Consolidated Competed Opportunities List, FY26-27*

* Information provided is based on current forecasting only and is subject to change. Planned Task Orders and Direct Awards are not included in this list.

| Lead Acquisition Branch/Division | NAICS/PSC | Type | Geography | Project Title and Description | Anticipated Solicitation Date | Anticipated Dollar Value | Anticipated Set-Aside |
|--|-----------|----------|--------------------------|---|-------------------------------|--------------------------|-----------------------|
| Military (PM-M) | 237310 | MATOC | Minot AFB, ND | Misc Airfield Paving Repairs | FY27Q3 | \$5-25M | TBD |
| Military (PM-M) | 236220 | MATOC | Minot AFB, ND | Renovate Dock 2 (DB) | FY27Q1 | \$5-25M | TBD |
| Military (PM-M) | 236220 | C | Minot AFB, ND | Renovate B475, 3rd Floor | FY27Q3/4 | \$25 - \$100M | TBD |
| Military (PM-M) | 236220 | C | Minot AFB, ND | B1134, LRSO, WSA | FY27Q3/4 | \$25 - \$100M | TBD |
| Military (PM-M) | 236220 | TBD | Minot AFB, ND | B1113, LRSO, WSA | FY27Q3/4 | \$5-25M | SB |
| Military (PM-M) | 236220 | TBD | Minot AFB, ND | B1085 Alert Shack Briefing Rm | TBD | \$5-25M | TBD |
| Military (PM-M) | 236220 | TBD | Minot AFB, ND | B145, LRSO, Mission Support | TBD | \$5-25M | TBD |
| Military (PM-M) | 236220 | | Minot AFB, ND | ADAL Main ECP Magic City Gate | TBD | \$5-25M | TBD |
| Military (PM-M) | 236220 | C | Offutt AFB, NE | SAOC 2-Bay Maint. Hanger | FY27Q1+ | \$500M+ | UNR |
| Military (PM-M) | 236220 | C | Offutt AFB, NE | SAOC Operations & Training Fac. | FY27Q1+ | \$250-\$500M | UNR |
| Military (PM-M) | 236220 | C | Offutt AFB, NE | Base Operations Mobility Center | FY27Q4+ | \$25 - \$100M | UNR |
| Military (PM-M) | 236220 | C | Offutt AFB, NE | CES Warehouse and Maint. Facility | FY27Q4+ | \$100-250M | UNR |
| Military (PM-M) | 236220 | C | Offutt AFB, NE | LRS Warehouse & Transportation Fac. | FY27Q4+ | \$25 - \$100M | UNR |
| Military (PM-M) | 236220 | MATOC, C | Petersen SFB, CO | Hazardous Waste Collection Point | FY27Q1 | \$1 - \$5M | TBD |
| Military (PM-M) | 236220 | MATOC, C | Schriever SFB, CO | Relay Ground Station - South Antenna | FY26Q3/4 | \$5 - \$25M | TBD |
| Military (PM-M) | 236220 | C | Schriever SFB, CO | 25th SRS Range Support Facility | FY27Q4 | \$25 - \$100M | TBD |
| Military (PM-M) | 236220 | C | US Air Force Academy, CO | Sijan Hall - Phase One- D-B-B Construction, USAFA | Advertised | \$100 - \$250M | UNR |
| Military (PM-M) | 236220 | C | US Air Force Academy, CO | Design / Reapair Expnsion Tank at Heat Plant | FY26Q4 | \$5 - \$25M | TBD |
| Military (PM-M) | 236220 | C | US Air Force Academy, CO | Repair Air Handling Units Fairchild Hall | FY26Q4 | \$5 - \$25M | TBD |
| Military (PM-M) | 236220 | C | US Air Force Academy, CO | Repair Heat Pumps Harmon Hall | FY27Q1 | \$5 - \$25M | TBD |
| Military (PM-M) | 236220 | C | US Air Force Academy, CO | Varsity Baseball Stadium Renovation | FY27Q2 | \$5 - \$25M | TBD |
| Military (PM-M) | 236220 | C | US Air Force Academy, CO | Repair Aerolab | FY27Q2 | \$5 - \$25M | TBD |
| MIL Programs Design Opportunities | | | | | | | |
| Military (PM-M) | 541330 | AE MATOC | Cavalier SFS, ND | FY28 Cooling Water System B830 | FY26Q3/4 | \$25-100M (PA) | TBD |
| Military (PM-M) | 541310 | AE MATOC | Minot AFB, ND | FY27 Pride Bldg, 475, 3rd Fl | FY26Q3/4 | \$25-100M (PA) | TBD |
| Military (PM-M) | 541310 | AE MATOC | Minot AFB, ND | FY27/28 B1134, LRSO, WSA | FY26Q3/4 | \$25-100M (PA) | TBD |
| Military (PM-M) | 541310 | AE MATOC | Minot AFB, ND | FY27 B1113, LRSO, WSA | FY26Q3/4 | \$5-25M (PA) | TBD |
| Military (PM-M) | 541310 | AE MATOC | FE Warren AFB, WY | GBSD/Sentinel Security Forces Ops Complex | FE26Q3 | \$100-250M (PA) | TBD |



U.S. ARMY



USACE Omaha District Consolidated Competed Opportunities List, FY26-27*

* Information provided is based on current forecasting only and is subject to change. Planned Task Orders and Direct Awards are not included in this list.

| Lead Acquisition Branch/Division | NAICS/PSC | Type | Geography | Project Title and Description | Anticipated Solicitation Date | Anticipated Dollar Value | Anticipated Set-Aside |
|----------------------------------|-----------|------|----------------------------|--|-------------------------------|--------------------------|-----------------------|
| Civil (PM-C) | 237990 | C | Bear Creek, CO | Replace Service and Emergency Gates Rehab Steel Tunnel | Q3/ 26 | \$1M - \$5M | SB |
| Civil (PM-C) | 237310 | C | Fort Peck Dam, MT | Spillway Bridge Pier Repair and Bearing Replacement | Q2/3 27 | \$5M - \$10M | SB |
| Civil (PM-C) | 237990 | C | Atchison County, MO | L-550-561 Missouri River | 1Q FY27 | \$5-10M | PSL |
| Civil (PM-C) | 237990 | C | Fremont County, IA | L-575 Missouri River | 1Q FY27 | \$20-30M | PSL |
| Civil (PM-C) | 237990 | C | Council Bluffs, IA | CB Levees (three levee systems) | 1Q FY27 | \$10-20M | PSL |
| Civil (PM-C) | 237990 | C | Sarpy County, NE | R-613/616-613 Missouri River | 3Q FY26 | \$5-10M | PSL |
| Civil (PM-C) | 237990 | C | Omaha, NE | Papillion Creek (phase 1) | 3Q FY26 | \$15-25M | PSL |
| Civil (PM-C) | 237990 | C | Omaha, NE | Papillion Creek (phase 2) | 3Q FY27 | \$10-15M | PSL |
| Civil (PM-C) | 237990 | C | Mills County, IA | L-594/601 Missouri River | 4Q FY27 | \$50-75M | SB |
| Civil (PM-C) | 237990 | C | Brownville, NE | R-548 Missouri River | 3Q FY27 | \$10-20M | PSL |
| Civil (PM-C) | 237990 | C | Ft Peck, MT | Excitation System Upgrade | Q2 FY27 | \$5M - \$10M | UNR |
| Civil (PM-C) | 238210 | C | Ft Peck, MT | Powerhouse DC Panel Board Replacement Mod | Q3 FY26 | \$1M - \$5M | SB |
| Civil (PM-C) | TBD | C | Big Bend, SD | 230kV Tie Line Switch | Q4 FY27 | \$1M - \$5M | TBD |
| Civil (PM-C) | 339991 | C | Ft Randal, SD | Draft Tube Bulkhead Seal Replacement | Q3 FY26 | \$500K - \$1M | SB |
| Civil (PM-C) | 238120 | C | Gavins Point, SD | Intake Crane Rail Replacement | Q1 FY27 | \$500K - \$1M | UNR |
| Civil (PM-C) | 238290 | C | Gavins Point, SD | Raw Water Intake Zebra Mussel Mitigation System Installation | Q4 FY26 | \$100K - \$1M | SB |
| Civil (PM-C) | 237990 | C | Gavins Point, SD | Intake Gate Hydraulic Cylinder System Refurbishment | Q1 FY26 | \$500K - \$1M | SB |
| Civil - Planning (PM-A) | TBD | C | Lower Brule, SD | Lower Brule North Ecosystem Restoration Element #2 | FY27 Q1 | \$10M - \$20M | SB |
| Civil - Planning (PM-A) | TBD | C | On the Tree, SD | BIA Route 2 Streambank Stabilization | FY27 Q4 | <\$5M | SB |
| Env. Remediation (PM-H) | 562910 | C | Rocky Mountain Arsenal | Construction of new water treatment plant | FY29 Q1 | \$10M-\$50M | UNR |
| Env. Remediation (PM-H) | 541330 | AE | Rocky Mountain Arsenal | Water treatment plant design | FY27 Q3 | \$1M-\$5M | UNR |
| Env. Remediation (PM-H) | 541330 | AE | Iowa Army Ammunition Plant | Basewide AE ENV Services | FY26 Q4 | \$1M-\$10M | UNR |
| Env. Remediation (PM-H) | 541330 | AE | Sentinel | AE ENV Services | FY27 Q2 | \$10M-\$50M | UNR |

SAME INDUSTRY DAY OMAHA POST

Patrick Honan, PE
Chief of Construction, Omaha District

May 2026



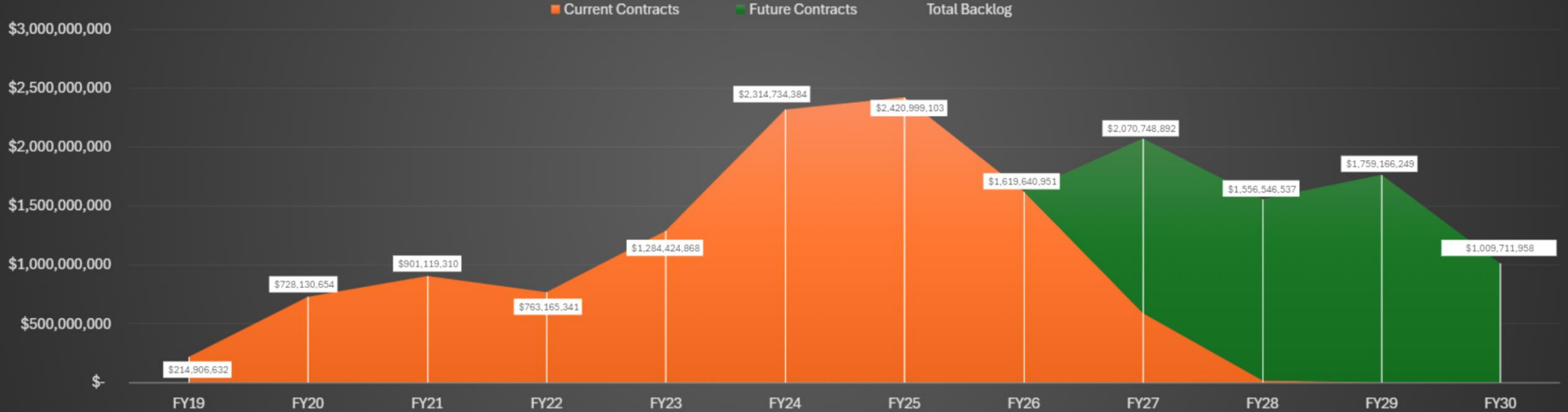
US Army Corps
of Engineers®

U.S. ARMY



“SUSTAINING MOMENTUM” – PEOPLE & PROGRAMS

Construction Trenderd Backlog FY18 - FY29



Placement/Program Growth:
 FY22 - \$525M placement
 FY23 - \$1.3B placement
 FY24 - \$2.3B placement
 FY25 - \$1.4B placement
 FY26 - \$1.6B placement (estimated)

CD Staff Trends: (end of FY)
 FY22 - 189
 FY23 - 230
 FY24 - 302
 FY25 - 276
 FY26 - 299 (estimated)

Significant Projects / Programs:
 - Ellsworth B-21 Beddown
 - Missouri River Levee Rehab



U.S. ARMY



PLACEMENT HEAT MAP



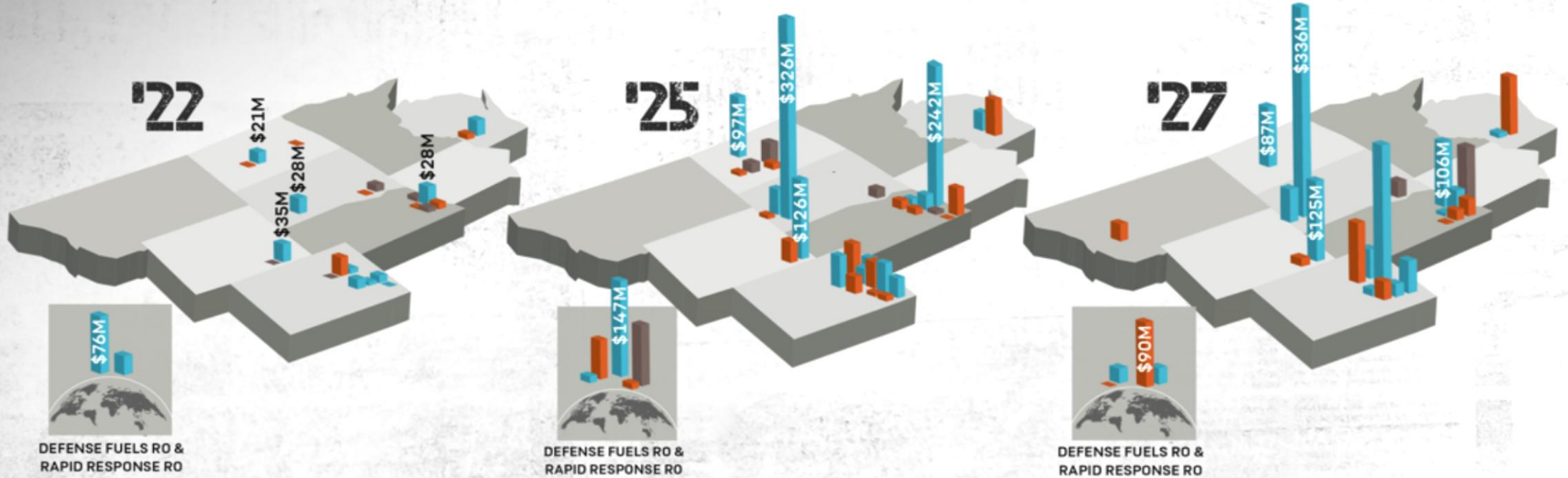
U.S. ARMY

CONSTRUCTION DIVISION

HEAT MAP



US Army Corps of Engineers
Omaha District





U.S. ARMY

ASSESSING OURSELVES & SETTING THE CONDITIONS



Construction Management Initiatives

- "Start Projects Strong"
- "Culture" Poster
- Safety Focus Poster

CONSTRUCTION DIVISION
BUILDING QUALITY FOR THE NATION

PARTNERSHIPS
WE PARTNER ALL THE TIME, EVERY TIME.

PROACTIVE APPROACH
WE DON'T LET THINGS HAPPEN,
WE MAKE THINGS HAPPEN.



EXCELLENCE
WE ALWAYS AIM FOR EXCELLENCE.





US Army Corps of Engineers®

CONSTRUCTION DIVISION
BUILDING QUALITY FOR THE NATION

SAFETY
ISN'T A PRIORITY,
IT'S AN
IMPERATIVE

US Army Corps of Engineers®



OMAHA DISTRICT CONSTRUCTION DIVISION
Start Projects Strong Playbook
October 2024

Construction Division
Start Projects Strong Checklist

| | | | |
|-----------------|----------------------|--|------------------|
| Area Office | <input type="text"/> | Construction Type | Design-Bid-Build |
| Resident Office | <input type="text"/> | Notice-To-Proceed (NTP) | 10/2/2024 |
| Contract Number | <input type="text"/> | Issued for Construction Drawings (IFC) | 11/2/2024 |
| Contract Name | <input type="text"/> | Period of Performance (PoP) | 365 |
| | | Construction Completion Date (CCD) | 10/2/2025 |

COLLECTIVE PERFORMANCE GOALS

| | | | |
|---|--|--|--|
| Review time for Gov-required Submittals 14 Days | Percentage of Resubmittals 10% of Project Submittals | 1st Transmittal Approval Target (A or B action) 95% Target | RFI Response time |
| Time to respond to correspondence requiring an answer | Time to resolve issues identified in correspondence | Time from RFP to valid proposal received | Time to settle modifications after proposal received |

COLLECTIVE MILESTONE GOALS Design-Bid-Build -- Goal is to complete 90 days after NTP

| | | | | |
|---|--|---|---|---------------------------------------|
| Preconstruction Conference 10/17/2024 | Preliminary Schedule Approved 10/17/2024 | Mutual Understanding Meeting 11/1/2024 | Submittal Register Scrub 10/17/2024 | BOD (ECB 2023-13) 11/1/2024 |
| Big 3 Plans Approved 11/1/2024 | Initial Schedule Approved 11/13/2024 | Partnering Meeting Conducted 11/16/2024 | Develop Risk Register 12/31/2024 | Informal CPARS 1/30/2025 |

Award

Insert Date

NTP

10/2/2024

Mobilization

Insert

Ground-breaking

Insert Date

Topping Out

Insert Date

Dry In

Insert

Commissioning

Insert Date

PreFinal Inspection

Insert Date

BOD

Insert Date

The dates shown in the above milestone timeline are not intended to deviate from contract requirements.

X _____

Contracting Officer's Representative

X _____

Contractor's Representative

USACE OMAHA DISTRICT ENGINEERING DIVISION

John M. Benson, PE
Chief, Engineering Division

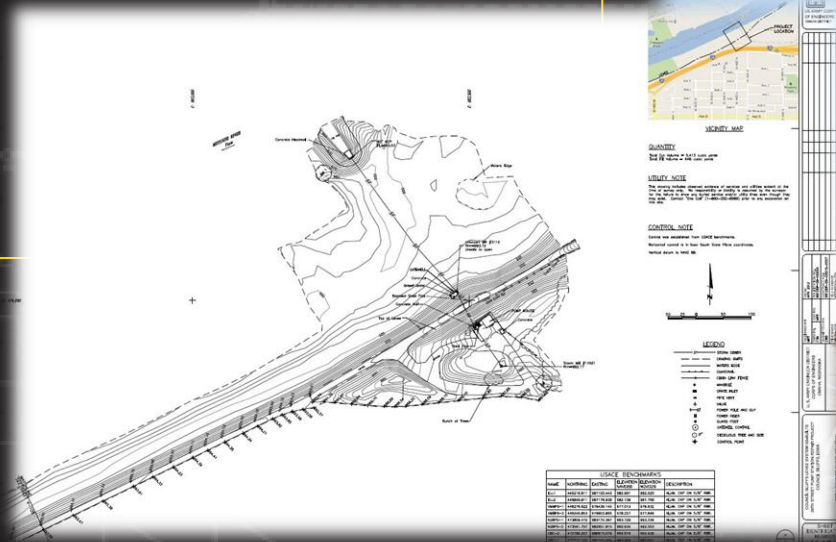
29 MAY 2026



U.S. ARMY



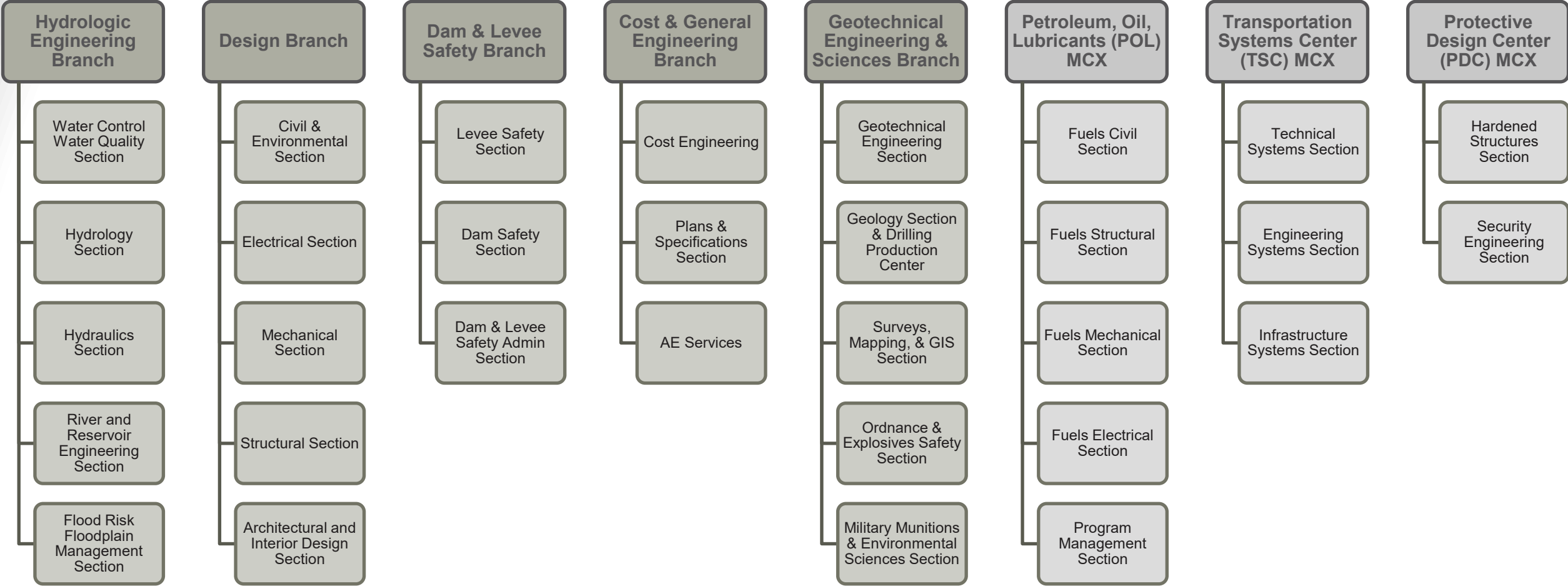
US Army Corps
of Engineers®





U.S. ARMY

ENGINEERING DIVISION ORGANIZATION



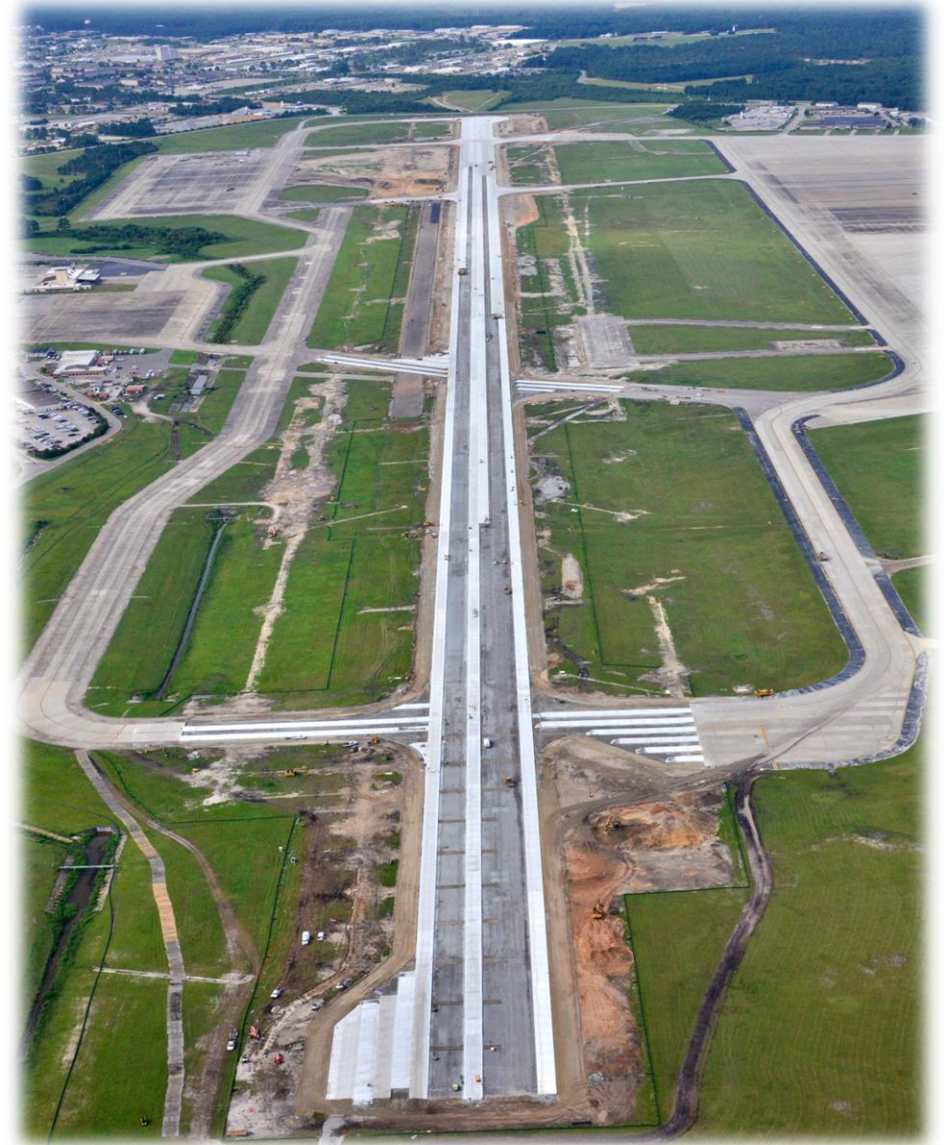
Overall Career Objectives:

Government Agency Engineer

- Technically proficient government representative
- Efficient mission delivery
- Unique Federal resource

Professional Growth

- Spectrum of infrastructure and environmental projects
- New Acquisitions and Delivery
- Enterprise Opportunities around the globe





U.S. ARMY

OMAHA DISTRICT ENGINEERING DIVISION FOCUS AREAS

Design Quality

- Deliver technically sound, sustainable, and resilient engineering solutions
- Emphasizing quality control processes throughout project development
- Promoting a continuous learning environment improving design integration

Leveraging Innovation

- Collaborative Design-Build and Other Transactional Authorities (OTA)
- Provide flexibility to pursue innovative solutions and emerging technologies
- Faster consideration of solutions to complex engineering challenges
- Embracing CAD/BIM advancements

Transforming Delivery

- Leveraging Partnerships to expand technical capabilities and accelerate learning
- Integrating innovation into routine project delivery processes
- Maintaining Technical Standards and Responsibility
- Ensuring safety, quality, and mission alignment



U.S. ARMY CORPS OF ENGINEERS OMAHA DISTRICT

SPECIAL PROJECTS BRANCH



RAPID RESPONSE

The Rapid Response Technical Center of Expertise provides nationwide dynamic expertise in time-sensitive environmental support, disaster response, and infrastructure through cost reimbursable contracts.

[CURRENT PROJECTS]

Company Creek Temporary Road Construction
(National Park Services)

- Joint Base Pearl Harbor-Hickham Sump Repair
- IAAAP Bulk Crystallized Lead Azide Mitigation
- United States Military Academy @ West Point Swing Space
- FE Warren Sentinel Utility Corridor Pilot Project
(DoD Construction)
- Potomac Interceptor Sewage Spill Remediation
(FEMA Environmental Service Contract)



FUELS

Leveraging POL-MCX assets and experience, the team has delivered life-cycle execution of Sustainment, Restoration, and Modernization projects supporting all military services and primary customers of Defense Logistics Agency (DLA) since the 1980s.

SUSTAINMENT, RESTORATION, AND MODERNIZATION [SRM]



- CENTRALLY MANAGED PROGRAMS
- PROJECT PLANNING STUDIES
- EMERGENT PROGRAM
- Recurring Maintenance & Minor Repairs

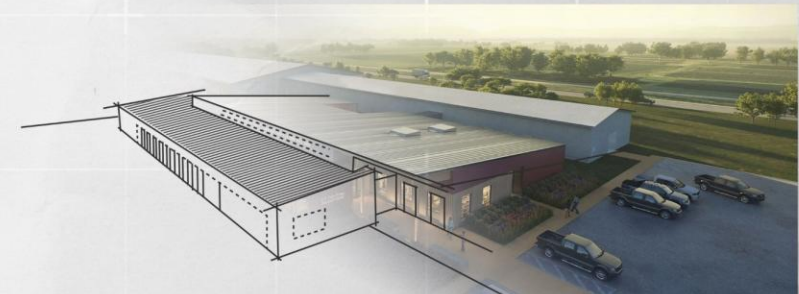


INTERAGENCY INTERNATIONAL SERVICES

Our Interagency and International Services mission is to provide technical assistance to state and local governments, tribal nations, private U.S. firms, international organizations, and foreign governments.

[CURRENT PARTNERS]

- Department of Veterans Affairs
- Department of Agriculture
 - Department of Energy
- Defense Intelligence Agency
- Department of Health and Human Services
- Environmental Protection Agency



OPPORTUNITIES

TYPE C

IDIQ

ACQUISITIONS UNDER DEVELOPMENT

RAPID RESPONSE SUITE

RAPID DISASTER INFRASTRUCTURE



VAMC CENTRAL UTILITY PLANT
NAICS: 236220 - UNRESTRICTED

\$25-100M | AD



FT. HOOD TANK REPAIR
NAICS: 231720 - SMALL BUSINESS

\$5-10M | FY26



RAPID RESPONSE
NAICS: 562910 - 8(A) SOLE SOURCE

<\$100M | FY26



RDI
NAICS: 236220 - SMALL BUSINESS

\$1.5B | FY27



USDA DAIRY FORAGE RESEARCH CENTER
NAICS: 236220 - UNRESTRICTED

\$25-100M | AD



EGLIN AFB COATINGS
NAICS: 231720 - SMALL BUSINESS

\$5-10M | FY26



RAPID RESPONSE
NAICS: 562910 - UNRESTRICTED

<\$200M | 26/27



RDI
NAICS: 236220 - UNRESTRICTED

\$3.5B | FY27



NELSON TUNNEL REMEDIAL ACTION
NAICS: 236220 - UNRESTRICTED

\$10-40M | FY27



FUELING SYSTEM REPAIRS
NAICS: 231720 - SMALL BUSINESS

\$5-10M | FY26



RAPID RESPONSE
NAICS: 562910 - SMALL BUSINESS

<\$150M | 26/27



DOE SERVICE CENTER RENOVATION
NAICS: 236220 - UNRESTRICTED

\$20-40M | FY26



JBLE DIKE REPAIRS
NAICS: 231720 - SMALL BUSINESS

\$10-30M | FY26



TENTATIVE RENOVATION
IN SECURED SPACES

TRSS

NAICS: 236220 - UNRESTRICTED

\$95M | 27/28



CONTACT

EDWARD.P.MALLUE@USACE.ARMY.MIL
SPECIAL PROJECTS BRANCH CHIEF





U.S. ARMY



CIVIL WORKS BRANCH

Greg Johnson
Civil Works Branch Chief (GS-14)
[acting]

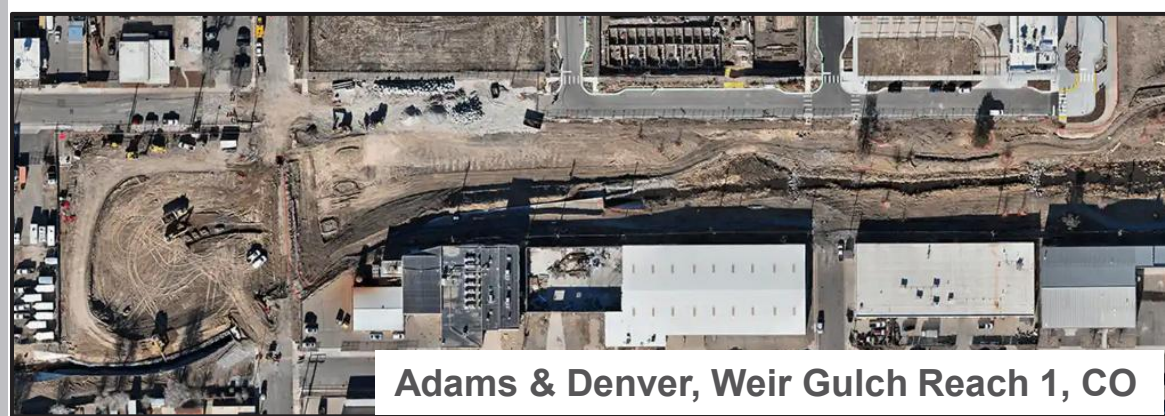
Tim (TC) Carlson
Section Chief (GS-13)
Civil Works

Robin Puskar
Section Chief (GS-13)
Hydropower

- Program Manager (GS-13)
- Program Manager (GS-13)
- Project Manager (GS-13)
- Project Manager (GS-12)
- Project Manager (GS-12)
- Project Management Assistant (GS-11)

- Program Manager (GS-14)
- Program Manager (GS-14) *[vacant]*
- Administrative Assistant (GS-7)

- Program Manager (GS-13)
- Civil Engineer (GS-13)
- Civil Engineer (GS-13)
- Project Manager (GS-13)
- Project Manager (GS-12)
- Project Management Assistant (GS-9) *[vacant]*





U.S. ARMY



CIVIL WORKS MAJOR PROGRAMS



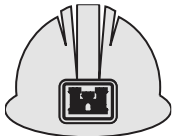
HYDROPOWER



DAM SAFETY



EMERGENCY RESPONSE / LEVEE REHABILITATION



TRADITIONAL / SPECIFICALLY AUTHORIZED PROJECTS



MISSOURI RIVER RECOVERY PROGRAM



OPERATIONS & MAINTENANCE SPECIFIC WORK



ENVIRONMENTAL INFRASTRUCTURE



U.S. ARMY

CIVIL WORKS OPPORTUNITIES



TYPE C – TRADITIONAL (O&M, FCCE, CG, CAP, TPP)

TYPE C – CUSTOMER FUNDED HYDROPOWER

| Project Title | Location | Solicitation | NAICS | Estimated Dollar Value | Acquisition Plan (Set-Aside) |
|--|---------------------|--------------|--------|------------------------|------------------------------|
| Replace Service and Emergency Gates Rehab Steel Tunnel | Lakewood, CO | Q3/ 26 | 237990 | \$1M - \$5M | SB |
| Spillway Bridge Pier Repair and Bearing Replacement | Fort Peck Dam, MT | Q2/3 27 | 237310 | \$5M - \$10M | SB |
| L-550-561 Missouri River | Atchison County, MO | 1Q FY27 | 237990 | \$5-10M | PSL |
| L-575 Missouri River | Fremont County, IA | 1Q FY27 | 237990 | \$20-30M | PSL |
| CB Levees (three levee systems) | Council Bluffs, IA | 1Q FY27 | 237990 | \$10-20M | PSL |
| R-613/616-613 Missouri River | Sarpy County, NE | 3Q FY26 | 237990 | \$5-10M | PSL |
| Papillion Creek (phase 1) | Omaha, NE | 3Q FY26 | 237990 | \$15-25M | PSL |
| Papillion Creek (phase 2) | Omaha, NE | 3Q FY27 | 237990 | \$10-15M | PSL |
| L-594/601 Missouri River | Mills County, IA | 4Q FY27 | 237990 | \$50-75M | SB |
| R-548 Missouri River | Brownville, NE | 3Q FY27 | 237990 | \$10-20M | PSL |
| Lower Brule North Element #2 | Lower Brule, SD | 1Q FY27 | TBD | \$10M - \$20M | SB |
| BIA Route 2 Bank Stabilization | On the Tree, SD | 4Q FY27 | TBD | <\$5M | SB |

| Project Title | Location | Solicitation | NAICS | Estimated Dollar Value | Acquisition Plan (Set-Aside) |
|--|------------------|--------------|--------|------------------------|------------------------------|
| Excitation System Upgrade | Ft Peck, MT | Q2 FY27 | 237990 | \$5M - \$10M | Full & Open |
| Powerhouse DC Panel Board Replacement Mod | Ft Peck, MT | Q3 FY26 | 238210 | \$1M - \$5M | SB |
| 230kV Tie Line Switch | Big Bend, SD | Q4 FY27 | TBD | \$1M - \$5M | TBD |
| Draft Tube Bulkhead Seal Replacement | Ft Randal, SD | Q3 FY26 | 339991 | \$500K - \$1M | SB |
| Intake Crane Rail Replacement | Gavins Point, SD | Q1 FY27 | 238120 | \$500K - \$1M | Full & Open |
| Raw Water Intake Zebra Mussel Mitigation System Installation | Gavins Point, SD | Q4 FY26 | 238290 | \$100K - \$1M | SB |
| Intake Gate Hydraulic Cylinder System Refurbishment | Gavins Point, SD | Q1 FY26 | 237990 | \$500K - \$1M | SB |

CONTACT

J. Greg Johnson
 Acting Chief Civil Works Branch
greg.johnson@usace.army.mil

ENVIRONMENTAL



William Harlon
Environmental Remediation Branch Chief



U.S. ARMY



US Army Corps
of Engineers®



EXECUTIVE SUMMARY



FY26 Overview:

- Forecasted \$165M FY26 Program
 - Air Force - \$80M ER Branch
 - Army / BRAC - \$35M
 - EPA IIS - \$35M
 - FUDS- \$15M

Staff Overview:

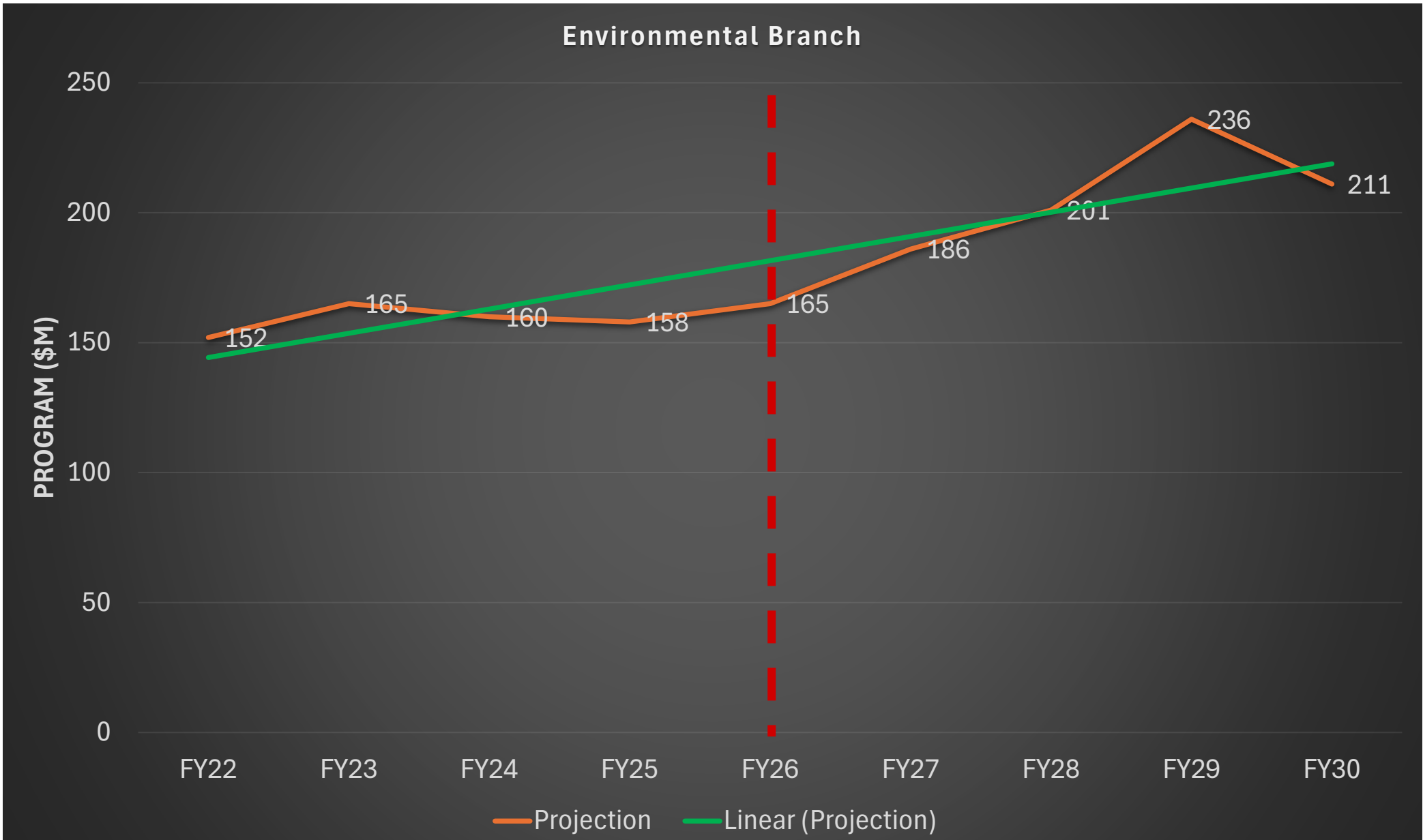
- 30+ Staff in the ER Branch (1 Branch Chief, 3 Section Chiefs, 30 PMs).
- Section Focus Areas (A – FUDS / MMRP, B – ARMY / IRP, C – AF / EQ / A&AS).
- PMs / PDT comprised of Civil (PE) / Mechanical / Environmental Engineers, PG, Chemists, Physical Scientists, PMP.
- PM Forward Opportunities on the CO Front Range.

Innovative Capabilities:

- Co-located with NWO Rapid Response and HNC EM CX in Omaha.
- Fence to Fence / Optimized Remediation Contracts.
- PFAS RI / Mitigation.
- Military Munitions Design Center (MMDC) - Omaha District is one of four USACE designated MMDC's and has a primary purpose to support military munitions response actions for unexploded ordnance and discarded military munitions.
- Executing Branch in CT AND a separate pre-award Acquisition Support Team (AST) consisting of PM, CS, KO.



ENVIRONMENTAL BRANCH WORKLOAD ANALYSIS





U.S. ARMY

ER BRANCH BUSINESS LINE POC



William Harlon, Branch Chief, william.d.harlon@usace.army.mil

Marc Shaw, Section A / MMDC Chief, marc.j.shaw@usace.army.mil

Lisa Madore, FUDS PgM, lisa.a.madore@usace.army.mil

Chad Hollrah, Section B Chief, chad.a.hollrah@usace.army.mil

Seth Reedy, Army PgM, seth.a.reedy@usace.army.mil

Matthew Brennan, BRAC PgM, matthew.p.brennan@usace.army.mil

Stephen Castellane, Section C Chief, Stephen.p.castellane@usace.army.mil

Carolyn Norton, AF PgM, carolyn.j.norton@usace.army.mil

Harry Decker, EQ PgM, harry.j.decker@usace.army.mil

MIL PROGRAMS BRIEF

SAME INDUSTRY DAY

29 MAY 2026

Andy Temeyer, Licensed Architect, PMP
Chief, Northern Tier PMO



U.S. ARMY



US Army Corps
of Engineers®



U.S. ARMY

MILITARY PROGRAMS BRANCH ORGANIZATION

25



Military Programs Branch

Branch Chief: Vacant

Southern Tier PMO

PMO Chief: Matt Bradley

Matthew.R.Bradley@usace.army.mil

402-995-2155

- Aligned with Fort Crook and Rocky Mt Area Offices
- NDR (Flood Recovery MILCON)
- SAOC Beddown
- All military programs (SRM & MILCON):
 - Offutt AFB
 - USAFA
 - Fort Carson
 - Peterson SFB
 - Schriever SFB
 - Fort McCoy
 - IAAP
 - Truax ANG
 - Cheyenne Mt SFS

Northern Tier PMO

PMO Chief: Andy Temeyer

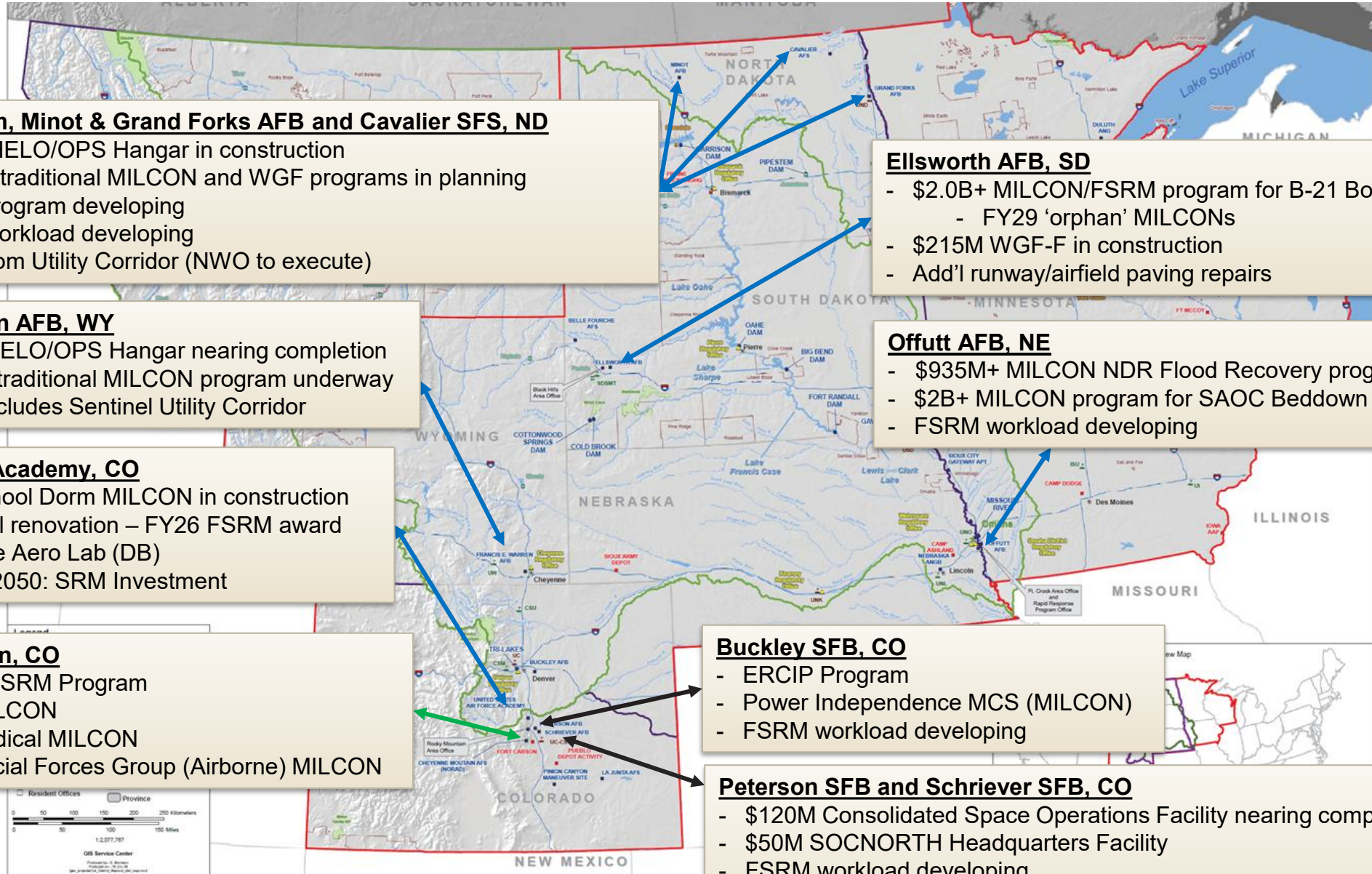
Andy.C.Temeyer@usace.army.mil

402-995-2664

- Aligned with Black Hills and Denver Area Offices
- B-21 Beddown
- Sentinel Beddown
 - Sentinel UC Program
- WGF program
- All military programs (SRM & MILCON):
 - FE Warren AFB
 - Buckley SFB
 - Minot AFB
 - Ellsworth AFB
 - Grand Forks AFB
 - Cavalier SFS



OMAHA DISTRICT MILITARY PROGRAMS



Malmstrom, Minot & Grand Forks AFB and Cavalier SFS, ND

- \$135M HELO/OPS Hangar in construction
- Sentinel traditional MILCON and WGF programs in planning
- LRSO program developing
- FSRM workload developing
- Malmstrom Utility Corridor (NWO to execute)

Ellsworth AFB, SD

- \$2.0B+ MILCON/FSRM program for B-21 Bomber Beddown
 - FY29 'orphan' MILCONs
- \$215M WGF-F in construction
- Add'l runway/airfield paving repairs

F.E. Warren AFB, WY

- \$125M HELO/OPS Hangar nearing completion
- Sentinel traditional MILCON program underway
 - Includes Sentinel Utility Corridor

Offutt AFB, NE

- \$935M+ MILCON NDR Flood Recovery program
- \$2B+ MILCON program for SAOC Beddown in planning phase
- FSRM workload developing

Air Force Academy, CO

- Prep School Dorm MILCON in construction
- Sijan Hall renovation – FY26 FSRM award
- Renovate Aero Lab (DB)
- USAFA 2050: SRM Investment

Fort Carson, CO

- Robust FSRM Program
- Army MILCON
- DHA Medical MILCON
- 10th Special Forces Group (Airborne) MILCON

Buckley SFB, CO

- ERCIP Program
- Power Independence MCS (MILCON)
- FSRM workload developing

Peterson SFB and Schriever SFB, CO

- \$120M Consolidated Space Operations Facility nearing completion
- \$50M SOCNORTH Headquarters Facility
- FSRM workload developing
- Future Space Command/Space Force projects?





U.S. ARMY

USACE Omaha District Consolidated Competed Opportunities List, FY26-27*

* Information provided is based on current forecasting only and is subject to change. Planned Task Orders and Direct Awards are not included in this list.



| Lead Acquisition Branch/Division | NAICS/PSC | Type | Geography | Project Title and Description | Anticipated Solicitation Date | Anticipated Dollar Value | Anticipated Set-Aside |
|--|-----------|----------|--------------------------|---|-------------------------------|------------------------------|-----------------------|
| MIL Programs Construction Opportunities | | | | | | | |
| Military (PM-M) | 236220 | TBD | Buckley SFB, CO | Repair Dorm B28 | FY27Q2/3 | \$5 - \$25M | TBD |
| Military (PM-M) | TBD | C | Cavalier SFS, ND | Cooling Water System B830 | FY27Q3/4 | \$25-100M | TBD |
| Military (PM-M) | 236220 | C | Ellsworth AFB, SD | B-21 Alert Facility | Advertised | \$25-100M | UNR |
| Military (PM-M) | 236220 | C | Ellsworth AFB, SD | B-21 W. Alert Apron Environmental Protection Shelters (EPS) | Advertised | \$25-100M | UNR |
| Military (PM-M) | 236220 | C | Ellsworth AFB, SD | B-21 60 Row EPS – South | Advertised | \$25-100M | UNR |
| Military (PM-M) | 236220 | C | Ellsworth AFB, SD | B-21 Munitions Maintenance Facility (MUNS Mx) | Advertised | \$25-100M | UNR |
| Military (PM-M) | 236220 | C | Ellsworth AFB, SD | B-21 80 Row EPS | Advertised | \$25-100M | UNR |
| Military (PM-M) | 236220 | C | Ellsworth AFB, SD | Two Munitions Storage Igloos | FY27Q1 | \$5-25M | SB |
| Military (PM-M) | 237310 | MATOC | Ellsworth AFB, SD | Misc Runway Repairs | FY27Q3 | \$5-25M | SB |
| Military (PM-M) | 236220 | C | FE Warren AFB, WY | GBSD/Sentinel Combined Maintenance Facility (CMF) | Advertised | \$100-250M | UNR |
| Military (PM-M) | 236220 | C | FE Warren AFB, WY | GBSD/Sentinel Integrated Training Center (ITC) | Advertised | \$25-100M | UNR |
| Military (PM-M) | 237130 | MATOC | FE Warren AFB, WY | GBSD/Sentinel Utility Corridor | Advertised | \$500M+ | UNR |
| Military (PM-M) | 236220 | C | FE Warren AFB, WY | GBSD/Sentinel Ops Group Facility | FY27Q4 | \$100-250M | UNR |
| Military (PM-M) | 236220 | C | Ft Carson, CO | SOF Group Headquarters Building | FY27Q4 | \$25 - \$100M | UNR |
| Military (PM-M) | 236220 | C | Ft Carson, CO | Replace Ambulatory Care Center (ACC) | FY26Q4 | \$25 - \$100M | UNR |
| Military (PM-M) | 236220 | C | Ft Carson, CO | Butts Ambulatory Care Center (ACC) | FY27Q4 | \$25 - \$100M | UNR |
| Military (PM-M) | 236220 | C | Ft Carson, CO | DLA General Purpose Warehouse | TBD | \$25 - \$100M | UNR |
| Military (PM-M) | Varies | MATOC, C | Ft Carson, CO | Various Fort Carson FSRM (Multiple) | FY26Q2-4 | \$1-5M (each), \$50M total | SB |
| Military (PM-M) | 236220 | TBD | Ft Carson, CO | Repair Barracks, B1363 (Rolling Pins) | FY27Q1 | \$5-25M | TBD |
| Military (PM-M) | 236220 | TBD | Ft Carson, CO | CNS, TEMP SCIF | FY27Q1 | \$1 - \$5M | SB |
| Military (PM-M) | 237130 | MATOC | Malmstrom AFB, MT | FY29 GBSD/Sentinel Utility Corridor | TBD | \$500M+ | UNR |
| Military (PM-M) | 236220 | C | Minot AFB, ND | GBSD/Sentinel Security Forces Ops Complex | FY26Q4 | \$100-250M | UNR |
| Military (PM-M) | 236220 | C | Minot AFB, ND | GBSD/Sentinel Consolidated Vehicle Maintenance Complex | FY26Q4 | \$100-250M | UNR |
| Military (PM-M) | TBD | C | Minot AFB, ND | GBSD/Sentinel Athletic Complex | FY26Q4 | \$1-10M | SB |
| Military (PM-M) | 236220 | MATOC, C | Minot AFB, ND | Various Minot AFB FSRM | FY27Q2/3 | \$5-25M (each), \$100M total | TBD |
| Military (PM-M) | 237310 | TBD | Minot AFB, ND | Repair MPA, Section V | FY27Q1 | \$25 - \$100M | TBD |
| Military (PM-M) | 237310 | TBD | Minot AFB, ND | Repair MPA, Section VI | FY27Q1 | \$25 - \$100M | TBD |
| Military (PM-M) | 237310 | MATOC | Minot AFB, ND | Misc Airfield Paving Repairs | FY27Q3 | \$5-25M | TBD |
| Military (PM-M) | 236220 | MATOC | Minot AFB, ND | Renovate Dock 2 (DB) | FY27Q1 | \$5-25M | TBD |
| Military (PM-M) | 236220 | C | Minot AFB, ND | Renovate B475, 3rd Floor | FY27Q3/4 | \$25 - \$100M | TBD |
| Military (PM-M) | 236220 | C | Minot AFB, ND | B1134, LRSO, WSA | FY27Q3/4 | \$25 - \$100M | TBD |
| Military (PM-M) | 236220 | TBD | Minot AFB, ND | B1113, LRSO, WSA | FY27Q3/4 | \$5-25M | SB |
| Military (PM-M) | 236220 | TBD | Minot AFB, ND | B1085 Alert Shack Briefing Rm | TBD | \$5-25M | TBD |
| Military (PM-M) | 236220 | TBD | Minot AFB, ND | B145, LRSO, Mission Support | TBD | \$5-25M | TBD |
| Military (PM-M) | 236220 | C | Minot AFB, ND | ADAL Main ECP Magic City Gate | TBD | \$5-25M | TBD |
| Military (PM-M) | 236220 | C | Offutt AFB, NE | SAOC 2-Bay Maint. Hanger | FY27Q1+ | \$500M+ | UNR |
| Military (PM-M) | 236220 | C | Offutt AFB, NE | SAOC Operations & Training Fac. | FY27Q1+ | \$250-\$500M | UNR |
| Military (PM-M) | 236220 | C | Offutt AFB, NE | Base Operations Mobility Center | FY27Q4+ | \$25 - \$100M | UNR |
| Military (PM-M) | 236220 | C | Offutt AFB, NE | CES Warehouse and Maint. Facility | FY27Q4+ | \$100-250M | UNR |
| Military (PM-M) | 236220 | C | Offutt AFB, NE | LRS Warehouse & Transportation Fac. | FY27Q4+ | \$25 - \$100M | UNR |
| Military (PM-M) | 236220 | MATOC, C | Petersen SFB, CO | Hazardous Waste Collection Point | FY27Q1 | \$1 - \$5M | TBD |
| Military (PM-M) | 236220 | MATOC, C | Schriever SFB, CO | Relay Ground Station - South Antenna | FY26Q3/4 | \$5 - \$25M | TBD |
| Military (PM-M) | 236220 | C | Schriever SFB, CO | 25th SRS Range Support Facility | FY27Q4 | \$25 - \$100M | TBD |
| Military (PM-M) | 236220 | C | US Air Force Academy, CO | Sijan Hall - Phase One - D-B-B Construction, USAFA | Advertised | \$100 - \$250M | UNR |
| Military (PM-M) | 236220 | C | US Air Force Academy, CO | Design / Repair Expsion Tank at Heat Plant | FY26Q4 | \$5 - \$25M | TBD |
| Military (PM-M) | 236220 | C | US Air Force Academy, CO | Repair Air Handling Units Fairchild Hall | FY26Q4 | \$5 - \$25M | TBD |
| Military (PM-M) | 236220 | C | US Air Force Academy, CO | Repair Heat Pumps Harmon Hall | FY27Q1 | \$5 - \$25M | TBD |
| Military (PM-M) | 236220 | C | US Air Force Academy, CO | Varsity Baseball Stadium Renovation | FY27Q2 | \$5 - \$25M | TBD |
| Military (PM-M) | 236220 | C | US Air Force Academy, CO | Repair Aerolab | FY27Q2 | \$5 - \$25M | TBD |
| MIL Programs Design Opportunities | | | | | | | |
| Military (PM-M) | 541330 | AE MATOC | Cavalier SFS, ND | FY28 Cooling Water System B830 | FY26Q3/4 | \$25-100M (PA) | TBD |
| Military (PM-M) | 541310 | AE MATOC | Minot AFB, ND | FY27 Pride Bldg, 475, 3rd Fl | FY26Q3/4 | \$25-100M (PA) | TBD |
| Military (PM-M) | 541310 | AE MATOC | Minot AFB, ND | FY27/28 B1134, LRSO, WSA | FY26Q3/4 | \$25-100M (PA) | TBD |
| Military (PM-M) | 541310 | AE MATOC | Minot AFB, ND | FY27 B1113, LRSO, WSA | FY26Q3/4 | \$5-25M (PA) | TBD |
| Military (PM-M) | 541310 | AE MATOC | FE Warren AFB, WY | GBSD/Sentinel Security Forces Ops Complex | FE26Q3 | \$100-250M (PA) | TBD |