

JUNE POST MEETING

Our **Jun Post meeting** will be on **Thursday, Jun 25**, at the Old San Francisco Steakhouse. The presentation will be on the **Air Force Energy Program**. Our speaker will be **Gerald Boetsch, P.E., Chief Utilities Privatization Branch, at the Air Force Civil Engineer Center**. If you have been following the news, you know there are many energy initiatives going on including a microreactor project for Joint Base San Antonio.

Mr. Boetsch is a graduate of California Polytechnic State University - San Luis Obispo. Prior to his current position, Gerald served as the Chief of the Engineering Division, Chief of Portfolio Optimization and Base Energy & Utility Program Manager at Edwards Air Force Base. He also worked in the private sector as a Project Engineer for a tribal-owned 8(a) company and Project Manager at Disneyland in California where he was responsible for the execution of more than \$10 million in projects.



Don't miss out on this exciting presentation - RSVP at

[HTTPS://260625SAMESATX.EVENTBRITE.COM](https://260625samesatx.eventbrite.com) by Monday Jun 22, 10 am



C
O
N
T
E
N
T
S

Featured Events: Elections.....	2
Board Positions.....	2
Golf & SBMRF Wrap-up.....	3-6
President's Corner.....	7-7
Membership.....	8-10
Professional Development.....	11-12
College Outreach.....	13

Jobs.....	14
Upcoming Events.....	15-16
Honor Gallery.....	14-17
Board Members.....	18-20
Sustaining Members.....	21-24
Sustaining Members.....	22-26

C
O
N
T
E
N
T
S

Post Board Positions

Post Volunteers Needed

We are looking for Post members interested in serving in an appointed Board position that is currently vacant. Appointed positions are filled by members that are appointed / re-appointed each year by the incoming Post President.

To serve in any Post Board position you **MUST BE** a SAME member in good standing and be affiliated with the San Antonio Post as listed on the **current Post membership rosters**. You must keep your membership current.

We are seeking volunteers for the following position:

- **STEM Outreach Coordinator** - responsible for coordinating with local organizations to identify local STEM activities, helps with getting Post volunteers to support the activities, plans and executes the Post support of the activities.

The Post Board is organized as shown in the chart at **<https://www.same.org/san-antonio/board-of-direction/>**.

Appointed positions require a few hours of work per month. Our Post Board meetings are conducted virtually by Zoom (typically on the last Thursday of the month - we try not to hold a Board meeting in December). Board members are expected to attend at least 3 Board meetings in addition to the work required for their position.

Appointed positions are a great stepping stones to start your journey into Post leadership!

If interested, email **samesatx@gmail.com**.



Golf & SBMRF Wrap-up

Post Scholarship Golf Tournament May 5 Canyon Springs GC



Thank You Event Sponsors

Golf & SBMRF Wrap-up

Post Scholarship Golf Tournament May 5 Canyon Springs GC



Thank You Event Sponsors

Golf & SBMRF Wrap-up

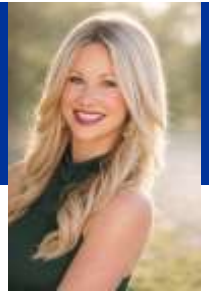
Small Business Market Research Fair May 6-7 Embassy Suites - Landmark



Thank You Event Sponsors



President's Corner



Hello Post Members & Friends,

As summer begins, I want to take a moment to reflect on the incredible momentum we've built together this year, and more specifically, this past last month. I want to thank everyone who was able to attend, participate, and volunteer at our annual Small Business Market Research Fair last month. Our event attracted over 365 attendees and was our most successful industry day yet. This would not have been possible without the support of our industry, SAME, and government agencies. Events like this remind me of the critical role our community plays in supporting the missions that strengthen our nation. On behalf of all the SAME San Antonio Post Board members, I want to thank you for the continued commitment to advancing collaboration, innovation, and excellence across the federal and defense sectors.

This year has already brought significant opportunities and challenges for government agencies, industry partners, and the broader national security community. Through it all, our Post has remained focused on fostering meaningful connections, professional development, and knowledge sharing among the dedication professionals who serve our country's most important missions. These aspects were also advanced at SAME JETC in Portland, Oregon where over 2,000 attendees were able to collaborate and innovate together towards beneficial solutions. The month of May was one of the most impactful ones yet.

The start of summer often brings a renewed sense of energy and opportunity. It is a season of growth, connection, and community – values that are near and dear to my heart and our Post. Over the coming months, we look forward to continuing and expanding our programs, such as supporting STEM camps, campers, and mentors while creating even more opportunities to further influence and inspire our future generations.

Lastly, I want to remind everyone that it is summer. Take the trip. Spend time with your family and loved ones. Do NOT work on your PTO (reminder that stands for PAID TIME OFF). Turn off the email notifications and meeting alerts. As your Post President, I give everyone permission to take a vacation, and I encourage you to reconnect to life outside your job. I realize this is much easier said than done but you can do it.

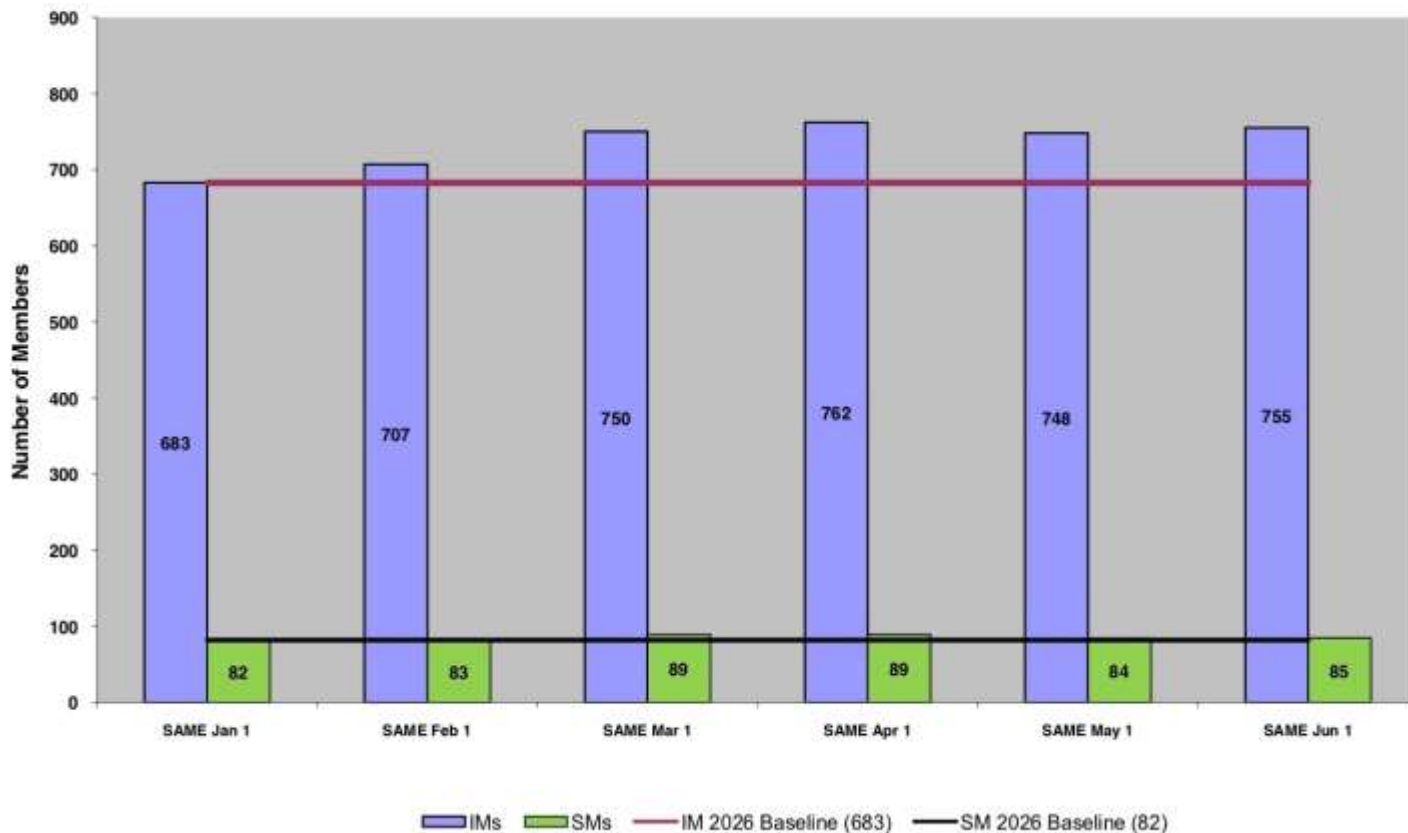
Thank you all again for being an essential part of our San Antonio Post. Your commitment and belief in SAME's mission is what contributes to our success. I hope you enjoy this summer season and take pride in the positive change we, as a team, are creating to support the success of our missions

Sarah Fowlkes
Post President

From the President's Desk

Membership

2026 San Antonio Post Membership
(Goal: Growth in IM plus SM Changes)



If you are a member, be sure to check your membership status!

Go to <https://www.same.org/san-antonio/membership-rosters-stats/> for Individual, Organization and Student Member Rosters

Learn more about our Post - click [HERE](#) for our New Member Handbook

**YOUR
MEMBERSHIP
MATTERS**

NEW MEMBERS

We would like to welcome our new members who joined or re-joined (in a new capacity) our Post from May 1 – Jun 1, 2026:

NAME	ORGANIZATION	TYPE
Stephen Barrett	Greenland Enterprises Inc.	Private Industry
Keith Bryan		Private Industry
Thomas Burr	Austin Bridge & Road L.P.	Private Industry
Roberto Cruz	Lina T. Ramey & Associates	Private Industry
Cameron Douglas	Butt Construction Company Inc.	Private Industry
Isaac Eickmann	Matrix Design Group	Private Industry
William Heathcott	Austin Bridge & Road L.P.	Private Industry
Jaden Hermann	Trinity University	Student
Steven Howsmon	USAF	Government
Matthew McCarthy	US Army	Government
Mahsa Modiri Gharehveran		Private Industry
Brian Salerno	Austin Bridge & Road L.P.	Private Industry
Clay Stark	Austin Bridge & Road L.P.	Private Industry
Matt Tamrowski	Austin Bridge & Road L.P.	Private Industry
Bill Thomas	Austin Bridge & Road L.P.	Private Industry
Joshua Yerk	US Air Force	Government

We would also like to welcome our new organizational members who joined or re-joined our Post from May 1 – Jun 1, 2026:

ORGANIZATION	TYPE
Austin Bridge & Road / L.P.	Private Sector



RELOCATING???

Did you get a new job or assignment? Or maybe there's some other reason you are or soon will be relocating away from the San Antonio area? There are many important things to think or be concerned about when moving - home, utilities, school for the kids, changing of mail address, vehicle registration and more.

Those, of course, are everybody's focus areas as they prepare for the next big step in their career or personal lives.

As you work those things in your move, it's easy to forget about your SAME membership. Things like what happens to my membership or is there a Post/Field Chapter where I'm relocating to may not be on the top of your list to think about and rightfully so.

So we are here to help you with your SAME membership transition. Just email us where you are moving at samesatx@gmail.com and we will help getting your membership record changed and notifying the Post/Field Chapter in the area you are moving to.

We value you as a SAME member and even though you may be moving away from the San Antonio area we want you to continue to receive all the benefits of membership with our great Society.



MAKING A DIFFERENCE AS A MEMBER - SUPPORT OUR SAME FOUNDATION

The SAME Foundation supports programs that introduce youth to STEM, develop emerging leaders within our membership, and increase the number of veterans transitioning into the engineering and construction workforce. The Foundation also provides a secure and beneficial repository for charitable and other bequeaths from members of the Society and the public at large. See <https://www.same.org/foundation/> for details.

Our nation must have a continuous pipeline of quality engineering and STEM leaders to address the complex national security and infrastructure challenges. The SAME Foundation was specifically created to attack this need by leveraging the charitable capacity of our Society and of engineering and related professions.

Contributing to our SAME foundation is your opportunity to make a difference as a SAME professional!!

We hope you will consider donating or encouraging your company/organization to donate to the SAME Foundation at <https://my.same.org/donate>.



CREREDENTIALING ASSISTANCE PROGRAM (CAP) FACT SHEET

OVERVIEW

The Credentialing Assistance Program (CAP) provides financial support for professional development, education, licensure and certification preparation, exam testing, and mentoring initiatives to benefit members. SAME will reimburse a portion of exam sitting or registration fees and the costs of testing preparation and training materials upon confirmation of passing an exam.

WHO IS ELIGIBLE?

- This program is open to all SAME members, regardless of age.
- Applicants must be a SAME member for at least 12 months before applying.
- Applicants must have passed the respective examination and provide the required documentation with the application.
- The program covers financial assistance for exam sitting fees, registration fees, and study expenses (such as books or classes for the specific exam).

APPROVED A/E/C CREDENTIALS

- Certified Construction Manager (CCM)
- Certified Energy Manager (CEM)
- Certified Facility Manager (CFM)
- Certified Professional Services Marketer (CPSM)
- Design Build Institute of America (DBIA)
- Facility Management Professional (FMP)
- Leadership In Energy and Environmental Design (LEED)
- National Institute for Certification in Engineering Technologies (NICET)
- Professional Engineer (PE)
- Project Management Professional (PMP)
- Registered Architect (RA)

PROGRAM RESTRICTIONS

No single government official or employee, or private sector individual shall receive more than \$500 in assistance through the SAME CAP program. Individuals will remain eligible to receive reimbursement through other SAME programs.

"Credentials in the A/E/C profession are a commitment to continuous learning, which is critical in such a fast and complex industry that has responsibility of protecting public health and safety. I am grateful to work in an industry that has unlimited opportunities to learn, including many credentialing paths that add value to our work."

- Hayley Blaser, PE, PMP

For more information, visit
www.same.org/credentialing



CLICK ANY WHERE ON FLYER TO GO TO SAME WEB

CREDENTIALING REVIEW COURSE (CRC) PROGRAM SHEET

OVERVIEW

The Credentialing Review Course (CRC) is a valuable benefit that provides SAME members with free access to credentialing review courses to help prepare them for professional certification exam testing.

REQUIREMENTS

- Applicants must demonstrate active engagement or participation at the Post, Regional, or National level, and receive an endorsement from a Post President, Fellow, or National Board of Direction member
- Applicants must be active, paid SAME members for at least 12 months. Student memberships do not count toward this period
- The member must provide proof of registration for their respective exam within 30 days of receiving access to the review courses through PPI2Pass (for FE, PE, and ARE credentials). The exam should be scheduled within three- to nine-months of the award.
- Applicant must be willing to engage with a mentor from SAME (monthly at a minimum) throughout the time enrolled in the review course.
- Members selected for the CRC (or SAME Credentialing Assistance Program) will remain eligible to receive benefits from the other credentialing support program, no matter what order they apply to receive benefits.

ON-DEMAND CREDENTIALING REVIEW COURSES

The following professional licensure exams are available through the PPI2Pass:

- Fundamentals of Engineering Exam (All included)
- Professional Engineer Exam (All included)
- Architect Registration Examination (PcM, PM, PA, PPD, PDD, CE)

PROGRAM PARTICIPATION ACCOUNTABILITY

- Once an applicant is granted a seat in the CRC, they will have access for 12 months.
- Recipients will be assigned a mentor or they may request an established SAME member to serve as their mentor.
- Participants are to monitor overall progress based on the initial plan they establish with their mentor (and provide a schedule to the mentor to ensure the plan is being met).
- Participants will receive a warning if they fail to maintain the planned progress over the initial eight-week period.
- Should there be no improvement in the subsequent four weeks, the committee will assess the situation for additional action.

"Credentials are an important milestone for professionals in a highly regulated industry for safety and the public's welfare, such as the A/E/C sector. It means a commitment to deliver higher standard products and legally protects all the stakeholders involved."

- Justin Trexler Gattari, RA, LEED AP BD+C



For more information, visit www.same.org/credentialing

CLICK ANY WHERE ON FLYER TO GO TO SAME WEB

Local CMAA Chapter Opens College Scholarship Call

Our friends at the South Central Texas Chapter have opened their college scholarship program. You may know of a eligible student interested in the program. Go to <https://sctxcmaa.org/Scholarships> for all the details.

**2026 SCHOLARSHIP
NOW OPEN**

SCAN TO APPLY

CMAA
SOUTH/CENTRAL TEXAS CHAPTER

**Supporting the Next Generation
of Construction Leaders**

- High School Seniors
- Undergraduate Students

SCHOLARSHIP AWARDS

- Awards range from **\$1,000 – \$5,000**
- Designed for students pursuing Construction Management or related fields

APPLICATION TIMELINE

- Applications open all **Summer 2026**
- Award reviews conducted periodically throughout the summer

RECIPIENTS RECOGNIZED AT:
SCTXCMAA Annual Scholarship Clay Shooting Classic

WHO SHOULD APPLY?

- ✓ Strong academic performance
- ✓ Interest in construction, engineering, or related fields
- ✓ Involvement in extracurricular or STEM programs

APPLY NOW

SUBMIT APPLICATIONS ELECTRONICALLY:
sctxcmaa.scholarship@gmail.com

LEARN MORE AT: sctxcmaa.org/Scholarships

Job Opportunities

New Holt CAT Position Available

HOLT CAT has a job opportunity to lead an effort pulling in sales, service and parts into one plan. They are looking for Civil Engineers with Construction Management backgrounds. This is the San Antonio position, but there is a similar position in Irving Texas. The position works directly under the Senior Vice President for Sales. Details about the position are available at <https://holtgrp.pinpointhq.com/en/postings/d731acc-7289-4a44-87f1-0b396466ec93>.



HOLT has several other positions available in San Antonio and other areas. See <https://www.holtcat.com/careers> for more details.



Upcoming Events

SAME & Other Activities

(see <https://www.same.org/san-antonio/events/> for Post Events)

(see <https://www.same.org/events-programs/> for SAME Events)

- **Post Meeting, Jun 25, “Air Force Energy Program”, Old San Francisco Steakhouse - see [page 1](#) and <https://260625samesatx.eventbrite.com>**
- **2026 Industrialized Housing Summit, Jul 23-24, AT&T Hotel and Conference Center (University of Texas at Austin) - see [page 16](#) and <https://cvent.utexas.edu/event/510d0030-a4ca-4a44-a4ea-028cce12f260/summary>**
- **Post Meeting, Aug 20, Old San Francisco Steakhouse - SAVE THE DATE**
- **Joint CMAA-Post Meeting, Sep 17, “Annual Professional Ethics Training”, Old San Francisco Steakhouse - SAVE THE DATE**
- **Post Meeting, Oct 15, Old San Francisco Steakhouse - SAVE THE DATE**
- **Post Meeting, Nov 19, Old San Francisco Steakhouse - SAVE THE DATE**



Upcoming Events

2026 Industrialized Housing Summit

July 23 – 24, 2026

OVERVIEW

The 2026 Industrialized Housing Summit tackles one central question:

How do we efficiently deliver high-quality housing at scale using industrialized construction on real projects, under real constraints, today?

IHS is a working summit for the people responsible for commissioning, financing, manufacturing, and delivering industrialized construction projects: owners, developers, manufacturers, builders, capital providers, operators, and public-sector leaders.

The summit is organized around six critical questions currently blocking industrialized construction at scale — from financing and factory utilization to procurement, delivery certainty, and operational integration.

Each session is designed to help participants work through the real bottlenecks slowing deployment: cost, risk, coordination, procurement, and execution.

This is not a passive conference built around presentations. The focus is on helping participants make better deployment, investment, procurement, and operating decisions.

WHAT MAKES IHS2026 DIFFERENT

Real Projects, Not Theory

Through curated site tours, operating case studies, and direct discussions with the people delivering projects today

Public-Sector Demand Meets Private-Sector Delivery

Bringing military, institutional, and housing leaders together with the manufacturers, builders, capital providers, and operators needed to deliver at scale

Owners and Providers Solving Problems Together

Organizations with real housing demand meet the people capable of delivering industrialized construction successfully today

Structured Networking Built Around Real Deployment

Helping participants identify real partnership opportunities and move projects forward after the summit

July 23, 2026 – July 24, 2026

8:00 AM-3:00 PM CT

🕒 Viewing in Central Time

[Register Now](#)

[Already registered?](#)

AT&T Hotel and Conference Center (The University of Texas at Austin)

© 1900 University Avenue
Austin, TX 78705

CLICK ON ANYWHERE ON FLYER ABOVE TO GO TO IHS WEBSITE

\$100 REGISTRATION MILITARY/VETERAN DISCOUNT - CODE IHS26MILCON

NAVFAC & AFCEC SPEAKERS PLANNED ON BARRACKS PROGRAM

Honors Gallery

Post Members Receive Awards at 2026 JETC

Congratulations to Post members **Rene Cortez**, **Don Gleason** and **Tae Parrish** who were inducted in the **Academy of Fellows** and **Don Gleason** who also received the **Leader Development Award** at JETC.



SAME Fellow Rene Cortez



SAME Fellow Don Gleason



SAME Fellow Tae Parrish



**Fellow Don Gleason's
Leader Development Award**

2026 Post Board Members

POSITION/NAME (E = Elected; A = Appointed)	PHONE	COMPANY
<i>President (E)</i> <u>Sarah Fowlkes</u>	(512) 423-9089	Jacobs
<i>Vice President (E)</i> <u>Cathy Bond-Cassidy</u>	(210) 683-0392	Koman Holdings
<i>Treasurer (E)</i> <u>Sam Hutchins</u> , F.SAME		Retired
<i>Secretary (E)</i> <u>Bridget Booth</u>		Clark Construction Group
<i>Director, Partnerships, 2026-27 (E)</i> <u>Steve Holt</u> , F.SAME	(210) 391-0921	MOCA Systems
<i>Director, Programs, 2026 (E)</i> <u>John Enyeart</u> , F.SAME	(210) 552-8368	AFIMSC
<i>Director, Member Development, 2026-27 (E)</i> <u>James Kisiel</u>	(713) 823-7068	Olsson
<i>Director, STEM & College Outreach, 2026 (E)</i> <u>Harold Eberbach</u>	(210) 995-0535	KMEA
<i>Immediate Past President</i> <u>John Baker</u>	(210) 872-1705	Lockward, Andrews & Newnam, Inc.
<i>Assistant Secretary (A)</i> <u>Danielle Genzer</u>	(210) 446-4348	Merrick
<i>Assistant Treasurer (A)</i> <u>Dick Kochanek</u> , F.SAME	(210) 884-9731	Retired
<i>Director, Young Professionals (A)</i> <u>Andrew Silvas</u>	(210) 643-0544	Broadbent & Associates
<i>Director, Fellows (A)</i> <u>David Pratt</u> , F.SAME	(210) 248-0909	WSP

Post Board Organization Chart

2026 Post Board Members

POSITION/NAME (E = Elected; A = Appointed)	PHONE	COMPANY
<i>Director, Individual Members (A)</i> <u>Ed von Dran</u>	(210) 326-6991	.Alpha Terra Engineering, Inc.
<i>Director, Sustaining Members (A)</i> <u>Michele Torres</u>	(703) 593-4407	Health Facility Solutions Company
<i>Military Enlisted Affairs Liaison (A)</i>		
<i>Director, Scholarships (A)</i> <u>Bonnie Hopke</u> , F.SAME		Retired
<i>K-12/STEM Outreach Coordinator (A)</i>		
<i>SAME E&C Camp Coordinator (A)</i> <u>Capt. Varsha Savalia</u>	(520) 313-1482	USPHS
<i>College Outreach Coordinator (A)</i> <u>Terry Watkins</u>	(210)403-6329	Jacobs
<i>Univ of Texas Student Chapter Mentor (A)</i> <u>Richard Mahn</u>	(512) 617-3103	Freese and Nichols
<i>Texas A&M Student Chapter Mentor (A)</i> <u>John Baker</u>	(210) 872-1705	Lockward, Andrews & Newnam, Inc.
<i>UT San Antonio Student Chapter Mentor (A)</i> <u>Terry Watkins</u>	(210) 403-6329	Retired
<i>Small Business Coordinator (A)</i> <u>Chris Scott</u>	(210) 816-4793	Health Facility Solutions Company
<i>Servicemember & Vet Support Coordinator (A)</i> <u>Mike Monreal</u> , F.SAME	(210) 845-5515	Broadus & Associates

Post Board Organization Chart

2026 Post Board Members

POSITION/NAME (E = Elected; A = Appointed)	PHONE	EMAIL
<i>Servicemember & Vet Transition Coordinator (A)</i> <u>Markus Henneke</u>	(703) 853-0219	IMEG Corp.
<i>Leadership Lab Co-Director (A)</i> <u>Shelby Gund</u>	(661) 619-6744	AFCEC
<i>Leadership Lab Co-Director (A)</i> <u>Braden Deines</u>	(210) 202-0430	Health Facility Solutions Company
<i>Website Manager/Newsletter Editor (A)</i> <u>Dick Kochanek</u> , F.SAME	(210) 884-9731	Retired
<i>Social Media Coordinator (A)</i>		
<i>Awards Committee Chair (A)</i> <u>Dick Kochanek</u> , F.SAME	(210) 884-9731	Retired
<i>Golf Chair (A)</i> <u>Michael Beach</u>	(830) 816-5434	Broadbent and Associates.
<i>Holiday Celebration Chair (A)</i> <u>Kelsey Edwards</u>	(817) 648-9470	Bhate



Post Board Organization Chart

Post Sustaining Members

as of June 1 Rosters

Company/Agency	Website
#	
3KEYS SERVICES GROUP LLC	http://www.3ksq.com/
A	
Aerostar Environmental and Construction	http://www.bbch-llc.com
AG3 Group, LLC	https://ag3-group.com/
Alpha Facilities Solutions, LLC	https://alphafacilities.com/
Alpha Terra Engineering, Inc.	http://atei97.com
American Structurepoint / Inc.	www.structurepoint.com
Aptim Federal Services, LLC	https://www.aptim.com
AR6 Construction & Engineering, LLC	https://ar6ce.com/
Austin Bridge & Road / LP	https://www.austin-ind.com/
B	
Baer Engineering and Environmental Consulting Inc.	http://baereng.com
Bain Medina Bain, Inc.	https://bmbi.com/
BB&E Consulting Engineers Professionals	https://bbande.com/
Benham Design LLC	http://www.benham.com
Bhate	https://www.bhate.com
Black & Veatch Special Projects Corp.	https://www.bv.com
Blast Resource Group / LLC	www.blastresourcegroup.com
Bristol Industries	http://www.bristol-companies.com/services/engineering
Burns & McDonnell	http://www.burnsmcd.com
C	
CAPE	http://www.cape-inc.com
CCI Prime Contractors, LLC	https://www.cci-alliance.com/home/
CDM Smith	https://www.cdmsmith.com/
Chenega Corporation	https://www.chenega.com/
CRUX Solutions	www.cruzsolutions.com
Cushing Terrell (CTA Inc.)	www.cushingterrell.com

Post Sustaining Members

as of June 1 Rosters

D	
DAWSON	www.dawsonohana.com
Design Build Consortium, LLC	https://www.manta.com/c/mb4ypf0/design-build-consortium-llc
E	
Eaton Corporation	https://www.eaton.com/us/en-us.html
ECC	https://www.ecc.net/
EEA Consulting Engineers	https://eeace.com/
F	
FLUOR	https://www.fluor.com/
Flux Resources	https://www.workwithflux.com/
FPM Remediations	https://www.fpm-remediations.com
G	
Garver	https://www.garverusa.com/
GFT / Inc	https://www.gftinc.com
H	
Hasen Global LLC	http://hasenglobal.com
Health Facility Solutions Company	https://hfscompany.com/
HGL	www.hgl.com
Huitt-Zollars Inc	https://www.huitt-zollars.com/
I	
IMEG Consultants Corp	https://www.imegcorp.com
International Consulting Engineers	https://www.icengineers.net
J	
Jacobs	https://www.jacobs.com
K	
Kleinfelder	https://www.kleinfelder.com
KMEA	https://www.kmea.net/
KOMAN Holdings / LLC	www.komanholdings.com

Post Sustaining Members

as of June 1 Rosters

L	
Los Alamos Tech Assoc, Inc. (LATA)	https://www.lata.com/
M	
M2 Federal, Inc.	https://www.m2federal.com
Mason & Hanger	www.masonandhanger.com
Matrix Design Group	https://www.matrixdesigngroup.com
Merrick & Company	https://www.merrick.com/
Michael Baker International	https://www.mbakintl.com
MOCA Systems / Inc.	www.moca-pm.com
N	
North Wind Group	https://northwindgrp.com/
O	
OEC Process (Onion Equipment Co.)	https://www.oecprocess.com/
Olsson	https://www.olsson.com
Oneida ESC Group	https://oescgroup.com/
P	
P. Max Engineering	https://www.pmax-eng.com
Parsons	www.parsons.com
Phoenix General Contractors LLC	https://www.phoenix-gc.com/
PIKA International	http://www.pikainc.com/
Pond & Company	https://www.pondco.com
Protection Engineering Consultants	www.protection-consultants.com
Q	
QRI/Quaternary Resource Investigations	www.QRI.com
R	
RS&H	www.rsandh.com
RSP Architects, Ltd	https://www.rsparch.com

Post Sustaining Members

as of June 1 Rosters

S	
SCIDEV, Ltd.	https://scidevltd.com/
SES Energy Services LLC	www.bbch-llc.com
Stanley Consultants Inc.	www.stanleyconsultants.com
Stantec, Inc.	https://www.stantec.com
Steelcase, Inc.	https://www.steelcase.com
Street Legal Industries, Inc.	http://www.slind.net
STV	www.stvinc.com
Surveying and Mapping/ LLC	www.sam.biz
SYNLawn	https://strictlygreengrass.com
T	
TB Industrial LLC	www.tb-industrial.com
Tepa Companies.	https://www.tepa.com/
Terracon Consultants, Inc.	https://www.terracon.com
Tetra Tech, Inc.	https://www.tetrattech.com/
Tiger brain Engineering, Inc.	https://tigerbrain.com/
Torres-Moore LLC	none listed
V	
V2X	https://gov2x.com/
Versar Global Solutions	https://www.versar.com
W	
Walter P. Moore	www.walterpmoore.com
Weston Solutions, Inc.	http://www.westonsolutions.com
Woolpert, Inc.	https://woolpert.com/
Wright Construction Group / LLC	https://www.wrightconstructiongrp.com

